

**Interim Superintendent's Recommendations
For Tri-cluster Roundtable Discussion Group**
Gaithersburg, Col. Zadok Magruder, and Thomas S. Wootton Clusters

March 11, 2016

Executive Summary

The Tri-cluster Roundtable Discussion Group focused on ways to address projected overutilization at four Gaithersburg Cluster elementary schools—Gaithersburg, Rosemont, Strawberry Knoll, and Summit Hall. The scope of the Roundtable enabled consideration of facility needs across cluster boundaries. In addition, the scope enabled near-term and long-term facility needs to be considered in a regional context. In developing my recommendations I have benefitted from the *Report of the Tri-cluster Roundtable Discussion Group* and also have considered near-term and long-term enrollment pressures. My recommendations are similar to Roundtable Approach #7 that was supported by most Roundtable members. The following are my recommendations:

- Gaithersburg Elementary School
Construct an addition to Gaithersburg Elementary School and provide two schools (a Grades Pre-K–2 school and a Grades 3–5 school) in one building with physical separations to the extent possible. This will achieve more manageable enrollment sizes in each half of the facility and maintain the school's service area where nearly all students walk to the school.
- Rosemont Elementary School
Monitor enrollment at the school and the pace of residential construction in the portion of the school's service area west of Interstate 270. Future enrollment trends may require an addition and/or boundary changes to be considered. If boundary changes are needed, then possible reassignments within the Gaithersburg Cluster and/or to the Thomas S. Wootton Cluster should be considered.
- Strawberry Knoll Elementary School
Due to the limited degree of overutilization and funding limitations, an addition cannot be recommended at this time. Monitor enrollment at the school to determine if an addition should be constructed in the future.
- Summit Hall Elementary School
Due to the plan to revitalize/expand Summit Hall Elementary School in the near future, a permanent addition prior to full revitalization/expansion is not recommended. I am recommending staff in the Department of Facilities Management explores the replacement of six older relocatable classrooms with newer relocatable classrooms or modular classrooms. In addition, staff will consider the possibility of a partially enclosed connection to the existing building. A decision on how to proceed will be made in fall 2016 for implementation in fall 2017.

- Shady Grove Sector Plan

To address long-range enrollment concerns, I recommend a boundary study be conducted in spring 2017 to reassign the portion of the Shady Grove Sector Plan that is within the Gaithersburg Cluster to Col. Zadok Magruder Cluster schools.

Background

On November 16, 2015, the Board of Education authorized a Tri-cluster Roundtable Discussion Group (Roundtable) process. The charge of the Roundtable was the development of general approaches to relieve Gaithersburg Cluster elementary schools of overutilization and the evaluation of these approaches using criteria established by the Roundtable.

The Board of Education included the Col. Zadok Magruder and Thomas S. Wootton clusters in the Roundtable because they are adjacent to the Gaithersburg Cluster and have available capacity at various school levels, as well as a number of elementary schools that are below the desired minimum enrollment size of 450 students.

Appendix A presents a map of the Tri-cluster area. Appendix B presents projected enrollment for schools in the Gaithersburg, Col. Zadok Magruder, and Thomas S. Wootton clusters. Appendix C presents the approaches reviewed by the Roundtable.

Review of the Issues and Interim Superintendent's Recommendations

My recommendations primarily address immediate and near-term enrollment concerns that fit within the six-year time frame of the Capital Improvements Program. However, in developing my recommendations, I have taken a long-term view and considered enrollment pressures we are likely to see over the next 20 years in this part of the county.

The tri-cluster area includes two large master planned communities that are just beginning to be built—the Shady Grove Sector Plan with 6,000 housing units planned and the Great Seneca Science Corridor Master Plan with 5,700 housing units planned. These plans overlap all three clusters engaged in the Roundtable. Over the next 20 or more years, it is likely that new elementary schools, a new middle school, and a new high school will be needed as enrollment grows. The school system is fortunate to have a number of future school sites in the area, including an elementary school site in the Great Seneca Science Corridor (GSSC) Master Plan, an elementary school site in the Shady Grove Sector Plan, a middle school site in the King Farm community, and a high school site in the Crown community.

The following is a summary of the input from Roundtable members on ways to address enrollment at the four Gaithersburg Cluster elementary schools that were the focus of the Roundtable. After this review of the input, my recommendations are presented along with the rationale for my recommendations.

Gaithersburg Elementary School – Roundtable Input

Gaithersburg Elementary School enrolls 864 students this year and enrollment is projected to exceed 950 students by the 2021–2022 school year. The current capacity of the school is 771 students. Nearly 90 percent of the 864 students reside within walking distance of the school.

The school provides a number of supports to students and families, including its School-based Health Center, Linkages to Learning, and Parent Resource Center.

During the Roundtable, a strong sentiment was expressed that the current school service area be maintained so that no students are reassigned out of the school. In addition to the educational supports at the school—including Title I and class-size reductions in Grades K–2—the social and health resources are very important to the parents and students. Roundtable representatives from all three clusters supported construction of an addition at Gaithersburg Elementary School and maintenance of the service area. In order to accommodate projected enrollment, an addition that would take the school’s capacity up to 1,000 students would be needed.

Gaithersburg Elementary School—Interim Superintendent’s Recommendation

I am very sympathetic to the concerns of parents of Gaithersburg Elementary School students. Maintaining walking access for students to schools is a standard practice of Montgomery County Public Schools (MCPS) whenever possible. This not only ensures a sense of community around the school, but also reduces transportation costs, and perhaps most importantly in the case of Gaithersburg Elementary School, enables a range of student supports to be provided close to home.

The concern about a large addition at Gaithersburg Elementary School has to do with management of a very large elementary school. However, a preliminary review by staff in the Department of Facilities Management revealed that two schools at the same location may be possible. My recommendation is to create two schools by dedicating one half of the building to accommodate Grades Pre-K–2 students and the other half to accommodate Grades 3–5 students. Each school would enroll approximately 500 students.

Unlike most other MCPS elementary schools, Gaithersburg Elementary School is adjacent to a middle school site where Gaithersburg Middle School is located. The combined acreage of the two school sites is 32 acres. This amount of land presents a unique opportunity to build an addition on Gaithersburg Elementary School and create the two schools without significantly reducing the size of the playfields of the two schools.

In order to expedite my recommendation, a feasibility study would be conducted beginning in July 2016, followed directly by planning and design of the “two schools in one building” concept. On this ambitious schedule, the two schools could begin operation in August 2020, contingent upon approval of the *Board of Education’s Requested FY 2017 Capital Budget and FY 2017–2022 Capital Improvements Program*, which includes \$26 million in funds for a Gaithersburg Cluster elementary school capacity solution.

The feasibility study would include provision of necessary core spaces, including a second administrative office, cafeteria, and other support spaces, along with additional classrooms to accommodate Grades 3–5 school programs. Staff in the Department of Facilities Management will develop educational specifications for each of the schools and identify all spaces necessary to support the two schools.

The feasibility study will develop a construction phasing plan that may require relocation of some students during construction. Options for accommodating students will be shared with the community and the Board of Education in fall 2016.

Rosemont Elementary School—Roundtable Input

Rosemont Elementary School enrolls 588 students this year and enrollment is projected to exceed 850 students by the 2021–2022 school year. The school has a capacity for 613 students. Projected enrollment increases are the result of new housing being built in the portion of the school’s service area west of Interstate 270. New housing developments include Crown and a few multifamily residential projects associated with the GSSC Master Plan. A small portion of the GSSC Master Plan is in the Rosemont Elementary School service area, while most of the residential units planned are in the Stone Mill Elementary School service area.

Most members of the Roundtable from the Thomas S. Wootton Cluster were concerned about the reassignment of the area west of Interstate 270 to Thomas S. Wootton Cluster schools. Although there is capacity available at some elementary schools in the Thomas S. Wootton Cluster, these schools are not adjacent to the Rosemont Elementary School service area. In addition, as the GSSC Master Plan builds out over the next 20 years, Thomas S. Wootton Cluster schools will be absorbing enrollment increases from the plan. During the Roundtable, the greatest concern was expressed over the impact of reassignments on Thomas S. Wootton High School, which is projected to enroll 2,237 students by the 2021–2022 school year. The school is scheduled for revitalization/expansion to a capacity for 2,420 students with an opening date of August 2021.

Rosemont Elementary School—Interim Superintendent’s Recommendation

I appreciate the concerns expressed by the Thomas S. Wootton Cluster about reassigning the area west of Interstate 270 to Thomas S. Wootton Cluster schools. In light of the projected enrollment of Thomas S. Wootton High School, I do not support reassignment of additional students into the cluster. I believe it is prudent to monitor enrollment at Rosemont Elementary School before any capital solutions or reassignments are considered. A great deal of the projected enrollment at Rosemont Elementary School is associated with new residential development. If this development slows down or does not generate the number of students currently anticipated, then projected space deficits at the school may be smaller than currently projected. In addition, reassignments from Rosemont Elementary School to other schools in the Gaithersburg Cluster may be possible in the future, given other elements of my recommendations that will result in additional capacity in the future. (See the Shady Grove Sector Plan recommendation below.)

In the next six years, enrollment at Thomas S. Wootton High School will be very close to the full capacity of its planned revitalization/expansion of 2,400 students. I do not believe it makes sense to address overutilization at one school—Rosemont Elementary School—by creating overutilization at another school—Thomas S. Wootton High School. I also believe we need to think long-term. If we add even more capacity to Thomas S. Wootton High School than the 2,400 planned capacity, then we delay what I consider to be the best long-term facility plan for this part of the county—the opening of a new high school. We are fortunate to have a future high school site in the Crown development. My recommendation avoids any action that would preclude, or delay, the opening of a new high school at some point beyond the six year Capital Improvements Program time frame.

Strawberry Knoll Elementary School—Roundtable Input

Strawberry Knoll Elementary School enrolls 621 students this year and enrollment is projected to stay near the same level for the next six years with 625 students projected for the 2021–2022

school year. The school has a capacity for 481 students. The Roundtable was in favor of constructing an addition at Strawberry Knoll Elementary School. Due to the location of Strawberry Knoll Elementary School, an addition is seen as only addressing the school's projected enrollment and not contributing to relief at other Gaithersburg Cluster elementary schools.

Strawberry Knoll Elementary School—Interim Superintendent's Recommendation

Although enrollment at Strawberry Knoll Elementary School has exceeded the school's capacity for several years, the degree of space deficit is limited, and the six relocatables at the school this year are expected to be sufficient for the foreseeable future. Due to budget limitations, I am unable to recommend an addition at this time. Therefore, I recommend enrollment be monitored and a classroom addition be considered in the future if warranted by the enrollment.

Summit Hall Elementary School—Roundtable Input

Summit Hall Elementary School enrolls 672 students this year and enrollment is projected to remain near the same level of enrollment for the next six years with 657 students projected for the 2021–2022 school year. The school has a capacity for 466 students. Enrollment has exceeded the capacity of the school for several years. Due to the scheduled revitalization/expansion of the school, there has been a reluctance to construct an addition prior to the revitalization/expansion project. The constructability of an addition prior to revitalization/expansion also is a concern due to site conditions. Roundtable members from the Gaithersburg Cluster expressed frustration with the repeated delays in the revitalization/expansion project and favored going ahead with an addition as soon as possible as the revitalization/expansion project could continue to be delayed. Currently the project is scheduled for completion in January 2023.

Summit Hall Elementary School—Interim Superintendent's Recommendation

I appreciate the concerns of Gaithersburg Cluster representatives on the Roundtable and the Summit Hall Elementary School community. The revitalization/expansion of the school has indeed been delayed several times. In addition, it cannot be guaranteed in the current funding climate that the project will remain on its January 2023 completion schedule.

I believe the quality of the revitalization/expansion of Summit Hall Elementary School needs to be optimized, and this cannot be accomplished by constructing a stand-alone addition prior to the revitalization/expansion project. Therefore, I do not recommend a stand-alone addition be built. However, I am cognizant of the issues the school faces with an aging facility and older relocatable classrooms. Therefore, I am recommending staff in the Department of Facilities Management explores the replacement of six older relocatable classrooms with either new units or modular classrooms that can be better sited at the school. In addition, staff will consider the possibility of a partially enclosed connection to the existing building. A decision on how to proceed will be made in fall 2016 for implementation in fall 2017.

Shady Grove Sector Plan—Roundtable Input

The Shady Grove Sector Plan straddles two school service areas—the Washington Grove Elementary School service area in the Gaithersburg Cluster and the Candlewood Elementary School service area in the Col. Zadok Magruder Cluster. Most of the 6,000 housing units in the plan are within the Washington Grove Elementary School service area. The Roundtable

explored reassigning the portion of the plan that is within the Gaithersburg Cluster to Col. Zadok Magruder Cluster schools where capacity is available at the elementary, middle and high school levels. However, Col. Zadok Magruder Cluster Roundtable representatives expressed concern about the impact of a reassignment to Candlewood Elementary School—that is the most adjacent school to the sector plan area. Less concern was expressed about secondary school reassignments because Shady Grove Middle School and Col. Zadok Magruder High School have a considerable amount of available capacity.

Shady Grove Sector Plan—Interim Superintendent’s Recommendation

The proximity of the Shady Grove Sector Plan to Col. Zadok Magruder Cluster schools, where there is available school capacity, makes a strong case for reassignment of the area. Sufficient capacity exists at Shady Grove Middle School and Col. Zadok Magruder High School to absorb full build-out of the sector plan. In regard to Candlewood Elementary School, the recent revitalization expanded the school’s capacity to 498 students and included a master planned addition that can take the school to a capacity for 740 students. Given that projected enrollment at the school remains at approximately 350 students, there is capacity at the school now and additional capacity can be created in the future.

Given the proximity of Col. Zadok Magruder Cluster secondary schools with excess capacity and given the ability to increase capacity at Candlewood Elementary School should reassignments be made to that school, I am recommending a spring 2017 boundary study be conducted to reassign the portion of the Shady Grove Sector Plan that is within the Gaithersburg Cluster service area to Col. Zadok Magruder Cluster schools. Reassignment of this planned housing will alleviate projected overutilization of Washington Grove Elementary School and potentially make capacity available that may help relieve overutilization at other Gaithersburg Cluster elementary schools. In addition, the reassignment provides for a long-range solution to enrollment pressures that will come in the next 20 years.

Summary

My recommendations are quite comparable to Approach #7 that most members of the Tri-cluster Roundtable Discussion Group supported. My recommendations provide the needed near-term solutions to space shortages while setting the stage for area schools to adapt to longer-term enrollment pressures.

APPENDICES

Appendix A	Map
Appendix B	Enrollment Projections
Appendix C	Roundtable Approaches

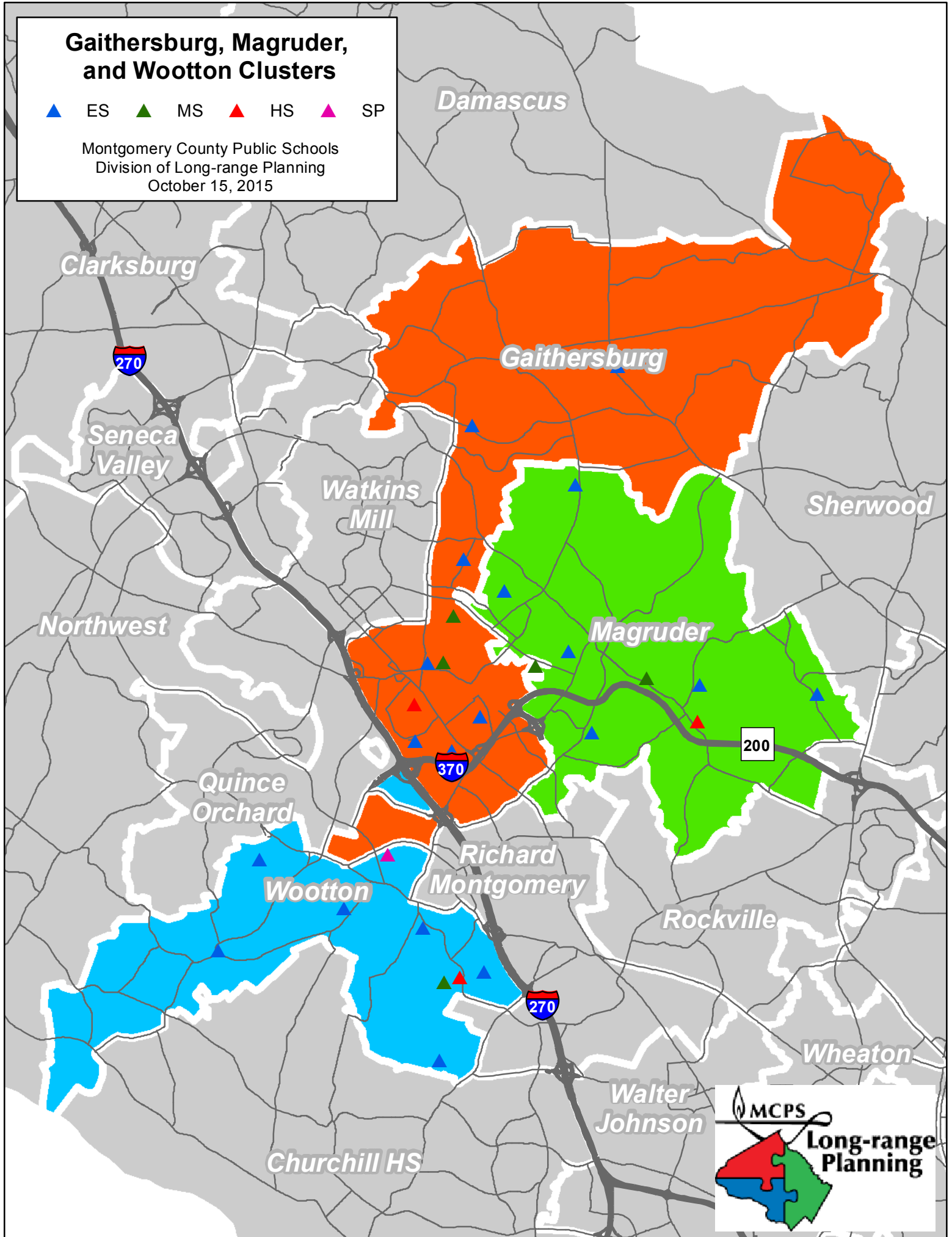
Appendix A

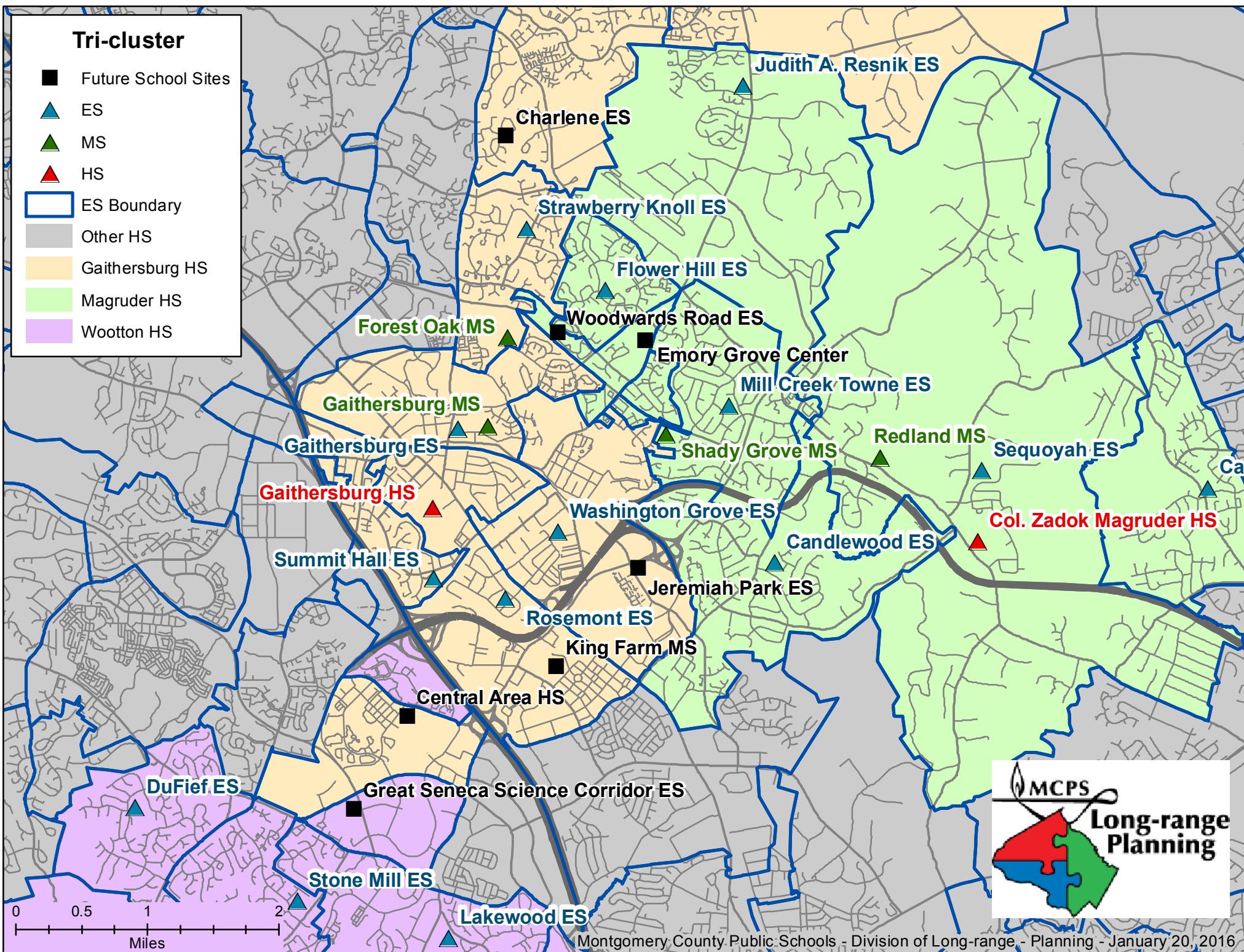
Tri-cluster Map

Gaithersburg, Magruder, and Wootton Clusters

▲ ES ▲ MS ▲ HS ▲ SP

Montgomery County Public Schools
Division of Long-range Planning
October 15, 2015





Appendix B

Enrollment Projections for Tri-cluster Schools

Gaithersburg Cluster Schools

School	Official Enrollment 2015-16	Projected Enrollment					
		2016-17	2017-18	2018-19	2019-20	2020-21	2021-22
<u>Gaithersburg High School</u>							
Capacity	2,407	2,407	2,407	2,407	2,407	2,407	2,407
Enrollment Projection	2,320	2,359	2,421	2,450	2,451	2,508	2,591
<i>Space Available/Deficit</i>	87	48	-14	-43	-44	-101	-184
<u>Forest Oak Middle School</u>							
Capacity	949	949	949	949	949	949	949
Enrollment Projection	805	799	831	869	947	1,003	1,041
<i>Space Available/Deficit</i>	144	150	118	80	2	-54	-92
<u>Gaithersburg Middle School</u>							
Capacity	949	949	949	949	949	949	949
Enrollment Projection	746	798	807	839	890	938	1,000
<i>Space Available/Deficit</i>	203	151	142	110	59	11	-51
<u>Gaithersburg Elementary School</u>							
Capacity	771	771	771	771	771	771	771
Enrollment Projection	867	936	968	993	1,005	991	970
<i>Space Available/Deficit</i>	-96	-165	-197	-222	-234	-220	-199
<u>Goshen Elementary School</u>							
Capacity	538	538	538	538	538	538	538
Enrollment Projection	581	544	552	546	533	517	528
<i>Space Available/Deficit</i>	-43	-6	-14	-8	5	21	10
<u>Laytonsville Elementary School</u>							
Capacity	448	448	448	448	448	448	448
Enrollment Projection	416	401	408	405	407	411	410
<i>Space Available/Deficit</i>	32	47	40	43	41	37	38
<u>Rosemont Elementary School</u>							
Capacity	613	613	613	613	613	613	613
Enrollment Projection	596	626	665	712	764	815	863
<i>Space Available/Deficit</i>	17	-13	-52	-99	-151	-202	-250
<u>Strawberry Knoll Elementary School</u>							
Capacity	481	481	481	481	481	481	481
Enrollment Projection	632	645	642	642	640	644	625
<i>Space Available/Deficit</i>	-151	-164	-161	-161	-159	-163	-144
<u>Summit Hall Elementary School*</u>							
Capacity	466	466	466	466	466	466	466
Enrollment Projection	671	682	686	694	676	675	657
<i>Space Available/Deficit</i>	-205	-216	-220	-228	-210	-209	-191
<u>Washington Grove Elementary School</u>							
Capacity	623	623	623	623	623	623	623
Enrollment Projection	452	465	497	525	553	591	632
<i>Space Available/Deficit</i>	171	158	126	98	70	32	-9

* Summit Hall ES revitalization/expansion scheduled for completion in January 2023. (Capacity to be determined.)

Col. Zadok Magruder Cluster Schools

School	Official Enrollment 2015-16	Projected Enrollment					
		2016-17	2017-18	2018-19	2019-20	2020-21	2021-22
<u>Col. Zadok Magruder High School</u>							
Capacity	1,955	1,941	1,941	1,941	1,941	1,941	1,941
Enrollment Projection	1,520	1,538	1,670	1,560	1,592	1,577	1,622
<i>Space Available/Deficit</i>	435	403	271	381	349	364	319
<u>Redland Middle School</u>							
Capacity	757	757	757	757	757	757	757
Enrollment Projection	549	540	539	593	638	633	628
<i>Space Available/Deficit</i>	208	217	218	164	119	124	129
<u>Shady Grove Middle School</u>							
Capacity	859	859	859	859	859	859	859
Enrollment Projection	568	574	572	575	544	556	552
<i>Space Available/Deficit</i>	291	285	287	284	315	303	307
<u>Candlewood Elementary School</u>							
Capacity	532	515	498	498	498	498	498
Enrollment Projection	359	352	357	349	352	353	351
<i>Space Available/Deficit</i>	173	163	141	149	146	145	147
<u>Cashell Elementary School</u>							
Capacity	340	340	340	340	340	340	340
Enrollment Projection	372	365	379	375	363	364	358
<i>Space Available/Deficit</i>	-32	-25	-39	-35	-23	-24	-18
<u>Flower Hill Elementary School</u>							
Capacity	483	483	483	483	483	483	483
Enrollment Projection	499	459	465	461	462	456	450
<i>Space Available/Deficit</i>	-16	24	18	22	21	27	33
<u>Mill Creek Towne Elementary School</u>							
Capacity	336	336	336	336	336	336	336
Enrollment Projection	379	373	373	367	365	358	359
<i>Space Available/Deficit</i>	-43	-37	-37	-31	-29	-22	-23
<u>Judith A. Resnik Elementary School*</u>							
Capacity	493	493	493	493	493	701	701
Enrollment Projection	642	645	642	642	640	644	627
<i>Space Available/Deficit</i>	-149	-152	-149	-149	-147	57	74
<i>Addition opens August 2020</i>							
<u>Sequoyah Elementary School</u>							
Capacity	485	485	485	485	485	485	485
Enrollment Projection	385	398	416	421	432	443	464
<i>Space Available/Deficit</i>	100	87	69	64	53	42	21

* Capacity of Resnik ES increases to 701 with completion of addition Aug. 2020.

Thomas S. Wootton Cluster Schools

School	Official Enrollment 2015-16	Projected Enrollment					
		2016-17	2017-18	2018-19	2019-20	2020-21	2021-22
<u>Thomas S. Wootton High School*</u>							
Capacity	2,167	2,167	2,167	2,167	2,167	2,167	2,420
Enrollment Projection	2,212	2,248	2,243	2,255	2,232	2,209	2,237
<i>Space Available/Deficit</i>	-45	-81	-76	-88	-65	-42	183
<u>Cabin John Middle School</u>							
Capacity	1,113	1,113	1,113	1,113	1,113	1,113	1,113
Enrollment Projection	941	952	1,000	1,004	1,015	978	948
<i>Space Available/Deficit</i>	172	161	113	109	98	135	165
<u>Robert Frost Middle School</u>							
Capacity	1,084	1,084	1,084	1,084	1,084	1,084	1,084
Enrollment Projection	1,038	1,091	1,081	1,068	1,023	967	874
<i>Space Available/Deficit</i>	46	-7	3	16	61	117	210
<u>Cold Spring Elementary School**</u>							
Capacity	459	459	459	459	459	459	504
Enrollment Projection	334	320	314	319	317	320	325
<i>Space Available/Deficit</i>	125	139	145	140	142	139	179
<u>DuFief Elementary School***</u>							
Capacity	416	416	416	416	416	416	740
Enrollment Projection	313	308	301	304	305	316	330
<i>Space Available/Deficit</i>	103	108	115	112	111	100	410
<u>Fallsmead Elementary School</u>							
Capacity	598	598	598	598	598	598	598
Enrollment Projection	541	522	516	493	488	490	489
<i>Space Available/Deficit</i>	57	76	82	105	110	108	109
<u>Lakewood Elementary School</u>							
Capacity	556	556	556	556	556	556	556
Enrollment Projection	543	518	491	464	452	449	459
<i>Space Available/Deficit</i>	13	38	65	92	104	107	97
<u>Stone Mill Elementary School</u>							
Capacity	654	654	654	654	654	654	654
Enrollment Projection	650	629	610	591	581	585	589
<i>Space Available/Deficit</i>	4	25	44	63	73	69	65
<u>Travilah Elementary School</u>							
Capacity	522	522	522	522	522	522	522
Enrollment Projection	390	375	377	357	351	352	359
<i>Space Available/Deficit</i>	132	147	145	165	171	170	163

* Capacity of Wootton HS increases to 2,420 with completion of revitalization/expansion in Aug. 2021.

** Capacity of Cold Spring ES increases to 504 with completion of revitalization/expansion in Aug. 2021.

*** Capacity of DuFief ES increases to 740 with completion of revitalization/expansion in Aug. 2021.

Additional capacity at DuFief ES will be used to relieve Rachel Carson ES through future boundary changes.

Appendix C

Tri-cluster Approaches

Tri-cluster Roundtable Discussion Group:

Approaches to Address Space Deficits at Gaithersburg Cluster Elementary Schools

February 10, 2016

Approach #1— Classroom Additions

- Build additions at schools with enrollments above capacity, including Gaithersburg, Rosemont, Strawberry Knoll, and Summit Hall elementary schools and maintain the current service areas.
- August 2020 is the earliest that additions could be completed.

Approach #2—New Elementary School

- Build a new elementary school and redraw the boundaries of Gaithersburg Cluster elementary schools to relieve schools with enrollments above school capacities and to establish the service area of the new school.
- August 2020 is the earliest that a new school could be opened.
- A site selection process would need to be conducted during the 2016–2017 school year to identify the location for the new school.
- A community boundary study process would need to be conducted prior to the opening of the new school. The study would be conducted in spring 2019 with Board action in November 2019.

Approach #3—Reopen Emory Grove Elementary School

- Reopen the former Emory Grove Elementary School and redraw the boundaries of Gaithersburg Cluster elementary schools to relieve schools with enrollments above school capacities and to establish the service area for Emory Grove Elementary School.
- Emory Grove is located at 18100 Washington Grove Lane, Gaithersburg, Maryland, and is within the Judith A. Resnik Elementary School service area.
- August 2020 is the earliest the school could be reopened. An addition would need to be built to increase the capacity of the school to 740, and other facility improvements would be required.

- A community boundary study process would need to be conducted prior to the reopening of Emory Grove Elementary School. The study would be conducted in spring 2019 with Board action in November 2019.
- The Emory Grove facility is currently a holding center for elementary schools undergoing revitalization/expansion. Brown Station Elementary School is currently housed at the Emory Grove Center through June 2017.
- The Emory Grove Center is vacant from August 2017 through December 2019.
- The next school scheduled to be in the Emory Grove Center is DuFief Elementary School, beginning in January 2020, followed by Damascus Elementary School beginning in August 2021.
- An alternative elementary school holding center would need to be identified for schools scheduled to be housed at the Emory Grove Center during their revitalization/expansion in the future.

Approach #3a—Utilize Emory Grove Center for the Short-term

- Utilize the Emory Grove Center on a temporary basis until one of the long-term approaches can be implemented. The Emory Grove Center could be used to temporarily serve a grade level from one or more of the Gaithersburg Cluster elementary schools that currently have enrollments above their capacities. August 2017 is the earliest that the Emory Grove Center could be used on a temporary basis.

Approach #4—Grade Reorganization

- Reorganize the grade levels served by elementary schools with enrollments above capacity, including Gaithersburg, Rosemont, Strawberry Knoll, and Summit Hall elementary schools from Grades Pre-K-5 to Grades Pre-K-4.
- Move Grade 5 students to the middle school that students are assigned to; Gaithersburg and Strawberry Knoll elementary schools Grade 5 students would be assigned to Gaithersburg Middle School, and Rosemont and Summit Hall elementary schools Grade 5 students would be assigned to Forest Oak Middle School.
- Both middle schools are projected to exceed their capacities by the 2021–2022 school year. Therefore, an addition at one or both of these middle schools would be required to house the Grade 5 students on a permanent basis. In the interim, relocatable classrooms could be provided to implement this approach.

Approach #4a—Grade Reorganization for the Short-term

- Utilize the Gaithersburg Cluster middle schools for Grade 5 students on an interim basis until one of the long-term approaches can be implemented.

Approach #5—Reassign the Shady Grove Sector Plan to the Col. Zadok Magruder Cluster

- Reassign the portion of the Shady Grove Sector Plan that is within the Washington Grove Elementary School service area to Col. Zadok Magruder Cluster schools.
- A community boundary study process would be conducted to consider the Col. Zadok Magruder Cluster schools that would receive the Shady Grove Sector Plan. This process could be conducted in spring 2017 with Board action in November 2017. Reassignments could then occur beginning with the 2018–2019 school year.
- The reassignment of the Shady Grove Sector Plan area would create capacity at Washington Grove Elementary School that could be utilized to relieve Gaithersburg Elementary School that has an adjacent service area.
- To address the Strawberry Knoll Elementary School space deficit, an addition could be built. The earliest it could be completed is August 2020.
- To address the Summit Hall Elementary School space deficit an addition could be built prior to the revitalization/expansion project, or the school could be expanded during the revitalization/expansion project. The earliest an addition could be completed is August 2020. The revitalization/expansion is scheduled for completion in January 2023.
- In the long-term the reassignment listed above may require additions to Col. Zadok Magruder cluster schools, as master planned housing is built over the next 20 to 30 years.
- The Shady Grove Sector Plan includes a future elementary school site.

Approach #6—Reassign the Area West of Interstate 270 to the Wootton Cluster

- Reassign the area west of Interstate 270 that is within the Rosemont Elementary School service area to Thomas S. Wootton Cluster schools. This area includes the Crown and Decoverly housing developments and housing developments associated with the Great Seneca Science Corridor (GSSC) Master Plan.
- The portions of the GSSC Master Plan that would be reassigned are the “Belward” area—where the amount of housing is constrained to staff and visitors to the future John Hopkins University facilities—and the “Life Sciences North” area that is north of Key West Highway. Remaining areas of the GSSC Master Plan—that contain most of the future housing—are already within the Thomas S. Wootton Cluster.
- A community boundary study process would be conducted to consider the Thomas S. Wootton cluster schools that would receive the areas listed above. This process could be conducted in spring 2017 with Board action in November 2017. Reassignments could then occur beginning with the 2018–2019 school year.

- The reassignment of the portion of the Rosemont Elementary School service area west of Interstate 270 would substantially reduce the projected space shortage at the school.
- To address the Gaithersburg Elementary School space deficit an addition could be built. The earliest it could be completed is August 2020.
- To address the Strawberry Knoll Elementary School space deficit an addition could be built. The earliest it could be completed is August 2020.
- To address the Summit Hall Elementary School space deficit an addition could be built prior to the revitalization/expansion project, or the school could be expanded during the revitalization/expansion project. The earliest an addition could be completed is August 2020. The revitalization/expansion is scheduled for completion in January 2023.
- In the long-term the reassignments listed above may require additions to Thomas S. Wootton Cluster schools, as master planned housing is built over the next 20 to 30 years.
- The GSSC Master Plan includes a future elementary school site.

Approach #7: Additions, Revitalization/Expansion and Reassignments

- Build additions at Gaithersburg and Strawberry Knoll elementary schools. The earliest additions could be completed is August 2020.
- Revitalize and expand Summit Hall Elementary School on the current schedule with completion in January 2023.
- Reassign the portion of the Shady Grove Sector Plan that is within the Washington Grove Elementary School service area to Col. Zadok Magruder Cluster schools.
- Plan for boundary changes to reduce the service area of Rosemont Elementary School. Consider reassignments to schools with space available in the Gaithersburg and Thomas S. Wootton clusters.

Approach # 1

Classroom Additions at Four Gaithersburg Cluster Schools

No changes to Magruder and Wootton Cluster Schools

Gaithersburg Cluster Schools

Gaithersburg ES (+10 rooms), Rosemont ES (+10 rooms),
Strawberry Knoll (+8 rooms), Summit Hall ES (+8 rooms.) Earliest additions can open is August 2020.

School	Official Enrollment 2015-16	Projected Enrollment					
		2016-17	2017-18	2018-19	2019-20	2020-21	2021-22
<u>Gaithersburg Elementary School</u>							
Capacity	771	771	771	771	771	1,001	1,001
Enrollment Projection	867	936	968	993	1,005	991	970
<i>Space Available/Deficit</i>	-96	-165	-197	-222	-234	10	31
<u>Goshen Elementary School</u>							
Capacity	538	538	538	538	538	538	538
Enrollment Projection	581	544	552	546	533	517	528
<i>Space Available/Deficit</i>	-43	-6	-14	-8	5	21	10
<u>Laytonsville Elementary School</u>							
Capacity	448	448	448	448	448	448	448
Enrollment Projection	416	401	408	405	407	411	410
<i>Space Available/Deficit</i>	32	47	40	43	41	37	38
<u>Rosemont Elementary School</u>							
Capacity	613	613	613	613	613	843	843
Enrollment Projection	596	626	665	712	764	815	863
<i>Space Available/Deficit</i>	17	-13	-52	-99	-151	28	-20
<u>Strawberry Knoll Elementary School</u>							
Capacity	481	481	481	481	481	665	665
Enrollment Projection	632	645	642	642	640	644	625
<i>Space Available/Deficit</i>	-151	-164	-161	-161	-159	21	40
<u>Summit Hall Elementary School</u>							
Capacity	466	466	466	466	466	650	650
Enrollment Projection	671	682	686	694	676	675	657
<i>Space Available/Deficit</i>	-205	-216	-220	-228	-210	-25	-7
<u>Washington Grove Elementary School</u>							
Capacity	623	623	623	623	623	623	623
Enrollment Projection	452	465	497	525	553	591	632
<i>Space Available/Deficit</i>	171	158	126	98	70	32	-9

Summit Hall ES revitalization/expansion scheduled for completion in January 2023.

Approach # 2

Open a New Elementary School

No changes to Magruder and Wootton Cluster Schools

Gaithersburg Cluster Schools

Earliest a new school could open is August 2020.

School	Official Enrollment 2015-16	Projected Enrollment					
		2016-17	2017-18	2018-19	2019-20	2020-21	2021-22
<u>Gaithersburg Elementary School</u>							
Capacity	771	771	771	771	771	771	771
Enrollment Projection	867	936	968	993	1,005	991	970
<i>Space Available/Deficit</i>	-96	-165	-197	-222	-234	-220	-199
<u>Goshen Elementary School</u>							
Capacity	538	538	538	538	538	538	538
Enrollment Projection	581	544	552	546	533	517	528
<i>Space Available/Deficit</i>	-43	-6	-14	-8	5	21	10
<u>Laytonsville Elementary School</u>							
Capacity	448	448	448	448	448	448	448
Enrollment Projection	416	401	408	405	407	411	410
<i>Space Available/Deficit</i>	32	47	40	43	41	37	38
<u>Rosemont Elementary School</u>							
Capacity	613	613	613	613	613	613	613
Enrollment Projection	596	626	665	712	764	815	863
<i>Space Available/Deficit</i>	17	-13	-52	-99	-151	-202	-250
<u>Strawberry Knoll Elementary School</u>							
Capacity	481	481	481	481	481	481	481
Enrollment Projection	632	645	642	642	640	644	625
<i>Space Available/Deficit</i>	-151	-164	-161	-161	-159	-163	-144
<u>Summit Hall Elementary School</u>							
Capacity	466	466	466	466	466	466	466
Enrollment Projection	671	682	686	694	676	675	657
<i>Space Available/Deficit</i>	-205	-216	-220	-228	-210	-209	-191
<u>Washington Grove Elementary School</u>							
Capacity	623	623	623	623	623	623	623
Enrollment Projection	452	465	497	525	553	591	632
<i>Space Available/Deficit</i>	171	158	126	98	70	32	-9
<u>New Elementary School</u>							
Capacity						740	740
<u>Cluster Elementaries + New School</u>							
Capacity	3,940	3,940	3,940	3,940	3,940	4,680	4,680
Enrollment Projection	4,215	4,299	4,418	4,517	4,578	4,644	4,685
<i>Space Available/Deficit</i>		-359	-478	-577	-638	36	-5

Summit Hall ES revitalization/expansion scheduled for completion in January 2023.

Approach # 3
Reopen Emory Grove Elementary School
 No changes to Magruder and Wootton Cluster Schools

Gaithersburg Cluster Schools

Earliest Emory Grove could reopen is August 2020.

School	Official Enrollment 2015-16	Projected Enrollment					
		2016-17	2017-18	2018-19	2019-20	2020-21	2021-22
<u>Gaithersburg Elementary School</u>							
Capacity	771	771	771	771	771	771	771
Enrollment Projection	867	936	968	993	1,005	991	970
Space Available/Deficit	-96	-165	-197	-222	-234	-220	-199
<u>Goshen Elementary School</u>							
Capacity	538	538	538	538	538	538	538
Enrollment Projection	581	544	552	546	533	517	528
Space Available/Deficit	-43	-6	-14	-8	5	21	10
<u>Laytonsville Elementary School</u>							
Capacity	448	448	448	448	448	448	448
Enrollment Projection	416	401	408	405	407	411	410
Space Available/Deficit	32	47	40	43	41	37	38
<u>Rosemont Elementary School</u>							
Capacity	613	613	613	613	613	613	613
Enrollment Projection	596	626	665	712	764	815	863
Space Available/Deficit	17	-13	-52	-99	-151	-202	-250
<u>Strawberry Knoll Elementary School</u>							
Capacity	481	481	481	481	481	481	481
Enrollment Projection	632	645	642	642	640	644	625
Space Available/Deficit	-151	-164	-161	-161	-159	-163	-144
<u>Summit Hall Elementary School</u>							
Capacity	466	466	466	466	466	466	466
Enrollment Projection	671	682	686	694	676	675	657
Space Available/Deficit	-205	-216	-220	-228	-210	-209	-191
<u>Washington Grove Elementary School</u>							
Capacity	623	623	623	623	623	623	623
Enrollment Projection	452	465	497	525	553	591	632
Space Available/Deficit	171	158	126	98	70	32	-9
<u>Emory Grove Elementary School</u>							
Capacity						740	740
<u>Cluster Elementaries + Emory Grove ES</u>							
Capacity	3,940	3,940	3,940	3,940	3,940	4,680	4,680
Enrollment Projection	4,215	4,299	4,418	4,517	4,578	4,644	4,685
Space Available/Deficit		-359	-478	-577	-638	36	-5

Summit Hall ES revitalization/expansion scheduled for completion in January 2023.

Approach # 3a
Utilize Emory Grove Center for Short-term
 No changes to Magruder and Wootton Cluster Schools

Gaithersburg Cluster Schools

Emory Grove Center is vacant from August 2017 to December 2019.

School	Official Enrollment 2015-16	Projected Enrollment					
		2016-17	2017-18	2018-19	2019-20	2020-21	2021-22
<u>Gaithersburg Elementary School</u>							
Capacity	771	771	771	771	771	771	771
Enrollment Projection *	867	936	968	993	1,005	991	970
<i>Space Available/Deficit</i>	-96	-165	-197	-222	-234	-220	-199
<u>Goshen Elementary School</u>							
Capacity	538	538	538	538	538	538	538
Enrollment Projection	581	544	552	546	533	517	528
<i>Space Available/Deficit</i>	-43	-6	-14	-8	5	21	10
<u>Laytonsville Elementary School</u>							
Capacity	448	448	448	448	448	448	448
Enrollment Projection	416	401	408	405	407	411	410
<i>Space Available/Deficit</i>	32	47	40	43	41	37	38
<u>Rosemont Elementary School</u>							
Capacity	613	613	613	613	613	613	613
Enrollment Projection	596	626	665	712	764	815	863
<i>Space Available/Deficit</i>	17	-13	-52	-99	-151	-202	-250
<u>Strawberry Knoll Elementary School</u>							
Capacity	481	481	481	481	481	481	481
Enrollment Projection	632	645	642	642	640	644	625
<i>Space Available/Deficit</i>	-151	-164	-161	-161	-159	-163	-144
<u>Summit Hall Elementary School</u>							
Capacity	466	466	466	466	466	466	466
Enrollment Projection *	671	682	686	694	676	675	657
<i>Space Available/Deficit</i>	-205	-216	-220	-228	-210	-209	-191
<u>Washington Grove Elementary School</u>							
Capacity	623	623	623	623	623	623	623
Enrollment Projection	452	465	497	525	553	591	632
<i>Space Available/Deficit</i>	171	158	126	98	70	32	-9
<u>Emory Grove Center**</u>							
Capacity			450	450	450		
<u>Cluster Elementaries + Emory Grove ES</u>							
Capacity	3,940	3,940	4,390	4,390	4,390	3,940	3,940
Enrollment Projection	4,215	4,299	4,418	4,517	4,578	4,644	4,685
<i>Space Available/Deficit</i>		-359	-28	-127	-188	-704	-745

*Gaithersburg and Summit Hall elementary schools need the most short-term relief.

**Capacity of Emory Grove Center does not include relocatable classrooms that are available at the Center.
 Summit Hall ES revitalization/expansion scheduled for completion in January 2023.

Approach # 4 Grade Reorganization

No changes to Magruder and Wootton Cluster Schools

Gaithersburg Cluster Schools

Reorganize Gaithersburg, Rosemont, Strawberry Knoll and Summit Hall elementary schools to Grades PreK-4 and assign Grade 5 students to middle school of assignment for the elementary school
Earliest that this could be implemented is August 2017.

School	Official Enrollment 2015-16	Projected Enrollment					
		2016-17	2017-18	2018-19	2019-20	2020-21	2021-22
<u>Forest Oak Middle School*</u>							
Capacity	949	949	949	949	949	949	949
Enrollment Projection	805	799	1,006	1,072	1,145	1,220	1,256
<i>Space Available/Deficit</i>	144	150	-57	-123	-196	-271	-307
<u>Gaithersburg Middle School**</u>							
Capacity	949	949	949	949	949	949	949
Enrollment Projection	746	798	1,020	1,070	1,140	1,216	1,260
<i>Space Available/Deficit</i>	203	151	-71	-121	-191	-267	-311
<u>Gaithersburg Elementary School</u>							
Capacity	771	771	771	771	771	771	771
Enrollment Projection	867	936	843	851	839	818	805
<i>Space Available/Deficit</i>	-96	-165	-72	-80	-68	-47	-34
<u>Goshen Elementary School</u>							
Capacity	538	538	538	538	538	538	538
Enrollment Projection	581	544	552	546	533	517	528
<i>Space Available/Deficit</i>	-43	-6	-14	-8	5	21	10
<u>Laytonsville Elementary School</u>							
Capacity	448	448	448	448	448	448	448
Enrollment Projection	416	401	408	405	407	411	410
<i>Space Available/Deficit</i>	32	47	40	43	41	37	38
<u>Rosemont Elementary School</u>							
Capacity	613	613	613	613	613	613	613
Enrollment Projection	596	626	581	622	667	712	753
<i>Space Available/Deficit</i>	17	-13	32	-9	-54	-99	-140
<u>Strawberry Knoll Elementary School</u>							
Capacity	481	481	481	481	481	481	481
Enrollment Projection	632	645	554	553	556	539	530
<i>Space Available/Deficit</i>	-151	-164	-73	-72	-75	-58	-49
<u>Summit Hall Elementary School*</u>							
Capacity	466	466	466	466	466	466	466
Enrollment Projection	671	682	595	581	575	561	552
<i>Space Available/Deficit</i>	-205	-216	-129	-115	-109	-95	-86
<u>Washington Grove Elementary School</u>							
Capacity	623	623	623	623	623	623	623
Enrollment Projection	452	465	497	525	553	591	632
<i>Space Available/Deficit</i>	171	158	126	98	70	32	-9

Grade 5 students from Rosemont ES and Summit Hall ES are reassigned to Forest Oak Middle School.

Grade 5 students from Gaithersburg ES and Strawberry Knoll ES are reassigned to Gaithersburg Middle School.

Summit Hall ES revitalization/expansion scheduled for completion in January 2023.

Approach # 4a
Grade Reorganization for the Short-term
 No changes to Magruder and Wootton Cluster Schools

Gaithersburg Cluster Schools

Reorganize Gaithersburg, Rosemont, Strawberry Knoll and Summit Hall elementary schools to Grades PreK-4 and assign Grade 5 students to middle school of assignment for the elementary school
 Earliest that this could be implemented is August 2017.

School	Official Enrollment 2015-16	Projected Enrollment					
		2016-17	2017-18	2018-19	2019-20	2020-21	2021-22
<u>Forest Oak Middle School*</u>							
Capacity	949	949	949	949	949	949	949
Enrollment Projection	805	799	1,006	1,072	1,145	1,003	1,041
<i>Space Available/Deficit</i>	144	150	-57	-123	-196	-54	-92
<u>Gaithersburg Middle School**</u>							
Capacity	949	949	949	949	949	949	949
Enrollment Projection	746	798	1,020	1,070	1,140	938	1,000
<i>Space Available/Deficit</i>	203	151	-71	-121	-191	11	-51
<u>Gaithersburg Elementary School</u>							
Capacity	771	771	771	771	771	771	771
Enrollment Projection	867	936	843	851	839	991	970
<i>Space Available/Deficit</i>	-96	-165	-72	-80	-68	-220	-199
<u>Goshen Elementary School</u>							
Capacity	538	538	538	538	538	538	538
Enrollment Projection	581	544	552	546	533	517	528
<i>Space Available/Deficit</i>	-43	-6	-14	-8	5	21	10
<u>Laytonsville Elementary School</u>							
Capacity	448	448	448	448	448	448	448
Enrollment Projection	416	401	408	405	407	411	410
<i>Space Available/Deficit</i>	32	47	40	43	41	37	38
<u>Rosemont Elementary School</u>							
Capacity	613	613	613	613	613	613	613
Enrollment Projection	596	626	581	622	667	815	863
<i>Space Available/Deficit</i>	17	-13	32	-9	-54	-202	-250
<u>Strawberry Knoll Elementary School</u>							
Capacity	481	481	481	481	481	481	481
Enrollment Projection	632	645	554	553	556	644	625
<i>Space Available/Deficit</i>	-151	-164	-73	-72	-75	-163	-144
<u>Summit Hall Elementary School*</u>							
Capacity	466	466	466	466	466	466	466
Enrollment Projection	671	682	595	581	575	675	657
<i>Space Available/Deficit</i>	-205	-216	-129	-115	-109	-209	-191
<u>Washington Grove Elementary School</u>							
Capacity	623	623	623	623	623	623	623
Enrollment Projection	452	465	497	525	553	591	632
<i>Space Available/Deficit</i>	171	158	126	98	70	32	-9

Grade 5 students from Rosemont ES and Summit Hall ES are reassigned to Forest Oak Middle School.
 Grade 5 students from Gaithersburg ES and Strawberry Knoll ES are reassigned to Gaithersburg Middle School.
 Summit Hall ES revitalization/expansion scheduled for completion in January 2023.

Approach # 5

Reassign Shady Grove Sector Plan, now in Washington Grove ES, to Col. Zadok Magruder Cluster

Gaithersburg Cluster Schools

Earliest that the approach could be implemented is August 2018.

School	Official Enrollment 2015-16	Projected Enrollment					
		2016-17	2017-18	2018-19	2019-20	2020-21	2021-22
<u>Gaithersburg Elementary School</u>							
Capacity	771	771	771	771	771	771	771
Enrollment Projection	867	936	968	993	1,005	991	970
<i>Space Available/Deficit</i>	-96	-165	-197	-222	-234	-220	-199
<u>Goshen Elementary School</u>							
Capacity	538	538	538	538	538	538	538
Enrollment Projection	581	544	552	546	533	517	528
<i>Space Available/Deficit</i>	-43	-6	-14	-8	5	21	10
<u>Laytonsville Elementary School</u>							
Capacity	448	448	448	448	448	448	448
Enrollment Projection	416	401	408	405	407	411	410
<i>Space Available/Deficit</i>	32	47	40	43	41	37	38
<u>Rosemont Elementary School</u>							
Capacity	613	613	613	613	613	613	613
Enrollment Projection *	596	626	665	712	764	815	863
<i>Space Available/Deficit</i>	17	-13	-52	-99	-151	-202	-250
<u>Strawberry Knoll Elementary School</u>							
Capacity	481	481	481	481	481	481	481
Enrollment Projection	632	645	642	642	640	644	625
<i>Space Available/Deficit</i>	-151	-164	-161	-161	-159	-163	-144
<u>Summit Hall Elementary School</u>							
Capacity	466	466	466	466	466	466	466
Enrollment Projection	671	682	686	694	676	675	657
<i>Space Available/Deficit</i>	-205	-216	-220	-228	-210	-209	-191
<u>Washington Grove Elementary School**</u>							
Capacity	623	623	623	623	623	623	623
Enrollment Projection **	452	465	497	493	495	502	508
<i>Space Available/Deficit</i>	171	158	126	130	128	121	115

Summit Hall ES revitalization/expansion scheduled for completion in January 2023.

Approach # 5

Reassign Shady Grove Sector Plan, now in Washington Grove ES, to Col. Zadok Magruder Cluster

Col. Zadok Magruder Cluster Schools

Earliest approach could be implemented is August 2018.

School	Official Enrollment 2015-16	Projected Enrollment					
		2016-17	2017-18	2018-19	2019-20	2020-21	2021-22
<u>Magruder Cluster Elementaries</u> <i>Before reassignment of I-370 east</i>							
Capacity	2,669	2,652	2,635	2,635	2,635	2,859	2,843
Enrollment Projection	2,636	2,592	2,632	2,615	2,614	2,618	2,609
<i>Space Available/Deficit</i>		60	3	20	21	241	234
<u>Magruder Cluster Elementaries</u> <i>After reassignment of I-370 east</i>							
Capacity	2,669	2,652	2,635	2,635	2,635	2,859	2,843
Enrollment Projection	2,636	2,592	2,632	2,647	2,672	2,707	2,733
<i>Space Available/Deficit</i>		60	3	-12	-37	152	110

* Cluster capacity includes addition to Resnik ES that increases capacity to 701 in Aug. 2020.

Approach # 6

Reassign Area West of I-270, now in Rosemont ES, to Thomas S. Wootton Cluster

Gaithersburg Cluster Schools

Earliest that the approach could be implemented is August 2018.

School	Official Enrollment 2015-16	Projected Enrollment					
		2016-17	2017-18	2018-19	2019-20	2020-21	2021-22
<u>Gaithersburg Elementary School</u>							
Capacity	771	771	771	771	771	771	771
Enrollment Projection	867	936	968	993	1,005	991	970
<i>Space Available/Deficit</i>	-96	-165	-197	-222	-234	-220	-199
<u>Goshen Elementary School</u>							
Capacity	538	538	538	538	538	538	538
Enrollment Projection	581	544	552	546	533	517	528
<i>Space Available/Deficit</i>	-43	-6	-14	-8	5	21	10
<u>Laytonsville Elementary School</u>							
Capacity	448	448	448	448	448	448	448
Enrollment Projection	416	401	408	405	407	411	410
<i>Space Available/Deficit</i>	32	47	40	43	41	37	38
<u>Rosemont Elementary School</u>							
Capacity	613	613	613	613	613	613	613
Enrollment Projection *	596	626	665	655	665	669	668
<i>Space Available/Deficit</i>	17	-13	-52	-42	-52	-56	-55
<u>Strawberry Knoll Elementary School</u>							
Capacity	481	481	481	481	481	481	481
Enrollment Projection	632	645	642	642	640	644	625
<i>Space Available/Deficit</i>	-151	-164	-161	-161	-159	-163	-144
<u>Summit Hall Elementary School</u>							
Capacity	466	466	466	466	466	466	466
Enrollment Projection	671	682	686	694	676	675	657
<i>Space Available/Deficit</i>	-205	-216	-220	-228	-210	-209	-191
<u>Washington Grove Elementary School**</u>							
Capacity	623	623	623	623	623	623	623
Enrollment Projection **	452	465	497	525	553	591	632
<i>Space Available/Deficit</i>	171	158	126	98	70	32	-9

Approach # 6

Reassign Area West of I-270, now in Rosemont ES, to Thomas S. Wootton Cluster

Earliest approach could be implemented is August 2018.

School	Official Enrollment 2015-16	Projected Enrollment					
		2016-17	2017-18	2018-19	2019-20	2020-21	2021-22
<u>Wootton Cluster Elementaries</u> <i>Before reassignment of I-270 west</i>							
Capacity	3,205	3,205	3,205	3,205	3,205	3,205	3,574
Enrollment Projection	2,771	2,672	2,609	2,528	2,494	2,512	2,901
<i>Space Available/Deficit</i>	434	533	596	677	711	693	673
<u>Wootton Cluster Elementaries</u> <i>After reassignment of I-270 west</i>							
Capacity	3,205	3,205	3,205	3,205	3,205	3,205	3,574
Enrollment Projection	2,771	2,672	2,609	2,585	2,593	2,658	3,096
<i>Space Available/Deficit</i>	434	533	596	620	612	547	478

Cluster capacity includes revitalization/expansions of Cold Spring ES to 504 capacity and DuFief ES to 740 capacity (Aug. 2021).

Cluster projection incorporates estimated number of students reassigned to DuFief ES from Carson ES in August 2021 (350 students).

Approach # 7

Reassign Shady Grove Sector Plan, now in Washington Grove ES, to Col. Zadok Magruder Cluster
 Additions at Gaithersburg ES and Strawberry Knoll ES
 Expansion of Summit Hall ES During Rev/Ex in Jan. 2023
 Future Boundary Change to Relieve Rosemont ES

Gaithersburg Cluster Schools

Gaithersburg ES (+10 classrooms), Strawberry Knoll ES (+8 classrooms)

Earliest Shady Grove Plan Reassigned Aug. 2018. Earliest additions could be implemented is August 2020.

School	Official Enrollment 2015-16	Projected Enrollment					
		2016-17	2017-18	2018-19	2019-20	2020-21	2021-22
<u>Gaithersburg Elementary School</u>							
Capacity	771	771	771	771	771	1,001	1,001
Enrollment Projection	867	936	968	993	1,005	991	970
Space Available/Deficit	-96	-165	-197	-222	-234	10	31
<u>Goshen Elementary School</u>							
Capacity	538	538	538	538	538	538	538
Enrollment Projection	581	544	552	546	533	517	528
Space Available/Deficit	-43	-6	-14	-8	5	21	10
<u>Laytonsville Elementary School</u>							
Capacity	448	448	448	448	448	448	448
Enrollment Projection	416	401	408	405	407	411	410
Space Available/Deficit	32	47	40	43	41	37	38
<u>Rosemont Elementary School</u>							
Capacity	613	613	613	613	613	613	613
Enrollment Projection	596	626	665	712	764	815	863
Space Available/Deficit	17	-13	-52	-99	-151	-202	-250
<u>Strawberry Knoll Elementary School</u>							
Capacity	481	481	481	481	481	665	665
Enrollment Projection	632	645	642	642	640	644	625
Space Available/Deficit	-151	-164	-161	-161	-159	21	40
<u>Summit Hall Elementary School</u>							
Capacity	466	466	466	466	466	466	466
Enrollment Projection	671	682	686	694	676	675	657
Space Available/Deficit	-205	-216	-220	-228	-210	-209	-191
<u>Washington Grove Elementary School</u>							
Capacity	623	623	623	623	623	623	623
Enrollment Projection	452	465	497	493	495	502	508
Space Available/Deficit	171	158	126	130	128	121	115

Summit Hall ES revitalization/expansion scheduled for completion in January 2023.

Approach # 7

Reassign Shady Grove Sector Plan, now in Washington Grove ES, to Col. Zadok Magruder Cluster
 Additions at Gaithersburg ES and Strawberry Knoll ES
 Expansion of Summit Hall ES During Rev/Ex in Jan. 2023
 Future Boundary Change to Relieve Rosemont ES

Col. Zadok Magruder Cluster Schools

Earliest Shady Grove Sector Plan Reassigned Aug. 2018.

School	Official Enrollment 2015-16	Projected Enrollment					
		2016-17	2017-18	2018-19	2019-20	2020-21	2021-22
<u>Magruder Cluster Elementaries</u> <i>Before reassignment of I-370 east</i>							
Capacity	2,669	2,652	2,635	2,635	2,635	2,859	2,843
Enrollment Projection	2,636	2,592	2,632	2,615	2,614	2,618	2,609
<i>Space Available/Deficit</i>		60	3	20	21	241	234
<u>Magruder Cluster Elementaries</u> <i>After reassignment of I-370 east</i>							
Capacity	2,669	2,652	2,635	2,635	2,635	2,859	2,843
Enrollment Projection	2,636	2,592	2,632	2,647	2,672	2,707	2,733
<i>Space Available/Deficit</i>		60	3	-12	-37	152	110

* Cluster capacity includes addition to Resnik ES that increases capacity to 701 in Aug. 2020.