

# **Superintendent's Recommendation for Clarksburg Village Site #2 Elementary School Boundaries**

October 29, 2018

## **Executive Summary**

A Boundary Advisory Committee (Committee) convened in spring 2018, and reviewed six options to create the service area for the opening of the new Clarksburg Village Site #2 Elementary School (New School). The school, scheduled to open in September 2019, will be located at 22500 Sweetspire Drive in Clarksburg, Maryland. The Board of Education established the scope of the boundary study to include Cedar Grove and Wilson Wims elementary schools. The New School will address the student enrollment growth at these schools in the Clarksburg Cluster, primarily due to new home construction in the Arora Hills and Clarksburg Village communities. Revised student enrollment projections indicate that Cedar Grove Elementary School will exceed capacity by 193 students and Wilson Wims Elementary School will exceed capacity by 594 students by the 2024–2025 school year.

To formulate my recommendation, I carefully reviewed and considered the community input that includes the Committee report, which contains Committee member evaluations as well as Parent Teacher Association and community association position papers. After review of all the information submitted, and in consideration of updated student enrollment projections, I recommend the boundaries for the New School to be Boundary Advisory Committee Option #2. A map of the recommended boundary and a table that illustrates the effect of the recommendation on Cedar Grove and Wilson Wims elementary schools and the New School appear at the end of this recommendation.

My recommendation includes the following reassignments to the New School and Wilson Wims Elementary School. The zones referenced below are included in the map.

- From Wilson Wims Elementary School, I recommend reassigning neighborhood zones WW3, WW4, and WW8 to the New School.
- From Cedar Grove Elementary School, I recommend reassigning neighborhood zones CG8 and CG-9 to Wilson Wims Elementary School.

I recommend the New School open with Grades K–4 in September 2019, and that Grade 5 students in the areas, recommended to be reassigned, complete elementary school at their current school of attendance. Beginning with the 2020–2021 school year, the New School would serve Grades K–5. The background, analysis of the options, development of the boundary zones, review of boundary options, and the basis for my recommendation follow.

## **Background**

On November 27, 2017, the Board of Education authorized a boundary study to establish the service area for the New School scheduled to open in September 2019. The new elementary school now under construction will address student enrollment growth and space deficits at Cedar Grove and Wilson Wims elementary schools. Cedar Grove and Wilson Wims elementary schools articulate to Hallie Wells Middle School, but then split articulation to Clarksburg and Damascus high schools. The scope did not include any changes to middle or high school boundaries.

The Committee included representatives from Cedar Grove and Wilson Wims elementary schools, the Clarksburg Cluster coordinators, and representatives from the Asian Pacific American Student Achievement Action Group (APASAAG), and National Association for the Advancement of Colored People. The role of Committee members was to represent the issues and concerns of their schools and communities, develop criteria to develop boundary options, and evaluate these options at the end of the process. Committee members also served as liaisons to the communities they represented, obtaining feedback on the boundary options and sharing this feedback with the Committee.

The Committee met from March to May 2018 and evaluated six options (see Attachment A for the six options reviewed by the Committee). Montgomery County Public Schools (MCPS) Division of Capital Planning staff held Committee meetings at Hallie Wells Middle School and Public Information meetings at both Hallie Wells Middle School at the onset of the process and Cedar Grove Elementary School at the conclusion of the process. Time was set aside at the end of each meeting to address questions and comments from observers who attended the meetings. The Committee report was submitted to the superintendent of schools and Board of Education on July 6, 2018.

## **Development of the Boundary Zone**

In order to develop options, each school service area was subdivided into smaller geographic areas called zones by using a variety of different geographic features. For this study, areas labeled with “CG#” are zones currently assigned to Cedar Grove Elementary School while the zones labeled “WW#” are zones currently assigned to Wilson Wims Elementary School. The zones were used to create the options for the New School.

Staff in the MCPS Department of Transportation (DOT) were consulted to identify the safe walking areas for each school including the New School. DOT staff identified Zone CG1 as the area where students could safely walk to Cedar Grove Elementary School and Zone WW1 as the only area where students could safely walk to Wilson Wims Elementary School. Zones WW2, WW5, and WW6 were areas where students could walk to Wilson Wims Elementary School and the New School. However, after an evaluation, it was determined that students could not safely walk to the New School because they would have to cross a traffic circle at Snowden Farms Parkway and Little Seneca Parkway. Therefore, the safe walk areas

for the New School were identified as Zones WW3, WW4, and WW8, with the assistance of future crossing guards. Although Zones CG3, CG4, CG5, and CG8 also are within the walking zone of the New School, it also was determined that students could not safely walk to the New School.

In addition to identifying the walk area, zones were identified using other geographic features, such as major roads including Snowden Farms Parkway and Little Seneca Parkway in the Wilson Wims Elementary School service area and Ridge Road in the Cedar Grove Elementary School service area. Large neighborhood subdivisions such as Clarksburg Village and Arora Hills also were used as guides to create zones. Because the Arora Hills development was built in two phases, community members expressed interest in keeping Zones CG8 and CG9 together and CG3, CG4, and CG5 together whenever possible.

### **Review of Boundary Options**

During the Committee work, the previous Board of Education Policy FAA, *Long-range Educational Facilities Planning* and MCPS Regulation FAA-RA, *Long-range Educational Facilities Planning*, guided the Committee process. On September 24, 2018, the Board of Education adopted a revised Policy FAA, *Educational Facilities Planning*. Although there are revisions to the policies, both the new and revised policies outline the same four factors that guide the development of options that include:

- Demographic characteristics of student population
- Geography
- Stability of school assignments over time
- Facility utilization

Regulation FAA-RA currently is under review.

Before developing options, the stability of school assignments over time factor was considered to determine if any students would be impacted by the boundary study for the New School, given that Wilson Wims Elementary School recently opened. In reviewing the data, it was determined that no students previously reassigned to Wilson Wims Elementary School would be impacted by this boundary study. Therefore, the development of the boundary options focused on the other three factors.

The Board of Education approved the opening of the New School to address the student enrollment growth and space deficits at Cedar Grove and Wilson Wims elementary schools. The following table displays the racial/ethnic composition for the two schools for the 2018–2019 school year as well as the Free and Reduced-price Meals System (FARMS) and English for Speakers of Other Languages (ESOL) percentages for the 2017–2018 school year (the most current figures for these two categories).

**Racial/Ethnic Composition**

	<b>2018–2019</b>					<b>2017–2018</b>	
<b>School</b>	<b>% Black or African American</b>	<b>% Asian</b>	<b>% Hispanic/Latino</b>	<b>% White</b>	<b>% Two or More Races</b>	<b>% FARMS</b>	<b>% ESOL</b>
Cedar Grove ES	13.2	38.7	10.8	32.8	4.6	9.7	11.3
Wilson Wims ES	15.1	43.5	13.4	21.5	6.5	10.7	10.1

The differences in the racial and ethnic composition of the student body between the two schools range from a difference of 11.3 percent in the White student population to a difference of 1.9 percent in the Black or African American and the Two or More Races student populations. The percentages of students approved for FARMS and ESOL services for both schools is very close in range, with a 1.0 percent difference in FARMS and a 1.2 percent difference in ESOL. As a point of reference, the countywide average for FARMS participation in elementary schools is 39.1 percent in the 2017–2018 school year, and the countywide average for ESOL participation in elementary schools is 25.1 percent.

Given the similar make-up of the student body at both schools, the option development began by reviewing options that created the most geographic proximity. It is important to note that currently the total number of seats available among the three schools is slightly less than the total number of students at the two schools.. Therefore, there will be a projected deficit among the three schools throughout the six-year planning period. Given that the boundary zones were developed based on geographic features, the number of students in each zone will differ; therefore, it may be challenging to create options that would bring all three schools close to an even level of capacity. The following table indicates the total number of seats available across the three schools.

**Total Number of Seats Available**

	<b>2019–20</b>	<b>2020–21</b>	<b>2021–22</b>	<b>2022–23</b>	<b>2023–24</b>	<b>2024–25</b>
Total Number of Seats	1,911	1,911	1,911	1,911	1,911	1,911
<b>Total Number of Students</b>	<b>1,889</b>	<b>1,932</b>	<b>1,956</b>	<b>1,953</b>	<b>1,950</b>	<b>1,957</b>
<i>Total Space Available</i>	22	-22	-45	-42	-39	-46

It is important to note that the data for the options reflect that Grade 5 students would be grandfathered for the 2019–2020 school year; therefore the full impact of the boundary study will not be fully implemented in the first year. In the 2019–2020 school year, only Grades K–4 students are reassigned. The following analysis regarding space availability and utilization rates reflects the impact of the proposed reassignments on the 2020–2021 through 2024–2025 school years.

**Option 1**

Option 1, which most maximizes the factor of geography, reassigns Zones WW2, WW4, and WW8 from Wilson Wims Elementary School to the New School. This option provides a compact service area for the New School and maximizes the number of walkers to this school. No other students

are reassigned in this option. Although there would be a deficit at the New School throughout the planning period, the utilization would be in the range of 105 to 109 percent for the six-year planning period. This utilization rate translates to a space deficit of 38 to 67 seats.

This option does not reassign students from Cedar Grove Elementary School and it does not address the significant space deficit of 193 to 218 seats throughout the 6-year planning period. Cedar Grove Elementary School would continue to operate with at least seven relocatable classrooms and a utilization rate of more than 140–150 percent, well more than the current guidelines in Regulation FAA-RA that identify 80 to 100 percent utilization as an efficient range. The student enrollment at Wilson Wims Elementary School would significantly drop from more than 1,300 students to fewer than 600 students throughout the six-year planning period and the facility would run at a utilization rate below the 80 to 100 percent range outlined in Regulation FAA-RA throughout the six-year planning period. Wilson Wims would have 184 to 205 seats available throughout the six-year planning period.

In looking at the demographic data for the schools, there would be a 1.8 percent difference in the FARMS participation rate and a 2.8 percent difference in the ESOL population. The Asian population would be the largest of all the options at 50.3 percent at the New School and smallest at Wilson Wims Elementary School at 36.3 percent. The White population would be the smallest of all the options at the New School at 18.2 percent and the Hispanic/Latino population would be the largest at Wilson Wims Elementary School at 14.1 percent. The difference in the Asian population is the greatest of all the options at 14.0 percent.

The Cedar Grove Elementary School Parent Teacher Association (PTA) position paper contained in the Committee report expresses support for this option, based on an interest in not changing the boundaries of Cedar Grove Elementary School and not disrupting its school community. The position paper expresses that the school can continue to operate successfully at the current levels of overutilization. Although the Wilson Wims Elementary School community expressed some support for this option during the boundary process, Committee members also expressed concerns that the significant drop in student enrollment could have an effect on staffing levels at the school. APASAAG expressed support for this option as it met the criteria established at the onset of the boundary process. It also expressed support to keep Zones CG8 and CG9 together, which this option does by keeping this area of Arora Hills at Cedar Grove Elementary School.

## Option 2

Given the utilization rates issues previously described with Option 1, Option 2 addresses the high utilization rates at Cedar Grove Elementary School and low utilization rates at Wilson Wims Elementary School. This option reassigns the same zones from Wilson Wims Elementary School to the New School and also reassigns Zones CG8 and CG9 from Cedar Grove Elementary School to Wilson Wims Elementary School. This option brings the utilization rate of Cedar Grove Elementary School within the desired range of 80 to 100 percent throughout the six-year planning period. For Wilson Wims Elementary School, it decreases the enrollment from the 1,300–student enrollment range to an enrollment of range of 774 to 785 and a utilization rate of 103 to 104 percent. The space deficit for Wilson Wims Elementary School would be 22 to 33 seats throughout the six-year planning period.

The demographic make-up of the New School in this option is the same as described above in Option 1. However, reassigning students from Cedar Grove Elementary School to Wilson Wims Elementary School results in a 2.3 percent higher Asian population at Wilson Wims Elementary School than in Option 1, and a 1.8 percent lower Hispanic/Latino population at Wilson Wims Elementary School than in Option 1. With regard to the FARMS and ESOL populations, there would be a 3.5 percent difference in the FARMS participation rate among the three schools and a 5.2 percent difference in the ESOL rate among the three schools. In addition, all of the schools would still be well below the countywide average.

The Cedar Grove Elementary School PTA position paper did not support this option. However, the Wilson Wims Elementary School community expressed some support for this option during the Committee process, as it would increase the population of the school to a number that is close to its capacity and would address some of the staffing concerns raised with Option 1. APASAAG also supported Option 2 as it addressed criteria established in the boundary process and reassigns Zones CG8 and CG9 from Arora Hills to Wilson Wims Elementary School.

### Option 3

In this option, Zones CG4, WW3, and WW8 would be reassigned to the New School. Although these zones are contiguous, Zone WW4 is located directly across the street from the New School, but would not be reassigned to the New School. As previously noted, students that live in Zone WW4 could walk to the New School so this option does not maximize the number of walkers to the New School. This option also reassigns Zone CG4 from Cedar Grove Elementary School to the New School. Zone CG4 is part of the Arora Hills community so this option would have students from the Arora Hills development attending two schools. The Arora Hills community previously raised this issue in the boundary study that created the service area for Wilson Wims Elementary School. Although Zone CG4 is located south of Little Seneca Parkway, the residents of this zone lobbied the Board of Education to be assigned to the same school as Zones CG3 and CG5.

With this option, Cedar Grove Elementary School would continue to operate at a utilization rate of 106 to 128 percent or a space deficit of 24 to 116 seats throughout the six-year planning period. Wilson Wims and the New School would fall within the desired range of 80 to 100 percent for the 6-year planning period.

There would be 1.8 percent difference in the FARMS participation and a 2.8 percent difference among the three schools. In this option, the Hispanic/Latino population is the lowest of all the options at Cedar Grove Elementary School at 10.5 percent.

### Option 4

In Option 4, Zones WW3 and WW4 from Wilson Wims Elementary School and Zones CG3, CG4, and CG5 from Cedar Grove Elementary School would be reassigned to the New School.

This option creates an island assignment of Zone WW8, a zone identified to walk to the New School. Therefore, it does not maximize the number of walkers that could walk to the school. It does reassign one section of Arora Hills (CG3, CG4, and CG5) to the New School.

Cedar Grove Elementary School would operate at a desired utilization range of 80 to 100 percent with seats available throughout the 6-year planning period. Wilson Wims Elementary School would operate at a utilization rate of 98 to 101 percent. The school would have seats available for most of the six-year planning period. The New School would operate at a utilization rate of 111 to 112 percent or an 82 to 91 seat deficit throughout the six-year planning period.

This option creates the least diverse student body in each of the schools of all the options. The difference in the FARMS participation rate would be 5.8 percent and the ESOL population would be 5.3 percent, the highest for both categories of all six options considered in this boundary study. Furthermore, this option has the greatest difference in the Black or African American population at 5.1 percent, the Hispanic/Latino population at 3.2 percent, and the White population at 15.5 percent. The New School would have the highest Black or African American population at 17.9 percent while Wilson Wims Elementary School would have the lowest Black or African American population at 12.5 percent and a FARMS participation rate at 7.4 percent.

#### Option 5

In Option 5, Zones WW2, WW3, and WW8 from Wilson Wims Elementary School are reassigned to the New School and Zone CG9 is reassigned to Wilson Wims Elementary School. Similar to Option 3, Zone WW4, where students can walk to the New School, would remain at Wilson Wims Elementary School. In addition, Zone WW2, where students currently walk to Wilson Wims Elementary School, would be reassigned to the New School and have to be bussed. Therefore, this option does not maximize walkers despite being a contiguous boundary. In addition, it assigns areas of Arora Hills (CG8 and CG9) to two different schools.

With regard to utilization, Cedar Grove Elementary School would operate at a utilization rate of 121 to 123 percent throughout the six-year planning period with a space deficit of 71 to 95 seats. The New School would operate at a utilization rate of 98 to 102 percent with space available for part of the 6-year planning period and a small space deficit at the end of the planning period. Wilson Wims Elementary School would operate at the desired range of 80 to 100 percent throughout the 6-year planning period.

This option creates the smallest difference in the FARMS participation rate of all the options at 1.7 percent. Moreover, this option creates the smallest difference in the Hispanic/Latino population at 0.6 percent and the White population at 5.3 percent.

#### Option 6

This option is geographically similar to Option 5 with one change; it reassigns Zone CG8 instead of Zone CG9 from Cedar Grove Elementary School to Wilson Wims Elementary School. Once again, this area of Arora Hills (CG8 and CG9) would be assigned to two different schools. Cedar Grove Elementary School would operate with a utilization rate of 121 to 127 percent

throughout the 6-year planning period and a space deficit of 89 to 114 seats. The New School would operate with a utilization rate of 98 to 102 percent with some space available for the first 2 years and a small space deficit the last 4 years. Wilson Wims Elementary School would operate within the desired range of 80 to 100 percent.

The difference in the FARMS participation rate would be 2.7 percent and the ESOL population would be 4.1 percent. The ESOL population, however, would be the lowest of all the options at Wilson Wims Elementary School at 8.1 percent. The difference in the African American population would be the smallest among all the schools at 3.0 percent and the Asian American population at 3.6 percent.

### **Superintendent's Recommendation**

I commend the work of the Clarksburg Village Site #2 Elementary School Boundary Advisory Committee. I carefully considered the option evaluations, the position papers submitted by the Cedar Grove PTA and Wilson Wims Elementary School PTA and APASAAG, as well as input received from the community at large. I also reviewed the following three factors outlined in Board of Education Policy FAA, *Educational Facilities Planning*, and MCPS Regulation FAA-RA, *Long-range Educational Facilities Planning*, that affect these schools to develop my recommendations:

- Demographic characteristics of student population;
- Geography; and
- Facility utilization.

This boundary recommendation will maintain diverse student bodies at all three schools. Given that the current demographic profiles for Cedar Grove and Wilson Wims elementary schools are within 11.3 percent range of each other, none of the boundary options result in large scale shifts of the demographic profiles of the current schools or create a completely different demographic profile in the New School. The current FARMS participation rates for Cedar Grove and Wilson Wims elementary schools, which are 9.7 and 10.7 percent, respectively, are lower than the countywide average for elementary schools of 39.1 percent in the 2017–2018 school year. Similarly, the current ESOL rates for the Cedar Grove and Wilson Wims elementary schools for the 2017–2018 school year also are lower than the countywide elementary school average of 25.1 percent, at 12.2 and 10.1, respectively.

Since the Boundary Advisory Committee met, the student enrollment forecast was updated, which did not significantly increase the enrollments at Cedar Grove and Wilson Wims elementary schools. The development in the Clarksburg Village and Arora Hills developments are complete with only in-fill construction observed in the area. At this time, there are no new housing developments planned for this section of the county; therefore, significant student enrollment increases are not expected to continue, as has been the experience for the past several years at these schools. The enrollment projections indicate slight increases for the six years; however, as noted previously, there are more students than there is capacity; therefore, my recommendation will need to leave one or more schools slightly greater than capacity for the six-year planning period.



Given the demographic profiles, the slowdown in student enrollment, and space availability at these schools, I recommend Option #2 from the Boundary Advisory Committee. I believe that this option most effectively maximizes the benefits of the three factors for these schools. My recommendation creates diverse student bodies that are similar to each other. No one category in the racial/ethnic profile shifts significantly compared to the other options that were developed. There would be a 3.5 percent difference in the FARMS participation rate among the three schools, with approximately 8.2 percent at Cedar Grove Elementary School, 9.6 percent at the New School, and 11.7 percent at Wilson Wims Elementary School. There would be a 5.2 percent difference in the ESOL rate among the three schools, with approximately 13.4 percent at Cedar Grove Elementary School, 10.7 percent at the New School, and 8.2 percent at Wilson Wims Elementary School. It is important to note that these figures can change from year to year.

This recommendation addresses the overutilization at both Cedar Grove and Wilson Wims elementary schools, which was one of the primary goals for the opening of the New School. This option reduces the student enrollment at Cedar Grove Elementary School to a level that will allow the school to operate with a utilization rate of 80 to 100 percent. Although the option leaves the New School and Wilson Wims elementary schools with utilization rates higher than the desired range of 80 to 100 percent, these schools were designed with current educational standards and have the core facilities to accommodate the projected space deficits. This option also maximizes the number of walkers for Clarksburg Village Site #2 Elementary School while maintaining the current walkers at Wilson Wims Elementary School. The boundaries align with major roadways when possible, while respecting the request of the communities to stay together by reassigning the area of Arora Hills (Zones CG8 and CG9) from Cedar Grove Elementary School to Wilson Wims Elementary School.

My recommendation includes the following reassignments to Clarksburg Village Site #2 Elementary School and Wilson Wims Elementary School. The zones referenced below are included in the map following this recommendation along with a table that displays the student enrollment, percent of building occupied, and available seats for each school.

- From Wilson Wims Elementary School, I recommend reassigning neighborhood zones WW3, WW4, and WW8 to Clarksburg Village Site #2 Elementary School.
- From Cedar Grove Elementary School, I recommend reassigning neighborhood zones CG8 and CG9 to Wilson Wims Elementary School.

I recommend Clarksburg Village Site #2 Elementary School open with Grades K–4 in September 2019 and that Grade 5 students in the areas recommended to be reassigned be allowed to complete elementary school at their current school of attendance. Beginning with the 2020–2021 school year, Clarksburg Village Site #2 Elementary School would serve Grades K–5.

Although I appreciate the Cedar Grove Elementary School PTA’s interest in maintaining all of its students at its current school through Option 1, it would not be fiscally responsible to have Wilson Wims Elementary School operate at significantly less than capacity while Cedar Grove Elementary School continues to operate at significantly more than capacity. If Option 1 were implemented, Cedar Grove Elementary School would operate with a space deficit

in the range of 193 to 218 seats, while Wilson Wims Elementary School would operate with 184 to 223 seats available throughout the 6-year planning period. The space deficit at Cedar Grove Elementary School and space availability at Wilson Wims Elementary School are similar and the schools are geographically adjacent to each other. My recommendation, Option 2, not only creates a diverse student body that maximizes walkers, but it also efficiently utilizes our facilities and resources. Therefore, I cannot support Option 1.

After the boundary study process was complete, some community members expressed support for Option 4. As described earlier in this report, Option 4 creates the least diverse student bodies for the three schools of all the options. In addition, it creates an island assignment for Zone WW8, a zone that could walk to the New School. Both of these issues go against two factors outlined in Policy FAA and Regulation FAA-RA and, therefore, I cannot support Option 4.

In Options 3, 5, and 6, Zone WW4, a neighborhood that is located directly across the street and will walk to the New School, would not be reassigned to the New School. These options do not maximize the number of walkers and traffic patterns and, therefore, I cannot support these options. Because Option 2 maximizes walkers while creating diverse student bodies, and at the same time addresses the space deficits at the schools, I recommend Option 2.

## **Summary**

With student enrollment leveling off in this part of the Clarksburg area and the comparable demographic profiles for the schools, my recommendation for Option 2 optimally creates a diverse student body for each school in the boundary study, while maximizing walkers and utilizing our schools in the most efficient manner.

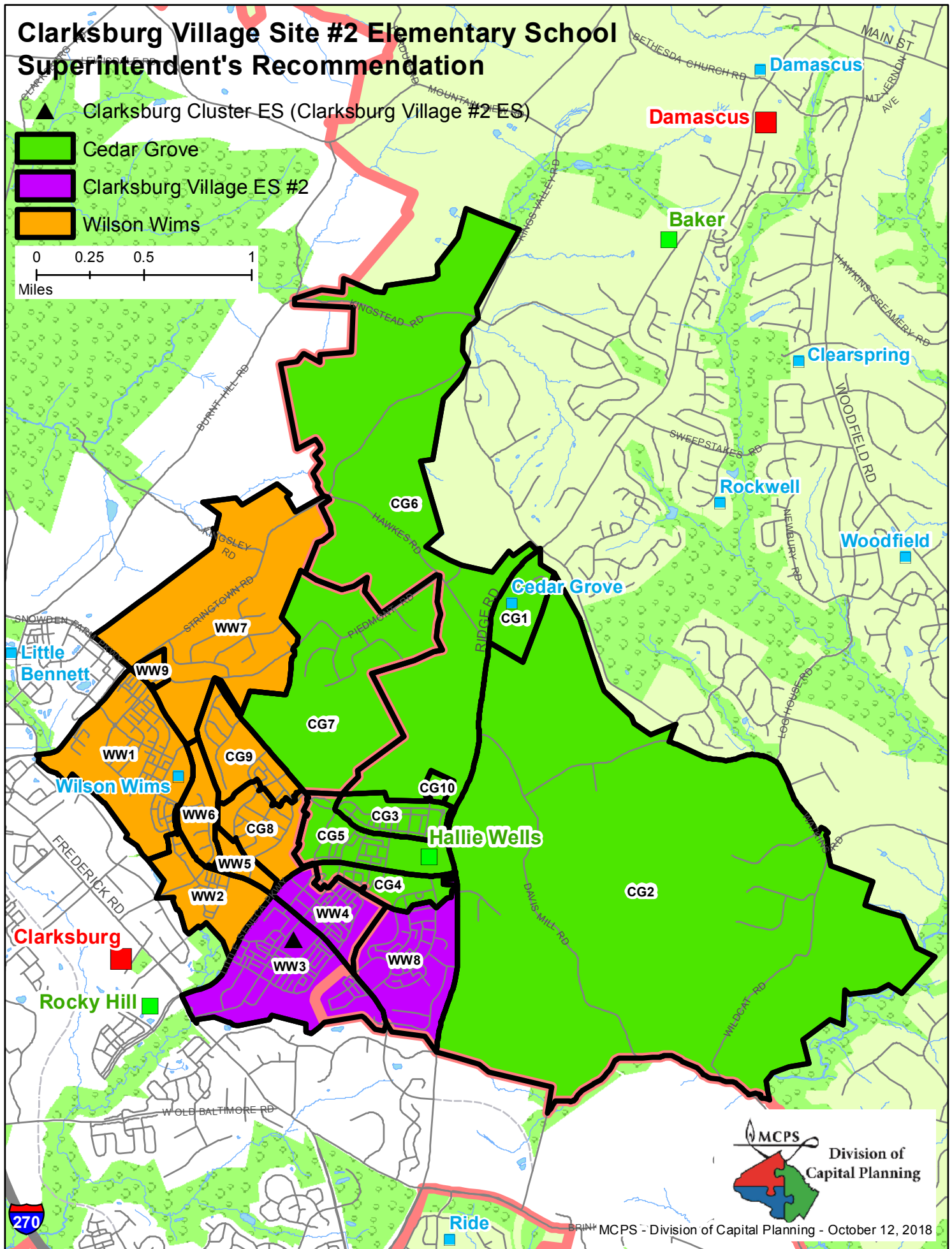
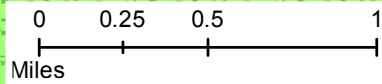
# Clarksburg Village Site #2 Elementary School Superintendent's Recommendation

▲ Clarksburg Cluster ES (Clarksburg Village #2 ES)

■ Cedar Grove

■ Clarksburg Village ES #2

■ Wilson Wims



# Superintendent's Recommendation

## Clarksburg Village Site #2 Elementary School

### Boundary Study

October 2018

Reassign Zones WW3, WW4, and WW8 from Wilson Wims ES to Clarksburg Village Site #2 ES

Reassign Zones CG 8 and CG 9 from Cedar Grove ES to Wilson Wims ES

School	2018–19						2017–18						
	Projected Number of Students						Race/Ethnic Composition					2017–18	
	2019–20	2020–21	2021–22	2022–23	2023–24	2024–25	% Afr. Amer.	% Asian	% Hispanic	% White	% 2 or More	% FARMS	% ESOL
Cedar Grove ES													
Maximum Number of Seats= 418													
<u>No Change:</u>													
Number of Students	636	636	633	614	605	611							
Percent of Building Occupied	152%	152%	151%	147%	145%	146%	13.2%	38.7%	10.8%	32.8%	4.6%	9.7%	11.3%
Available Seats	-218	-218	-215	-196	-187	-193							
<u>With Change:</u>													
Number of Students	443	409	407	395	391	394							
Percent of Building Occupied	106%	98%	97%	94%	93%	94%	14.2%	41.0%	13.0%	27.7%	4.1%	8.2%	13.4%
Available Seats	-25	9	11	23	27	24							
Clarksburg Village Site #2 ES													
Maximum Number of Seats= 741													
<u>With Change:</u>													
Number of Students	649	779	795	804	807	808							
Percent of Building Occupied	88%	105%	107%	108%	109%	109%	15.5%	50.3%	11.6%	18.2%	4.5%	9.6%	10.7%
Available Seats	92	-38	-54	-63	-66	-67							
Wilson Wims ES													
Maximum Number of Seats= 752													
<u>No Change:</u>													
Number of Students	1253	1296	1323	1339	1345	1346							
Percent of Building Occupied	167%	172%	176%	178%	179%	179%	15.1%	43.5%	13.4%	21.5%	6.5%	10.1%	11.3%
Available Seats	-501	-544	-571	-587	-593	-594							
<u>With Change:</u>													
Number of Students	827	774	784	784	782	785							
Percent of Building Occupied	110%	103%	104%	104%	104%	104%	15.0%	38.6%	12.3%	27.9%	6.2%	11.7%	8.2%
Available Seats	-75	-22	-32	-32	-30	-33							

In the 2019–2020 school year, the new school would open with Grades K–4 students only. Grade 5 students would be grandfathered at Cedar Grove and Wilson Wims elementary schools. In the 2020–2021 school year, Grade 5 students would articulate to Clarksburg Village Site #2 ES. The enrollment at Clarksburg Village Site #2 ES reflects 30 special education students.

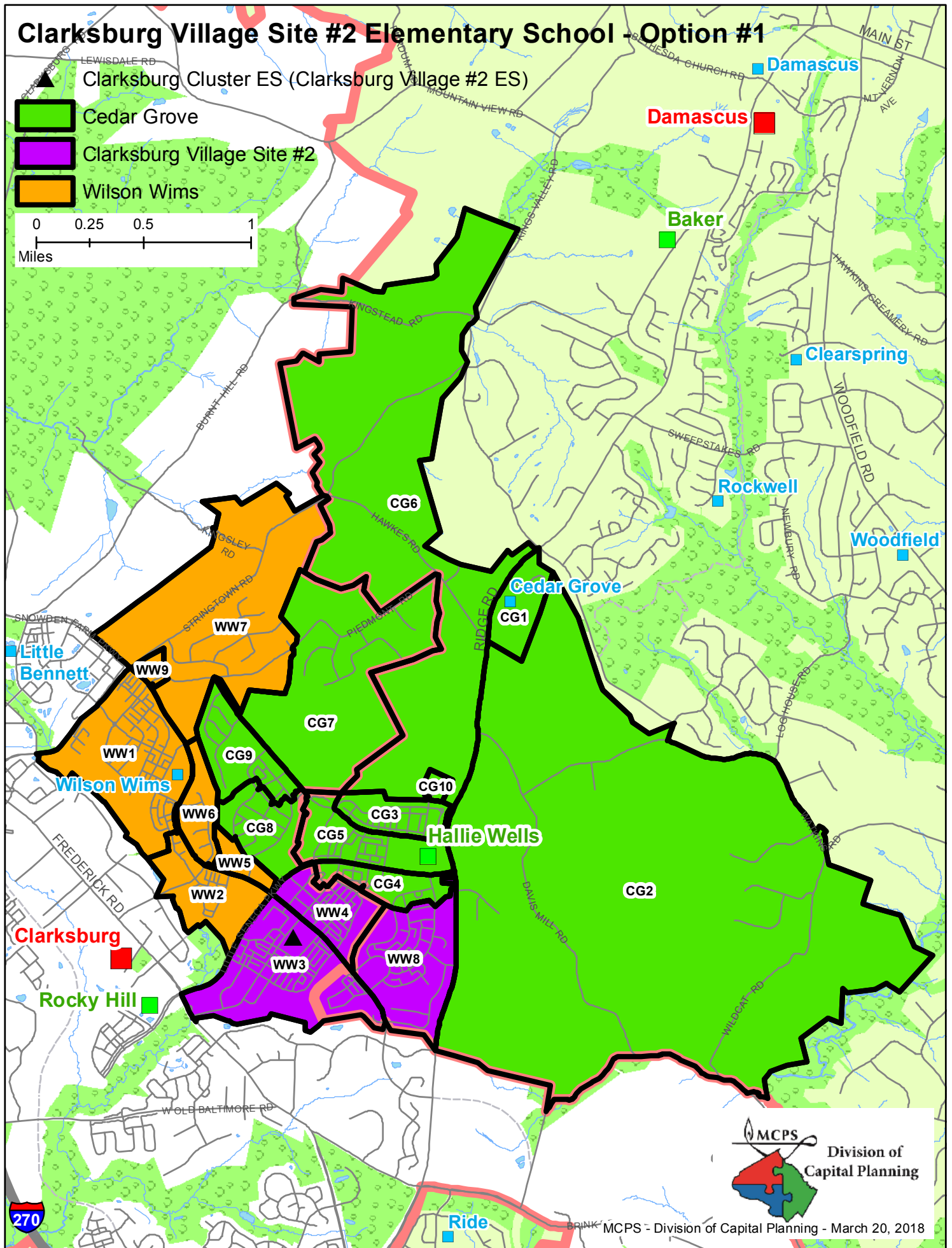
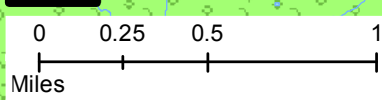
# Clarksburg Village Site #2 Elementary School - Option #1

▲ Clarksburg Cluster ES (Clarksburg Village #2 ES)

■ Cedar Grove

■ Clarksburg Village Site #2

■ Wilson Wims



# Option #1

## Clarksburg Village Site #2 Elementary School

### Boundary Study

October 2018

Reassign Zones WW3, WW4, and WW8 from Wilson Wims ES to Clarksburg Village Site #2 ES

School	Projected Number of Students						2018–19					2017–18	
							Race/Ethnic Composition						
	2019–20	2020–21	2021–22	2022–23	2023–24	2024–25	% Afr. Amer.	% Asian	% Hispanic	% White	% 2 or More	% FARMS	% ESOL
Cedar Grove ES													
Maximum Number of Seats= 418													
<u>No Change:</u>													
Number of Students	636	636	633	614	605	611							
Percent of Building Occupied	152%	152%	151%	147%	145%	146%	13.2%	38.7%	10.8%	32.8%	4.6%	9.7%	11.3%
Available Seats	-218	-218	-215	-196	-187	-193							
<u>With Change:</u>													
Number of Students	636	636	633	614	605	611							
Percent of Building Occupied	152%	152%	151%	147%	145%	146%	14.7%	42.1%	11.1%	27.8%	4.3%	9.7%	11.3%
Available Seats	-218	-218	-215	-196	-187	-193							
Clarksburg Village Site #2 ES													
Maximum Number of Seats= 741													
<u>With Change:</u>													
Number of Students	649	779	795	804	807	808							
Percent of Building Occupied	88%	105%	107%	108%	109%	109%	15.5%	50.3%	11.6%	18.2%	4.5%	10.1%	11.3%
Available Seats	92	-38	-54	-63	-66	-67							
Wilson Wims ES													
Maximum Number of Seats= 752													
<u>No Change:</u>													
Number of Students	1236	1296	1323	1339	1345	1346							
Percent of Building Occupied	164%	172%	176%	178%	179%	179%	15.1%	43.5%	13.4%	21.5%	6.5%	10.7%	10.1%
Available Seats	-484	-544	-571	-587	-593	-594							
<u>With Change:</u>													
Number of Students	634	547	558	565	568	568							
Percent of Building Occupied	84%	73%	74%	75%	75%	76%	14.7%	36.3%	14.1%	27.9%	6.9%	11.5%	8.5%
Available Seats	118	205	194	187	184	184							

In the 2019–2020 school year, the new school would open with Grades K–4 students only. Grade 5 students would be grandfathered at Cedar Grove and Wilson Wims elementary schools. In the 2020–2021 school year, Grade 5 students would articulate to Clarksburg Village Site #2 ES. The enrollment at Clarksburg Village Site #2 ES reflects 30 special education students.



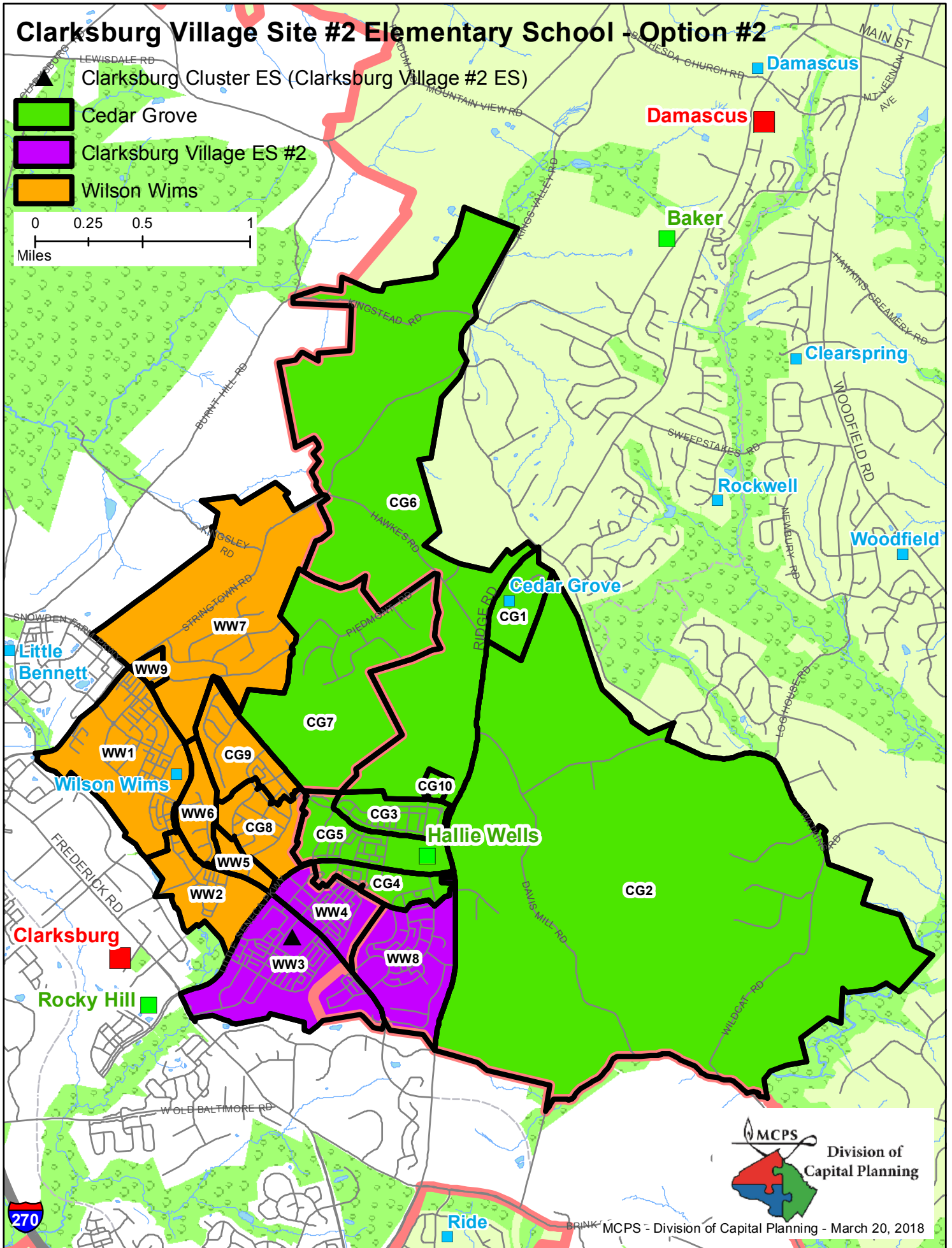
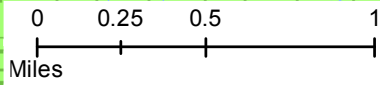
# Clarksburg Village Site #2 Elementary School - Option #2

▲ Clarksburg Cluster ES (Clarksburg Village #2 ES)

■ Cedar Grove

■ Clarksburg Village ES #2

■ Wilson Wims



# Option #2

## Clarksburg Village Site #2 Elementary School

### Boundary Study

October 2018

Reassign Zones WW3, WW4, and WW8 from Wilson Wims ES to Clarksburg Village Site #2 ES  
 Reassign Zones CG 8 and CG 9 from Cedar Grove ES to Wilson Wims ES

School	Projected Number of Students						2018–19					2017–18	
							Race/Ethnic Composition						
	2019–20	2020–21	2021–22	2022–23	2023–24	2024–25	% Afr. Amer.	% Asian	% Hispanic	% White	% 2 or More	% FARMS	% ESOL
<b>Cedar Grove ES</b>													
<b>Maximum Number of Seats= 418</b>													
<u><b>No Change:</b></u>													
<b>Number of Students</b>	<b>636</b>	<b>636</b>	<b>633</b>	<b>614</b>	<b>605</b>	<b>611</b>							
<i>Percent of Building Occupied</i>	<i>152%</i>	<i>152%</i>	<i>151%</i>	<i>147%</i>	<i>145%</i>	<i>146%</i>	<i>13.2%</i>	<i>38.7%</i>	<i>10.8%</i>	<i>32.8%</i>	<i>4.6%</i>	<i>9.7%</i>	<i>11.3%</i>
Available Seats	-218	-218	-215	-196	-187	-193							
<u><b>With Change:</b></u>													
<b>Number of Students</b>	<b>443</b>	<b>409</b>	<b>407</b>	<b>395</b>	<b>391</b>	<b>394</b>							
<i>Percent of Building Occupied</i>	<i>106%</i>	<i>98%</i>	<i>97%</i>	<i>94%</i>	<i>93%</i>	<i>94%</i>	<i>14.2%</i>	<i>41.0%</i>	<i>13.0%</i>	<i>27.7%</i>	<i>4.1%</i>	<i>8.2%</i>	<i>13.4%</i>
Available Seats	-25	9	11	23	27	24							
<b>Clarksburg Village Site #2 ES</b>													
<b>Maximum Number of Seats= 741</b>													
<u><b>With Change:</b></u>													
<b>Number of Students</b>	<b>649</b>	<b>779</b>	<b>795</b>	<b>804</b>	<b>807</b>	<b>808</b>							
<i>Percent of Building Occupied</i>	<i>88%</i>	<i>105%</i>	<i>107%</i>	<i>108%</i>	<i>109%</i>	<i>109%</i>	<i>15.5%</i>	<i>50.3%</i>	<i>11.6%</i>	<i>18.2%</i>	<i>4.5%</i>	<i>9.6%</i>	<i>10.7%</i>
Available Seats	92	-38	-54	-63	-66	-67							
<b>Wilson Wims ES</b>													
<b>Maximum Number of Seats= 752</b>													
<u><b>No Change:</b></u>													
<b>Number of Students</b>	<b>1253</b>	<b>1296</b>	<b>1323</b>	<b>1339</b>	<b>1345</b>	<b>1346</b>							
<i>Percent of Building Occupied</i>	<i>167%</i>	<i>172%</i>	<i>176%</i>	<i>178%</i>	<i>179%</i>	<i>179%</i>	<i>15.1%</i>	<i>43.5%</i>	<i>13.4%</i>	<i>21.5%</i>	<i>6.5%</i>	<i>10.1%</i>	<i>11.3%</i>
Available Seats	-501	-544	-571	-587	-593	-594							
<u><b>With Change:</b></u>													
<b>Number of Students</b>	<b>827</b>	<b>774</b>	<b>784</b>	<b>784</b>	<b>782</b>	<b>785</b>							
<i>Percent of Building Occupied</i>	<i>110%</i>	<i>103%</i>	<i>104%</i>	<i>104%</i>	<i>104%</i>	<i>104%</i>	<i>15.0%</i>	<i>38.6%</i>	<i>12.3%</i>	<i>27.9%</i>	<i>6.2%</i>	<i>11.7%</i>	<i>8.2%</i>
Available Seats	-75	-22	-32	-32	-30	-33							

In the 2019–2020 school year, the new school would open with Grades K–4 students only. Grade 5 students would be grandfathered at Cedar Grove and Wilson Wims elementary schools. In the 2020–2021 school year, Grade 5 students would articulate to Clarksburg Village Site #2 ES. The enrollment at Clarksburg Village Site #2 ES reflects 30 special education students.



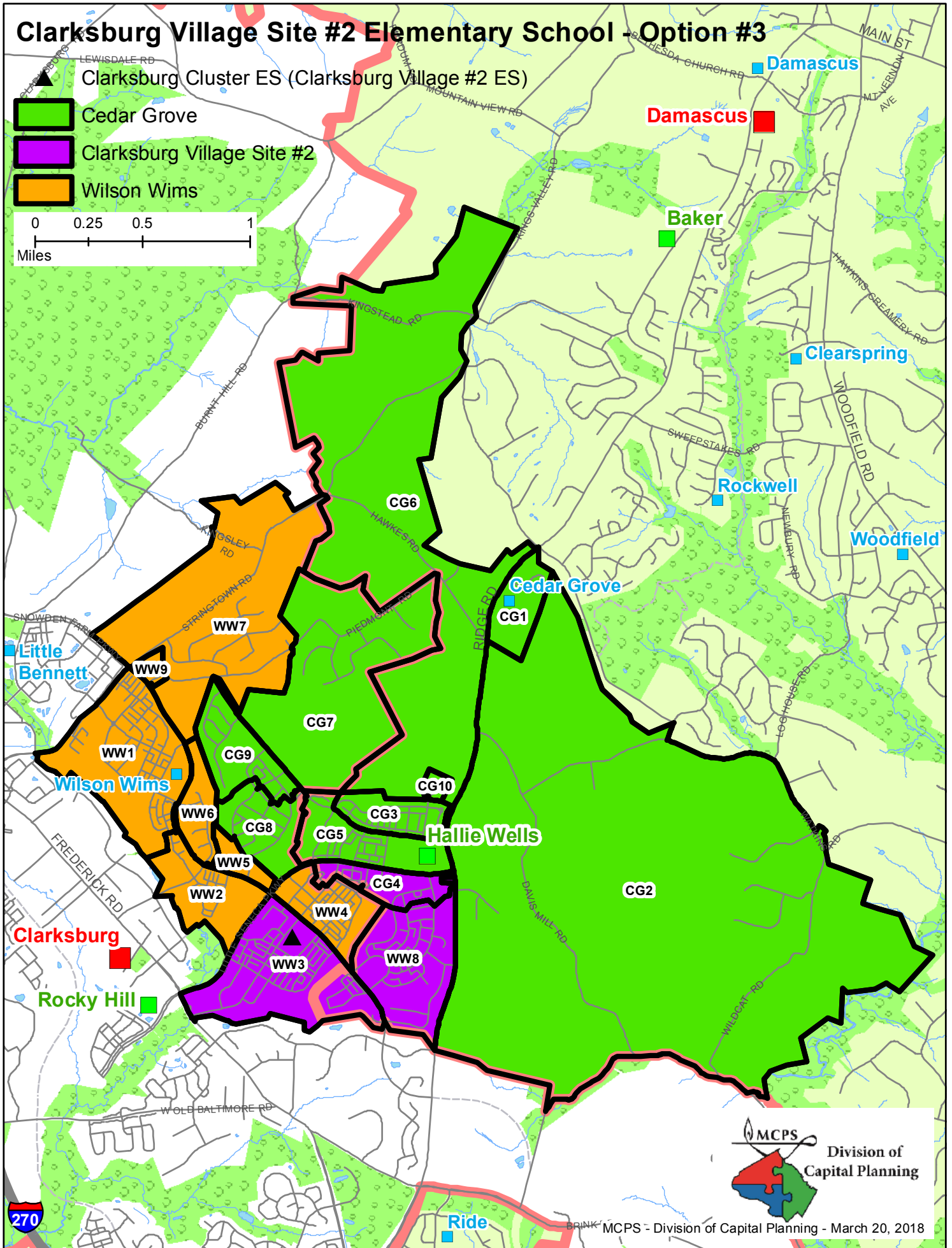
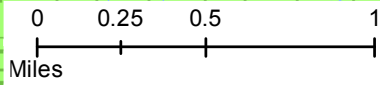
# Clarksburg Village Site #2 Elementary School - Option #3

▲ Clarksburg Cluster ES (Clarksburg Village #2 ES)

■ Cedar Grove

■ Clarksburg Village Site #2

■ Wilson Wims



MCPS - Division of Capital Planning - March 20, 2018

# Option #3

## Clarksburg Village Site #2 Elementary School

### Boundary Study

October 2018

Reassign Zones CG4 from Cedar Grove ES and WW3 and WW8 from Wilson Wims ES to Clarksburg Village Site #2 ES

School	Projected Number of Students						2018–19					2017–18	
							Race/Ethnic Composition						
	2019–20	2020–21	2021–22	2022–23	2023–24	2024–25	% Afr. Amer.	% Asian	% Hispanic	% White	% 2 or More	% FARMS	% ESOL
<b>Cedar Grove ES</b>													
<b>Maximum Number of Seats= 418</b>													
<b><u>No Change:</u></b>													
<b>Number of Students</b>	<b>636</b>	<b>636</b>	<b>633</b>	<b>614</b>	<b>605</b>	<b>611</b>							
<i>Percent of Building Occupied</i>	152%	152%	151%	147%	145%	146%	13.2%	38.7%	10.8%	32.8%	4.6%	9.7%	11.3%
Available Seats	-218	-218	-215	-196	-187	-193							
<b><u>With Change:</u></b>													
<b>Number of Students</b>	<b>569</b>	<b>504</b>	<b>470</b>	<b>442</b>	<b>497</b>	<b>534</b>							
<i>Percent of Building Occupied</i>	136%	121%	112%	106%	119%	128%	12.6%	38.1%	10.5%	34.1%	4.7%	9.4%	10.3%
Available Seats	-151	-86	-52	-24	-79	-116							
<b>Clarksburg Village Site #2 ES</b>													
<b>Maximum Number of Seats= 741</b>													
<b><u>With Change:</u></b>													
<b>Number of Students</b>	<b>591</b>	<b>712</b>	<b>724</b>	<b>729</b>	<b>730</b>	<b>732</b>							
<i>Percent of Building Occupied</i>	80%	96%	98%	98%	99%	99%	16.4%	46.7%	12.6%	19.3%	5.1%	11.0%	11.8%
Available Seats	150	29	17	12	11	9							
<b>Wilson Wims ES</b>													
<b>Maximum Number of Seats= 752</b>													
<b><u>No Change:</u></b>													
<b>Number of Students</b>	<b>1253</b>	<b>1296</b>	<b>1323</b>	<b>1339</b>	<b>1345</b>	<b>1346</b>							
<i>Percent of Building Occupied</i>	167%	172%	176%	178%	179%	179%	15.1%	43.5%	13.4%	21.5%	6.5%	11.6%	12.4%
Available Seats	-501	-544	-571	-587	-593	-594							
<b><u>With Change:</u></b>													
<b>Number of Students</b>	<b>759</b>	<b>695</b>	<b>709</b>	<b>718</b>	<b>721</b>	<b>722</b>							
<i>Percent of Building Occupied</i>	101%	92%	94%	95%	96%	96%	14.1%	42.0%	12.8%	25.4%	5.7%	10.2%	9.0%
Available Seats	-7	57	43	34	31	30							

In the 2019–2020 school year, the new school would open with Grades K–4 students only. Grade 5 students would be grandfathered at Cedar Grove and Wilson Wims elementary schools. In the 2020–2021 school year, Grade 5 students would articulate to Clarksburg Village Site #2 ES. The enrollment at Clarksburg Village Site #2 ES reflects 30 special education students.

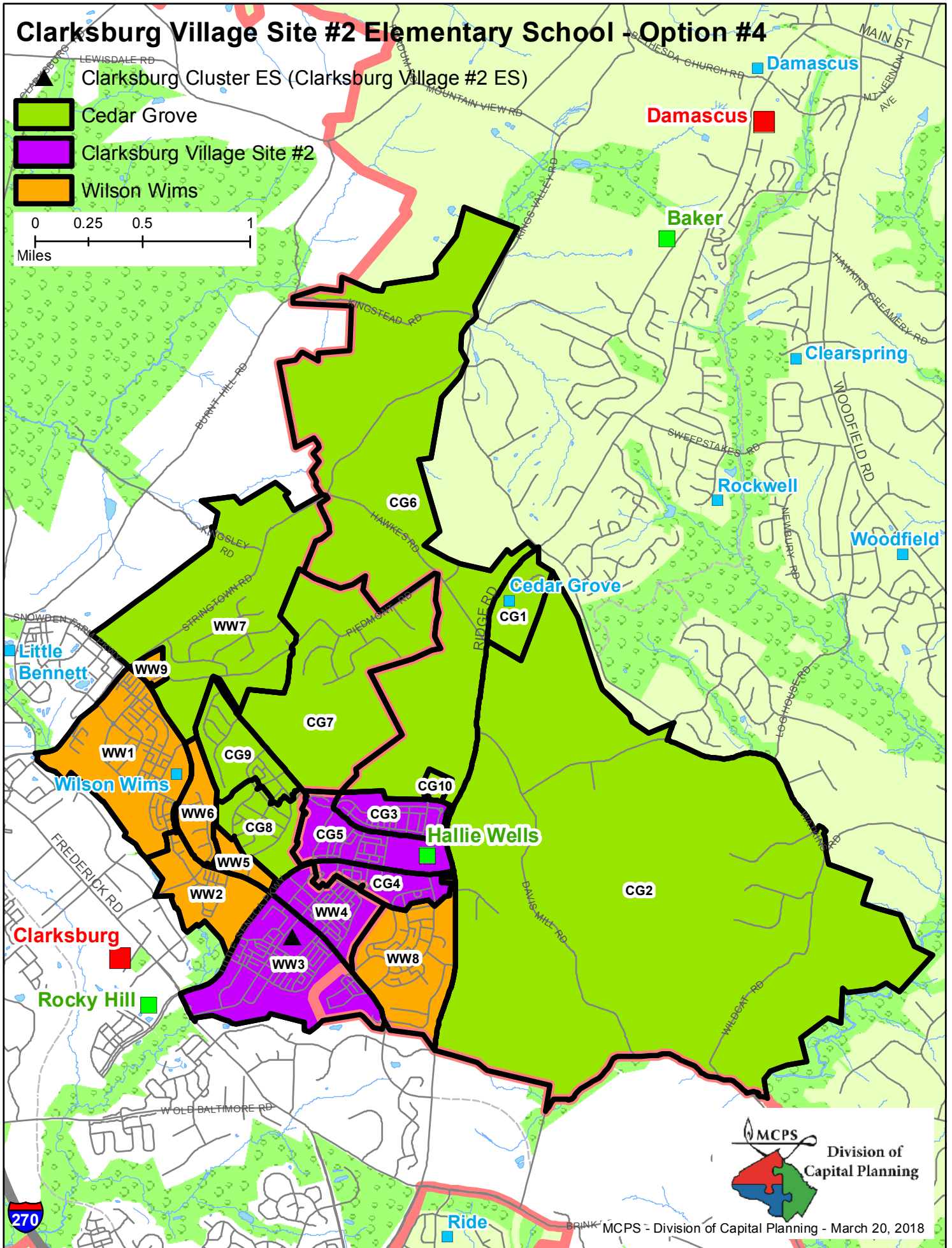
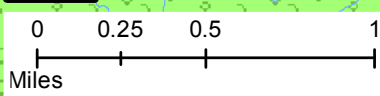
# Clarksburg Village Site #2 Elementary School - Option #4

▲ Clarksburg Cluster ES (Clarksburg Village #2 ES)

■ Cedar Grove

■ Clarksburg Village Site #2

■ Wilson Wims



# Option #4

## Clarksburg Village Site #2 Elementary School

### Boundary Study

October 2018

Reassign Zones CG3, CG4, and CG5 from Cedar Grove ES and WW3 and WW4 from Wilson Wims ES to Clarksburg Village Site #2 ES

Reassign WW7 from Wilson Wims ES to Cedar Grove ES

School	Projected Number of Students						2018–19					2017–18	
							Race/Ethnic Composition						
	2019–20	2020–21	2021–22	2022–23	2023–24	2024–25	% Afr. Amer.	% Asian	% Hispanic	% White	% 2 or More	% FARMS	% ESOL
<b>Cedar Grove ES</b>													
<b>Maximum Number of Seats= 418</b>													
<b><u>No Change:</u></b>													
<b>Number of Students</b>	<b>636</b>	<b>636</b>	<b>633</b>	<b>614</b>	<b>605</b>	<b>611</b>							
<i>Percent of Building Occupied</i>	<i>152%</i>	<i>152%</i>	<i>151%</i>	<i>147%</i>	<i>145%</i>	<i>146%</i>	<i>13.2%</i>	<i>38.7%</i>	<i>10.8%</i>	<i>32.8%</i>	<i>4.6%</i>	<i>9.7%</i>	<i>11.3%</i>
Available Seats	-218	-218	-215	-196	-187	-193							
<b><u>With Change:</u></b>													
<b>Number of Students</b>	<b>443</b>	<b>405</b>	<b>405</b>	<b>396</b>	<b>393</b>	<b>396</b>							
<i>Percent of Building Occupied</i>	<i>106%</i>	<i>97%</i>	<i>97%</i>	<i>95%</i>	<i>94%</i>	<i>95%</i>	<i>13.9%</i>	<i>34.5%</i>	<i>13.9%</i>	<i>33.8%</i>	<i>3.9%</i>	<i>12.8%</i>	<i>8.8%</i>
Available Seats	-25	13	13	22	25	22							
<b>Clarksburg Village Site #2 ES</b>													
<b>Maximum Number of Seats= 741</b>													
<b><u>With Change:</u></b>													
<b>Number of Students</b>	<b>688</b>	<b>823</b>	<b>832</b>	<b>830</b>	<b>826</b>	<b>829</b>							
<i>Percent of Building Occupied</i>	<i>93%</i>	<i>111%</i>	<i>112%</i>	<i>112%</i>	<i>111%</i>	<i>112%</i>	<i>17.9%</i>	<i>47.2%</i>	<i>12.6%</i>	<i>18.3%</i>	<i>3.9%</i>	<i>13.2%</i>	<i>13.8%</i>
Available Seats	53	-82	-91	-89	-85	-88							
<b>Wilson Wims ES</b>													
<b>Maximum Number of Seats= 752</b>													
<b><u>No Change:</u></b>													
<b>Number of Students</b>	<b>1253</b>	<b>1296</b>	<b>1323</b>	<b>1339</b>	<b>1345</b>	<b>1346</b>							
<i>Percent of Building Occupied</i>	<i>167%</i>	<i>172%</i>	<i>176%</i>	<i>178%</i>	<i>179%</i>	<i>179%</i>	<i>15.1%</i>	<i>43.5%</i>	<i>13.4%</i>	<i>21.5%</i>	<i>6.5%</i>	<i>10.7%</i>	<i>10.1%</i>
Available Seats	-501	-544	-571	-587	-593	-594							
<b><u>With Change:</u></b>													
<b>Number of Students</b>	<b>788</b>	<b>733</b>	<b>749</b>	<b>758</b>	<b>761</b>	<b>762</b>							
<i>Percent of Building Occupied</i>	<i>105%</i>	<i>98%</i>	<i>100%</i>	<i>101%</i>	<i>101%</i>	<i>101%</i>	<i>12.5%</i>	<i>44.7%</i>	<i>10.7%</i>	<i>25.1%</i>	<i>7.0%</i>	<i>7.4%</i>	<i>8.5%</i>
Available Seats	-36	19	3	-6	-9	-10							

In the 2019–2020 school year, the new school would open with Grades K–4 students only. Grade 5 students would be grandfathered at Cedar Grove and Wilson Wims elementary schools. In the 2020–2021 school year, Grade 5 students would articulate to Clarksburg Village Site #2 ES. The enrollment at Clarksburg Village Site #2 ES reflects 30 special education students.



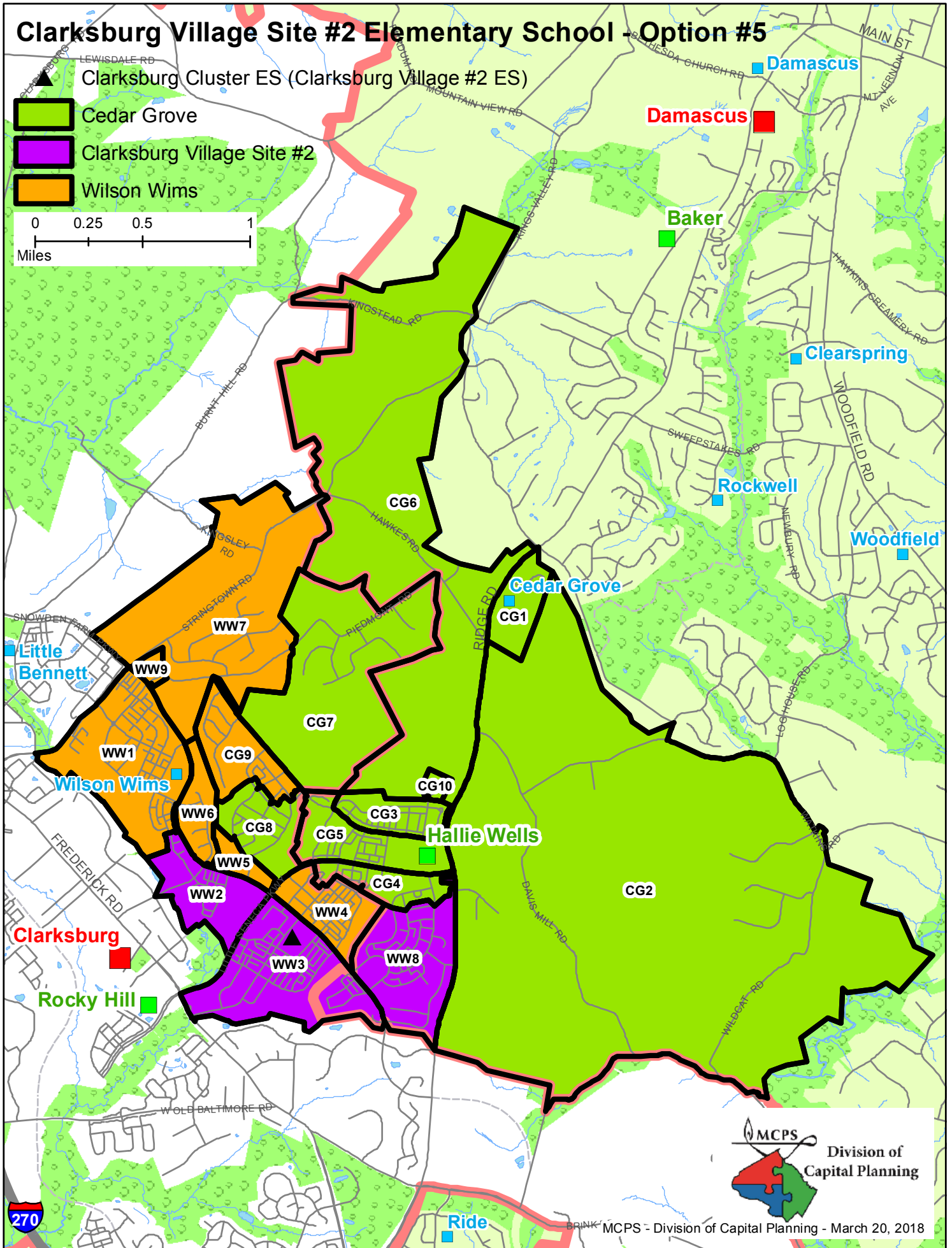
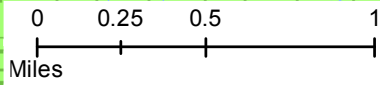
# Clarksburg Village Site #2 Elementary School - Option #5

▲ Clarksburg Cluster ES (Clarksburg Village #2 ES)

■ Cedar Grove

■ Clarksburg Village Site #2

■ Wilson Wims



MCPS - Division of Capital Planning - March 20, 2018

# Option #5

## Clarksburg Village Site #2 Elementary School

### Boundary Study

October 2018

**Reassign Zones WW2, WW3, and WW8 from Wilson Wims ES to Clarksburg Village Site #2 ES**  
**Reassign Zone CG9 from Cedar Grove ES to Wilson Wims ES**

School	Projected Number of Students						2018–19					2017–18	
							Race/Ethnic Composition						
	2019–20	2020–21	2021–22	2022–23	2023–24	2024–25	% Afr. Amer.	% Asian	% Hispanic	% White	% 2 or More	% FARMS	% ESOL
Cedar Grove ES													
Maximum Number of Seats= 418													
<u>No Change:</u>													
Number of Students	636	636	633	614	605	611							
Percent of Building Occupied	152%	152%	151%	147%	145%	146%	13.2%	38.7%	10.8%	32.8%	4.6%	9.7%	11.3%
Available Seats	-218	-218	-215	-196	-187	-193							
<u>With Change:</u>													
Number of Students	532	513	510	495	489	493							
Percent of Building Occupied	127%	123%	122%	118%	117%	118%	15.4%	41.6%	12.6%	26.0%	4.5%	9.6%	12.0%
Available Seats	-114	-95	-92	-77	-71	-75							
Clarksburg Village Site #2 ES													
Maximum Number of Seats= 741													
<u>With Change:</u>													
Number of Students	608	728	743	751	754	755							
Percent of Building Occupied	82%	98%	100%	101%	102%	102%	16.7%	45.3%	12.0%	20.8%	5.2%	11.3%	11.6%
Available Seats	133	13	-2	-10	-13	-14							
Wilson Wims ES													
Maximum Number of Seats= 752													
<u>No Change:</u>													
Number of Students	1253	1296	1323	1339	1345	1346							
Percent of Building Occupied	167%	172%	176%	178%	179%	179%	15.1%	43.5%	13.4%	21.5%	6.5%	10.7%	10.1%
Available Seats	-501	-544	-571	-587	-593	-594							
<u>With Change:</u>													
Number of Students	779	721	733	737	737	740							
Percent of Building Occupied	104%	96%	97%	98%	98%	98%	13.0%	43.5%	12.0%	26.1%	5.4%	10.0%	8.3%
Available Seats	-27	31	19	15	15	12							

In the 2019–2020 school year, the new school would open with Grades K–4 students only. Grade 5 students would be grandfathered at Cedar Grove and Wilson Wims elementary schools. In the 2020–2021 school year, Grade 5 students would articulate to Clarksburg Village Site #2 ES. The enrollment at Clarksburg Village Site #2 ES reflects 30 special education students.

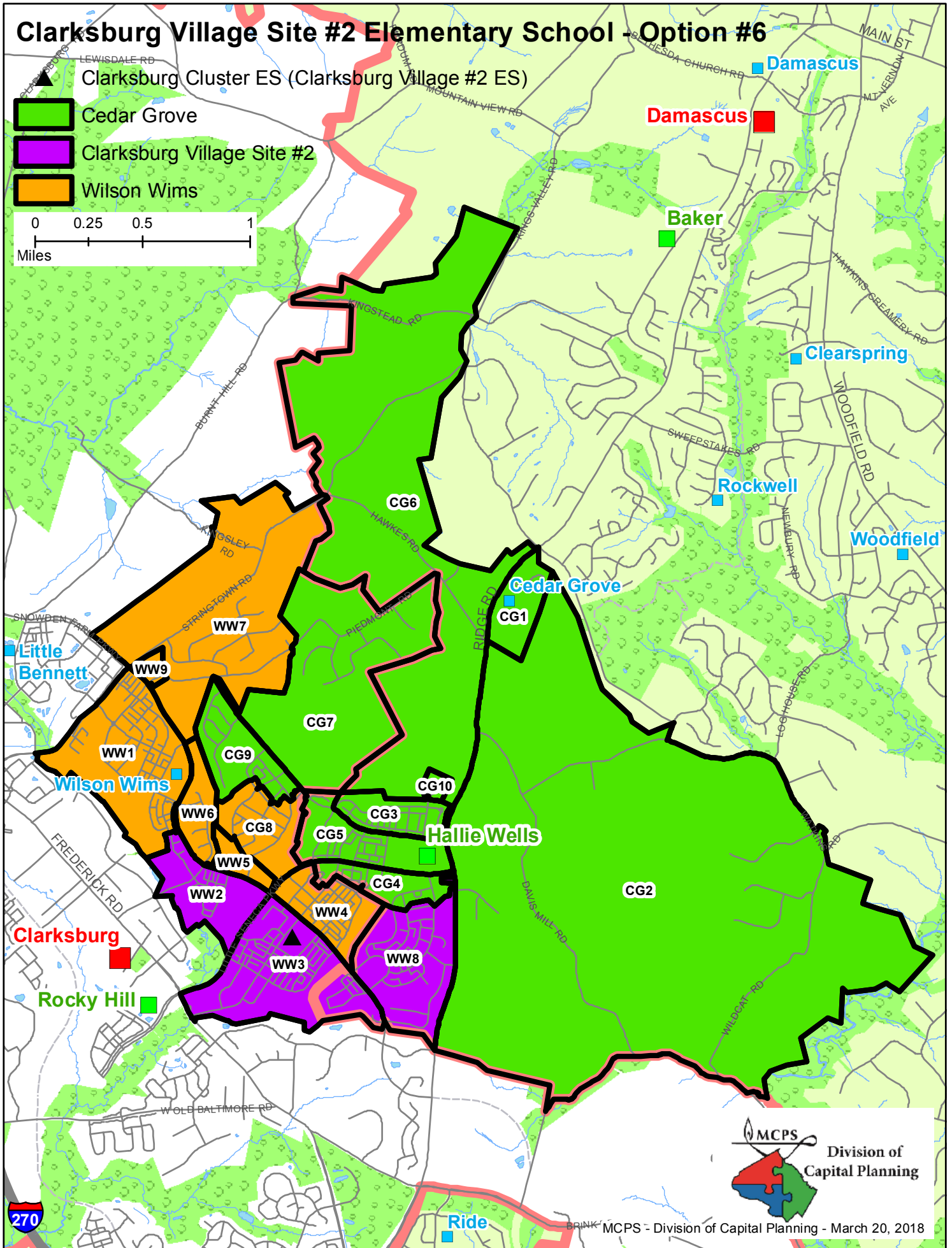
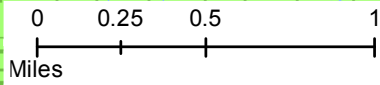
# Clarksburg Village Site #2 Elementary School - Option #6

▲ Clarksburg Cluster ES (Clarksburg Village #2 ES)

■ Cedar Grove

■ Clarksburg Village Site #2

■ Wilson Wims



# Option #6

## Clarksburg Village Site #2 Elementary School

### Boundary Study

October 2018

Reassign Zones WW2, WW3, and WW8 from Wilson Wims ES to Clarksburg Village Site #2 ES  
 Reassign Zone CG8 from Cedar Grove ES to Wilson Wims ES

School	Projected Number of Students						2018–19					2017–18	
							Race/Ethnic Composition						
	2019–20	2020–21	2021–22	2022–23	2023–24	2024–25	% Afr. Amer.	% Asian	% Hispanic	% White	% 2 or More	% FARMS	% ESOL
<b>Cedar Grove ES</b>													
<b>Maximum Number of Seats= 418</b>													
<b><u>No Change:</u></b>													
<b>Number of Students</b>	<b>636</b>	<b>636</b>	<b>633</b>	<b>614</b>	<b>605</b>	<b>611</b>							
<i>Percent of Building Occupied</i>	152%	152%	151%	147%	145%	146%	13.2%	38.7%	10.8%	32.8%	4.6%	9.7%	11.3%
Available Seats	-218	-218	-215	-196	-187	-193							
<b><u>With Change:</u></b>													
<b>Number of Students</b>	<b>547</b>	<b>532</b>	<b>530</b>	<b>514</b>	<b>507</b>	<b>512</b>							
<i>Percent of Building Occupied</i>	131%	127%	127%	123%	121%	123%	13.7%	41.7%	11.2%	29.5%	3.9%	8.6%	12.2%
Available Seats	-129	-114	-112	-96	-89	-94							
<b>Clarksburg Village Site #2 ES</b>													
<b>Maximum Number of Seats= 741</b>													
<b><u>With Change:</u></b>													
<b>Number of Students</b>	<b>608</b>	<b>728</b>	<b>743</b>	<b>751</b>	<b>754</b>	<b>755</b>							
<i>Percent of Building Occupied</i>	82%	98%	100%	101%	102%	102%	16.7%	45.3%	12.0%	20.8%	5.2%	11.3%	11.6%
Available Seats	133	13	-2	-10	-13	-14							
<b>Wilson Wims ES</b>													
<b>Maximum Number of Seats= 752</b>													
<b><u>No Change:</u></b>													
<b>Number of Students</b>	<b>1253</b>	<b>1296</b>	<b>1323</b>	<b>1339</b>	<b>1345</b>	<b>1346</b>							
<i>Percent of Building Occupied</i>	167%	172%	176%	178%	179%	179%	15.1%	43.5%	13.4%	21.5%	6.5%	10.7%	10.1%
Available Seats	-501	-544	-571	-587	-593	-594							
<b><u>With Change:</u></b>													
<b>Number of Students</b>	<b>764</b>	<b>702</b>	<b>714</b>	<b>718</b>	<b>719</b>	720							
<i>Percent of Building Occupied</i>	102%	93%	95%	95%	96%	96%	14.3%	43.5%	13.1%	23.4%	5.8%	10.9%	8.1%
Available Seats	-12	50	38	34	33	32							

In the 2019–2020 school year, the new school would open with Grades K–4 students only. Grade 5 students would be grandfathered at Cedar Grove and Wilson Wims elementary schools. In the 2020–2021 school year, Grade 5 students would articulate to Clarksburg Village Site #2 ES. The enrollment at Clarksburg Village Site #2 ES reflects 30 special education students.