

WALTER JOHNSON CLUSTER

CLUSTER PLANNING ISSUES

The Walter Johnson Cluster has experienced considerable enrollment growth in the past eight years, primarily driven by the turnover of homes to younger families. New development in the cluster also has played a role, although by a significantly smaller amount than demographic changes in existing communities. The White Flint Sector Plan, adopted in 2010, provides for up to 9,800 new multi-family residential units over the next 20–30 years. A future elementary school site is approved in the plan. The plan requires the redevelopment of existing land uses and is phased with major transit and infrastructure improvements.

The cluster also will see substantial amounts of new housing associated with the following recently approved land-use plans: Rock Spring Master Plan, White Flint 2 Sector Plan, and Grosvenor-Strathmore Metro Area Minor Master Plan. Currently, there are approximately 11,340 units in the development pipeline approved, but unbuilt, within the Walter Johnson Cluster. Of the 11,340 units, approximately 10,900 are multifamily and 440 are single family units. Additional information on the various land-use plans can be found at the following weblinks:

Rock Spring Master Plan—<https://montgomeryplanning.org/planning/communities/midcounty/rock-spring/>

White Flint 2 Sector Plan—<https://montgomeryplanning.org/planning/communities/midcounty/white-flint/white-flint-2-sector-plan/>

Grosvenor-Strathmore Metro Area Minor Master Plan—<https://montgomeryplanning.org/planning/communities/midcounty/grosvenor-strathmore-minor-master-plan-amendment/>

Planning Study: A Site Selection Committee was held in spring 2018, to identify possible sites for a new elementary school in the Walter Johnson Cluster. The projected space deficits at the elementary school level in the cluster was not sufficient to recommend a new elementary school for the Walter Johnson Cluster at that time. In November 2018, the Board of Education adopted a capacity study for the elementary schools in the Bethesda-Chevy Chase Cluster. Given the space deficits in the Walter Johnson Cluster, in November 2018, the Board of Education expanded the capacity study to explore possible solutions that would include the elementary schools in both the Walter Johnson and Bethesda-Chevy Chase clusters. The Board of Education also included a joint site selection process for the two clusters conducted in summer 2019. The adopted FY2023–2028 CIP included planning funds in the out-years for this new elementary school with a TBD completion date. An FY 2025 appropriation was requested, however, due to fiscal constraints, the County Council shifted planning expenditures to the out-years of the adopted FY2025–2030 CIP. Once planning is complete, construction funds, along with a completion date, will be considered in a future CIP.

Planning Issue: On March 28, 2023, the Board of Education approved the boundary study scope to create the service area for the reopening of Charles W. Woodward High School. The scope of the boundary study includes the following high schools: Bethesda Chevy-Chase, Montgomery Blair, Albert Einstein, Walter Johnson, John F. Kennedy, Northwood, Wheaton, and Walt Whitman. The scope also includes the following middle schools: Argyle, Eastern, A. Mario Loiederman, Newport Mill, North Bethesda, Parkland, Thomas W. Pyle, Odessa Shannon, Silver Creek, Silver Spring International, Sligo, Takoma Park, Tilden, and Westland. No elementary schools are included in the boundary study.

As part of the adopted FY 2025–2030 CIP, the completion date for the Northwood High School project was delayed one-year due to an extension of the construction timeline. As a result of Northwood High School remaining at Charles W. Woodward High School, its holding facility, for one additional year, the completion date for the reopening of Charles W. Woodward High School is August 2027. On March 19, 2024, the Board of Education adopted a revised timeline for the boundary study. Information regarding this boundary study is available on the MCPS website at the following link <https://www.montgomeryschoolsmd.org/departments/planning/woodwardhsboundarystudy/>

SCHOOLS

Walter Johnson High School

Planning Issue: See text under Cluster Planning Issues.

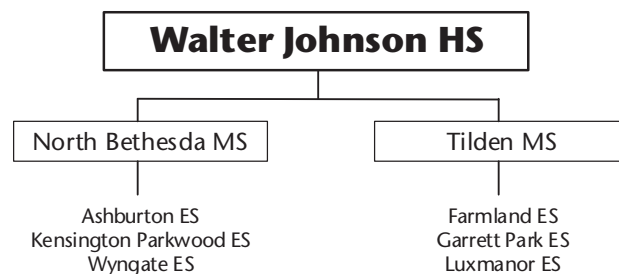
Charles W. Woodward High School

Planning Issue: See text under Cluster Planning Issues.

Capital Project: To address the urgent space needs at Walter Johnson High School and the Downcounty Consortium high schools, an FY 2021 appropriation for construction was approved for the reopening of Charles W. Woodward High School. The Board of Education approved that Charles W.

Walter Johnson Cluster Articulation

2023–2024 School Year



See Appendix U for multicolored maps of the service areas.

WALTER JOHNSON CLUSTER

Woodward High School be used as a holding school, starting in August 2023, for Northwood High School. An FY 2023 appropriation was requested for construction cost increases and the balance of construction funds. However, due to fiscal constraints, the County Council, in the adopted FY2023–2028 CIP, delayed this project one year. The additional expenditures were approved, but the scheduled completion date for the reopening of Charles W. Woodward High School was August 2026. An FY 2024 appropriation was approved for construction cost increases. As part of the Board of Education’s adopted FY2025–2030 CIP, the construction schedule for the Northwood High School project was extended one year, with a completion date of August 2027. Since Charles W. Woodward High School is the holding facility for Northwood High School, the completion date for the reopening of Charles W. Woodward High School is August 2027. Due to the continued effects of Covid-19 pandemic on construction cost increases, the budget for this project was insufficient to complete the construction scope as originally intended. Therefore, to move forward with the construction and remain on schedule, the Board of Education approved, as part of the FY2025–2030 CIP, a Phase III for this project that will include the construction of the auditorium. Funding to construct the auditorium will be considered in the next CIP budget cycle.

North Bethesda Middle School

Planning Issue: See text under Cluster Planning Issues.

Tilden Middle School

Planning Issue: See text under Cluster Planning Issues.

Ashburton Elementary School

Planning Issue: See text under Cluster Planning Study.

Bethesda-Chevy Chase/Walter Johnson Clusters Elementary School

Planning Study: See text under Cluster Planning Study.

Capital Project: Projections indicate that enrollment will exceed capacity for some of the elementary schools in these two clusters. An FY 2025 appropriation was requested, however, due to fiscal constraints, the County Council shifted planning expenditures to the out-years of the adopted FY2025–2030 CIP. Once planning is complete, construction funds, along with a completion date, will be considered in a future CIP.

Farmland Elementary School

Planning Issue: See text under Cluster Planning Study.

Garrett Park Elementary School

Planning Issue: See text under Cluster Planning Study.

Kensington-Parkwood Elementary School

Planning Issue: See text under Cluster Planning Study.

Luxmanor Elementary School

Planning Issue: See text under Cluster Planning Study.

Wyngate Elementary School

Planning Issue: See text under Cluster Planning Study.

CAPITAL PROJECTS

School	Project	Project Status*	Date of Completion
Charles W. Woodward HS	New School	Delayed	August 2024/2027
Bethesda-Chevy Chase/Walter Johnson Clusters ES	New	Programmed	TBD

Approved—Project has an approved FY 2025 appropriation in the FY 2025–2030 CIP for planning or construction funds.

Programmed—Project has expenditures programmed in a future year of the CIP for planning and/or construction funds.

Proposed—Project has facility planning funds approved for a feasibility study.

WALTER JOHNSON CLUSTER

Projected Enrollment and Space Availability Effects of the Adopted FY 2025–2030 CIP and Non-Capital Actions

Schools			Actual	Projections							
			23-24	24-25	25-26	26-27	27-28	28-29	29-30	2033	2038
Walter Johnson HS	Program Capacity		2299	2299	2299	2299	2299	2299	2299	2299	2299
	Enrollment		2984	3004	3020	2975	2950	2969	2991	3150	3150
	Available Space		(685)	(705)	(721)	(676)	(651)	(670)	(692)	(851)	(851)
	Comments	See Text									
Charles W. Woodward HS	Program Capacity						2249	2249	2249	2249	2249
	Enrollment						0	0	0	0	0
	Available Space						2249	2249	2249	2249	2249
	Comments	See Text					Opens				
North Bethesda MS	Program Capacity		1203	1203	1203	1203	1203	1203	1203	1203	1203
	Enrollment		1163	1173	1162	1166	1188	1197	1204	1130	1130
	Available Space		40	30	41	37	15	6	(1)	73	73
	Comments	See Text									
Tilden MS	Program Capacity		1264	1264	1264	1264	1264	1264	1264	1264	1264
	Enrollment		1087	1070	1061	1079	1098	1106	1112	1120	1120
	Available Space		177	194	203	185	166	158	152	144	144
	Comments	See Text									
Ashburton ES	Program Capacity		822	822	822	822	822	822	822		
	Enrollment		821	867	899	900	880	853	862		
	Available Space		1	(45)	(77)	(78)	(58)	(31)	(40)		
	Comments										
Farmland ES	Program Capacity		724	724	724	724	724	724	724		
	Enrollment		813	808	798	824	815	792	797		
	Available Space		(89)	(84)	(74)	(100)	(91)	(68)	(73)		
	Comments										
Garrett Park ES	Program Capacity		777	777	777	777	777	777	777		
	Enrollment		685	749	718	713	711	704	705		
	Available Space		92	28	59	64	66	73	72		
	Comments										
Kensington–Parkwood ES	Program Capacity		819	819	819	819	819	819	819		
	Enrollment		560	542	538	539	530	538	546		
	Available Space		259	277	281	280	289	281	273		
	Comments										
Luxmanor ES	Program Capacity		746	746	746	746	746	746	746		
	Enrollment		720	749	748	766	780	769	758		
	Available Space		26	(3)	(2)	(20)	(34)	(23)	(12)		
	Comments										
Wyngate ES	Program Capacity		801	801	801	801	801	801	801		
	Enrollment		679	637	629	631	621	615	616		
	Available Space		122	164	172	170	180	186	185		
	Comments										
Cluster Information	HS Utilization		130%	131%	131%	129%	128%	129%	130%	137%	137%
	HS Enrollment		2984	3004	3020	2975	2950	2969	2991	3150	3150
	MS Utilization		91%	91%	90%	91%	93%	93%	94%	91%	91%
	MS Enrollment		2250	2243	2223	2245	2286	2303	2316	2250	2250
	ES Utilization		91%	93%	92%	93%	92%	91%	91%		
	ES Enrollment		4278	4352	4330	4373	4337	4271	4284		

WALTER JOHNSON CLUSTER

Facility Characteristics of Schools 2023–2024

Schools	Year Facility Opened	Year Reopened/ Revitalized/ Maj. Cap. Proj.	Total Square Footage	Site Size Acres	Adjacent Park	Relocatable Classrooms*	County Programs
Walter Johnson HS	1956	2009	365,138	30.86		15	
North Bethesda MS	1955	1999	178,252	19.11			
Tilden MS	1967	2020	244,561	19.67			
Ashburton ES	1957	1993	91,178	8.3		8	
Farmland ES	1963	2011	89,988	4.75	Yes	4	
Garrett Park ES	1948	2012	96,348	4.38	Yes		
Kensington-Parkwood ES	1952	2006	102,382	9.86			
Luxmanor ES	1966	2020	99,376	6.49	Yes		
Wyngate ES	1952	1997	89,104	9.5			

*See Appendix H for relocatable use.

**Tilden MS is colocated with Rock Terrace School