

# WALTER JOHNSON CLUSTER

## CLUSTER PLANNING ISSUES

**Planning Issue:** The Walter Johnson Cluster has experienced large enrollment increases in the past eight years, primarily driven by the turnover of homes to younger families. New development in the cluster also has played a role, although by a significantly smaller amount than demographic changes in existing communities. The 2010 adopted White Flint Sector Plan provides for up to 9,800 new multi-family residential units over the next 20 to 30 years. A future elementary school site is approved in the Plan. The Plan requires the redevelopment of existing land uses and is phased with major transit and infrastructure improvements. The cluster also will see substantial amounts of new housing associated with the following recently approved land-use plans: Rock Spring Master Plan, White Flint 2 Sector Plan, and Grosvenor-Strathmore Metro Area Minor Master Plan.

**Planning Study:** A Site Selection Committee was held in spring 2018, to identify possible sites for a new elementary school in the Walter Johnson Cluster. The projected space deficits at the elementary school level in the cluster was not sufficient to recommend a new elementary school for the Walter Johnson Cluster at that time. In November 2018, the Board of Education adopted a capacity study for the elementary schools in the Bethesda-Chevy Chase Cluster. Given the space deficits in the Walter Johnson Cluster, in November 2018, the Board of Education expanded the capacity study to explore possible solutions that would include the elementary schools in both the Walter Johnson and Bethesda-Chevy Chase clusters. The Board of Education also included a joint site selection process for the two clusters conducted in summer 2019.

was completed that evaluated a) the possibility of doing a phased construction of Northwood High School, with students on site and b) an approach where a newly constructed and reopened Charles W. Woodward High School be used as a holding school, starting in August 2023, for Northwood High School for two years. The evaluation compared the costs for each option, impact to students, impact on the building design, and the timeline of the project. Based on this analysis, the Board of Education approved that Charles W. Woodward High School be used as a holding school, starting in August 2023, for Northwood High School, for two years. Northwood High School will return to its facility in August 2025, and Charles W. Woodward High School will open in August 2025. An FY 2022 appropriation was approved to continue construction to reopen Charles W. Woodward High School. An FY 2023 appropriation is recommended for construction cost increases and the balance of construction funds. The reopening of the high school is scheduled to be completed August 2025.

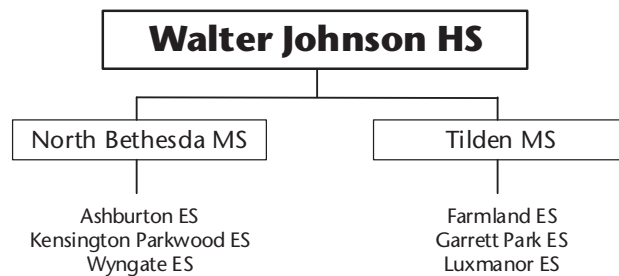
## SCHOOLS

### Walter Johnson High School

**Capital Project:** Projections indicate enrollment at Walter Johnson High School will exceed capacity by the end of the six-year planning period. An FY 2015 appropriation was completed for facility planning to determine the feasibility, scope, and cost for a classroom addition.

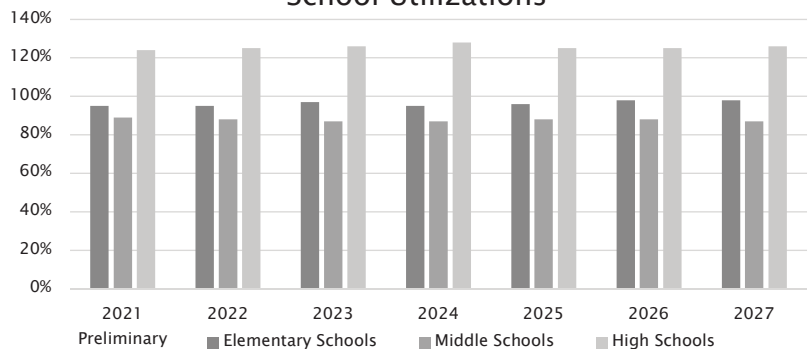
**Capital Project:** To address the urgent space needs at Walter Johnson High School and the Downcounty Consortium high schools, an FY 2019 appropriation was approved for planning funds to reopen Charles W. Woodward High School. The scheduled completion date for this project is August 2023, for the first phase and August 2025, for the new high school. Northwood High School also will be utilized to address the space needs in the Downcounty Consortium. With respect to Northwood High School, an analysis

### Walter Johnson Cluster Articulation



See Appendix U for multicolored maps of the service areas.

### Walter Johnson Cluster School Utilizations



Note: Percent utilization calculated as total enrollment of schools divided by total capacity. Projected capacity factors in capital projects. Desired utilization range is between 80% - 100%

## WALTER JOHNSON CLUSTER

### Charles W. Woodward High School

**Capital Project:** To address the urgent space needs at Walter Johnson High School and the Downcounty Consortium high schools, an FY 2021 appropriation for construction was approved to reopen the school. The Board of Education approved that Charles W. Woodward High School be used as a holding school, starting in August 2023. Northwood High School will return to its facility in August 2025. An FY 2023 appropriation is recommended for construction cost increases and the balance of construction funds. The scheduled completion date for the reopening of Charles W. Woodward High School is August 2025.

### Ashburton Elementary School

**Planning Issue:** See text under Cluster Planning Issues.

### Bethesda-Chevy Chase/Walter Johnson Clusters Elementary School

**Planning Study:** See text under Cluster Planning Issues.

**Capital Project:** Projections indicate enrollment will exceed capacity for some of the elementary schools in these two clusters. Planning funds for a new elementary school are approved in the out-years of the CIP. A completion date for this new elementary school will be considered in a future CIP.

### Farmland Elementary School

**Planning Issue:** See text under Cluster Planning Issues.

### Garrett Park Elementary School

**Planning Issue:** See text under Cluster Planning Issues.

### Kensington-Parkwood Elementary School

**Planning Issue:** See text under Cluster Planning Issues.

### Luxmanor Elementary School

**Planning Issue:** See text under Cluster Planning Issues.

### Wyngate Elementary School

**Planning Issue:** See text under Cluster Planning Issues.

## CAPITAL PROJECTS

School	Project	Project Status*	Date of Completion
Charles W. Woodward HS	New School	Recommended	August 2023/2025
Bethesda-Chevy Chase/Walter Johnson Clusters ES	New	Programmed	TBD

\*Approved—Project has an approved FY 2022 appropriation in the Amended FY 2021–2026 CIP for planning or construction funds.

\*Programmed—Project has expenditures programmed in a future year of the CIP for planning and/or construction funds.

\*Proposed—Project has facility planning funds approved for a feasibility study.

\*Recommended—Project has a recommended FY 2023 appropriation for planning or construction in the FY 2023–2028 CIP.

# WALTER JOHNSON CLUSTER

## Projected Enrollment and Space Availability

Effects of the Superintendent's Recommended FY 2023 Capital Budget and FY 2023–2028 Capital Improvements Program

Schools		Prelim.	Projections								
		21–22	22–23	23–24	24–25	25–26	26–27	27–28	2031	2036	
Walter Johnson HS	Program Capacity	2321	2321	2321	2321	2321	2321	2321	2321	2321	2321
	Enrollment	2882	2907	2919	2963	2893	2898	2923	2950	3000	
	Available Space	(561)	(586)	(598)	(642)	(572)	(577)	(602)	(629)	(679)	
	Comments										
Charles W. Woodward HS	Program Capacity					2159	2159	2159	2159	2159	
	Enrollment					0	0	0	0	0	
	Available Space					2159	2159	2159	2159	2159	
	Comments					Opens					
North Bethesda MS	Program Capacity	1233	1233	1233	1233	1233	1233	1233	1233	1233	
	Enrollment	1154	1121	1120	1170	1180	1176	1170	1200	1250	
	Available Space	79	112	113	63	53	57	63	33	(17)	
	Comments										
Tilden MS	Program Capacity	1216	1216	1216	1216	1216	1216	1216	1216	1216	
	Enrollment	1023	1029	1001	968	976	973	968	975	1025	
	Available Space	193	187	215	248	240	243	248	241	191	
	Comments										
Ashburton ES	Program Capacity	789	789	789	789	789	789	789	789	789	
	Enrollment	839	835	860	852	950	968	965			
	Available Space	(50)	(46)	(71)	(63)	(161)	(179)	(176)			
	Comments										
Farmland ES	Program Capacity	714	714	714	714	714	714	714	714	714	
	Enrollment	802	800	797	785	768	792	783			
	Available Space	(88)	(86)	(83)	(71)	(54)	(78)	(69)			
	Comments										
Garrett Park ES	Program Capacity	777	777	777	777	777	777	777	777	777	
	Enrollment	674	667	727	723	716	722	729			
	Available Space	103	110	50	54	61	55	48			
	Comments										
Kensington–Parkwood ES	Program Capacity	706	706	706	706	706	706	706	706	706	
	Enrollment	598	600	595	572	563	579	571			
	Available Space	108	106	111	134	143	127	135			
	Comments										
Luxmanor ES	Program Capacity	764	764	764	764	764	764	764	764	764	
	Enrollment	674	683	698	703	683	695	696			
	Available Space	90	81	66	61	81	69	68			
	Comments										
Wyngate ES	Program Capacity	777	777	777	777	777	777	777	777	777	
	Enrollment	700	707	705	668	666	676	692			
	Available Space	77	70	72	109	111	101	85			
	Comments										
Cluster Information	HS Utilization	124%	125%	126%	128%	125%	125%	126%	127%	129%	
	HS Enrollment	2882	2907	2919	2963	2893	2898	2923	2950	3000	
	MS Utilization	89%	88%	87%	87%	88%	88%	87%	89%	93%	
	MS Enrollment	2177	2150	2121	2138	2156	2149	2138	2175	2275	
	ES Utilization	95%	95%	97%	95%	96%	98%	98%			
	ES Enrollment	4287	4292	4382	4303	4346	4432	4436			

# WALTER JOHNSON CLUSTER

## Demographic Characteristics of Schools

Schools	2021-2022						2020-2021		
	Total Enrollment	Two or more races %	Black or Afr. Amer. %	Asian%	Hispanic %	White %	FARMS%*	ESOL%**	Mobility Rate%***
Walter Johnson HS	2882	6.3%	12.3%	13.0%	17.9%	50.1%	10.5%	8.2%	6.4%
North Bethesda MS	1154	8.4%	10.8%	12.2%	14.2%	53.9%	9.7%	7.8%	6.4%
Tilden MS	1023	6.2%	14.8%	16.3%	22.3%	40.0%	16.8%	19.3%	8.8%
Ashburton ES	839	9.4%	16.2%	18.2%	18.0%	37.8%	12.7%	21.7%	16.0%
Farmland ES	802	4.4%	10.6%	29.3%	11.7%	44.0%	9.3%	30.6%	25.5%
Garrett Park ES	674	9.1%	12.8%	14.7%	23.7%	39.3%	20.0%	28.0%	13.3%
Kensington-Parkwood ES	598	8.4%	8.9%	10.4%	16.6%	55.7%	11.1%	10.9%	13.0%
Luxmanor ES	674	8.5%	14.4%	23.3%	22.8%	30.9%	22.0%	37.8%	18.7%
Wyngate ES	700	10.9%	4.1%	14.9%	14.0%	56.1%	2.5%	10.8%	10.6%
<b>Elementary Cluster Total</b>	<b>4287</b>	<b>8.4%</b>	<b>11.3%</b>	<b>18.9%</b>	<b>17.6%</b>	<b>43.6%</b>	<b>12.9%</b>	<b>23.6%</b>	<b>16.4%</b>
<b>Elementary County Total</b>	<b>71278</b>	<b>5.3%</b>	<b>21.8%</b>	<b>13.6%</b>	<b>34.8%</b>	<b>24.0%</b>	<b>40.3%</b>	<b>29.1%</b>	<b>13.4%</b>

\*Percent of students approved for Free and Reduced-priced Meals Program (FARMS) during the 2020–2021 school year.

\*\*Percent of English for Speakers of Other Languages (ESOL) during the 2020–2021 school year. High School students are served in regional ESOL centers.

\*\*\*Mobility Rate is the number of entries plus withdrawals during the 2020–2021 school year compared to average daily membership.

Notes: Native Hawaiian/Pacific Islander and American Indian/Alaskan Native categories total less than 1% and were therefore excluded from the table.

Due to federal and state guidelines, demographic characteristics of schools of less than or equal to 5 students per category are reported as 0%.

**Program Capacity Table**  
(School Year 2021–2022)

Schools	Special Education Services																																						
	Grades Served	Capacity (HS @90% MS@85%)	Total Rooms	Support Rooms	Regular Secondary @25	Regular Elementary @23	CSR Grades 1–2 @18	Pre-K @20	Pre-K @40	HS @20	CSR KIND @18	KIND @22	ESOL @15	METS @15	School Based	Cluster Based	Quad Cluster Based	County & Regional Based																					
															HSM @13	ELEM LAD @13	ELC @10	LANG @12	LFI @10	SCB @6	AAC@7	AUT @6	BRIDGE @10	DHOH @7	SESES @10	EXTENSIONS @6	GT/LD @13	PD @7	PEP@6	PEP @12	PEP @18	VISION (Elementary) @7	OTHER						
Walter Johnson HS	9-12	2321	107		100								2				3		1					1															
North Bethesda MS	6-8	1233	59		57																			2															
Tilden MS	6-8	1216	63		54								2																										
Ashburton ES	K-5	789	39	4		28							6		1																								
Farmland ES	K-5	714	37	4		24							6				3																						
Garrett Park ES	K-5	777	37	3		29							5																										
Kensington-Parkwood ES	K-5	706	41	5		24							5		2											3													2
Luxmanor ES	K-5	764	39	3		26							4				2																			1	3		
Wyngate ES	K-5	777	38	4		29							5																										

## WALTER JOHNSON CLUSTER

### Facility Characteristics of Schools 2021–2022

Schools	Year Facility Opened	Year Reopened/ Revitalized	Total Square Footage	Site Size Acres	Adjacent Park	Relocatable Classrooms	County Programs
Walter Johnson HS	1956	2009	365,138	30.9		10	
North Bethesda MS	1955	1999	178,252	19.99			
Tilden MS	1967	2020	168,804	19.75			
Ashburton ES	1957	1993	91,178	8.3		8	
Farmland ES	1963	2011	89,988	4.8	Yes	4	
Garrett Park ES	1948	2012	96,348	4.4	Yes		
Kensington-Parkwood ES	1952	2006	102,382	9.9			
Luxmanor ES	1966	2020	99,376	6.5	Yes		
Wyngate ES	1952	1997	89,104	9.5			



**Tilden Middle School**