

Shady Grove Sector Plan Boundary Study Option 2

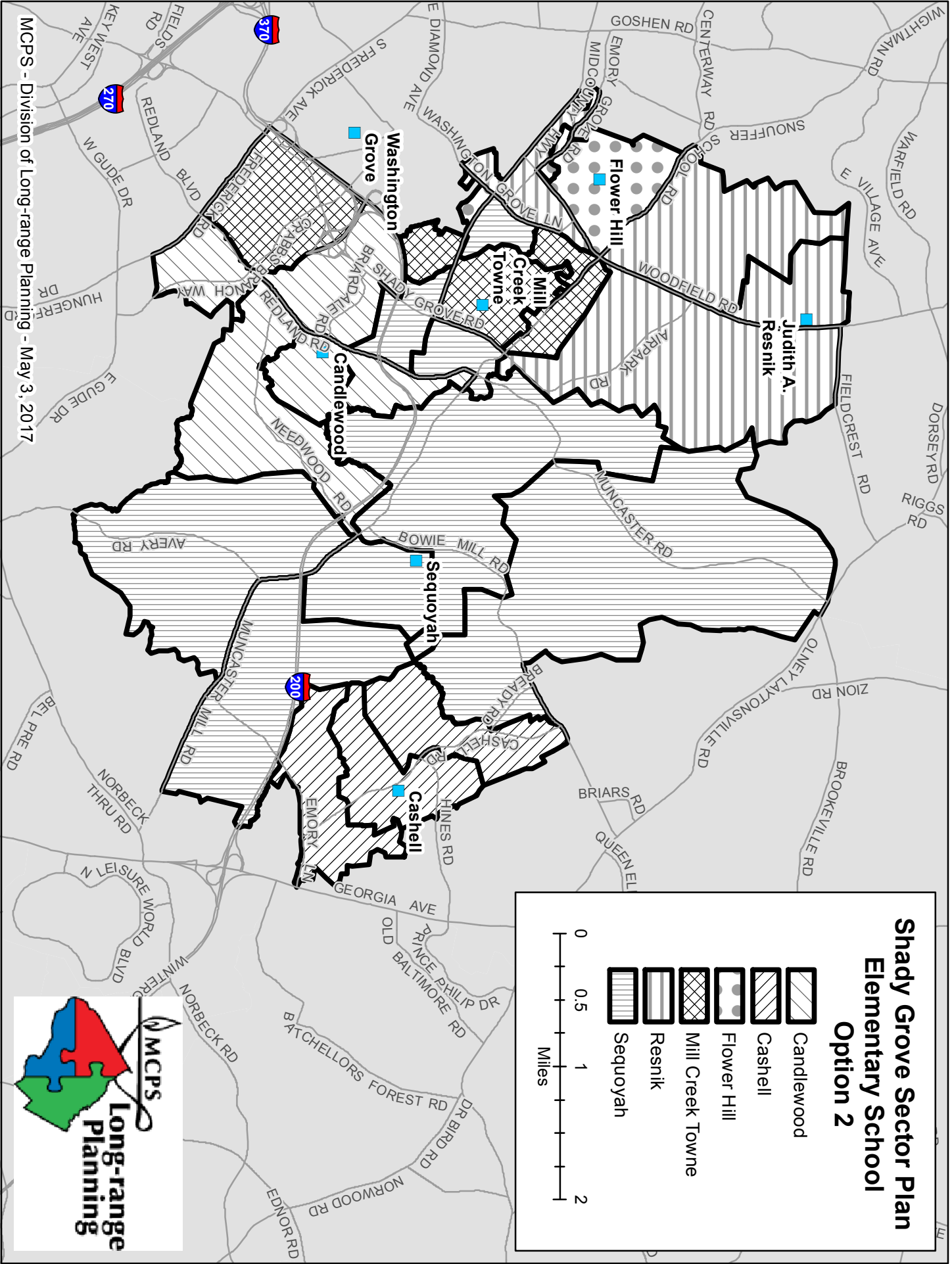
5/1/2017

	Projected Number of Students						2016-2017 Race/Ethnic Composition						
	Boundary Implemented						% Afr. Amer.	% Asian	% Hispanic	% White	% 2 or More	% FARMS	% ESOL
	2017-2018	2018-2019	2019-2020	2020-2021	2021-2022	2022-2023							
Magruder High School													
Maximum Number of Seats = 1941													
<u>No Change:</u>													
Number of Students	1,584	1,604	1,707	1,711	1,775	1,872							
Percent of Building Occupied	82%	83%	88%	88%	91%	96%	18.7%	13.3%	38.5%	27.5%	<5%	33.6%	8.6%
Available Seats	357	337	234	230	166	69							
Receive zone WashingtonGrove1 from Gaithersburg HS.													
<u>With Change:</u>													
Number of Students	1,584	1,640	1,761	1,783	1,866	1,981							
Percent of Building Occupied	82%	85%	91%	92%	96%	102%	18.7%	13.3%	38.4%	27.5%	<5%	33.9%	8.8%
Available Seats	357	301	180	158	75	(40)							
Redland Middle School													
Maximum Number of Seats= 757													
<u>No Change:</u>													
Number of Students	571	623	678	682	704	651							
Percent of Building Occupied	75%	82%	90%	90%	93%	86%	18.0%	15.0%	35.9%	29.1%	<5%	37.2%	10.7%
Available Seats	186	134	79	75	53	106							
Receive zones MillCreekTowne4 and MillCreekTowne5 from Shady Grove MS													
<u>With Change:</u>													
Number of Students	571	676	733	736	759	705							
Percent of Building Occupied	75%	89%	97%	97%	100%	93%	17.7%	15.0%	35.4%	29.6%	<5%	38.3%	11.0%
Available Seats	186	81	24	21	(2)	52							
Shady Grove Middle School													
Maximum Number of Seats= 846													
<u>No Change:</u>													
Number of Students	629	659	623	659	640	632							
Percent of Building Occupied	74%	78%	74%	78%	76%	75%	19.9%	12.1%	40.2%	22.1%	5.6%	40.3%	8.6%
Available Seats	217	187	223	187	206	214							
Receive zone WashingtonGrove1 from Forest Oak MS.													
<u>With Change:</u>													
Number of Students	629	628	602	650	630	634							
Percent of Building Occupied	74%	74%	71%	77%	74%	75%	20.4%	12.3%	40.8%	21.1%	5.5%	38.2%	8.3%
Available Seats	217	218	244	196	216	212							
Candlewood Elementary School													
Maximum Number of Seats= 499													
<u>No Change:</u>													
Number of Students	353	349	356	356	350	360							
Percent of Building Occupied	71%	70%	71%	71%	70%	72%	14.3%	19.9%	20.9%	42.8%	<5%	22.8%	14.5%
Available Seats	146	150	143	143	149	139							
No Boundary Change													
<u>No Change:</u>													
Number of Students	353	349	356	356	350	360							
Percent of Building Occupied	71%	70%	71%	71%	70%	72%	14.3%	19.9%	20.9%	42.8%	<5%	22.8%	14.5%
Available Seats	146	150	143	143	149	139							
Cashell Elementary School													
Maximum Number of Seats= 341													
<u>No Change:</u>													
Number of Students	378	395	389	394	389	392							
Percent of Building Occupied	111%	116%	114%	116%	114%	115%	12.2%	8.2%	26.2%	44.4%	9.0%	23.1%	9.1%
Available Seats	(37)	(54)	(48)	(53)	(48)	(51)							
No Boundary Change													
<u>No Change:</u>													
Number of Students	378	395	389	394	389	392							
Percent of Building Occupied	111%	116%	114%	116%	114%	115%	12.2%	8.2%	26.2%	44.4%	9.0%	23.1%	9.1%
Available Seats	(37)	(54)	(48)	(53)	(48)	(51)							
Flower Hill Elementary School													
Maximum Number of Seats= 460													
<u>No Change:</u>													
Number of Students	492	486	485	465	455	458							
Percent of Building Occupied	107%	106%	105%	101%	99%	100%	31.5%	10.9%	48.9%	6.6%	<5%	64.1%	34.3%
Available Seats	(32)	(26)	(25)	(5)	5	2							
<u>No Change:</u>													
Number of Students	492	486	485	465	455	458							
Percent of Building Occupied	107%	106%	105%	101%	99%	100%	31.5%	10.9%	48.9%	6.6%	<5%	64.1%	34.3%
Available Seats	(32)	(26)	(25)	(5)	5	2							

Option 2







5/1/2017

	Projected Number of Students						2016-2017 Race/Ethnic Composition						
	Boundary Implemented						% Afr.	% Asian	% Hispanic	% White	% 2 or More	% FARMS	% ESOL
	2017-2018	2018-2019	2019-2020	2020-2021	2021-2022	2022-2023	Amer.						
Mill Creek Towne Elementary													
Maximum Number of Seats= 321													
<u>No Change:</u>													
Number of Students	378	376	375	365	373	373							
Percent of Building Occupied	118%	117%	117%	114%	116%	116%	13.8%	10.0%	46.7%	22.9%	6.6%	49.6%	29.8%
Available Seats	(57)	(55)	(54)	(44)	(52)	(52)							
Receive WashingtonGrove1													
<u>With Change:</u>													
Number of Students	575	318	344	363	399	422							
Percent of Building Occupied	104%	99%	107%	113%	124%	131%	14.3%	9.6%	48.6%	20.9%	6.7%	53.7%	33.5%
Available Seats	(22)	3	(23)	(42)	(78)	(101)							
Judith A. Resnik Elementary													
Maximum Number of Seats= 498													
<u>No Change:</u>													
Number of Students	614	616	593	596	573	581							
Percent of Building Occupied	123%	124%	119%	83%	82%	83%	32.0%	11.1%	41.0%	14.0%	<5%	56.5%	30.4%
Available Seats	(116)	(118)	(95)	121	128	120							
<u>No Change:</u>													
Number of Students	614	616	593	596	573	581							
Percent of Building Occupied	123%	124%	119%	83%	82%	83%	32.0%	11.1%	41.0%	14.0%	<5%	56.5%	30.4%
Available Seats	(116)	(118)	(95)	121	128	120							
Sequoyah Elementary													
Maximum Number of Seats= 490													
<u>No Change:</u>													
Number of Students	406	415	415	441	437	448							
Percent of Building Occupied	83%	85%	85%	90%	89%	91%	14.1%	11.8%	51.5%	22.6%	<5%	58.0%	32.2%
Available Seats	84	75	75	49	53	42							
Receive zones MillCreekTowne4 and MillCreekTowne5 from Mill Creek Townes E5													
<u>With Change:</u>													
Number of Students	406	526	525	549	543	558							
Percent of Building Occupied	83%	107%	107%	112%	111%	114%	14.6%	11.4%	47.4%	25.0%	<5%	51.4%	28.3%
Available Seats	84	(36)	(35)	(59)	(53)	(68)							

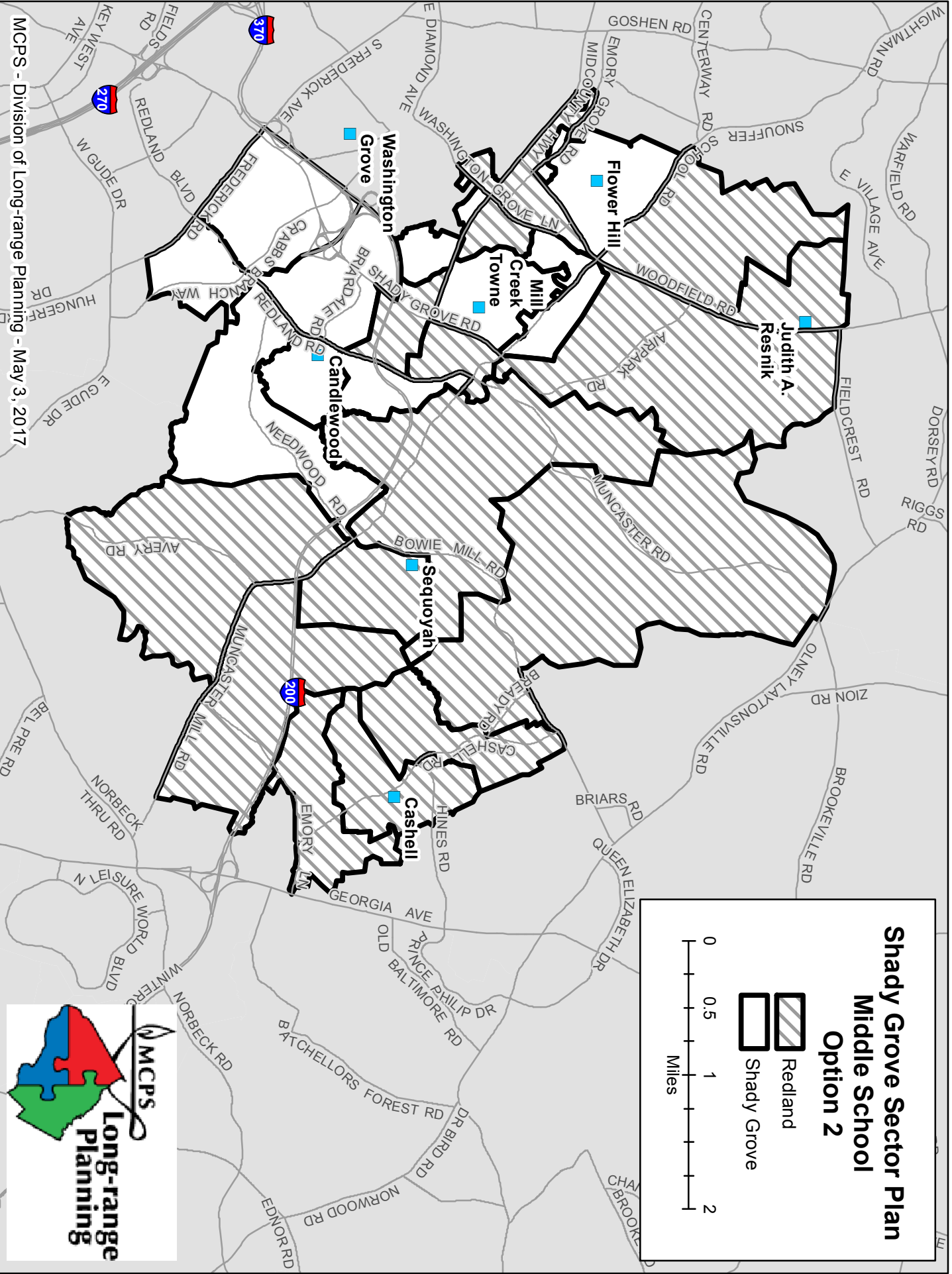


MCPS - Division of Long-range Planning - May 3, 2017

Shady Grove Sector Plan Elementary School Option 2

-  Candlewood
-  Cashell
-  Flower Hill
-  Mill Creek Towne
-  Resnik
-  Sequoyah







MCPS - Division of Long-range Planning - May 3, 2017



**Shady Grove Sector Plan
Middle School
Option 2**

 Redland
 Shady Grove

0 0.5 1 2
Miles