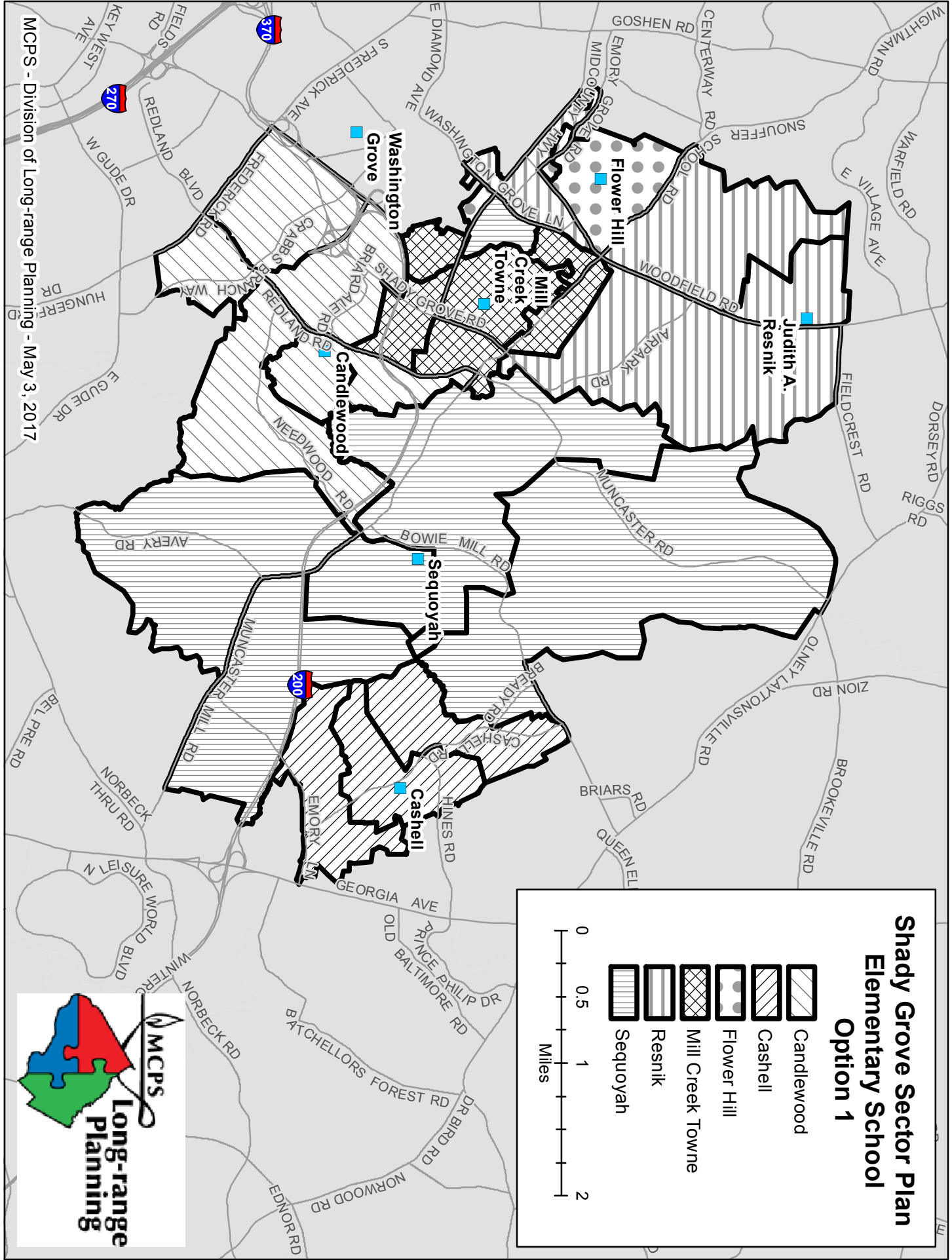


Shady Grove Sector Plan Boundary Study Option 1







5/1/2017

	Projected Number of Students						2016-2017 Race/Ethnic Composition						
	Boundary Implemented						% Afr. Amer.	% Asian	% Hispanic	% White	% 2 or More	% FARMS	% ESOL
	2017-2018	2018-2019	2019-2020	2020-2021	2021-2022	2022-2023							
Magruder High School													
Maximum Number of Seats = 1941													
<u>No Change:</u>													
Number of Students	1,584	1,604	1,707	1,711	1,775	1,872	18.7%	13.3%	38.5%	27.5%	<5%	33.6%	8.6%
Percent of Building Occupied	82%	83%	88%	88%	91%	96%							
Available Seats	357	337	234	230	166	69							
Receive zone WashingtonGrove1 from Gaithersburg HS.													
<u>With Change:</u>													
Number of Students	1,584	1,640	1,761	1,783	1,866	1,981	18.7%	13.3%	38.4%	27.5%	<5%	33.9%	8.8%
Percent of Building Occupied	82%	85%	91%	92%	96%	102%							
Available Seats	357	301	180	158	75	(40)							
Shady Grove Middle School													
Maximum Number of Seats= 846													
<u>No Change:</u>													
Number of Students	629	659	623	659	640	632	19.9%	12.1%	40.2%	22.1%	5.6%	40.3%	8.6%
Percent of Building Occupied	74%	78%	74%	78%	76%	75%							
Available Seats	217	187	223	187	206	214							
Receive zone WashingtonGrove1 from Forest Oak MS.													
<u>With Change:</u>													
Number of Students	629	681	657	704	685	688	20.0%	12.1%	40.0%	22.3%	5.6%	41.1%	9.1%
Percent of Building Occupied	74%	81%	78%	83%	81%	81%							
Available Seats	186	165	189	142	161	158							
Candlewood Elementary													
Maximum Number of Seats= 499													
<u>No Change:</u>													
Number of Students	353	349	356	356	350	360	15.9%	22.1%	13.8%	46.0%	<5%	22.8%	14.5%
Percent of Building Occupied	71%	70%	71%	71%	70%	72%							
Available Seats	146	150	143	143	149	139							
Receive zone WashingtonGrove1 from Washington Grove ES.													
<u>With Change:</u>													
Number of Students	353	402	435	462	482	519	16.3%	21.4%	15.2%	44.5%	<5%	24.5%	15.6%
Percent of Building Occupied	71%	81%	87%	93%	97%	104%							
Available Seats	146	97	64	37	17	(20)							

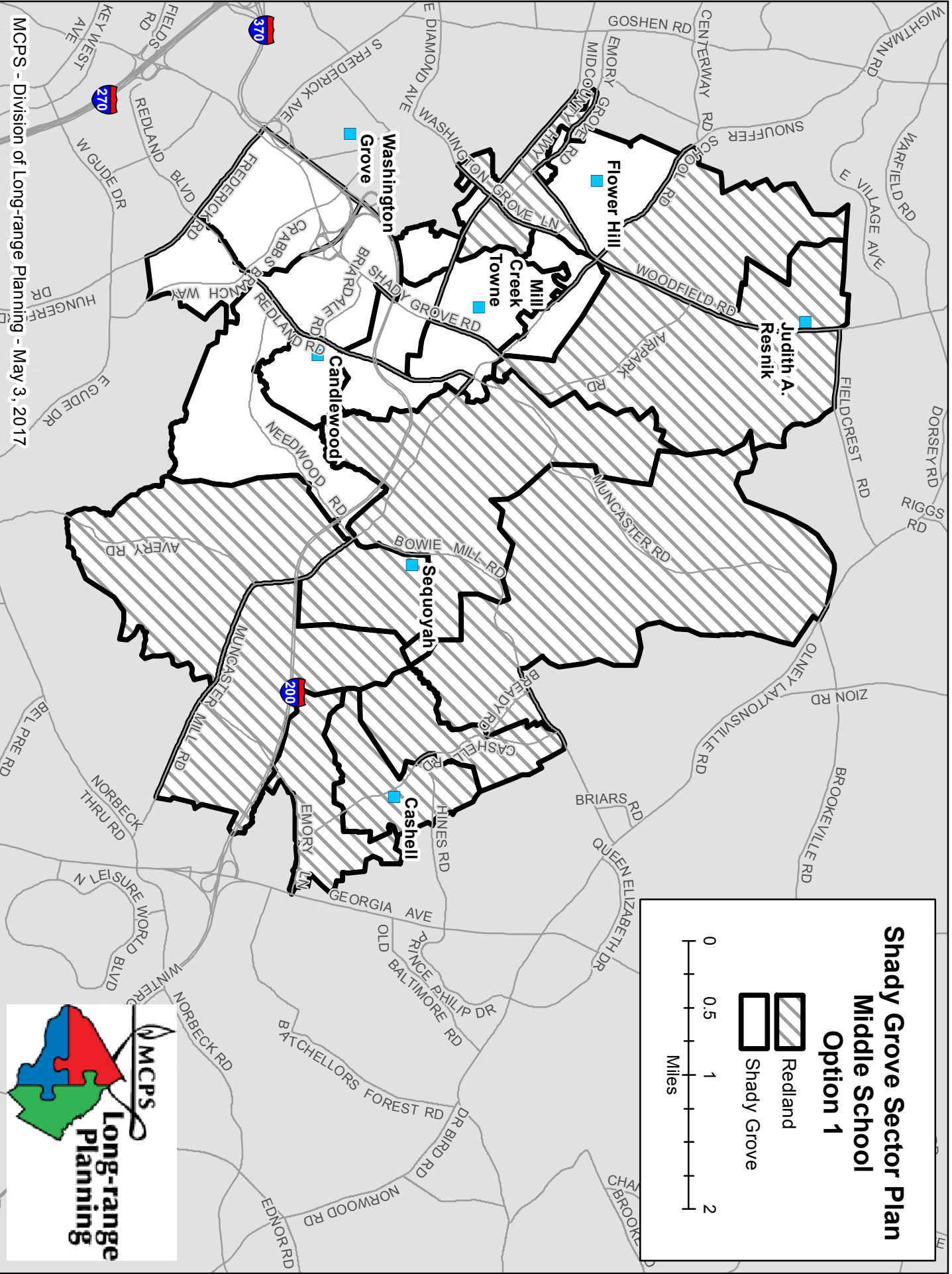


MCPS - Division of Long-range Planning - May 3, 2017

Shady Grove Sector Plan Elementary School Option 1



-  Candlewood
-  Cashell
-  Flower Hill
-  Mill Creek Towne
-  Resnik
-  Sequoyah





MCPS - Division of Long-range Planning - May 3, 2017

**Shady Grove Sector Plan
Middle School
Option 1**

 Redland
 Shady Grove

0 0.5 1 2
Miles

