

# **Clarksburg, Northwest, and Seneca Valley Clusters Boundary Study**

Second Public Information Meeting  
April 29 and 30, and May 1, 2019

<https://www.montgomeryschoolsmd.org/departments/planning/UpcountyHSBoundaryStudy.aspx>



MONTGOMERY COUNTY PUBLIC SCHOOLS

# Agenda

- Current Information
- Policy Factors
- Recap of Options
- Stakeholder Engagement Update
- Next Steps
- Questions and Answers



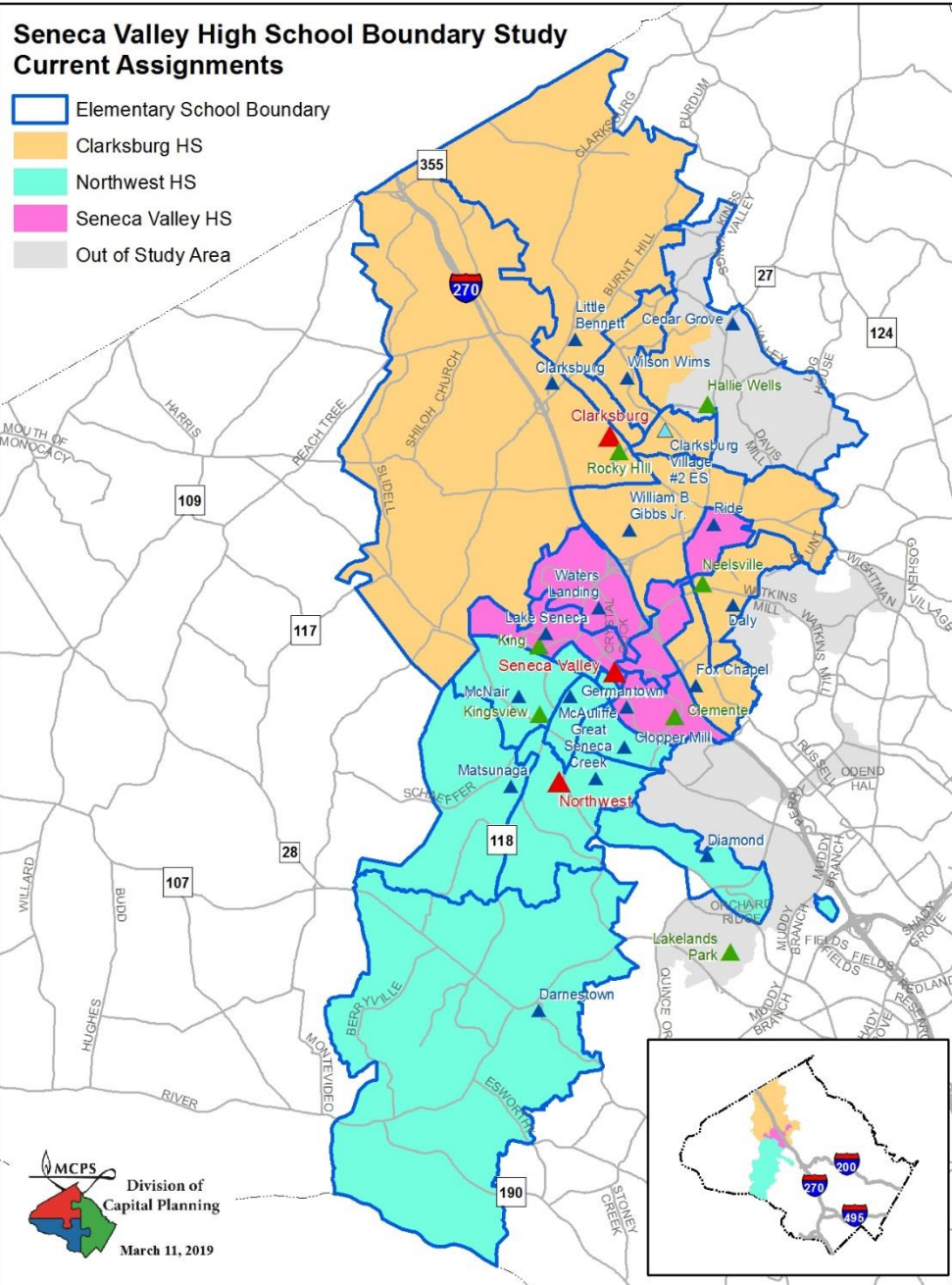
# Current Information

# Current HS Data

School	Projected Number of Students					2018-19 Race/Ethnic Composition						
	2020-21	2021-22	2022-23	2023-24	2024-25	% Afr. Amer.	% Asian	% Hispanic	% White	% 2 or More	% FARMs	% ESOL
<b>Clarksburg HS</b>												
Maximum Number of Seats= 2,034												
Number of Students	2,374	2,487	2,668	2,757	2,848	28.7%	20.4%	26.8%	19.6%	4.3%	27.5%	8.2%
Percent of Building Occupied	117%	122%	131%	136%	140%							
Available Seats	-340	-453	-634	-723	-814							
<b>Northwest HS</b>												
Maximum Number of Seats= 2,286												
Number of Students	2,727	2,776	2,873	2,974	2,981	25.7%	21.1%	21.7%	26.9%	4.4%	22.5%	3.2%
Percent of Building Occupied	119%	121%	126%	130%	130%							
Available Seats	-441	-490	-587	-688	-695							
<b>Seneca Valley HS</b>												
Maximum Number of Seats= 2,581												
Number of Students	1,203	1,214	1,256	1,281	1,301	34.6%	10.9%	35.8%	14.5%	4.1%	39.0%	14.1%
Percent of Building Occupied	47%	47%	49%	50%	50%							
Available Seats	1,378	1,367	1,325	1,300	1,280							

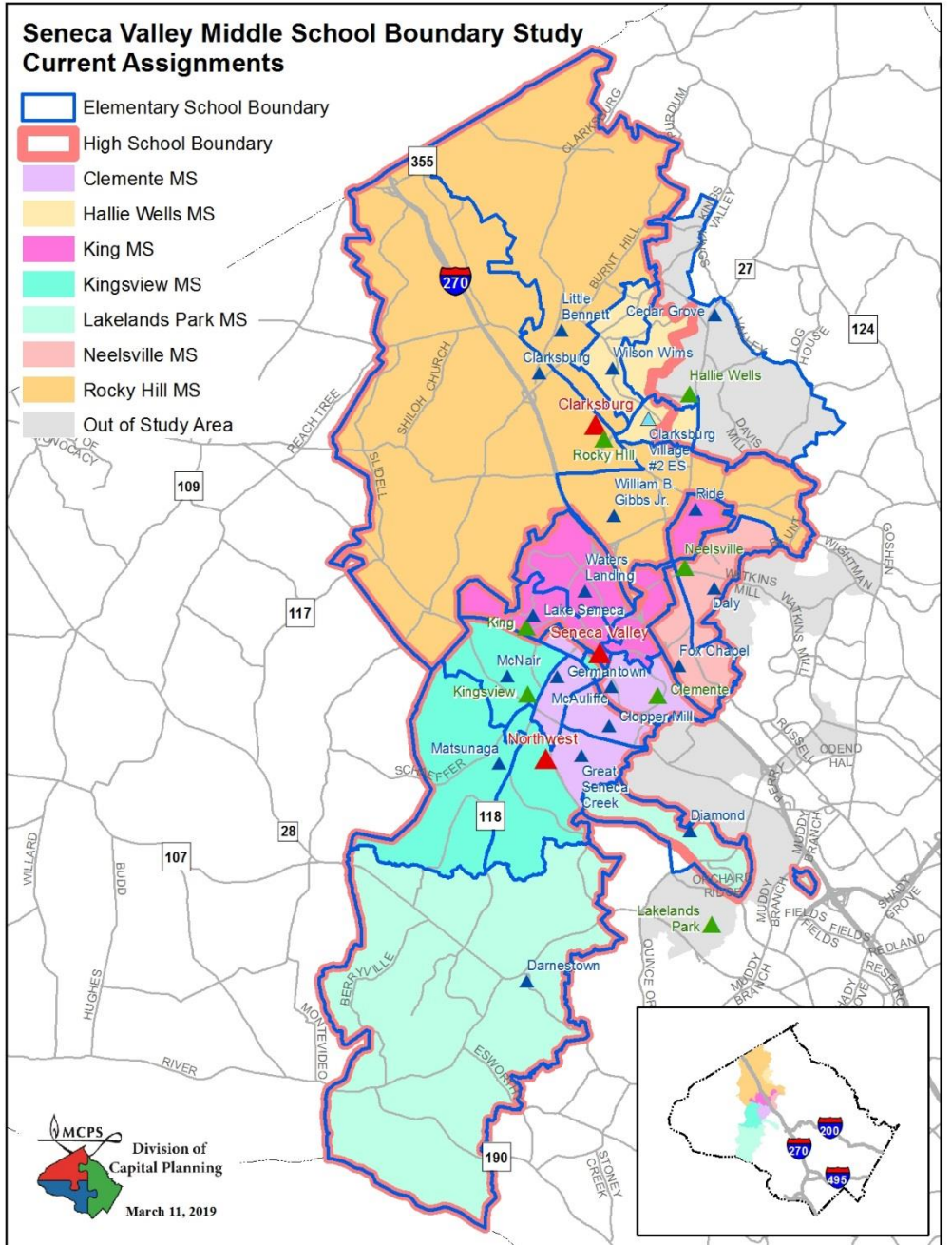
# Seneca Valley High School Boundary Study Current Assignments

- Elementary School Boundary
- Clarksburg HS
- Northwest HS
- Seneca Valley HS
- Out of Study Area



# Seneca Valley Middle School Boundary Study Current Assignments

- Elementary School Boundary
- High School Boundary
- Clemente MS
- Hallie Wells MS
- King MS
- Kingsview MS
- Lakelands Park MS
- Neelsville MS
- Rocky Hill MS
- Out of Study Area



# Policy FAA Factors



# Policy FAA Factors

- Demographic Characteristics of Student Population
  - Analyses of options take into account the overall populations of affected schools
  - Options should especially strive to create a diverse student body
- Geography
  - Options should take into account the geographic proximity of communities to schools, as well as articulation, traffic, and transportation patterns, and topography

# Policy Factors

- Stability of School Assignment Over Time
  - Options should result in stable assignments for as long a period as possible and should consider recent assignments
- Facility Utilization
  - Plans should result in facility utilization in 80-100% range over the long term, whenever possible.
  - Shared use of a facility by more than one cluster may be the most feasible plan in some cases
  - Plans should be fiscally responsible

# Recap of Options



# Recap of Options—General

- 14 staff developed options
- Options advance 3 policy factors to differing degrees
- Developed options grandfather Grades 11 and 12 at the high school level and Grade 8 at the middle school level
  - BOE will make final decision
- Staff will not eliminate any options; superintendent will have the opportunity to review all options before making recommendation

# Recap of Options—Facility Utilization

- No options provide full capacity relief for Clarksburg HS and Northwest HS
- More options provide more capacity relief to Clarksburg HS than Northwest HS
- Anticipated that the new Crown High School will provide capacity relief to Northwest HS
- No additional approved capital projects in CIP to provide capacity relief to Clarksburg HS

# Recap of Options—Geography

- Densely populated areas located near all three high schools
- All three high schools have large walk areas (large percentage)

## Clarksburg Cluster

(5 of 8 feeders have large % of walkers)

- Cedar Grove ES (63%)
- Clarksburg ES (22%)
- Snowden Farm ES
- Little Bennett ES (56%)
- Wilson Wims ES (91%)

## Northwest Cluster

(5 of 7 feeders have large % of walkers)

- Clopper Mill ES (89%)
- Germantown ES (87%)
- Great Seneca Creek ES (86%)
- Spark M. Matsunaga ES (53%)
- Ronald McNair ES (44%)

## Seneca Valley Cluster

(4 of 4 feeders have large % of walkers)

- Lake Seneca ES (96%)
- S. Christa McAuliffe ES (100%)
- Sally K. Ride ES (34%)
- Waters Landing ES (71%)

Percentage of future walkers from Gibbs ES to Clarksburg HS TBD

# Recap of Options–Demographics

- Demographic data displayed in staff developed options are current high school students (2018–2019 school year) either by whole service areas or portions
- Demographics, including race/ethnic, FARMs and ESOL are not projected, they are current high school students
- Demographic data provides an indication of the proposed boundary options in the future
- Demographic data **does not** include future 500 CTE students
- 500 CTE students were **only** shown for utilization purposes

# Recap of Options–Demographics

Capacity		Projected Number of Students					2018–19						
							Race/Ethnic Composition						
		School	2020–21	2021–22	2022–23	2023–24	2024–25	% Afr. Amer.	% Asian	% Hispanic	% White	% 2 or More	% FARMS
School X													
Maximum Number of Seats= 2,500													
<u>No Change:</u>													
Number of Students		1,200	1,250	1,260	1,275	1,300	30.0%	10.0%	25.0%	15.0%	5.0%	35.0%	15.0%
Percent of Building Occupied		48%	50%	50%	51%	52%	Utilization with <u>no</u> change						
Available Seats		1,300	1,250	1,240	1,225	1,200							
<u>With Change:</u>													
Included for Utilization Calculation only													
Number of Students		1,500	1,520	1,530	1,515	1,540	24.0%	24.0%	24.0%	24.0%	4.0%	33.3%	17.5%
Students Reserved for CTE Program		500	500	500	500	500	Utilization with change						
Percent of Building Occupied		80%	87%	94%	96%	96%	Percentages do not include CTE Students						
Available Seats		500	480	470	485	460							

Percentages of 2018-19 HS Students  
No Change

Utilization with no change

Included for Utilization Calculation only

Utilization  
with change

Percentages do not include  
CTE Students

Percentages of 2018-19 HS Students  
With Students Reassigned



# Recap of Options–Demographics

- Percentages of race/ethnic composition, FARMs and ESOL can vary due to:
  - Total number of students reassigned to/from the affected schools (numerator)
  - The total enrollment of the sending/receiving school (denominator)
  - For example, Option 9 has the FARMs rates at all three high schools decreasing as a result of the reassignments

# Stakeholder Engagement Update



# Stakeholder Engagement Update

- In order to continue stakeholder engagement, the survey will continue to remain available online
- It is anticipated that the first survey will close when the second survey opens
- Not all respondents answered every question.

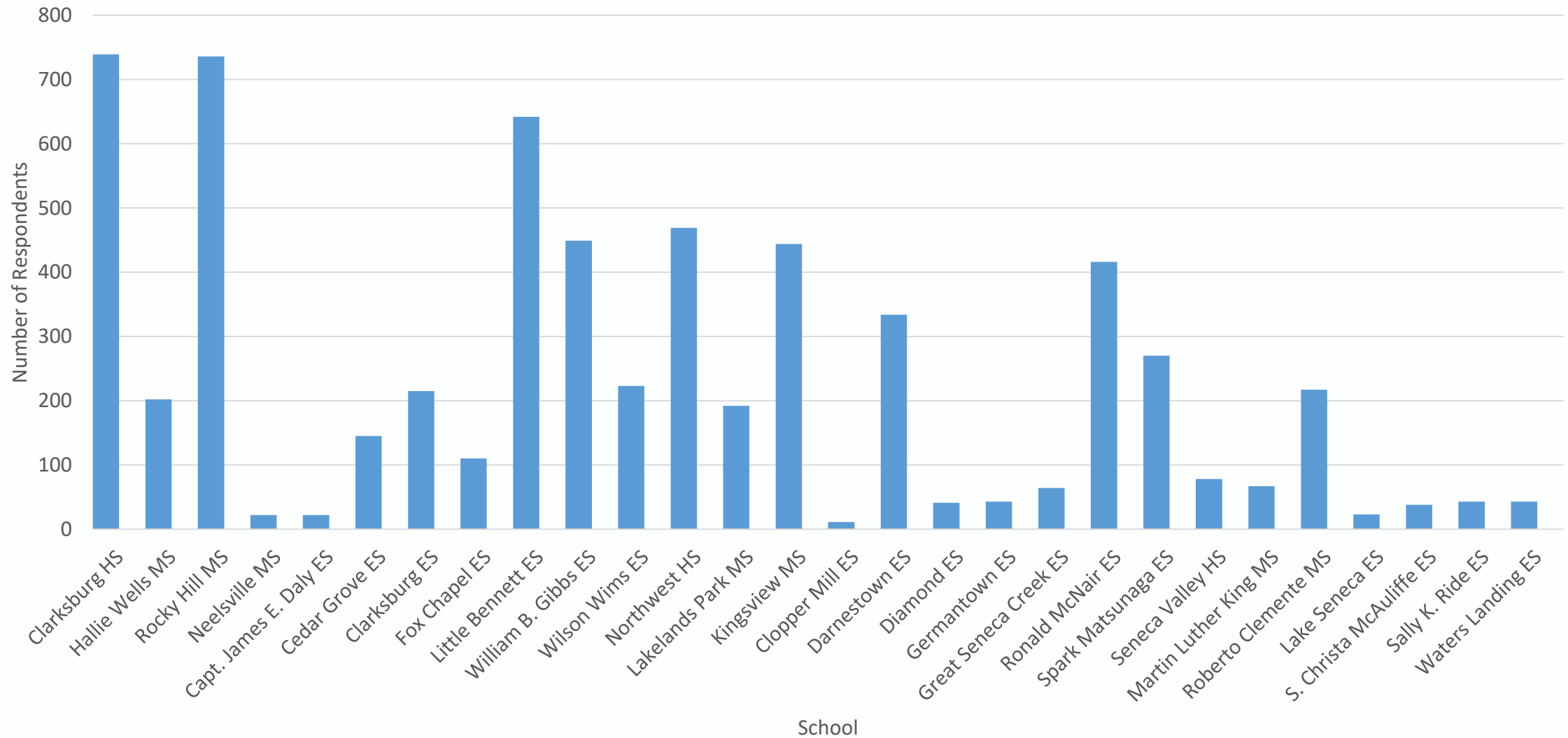


# Summary of Survey Results

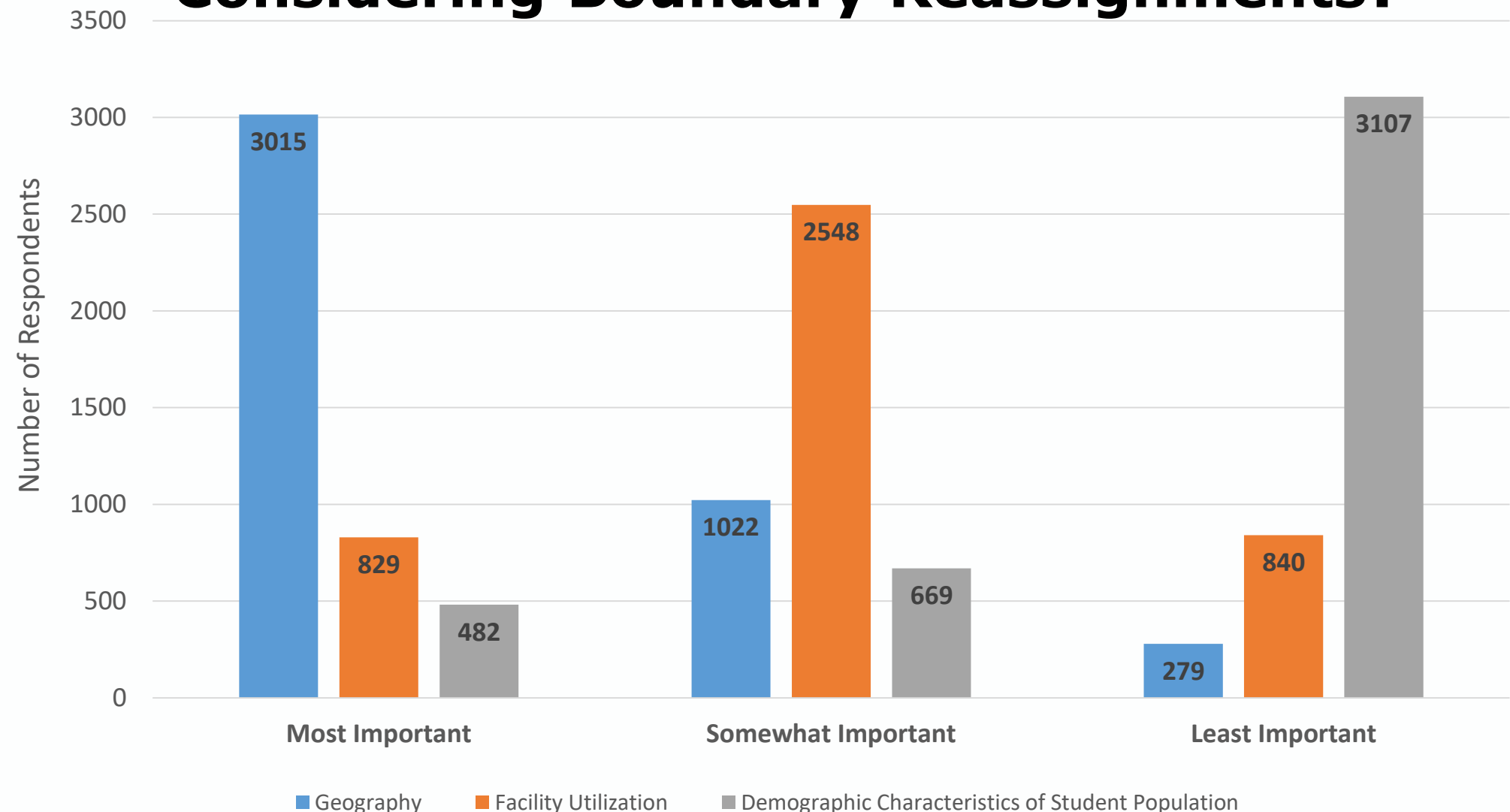
- Total of 4,360 respondents to the survey.
- Of the respondents (can check more than one)
  - 3,068—Parents of students
  - 705—Community members with no children in MCPS
  - 264—MCPS employees
  - 638—MCPS students
- Of the respondents (can check more than one school in the cluster)
  - 3,502—Clarksburg Cluster
  - 2,284—Northwest Cluster
  - 509—Seneca Valley Cluster
- Respondents interested in (top 3)
  - 3,284—Advanced Placement/International Baccalaureate Classes
  - 2,827—College Credit Programs
  - 1,779—Cyber Security/Computer Sciences



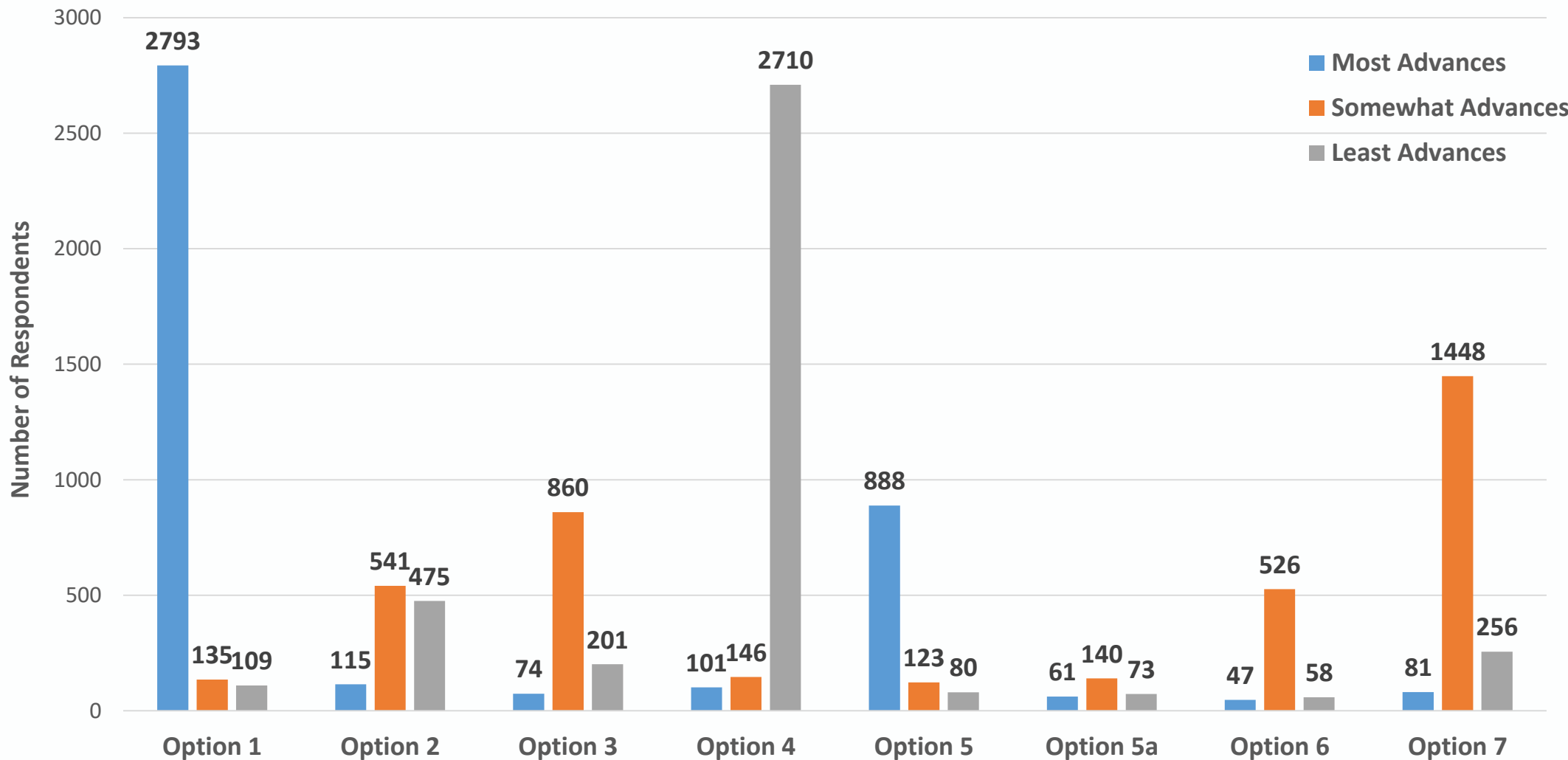
# Number of Respondents by School



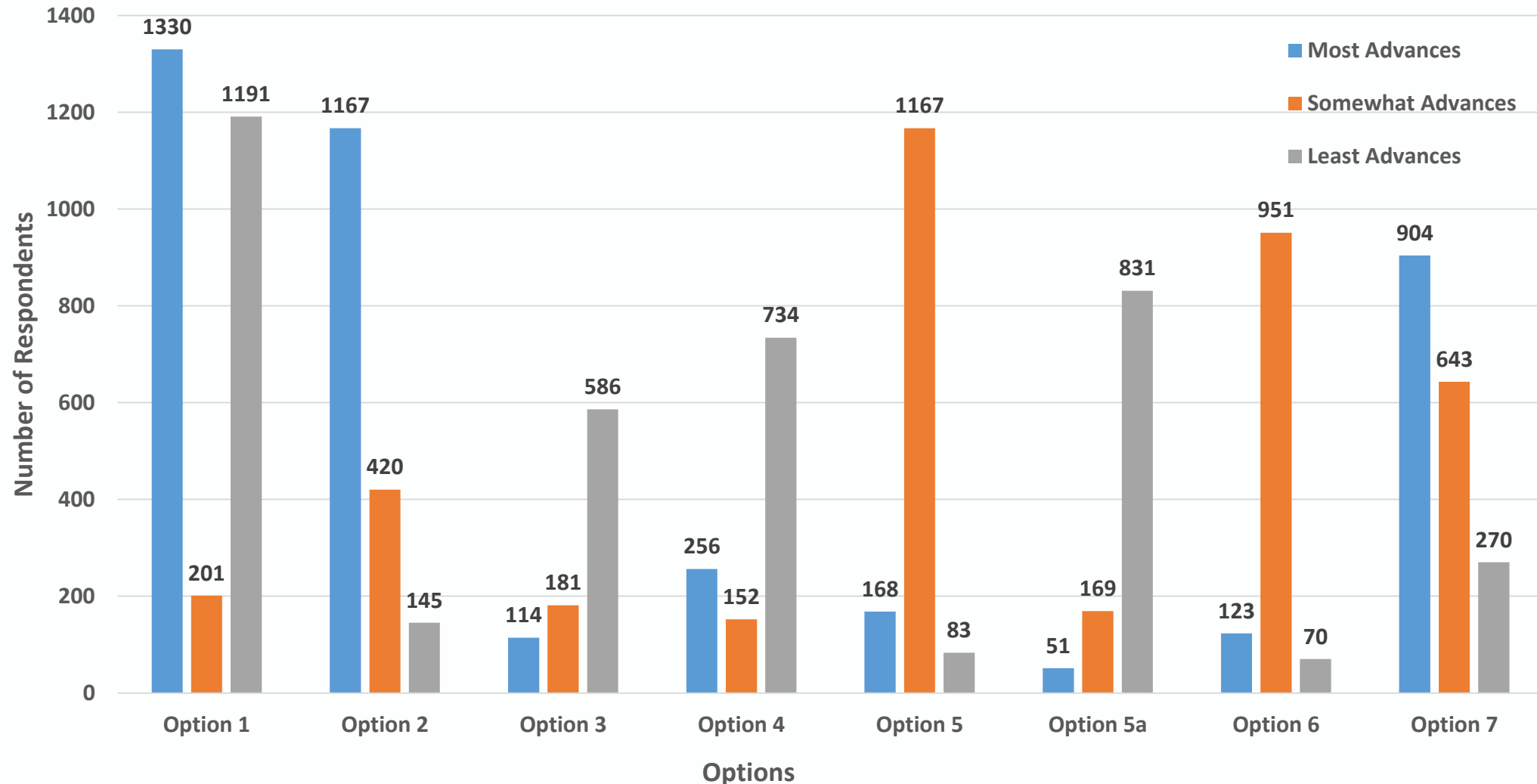
# How Important To You Are The Following Factors When Considering Boundary Reassignments?



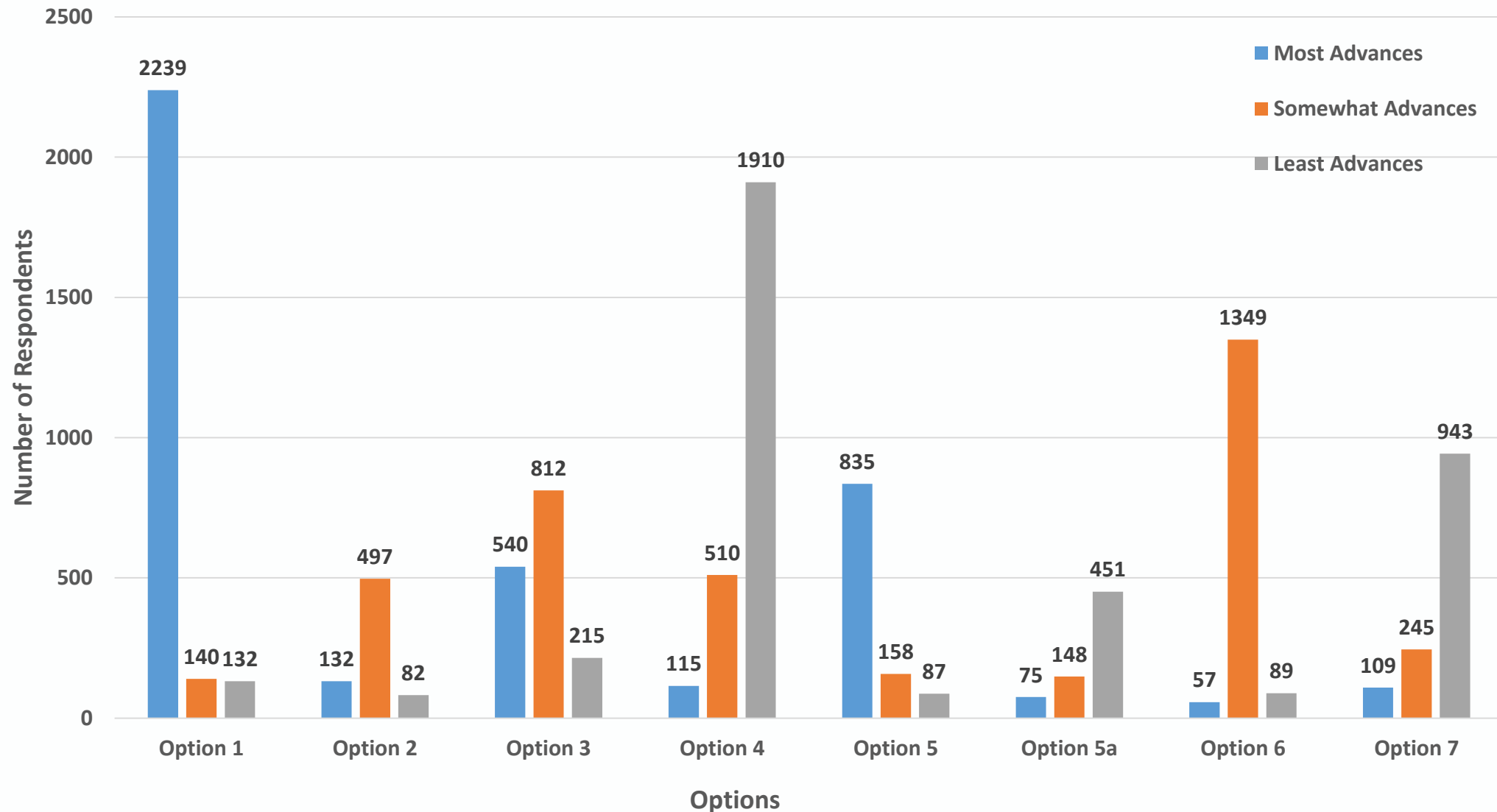
# Overall Which Options Do You Believe Most Advances The Board of Education's Factor For Geography?



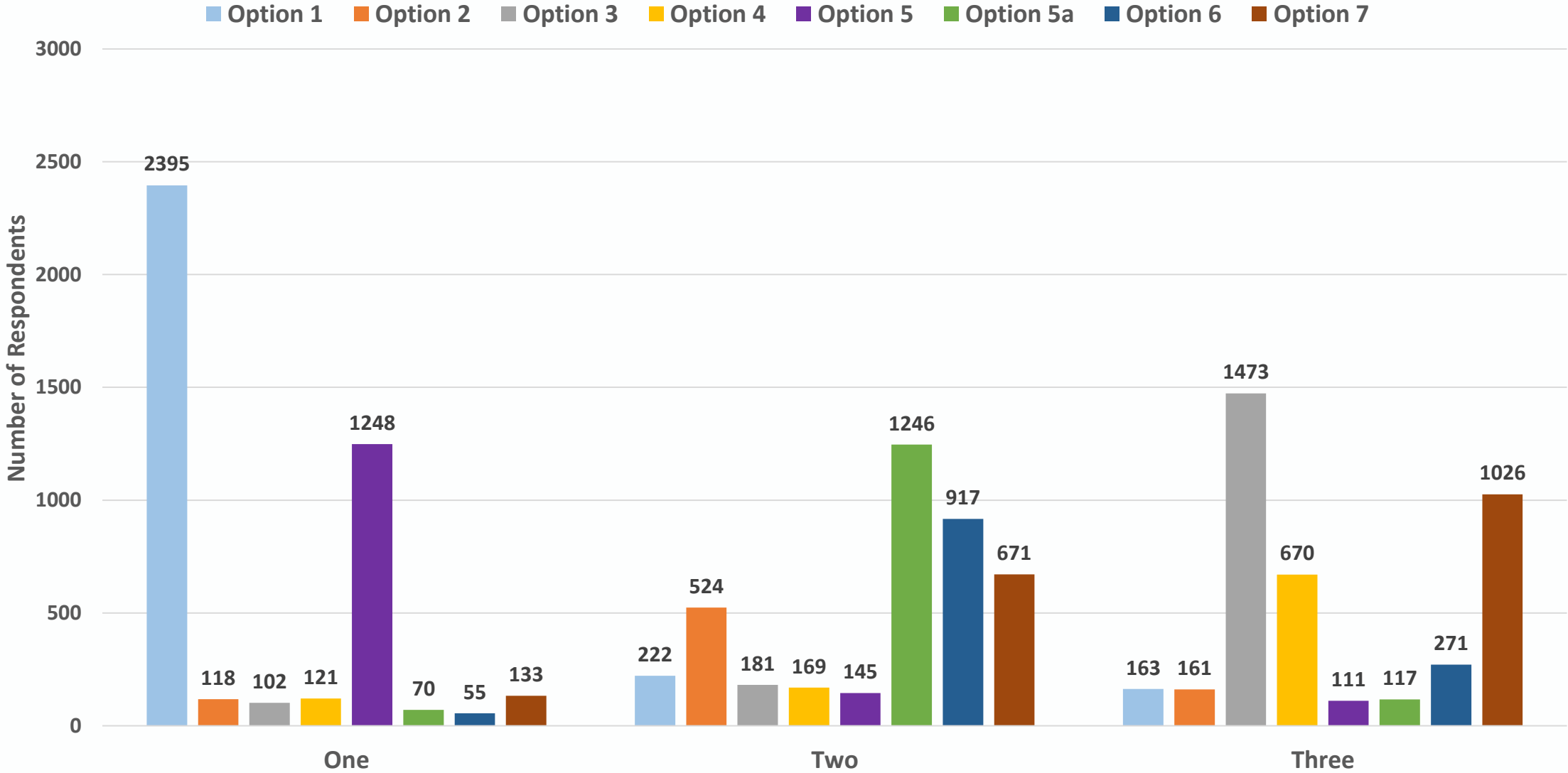
# Overall Which Options Do You Believe Most Advances The Board of Education's Factor For Demographic Characteristics Of Student Population?



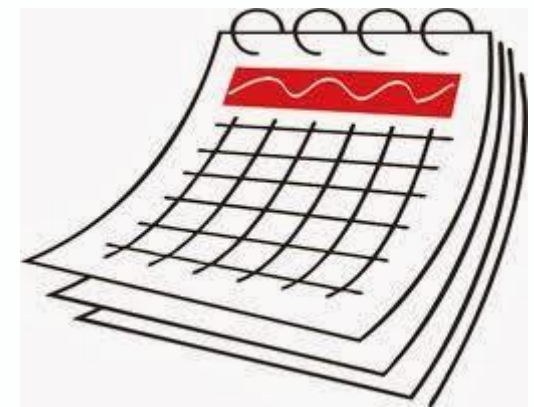
# Overall Which Options Do You Believe Most Advances The Board of Education's Factor For Facility Utilization?



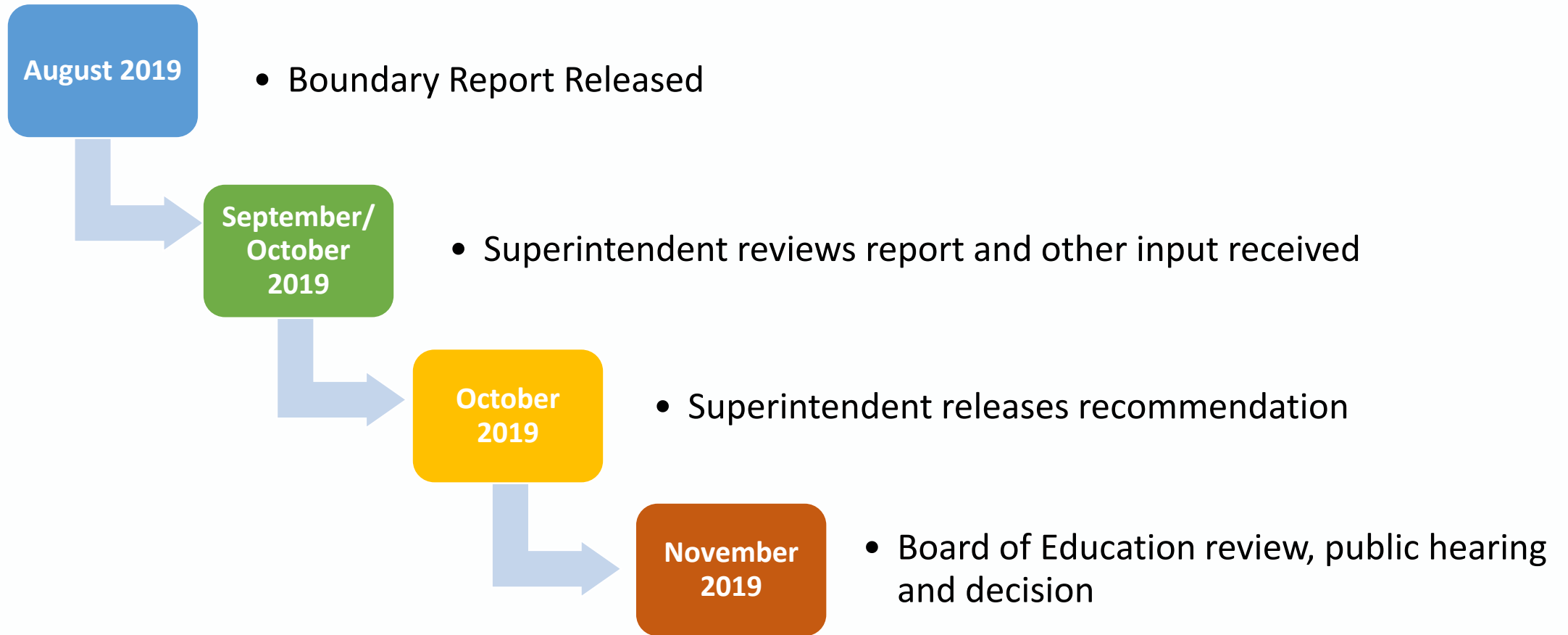
# Indicate Your Top Three Preferred Options



# Next Steps



# Next Steps



# Boundary Report and Review

## Boundary Report (August 2019)

- Description of process
- Summary of options
- Stakeholder survey information and analysis

## Superintendent Review (September/October 2019)

- Superintendent reviews report including all options developed and other stakeholder input
- Superintendent may request staff to develop other options for review

# Recommendation Release

## Superintendent's Recommendation (October 2019)

- Release in October 2019
- Will include explanation on how policy factors are advanced and rationale for recommendation
- Superintendent will make recommendations regarding program implementation at high schools

## Stakeholder Engagement (mid-October— November 2019)

- Once released, stakeholders can contact BOE to request alternatives to the superintendent's recommendation
- Alternatives may be options considered during process or new options
- Support for alternative by BOE member does not necessarily indicate support for alternative over superintendent's recommendation

# BOE Process

## BOE Work Sessions

(November 2019)

- Staff presents boundary recommendation to BOE members
- BOE offers and votes on possible alternatives to superintendent's recommendation
- Requires majority vote by BOE members for consideration during public hearing
- More than one alternative may be considered by BOE

## BOE Public Hearing

(November 2019)

- Cluster coordinators and individual members of the community are given an opportunity to testify in support or against superintendent's recommendation and/or any BOE adopted alternatives

# BOE Decision and Implementation

## BOE Action (November 2019)

- BOE takes action at end of November 2019
- BOE will make final decision on grandfathering for middle and high school students

## Implementation (September 2020)

- Boundaries take effect in September 2020
- Program implementation will take effect

# Questions and Answers

