

Clarksburg, Northwest, and Seneca Valley Clusters Boundary Study

Presentation of First Round of Options
March 11, 12, and 13, 2019



MONTGOMERY COUNTY PUBLIC SCHOOLS

Agenda

- Board of Education Approved Resolution
- Policy Factors
- Guiding Parameters for Option Development
- Current Information
- Presentation of Options
- Questions and Answers
- Next Steps



Board Resolution

- Adopted November 2018
- Will explore school reassignments for Clarksburg, Northwest, and Seneca Valley high schools
- Expanded the scope to include all of the middle schools in these three clusters
- Will address student enrollment patterns and utilization rates at the middle schools in these clusters
- Report to be forwarded to the Board by end of school year
- **No** elementary school boundaries will be changed

http://gis.mcpsmd.org/boundarystudypdfs/SVHS_BOEAdoptedBoundaryStudy.pdf



Policy FAA Factors



Policy FAA Factors

- Demographic Characteristics of Student Population
 - Analyses of options take into account the overall populations of affected schools
 - Options should especially strive to create a diverse student
- Geography
 - Options should take into account the geographic proximity of communities to schools, as well as articulation, traffic, and transportation patterns, and topography



Policy Factors

- **Stability of School Assignment Over Time**
 - Options should result in stable assignments for as long a period as possible and should consider recent assignments
- **Facility Utilization**
 - Plans should result in facility utilization in 80-100% range over the long term, whenever possible.
 - Shared use of a facility by more than one cluster may be the most feasible plan in some cases
 - Plans should be fiscally responsible



Parameters for Option Development



Guiding Parameters for Option Development

- Three policy factors used to develop options
 - Demographic Characteristics of Student Population
 - Geography
 - Facility Utilization
- Stability factor does not need to be considered in this boundary study
 - No students reassigned when Hallie Wells MS opened would be impacted by this boundary study
- Try and avoid triple articulation at the middle school level
- Maintain walkers at high schools and middle schools



Guiding Parameters for Option Development

- No options will provide full capacity relief for Clarksburg HS and Northwest HS
- Anticipated that the new Crown High School will provide capacity relief to Northwest HS
- Most options will provide more capacity relief to Clarksburg HS than Northwest HS
- Developed options grandfather Grades 11 and 12 at the high school level and Grade 8 at the middle school level
 - BOE will make final decision



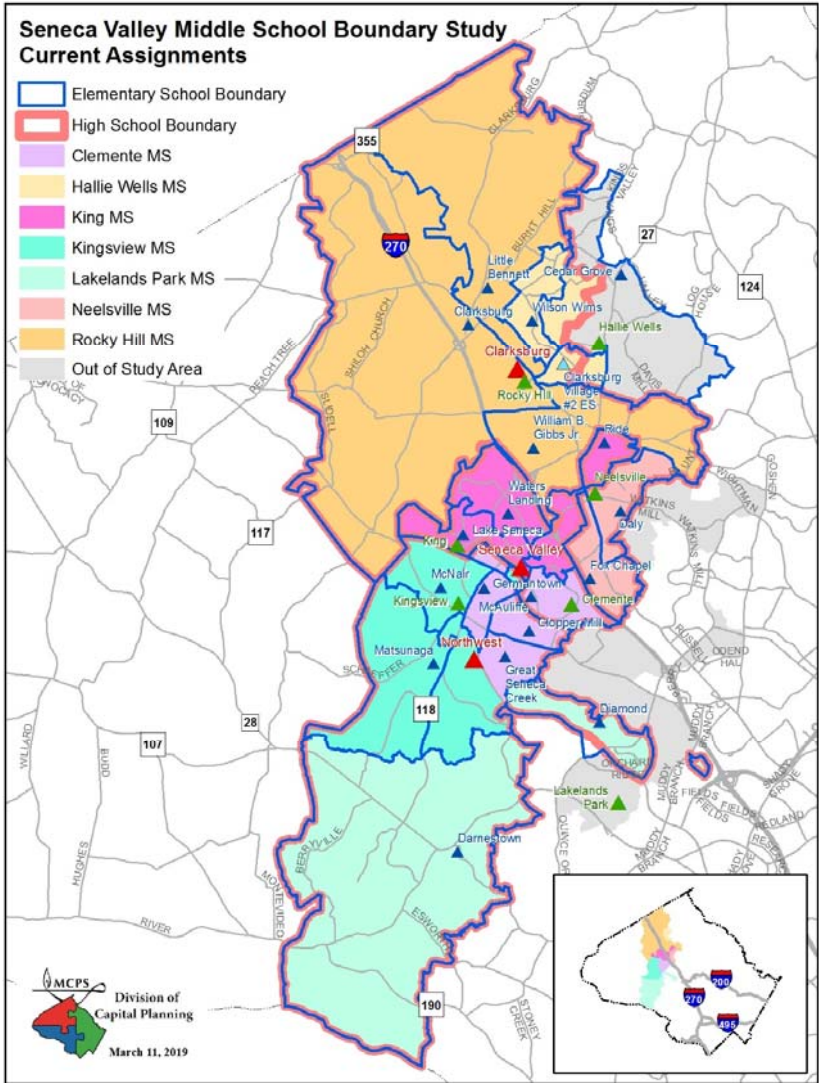
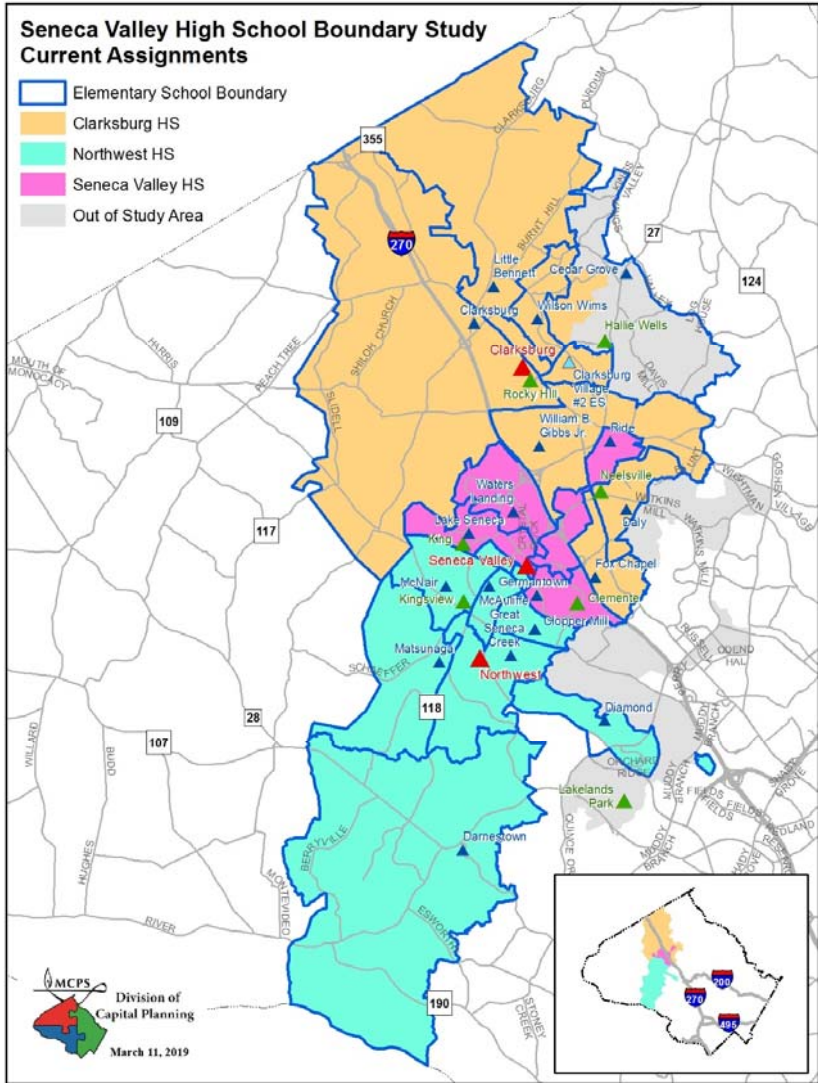
Current Information



Current HS Data

School	Projected Number of Students					2018-19 Race/Ethnic Composition						
	2020-21	2021-22	2022-23	2023-24	2024-25	% Afr. Amer.	% Asian	% Hispanic	% White	% 2 or More	% FARMS	% ESOL
	Clarksburg HS											
Maximum Number of Seats= 2,034												
Number of Students	2,374	2,487	2,668	2,757	2,848	28.7%	20.4%	26.8%	19.6%	4.3%	27.5%	8.2%
Percent of Building Occupied	117%	122%	131%	136%	140%							
Available Seats	-340	-453	-634	-723	-814							
Northwest HS												
Maximum Number of Seats= 2,286												
Number of Students	2,727	2,776	2,873	2,974	2,981	25.7%	21.1%	21.7%	26.9%	4.4%	22.5%	3.2%
Percent of Building Occupied	119%	121%	126%	130%	130%							
Available Seats	-441	-490	-587	-688	-695							
Seneca Valley HS												
Maximum Number of Seats= 2,581												
Number of Students	1,203	1,214	1,256	1,281	1,301	34.6%	10.9%	35.8%	14.5%	4.1%	39.0%	14.1%
Percent of Building Occupied	47%	47%	49%	50%	50%							
Available Seats	1,378	1,367	1,325	1,300	1,280							





Options—Please click on a link below for the options and maps

- [English Options](#)
- [Mandarin Options](#)
- [Spanish Options](#)



Revised (in bold) Average Time on the Bus

	Average Amount of Time
McNair ES service area to Seneca Valley HS	15 minutes
Daly ES service area to Clarksburg HS	14 minutes
Daly ES service area to Seneca Valley HS	15 minutes
Gibbs ES service area to Clarksburg HS	15 minutes
Gibbs ES service area to Seneca Valley HS	15 minutes
Fox Chapel ES service area to Clarksburg HS	18 minutes
Fox Chapel ES service area to Seneca Valley HS	15 minutes
Little Bennett ES service area to Clarksburg HS	25 minutes
Little Bennett ES service area to Seneca Valley HS	40 minutes
Darnestown ES service area to Northwest HS	40 minutes
Darnestown ES service area to Seneca Valley HS	45 minutes



Interactive Map

- <https://mcpsgis.maps.arcgis.com/apps/PublicInformation/index.html?appid=8e721ff7cdd24b27a3754d72083d3e66>



Next Steps

- Evaluation Forms for Tonight's Meeting (Pink Sheets)
- Stakeholder Survey
 - Will be available on the Division of Capital Planning website later this week
- Next Round of Meetings:
 - Monday, April 8—Northwest HS
 - Tuesday, April 9—Seneca Valley HS
 - Thursday, April 11—Clarksburg HS

