

Superintendent's Recommendation on the Boundary Study for Forest Knolls, Montgomery Knolls, and Pine Crest Elementary Schools

October 16, 2019

Executive Summary

On November 27, 2018, the Board of Education authorized a boundary study to explore school assignments between Forest Knolls, Montgomery Knolls, and Pine Crest elementary schools. In order to evaluate the enrollment and articulation patterns, the scope of the boundary study also included Eastern and Silver Spring International middle schools. Currently, Forest Knolls Elementary School articulates to Silver Spring International Middle School, while Montgomery Knolls and Pine Crest elementary schools articulate to Eastern Middle School.

A comprehensive capacity study was conducted during the 2014–2015 school year to address overutilization in the lower portion of the Downcounty Consortium, resulting in a plan to address overutilization at Forest Knolls Elementary School. As part of the *FY 2019 Capital Budget and the FY 2019–2024 Capital Improvements Program*, the Board of Education approved additions at Montgomery Knolls and Pine Crest elementary schools to relieve the projected overcrowding at Forest Knolls Elementary School.

Additions are under construction at these schools and are scheduled for completion in September 2020. Student enrollment continues to increase at Forest Knolls Elementary School and projections indicate student enrollment will exceed capacity by approximately 246 students by the end of the six-year planning period. Montgomery Knolls and Pine Crest elementary schools are paired schools, with Montgomery Knolls Elementary School serving pre-K–Grade 2 students and Pine Crest Elementary School serving Grades 3–5 students.

In accordance with Board of Education Policy FAA, *Educational Facilities Planning*, I directed staff to develop options that would change school boundaries in this area of the county. Montgomery County Public Schools (MCPS) staff developed three options to advance the following factors described in the policy:

- Demographic Characteristics of Student Population;
- Geography;
- Facility Utilization; and
- Stability of School Assignment Over Time.

The stability of school assignment over time factor only needs to be considered when recent boundary changes occur in the study area. As no recent boundary studies have occurred in these service areas, the stability factor does not need to be considered as part of the boundary analysis.

Staff solicited stakeholder input in accordance with Board of Education Policy ABA, *Community Involvement*. MCPS staff held six community meetings for this boundary process, three at Forest Knolls Elementary School and three at Montgomery Knolls Elementary School, to share

information and solicit input. The Montgomery Knolls and Pine Crest elementary schools' Parent Teacher Associations (PTAs) recommended meeting at Montgomery Knolls Elementary School to facilitate the best turnout. An online survey was available for stakeholders to provide input on the options and the process.

To formulate my recommendation, I carefully reviewed and considered the three options and the stakeholder input received for these options in the context of the three policy factors. After review of all the information and updated student enrollment projections, I recommend Option 1, as I believe it most advances the three policy factors. A map of the recommended boundary and table that illustrates the effect of the recommendation on the schools is included at the end of this recommendation report.

My recommendation includes the following reassignments from Forest Knolls Elementary School. The zones referenced are included in the map.

- Zones F3 and F4 from Forest Knolls Elementary School to Montgomery Knolls and Pine Crest elementary schools.

With respect to the middle school reassignment, my recommendation is to maintain the current middle school assignments for Forest Knolls, Montgomery Knolls, and Pine Crest elementary schools.

With respect to the implementation of this boundary reassignment, I recommend the following:

- Grade 5 students in the 2020–2021 school year, recommended to be reassigned, complete elementary school at their current school of attendance.
- Grade 2 students in the 2020–2021 school year, recommended to be reassigned, complete Grade 2 at their current school of attendance (Forest Knolls Elementary School). However, in the 2021–2022 school year, those students recommended to be reassigned, but remained in their current school of attendance for Grade 2 (Forest Knolls Elementary School), will then be reassigned to Pine Crest Elementary School for Grades 3–5. This recommendation is to avoid Grade 2 students, in the 2020–2021 school year, if reassigned, to attend three different school buildings in the span of their elementary school career (Forest Knolls, Montgomery Knolls, and Pine Crest elementary schools).

The scope, background, boundary study process, analysis of the options, and basis for my recommendation follow.

Scope of Boundary Study

On November 27, 2018, the Board of Education authorized a boundary study to explore school assignments between Forest Knolls, Montgomery Knolls, and Pine Crest elementary schools. In order to evaluate the enrollment and articulation patterns, the scope of the boundary study also included Eastern and Silver Spring International middle schools. Currently, Forest Knolls Elementary School articulates to Silver Spring International Middle School, while Montgomery Knolls and Pine Crest elementary schools articulate to Eastern Middle School. See Attachment A for the current articulation chart of these schools and map.

Background

A comprehensive capacity study was conducted during the 2014–2015 school year to address overutilization in the lower portion of the Downcounty Consortium. As part of the *FY 2019 Capital Budget and the FY 2019–2024 Capital Improvements Program*, the Board of Education approved additions at Montgomery Knolls and Pine Crest elementary schools to relieve the projected overcrowding at Forest Knolls Elementary School. Additions are under construction at these schools and are scheduled for completion in September 2020.

Montgomery Knolls and Pine Crest elementary schools are paired schools, with Montgomery Knolls Elementary School serving pre-K–Grade 2 students and Pine Crest Elementary School serving Grades 3–5 students. The addition at Montgomery Knolls Elementary School will increase the capacity to 681 students, while the addition at Pine Crest Elementary School will increase the capacity to 634 students.

Student enrollment continues to increase at Forest Knolls Elementary School and projections indicate student enrollment will exceed capacity by 186 students by the end of the six-year planning period. The enrollment at Montgomery Knolls Elementary School is projected to be 453 students, leaving a surplus of 228 seats available, while the enrollment at Pine Crest Elementary School is projected to be 406 students, leaving a surplus of 228 seats available, by the end of the six-year planning period.

The following table displays the updated projected enrollment and space available for the three elementary schools.

Enrollment Projections and Space Available

	2020– 2021	2021– 2022	2022– 2023	2023– 2024	2024– 2025	2025– 2026
Forest Knolls Elementary School						
Total Number of Seats	529	529	529	529	529	529
Total Number of Students	747	758	761	739	742	715
<i>Total Space Available</i>	<i>-218</i>	<i>-229</i>	<i>-232</i>	<i>-210</i>	<i>-213</i>	<i>-186</i>
Montgomery Knolls Elementary School						
Total Number of Seats	681	681	681	681	681	681
Total Number of Students	479	469	467	458	456	453
<i>Total Space Available</i>	202	212	214	223	225	228
Pine Crest Elementary School						
Total Number of Seats	634	634	634	634	634	634
Total Number of Students	387	407	412	423	406	406
<i>Total Space Available</i>	247	227	222	211	228	228

Planning Factors

Board of Education Policy FAA, *Educational Facilities Planning*, guides the boundary study process when changing school boundaries and describes four factors to be considered. These factors are to be considered by staff when developing options, as well as in developing my recommendations. It is important to note, while all the factors were considered in the development of the options and my recommendation, not all the factors are always able to be reconciled in each option or the recommendation. The factors are described in the following paragraphs.

Demographic Characteristics of Student Population

Analyses of options should take into account the impact of various options on the overall populations of affected schools. Options especially should strive to create a diverse student body in each of the affected schools in alignment with Board of Education Policy ACD, *Quality Integrated Education*. Demographic data displaying the impact of various options include the following: racial/ethnic composition of the student population, the socioeconomic composition of the student population, the level of English language learners, and other reliable demographic indicators and participation in specific educational programs.

Geography

In accordance with MCPS' emphasis on community involvement in schools, options should take into account the geographic proximity of communities to schools, as well as articulation, traffic, and transportation patterns, and topography. In addition, options should consider, at a minimum, not only schools within a high school cluster but also other adjacent schools.

Stability of School Assignment Over Time

Options should result in stable assignments for as long a period as possible. Student reassignments should consider recent boundary or geographic student choice assignment plan changes, and/or school closings and consolidations that may have affected the same students.

Facility Utilization

School boundary and geographic student choice assignment plans should result in facility utilizations in the 80 percent to 100 percent efficient range during the long term, whenever possible. Shared use of a facility by more than one cluster may be the most feasible facility plan in some cases, taking into consideration the impact of the resulting articulation pattern on the community. Plans fiscally should be responsible to minimize capital and operating costs whenever feasible.

As previously stated, the stability of school assignment over time factor only needs to be considered when recent boundary changes occur in the study area. As no recent boundary studies have occurred in these service areas, the stability factor does not need to be considered as part of the boundary analysis.

Stakeholder Input

Staff solicited stakeholder input in accordance with Board of Education Policy ABA, *Community Involvement*, and this input informed my recommendation. Outreach was conducted through a variety of approaches including the following:

- Connect-ED messages;
- Flyers to schools;
- Community-wide meetings;
- Interactive map;
- Webcast;
- Online survey; and
- Review of e-mail communications and letters.

A description of the outreach methods follows.

Connect-ED messages and Flyers to schools

Division of Capital Planning (DCP) staff collaborated with staff in the Office of Communications (OC) to share information about the boundary study with stakeholders. All information related to the boundary study was posted on the DCP website. Information flyers in four languages (English, Spanish, Amharic, and French) were sent to the three elementary schools and the two middle schools included in the boundary study to notify the school communities of all upcoming meetings. In addition, OC staff sent Connect-ED electronic voice messages and electronic messages to the homes of students at all elementary and middle schools included in the scope of the boundary study. A total of four electronic mail messages were sent during the boundary process to notify parents of upcoming meetings and the availability of an online survey.

Community-wide Meetings

DCP staff facilitated all the boundary study meetings. Each of the meetings was conducted twice—once at Forest Knolls Elementary School and once at Montgomery Knolls Elementary School—to ensure that all community members had geographic access to attend the meetings. The Montgomery Knolls and Pine Crest elementary schools' PTAs recommended meeting at Montgomery Knolls Elementary School to facilitate the best turnout. For all meetings, staff distributed index cards for attendees to submit written questions that staff responded to during the last part of each set of meetings.

At the first set of meetings, staff presented the following information:

- Background and scope;
- Projections and seats available;
- Revised Board of Education Policy FAA and planning factors;
- Boundary process; and
- Schedule of meetings.

Staff answered many questions relating to the history and process. In total, approximately 100 individuals attended the first set of meetings.

For the second set of meetings, staff presented three options for stakeholder consideration. The presentation included the guiding parameters for option development, as well as a review of the policy factors and background. OC staff livestreamed the meeting, and then the recording was posted on the DCP website to allow stakeholders who could not attend one of the two live meetings to view the information online. Approximately 100 individuals also attended these two meetings. Based on the input received after the second meeting, staff determined that no additional options needed to be developed for community input. Therefore, the third set of meetings was cancelled.

At the final set of meetings, staff provided a general overview of the three options by policy factor, as well as an update on the survey. Staff also provided a presentation on the decision-making process by the Board of Education.

Online Survey

An online survey was posted in seven languages (English, Amharic, Korean, Mandarin, Spanish, Vietnamese, and French). A total of 278 individuals responded to the survey. Questions in the survey included, for example, how important each of the three policy factors would be when considering boundary assignments and for respondents to indicate their top three preferred options.

Interactive Map

An interactive map was created and posted on the DCP website that allowed stakeholders to enter their home address to determine if any of the proposed options would reassign their home.

Staff also reviewed and considered information received via e-mail communications to inform option development, as well as to provide additional information to stakeholders at the meetings, including information regarding proposed transportation projects in the areas included in the boundary study.

Option Development

In accordance with Board of Education Policy FAA, *Educational Facilities Planning*, I directed staff to develop options when changing school boundaries. Staff developed three options to advance each of the factors described in the preceding material. As noted in the Planning Factors section, only three of the four factors were considered in the development of the options, and those options advance each of the factors to varying degrees. The options are included in Attachment B.

Review of Boundary Options

MCPS staff prepared three options. To develop the options, MCPS staff used the following guiding parameters in each round of options:

- Advance three of the four Board of Education policy factors that include:
 - Demographic Characteristics of Student Population;
 - Geography; and
 - Facility Utilization.
- Develop options that grandfathered Grade 5 at the elementary level and Grade 8 at the middle school level.

Three options were presented to solicit input from the community through feedback during the meetings and an online survey.

The following table displays the racial/ethnic composition for the schools used in the study for the 2018–2019 school year, grouped by elementary school and middle school, as well as the Free and Reduced-price Meals System (FARMS) participation and English for Speakers of Other Languages (ESOL) population.

Racial/Ethnic Composition

2018–2019							
School	% Black or African American	% Asian	% Hispanic/Latino	% White	% Two or More Races	% FARMS	% ESOL
Elementary Schools							
Forest Knolls	14.8	5.4	38.7	33.4	7.4	30.1	19.0
Montgomery Knolls	26.6	3.5	46.6	17.2	5.9	58.8	42.1
Pine Crest	24.4	5.7	41.4	24.8	3.7	47.4	31.7
Middle Schools							
Eastern	19.8	9.3	46.7	20.3	3.6	49.8	17.7
Silver Spring International	21.2	5.4	41.5	26.9	4.4	38.3	14.4

The differences among the elementary schools in the racial/ethnic composition of the student body range from 16.2 percent in the White population between Forest Knolls and Montgomery Knolls elementary schools, to 2.2 percent in the Asian population between Montgomery Knolls and Pine Crest elementary schools. With regard to the FARMS participation and ESOL population, the difference ranges from 28.7 and 23.1 percent between Forest Knolls and Montgomery Knolls elementary schools, respectively.

The differences between the two middle schools are not as substantial as those for the elementary schools. For the racial/ethnic composition, the differences range from 1.4 percent in the Black or African American population to 3.9 percent in the Asian population. The FARMS participation difference is 11.5 percent, while the ESOL population differs by 3.3 percent.

The following is a summary of the three options by school, beginning with the elementary schools, followed by the middle schools.

Forest Knolls Elementary School

- The utilization rate for Forest Knolls Elementary School is projected to be in the range of 136 to 147 percent.

Option 1

- Proposes to reassign Zones F3 and F4 from Forest Knolls Elementary School to Montgomery Knolls and Pine Crest elementary schools.
- Provides for a contiguous service area for the school.
- Utilization rate would range from 101 to 106 percent when fully implemented.

- The demographic changes would range from a decrease of 4.3 percent in the White population to an increase of 4.0 percent in the FARMS population.

Option 2

- Proposes to reassign Zones F2, F3, and F5 from Forest Knolls Elementary School to Montgomery Knolls and Pine Crest elementary schools.
- Provides for a noncontiguous service area for the school.
- Reassigns more students compared to Option 1.
- Utilization rate would range from 97 to 102 percent.
- The demographic changes would range from a decrease of 2.1 percent in the ESOL population to an increase of 1.8 percent in the FARMS population.

Option 3

- Proposes to reassign F2 and F4 from Forest Knolls Elementary School to Montgomery Knolls and Pine Crest elementary schools.
- Provides for a contiguous service area.
- Reassigns the greatest number of students of the three options.
- Utilization rate would range from 87 to 93 percent.
- The demographic changes would range from a decrease of 2.8 in the White population to an increase of 2.4 percent in the FARMS population.

Montgomery Knolls and Pine Crest Elementary Schools

- With the additions opening at these schools in the 2020–2021 school year, the utilization rate for Montgomery Knolls Elementary School is projected to be approximately 69 percent through the six-year period, and at Pine Crest Elementary School, it will range from 72 to 78 percent for the planning period.

Option 1

- Proposes to reassign Zones F3 and F4 from Forest Knolls Elementary School to Montgomery Knolls and Pine Crest elementary schools.
- Provides for a contiguous service area for both of these schools.
- Utilization rate would range from 81 to 84 percent for Montgomery Knolls Elementary School and a range of 83 to 97 percent for Pine Crest Elementary School.
- The demographic changes would range from a decrease of 6.0 percent and a decrease of 4.7 percent in the FARMS population to an increase of 6.1 percent and an increase of 2.2 percent in the White population for Montgomery Knolls and Pine Crest elementary schools, respectively.

Option 2

- Proposes to reassign Zones F2, F3 and F5 from Forest Knolls Elementary School to Montgomery Knolls and Pine Crest elementary schools.
- Provides for a non-contiguous service area for both schools.
- Reassigns more students compared to Option 1.
- Utilization rate would range from 84 to 86 percent for Montgomery Knolls Elementary School, and a range of 89 to 99 percent at Pine Crest Elementary School.

- The demographic changes would range from a decrease of 6.3 percent and a decrease of 2.8 percent in the FARMS population to an increase of 3.7 percent and an increase of 0.9 percent in the White population for Montgomery Knolls and Pine Crest elementary schools, respectively.

Option 3

- Proposes to reassign Zones F2 and F4 from Forest Knolls Elementary School to Montgomery Knolls and Pine Crest elementary schools.
- Provides for a contiguous service area for both schools.
- Reassigns the greatest number of students of the three options.
- Utilization rate would range from 84 to 86 percent at Montgomery Knolls Elementary School and a range of 93 to 102 percent at Pine Crest Elementary School.
- The demographic changes would range from a decrease of 7.0 percent and a decrease of 4.2 percent in the FARMS population to an increase of 5.7 percent and an increase of 1.9 percent in the White population for Montgomery Knolls and Pine Crest elementary schools, respectively.

Eastern Middle School

Option 1

- Proposes to reassign Zones F3 and F4 from Silver Spring International Middle School to Eastern Middle School.
- Provides for a contiguous service area.
- Utilization rate would range from 100 to 108 percent.
- The demographic changes would range from a decrease of 2.2 percent in the FARMS population to an increase of 1.5 percent in the White population.

Option 2

- Proposes to reassign Zones F2, F3, and F5 from Silver Spring International Middle School to Eastern Middle School.
- Provides for a non-contiguous service area.
- Utilization rate would range from 100 to 110 percent.
- The demographic changes would range from a decrease of 1.6 percent in the FARMS population to an increase of .9 percent in the White population.

Option 3

- Proposes to reassign Zones F2 and F4 from Silver Spring International Middle School to Eastern Middle School.
- Provides for a contiguous service area.
- Utilization rate would range from 100 to 109 percent.
- The demographic changes would range from a decrease of 2.4 percent in the FARMS population to an increase of 1.2 percent in the White population.

Silver Spring International Middle School

Option 1

- Proposes to reassign Zones F3 and F4 from Silver Spring International Middle School to Eastern Middle School.
- Provides for a contiguous service area.
- Utilization rate would range from 80 to 86 percent.
- The demographic changes would range from an increase of 1.7 percent in the FARMS population and an increase of .8 percent in the White population.

Option 2

- Proposes to reassign Zones F2, F3, and F5 from Silver Spring International Middle School to Eastern Middle School.
- Provides for a non-contiguous service area.
- Utilization rate would range from 79 to 85 percent.
- The demographic changes would range from an increase of 1.0 percent in the FARMS population to a decrease of 0.1 percent in the White population.

Option 3

- Proposes to reassign Zones F2 and F4 from Silver Spring International Middle School to Eastern Middle School.
- Provides for a contiguous service area.
- Utilization rate would range from 80 to 87 percent.
- The demographic changes would range from an increase of 1.7 percent in the FARMS population to a decrease of 0.3 percent in the White population.

Superintendent's Recommendation

I commend the work of the staff and community involved in this boundary study process. The stakeholder input was helpful and provided me with valuable information to consider as I developed my recommendation. Based on recent revisions to Board of Education Policy FAA, *Educational Facilities Planning*, this study was conducted to allow for extensive community engagement throughout the entire process. I believe that this new process broadened the opportunities for stakeholder engagement and for input to inform not only my recommendation, but the process going forward through the Board of Education's deliberations as well.

I carefully reviewed the options that staff developed, along with revised student enrollment projections, survey data, and e-mail communications from stakeholders within the context of the three policy factors outlined in Board of Education Policy FAA, *Educational Facilities Planning*, and MCPS Regulation FAA-RA, *Educational Facilities Planning*, to develop my recommendation. These factors include:

- Demographic characteristics of student population;
- Geography; and
- Facility utilization.

After review of all the information, I recommend Option 1, as I believe it most advances the three policy factors. My recommendation provides the needed space relief for Forest Knolls Elementary School, creates contiguous boundaries for the three elementary schools, and ensures that current walkers are not reassigned. This recommended option reassigns the portions of the Forest Knolls service area closest to Montgomery Knolls and Pine Crest elementary schools.

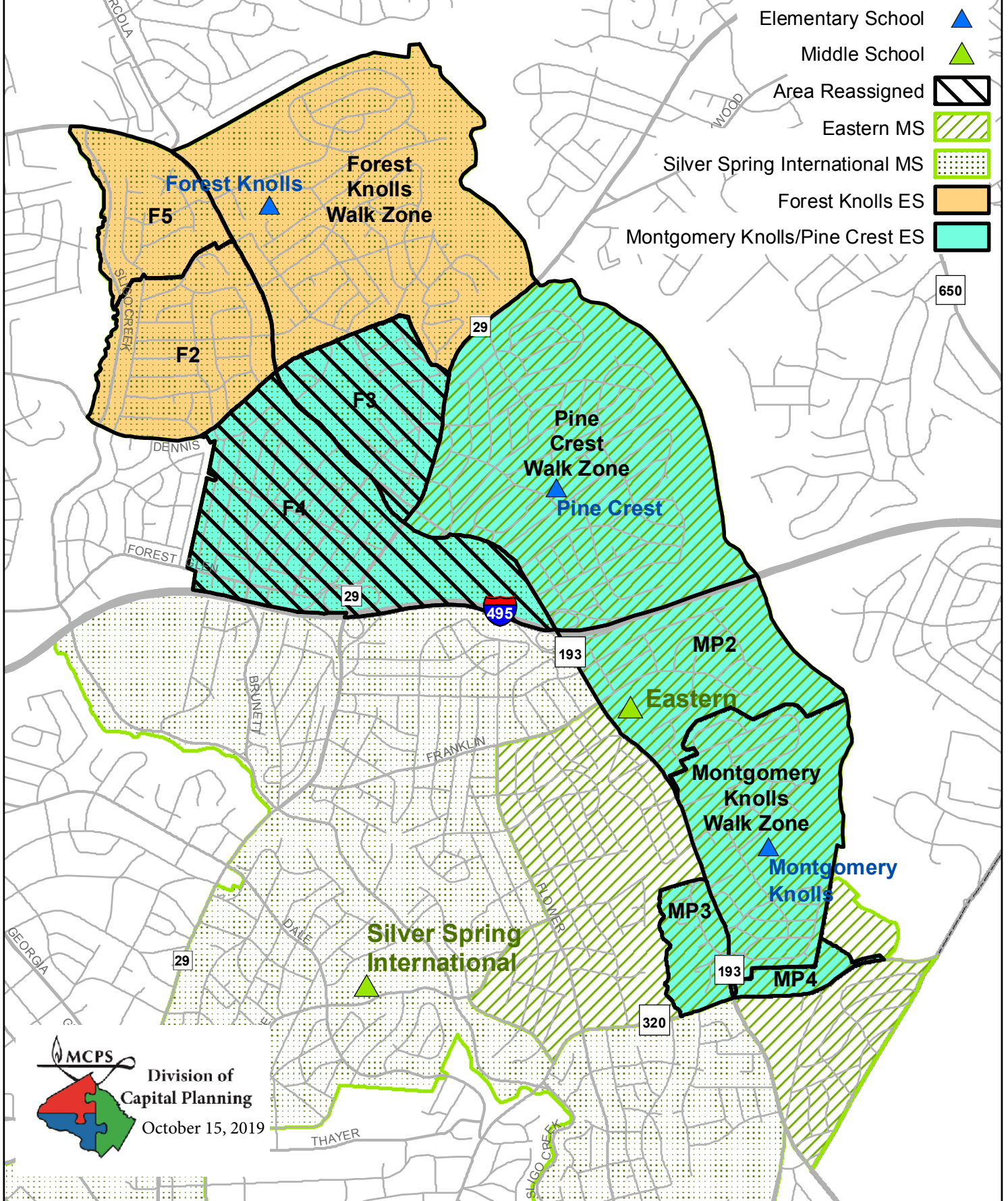
With regard to the demographic profiles of the schools, my recommendation reduces the disparity of the FARMS participation between Forest Knolls Elementary School, Montgomery Knolls Elementary School, and Pine Crest Elementary School from 28.7 percent to 18.7 percent. The FARMS participation would increase at Forest Knolls Elementary School from 30.1 to 34.1 percent and decrease from 58.8 to 52.8 percent at Montgomery Knolls Elementary School, as well as decrease from 47.4 to 42.7 at Pine Crest Elementary School. With respect to the racial/ethnic student population, my recommendation will provide for more comparability among the three elementary schools than the current racial/ethnic composition of the three schools.

At the middle school level, after careful consideration of the three policy factors and feedback from stakeholders, my recommendation is to maintain the current middle school assignments for Forest Knolls, Montgomery Knolls, and Pine Crest elementary schools.

Summary

Addressing the space needs for elementary schools while creating diverse student bodies and ensuring that students attend schools close to their home, is a complex goal. Board of Education Policy FAA, *Educational Facilities Planning*, provides a framework to ensure that stakeholders are provided an opportunity to share their input to inform my recommendation and that the Board of Education can make a final decision. Based on this input, I believe that my recommendation has addressed the goals to create school boundaries to advance the factors in Board of Education Policy FAA, *Educational Facilities Planning*.

Forest Knolls, Montgomery Knolls, and Pine Crest Elementary Schools Boundary Study Superintendent's Recommendation



Superintendent's Recommendation

Forest Knolls, Montgomery Knolls, and Pine Crest Elementary Schools Boundary Study

October 15, 2019

Recommended Elementary School Reassignments

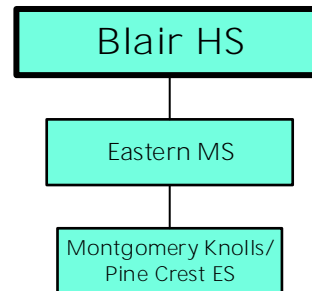
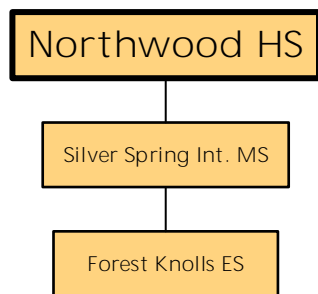
Reassign Zones F3 and F4 from Forest Knolls ES to Montgomery Knolls ES and Pine Crest ES

Recommended Elementary School Boundary Reassignments

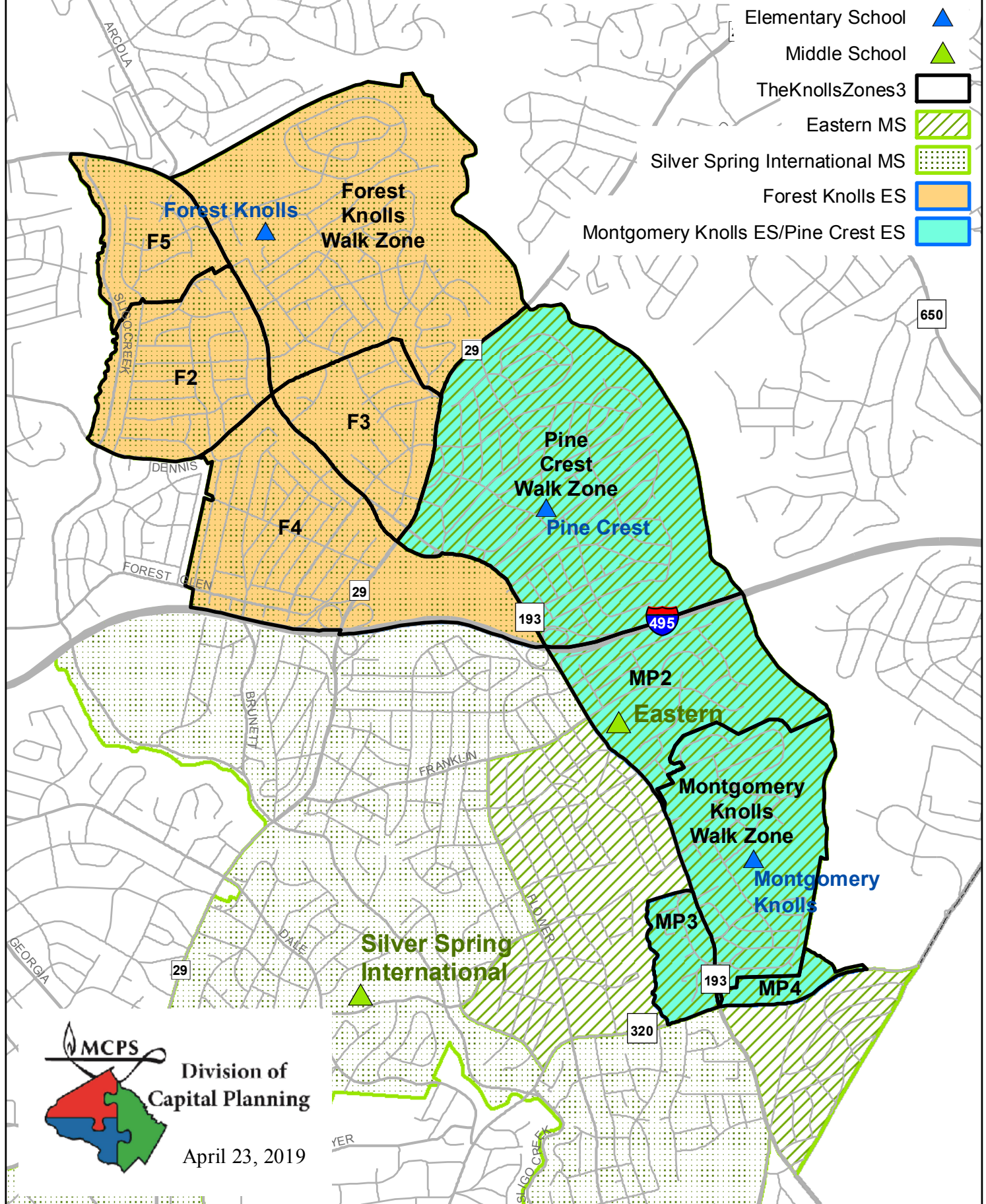
School	Projected Number of Students						2019–20					2018–19	
							Race/Ethnic Composition						
	2020–21	2021–22	2022–23	2023–24	2024–25	2025–26	% Afr. Amer.	% Asian	% Hispanic	% White	% 2 or More	% FARMS	% ESOL
Forest Knolls ES													
Maximum Number of Seats= 529													
<u>No Change:</u>													
Number of Students	747	758	761	739	742	715	14.7%	4.9%	38.4%	33.5%	7.9%	30.1%	19.0%
Percent of Building Occupied	141%	143%	144%	140%	140%	135%							
Available Seats	-218	-229	-232	-210	-213	-186							
<u>With Change:</u>													
Number of Students	621	570	560	540	525	498	16.3%	4.8%	41.2%	29.6%	8.1%	34.1%	19.4%
Percent of Building Occupied	117%	108%	106%	102%	99%	94%							
Available Seats	-92	-41	-31	-11	4	31							
Montgomery Knolls ES													
Maximum Number of Seats= 681													
<u>No Change:</u>													
Number of Students	479	469	467	458	456	453	29.3%	4.5%	47.4%	15.0%	3.8%	58.8%	42.1%
Percent of Building Occupied	70%	69%	69%	67%	67%	67%							
Available Seats	202	212	214	223	225	228							
<u>With Change:</u>													
Number of Students	540	570	567	556	553	550	25.5%	5.0%	43.4%	21.6%	4.5%	52.8%	37.4%
Percent of Building Occupied	79%	84%	83%	82%	81%	81%							
Available Seats	141	111	114	125	128	131							
Pine Crest ES													
Maximum Number of Seats= 634													
<u>No Change:</u>													
Number of Students	387	407	412	423	406	406	24.9%	4.4%	41.4%	23.5%	5.8%	47.4%	31.7%
Percent of Building Occupied	61%	64%	65%	67%	64%	64%							
Available Seats	247	227	222	211	228	228							
<u>With Change:</u>													
Number of Students	452	495	514	524	526	526	22.9%	4.2%	40.8%	26.0%	6.2%	42.7%	30.5%
Percent of Building Occupied	71%	78%	81%	83%	83%	83%							
Available Seats	182	139	120	110	108	108							

Notes: In the 2020–2021 school year, the enrollment projections display reassignments for students in Grades 3–4 from Forest Knolls ES to Pine Crest ES. Grade 5 students would be grandfathered at their current school assignment. Grade 2 students would also be grandfathered at Forest Knolls ES in 2020–2021 school year, but would attend Pine Crest ES beginning the 2021–2022 school year. For the 2021–2022 school year, the data displays Grades 3–5 at Pine Crest ES, and Grades PreK–2 at Montgomery Knolls ES.

Current Articulations



Forest Knolls, Montgomery Knolls, and Pine Crest Elementary Schools Boundary Study

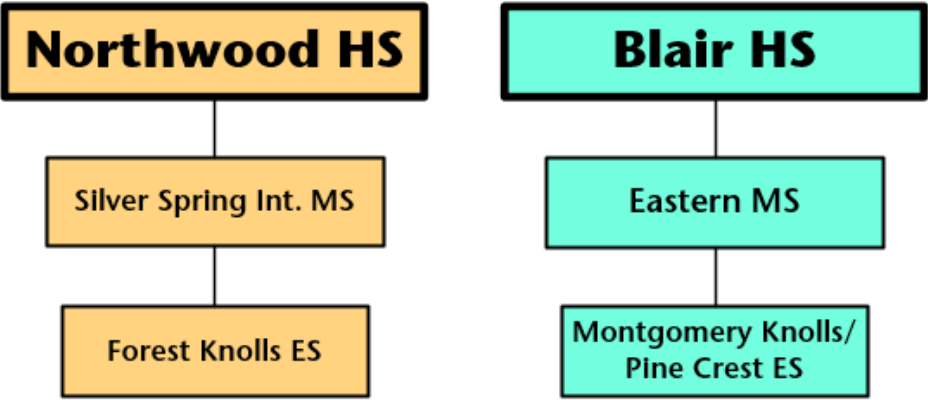


Forest Knolls, Montgomery Knolls, and Pine Crest Elementary Schools Boundary Study

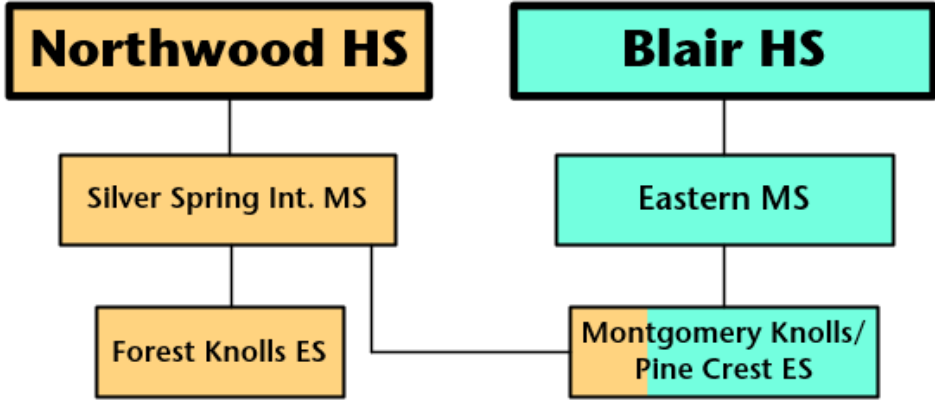
April 2019

Option #1	<p><u>Proposed Elementary School Reassignments</u> Reassign Zones F3 and F4 from Forest Knolls ES to Montgomery Knolls ES and Pine Crest ES</p> <p><u>Proposed Middle School Reassignments</u> Reassign Zones F3 and F4 from Silver Spring International MS to Eastern MS</p>
Option #2	<p><u>Proposed Elementary School Reassignments</u> Reassign Zones F2, F3, and F5 from Forest Knolls ES to Montgomery Knolls ES and Pine Crest ES</p> <p><u>Proposed Middle School Reassignments</u> Reassign Zones F2, F3, and F5 from Silver Spring International MS to Eastern MS</p>
Option #3	<p><u>Proposed Elementary School Reassignments</u> Reassign the Southern portion of Zone F2 and F4 from Forest Knolls ES to Montgomery Knolls ES and Pine Crest ES</p> <p><u>Proposed Middle School Reassignments</u> Reassign the souther portion of Zone F2 and F4 from Silver Spring International MS to Eastern MS</p>

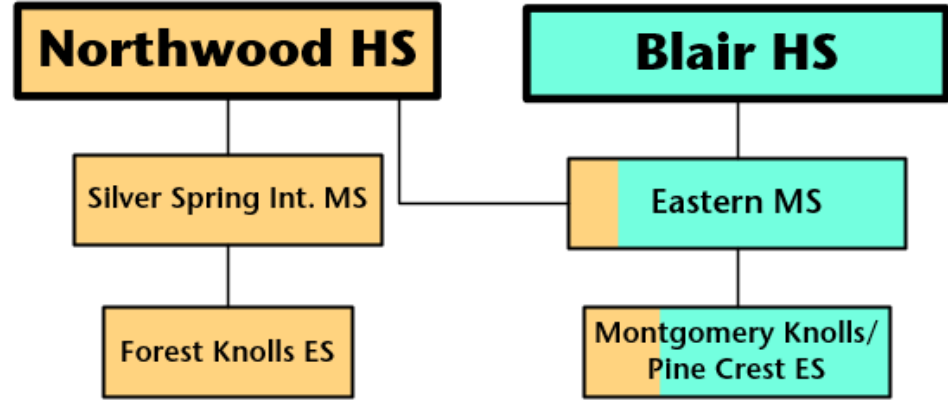
Current Articulations



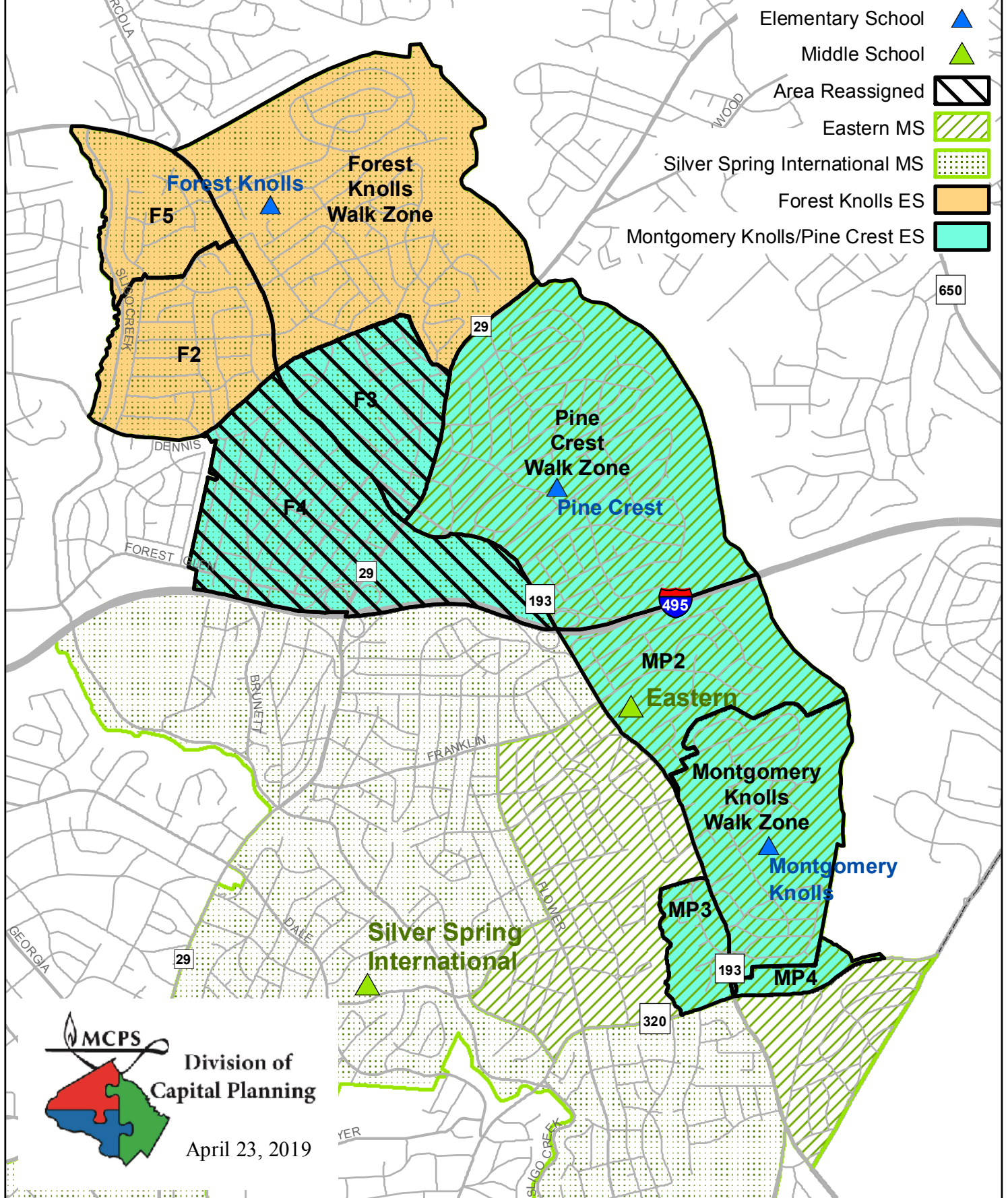
No Change in MS Assignment



Change in MS Assignment



Forest Knolls, Montgomery Knolls, and Pine Crest Elementary Schools Boundary Study Option 1



Option #1

Forest Knolls, Montgomery Knolls, and Pine Crest Elementary Schools Boundary Study

April 2019

Proposed Elementary School Reassignments

Reassign Zones F3 and F4 from Forest Knolls ES to Montgomery Knolls ES and Pine Crest ES

Proposed Middle School Reassignments

Reassign Zones F3 and F4 from Silver Spring International MS to Eastern MS

Proposed Elementary School Boundary Reassignments

School	Projected Number of Students					2018-19 Race/Ethnic Composition						
	2020-21	2021-22	2022-23	2023-24	2024-25	% Afr. Amer.	% Asian	% Hispanic	% White	% 2 or More	% FARMS	% ESOL
Forest Knolls ES												
Maximum Number of Seats= 529												
No Change:												
Number of Students	736	720	733	756	775	14.8%	5.4%	38.7%	33.4%	7.4%	30.1%	19.0%
Percent of Building Occupied	139%	136%	139%	143%	147%							
Available Seats	-207	-191	-204	-227	-246							
With Change:												
Number of Students	588	532	532	557	558	16.6%	5.4%	41.7%	29.1%	7.3%	34.1%	19.4%
Percent of Building Occupied	111%	101%	100%	105%	106%							
Available Seats	-59	-3	-3	-28	-29							
Montgomery Knolls ES												
Maximum Number of Seats= 681												
No Change:												
Number of Students	469	472	473	469	468	26.6%	3.5%	46.6%	17.2%	5.9%	58.8%	42.1%
Percent of Building Occupied	69%	69%	69%	69%	69%							
Available Seats	212	209	208	212	213							
With Change:												
Number of Students	552	573	573	567	565	23.4%	4.1%	42.9%	23.3%	6.2%	52.8%	37.4%
Percent of Building Occupied	81%	84%	84%	83%	83%							
Available Seats	129	108	108	114	116							
Pine Crest ES												
Maximum Number of Seats= 634												
No Change:												
Number of Students	458	465	473	481	493	24.4%	5.7%	41.4%	24.8%	3.7%	47.4%	31.7%
Percent of Building Occupied	72%	73%	75%	76%	78%							
Available Seats	176	169	161	153	141							
With Change:												
Number of Students	524	552	575	583	613	22.5%	5.3%	40.8%	27.0%	4.4%	42.7%	30.5%
Percent of Building Occupied	83%	87%	91%	92%	97%							
Available Seats	110	82	59	51	21							

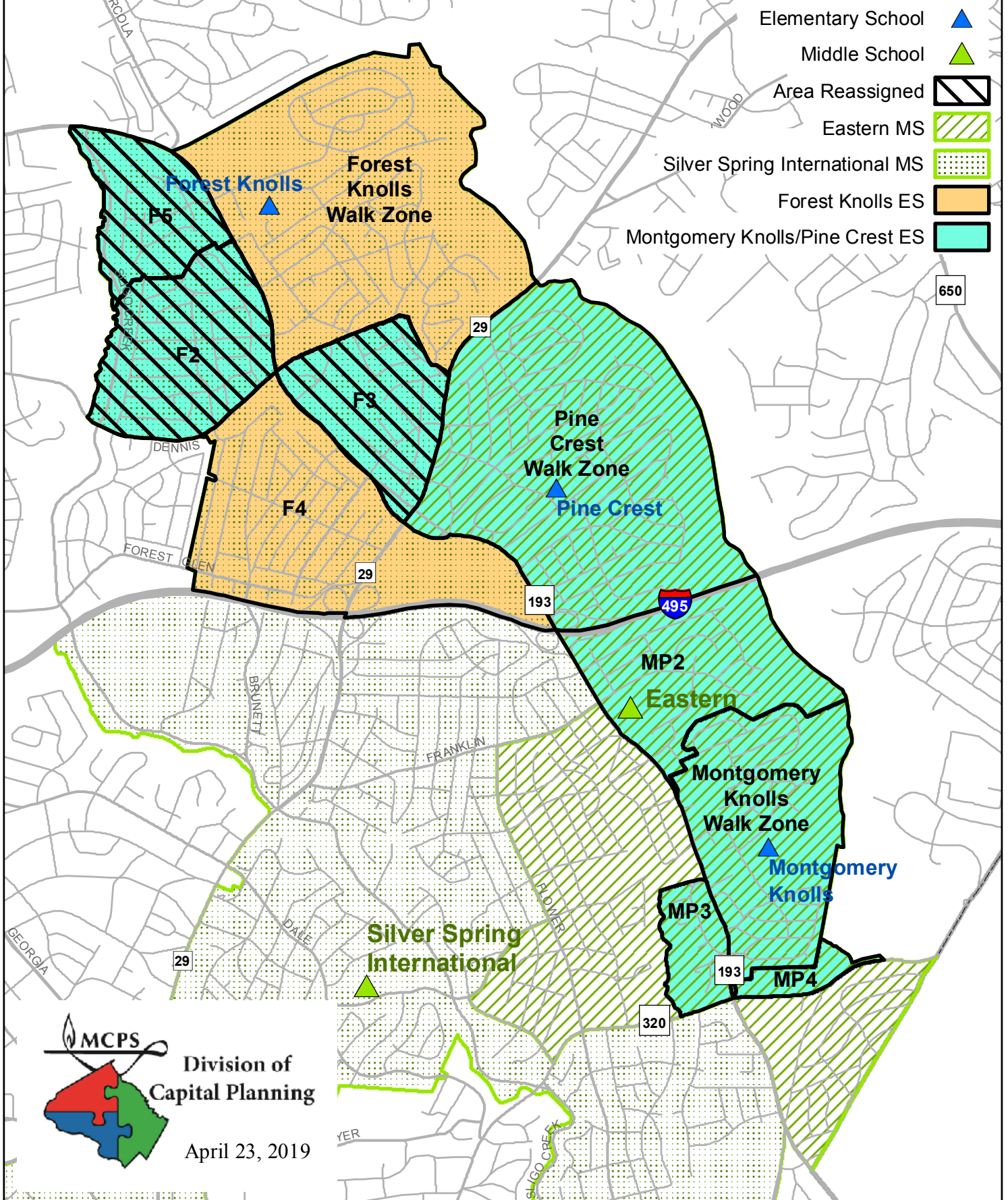
Notes: In the 2020-2021 school year, the enrollment projections display reassignments for students in Grades 3-4 from Forest Knolls ES to Pine Crest ES. Grade 5 students would be grandfathered at their current school assignment. For the 2021-2022 school year, the data displays Grades 3-5 at Pine Crest ES.

Proposed Middle School Boundary Reassignments

Eastern MS												
Maximum Number of Seats= 1,012												
No Change:												
Number of Students	936	965	973	967	960	19.8%	9.3%	46.7%	20.3%	3.6%	49.8%	17.7%
Percent of Building Occupied	92%	95%	96%	96%	95%							
Available Seats	76	47	39	45	52							
With Change:												
Number of Students	1,014	1,079	1,096	1,100	1,096	19.1%	9.1%	45.9%	21.8%	4.0%	47.6%	16.8%
Percent of Building Occupied	100%	107%	108%	109%	108%							
Available Seats	-2	-67	-84	-88	-84							
Silver Spring International MS												
Maximum Number of Seats= 1,298												
No Change:												
Number of Students	1,134	1,147	1,185	1,207	1,252	21.2%	5.4%	41.5%	26.9%	4.4%	38.3%	14.4%
Percent of Building Occupied	87%	88%	91%	93%	96%							
Available Seats	164	151	113	91	46							
With Change:												
Number of Students	1,056	1,033	1,062	1,074	1,116	22.2%	5.4%	42.2%	26.1%	4.1%	40.0%	15.2%
Percent of Building Occupied	81%	80%	82%	83%	86%							
Available Seats	242	265	236	224	182							

Note: In the 2020-2021 school year, the enrollment projections display reassignments for students in Grades 6 and 7 students from Silver Spring International MS to Eastern MS with Grade 8 students grandfathered at Silver Spring International MS. In the 2021-2022 the data displays all Grade 6-8 students reassignments.

Forest Knolls, Montgomery Knolls, and Pine Crest Elementary Schools Boundary Study Option 2



Option #2

Forest Knolls, Montgomery Knolls, and Pine Crest Elementary Schools Boundary Study

April 2019

Proposed Elementary School Reassignments

Reassign Zones F2, F3, and F5 from Forest Knolls ES to Montgomery Knolls ES and Pine Crest ES

Proposed Middle School Reassignments

Reassign Zones F2, F3, and F5 from Silver Spring International MS to Eastern MS

Proposed Elementary School Boundary Reassignments

School	Projected Number of Students					2018-19 Race/Ethnic Composition						
	2020-21	2021-22	2022-23	2023-24	2024-25	% Afr. Amer.	% Asian	% Hispanic	% White	% 2 or More	% FARMS	% ESOL
Forest Knolls ES												
Maximum Number of Seats= 529												
<u>No Change:</u>												
Number of Students	736	720	733	756	775	14.8%	5.4%	38.7%	33.4%	7.4%	30.1%	19.0%
Percent of Building Occupied	139%	136%	139%	143%	147%							
Available Seats	-207	-191	-204	-227	-246							
<u>With Change:</u>												
Number of Students	569	511	517	540	539	14.6%	6.1%	38.8%	33.2%	7.3%	31.9%	16.9%
Percent of Building Occupied	108%	97%	98%	102%	102%							
Available Seats	-40	18	12	-11	-10							
Montgomery Knolls ES												
Maximum Number of Seats= 681												
<u>No Change:</u>												
Number of Students	469	472	473	469	468	26.6%	3.5%	46.6%	17.2%	5.9%	58.8%	42.1%
Percent of Building Occupied	69%	69%	69%	69%	69%							
Available Seats	212	209	208	212	213							
<u>With Change:</u>												
Number of Students	560	583	578	573	571	24.2%	3.5%	45.1%	20.9%	6.3%	52.5%	39.9%
Percent of Building Occupied	82%	86%	85%	84%	84%							
Available Seats	121	98	104	108	110							
Pine Crest ES												
Maximum Number of Seats= 634												
<u>No Change:</u>												
Number of Students	458	465	473	481	493	24.4%	5.7%	41.4%	24.8%	3.7%	47.4%	31.7%
Percent of Building Occupied	72%	73%	75%	76%	78%							
Available Seats	176	169	161	153	141							
<u>With Change:</u>												
Number of Students	534	563	584	593	626	23.4%	5.3%	41.2%	25.7%	4.3%	44.6%	29.7%
Percent of Building Occupied	84%	89%	92%	94%	99%							
Available Seats	100	71	50	41	8							

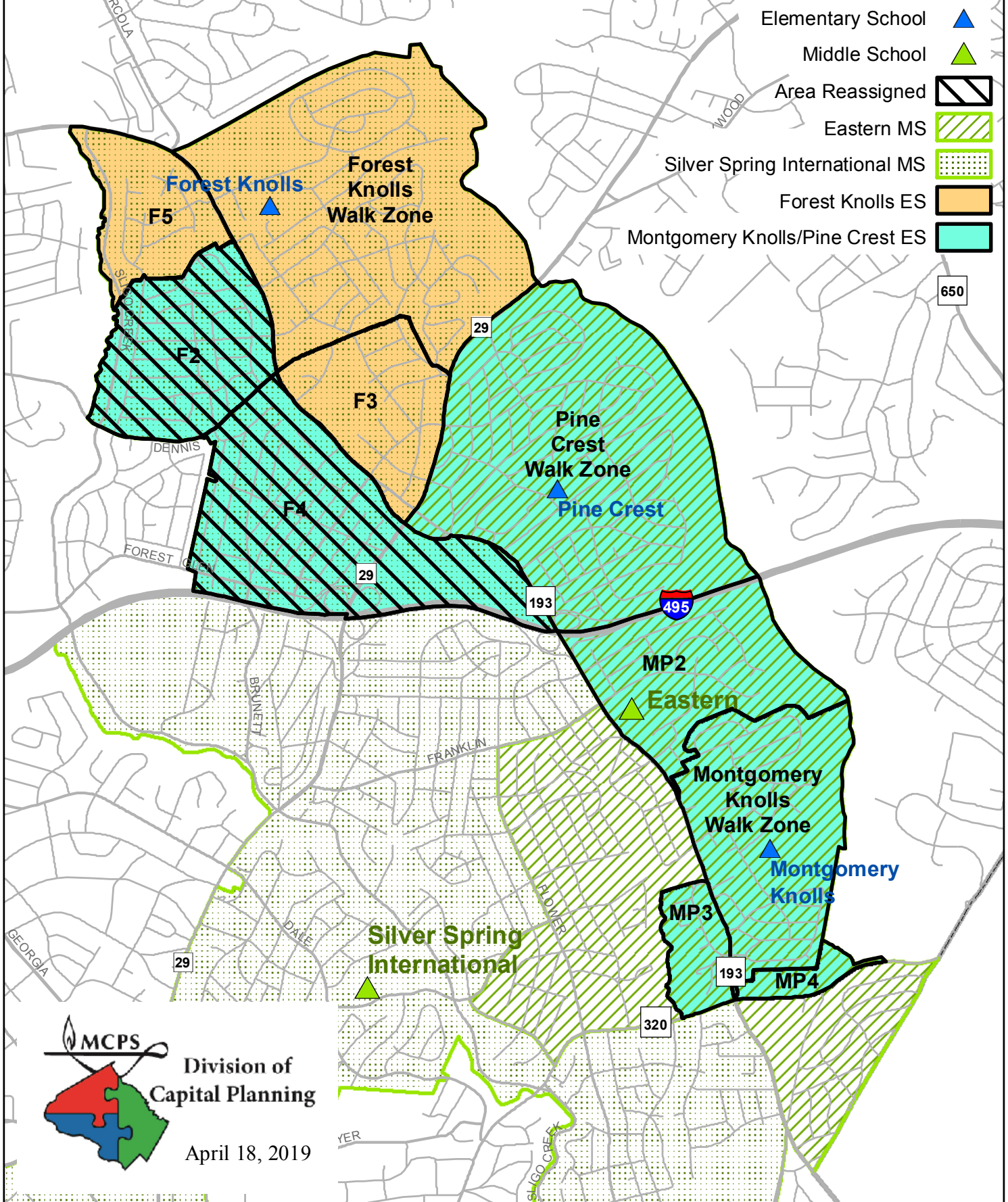
Notes: In the 2020-2021 school year, the enrollment projections display reassignments for students in Grades 3-4 from Forest Knolls ES to Pine Crest ES. Grade 5 students would be grandfathered at their current school assignment. For the 2021-2022 school year, the data displays Grades 3-5 at Pine Crest ES.

Proposed Middle School Boundary Reassignments

Eastern MS												
Maximum Number of Seats= 1,012												
<u>No Change:</u>												
Number of Students	936	965	973	967	960	19.8%	9.3%	46.7%	20.3%	3.6%	49.8%	17.7%
Percent of Building Occupied	92%	95%	96%	96%	95%							
Available Seats	76	47	39	45	52							
<u>With Change:</u>												
Number of Students	1,016	1,082	1,109	1,113	1,106	19.3%	9.1%	46.8%	21.2%	3.6%	48.2%	16.9%
Percent of Building Occupied	100%	107%	110%	110%	109%							
Available Seats	-4	-70	-97	-101	-94							
Silver Spring International MS												
Maximum Number of Seats= 1,298												
<u>No Change:</u>												
Number of Students	1,134	1,147	1,185	1,207	1,252	21.2%	5.4%	41.5%	26.9%	4.4%	38.3%	14.4%
Percent of Building Occupied	87%	88%	91%	93%	96%							
Available Seats	164	151	113	91	46							
<u>With Change:</u>												
Number of Students	1,054	1,030	1,049	1,061	1,106	22.0%	5.3%	41.3%	26.8%	4.6%	39.3%	15.1%
Percent of Building Occupied	81%	79%	81%	82%	85%							
Available Seats	244	268	249	237	192							

Note: In the 2020-2021 school year, the enrollment projections display reassignments for students in Grades 6 and 7 students from Silver Spring International MS to Eastern MS with Grade 8 students grandfathered at Silver Spring International MS. In the 2021-2022 the data displays all Grade 6-8 students reassignments.

Forest Knolls, Montgomery Knolls, and Pine Crest Elementary Schools Boundary Study Option 3



Option #3

Forest Knolls, Montgomery Knolls, and Pine Crest Elementary Schools Boundary Study

April 2019

Proposed Elementary School Reassignments

Reassign the Southern portion of Zone F2 and F4 from Forest Knolls ES to Montgomery Knolls ES and Pine Crest ES

Proposed Middle School Reassignments

Reassign the southern portion of Zone F2 and F4 from Silver Spring International MS to Eastern MS

Proposed Elementary School Boundary Reassignments

School	Projected Number of Students					2018-19 Race/Ethnic Composition						
	2020-21	2021-22	2022-23	2023-24	2024-25	% Afr. Amer.	% Asian	% Hispanic	% White	% 2 or More	% FARMS	% ESOL
Forest Knolls ES												
Maximum Number of Seats= 529												
<u>No Change:</u>												
Number of Students	736	720	733	756	775	14.8%	5.4%	38.7%	33.4%	7.4%	30.1%	19.0%
Percent of Building Occupied	139%	136%	139%	143%	147%							
Available Seats	-207	-191	-204	-227	-246							
<u>With Change:</u>												
Number of Students	527	460	467	490	493	16.3%	6.0%	40.0%	30.6%	7.1%	32.5%	18.6%
Percent of Building Occupied	100%	87%	88%	93%	93%							
Available Seats	2	69	62	39	36							
Montgomery Knolls ES												
Maximum Number of Seats= 681												
<u>No Change:</u>												
Number of Students	469	472	473	469	468	26.6%	3.5%	46.6%	17.2%	5.9%	58.8%	42.1%
Percent of Building Occupied	69%	69%	69%	69%	69%							
Available Seats	212	209	208	212	213							
<u>With Change:</u>												
Number of Students	585	606	605	599	596	23.4%	3.5%	43.9%	22.9%	6.3%	51.8%	36.9%
Percent of Building Occupied	86%	89%	89%	88%	88%							
Available Seats	96	75	76	82	85							
Pine Crest ES												
Maximum Number of Seats= 634												
<u>No Change:</u>												
Number of Students	458	465	473	481	493	24.4%	5.7%	41.4%	24.8%	3.7%	47.4%	31.7%
Percent of Building Occupied	72%	73%	75%	76%	78%							
Available Seats	176	169	161	153	141							
<u>With Change:</u>												
Number of Students	551	591	607	617	647	22.0%	5.6%	41.1%	26.7%	4.7%	43.2%	29.7%
Percent of Building Occupied	87%	93%	96%	97%	102%							
Available Seats	83	43	27	17	-13							

Notes: In the 2020-2021 school year, the enrollment projections display reassignments for students in Grades 3-4 from Forest Knolls ES to Pine Crest ES. Grade 5 students would be grandfathered at their current school assignment. For the 2021-2022 school year, the data displays Grades 3-5 at Pine Crest ES.

Proposed Middle School Boundary Reassignments

Eastern MS												
Maximum Number of Seats= 1,012												
<u>No Change:</u>												
Number of Students	936	965	973	967	960	19.8%	9.3%	46.7%	20.3%	3.6%	49.8%	17.7%
Percent of Building Occupied	92%	95%	96%	96%	95%							
Available Seats	76	47	39	45	52							
<u>With Change:</u>												
Number of Students	1,008	1,079	1,097	1,102	1,087	19.5%	9.1%	46.2%	21.5%	3.7%	47.4%	16.6%
Percent of Building Occupied	100%	107%	108%	109%	107%							
Available Seats	4	-67	-85	-90	-75							
Silver Spring International MS												
Maximum Number of Seats= 1,298												
<u>No Change:</u>												
Number of Students	1,134	1,147	1,185	1,207	1,252	21.2%	5.4%	41.5%	26.9%	4.4%	38.3%	14.4%
Percent of Building Occupied	87%	88%	91%	93%	96%							
Available Seats	164	151	113	91	46							
<u>With Change:</u>												
Number of Students	1,062	1,033	1,061	1,072	1,125	21.9%	5.3%	41.9%	26.6%	4.4%	40.0%	15.4%
Percent of Building Occupied	82%	80%	82%	83%	87%							
Available Seats	236	265	237	226	173							

Note: In the 2020-2021 school year, the enrollment projections display reassignments for students in Grades 6 and 7 students from Silver Spring International MS to Eastern MS with Grade 8 students grandfathered at Silver Spring International MS. In the 2021-2022 the data displays all Grade 6-8 students reassignments.

Summary of Options by School
Forest Knolls, Montgomery Knolls, and Pine Crest Elementary Schools Boundary Study
April 2019

School	Projected Number of Students					2018–19 Race/Ethnic Composition						
	2020–21	2021–22	2022–23	2023–24	2024–25	% Afr. Amer.	% Asian	% Hispanic	% White	% 2 or More	% FARMS	% ESOL
	Forest Knolls ES											
Maximum Number of Seats= 529												
<u>Current Boundaries</u>												
Number of Students	736	720	733	756	775	14.8%	5.4%	38.7%	33.4%	7.4%	30.1%	19.0%
Percent of Building Occupied	139%	136%	139%	143%	147%							
Available Seats	-207	-191	-204	-227	-246							
<u>Option 1</u>												
Number of Students	588	532	532	557	558	16.6%	5.4%	41.7%	29.1%	7.3%	34.1%	19.4%
Percent of Building Occupied	111%	101%	100%	105%	106%							
Available Seats	-59	-3	-3	-28	-29							
<u>Option 2</u>												
Number of Students	569	511	517	540	539	14.6%	6.1%	38.8%	33.2%	7.3%	31.9%	16.9%
Percent of Building Occupied	108%	97%	98%	102%	102%							
Available Seats	-40	18	12	-11	-10							
<u>Option 3</u>												
Number of Students	527	460	467	490	493	16.3%	6.0%	40.0%	30.6%	7.1%	32.5%	18.6%
Percent of Building Occupied	100%	87%	88%	93%	93%							
Available Seats	2	69	62	39	36							
Montgomery Knolls ES												
Maximum Number of Seats= 681												
<u>Current Boundaries</u>												
Number of Students	469	472	473	469	468	26.6%	3.5%	46.6%	17.2%	5.9%	58.8%	42.1%
Percent of Building Occupied	69%	69%	69%	69%	69%							
Available Seats	212	209	208	212	213							
<u>Option 1</u>												
Number of Students	552	573	573	567	565	23.4%	4.1%	42.9%	23.3%	6.2%	52.8%	37.4%
Percent of Building Occupied	81%	84%	84%	83%	83%							
Available Seats	129	108	108	114	116							
<u>Option 2</u>												
Number of Students	560	583	578	573	571	24.2%	3.5%	45.1%	20.9%	6.3%	52.5%	39.9%
Percent of Building Occupied	82%	86%	85%	84%	84%							
Available Seats	121	98	104	108	110							
<u>Option 3</u>												
Number of Students	585	606	605	599	596	23.4%	3.5%	43.9%	22.9%	6.3%	51.8%	36.9%
Percent of Building Occupied	86%	89%	89%	88%	88%							
Available Seats	96	75	76	82	85							
Pine Crest ES												
Maximum Number of Seats= 634												
<u>Current Boundaries</u>												
Number of Students	458	465	473	481	493	24.4%	5.7%	41.4%	24.8%	3.7%	47.4%	31.7%
Percent of Building Occupied	72%	73%	75%	76%	78%							
Available Seats	176	169	161	153	141							
<u>Option 1</u>												
Number of Students	524	552	575	583	613	22.5%	5.3%	40.8%	27.0%	4.4%	42.7%	30.5%
Percent of Building Occupied	83%	87%	91%	92%	97%							
Available Seats	110	82	59	51	21							
<u>Option 2</u>												
Number of Students	534	563	584	593	626	23.4%	5.3%	41.2%	25.7%	4.3%	44.6%	29.7%
Percent of Building Occupied	84%	89%	92%	94%	99%							
Available Seats	100	71	50	41	8							
<u>Option 3</u>												
Number of Students	551	591	607	617	647	22.0%	5.6%	41.1%	26.7%	4.7%	43.2%	29.7%
Percent of Building Occupied	87%	93%	96%	97%	102%							
Available Seats	83	43	27	17	-13							

Notes: In the 2020–2021 school year, the enrollment projections display reassignments for students in Grades 3–4 from Forest Knolls ES to Pine Crest ES. Grade 5 students would be grandfathered at their current school assignment. For the 2021–2022 school year, the data displays Grades 3–5 at Pine Crest ES.

School						2018–19						
	Projected Number of Students					Race/Ethnic Composition						
	2020–21	2021–22	2022–23	2023–24	2024–25	% Afr. Amer.	% Asian	% Hispanic	% White	% 2 or More	% FARMS	% ESOL
Eastern MS												
Maximum Number of Seats= 1,012												
<u>Current Boundaries</u>												
Number of Students	936	965	973	967	960	19.8%	9.3%	46.7%	20.3%	3.6%	49.8%	17.7%
Percent of Building Occupied	92%	95%	96%	96%	95%							
Available Seats	76	47	39	45	52							
<u>Option 1</u>												
Number of Students	1,014	1,079	1,096	1,100	1,096	19.1%	9.1%	45.9%	21.8%	4.0%	47.6%	16.8%
Percent of Building Occupied	100%	107%	108%	109%	108%							
Available Seats	-2	-67	-84	-88	-84							
<u>Option 2</u>												
Number of Students	1,016	1,082	1,109	1,113	1,106	19.3%	9.1%	46.8%	21.2%	3.6%	48.2%	16.9%
Percent of Building Occupied	100%	107%	110%	110%	109%							
Available Seats	-4	-70	-97	-101	-94							
<u>Option 3</u>												
Number of Students	1,008	1,079	1,097	1,102	1,087	19.5%	9.1%	46.2%	21.5%	3.7%	47.4%	16.6%
Percent of Building Occupied	100%	107%	108%	109%	107%							
Available Seats	4	-67	-85	-90	-75							
Silver Spring International Middle School												
Maximum Number of Seats= 1,298												
<u>Current Boundaries</u>												
Number of Students	1,134	1,147	1,185	1,207	1,252	21.2%	5.4%	41.5%	26.9%	4.4%	38.3%	14.4%
Percent of Building Occupied	87%	88%	91%	93%	96%							
Available Seats	164	151	113	91	46							
<u>Option 1</u>												
Number of Students	1,056	1,033	1,062	1,074	1,116	22.2%	5.4%	42.2%	26.1%	4.1%	40.0%	15.2%
Percent of Building Occupied	81%	80%	82%	83%	86%							
Available Seats	242	265	236	224	182							
<u>Option 2</u>												
Number of Students	1,054	1,030	1,049	1,061	1,106	22.0%	5.3%	41.3%	26.8%	4.6%	39.3%	15.1%
Percent of Building Occupied	81%	79%	81%	82%	85%							
Available Seats	244	268	249	237	192							
<u>Option 3</u>												
Number of Students	1,062	1,033	1,061	1,072	1,125	21.9%	5.3%	41.9%	26.6%	4.4%	40.0%	15.4%
Percent of Building Occupied	82%	80%	82%	83%	87%							
Available Seats	236	265	237	226	173							

Note: In the 2020–2021 school year, the enrollment projections display reassignments for students in Grades 6 and 7 to other middle schools while Grade 8 students are grandfathered at their current school assignment. In the 2021–2022 the data displays all Grade 6–8 students reassignments.