

Clarksburg Village Site #2 Elementary School Boundary Study



Public Information Meeting #2

May 16, 2018

Deborah Szyfer, Senior Planner

Julie Morris, Planner



MONTGOMERY COUNTY PUBLIC SCHOOLS

Agenda

- Introductions
- Background
- Boundary Process
- Presentation of Options
- Questions and Answers
- Next Steps



Background

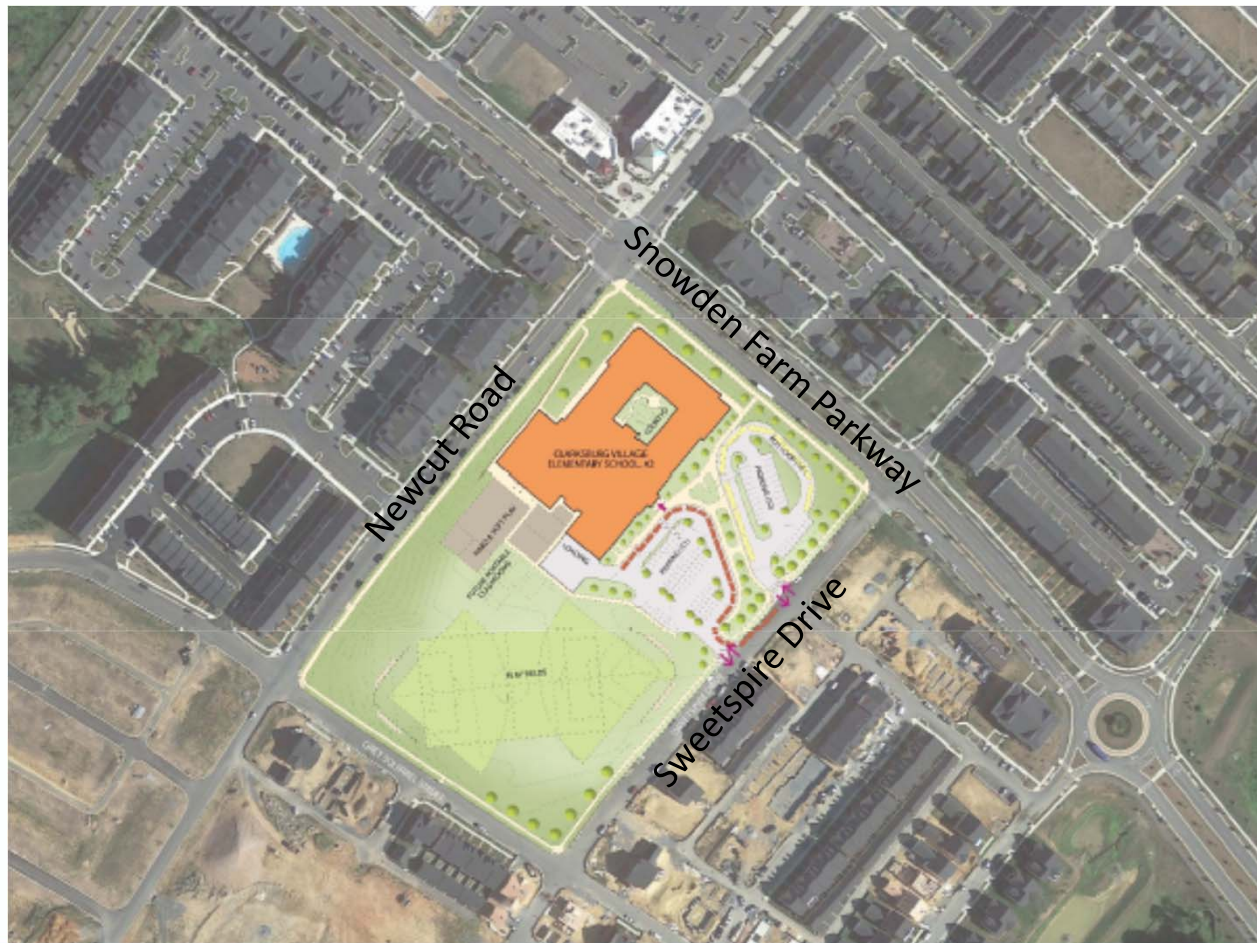


Background

- Projected enrollment in the Clarksburg Cluster indicates need for two new elementary schools
 - Clarksburg Village Site #2 ES opening in September 2019
 - Clarksburg ES #9 recommended to open in September 2021
 - Project is on a non-recommended list for one year delay to September 2022
 - County Council will take action in late May



Clarksburg Village Site #2 ES



First Floor Plan



Second Floor Plan



Enrollment Projections

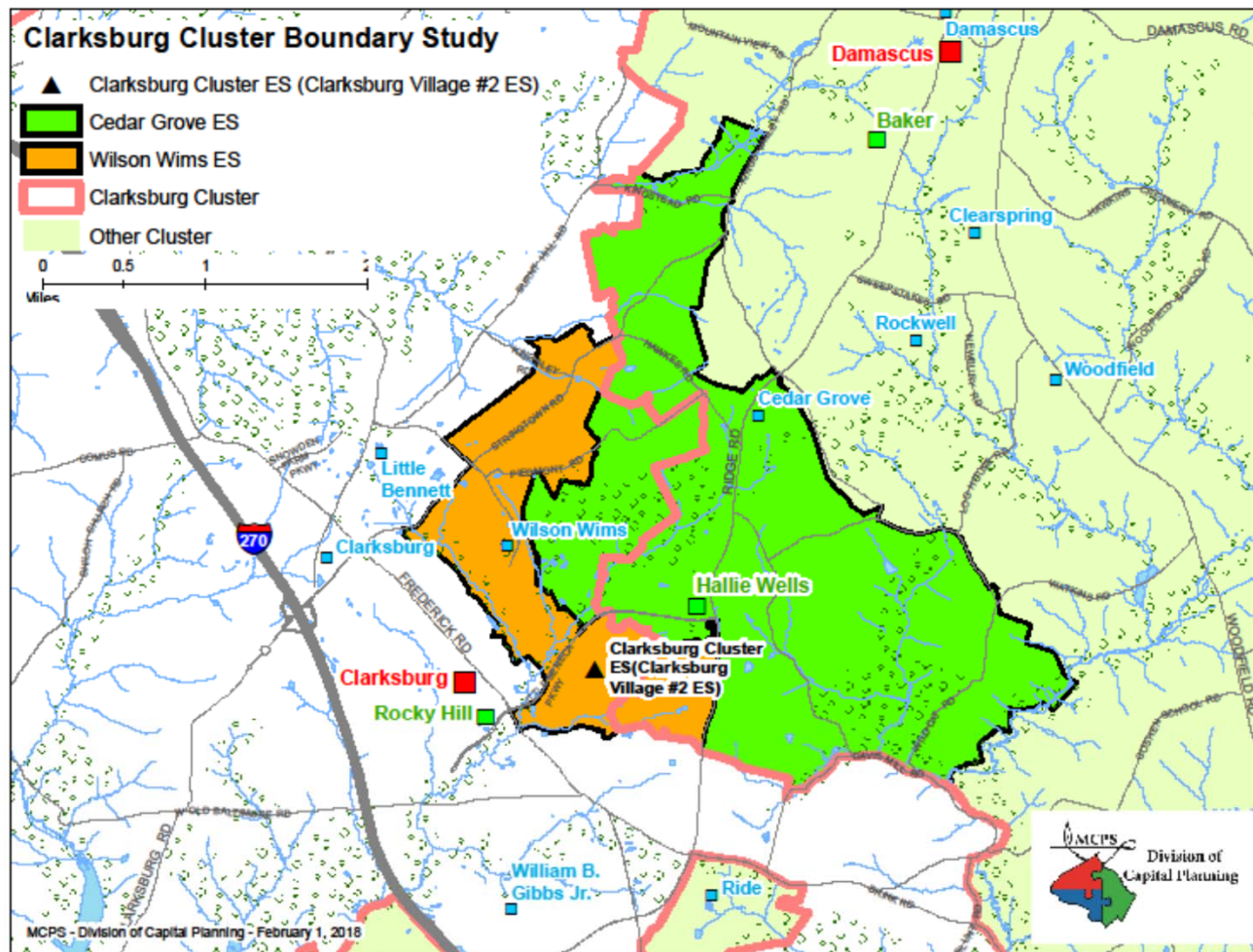
School	Actual Enroll 2017–18	Projected Enrollment					
		2018–19	2019–20	2020–21	2021–22	2022–23	2023–24
Cedar Grove ES							
Number of Seats	418	418	418	418	418	418	418
Number of Students	612	595	589	585	550	520	574
Available Seats/Deficits	-194	-177	-171	-167	-132	-102	-156
Clarksburg Village Site #2 ES							
Number of Seats			741	741	741	741	741
Number of Students			0	0	0	0	0
Available Seats/Deficits			741	741	741	741	741
Wilson Wims ES							
Number of Seats	752	752	752	752	752	752	752
Number of Students	1,208	1,189	1,236	1,317	1,320	1,311	1,330
Available Seats/Deficits	-456	-437	-484	-565	-568	-559	-578



Total Enrollment and Space

School	Actual Enroll 2017–18	Projected Enrollment					
		2018–19	2019–20	2020–21	2021–22	2022–23	2023–24
Total for Three Elementary Schools							
Number of Seats	1,170	1,170	1,911	1,911	1,911	1,911	1,911
Number of Students	1,820	1,784	1,825	1,902	1,870	1,831	1,904
Available Seats/Deficits	-650	-614	86	9	41	80	7





Interactive Zone Map

<https://mcpsgis.maps.arcgis.com/apps/View/index.html?appid=dcb841a06f2d43bd98b3945042b9b8be>



Boundary Study Process



Scope of Boundary Study

- In November 2017, the Board of Education authorized a boundary study to establish the service area for Clarksburg Village Site #2 ES
- The boundary study is limited to the Cedar Grove ES and Wilson Wims ES service areas
- No middle school or high school boundaries will change as a result of this boundary study

Committee Representation

- Two representatives from Cedar Grove Elementary School and three representatives from Wilson Wims Elementary School participated
- Three Clarksburg Cluster Coordinators
- One representative from the following community groups/partners invited:
 - Asian Pacific American Student Achievement Action Group (APASAAG)
 - National Association for the Advancement of Colored People (NAACP)



Boundary Advisory Committee Process

- Identified important community issues—developed committee criteria
- Evaluate boundary options developed by MCPS staff using committee criteria
- PTAs submit position papers for committee report
- Feedback forms from community meeting
- **No recommendations or votes were taken by committee**



Definition of Criterion

- A standard on which an evaluation or analysis may be based.
- Examples:
 - All schools within capacity
 - Minimize transportation distances
 - Promote comparable demographic school profiles
 - Provide stable boundaries for the future
- The committee develops criteria that incorporates Board of Education policy guidelines, and adds any other considerations deemed important.



Board of Education Regulation

FAA—Long-range Educational Facilities Planning

- Four main factors to consider in developing school boundaries:
 - Demographic characteristics of student population
 - Geographic proximity of communities to schools
 - Facility utilization
 - Stability of school assignments over time



Stability of School Assignment

- Wilson Wims ES Opened in 2014
- 2014—Grade K
- 2015—Grade 1
- 2016—Grade 2
- 2017—Grade 3
- 2018—Grade 4
- 2019—Grade 5 (New school opens; Grade 5 students grandfathered at Wilson Wims ES)



Committee Criteria

- Minimize bus travel time and assign students to closest elementary school
- Maintain diversity at schools including race ethnic FARMS ESOL for all three schools
- Minimize relocatable use
- Minimize distance and travel time, maximize safe walking access
- Keep communities together with reassignments done in consideration of natural features and contiguous areas
- Bring all schools within capacity while creating boundaries that will be stable and last over time
- Avoid island assignments
- Implementation issues:
- Try to keep siblings together

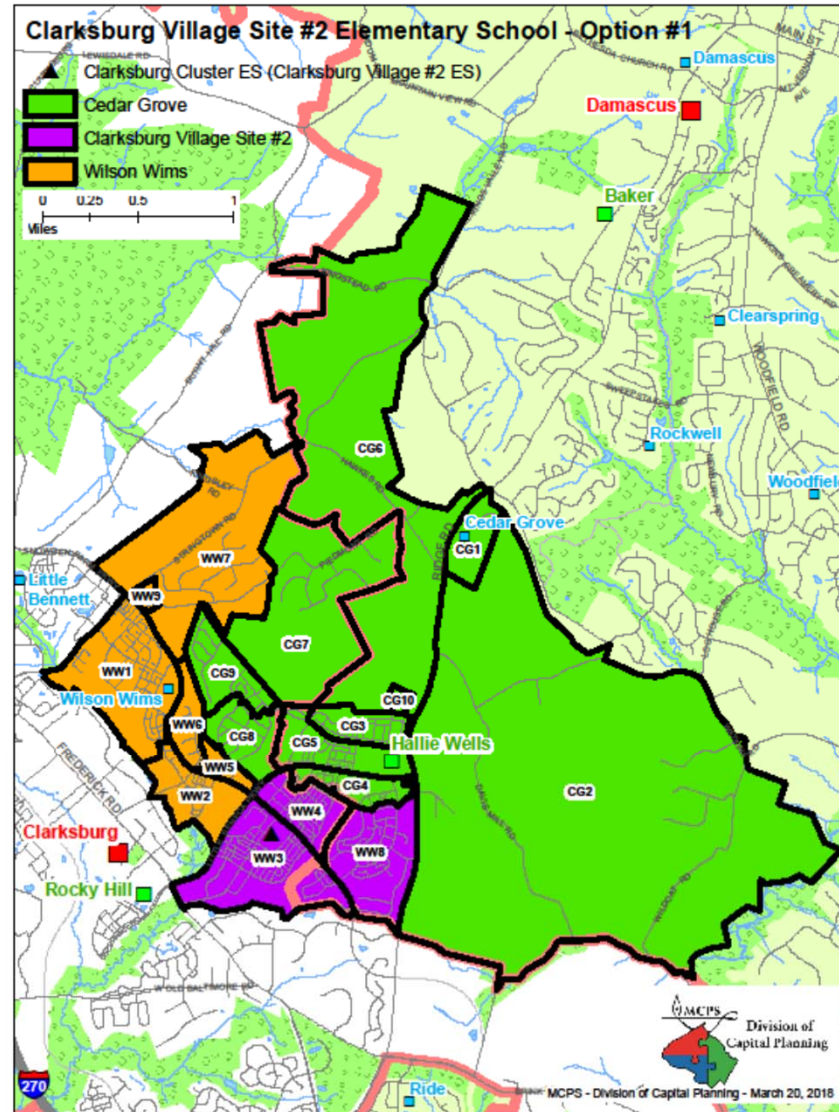


Boundary Options



Option 1

Reassign WW3,
WW4 and WW8 to
Clarksburg Village
Site #2 ES



Option 1

Reassign Zones WW3, WW4, and WW8 from Wilson Wims ES to Clarksburg Village Site #2 ES

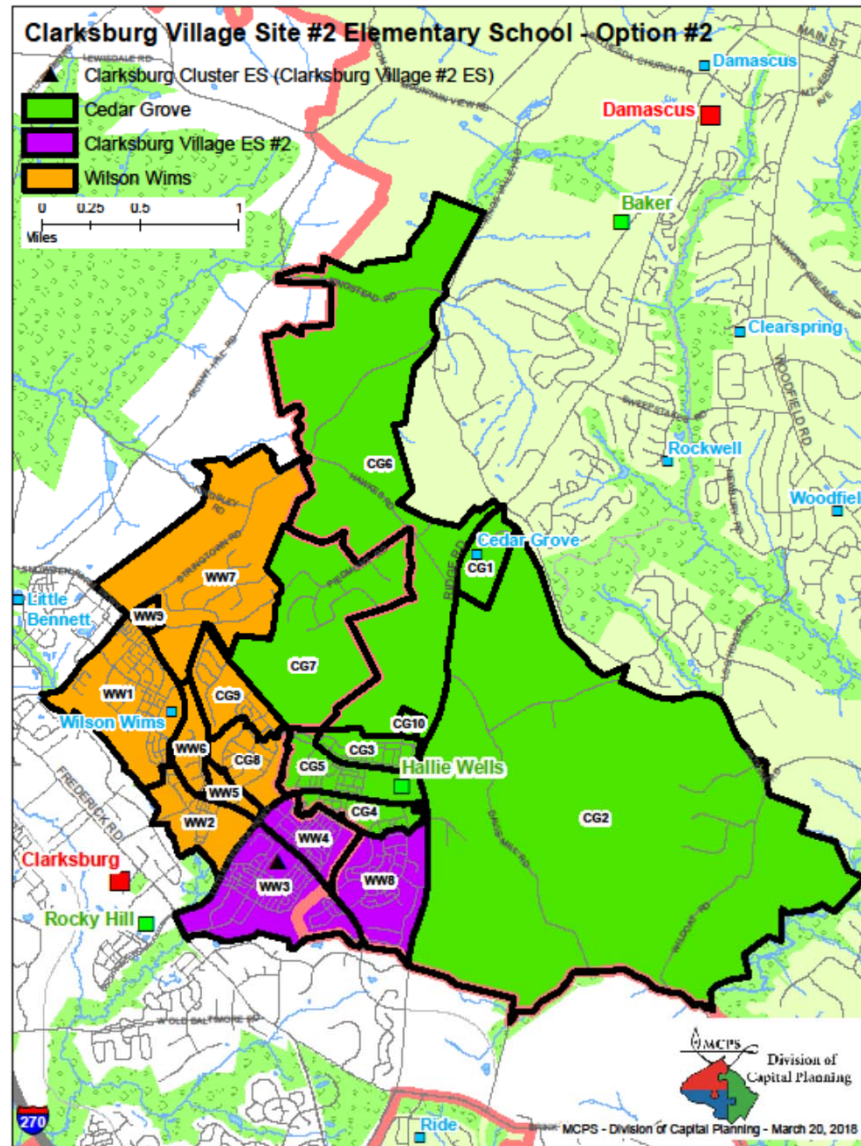
School	Projected Number of Students					2017-18 Race/Ethnic Composition						
	2019-20	2020-21	2021-22	2022-23	2023-24	% Afr. Amer.	% Asian	% Hispanic	% White	% 2 or More	% FARMS	% ESOL
	Cedar Grove ES											
Maximum Number of Seats= 418												
<u>No Change:</u>												
Number of Students	589	585	550	520	574							
Percent of Building Occupied	141%	140%	132%	124%	137%	13.2%	38.7%	10.8%	32.8%	4.6%	9.7%	11.3%
Available Seats	-171	-167	-132	-102	-156							
<u>With Change:</u>												
Number of Students	589	585	550	520	574							
Percent of Building Occupied	141%	140%	132%	124%	137%	13.2%	38.7%	10.8%	32.8%	4.6%	9.7%	11.3%
Available Seats	-171	-167	-132	-102	-156							
Clarksburg Village Site #2 ES												
Maximum Number of Seats= 741												
<u>With Change:</u>												
Number of Students	605	765	767	762	773							
Percent of Building Occupied	82%	103%	104%	103%	104%	15.4%	51.0%	12.4%	15.8%	5.4%	10.1%	11.3%
Available Seats	136	-24	-26	-21	-32							
Wilson Wims ES												
Maximum Number of Seats= 752												
<u>No Change:</u>												
Number of Students	1236	1317	1320	1311	1330							
Percent of Building Occupied	164%	175%	176%	174%	177%	15.1%	43.5%	13.4%	21.5%	6.5%	10.7%	10.1%
Available Seats	-484	-565	-568	-559	-578							
<u>With Change:</u>												
Number of Students	661	582	583	579	587							
Percent of Building Occupied	88%	77%	78%	77%	78%	14.8%	34.0%	14.7%	28.8%	7.8%	11.5%	8.5%
Available Seats	91	170	169	173	165							

In the 2019–2020 school year, the new school would open with Grades K–4 students only. Grade 5 students would be grandfathered at Cedar Grove and Wilson Wims elementary schools. In the 2020–2021 school year, Grade 5 students would articulate to Clarksburg Village Site #2 ES. The enrollment at Clarksburg Village Site #2 ES reflects 30 special education students.



Option 2

Reassign WW3,
WW4, and WW8 to
Clarksburg Village
Site #2 ES and CG8
and CG9 to Wilson
Wims ES



Option 2

Reassign Zones WW3, WW4, and WW8 from Wilson Wims ES to Clarksburg Village Site #2 ES
Reassign Zones CG 8 and CG 9 from Cedar Grove ES to Wilson Wims ES

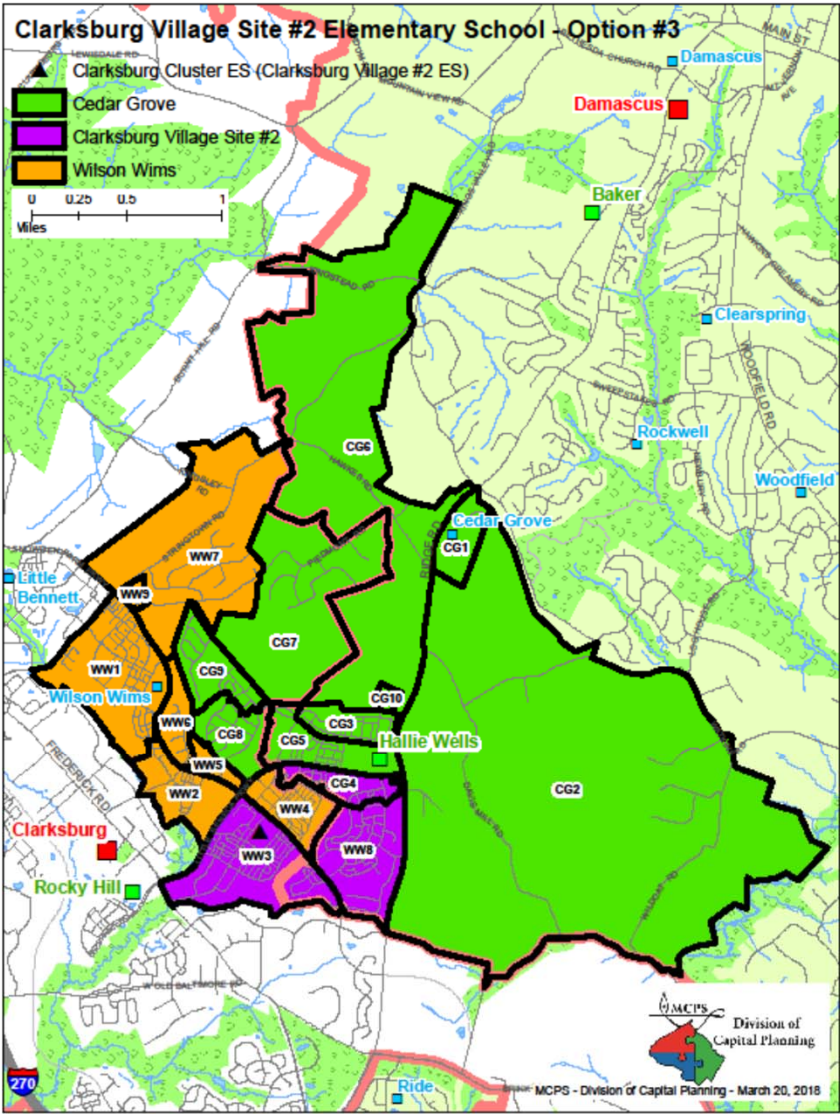
School	Projected Number of Students					2017-18 Race/Ethnic Composition						
	2019-20	2020-21	2021-22	2022-23	2023-24	% Afr. Amer.	% Asian	% Hispanic	% White	% 2 or More	% FARMS	% ESOL
Cedar Grove ES												
Maximum Number of Seats= 418												
<u>No Change:</u>												
Number of Students	589	585	550	520	574							
Percent of Building Occupied	141%	140%	132%	124%	137%	13.2%	38.7%	10.8%	32.8%	4.6%	9.7%	11.3%
Available Seats	-171	-167	-132	-102	-156							
<u>With Change:</u>												
Number of Students	412	374	352	333	367							
Percent of Building Occupied	99%	90%	84%	80%	88%	11.4%	40.0%	12.2%	31.5%	5.0%	8.2%	13.4%
Available Seats	6	44	66	85	51							
Clarksburg Village Site #2 ES												
Maximum Number of Seats= 741												
<u>With Change:</u>												
Number of Students	605	765	767	762	773							
Percent of Building Occupied	82%	103%	104%	103%	104%	15.4%	51.0%	12.4%	15.8%	5.4%	10.1%	11.3%
Available Seats	136	-24	-26	-21	-32							
Wilson Wims ES												
Maximum Number of Seats= 752												
<u>No Change:</u>												
Number of Students	1236	1317	1320	1311	1330							
Percent of Building Occupied	164%	175%	176%	174%	177%	15.1%	43.5%	13.4%	21.5%	6.5%	10.7%	10.1%
Available Seats	-484	-565	-568	-559	-578							
<u>With Change:</u>												
Number of Students	838	792	781	766	794							
Percent of Building Occupied	111%	105%	104%	102%	106%	15.3%	34.7%	12.8%	30.6%	6.6%	11.7%	8.2%
Available Seats	-86	-40	-29	-14	-42							

In the 2019-2020 school year, the new school would open with Grades K-4 students only. Grade 5 students would be grandfathered at Cedar Grove and Wilson Wims elementary schools. In the 2020-2021 school year, Grade 5 students would articulate to Clarksburg Village Site #2 ES. The enrollment at Clarksburg Village Site #2 ES reflects 30 special education students.



Option 3

Reassign CG4 and
WW3 and WW8 to
Clarksburg Village
Site #2 ES



Option 3

Reassign Zones CG4 from Cedar Grove ES and WW3 and WW8 from Wilson Wims ES to Clarksburg Village Site #2 ES

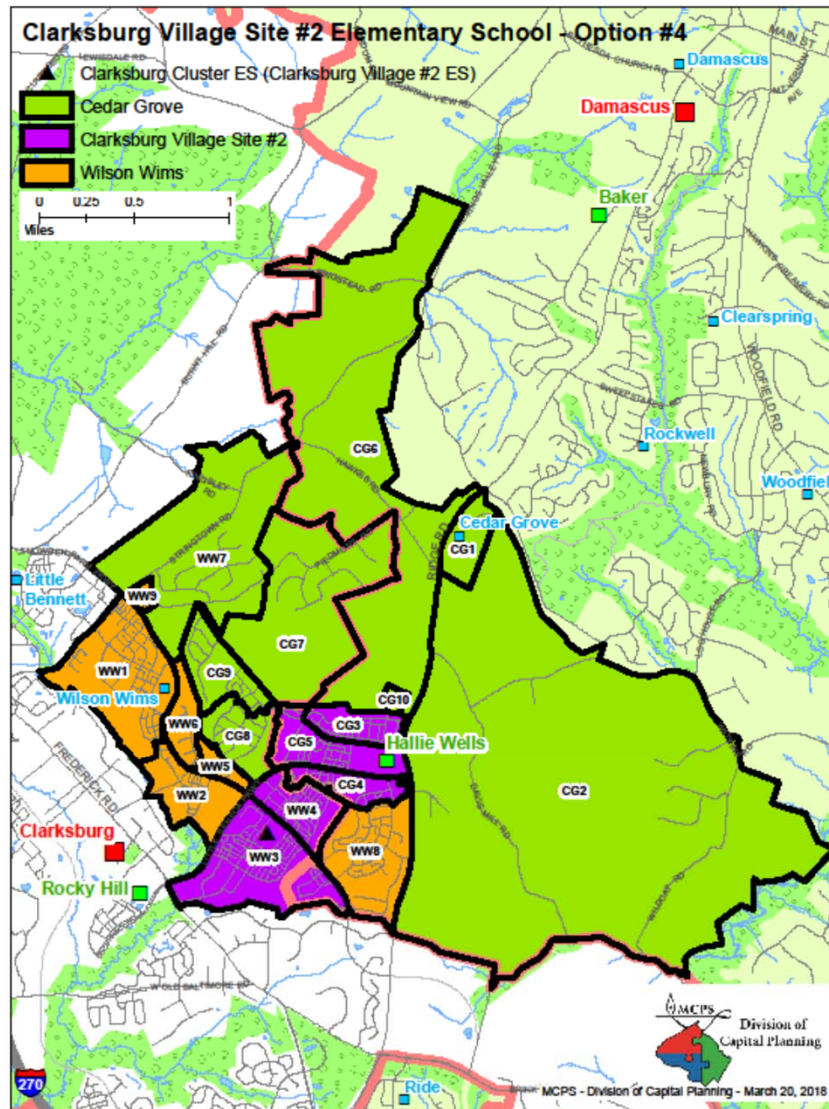
School	Projected Number of Students					2017-18						
						Race/Ethnic Composition						
	2019-20	2020-21	2021-22	2022-23	2023-24	% Afr. Amer.	% Asian	% Hispanic	% White	2 or More		
Cedar Grove ES												
Maximum Number of Seats= 418												
<u>No Change:</u>												
Number of Students	589	585	550	520	574							
Percent of Building Occupied	141%	140%	132%	124%	137%	13.2%	38.7%	10.8%	32.8%	4.6%	9.7%	11.3%
Available Seats	-171	-167	-132	-102	-156							
<u>With Change:</u>												
Number of Students	538	524	493	465	514							
Percent of Building Occupied	129%	125%	118%	111%	123%	13.1%	37.6%	10.4%	33.9%	4.9%	9.2%	10.1%
Available Seats	-120	-106	-75	-47	-96							
Clarksburg Village Site #2 ES												
Maximum Number of Seats= 741												
<u>With Change:</u>												
Number of Students	551	692	690	683	697							
Percent of Building Occupied	74%	93%	93%	92%	94%	15.7%	48.6%	12.7%	17.2%	5.8%	11.6%	12.4%
Available Seats	190	49	51	58	44							
Wilson Wims ES												
Maximum Number of Seats= 752												
<u>No Change:</u>												
Number of Students	1236	1317	1320	1311	1330							
Percent of Building Occupied	164%	175%	176%	174%	177%	15.1%	43.5%	13.4%	21.5%	6.5%	10.7%	10.1%
Available Seats	-484	-565	-568	-559	-578							
<u>With Change:</u>												
Number of Students	766	716	718	713	723							
Percent of Building Occupied	102%	95%	95%	95%	96%	14.5%	39.0%	14.2%	25.8%	6.6%	10.2%	9.0%
Available Seats	-14	36	34	39	29							

In the 2019-2020 school year, the new school would open with Grades K-4 students only. Grade 5 students would be grandfathered at Cedar Grove and Wilson Wims elementary schools. In the 2020-2021 school year, Grade 5 students would articulate to Clarksburg Village Site #2 ES. The enrollment at Clarksburg Village Site #2 ES reflects 30 special education students.



Option 4

Reassign CG3, CG4, WW3, and WW4 to Clarksburg Village Site #2 ES and WW7 to Cedar Grove ES



Option 4

Reassign Zones CG3, CG4, and CG5 from Cedar Grove ES and WW3 and WW4 from Wilson Wims ES to Clarksburg Village Site #2 ES

Reassign WW7 from Wilson Wims ES to Cedar Grove ES

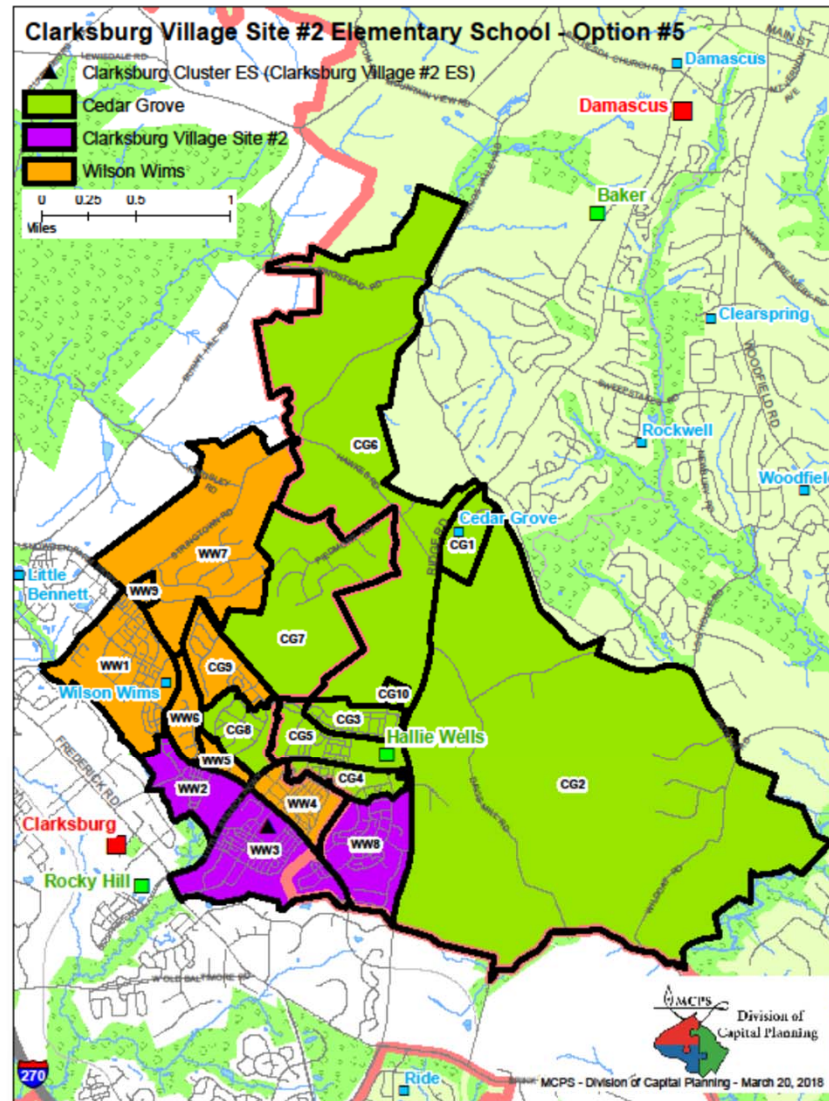
School	Projected Number of Students					2017-18 Race/Ethnic Composition						
	2019-20	2020-21	2021-22	2022-23	2023-24	% Afr. Amer.	% Asian	% Hispanic	% White	% 2 or More	% FARMS	% ESOL
Cedar Grove ES												
Maximum Number of Seats= 418												
<u>No Change:</u>												
Number of Students	589	585	550	520	574							
Percent of Building Occupied	141%	140%	132%	124%	137%	13.2%	38.7%	10.8%	32.8%	4.6%	9.7%	11.3%
Available Seats	-171	-167	-132	-102	-156							
<u>With Change:</u>												
Number of Students	412	377	358	340	371							
Percent of Building Occupied	99%	90%	86%	81%	89%	14.0%	31.1%	12.3%	38.8%	3.8%	12.8%	8.8%
Available Seats	6	41	60	78	47							
Clarksburg Village Site #2 ES												
Maximum Number of Seats= 741												
<u>With Change:</u>												
Number of Students	589	732	717	702	732							
Percent of Building Occupied	79%	99%	97%	95%	99%	17.5%	41.4%	14.3%	21.2%	5.5%	13.2%	13.8%
Available Seats	152	9	24	39	9							
Wilson Wims ES												
Maximum Number of Seats= 752												
<u>No Change:</u>												
Number of Students	1236	1317	1320	1311	1330							
Percent of Building Occupied	164%	175%	176%	174%	177%	15.1%	43.5%	13.4%	21.5%	6.5%	10.7%	10.1%
Available Seats	-484	-565	-568	-559	-578							
<u>With Change:</u>												
Number of Students	819	783	785	779	791							
Percent of Building Occupied	109%	104%	104%	104%	105%	12.8%	43.5%	10.7%	24.9%	8.1%	7.4%	8.5%
Available Seats	-67	-31	-33	-27	-39							

In the 2019-2020 school year, the new school would open with Grades K-4 students only. Grade 5 students would be grandfathered at Cedar Grove and Wilson Wims elementary schools. In the 2020-2021 school year, Grade 5 students would articulate to Clarksburg Village Site #2 ES. The enrollment at Clarksburg Village Site #2 ES reflects 30 special education students.



Option 5

Reassign WW2,
WW3, and WW8 to
Clarksburg Village Site #2 ES and CG9
to Wilson Wims ES



Option 5

Reassign Zones WW2, WW3, and WW8 from Wilson Wims ES to Clarksburg Village Site #2 ES Reassign Zone CG9 from Cedar Grove ES to Wilson Wims ES

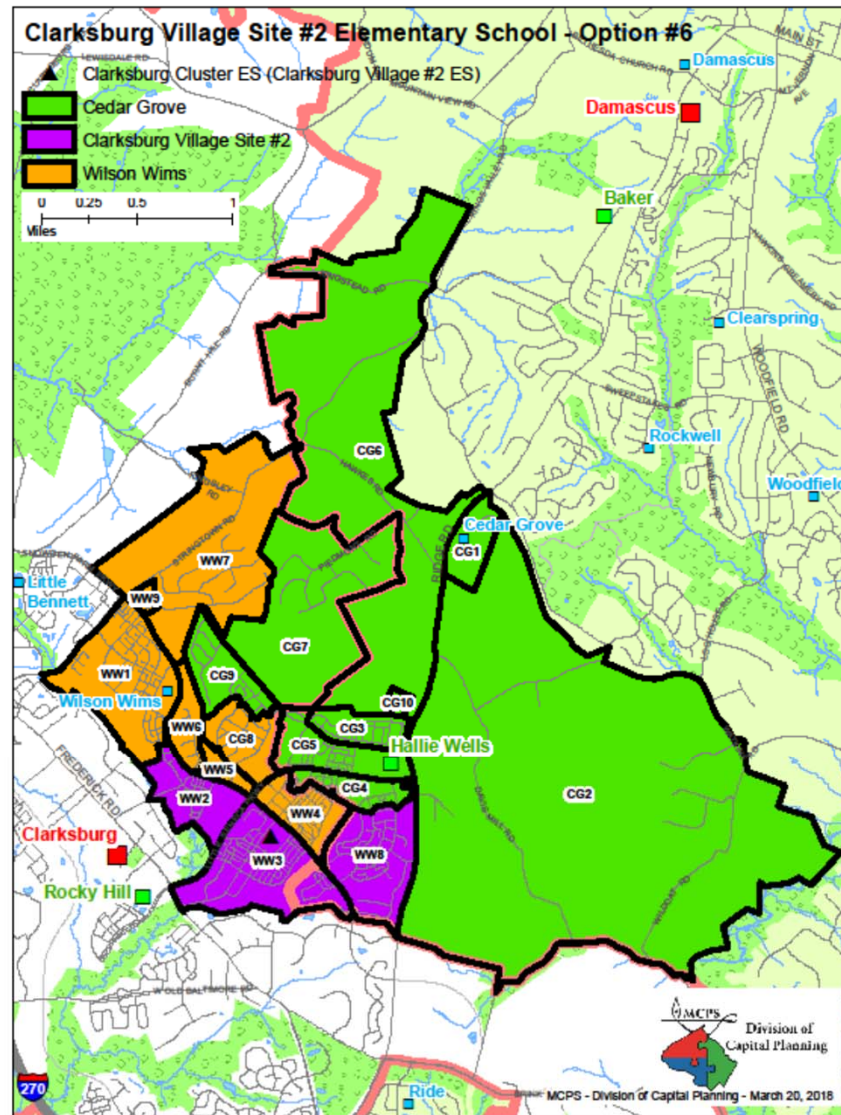
School	Projected Number of Students					2017-18 Race/Ethnic Composition						
	2019-20	2020-21	2021-22	2022-23	2023-24	% Afr. Amer.	% Asian	% Hispanic	% White	% 2 or More	% FARMS	% ESOL
	Cedar Grove ES											
Maximum Number of Seats= 418												
<u>No Change:</u>												
Number of Students	589	585	550	520	574							
Percent of Building Occupied	141%	140%	132%	124%	137%	13.2%	38.7%	10.8%	32.8%	4.6%	9.7%	11.3%
Available Seats	-171	-167	-132	-102	-156							
<u>With Change:</u>												
Number of Students	494	472	444	420	463							
Percent of Building Occupied	118%	113%	106%	100%	111%	13.2%	39.1%	12.0%	30.8%	4.9%	9.6%	12.0%
Available Seats	-76	-54	-26	-2	-45							
Clarksburg Village Site #2 ES												
Maximum Number of Seats= 741												
<u>With Change:</u>												
Number of Students	570	726	727	722	733							
Percent of Building Occupied	77%	98%	98%	98%	99%	16.6%	46.3%	12.2%	18.6%	6.3%	11.3%	11.6%
Available Seats	171	15	14	19	8							
Wilson Wims ES												
Maximum Number of Seats= 752												
<u>No Change:</u>												
Number of Students	1236	1317	1320	1311	1330							
Percent of Building Occupied	164%	175%	176%	174%	177%	15.1%	43.5%	13.4%	21.5%	6.5%	10.7%	10.1%
Available Seats	-484	-565	-568	-559	-578							
<u>With Change:</u>												
Number of Students	791	734	729	719	738							
Percent of Building Occupied	105%	98%	97%	96%	98%	13.5%	39.7%	13.2%	27.7%	6.0%	10.0%	8.3%
Available Seats	-39	18	23	33	14							

In the 2019-2020 school year, the new school would open with Grades K-4 students only. Grade 5 students would be grandfathered at Cedar Grove and Wilson Wims elementary schools. In the 2020-2021 school year, Grade 5 students would articulate to Clarksburg Village Site #2 ES. The enrollment at Clarksburg Village Site #2 ES reflects 30 special education students.



Option 6

Reassign WW2, WW3, and WW8 to Clarksburg Village Site #2 ES and CG8 to Wilson Wims ES



Option 6

Reassign Zones WW2, WW3, and WW8 from Wilson Wims ES to Clarksburg Village Site #2 ES Reassign Zone CG8 from Cedar Grove ES to Wilson Wims ES

School	Projected Number of Students					2017-18 Race/Ethnic Composition						
	2019-20	2020-21	2021-22	2022-23	2023-24	% Afr. Amer.	% Asian	% Hispanic	% White	% 2 or More	% FARMS	% ESOL
	Cedar Grove ES											
Maximum Number of Seats= 418												
<u>No Change:</u>												
Number of Students	589	585	550	520	574	13.2%	38.7%	10.8%	32.8%	4.6%	9.7%	11.3%
Percent of Building Occupied	141%	140%	132%	124%	137%							
Available Seats	-171	-167	-132	-102	-156							
<u>With Change:</u>												
Number of Students	507	487	458	433	478	11.8%	39.2%	10.7%	33.7%	4.6%	8.6%	12.2%
Percent of Building Occupied	121%	117%	110%	104%	114%							
Available Seats	-89	-69	-40	-15	-60							
Clarksburg Village Site #2 ES												
Maximum Number of Seats= 741												
<u>With Change:</u>												
Number of Students	570	726	727	722	733	16.6%	46.3%	12.2%	18.6%	6.3%	11.3%	11.6%
Percent of Building Occupied	77%	98%	98%	98%	99%							
Available Seats	171	15	14	19	8							
Wilson Wims ES												
Maximum Number of Seats= 752												
<u>No Change:</u>												
Number of Students	1236	1317	1320	1311	1330	15.1%	43.5%	13.4%	21.5%	6.5%	10.7%	10.1%
Percent of Building Occupied	164%	175%	176%	174%	177%							
Available Seats	-484	-565	-568	-559	-578							
<u>With Change:</u>												
Number of Students	778	719	715	706	724	14.5%	39.6%	14.2%	25.4%	6.3%	10.9%	8.1%
Percent of Building Occupied	103%	96%	95%	94%	96%							
Available Seats	-26	33	37	46	28							

In the 2019–2020 school year, the new school would open with Grades K–4 students only. Grade 5 students would be grandfathered at Cedar Grove and Wilson Wims elementary schools. In the 2020–2021 school year, Grade 5 students would articulate to Clarksburg Village Site #2 ES. The enrollment at Clarksburg Village Site #2 ES reflects 30 special education students.



Summary of Options—Cedar Grove

School/Option						2017-18						
	Projected Number of Students					Race/Ethnic Composition						
	2019-20	2020-21	2021-22	2022-23	2023-24	% Afr. Amer.	% Asian	% Hispanic	% White	% 2 or More	% FARMS	% ESOL
Cedar Grove ES												
Maximum Number of Seats=418												
Current Boundaries												
Number of Students	589	585	550	520	574							
Percent of Building Occupied	141%	140%	132%	124%	137%	13.2%	38.7%	10.8%	32.8%	4.6%	9.7%	11.3%
Available Seats	-171	-167	-132	-102	-156							
Option #1												
Number of Students	589	585	550	520	574							
Percent of Building Occupied	141%	140%	132%	124%	137%	13.2%	38.7%	10.8%	32.8%	4.6%	9.7%	11.3%
Available Seats	-171	-167	-132	-102	-156							
Option #2												
Number of Students	412	374	352	333	367							
Percent of Building Occupied	99%	90%	84%	80%	88%	11.4%	40.0%	12.2%	31.5%	5.0%	8.2%	13.4%
Available Seats	6	44	66	85	51							
Option #3												
Number of Students	538	524	493	465	514							
Percent of Building Occupied	129%	125%	118%	111%	123%	13.1%	37.6%	10.4%	33.9%	4.9%	9.2%	10.1%
Available Seats	-120	-106	-75	-47	-96							
Option #4												
Number of Students	412	377	358	340	371							
Percent of Building Occupied	99%	90%	86%	81%	89%	14.0%	31.1%	12.3%	38.8%	3.8%	12.8%	8.8%
Available Seats	6	41	60	78	47							
Option #5												
Number of Students	494	472	444	420	463							
Percent of Building Occupied	118%	113%	106%	100%	111%	13.2%	39.1%	12.0%	30.8%	4.9%	9.6%	12.0%
Available Seats	-76	-54	-26	-2	-45							
Option #6												
Number of Students	507	487	458	433	478							
Percent of Building Occupied	121%	117%	110%	104%	114%	11.8%	39.2%	10.7%	33.7%	4.6%	8.6%	12.2%
Available Seats	-89	-69	-40	-15	-60							



Summary of Options—Clarksburg Village Site #2

Clarksburg Village Site #2 ES												
Maximum Number of Seats=741												
Option #1												
Number of Students	605	765	767	762	773							
<i>Percent of Building Occupied</i>	82%	103%	104%	103%	104%	15.4%	51.0%	12.4%	15.8%	5.4%	10.1%	11.3%
<i>Available Seats</i>	136	-24	-26	-21	-32							
Option #2												
Number of Students	605	765	767	762	773							
<i>Percent of Building Occupied</i>	82%	103%	104%	103%	104%	15.4%	51.0%	12.4%	15.8%	5.4%	10.1%	11.3%
<i>Available Seats</i>	136	-24	-26	-21	-32							
Option #3												
Number of Students	551	692	690	683	697							
<i>Percent of Building Occupied</i>	74%	93%	93%	92%	94%	15.7%	48.6%	12.7%	17.2%	5.8%	11.6%	12.4%
<i>Available Seats</i>	190	49	51	58	44							
Option #4												
Number of Students	589	732	717	702	732							
<i>Percent of Building Occupied</i>	79%	99%	97%	95%	99%	17.5%	41.4%	14.3%	21.2%	5.5%	13.2%	13.8%
<i>Available Seats</i>	152	9	24	39	9							
Option #5												
Number of Students	570	726	727	722	733							
<i>Percent of Building Occupied</i>	77%	98%	98%	98%	99%	16.6%	46.3%	12.2%	18.6%	6.3%	11.3%	11.6%
<i>Available Seats</i>	171	15	14	19	8							
Option #6												
Number of Students	570	726	727	722	733							
<i>Percent of Building Occupied</i>	77%	98%	98%	98%	99%	16.6%	46.3%	12.2%	18.6%	6.3%	11.3%	11.6%
<i>Available Seats</i>	171	15	14	19	8							



Summary of Options—Wilson Wims

Wilson Wims ES												
Maximum Number of Seats=752												
Current Boundaries												
Number of Students	1,236	1,317	1,320	1,311	1,330							
Percent of Building Occupied	164%	175%	176%	174%	177%	15.1%	43.5%	13.4%	21.5%	6.5%	10.7%	10.1%
Available Seats	-484	-565	-568	-559	-578							
Option #1	661	582	583	579	587							
Number of Students	88%	77%	78%	77%	78%	14.8%	34.0%	14.7%	28.8%	7.8%	11.5%	8.5%
Percent of Building Occupied	91	170	169	173	165							
Available Seats												
Option #2												
Number of Students	838	792	781	766	794							
Percent of Building Occupied	111%	105%	104%	102%	106%	15.3%	34.7%	12.8%	30.6%	6.6%	11.7%	8.2%
Available Seats	-86	-40	-29	-14	-42							
Option #3												
Number of Students	766	716	718	713	723							
Percent of Building Occupied	102%	95%	95%	95%	96%	14.5%	39.0%	14.2%	25.8%	6.6%	10.2%	9.0%
Available Seats	-14	36	34	39	29							
Option #4												
Number of Students	819	783	785	779	791							
Percent of Building Occupied	109%	104%	104%	104%	105%	12.8%	43.5%	10.7%	24.9%	8.1%	7.4%	8.5%
Available Seats	-67	-31	-33	-27	-39							
Option #5												
Number of Students	791	734	729	719	738							
Percent of Building Occupied	105%	98%	97%	96%	98%	13.5%	39.7%	13.2%	27.7%	6.0%	10.0%	8.3%
Available Seats	-39	18	23	33	14							
Option #6												
Number of Students	778	719	715	706	724							
Percent of Building Occupied	103%	96%	95%	94%	96%	14.5%	39.6%	14.2%	25.4%	6.3%	10.9%	8.1%
Available Seats	-26	33	37	46	28							



Next Steps



Boundary Study Timeline

	Date	Activity
1	Mar. 7, 2018	Process, timeline.. Establish criteria. Review Zones.
2	Mar. 22, 2018	Staff presents first set of options.
--	<i>Apr. 3, 2018</i>	<i>School PTA meetings at Cedar Grove and Wilson Wims ES to share options/gather feedback.</i>
3	Apr. 11, 2018	Share feedback on first round of options.
4	Apr. 25, 2018	Staff presents second round of options (cancelled).
--	<i>May 1, 2018</i>	<i>School PTA meetings at Cedar Grove and Wilson Wims ES to share 2nd round of options/gather feedback. (cancelled)</i>
5	May 6, 2018	Share feedback on second set of options and draft committee report (cancelled).
--	<i>May 16, 2018</i>	<i>Second Public Information Meeting to present all Boundary Options and gather feedback.</i>
6	May 30, 2018	Committee members submit option evaluations and schools submit PTA position papers.
--	June 6, 2018	Committee report (option evaluations and position papers) due to superintendent.



Board of Education Process

Date	Activity
June-October 2018	Superintendent of schools review
Mid-October 2018	Superintendent recommendation to the Board of Education
Early November 2018	Board of Education Work session
Mid November 2018	Board of Education boundary and CIP Public Hearings
Mid November 2018	Board of Education Work session
Mid November 2018	Board of Education boundary and CIP Public Hearings (if alternatives offered)
End of November 2018	Board of Education action on boundaries
September 2019	School opens/Boundary changes implemented



Questions and Answers

- For up to date information on the boundary study go to:

<http://www.montgomeryschoolsmd.org/departments/planning/cburgvillage2.aspx>

