

# Clarksburg Village Site #2 Elementary School Boundary Study



## Public Information Meeting

February 27, 2018

Deborah Szyfer, Senior Planner

Julie Morris, Planner



MONTGOMERY COUNTY PUBLIC SCHOOLS

# Agenda

---

- Background
- Scope
- Enrollment Trends
- Boundary Study Process
- Questions and Answers



# Background

- Enrollment growth in Clarksburg Cluster has resulted in opening of several schools:

School	Year
Rocky Hill MS at future site of Clarksburg HS	1995
Rocky Hill MS at current site	2004
Clarksburg HS	2006
Little Bennett ES	2006
William B. Gibbs, Jr. ES	2009
Wilson Wims ES	2014



# Background

- Projected enrollment in the Clarksburg Cluster indicates need for two new elementary schools
  - Clarksburg Village Site #2 ES opening in September 2019
  - Clarksburg ES #9 recommended to open in September 2021



# Clarksburg Village Site #2 ES



# First Floor Plan



# Second Floor Plan





# Enrollment Projections

School	Actual Enroll 2017–18	Projected Enrollment					
		2018–19	2019–20	2020–21	2021–22	2022–23	2023–24
Cedar Grove ES							
Number of Seats	418	418	418	418	418	418	418
Number of Students	612	595	589	585	550	520	574
Available Seats/Deficits	-194	-177	-171	-167	-132	-102	-156
Clarksburg Village Site #2 ES							
Number of Seats			741	741	741	741	741
Number of Students			0	0	0	0	0
Available Seats/Deficits			741	741	741	741	741
Wilson Wims ES							
Number of Seats	752	752	752	752	752	752	752
Number of Students	1,208	1,189	1,236	1,317	1,320	1,311	1,330
Available Seats/Deficits	-456	-437	-484	-565	-568	-559	-578





# Total Enrollment and Space

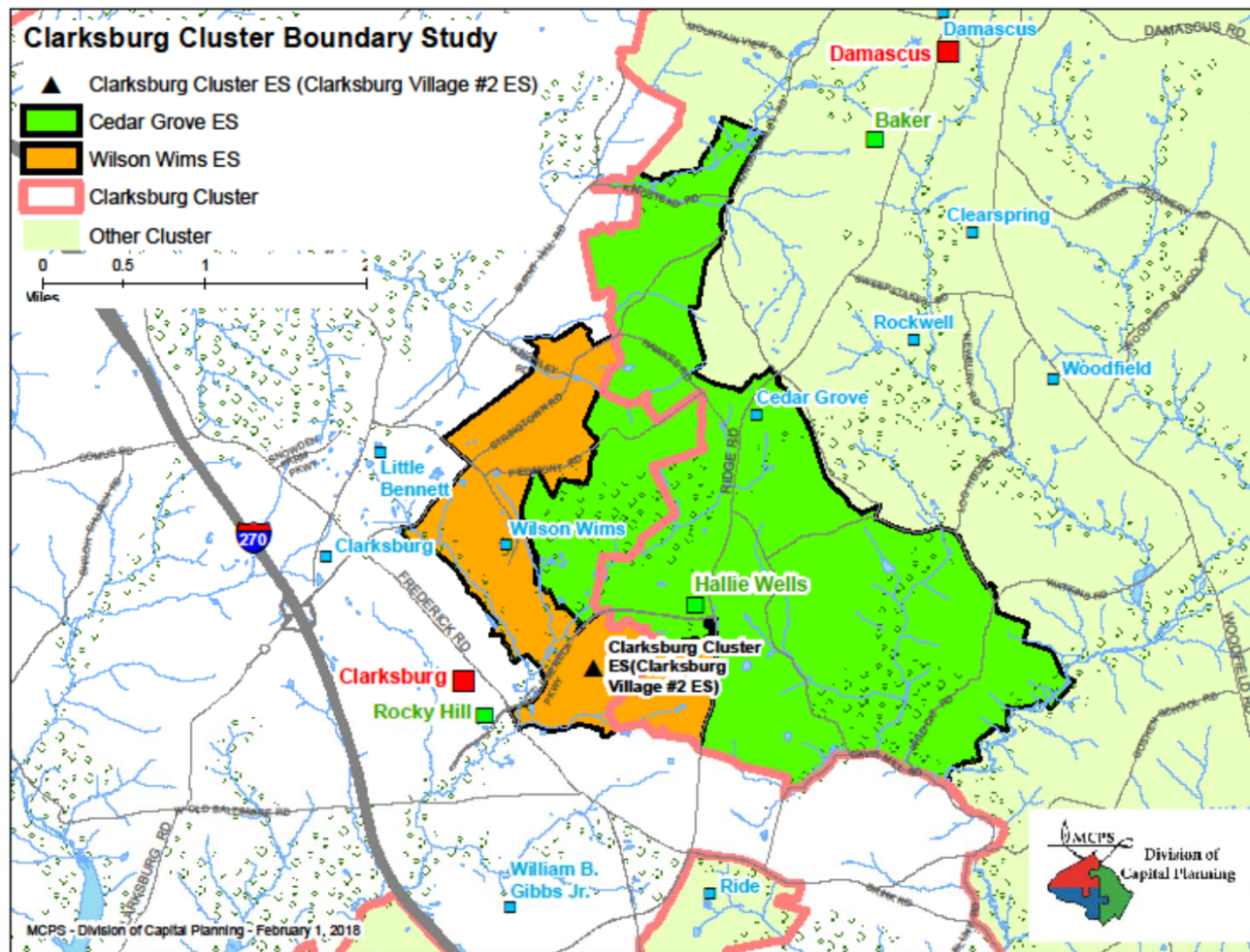
School	Actual Enroll 2017–18	Projected Enrollment					
		2018–19	2019–20	2020–21	2021–22	2022–23	2023–24
Total for Three Elementary Schools							
Number of Seats	1,170	1,170	1,911	1,911	1,911	1,911	1,911
Number of Students	1,820	1,784	1,825	1,902	1,870	1,831	1,904
Available Seats/Deficits	-650	-614	86	9	41	80	7



# Scope of Boundary Study

- In November 2017, the Board of Education authorized a boundary study to establish the service area for Clarksburg Village Site #2 ES
- The new school will be located at 22500 Sweetspire Drive in Clarksburg, Maryland
- The boundary study is limited to the Cedar Grove ES and Wilson Wims ES service areas
- No middle school or high school boundaries will change as a result of this boundary study





# Boundary Advisory Committee Process

- Representatives evaluate boundary options developed by MCPS staff using committee criteria
- Identify important community issues – develop committee criteria
- PTAs submit position papers for committee report
- Feedback forms from community meeting



# Committee Representation

- Four Representatives from each school (Cedar Grove and Wilson Wims Elementary Schools)
- Clarksburg Cluster Coordinators
- Representatives from community groups/partners invited:
  - Asian Pacific American Student Achievement Action Group (APASAAG)
  - African American Student Achievement Action Group (AASAAG)
  - Latin Student Achievement Action Group (LSAAG)
  - National Association for the Advancement of Colored People (NAACP)



# Role of Committee Members

- To generate committee criteria that will be used by MCPS staff to develop boundary options
- To review staff developed “zones” that are used as the building blocks of options
- To evaluate MCPS staff developed options using the committee criteria
- To inform the school communities they represent about the committee work
- No recommendations or vote will be taken by committee members



# Definition of Criterion

- A standard on which an evaluation or analysis may be based.
- Examples:
  - All schools within capacity
  - Minimize transportation distances
  - Promote comparable demographic school profiles
  - Provide stable boundaries for the future
- The committee develops criteria that incorporates Board of Education policy guidelines, and adds any other considerations deemed important.





# Board of Education Regulation

## *FAA—Long-range Educational Facilities Planning*

- Four main factors to consider in developing school boundaries:
  - Demographic characteristics of student population
  - Geographic proximity of communities to schools
  - Facility utilization
  - Stability of school assignments over time



# Stability of School Assignment

- Wilson Wims ES Opened in 2014
- 2014—Grade K
- 2015—Grade 1
- 2016—Grade 2
- 2017—Grade 3
- 2018—Grade 4
- 2019—Grade 5 (New school opens; Grade 5 students grandfathered at Wilson Wims ES)



# Role of MCPS Staff

- Facilitate committee meetings
- Develop boundary options
- Provide information requested by the committee



# Boundary Study Timeline

	Date	Activity
1	Mar. 7, 2018	Process, timeline.. Establish criteria. Review Zones.
2	Mar. 21, 2018	Staff presents first set of options.
--	<i>Apr. 3, 2018</i>	<i>School PTA meetings at Cedar Grove and Wilson Wims ES to share options/gather feedback.</i>
3	Apr. 11, 2018	Share feedback on first round of options.
4	Apr. 25, 2018	Staff presents second round of options (if needed).
--	<i>May 1, 2018</i>	<i>School PTA meetings at Cedar Grove and Wilson Wims ES to share 2nd round of options/gather feedback.</i>
5	May 6, 2018	Share feedback on second set of options and draft committee report (if needed).
--	<i>May 23, 2018</i>	<i>Second Public Information Meeting to present all Boundary Options and gather feedback.</i>
6	May 30, 2018	Committee members submit option evaluations and schools submit PTA position papers.
--	June 6, 2018	Committee report (option evaluations and position papers) due to superintendent.



# Board of Education Process

Date	Activity
June-October 2018	Superintendent of School review
Mid-October 2018	Superintendent recommendation to the Board of Education
Early November 2018	Board of Education Work session
Mid November 2018	Board of Education boundary and CIP Public Hearings
End of November 2018	Board of Education action on boundaries
September 2019	School opens/Boundary changes implemented



# Questions and Answers

- For up to date information on the boundary study go to:

<http://www.montgomeryschoolsmd.org/departments/planning/cburgvillage2.aspx>

