

Clarksburg Village Site #2 Elementary School Boundary Advisory Committee

March 21, 2018

Boundary Options

Option # 1	Reassign Zones WW3, WW4, and 8 from Wilson Wims Elementary School to Clarksburg Village Site #2 Elementary School No Change to Cedar Grove Elementary School
Option # 2	Reassign Zones WW3, WW4, and 8 from Wilson Wims Elementary School to Clarksburg Village Site #2 Elementary School Reassign Zones CG8 and CG9 from Cedar Grove Elementary School to Wilson Wims Elementary School
Option # 3	Reassign Zone CG4 from Cedar Grove Elementary School and Zones WW3 and WW8 from Wilson Wims Elementary School to Clarksburg Village Site #2 Elementary School
Option # 4	Reassign Zones CG3, CG4, and CG5 from Cedar Grove Elementary School and WW3 and WW4 from Wilson Wims Elementary School to Clarksburg Village Site #2 Elementary School Reassign Zone WW7 from Wilson Wims Elementary School to Cedar Grove Elementary School
Option #5	Reassign Zones WW2, WW3, and WW8 from Wilson Wims Elementary School to Clarksburg Village Site #2 Elementary School Reassign Zone CG9 from Cedar Grove Elementary School to Wilson Wims Elementary School
Option #6	Reassign Zones WW2, WW3, and WW8 from Wilson Wims Elementary School to Clarksburg Village Site #2 Elementary School Reassign Zone CG8 from Cedar Grove Elementary School to Wilson Wims Elementary School

These boundary options, and all materials relating to the boundary review process, are available at the following website:

<http://www.montgomeryschoolsmd.org/departments/planning/cburgvillage2.aspx>

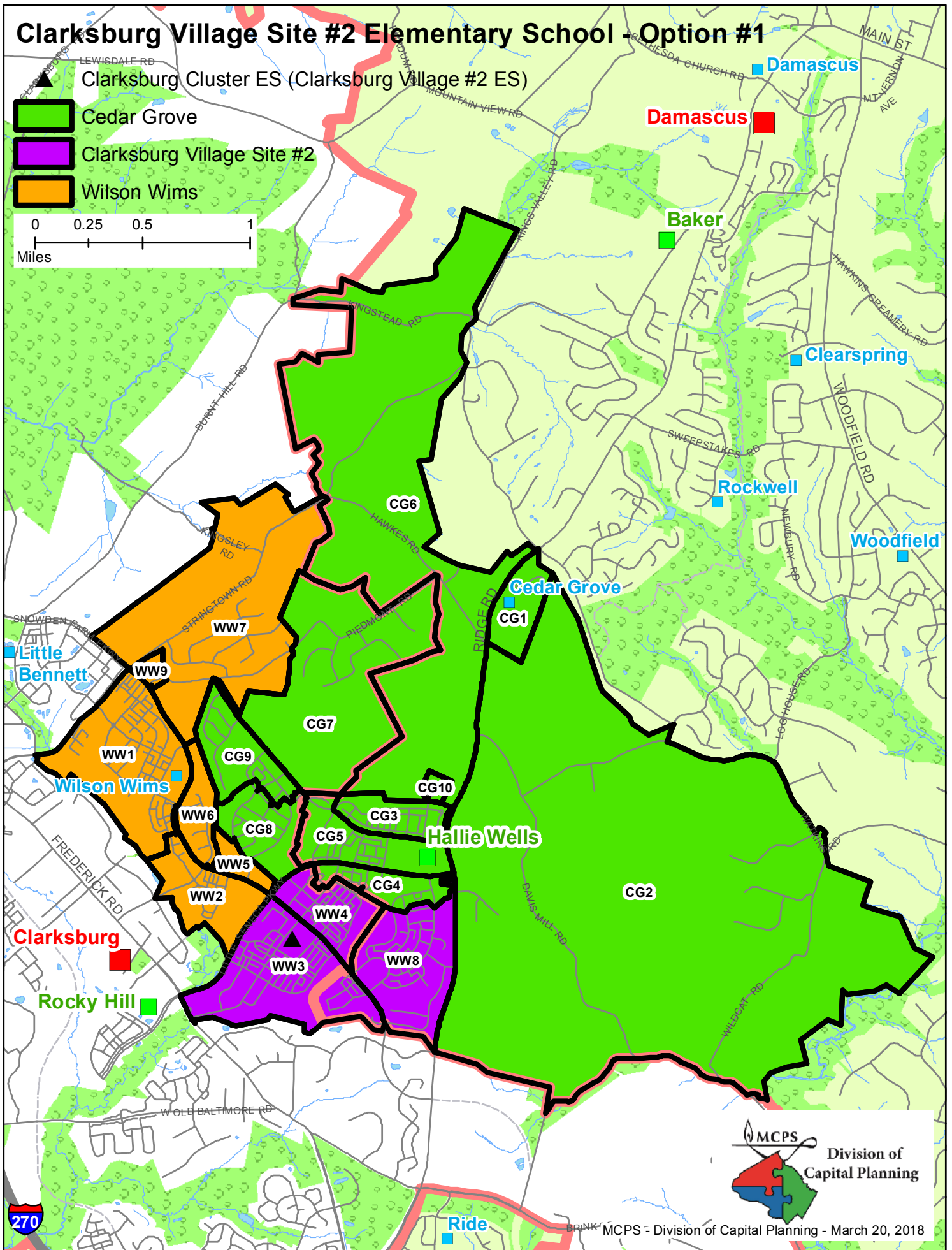
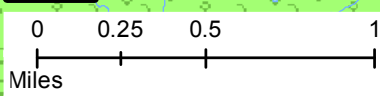
Clarksburg Village Site #2 Elementary School - Option #1

▲ Clarksburg Cluster ES (Clarksburg Village #2 ES)

■ Cedar Grove

■ Clarksburg Village Site #2

■ Wilson Wims



Option #1

Clarksburg Village Site #2 Elementary School

Boundary Study

March 21, 2018

Reassign Zones WW3, WW4, and WW8 from Wilson Wims ES to Clarksburg Village Site #2 ES

School	Projected Number of Students					2017-18 Race/Ethnic Composition						
	2019-20	2020-21	2021-22	2022-23	2023-24	% Afr. Amer.	% Asian	% Hispanic	% White	% 2 or More	% FARMS	% ESOL
Cedar Grove ES												
Maximum Number of Seats= 418												
<u>No Change:</u>												
Number of Students	589	585	550	520	574							
Percent of Building Occupied	141%	140%	132%	124%	137%	13.2%	38.7%	10.8%	32.8%	4.6%	9.7%	11.3%
Available Seats	-171	-167	-132	-102	-156							
<u>With Change:</u>												
Number of Students	589	585	550	520	574							
Percent of Building Occupied	141%	140%	132%	124%	137%	13.2%	38.7%	10.8%	32.8%	4.6%	9.7%	11.3%
Available Seats	-171	-167	-132	-102	-156							
Clarksburg Village Site #2 ES												
Maximum Number of Seats= 741												
<u>With Change:</u>												
Number of Students	605	765	767	762	773							
Percent of Building Occupied	82%	103%	104%	103%	104%	15.4%	51.0%	12.4%	15.8%	5.4%	10.1%	11.3%
Available Seats	136	-24	-26	-21	-32							
Wilson Wims ES												
Maximum Number of Seats= 752												
<u>No Change:</u>												
Number of Students	1236	1317	1320	1311	1330							
Percent of Building Occupied	164%	175%	176%	174%	177%	15.1%	43.5%	13.4%	21.5%	6.5%	10.7%	10.1%
Available Seats	-484	-565	-568	-559	-578							
<u>With Change:</u>												
Number of Students	661	582	583	579	587							
Percent of Building Occupied	88%	77%	78%	77%	78%	14.8%	34.0%	14.7%	28.8%	7.8%	11.5%	8.5%
Available Seats	91	170	169	173	165							

In the 2019-2020 school year, the new school would open with Grades K-4 students only. Grade 5 students would be grandfathered at Cedar Grove and Wilson Wims elementary schools. In the 2020-2021 school year, Grade 5 students would articulate to Clarksburg Village Site #2 ES. The enrollment at Clarksburg Village Site #2 ES reflects 30 special education students.

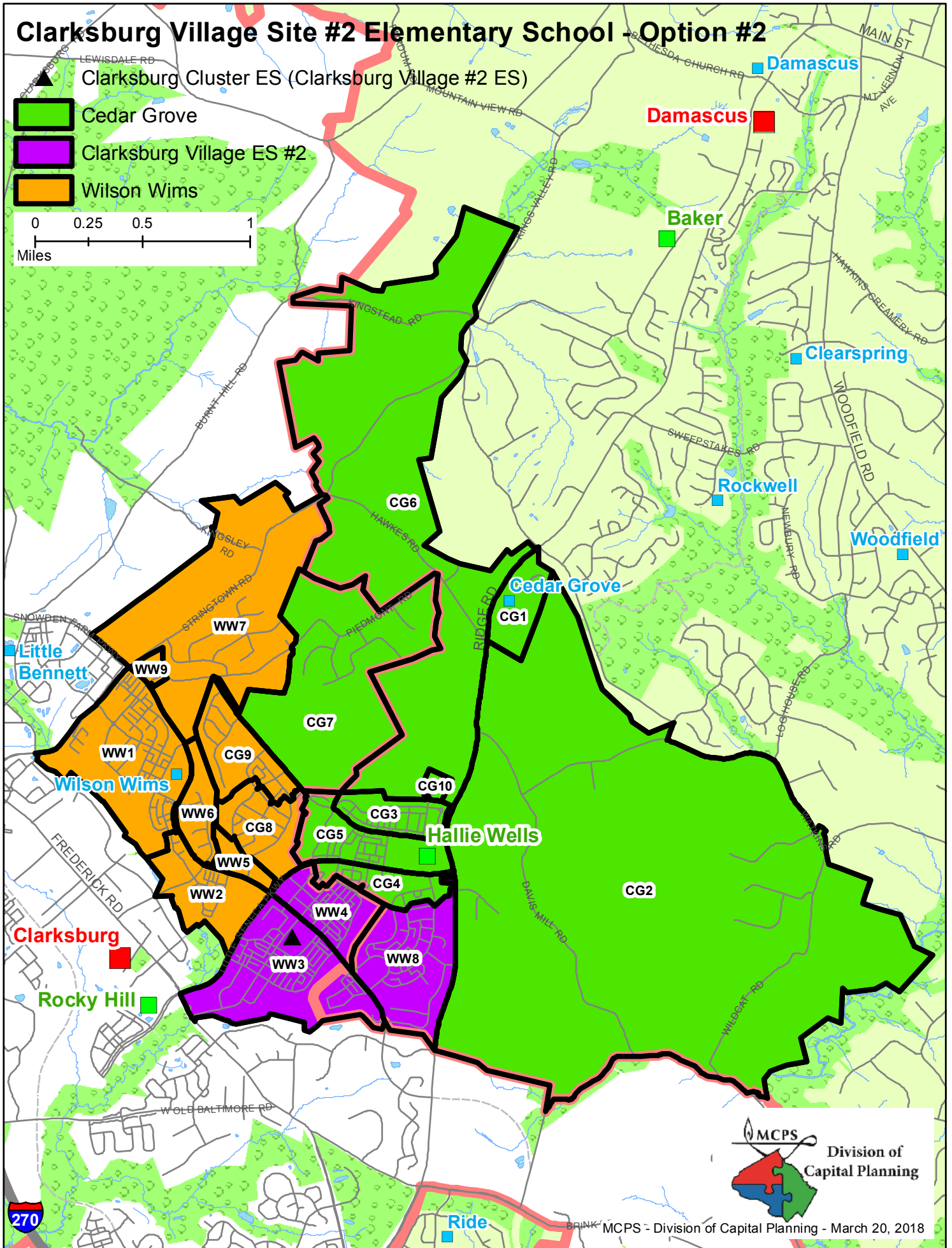
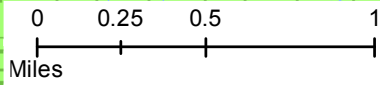
Clarksburg Village Site #2 Elementary School - Option #2

▲ Clarksburg Cluster ES (Clarksburg Village #2 ES)

■ Cedar Grove

■ Clarksburg Village ES #2

■ Wilson Wims



Option #2

Clarksburg Village Site #2 Elementary School

Boundary Study

March 21, 2018

Reassign Zones WW3, WW4, and WW8 from Wilson Wims ES to Clarksburg Village Site #2 ES

Reassign Zones CG 8 and CG 9 from Cedar Grove ES to Wilson Wims ES

School	Projected Number of Students					2017-18						
						Race/Ethnic Composition						
	2019-20	2020-21	2021-22	2022-23	2023-24	% Afr. Amer.	% Asian	% Hispanic	% White	% 2 or More	% FARMS	% ESOL
Cedar Grove ES												
Maximum Number of Seats= 418												
<u>No Change:</u>												
Number of Students	589	585	550	520	574							
<i>Percent of Building Occupied</i>	141%	140%	132%	124%	137%	13.2%	38.7%	10.8%	32.8%	4.6%	9.7%	11.3%
Available Seats	-171	-167	-132	-102	-156							
<u>With Change:</u>												
Number of Students	412	374	352	333	367							
<i>Percent of Building Occupied</i>	99%	90%	84%	80%	88%	11.4%	40.0%	12.2%	31.5%	5.0%	8.2%	13.4%
Available Seats	6	44	66	85	51							
Clarksburg Village Site #2 ES												
Maximum Number of Seats= 741												
<u>With Change:</u>												
Number of Students	605	765	767	762	773							
<i>Percent of Building Occupied</i>	82%	103%	104%	103%	104%	15.4%	51.0%	12.4%	15.8%	5.4%	10.1%	11.3%
Available Seats	136	-24	-26	-21	-32							
Wilson Wims ES												
Maximum Number of Seats= 752												
<u>No Change:</u>												
Number of Students	1236	1317	1320	1311	1330							
<i>Percent of Building Occupied</i>	164%	175%	176%	174%	177%	15.1%	43.5%	13.4%	21.5%	6.5%	10.7%	10.1%
Available Seats	-484	-565	-568	-559	-578							
<u>With Change:</u>												
Number of Students	838	792	781	766	794							
<i>Percent of Building Occupied</i>	111%	105%	104%	102%	106%	15.3%	34.7%	12.8%	30.6%	6.6%	11.7%	8.2%
Available Seats	-86	-40	-29	-14	-42							

In the 2019-2020 school year, the new school would open with Grades K-4 students only. Grade 5 students would be grandfathered at Cedar Grove and Wilson Wims elementary schools. In the 2020-2021 school year, Grade 5 students would articulate to Clarksburg Village Site #2 ES. The enrollment at Clarksburg Village Site #2 ES reflects 30 special education students.

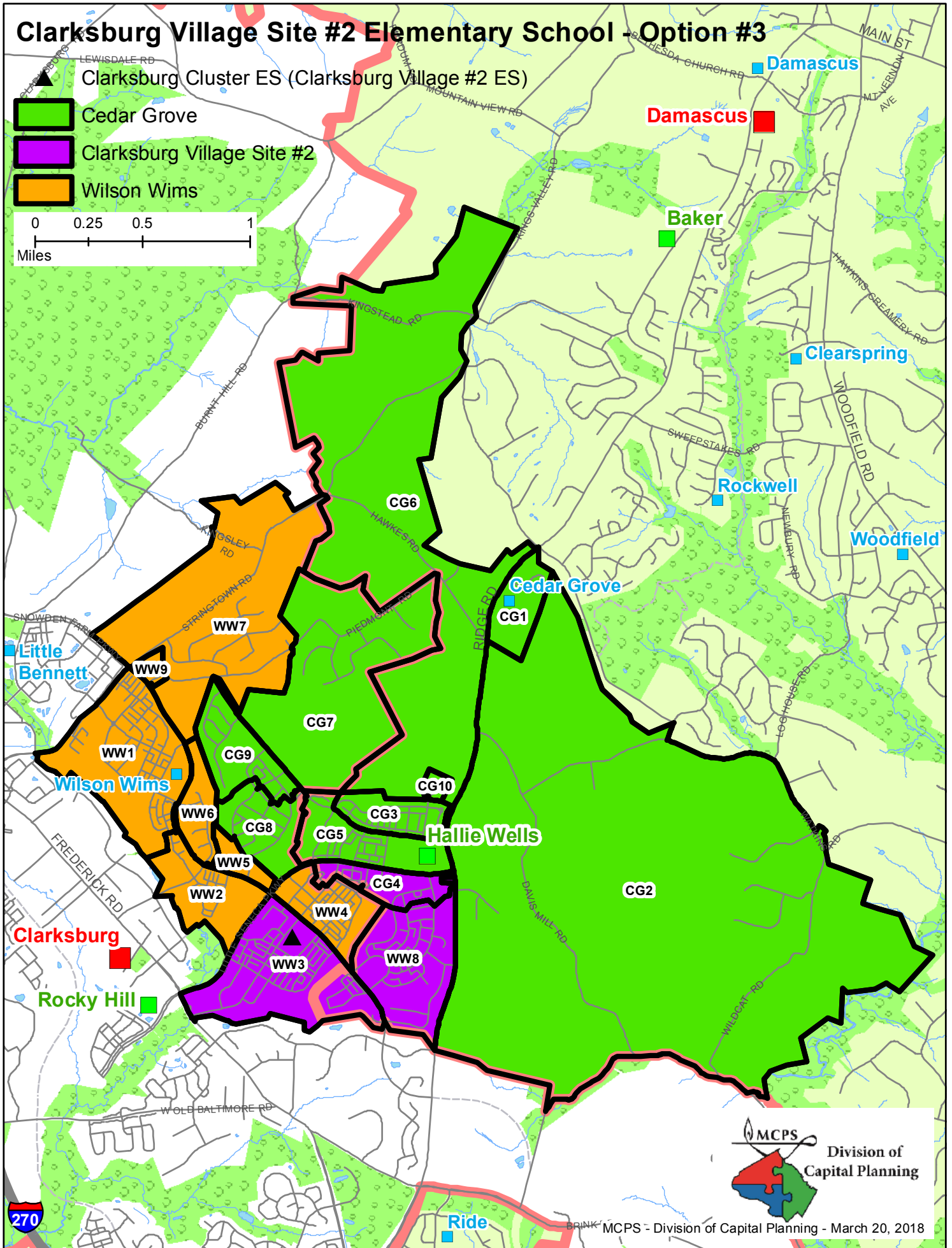
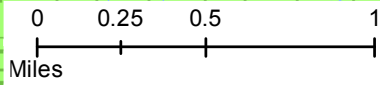
Clarksburg Village Site #2 Elementary School - Option #3

▲ Clarksburg Cluster ES (Clarksburg Village #2 ES)

■ Cedar Grove

■ Clarksburg Village Site #2

■ Wilson Wims



MCPS - Division of Capital Planning - March 20, 2018

Option #3

Clarksburg Village Site #2 Elementary School

Boundary Study

March 21, 2018

Reassign Zones CG4 from Cedar Grove ES and WW3 and WW8 from Wilson Wims ES to Clarksburg Village Site #2 ES

School	Projected Number of Students					2017-18 Race/Ethnic Composition						
	2019-20	2020-21	2021-22	2022-23	2023-24	% Afr. Amer.	% Asian	% Hispanic	% White	% 2 or More	% FARMS	% ESOL
	Cedar Grove ES											
Maximum Number of Seats= 418												
<u>No Change:</u>												
Number of Students	589	585	550	520	574							
<i>Percent of Building Occupied</i>	141%	140%	132%	124%	137%	13.2%	38.7%	10.8%	32.8%	4.6%	9.7%	11.3%
<i>Available Seats</i>	-171	-167	-132	-102	-156							
<u>With Change:</u>												
Number of Students	538	524	493	465	514							
<i>Percent of Building Occupied</i>	129%	125%	118%	111%	123%	13.1%	37.6%	10.4%	33.9%	4.9%	9.2%	10.1%
<i>Available Seats</i>	-120	-106	-75	-47	-96							
Clarksburg Village Site #2 ES												
Maximum Number of Seats= 741												
<u>With Change:</u>												
Number of Students	551	692	690	683	697							
<i>Percent of Building Occupied</i>	74%	93%	93%	92%	94%	15.7%	48.6%	12.7%	17.2%	5.8%	11.6%	12.4%
<i>Available Seats</i>	190	49	51	58	44							
Wilson Wims ES												
Maximum Number of Seats= 752												
<u>No Change:</u>												
Number of Students	1236	1317	1320	1311	1330							
<i>Percent of Building Occupied</i>	164%	175%	176%	174%	177%	15.1%	43.5%	13.4%	21.5%	6.5%	10.7%	10.1%
<i>Available Seats</i>	-484	-565	-568	-559	-578							
<u>With Change:</u>												
Number of Students	766	716	718	713	723							
<i>Percent of Building Occupied</i>	102%	95%	95%	95%	96%	14.5%	39.0%	14.2%	25.8%	6.6%	10.2%	9.0%
<i>Available Seats</i>	-14	36	34	39	29							

In the 2019-2020 school year, the new school would open with Grades K-4 students only. Grade 5 students would be grandfathered at Cedar Grove and Wilson Wims elementary schools. In the 2020-2021 school year, Grade 5 students would articulate to Clarksburg Village Site #2 ES. The enrollment at Clarksburg Village Site #2 ES reflects 30 special education students.

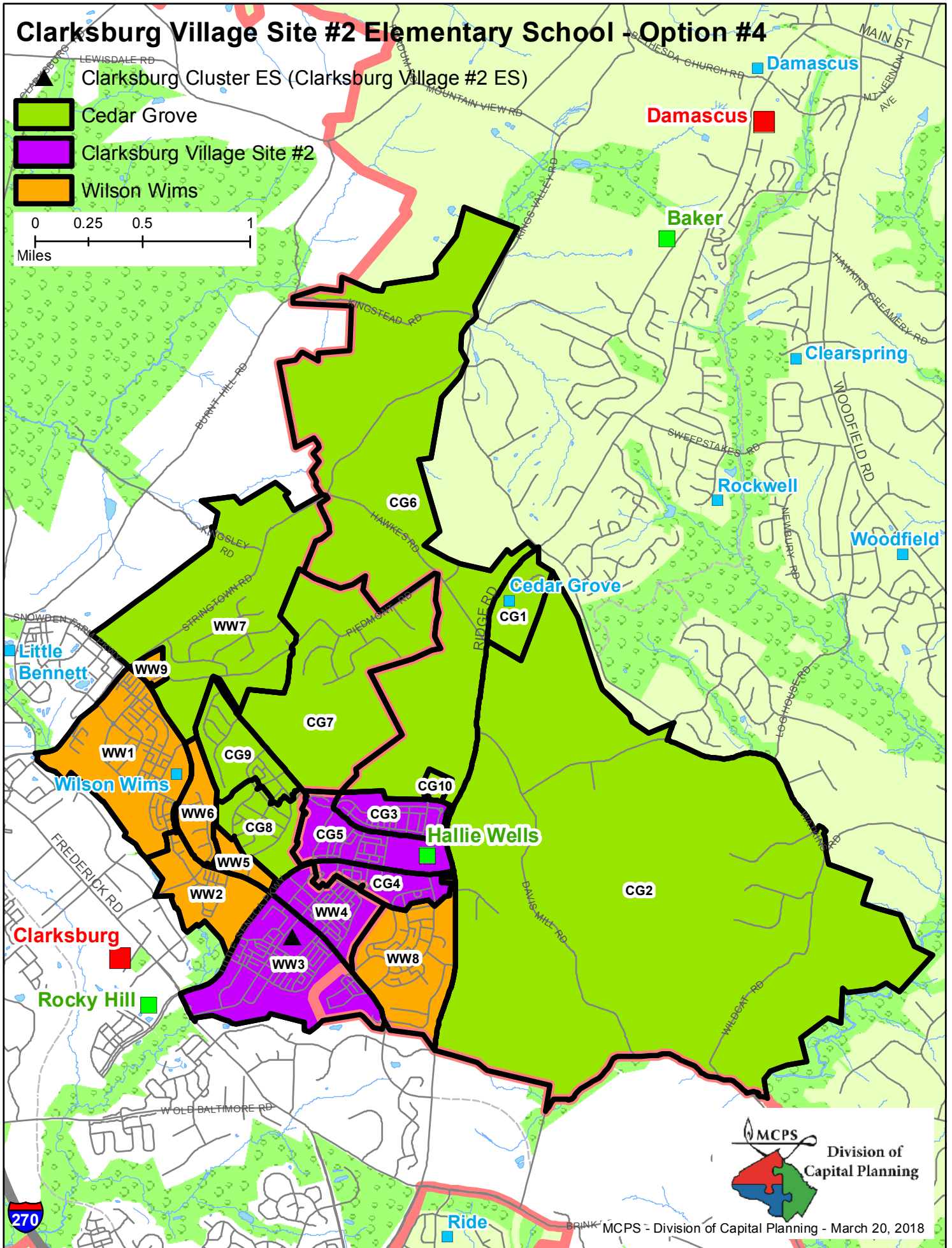
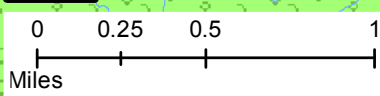
Clarksburg Village Site #2 Elementary School - Option #4

▲ Clarksburg Cluster ES (Clarksburg Village #2 ES)

■ Cedar Grove

■ Clarksburg Village Site #2

■ Wilson Wims



Option #4

Clarksburg Village Site #2 Elementary School

Boundary Study

March 21, 2018

Reassign Zones CG3, CG4, and CG5 from Cedar Grove ES and WW3 and WW4 from Wilson Wims ES to Clarksburg Village Site #2 ES

Reassign WW7 from Wilson Wims ES to Cedar Grove ES

School	Projected Number of Students					2017-18 Race/Ethnic Composition						
	2019-20	2020-21	2021-22	2022-23	2023-24	% Afr. Amer.	% Asian	% Hispanic	% White	% 2 or More	% FARMS	% ESOL
Cedar Grove ES												
Maximum Number of Seats= 418												
<u>No Change:</u>												
Number of Students	589	585	550	520	574							
<i>Percent of Building Occupied</i>	<i>141%</i>	<i>140%</i>	<i>132%</i>	<i>124%</i>	<i>137%</i>	<i>13.2%</i>	<i>38.7%</i>	<i>10.8%</i>	<i>32.8%</i>	<i>4.6%</i>	<i>9.7%</i>	<i>11.3%</i>
<i>Available Seats</i>	<i>-171</i>	<i>-167</i>	<i>-132</i>	<i>-102</i>	<i>-156</i>							
<u>With Change:</u>												
Number of Students	412	377	358	340	371							
<i>Percent of Building Occupied</i>	<i>99%</i>	<i>90%</i>	<i>86%</i>	<i>81%</i>	<i>89%</i>	<i>14.0%</i>	<i>31.1%</i>	<i>12.3%</i>	<i>38.8%</i>	<i>3.8%</i>	<i>12.8%</i>	<i>8.8%</i>
<i>Available Seats</i>	<i>6</i>	<i>41</i>	<i>60</i>	<i>78</i>	<i>47</i>							
Clarksburg Village Site #2 ES												
Maximum Number of Seats= 741												
<u>With Change:</u>												
Number of Students	589	732	717	702	732							
<i>Percent of Building Occupied</i>	<i>79%</i>	<i>99%</i>	<i>97%</i>	<i>95%</i>	<i>99%</i>	<i>17.5%</i>	<i>41.4%</i>	<i>14.3%</i>	<i>21.2%</i>	<i>5.5%</i>	<i>13.2%</i>	<i>13.8%</i>
<i>Available Seats</i>	<i>152</i>	<i>9</i>	<i>24</i>	<i>39</i>	<i>9</i>							
Wilson Wims ES												
Maximum Number of Seats= 752												
<u>No Change:</u>												
Number of Students	1236	1317	1320	1311	1330							
<i>Percent of Building Occupied</i>	<i>164%</i>	<i>175%</i>	<i>176%</i>	<i>174%</i>	<i>177%</i>	<i>15.1%</i>	<i>43.5%</i>	<i>13.4%</i>	<i>21.5%</i>	<i>6.5%</i>	<i>10.7%</i>	<i>10.1%</i>
<i>Available Seats</i>	<i>-484</i>	<i>-565</i>	<i>-568</i>	<i>-559</i>	<i>-578</i>							
<u>With Change:</u>												
Number of Students	819	783	785	779	791							
<i>Percent of Building Occupied</i>	<i>109%</i>	<i>104%</i>	<i>104%</i>	<i>104%</i>	<i>105%</i>	<i>12.8%</i>	<i>43.5%</i>	<i>10.7%</i>	<i>24.9%</i>	<i>8.1%</i>	<i>7.4%</i>	<i>8.5%</i>
<i>Available Seats</i>	<i>-67</i>	<i>-31</i>	<i>-33</i>	<i>-27</i>	<i>-39</i>							

In the 2019–2020 school year, the new school would open with Grades K–4 students only. Grade 5 students would be grandfathered at Cedar Grove and Wilson Wims elementary schools. In the 2020–2021 school year, Grade 5 students would articulate to Clarksburg Village Site #2 ES. The enrollment at Clarksburg Village Site #2 ES reflects 30 special education students.

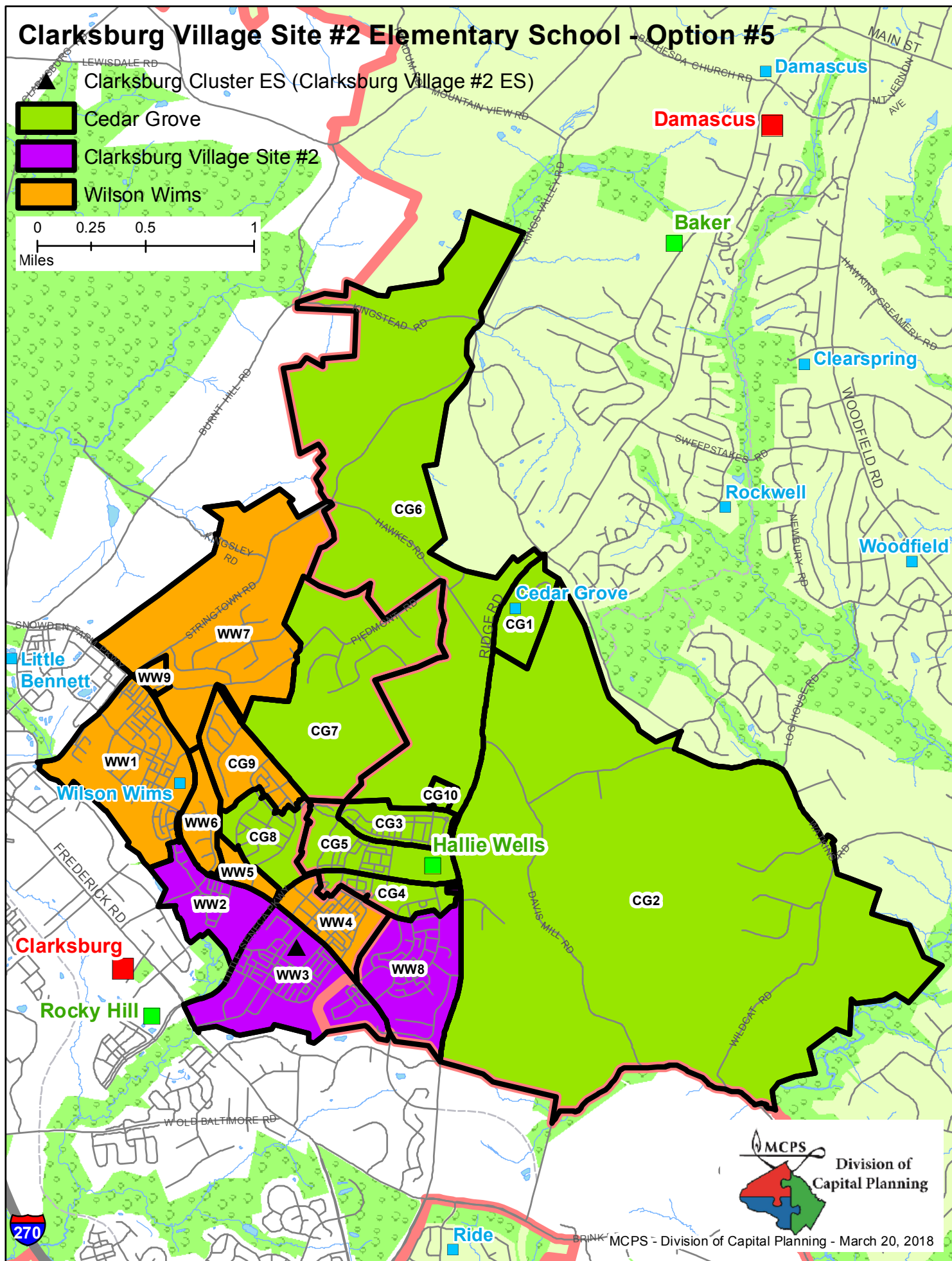
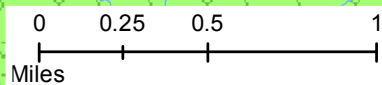
Clarksburg Village Site #2 Elementary School - Option #5

▲ Clarksburg Cluster ES (Clarksburg Village #2 ES)

■ Cedar Grove

■ Clarksburg Village Site #2

■ Wilson Wims



Option #5

Clarksburg Village Site #2 Elementary School

Boundary Study

March 21, 2018

Reassign Zones WW2, WW3, and WW8 from Wilson Wims ES to Clarksburg Village Site #2 ES
Reassign Zone CG9 from Cedar Grove ES to Wilson Wims ES

School	Projected Number of Students					2017-18						
						Race/Ethnic Composition						
	2019-20	2020-21	2021-22	2022-23	2023-24	% Afr. Amer.	% Asian	% Hispanic	% White	% 2 or More	% FARMS	% ESOL
Cedar Grove ES												
Maximum Number of Seats= 418												
<u>No Change:</u>												
Number of Students	589	585	550	520	574							
<i>Percent of Building Occupied</i>	141%	140%	132%	124%	137%	13.2%	38.7%	10.8%	32.8%	4.6%	9.7%	11.3%
<i>Available Seats</i>	-171	-167	-132	-102	-156							
<u>With Change:</u>												
Number of Students	494	472	444	420	463							
<i>Percent of Building Occupied</i>	118%	113%	106%	100%	111%	13.2%	39.1%	12.0%	30.8%	4.9%	9.6%	12.0%
<i>Available Seats</i>	-76	-54	-26	-2	-45							
Clarksburg Village Site #2 ES												
Maximum Number of Seats= 741												
<u>With Change:</u>												
Number of Students	570	726	727	722	733							
<i>Percent of Building Occupied</i>	77%	98%	98%	98%	99%	16.6%	46.3%	12.2%	18.6%	6.3%	11.3%	11.6%
<i>Available Seats</i>	171	15	14	19	8							
Wilson Wims ES												
Maximum Number of Seats= 752												
<u>No Change:</u>												
Number of Students	1236	1317	1320	1311	1330							
<i>Percent of Building Occupied</i>	164%	175%	176%	174%	177%	15.1%	43.5%	13.4%	21.5%	6.5%	10.7%	10.1%
<i>Available Seats</i>	-484	-565	-568	-559	-578							
<u>With Change:</u>												
Number of Students	791	734	729	719	738							
<i>Percent of Building Occupied</i>	105%	98%	97%	96%	98%	13.5%	39.7%	13.2%	27.7%	6.0%	10.0%	8.3%
<i>Available Seats</i>	-39	18	23	33	14							

In the 2019-2020 school year, the new school would open with Grades K-4 students only. Grade 5 students would be grandfathered at Cedar Grove and Wilson Wims elementary schools. In the 2020-2021 school year, Grade 5 students would articulate to Clarksburg Village Site #2 ES. The enrollment at Clarksburg Village Site #2 ES reflects 30 special education students.

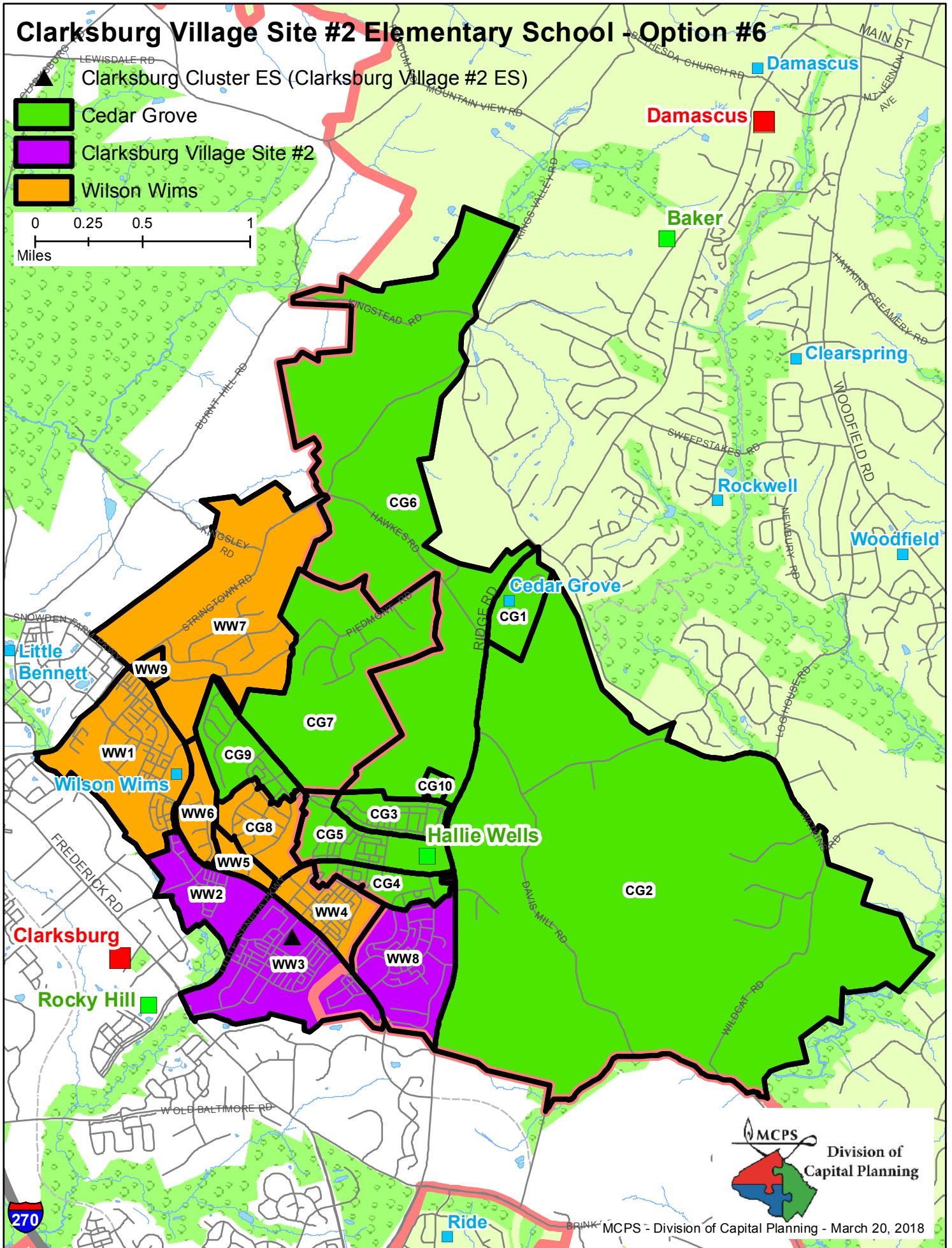
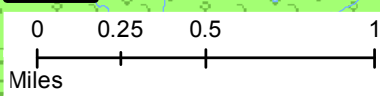
Clarksburg Village Site #2 Elementary School - Option #6

▲ Clarksburg Cluster ES (Clarksburg Village #2 ES)

■ Cedar Grove

■ Clarksburg Village Site #2

■ Wilson Wims



Option #6

Clarksburg Village Site #2 Elementary School

Boundary Study

March 21, 2018

Reassign Zones WW2, WW3, and WW8 from Wilson Wims ES to Clarksburg Village Site #2 ES
Reassign Zone CG8 from Cedar Grove ES to Wilson Wims ES

School	Projected Number of Students					2017-18						
						Race/Ethnic Composition						
	2019-20	2020-21	2021-22	2022-23	2023-24	% Afr. Amer.	% Asian	% Hispanic	% White	% 2 or More	% FARMS	% ESOL
Cedar Grove ES												
Maximum Number of Seats= 418												
<u>No Change:</u>												
Number of Students	589	585	550	520	574							
<i>Percent of Building Occupied</i>	141%	140%	132%	124%	137%	13.2%	38.7%	10.8%	32.8%	4.6%	9.7%	11.3%
<i>Available Seats</i>	-171	-167	-132	-102	-156							
<u>With Change:</u>												
Number of Students	507	487	458	433	478							
<i>Percent of Building Occupied</i>	121%	117%	110%	104%	114%	11.8%	39.2%	10.7%	33.7%	4.6%	8.6%	12.2%
<i>Available Seats</i>	-89	-69	-40	-15	-60							
Clarksburg Village Site #2 ES												
Maximum Number of Seats= 741												
<u>With Change:</u>												
Number of Students	570	726	727	722	733							
<i>Percent of Building Occupied</i>	77%	98%	98%	98%	99%	16.6%	46.3%	12.2%	18.6%	6.3%	11.3%	11.6%
<i>Available Seats</i>	171	15	14	19	8							
Wilson Wims ES												
Maximum Number of Seats= 752												
<u>No Change:</u>												
Number of Students	1236	1317	1320	1311	1330							
<i>Percent of Building Occupied</i>	164%	175%	176%	174%	177%	15.1%	43.5%	13.4%	21.5%	6.5%	10.7%	10.1%
<i>Available Seats</i>	-484	-565	-568	-559	-578							
<u>With Change:</u>												
Number of Students	778	719	715	706	724							
<i>Percent of Building Occupied</i>	103%	96%	95%	94%	96%	14.5%	39.6%	14.2%	25.4%	6.3%	10.9%	8.1%
<i>Available Seats</i>	-26	33	37	46	28							

In the 2019-2020 school year, the new school would open with Grades K-4 students only. Grade 5 students would be grandfathered at Cedar Grove and Wilson Wims elementary schools. In the 2020-2021 school year, Grade 5 students would articulate to Clarksburg Village Site #2 ES. The enrollment at Clarksburg Village Site #2 ES reflects 30 special education students.

Summary of Options by School

Clarksburg Village Site #2 Elementary School

Boundary Study

March 21, 2018

School/Option	Projected Number of Students					2017-18						
						Race/Ethnic Composition						
	2019-20	2020-21	2021-22	2022-23	2023-24	% Afr. Amer.	% Asian	% Hispanic	% White	% 2 or More	% FARMS	% ESOL
Cedar Grove ES												
Maximum Number of Seats=418												
Current Boundaries												
Number of Students	589	585	550	520	574							
Percent of Building Occupied	141%	140%	132%	124%	137%	13.2%	38.7%	10.8%	32.8%	4.6%	9.7%	11.3%
Available Seats	-171	-167	-132	-102	-156							
Option #1												
Number of Students	589	585	550	520	574							
Percent of Building Occupied	141%	140%	132%	124%	137%	13.2%	38.7%	10.8%	32.8%	4.6%	9.7%	11.3%
Available Seats	-171	-167	-132	-102	-156							
Option #2												
Number of Students	412	374	352	333	367							
Percent of Building Occupied	99%	90%	84%	80%	88%	11.4%	40.0%	12.2%	31.5%	5.0%	8.2%	13.4%
Available Seats	6	44	66	85	51							
Option #3												
Number of Students	538	524	493	465	514							
Percent of Building Occupied	129%	125%	118%	111%	123%	13.1%	37.6%	10.4%	33.9%	4.9%	9.2%	10.1%
Available Seats	-120	-106	-75	-47	-96							
Option #4												
Number of Students	412	377	358	340	371							
Percent of Building Occupied	99%	90%	86%	81%	89%	14.0%	31.1%	12.3%	38.8%	3.8%	12.8%	8.8%
Available Seats	6	41	60	78	47							
Option #5												
Number of Students	494	472	444	420	463							
Percent of Building Occupied	118%	113%	106%	100%	111%	13.2%	39.1%	12.0%	30.8%	4.9%	9.6%	12.0%
Available Seats	-76	-54	-26	-2	-45							
Option #6												
Number of Students	507	487	458	433	478							
Percent of Building Occupied	121%	117%	110%	104%	114%	11.8%	39.2%	10.7%	33.7%	4.6%	8.6%	12.2%
Available Seats	-89	-69	-40	-15	-60							

Summary of Options by School

Clarksburg Village Site #2 Elementary School

Boundary Study

March 21, 2018

School/Option	Projected Number of Students					2017-18 Race/Ethnic Composition						
	2019-20	2020-21	2021-22	2022-23	2023-24	% Afr. Amer.	% Asian	% Hispanic	% White	% 2 or More	% FARMS	% ESOL
	Clarksburg Village Site #2 ES											
Maximum Number of Seats=741												
Option #1												
Number of Students	605	765	767	762	773							
<i>Percent of Building Occupied</i>	82%	103%	104%	103%	104%	15.4%	51.0%	12.4%	15.8%	5.4%	10.1%	11.3%
<i>Available Seats</i>	136	-24	-26	-21	-32							
Option #2												
Number of Students	605	765	767	762	773							
<i>Percent of Building Occupied</i>	82%	103%	104%	103%	104%	15.4%	51.0%	12.4%	15.8%	5.4%	10.1%	11.3%
<i>Available Seats</i>	136	-24	-26	-21	-32							
Option #3												
Number of Students	551	692	690	683	697							
<i>Percent of Building Occupied</i>	74%	93%	93%	92%	94%	15.7%	48.6%	12.7%	17.2%	5.8%	11.6%	12.4%
<i>Available Seats</i>	190	49	51	58	44							
Option #4												
Number of Students	589	732	717	702	732							
<i>Percent of Building Occupied</i>	79%	99%	97%	95%	99%	17.5%	41.4%	14.3%	21.2%	5.5%	13.2%	13.8%
<i>Available Seats</i>	152	9	24	39	9							
Option #5												
Number of Students	570	726	727	722	733							
<i>Percent of Building Occupied</i>	77%	98%	98%	98%	99%	16.6%	46.3%	12.2%	18.6%	6.3%	11.3%	11.6%
<i>Available Seats</i>	171	15	14	19	8							
Option #6												
Number of Students	570	726	727	722	733							
<i>Percent of Building Occupied</i>	77%	98%	98%	98%	99%	16.6%	46.3%	12.2%	18.6%	6.3%	11.3%	11.6%
<i>Available Seats</i>	171	15	14	19	8							

Summary of Options by School

Clarksburg Village Site #2 Elementary School

Boundary Study

March 21, 2018

School/Option	Projected Number of Students					2017-18 Race/Ethnic Composition						
	2019-20	2020-21	2021-22	2022-23	2023-24	% Afr. Amer.	% Asian	% Hispanic	% White	% 2 or More	% FARMS	% ESOL
	Wilson Wims ES											
Maximum Number of Seats=752												
Current Boundaries												
Number of Students	1,236	1,317	1,320	1,311	1,330							
<i>Percent of Building Occupied</i>	164%	175%	176%	174%	177%	15.1%	43.5%	13.4%	21.5%	6.5%	10.7%	10.1%
<i>Available Seats</i>	-484	-565	-568	-559	-578							
Option #1												
Number of Students	661	582	583	579	587							
<i>Percent of Building Occupied</i>	88%	77%	78%	77%	78%	14.8%	34.0%	14.7%	28.8%	7.8%	11.5%	8.5%
<i>Available Seats</i>	91	170	169	173	165							
Option #2												
Number of Students	838	792	781	766	794							
<i>Percent of Building Occupied</i>	111%	105%	104%	102%	106%	15.3%	34.7%	12.8%	30.6%	6.6%	11.7%	8.2%
<i>Available Seats</i>	-86	-40	-29	-14	-42							
Option #3												
Number of Students	766	716	718	713	723							
<i>Percent of Building Occupied</i>	102%	95%	95%	95%	96%	14.5%	39.0%	14.2%	25.8%	6.6%	10.2%	9.0%
<i>Available Seats</i>	-14	36	34	39	29							
Option #4												
Number of Students	819	783	785	779	791							
<i>Percent of Building Occupied</i>	109%	104%	104%	104%	105%	12.8%	43.5%	10.7%	24.9%	8.1%	7.4%	8.5%
<i>Available Seats</i>	-67	-31	-33	-27	-39							
Option #5												
Number of Students	791	734	729	719	738							
<i>Percent of Building Occupied</i>	105%	98%	97%	96%	98%	13.5%	39.7%	13.2%	27.7%	6.0%	10.0%	8.3%
<i>Available Seats</i>	-39	18	23	33	14							
Option #6												
Number of Students	778	719	715	706	724							
<i>Percent of Building Occupied</i>	103%	96%	95%	94%	96%	14.5%	39.6%	14.2%	25.4%	6.3%	10.9%	8.1%
<i>Available Seats</i>	-26	33	37	46	28							

In the 2019-2020 school year, the new school would open with Grades K-4 students only. Grade 5 students would be grandfathered at Cedar Grove and Wilson Wims elementary schools. In the 2020-2021 school year, Grade 5 students would articulate to Clarksburg Village Site #2 ES. The enrollment at Clarksburg Village Site #2 ES reflects 30 special education students.