


Office of the Superintendent of Schools
MONTGOMERY COUNTY PUBLIC SCHOOLS
Rockville, Maryland

November 27, 2018

MEMORANDUM

To: Members of the Board of Education

From: Jack R. Smith, Superintendent of Schools 

Subject: Clarksburg Village Site #2 Elementary School Boundaries

On November 27, 2017, the Board of Education authorized a boundary study to establish the service area for the new Clarksburg Village Site #2 Elementary School scheduled to open in September 2019. Now under construction, the new elementary school will be located at 22500 Sweetspire Drive in Clarksburg, Maryland. The opening of Clarksburg Village Site #2 Elementary School will address student enrollment growth and space deficits at Cedar Grove and Wilson Wims elementary schools. The scope of the boundary study did not include any changes to middle or high school boundaries.

WHEREAS, In March 2018, the superintendent of schools convened a Boundary Advisory Committee that included representatives from Cedar Grove and Wilson Wims elementary schools, the Clarksburg Cluster coordinators, and representatives from the Asian Pacific American Student Achievement Action Group and the National Association for the Advancement of Colored People; and

WHEREAS, The Boundary Advisory Committee met from March 2018 through May 2018 to review six boundary options to create the service area for Clarksburg Village Site #2 Elementary School; and

WHEREAS, On July 6, 2018, the Boundary Advisory Committee submitted a report to the superintendent of schools and Board of Education that included member evaluations and position papers; and

WHEREAS, On November 1 and 16, 2018, the Board of Education conducted work sessions to consider the superintendent of schools' recommendation for the Clarksburg Village Site #2 Elementary School boundaries; and

WHEREAS, The Board of Education identified one alternative to the superintendent of schools' recommendation for the Clarksburg Village Site #2 Elementary School boundaries; and

WHEREAS, On November 8 and 12, 2018, the Board of Education conducted public hearings in accordance with Board of Education Policy FAA, *Educational Facilities Planning*, and Montgomery County Public Schools Regulation FAA-RA, *Long-range Educational Facilities Planning*, on the superintendent of schools' recommendation and the Board of Education alternative; now therefore be it

Resolved, That the following reassignments be made as indicated on the attached maps:

- Reassign Zones WW3, WW4, and WW8 from Wilson Wims Elementary School to Clarksburg Village Site #2 Elementary School;
- Reassign Zones CG8 and CG9 from Cedar Grove Elementary School to Wilson Wims Elementary School;

and be it further

Resolved, That the boundary changes be phased beginning with Grades K–4 students from the reassigned areas to Clarksburg Village Site #2 and Cedar Grove elementary schools in September 2019, and Grades K–5 students in September 2020, and thereafter.

Attachments

JRS:AMZ:JS:ds

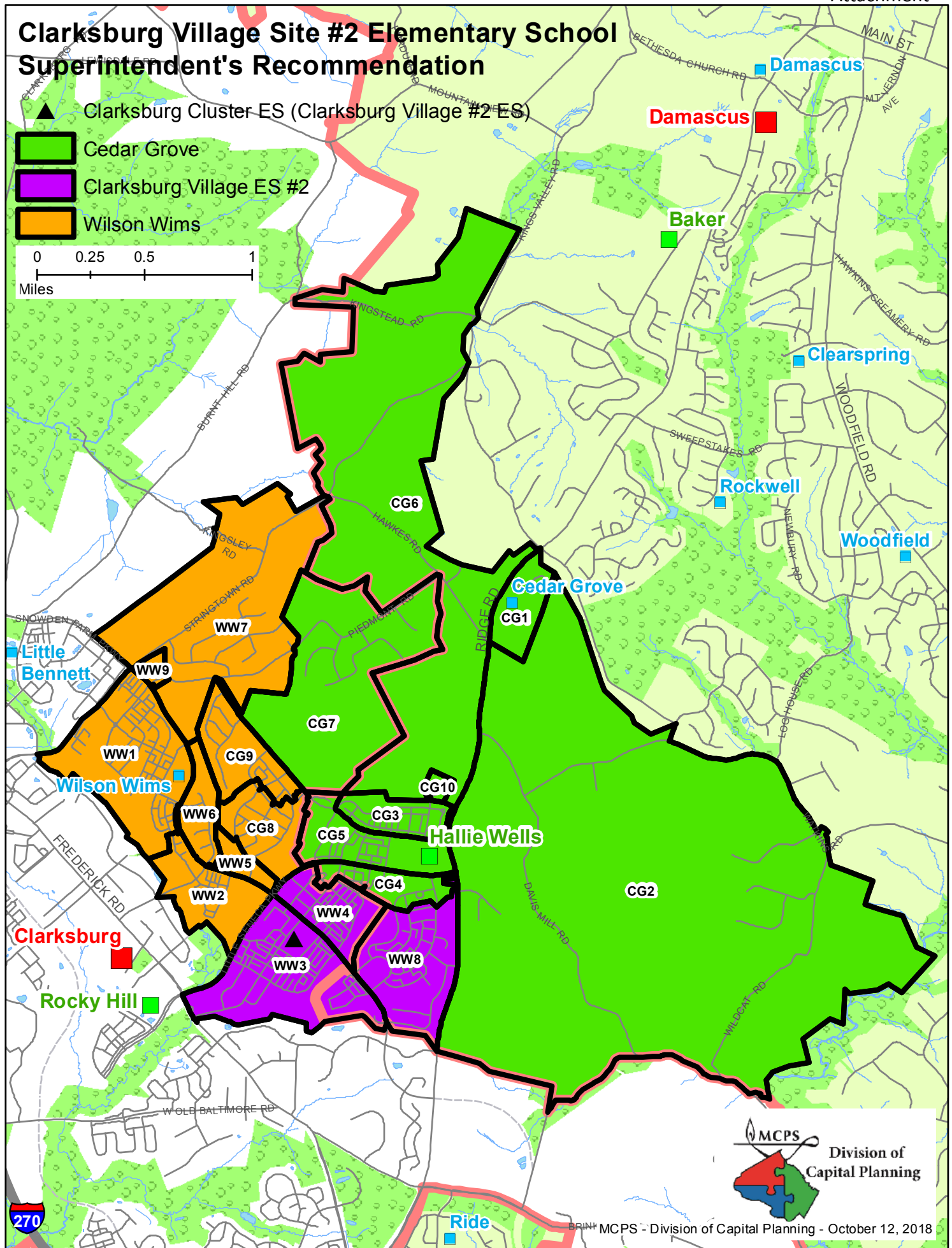
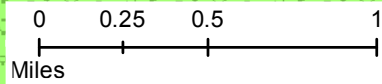
Clarksburg Village Site #2 Elementary School Superintendent's Recommendation

▲ Clarksburg Cluster ES (Clarksburg Village #2 ES)

■ Cedar Grove

■ Clarksburg Village ES #2

■ Wilson Wims



Clarksburg Village Site #2 Elementary School Superintendent's Recommendation

Clarksburg Village Site #2

Cedar Grove To Wims Annexation

Clarksburg Village #2 Boundary

Cedar Grove ES

Clarksburg Village Site #2

Wilson Wims ES

