

Clarksburg # 9 Boundary Study

Estudio Límites Geográficos

Round Two Options Meeting

Reunión de la segunda ronda de opciones

April 27 and 28, 2022

<https://www.montgomeryschoolsmd.org/departments/planning/ClarksburgES9BoundaryStudy.aspx>

Welcome / Bienvenidos

- This meeting is a Zoom Webinar
- Camera and microphone will be available for panelists only
- Please use the Q&A function to ask questions anytime during the meeting
- Questions will be answered at the end of the presentation

- Esta reunión es un seminario web de Zoom
- La cámara y el micrófono estarán disponibles solo para los panelistas
- Utilice la función de preguntas y respuestas para agregar sus preguntas en cualquier momento durante la presentación
- Las preguntas serán respondidas al final de la presentación

Agenda / Agenda

- Current Projections and Available Seats
- Round 1 Survey Results
- Round 2 Options
- Interactive Map
- Questions and Answers

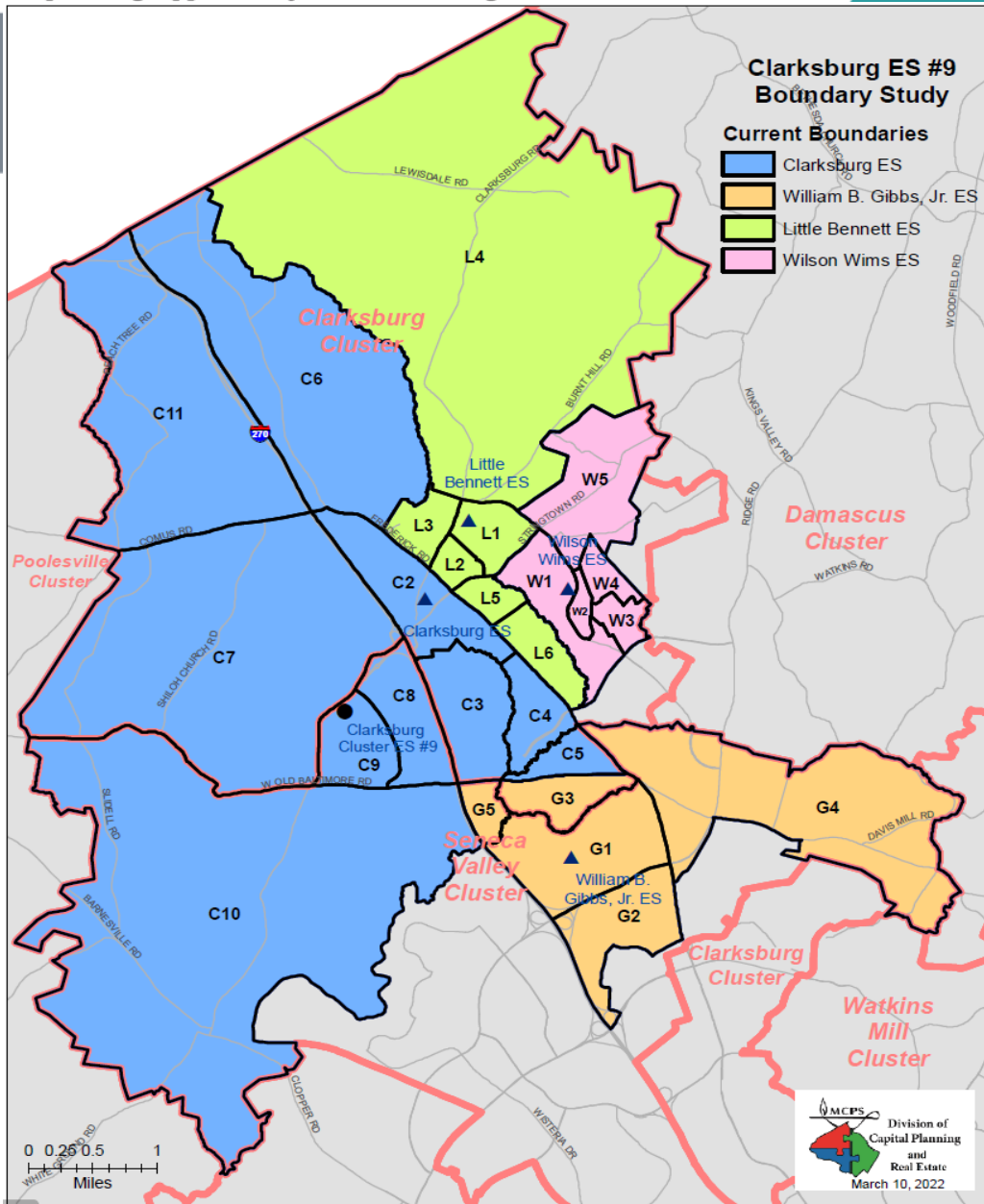
- Proyecciones actuales y asientos disponibles
- Resultados de la segunda encuesta
- Opciones de la segunda ronda
- Mapa interactivo
- Preguntas y respuestas



MONTGOMERY COUNTY PUBLIC SCHOOLS

Expanding Opportunity and Unleashing Potential

Current Boundaries



Map of Boundary Study Area / Mapa del área de estudio de límites

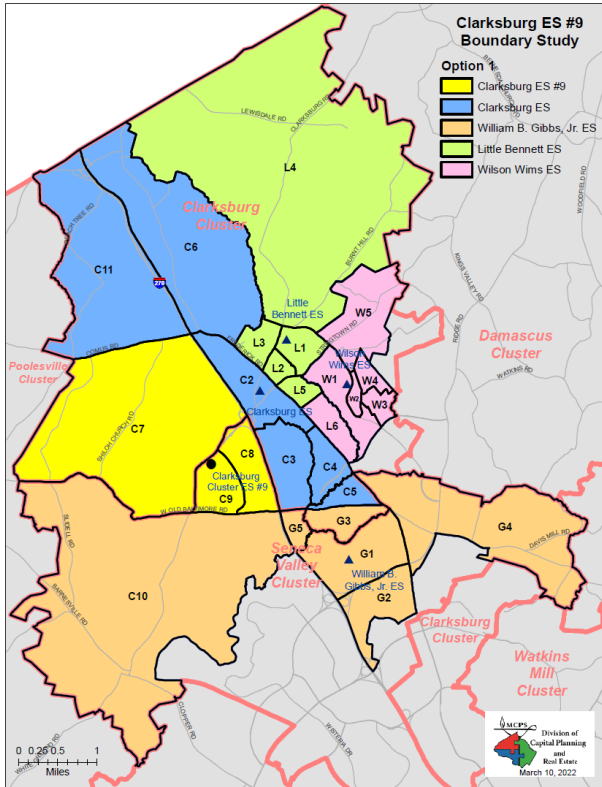
Current Projections and Available Seats/ Proyecciones actuales y asientos disponibles

Schools		Official* 2021-2022	Projections					
			2022-2023	2023-2024	2024-2025	2025-2026	2026-2027	2027-2028
Clarksburg ES	Program Capacity	342	342	342	342	342	342	342
	Enrollment	771	875	965	962	977	992	983
	Available Space	-429	-533	-623	-620	-635	-650	-641
Clarksburg #9 ES	Program Capacity	0	0	721	721	721	721	721
	Enrollment	0	0	0	0	0	0	0
	Available Space	0	0	721	721	721	721	721
William B. Gibbs, Jr. ES	Program Capacity	726	726	726	726	726	726	726
	Enrollment	516	552	550	574	579	592	592
	Available Space	210	174	176	152	147	134	134
Little Bennett ES	Program Capacity	621	621	621	621	621	621	621
	Enrollment	642	627	613	595	577	561	570
	Available Space	-21	-6	8	26	44	60	51
Wilson Wims ES	Program Capacity	739	739	739	739	739	739	739
	Enrollment	598	597	595	582	607	624	618
	Available Space	141	142	144	157	132	115	121

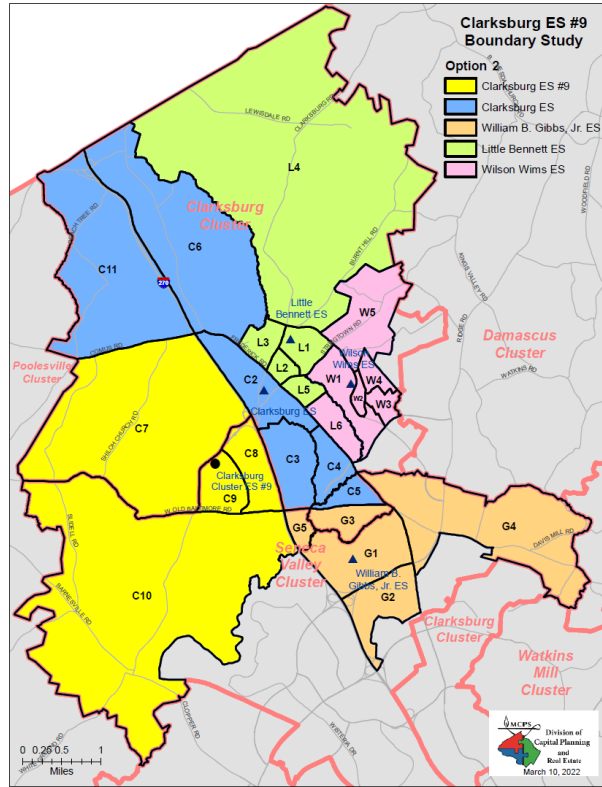
* Source: Office of Shared Accountability, as of September 30th, 2021

Round 1 Options/ Opciones de Ronda 1

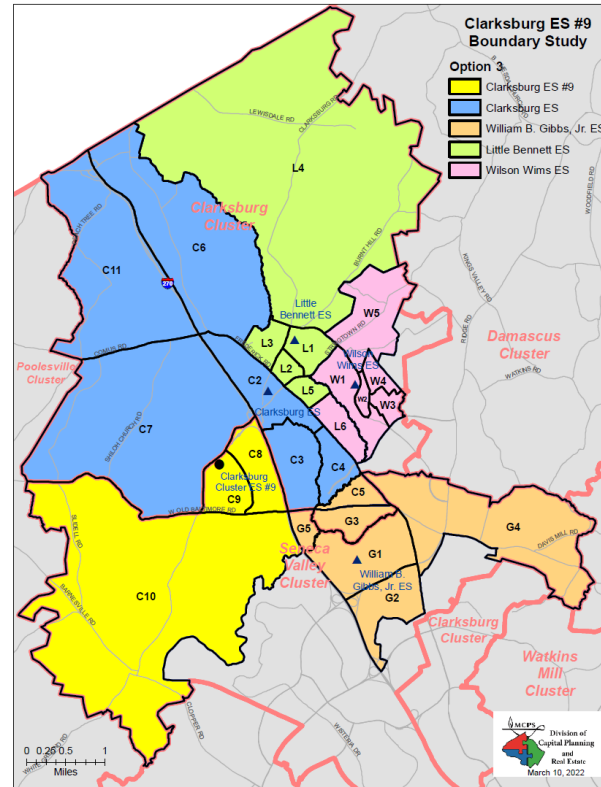
Option 1



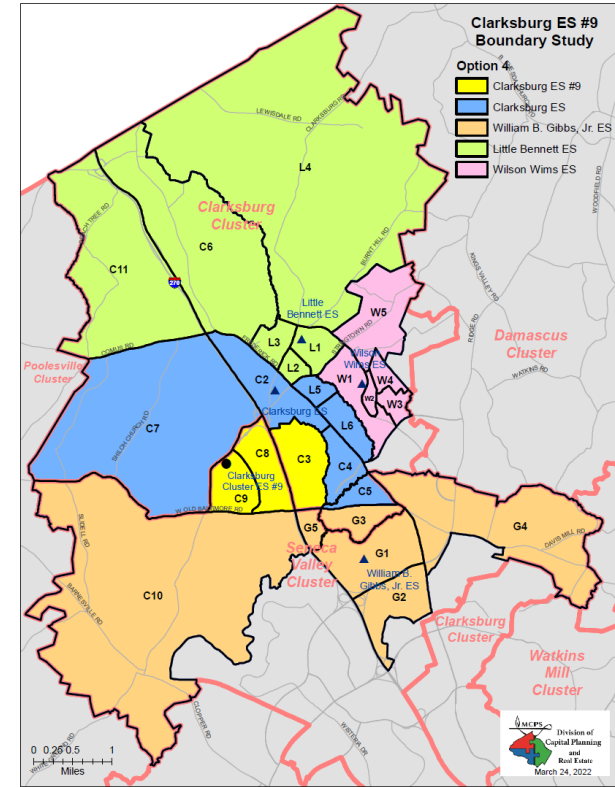
Option 2



Option 3



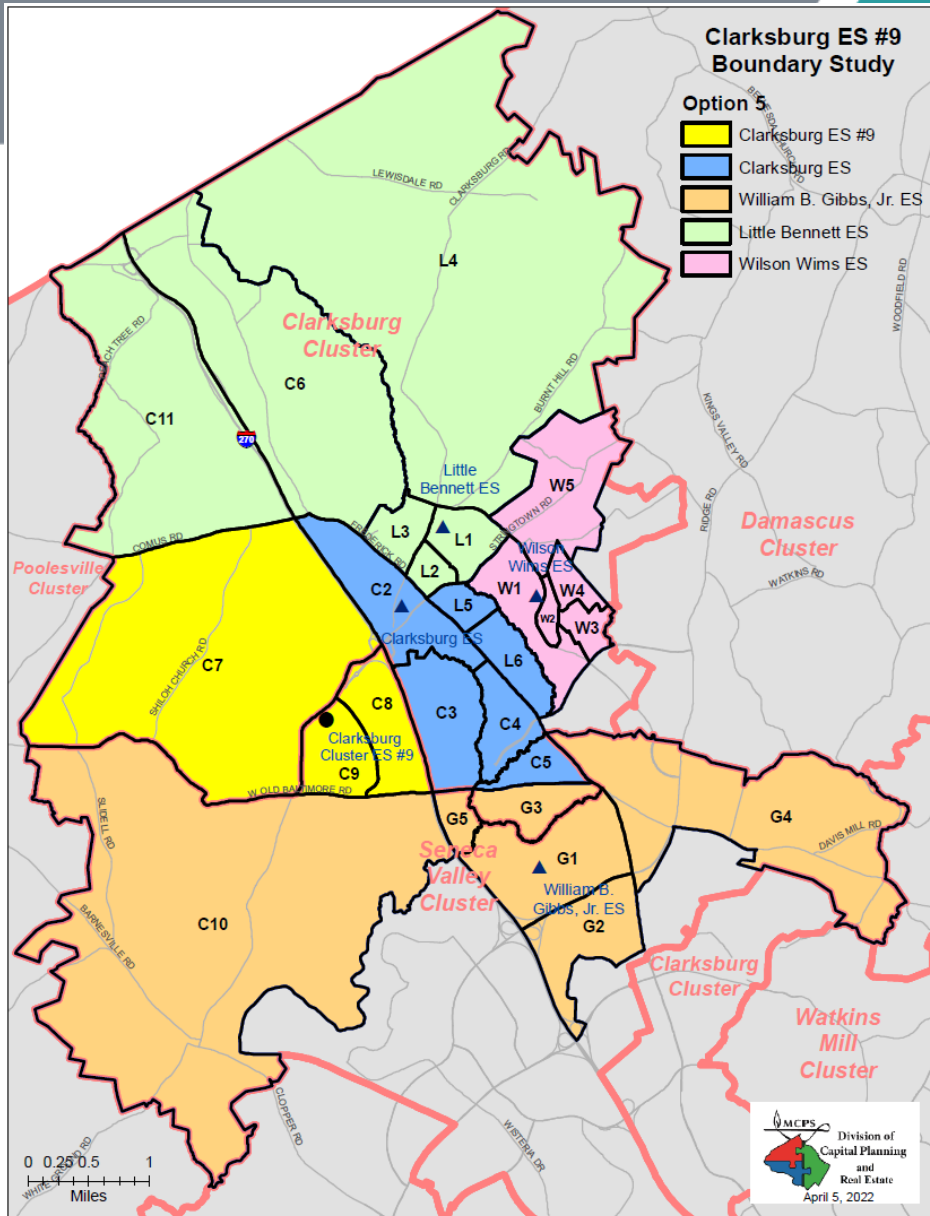
Option 4



Guiding Parameters for Option Development/ Parámetros guía para el desarrollo de opciones

- Four policy factors
 - *Demographic Characteristics of Student Population*
 - *Geography*
 - *Facility Utilization*
 - *Stability of School*
 - Maintain walkers
 - Avoid triple split-articulations
 - Grandfather Grade 5 students
- Cuatro factores de la política
 - *Características demográficas de la población estudiantil*
 - *Geografía*
 - *Utilización de instalaciones*
 - *Estabilidad de la escuela*
 - Mantener caminantes
 - Evitar las articulaciones triple divididas
 - Mantener a los estudiantes de quinto grado en sus escuelas actuales

Option 5 / Opción 5



Reassign/Reasignar

Zones/Zonas C7, C8 and/y C9
from/de Clarksburg ES to/a Clarksburg #9 ES

Zones/Zonas L5 and/y L6
from/de Little Bennett ES to/a Clarksburg ES

Zones/Zonas C6 and/y C11
from/de Clarksburg ES to/a Little Bennett ES

Zone/Zona C10
from/de Clarksburg ES to/a William B. Gibbs, Jr. ES

Option 5 / Opción 5

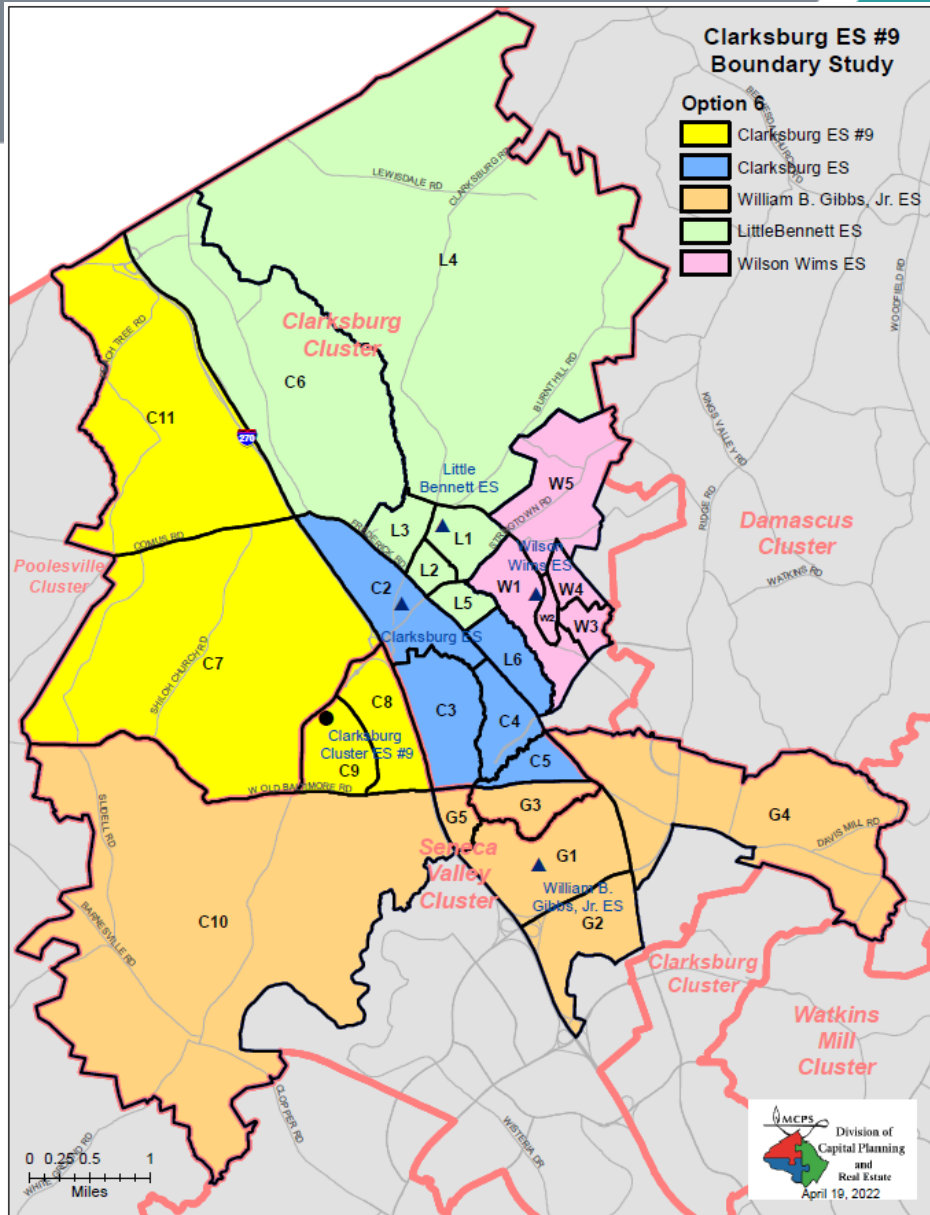
Proposed Elementary School Boundary Reassignments

School	2021-2022					Race/Ethnic Composition						
	2023-24	2024-25	2025-26	2026-27	2027-28	% Afr. Amer.	% Asian	% Hispanic	% White	% 2 or More	% FARMS	% ESOL
Clarksburg ES												
Maximum Number of Seats=	342											
<i>No Change:</i>												
Number of Students	965	962	977	992	983	30.0%	37.0%	14.9%	11.2%	6.5%	21.0%	19.5%
Percent of Building Occupied	282%	281%	286%	290%	287%							
Available Seats	-623	-620	-635	-650	-641							
<i>With Change:</i>												
Number of Students	554	450	412	386	348	22.9%	42.5%	16.4%	13.5%	4.0%	21.5%	15.3%
Percent of Building Occupied	162%	132%	120%	113%	102%							
Available Seats	-212	-108	-70	-44	-6							
Clarksburg ES #9												
Maximum Number of Seats=	721											
<i>No Change:</i>												
Number of Students	0	0	0	0	0	NA	NA	NA	NA	NA	NA	NA
Percent of Building Occupied	0%	0%	0%	0%	0%							
Available Seats	721	721	721	721	721							
<i>With Change:</i>												
Number of Students	421	521	564	602	629	33.9%	38.2%	12.6%	9.8%	5.3%	19.2%	19.7%
Percent of Building Occupied	58%	72%	78%	83%	87%							
Available Seats	300	200	157	119	92							
William B. Gibbs, Jr. ES												
Maximum Number of Seats=	726											
<i>No Change:</i>												
Number of Students	550	574	579	592	592	32.6%	27.1%	19.6%	15.9%	4.7%	31.6%	18.0%
Percent of Building Occupied	76%	79%	80%	82%	82%							
Available Seats	176	152	147	134	134							
<i>With Change:</i>												
Number of Students	587	623	637	658	663	31.2%	25.9%	20.3%	16.4%	5.8%	31.8%	18.2%
Percent of Building Occupied	81%	86%	88%	91%	91%							
Available Seats	139	103	89	68	63							
Little Bennett ES												
Maximum Number of Seats=	621											
<i>No Change:</i>												
Number of Students	613	595	577	561	570	26.8%	27.7%	18.4%	20.4%	5.9%	23.1%	15.6%
Percent of Building Occupied	99%	96%	93%	90%	92%							
Available Seats	8	26	44	60	51							
<i>With Change:</i>												
Number of Students	566	537	520	499	505	28.3%	26.5%	18.4%	19.3%	6.9%	23.3%	17.2%
Percent of Building Occupied	91%	86%	84%	80%	81%							
Available Seats	55	84	101	122	116							
Wilson Wims ES												
Maximum Number of Seats=	739											
<i>No Change:</i>												
Number of Students	595	582	607	624	618	21.9%	41.1%	13.0%	18.9%	4.3%	12.9%	7.5%
Percent of Building Occupied	81%	79%	82%	84%	84%							
Available Seats	144	157	132	115	121							

Student Reassignments	
From	To
Clarksburg ES	Clarksburg ES #9
Clarksburg ES	Little Bennett ES
Clarksburg ES	William B. Gibbs, Jr. ES
Little Bennett ES	Clarksburg ES

School	Demographic Changes				Utilization Range 2023-2027	Geography
	FARMS %		ESOL %			
	Current	Proposed Change	Current	Proposed Change		
Clarksburg ES	21.0%	21.5%	19.5%	15.3%	162%-102%	Contiguous
Clarksburg ES #9	NA	19.2%	NA	19.7%	58%-87%	Contiguous
William B. Gibbs ES	31.6%	31.8%	18.0%	18.2%	81%-91%	Contiguous
Little Bennett ES	23.1%	23.3%	15.6%	17.2%	91%-81%	Contiguous
Wilson Wims ES	12.9%	12.9%	7.5%	7.5%	81%-84%	Contiguous

Option 6 / Opción 6



Reassign/Reasignar

Zones/Zonas C7, C8, C9, and/y C11
from/de Clarksburg ES to/a Clarksburg #9 ES

Zone/Zona L6
from/de Little Bennett ES to/a Clarksburg ES

Zone/Zona C6
from/de Clarksburg ES to/a Little Bennett ES

Zone/Zona C10
from/de Clarksburg ES to/a William B. Gibbs, Jr. ES

Option 6 / Opción 6

Proposed Elementary School Boundary Reassignments

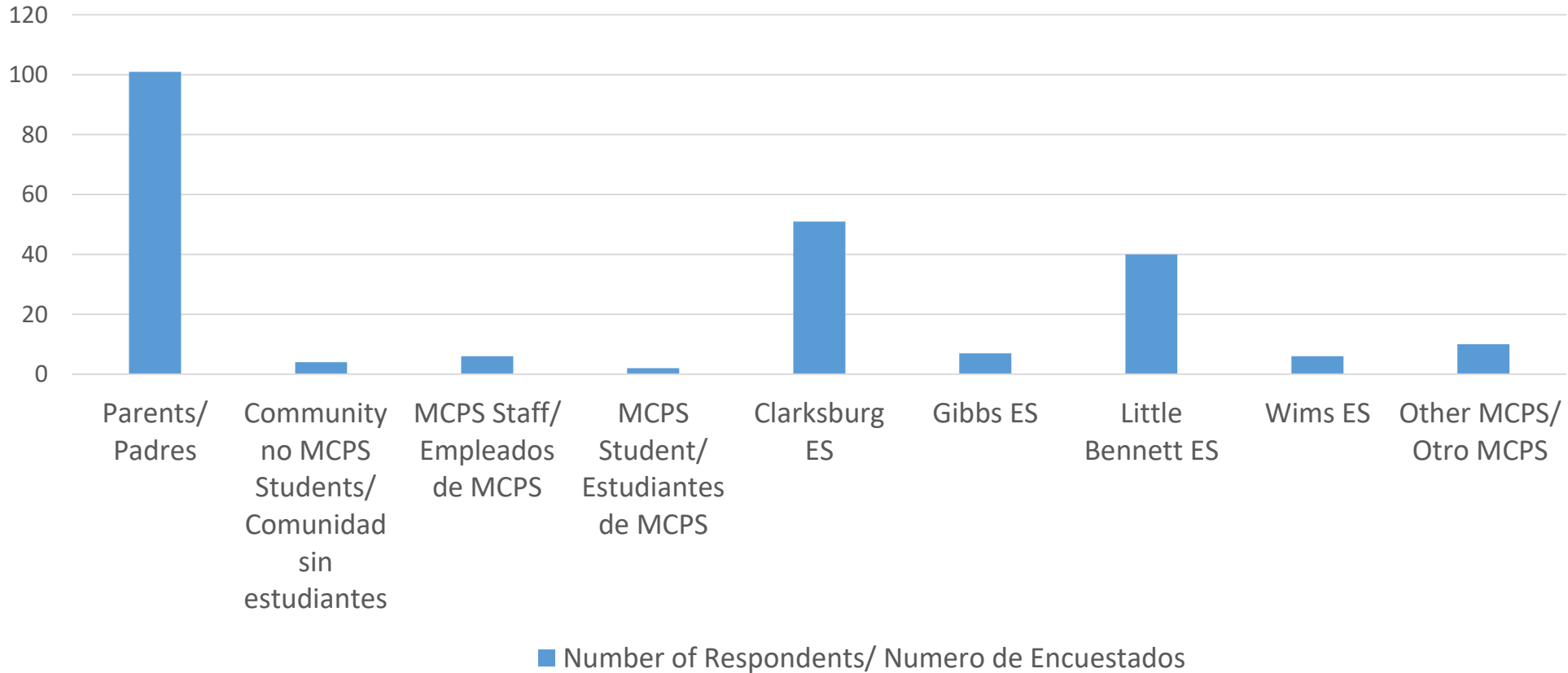
School	2021-2022					Race/Ethnic Composition							
	2023-24	2024-25	2025-26	2026-27	2027-28	% Afr. Amer.	% Asian	% Hispanic	% White	% 2 or More	% FARMS	% ESOL	
Clarksburg ES													
Maximum Number of Seats=	342												
<i>No Change:</i>													
Number of Students	965	962	977	992	983	30.0%	37.0%	14.9%	11.2%	6.5%	21.0%	19.5%	
Percent of Building Occupied	282%	281%	286%	290%	287%								
Available Seats	-623	-620	-635	-650	-641								
<i>With Change:</i>													
Number of Students	511	397	360	328	288	23.0%	40.5%	16.7%	14.4%	4.5%	18.5%	15.8%	
Percent of Building Occupied	149%	116%	105%	96%	84%								
Available Seats	-169	-55	-18	14	54								
Clarksburg ES #9													
Maximum Number of Seats=	721												
<i>No Change:</i>													
Number of Students	0	0	0	0	0	NA	NA	NA	NA	NA	NA	NA	
Percent of Building Occupied	0%	0%	0%	0%	0%								
Available Seats	721	721	721	721	721								
<i>With Change:</i>													
Number of Students	429	531	574	614	642	34.0%	37.1%	13.2%	9.5%	6.0%	22.1%	21.0%	
Percent of Building Occupied	60%	74%	80%	85%	89%								
Available Seats	292	190	147	107	79								
William B. Gibbs, Jr. ES													
Maximum Number of Seats=	726												
<i>No Change:</i>													
Number of Students	550	574	579	592	592	32.6%	27.1%	19.6%	15.9%	4.7%	31.6%	18.0%	
Percent of Building Occupied	76%	79%	80%	82%	82%								
Available Seats	176	152	147	134	134								
<i>With Change:</i>													
Number of Students	587	623	637	658	663	31.2%	25.9%	20.3%	16.4%	5.8%	31.8%	18.2%	
Percent of Building Occupied	81%	86%	88%	91%	91%								
Available Seats	139	103	89	68	63								
Little Bennett ES													
Maximum Number of Seats=	621												
<i>No Change:</i>													
Number of Students	613	595	577	561	570	26.8%	27.7%	18.4%	20.4%	5.9%	23.1%	15.6%	
Percent of Building Occupied	99%	96%	93%	90%	92%								
Available Seats	8	26	44	60	51								
<i>With Change:</i>													
Number of Students	601	580	562	545	552	26.8%	27.8%	18.4%	20.2%	6.0%	22.4%	15.4%	
Percent of Building Occupied	97%	93%	90%	88%	89%								
Available Seats	20	41	59	76	69								
Wilson Wims ES													
Maximum Number of Seats=	739												
<i>No Change:</i>													
Number of Students	595	582	607	624	618	21.9%	41.1%	13.0%	18.9%	4.3%	12.9%	7.5%	
Percent of Building Occupied	81%	79%	82%	84%	84%								
Available Seats	144	157	132	115	121								

Student Reassignments	
From	To
Clarksburg ES	Clarksburg ES #9
Clarksburg ES	Little Bennett ES
Clarksburg ES	William B. Gibbs, Jr. ES
Little Bennett ES	Clarksburg ES

School	Demographic Changes				Utilization Range 2023-2027	Geography
	FARMS %		ESOL %			
	Current	Proposed Change	Current	Proposed Change		
Clarksburg ES	21.0%	18.5%	19.5%	15.8%	149%-84%	Contiguous
Clarksburg ES #9	NA	22.1%	NA	21.0%	60%-89%	Contiguous
William B. Gibbs ES	31.6%	31.8%	18.0%	18.2%	81%-91%	Contiguous
Little Bennett ES	23.1%	22.4%	15.6%	15.4%	97%-89%	Contiguous
Wilson Wims ES	12.9%	12.9%	7.5%	7.5%	81%-84%	Contiguous

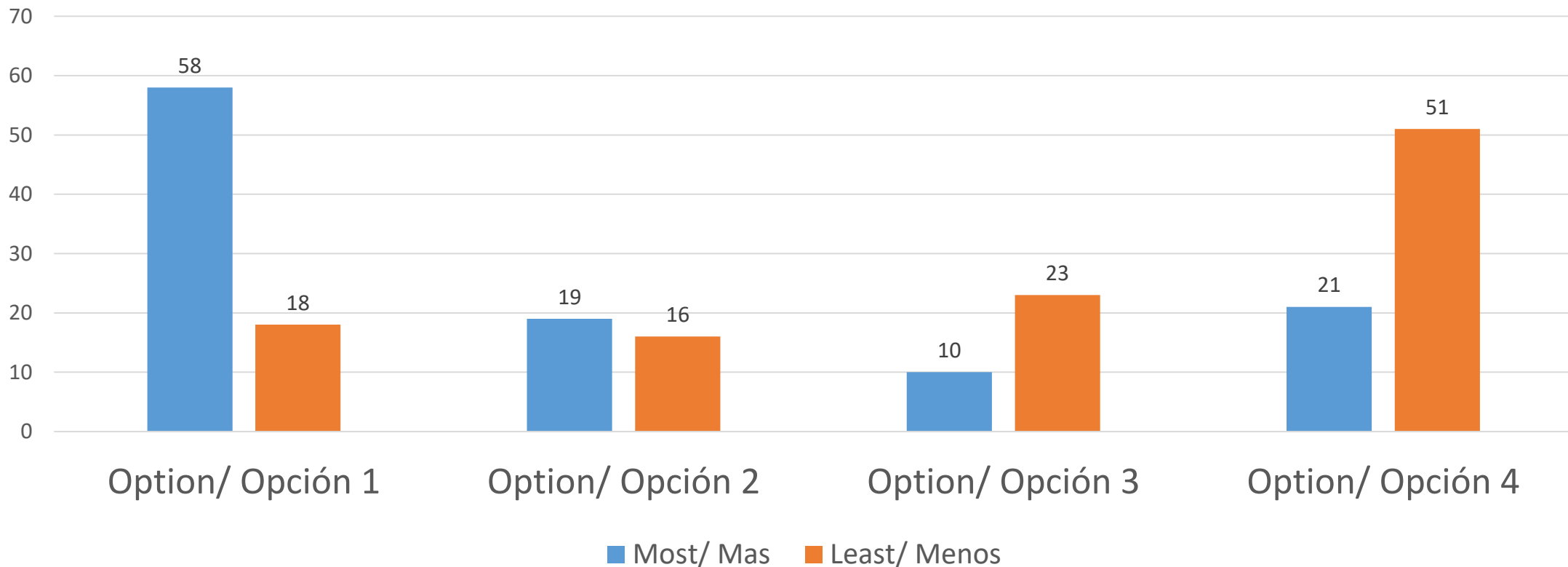
Round 1 Survey Results / Resultados de Encuesta

Respondents/Encuestados



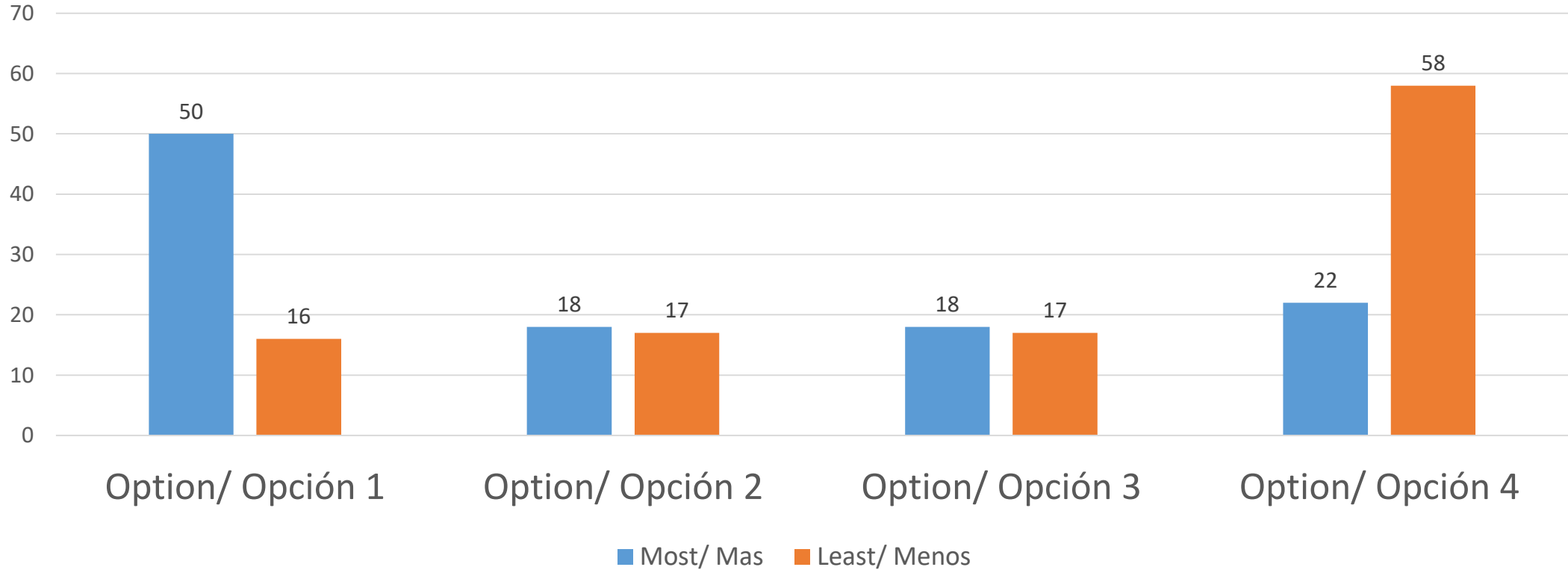
Round 1 Survey Results / Resultados de Encuesta

Advances the Geography Factor / Avanza el Factor de Geografía



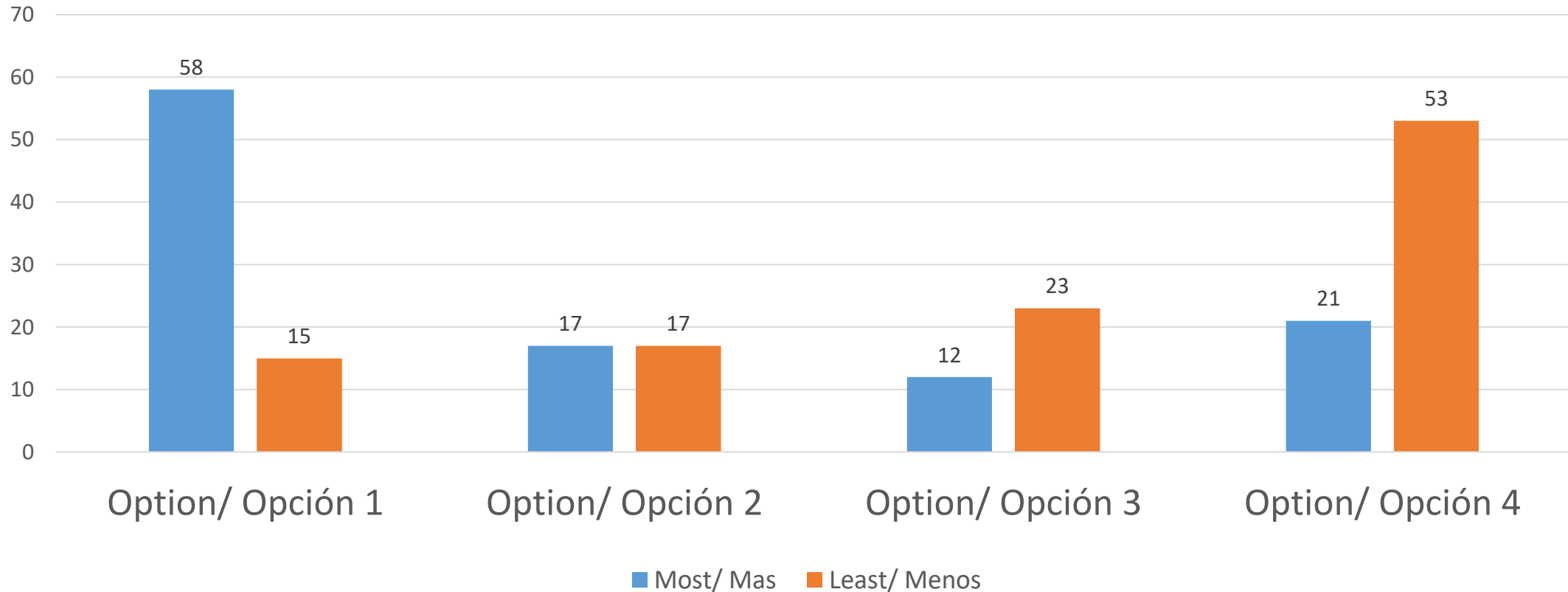
Round 1 Survey Results / Resultados de Encuesta

Advances the Demographic Factor / Avanza el Factor Demográfico



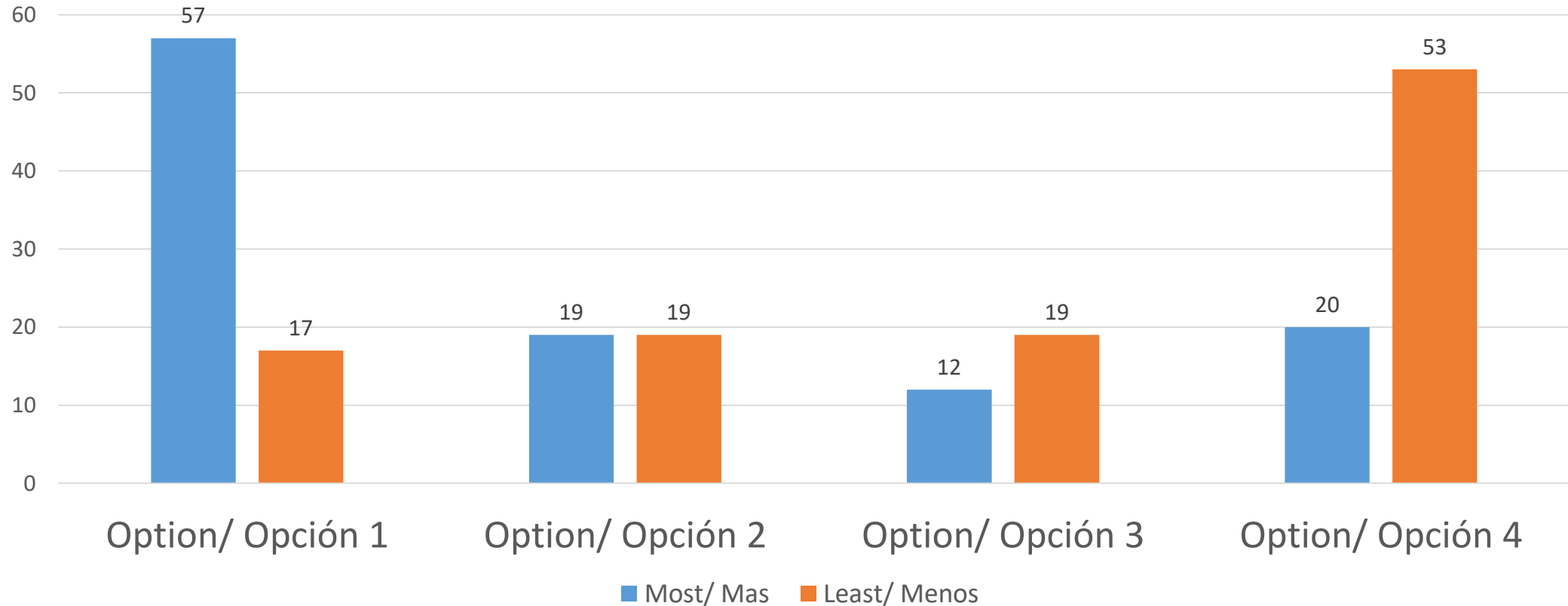
Round 1 Survey Results / Resultados de Encuesta

Advances the Utilization Factor / Avanza el Factor de Utilización



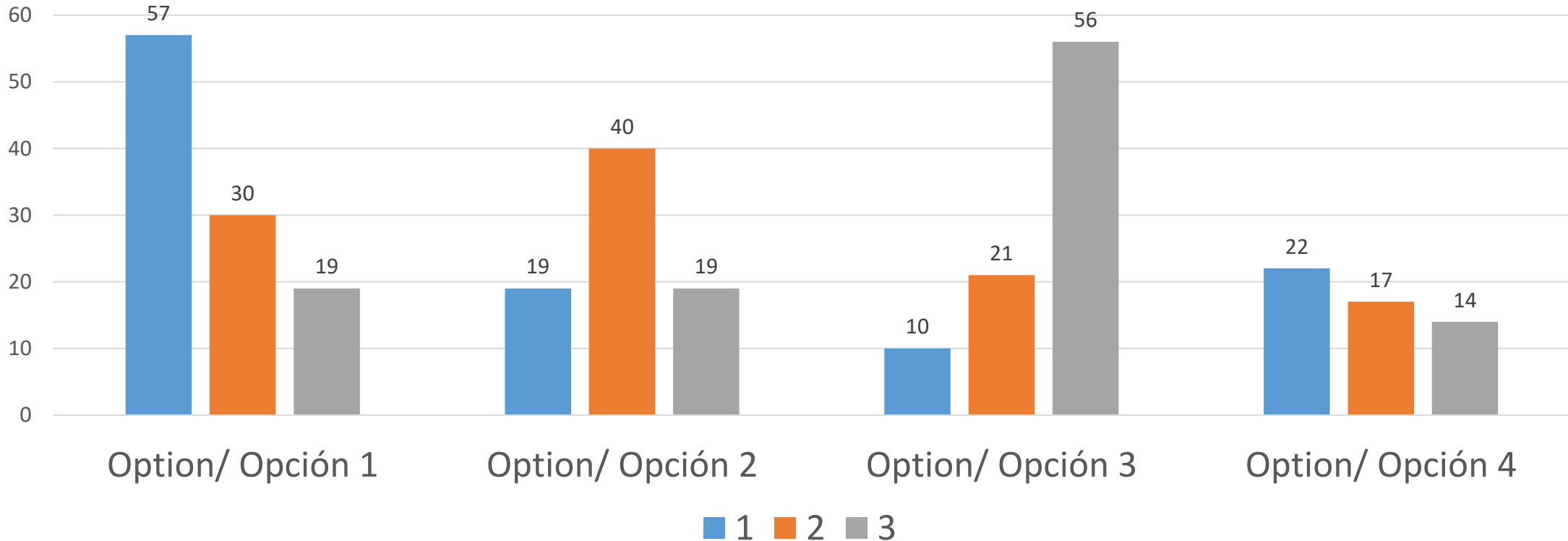
Round 1 Survey Results / Resultados de Encuesta

Advances the Stability Factor / Avanza el Factor de Estabilidad

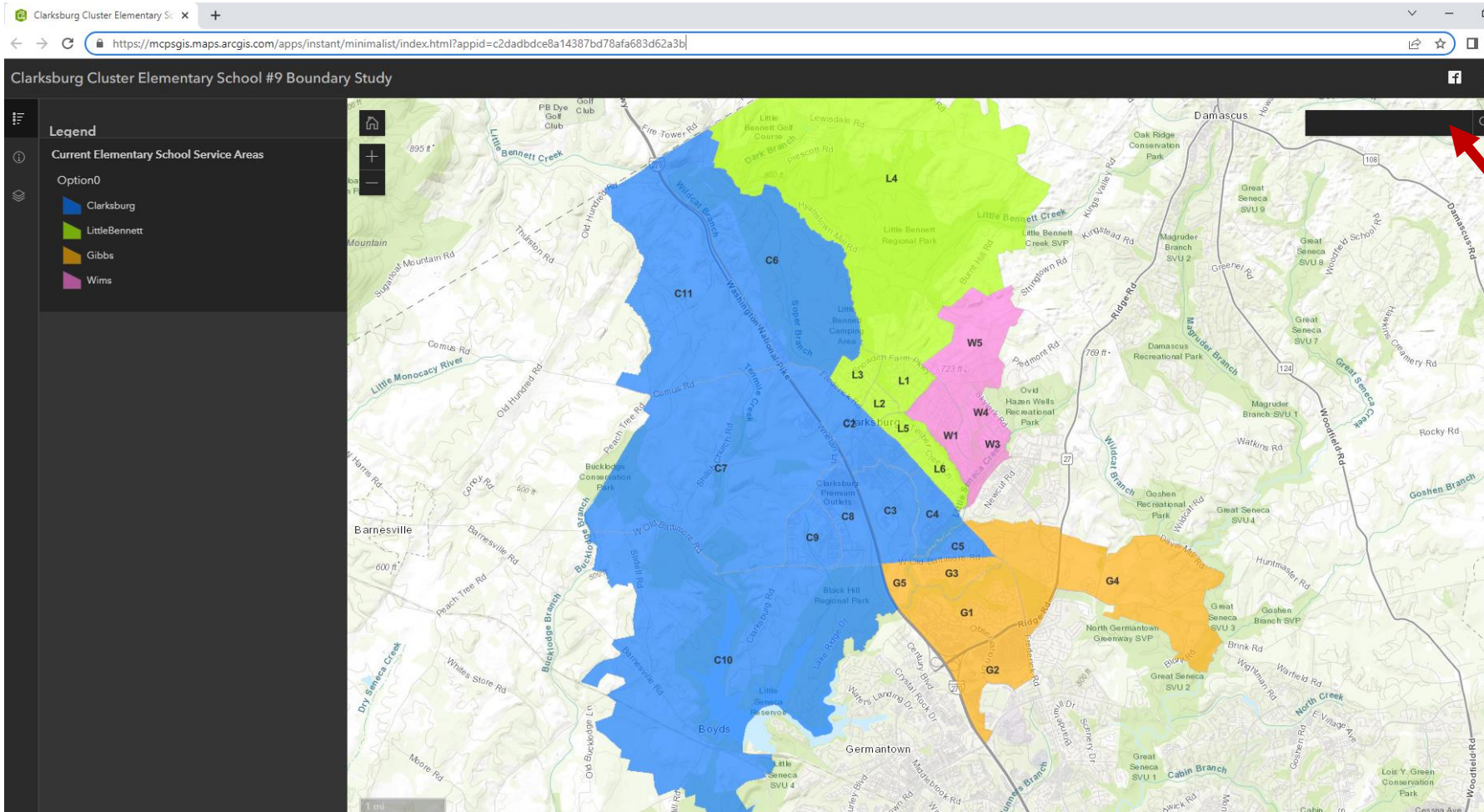


Round 1 Survey Results / Resultados de Encuesta

Top 3 Preferred Options / 3 Primeras Opciones Preferidas



Interactive Map/Mapa Interactivo



Type your address here/escrība su direcci3n aquđ

Meeting Schedule

All meetings to be held from 7:00-8:30pm

Date	Action	Location
March 9 ✓	Public Information Meeting #1	Virtual Meeting
March 10 ✓	Public Information Meeting #1	Virtual Meeting
March 11 ✓	Release of Survey #1 https://www.montgomeryschoolsmd.org/departments/planning/ClarksburgES9BoundaryStudy.aspx	Online
March 30 ✓	Presentation of 1 st Round of Options/Question and Answers	Virtual Meeting
March 31 ✓	Presentation of 1 st Round of Options/Question and Answers	Virtual Meeting
April 1 ✓	Release of Survey #2 (Survey closes April 15 at 11:59 PM) https://www.montgomeryschoolsmd.org/departments/planning/ClarksburgES9BoundaryStudy.aspx	Online
April 27	Presentation of 2 nd Round of Options/Questions and Answers (if needed)	Virtual Meeting
April 28	Presentation of 2 nd Round of Options/Questions and Answers (if needed)	Virtual Meeting
April 29	Release of Survey #3 (if needed) https://www.montgomeryschoolsmd.org/departments/planning/ClarksburgES9BoundaryStudy.aspx	Online
May 4	Public Information Meeting #2	Virtual Meeting
May 5	Public Information Meeting #2	Virtual Meeting

Websites / Sitios Web

<https://www.montgomeryschoolsmd.org/departments/planning/>

<https://www.montgomeryschoolsmd.org/departments/planning/ClarksburgES9BoundaryStudy.aspx>

boe@mcpsmd.org

Questions/ Preguntas

