

Clarksburg # 9 Boundary Study

Estudio Límites Geográficos

Round One Options Meeting

Reunión de la primera ronda de opciones

March 30 and 31, 2022

<https://www.montgomeryschoolsmd.org/departments/planning/ClarksburgES9BoundaryStudy.aspx>

Welcome / Bienvenidos

- This meeting is a Zoom Webinar
- Camera and microphone will be available for panelists only
- Please use the Q&A function to ask questions anytime during the meeting
- Questions will be answered at the end of the presentation

- Esta reunión es un seminario web de Zoom
- La cámara y el micrófono estarán disponibles solo para los panelistas
- Utilice la función de preguntas y respuestas para agregar sus preguntas en cualquier momento durante la presentación
- Las preguntas serán respondidas al final de la presentación

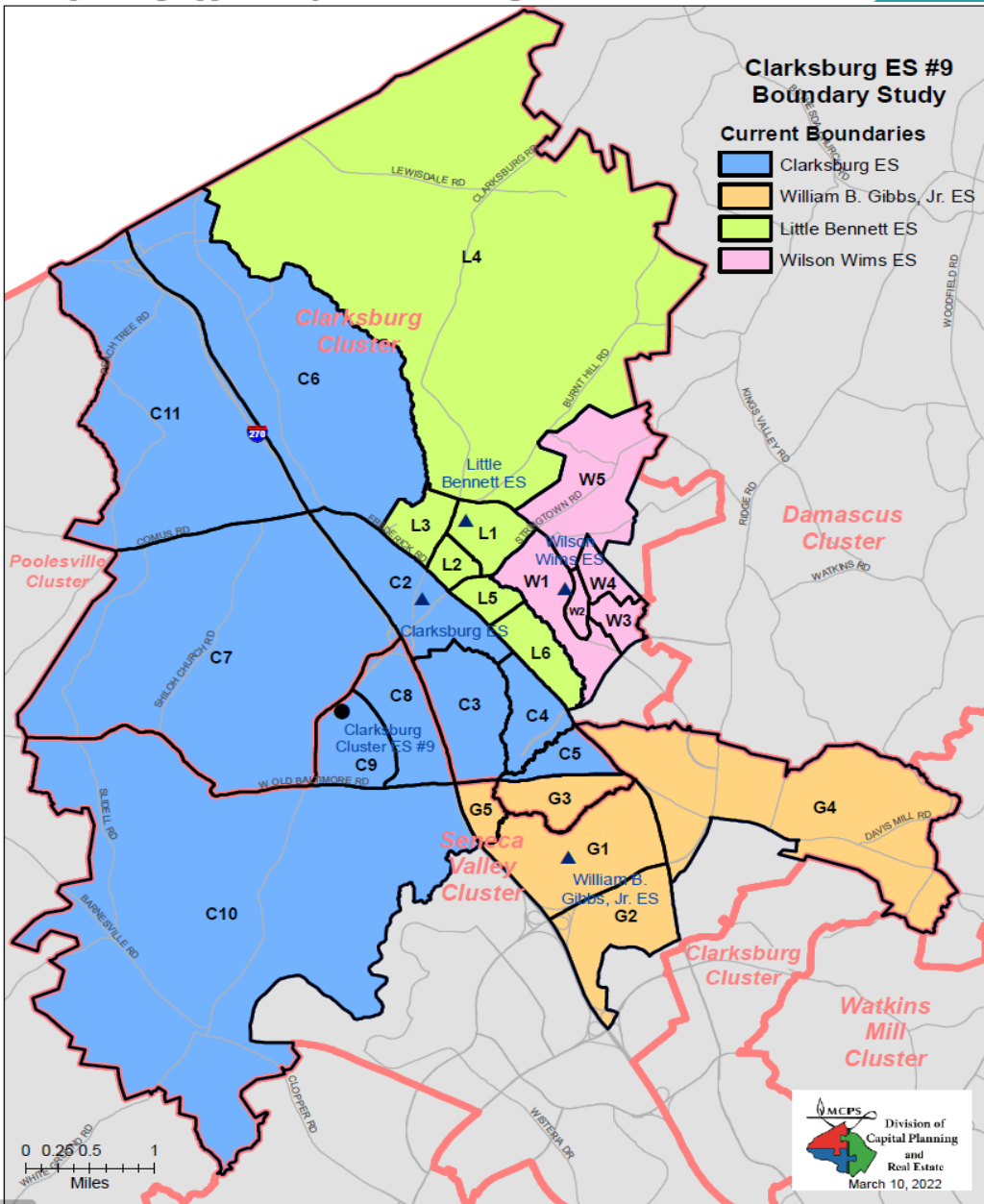
Agenda / Agenda

- Current Projections and Available Seats
- Round 1 Options
- Survey 1 Results
- Interactive Map
- Questions and Answers

- Proyecciones actuales y asientos disponibles
- Opciones de la primera ronda
- Resultados de la primera encuesta
- Mapa interactivo
- Preguntas y respuestas



Current Boundaries



Map of Boundary Study Area /
Mapa del área de estudio de límites

Current Projections and Available Seats/ Proyecciones actuales y asientos disponibles

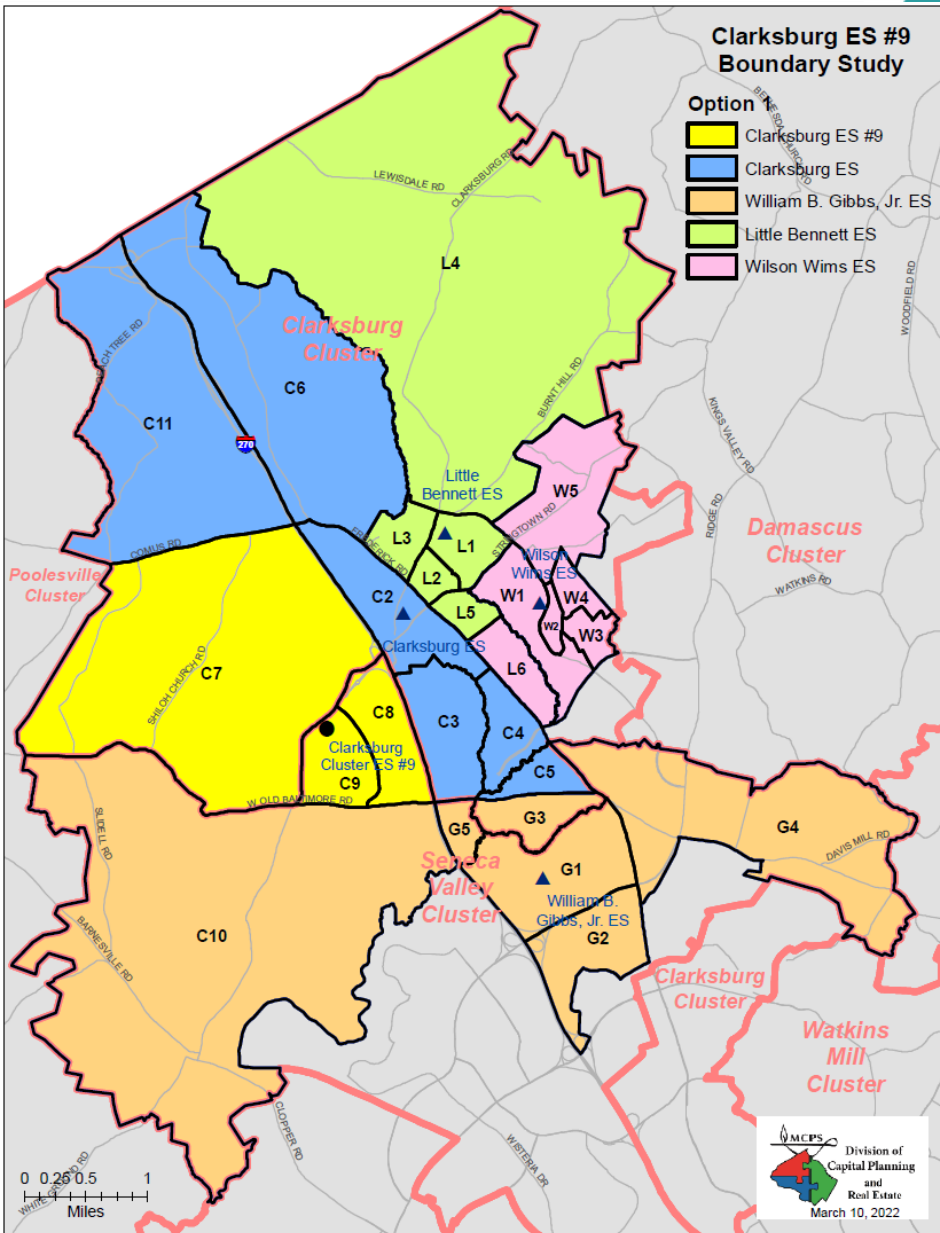
Schools		Official* 2021-2022	Projections					
			2022-2023	2023-2024	2024-2025	2025-2026	2026-2027	2027-2028
Clarksburg ES	Program Capacity	342	342	342	342	342	342	342
	Enrollment	771	875	965	962	977	992	983
	Available Space	-429	-533	-623	-620	-635	-650	-641
Clarksburg #9 ES	Program Capacity	0	0	721	721	721	721	721
	Enrollment	0	0	0	0	0	0	0
	Available Space	0	0	721	721	721	721	721
William B. Gibbs, Jr. ES	Program Capacity	726	726	726	726	726	726	726
	Enrollment	516	552	550	574	579	592	592
	Available Space	210	174	176	152	147	134	134
Little Bennett ES	Program Capacity	621	621	621	621	621	621	621
	Enrollment	642	627	613	595	577	561	570
	Available Space	-21	-6	8	26	44	60	51
Wilson Wims ES	Program Capacity	739	739	739	739	739	739	739
	Enrollment	598	597	595	582	607	624	618
	Available Space	141	142	144	157	132	115	121

* Source: Office of Shared Accountability, as of September 30th, 2021

Guiding Parameters for Option Development/ Parámetros guía para el desarrollo de opciones

- Four policy factors
 - *Demographic Characteristics of Student Population*
 - *Geography*
 - *Facility Utilization*
 - *Stability of School*
 - Maintain walkers
 - Avoid triple split-articulations
 - Grandfather Grade 5 students
- Cuatro factores de la política
 - *Características demográficas de la población estudiantil*
 - *Geografía*
 - *Utilización de instalaciones*
 - *Estabilidad de la escuela*
 - Mantener caminantes
 - Evitar las articulaciones triple divididas
 - Mantener a los estudiantes de quinto grado en sus escuelas actuales

Option 1 / Opción 1



Reassign/Reasignar

Zones C7, C8, and/y C9
from/de Clarksburg ES to/a Clarksburg #9 ES

Zone C10
from/de Clarksburg ES to/a William B. Gibbs, Jr. ES

Zone L6
from/de Little Bennett ES to/a Wilson Wims ES

Proposed Elementary School Boundary Reassignments

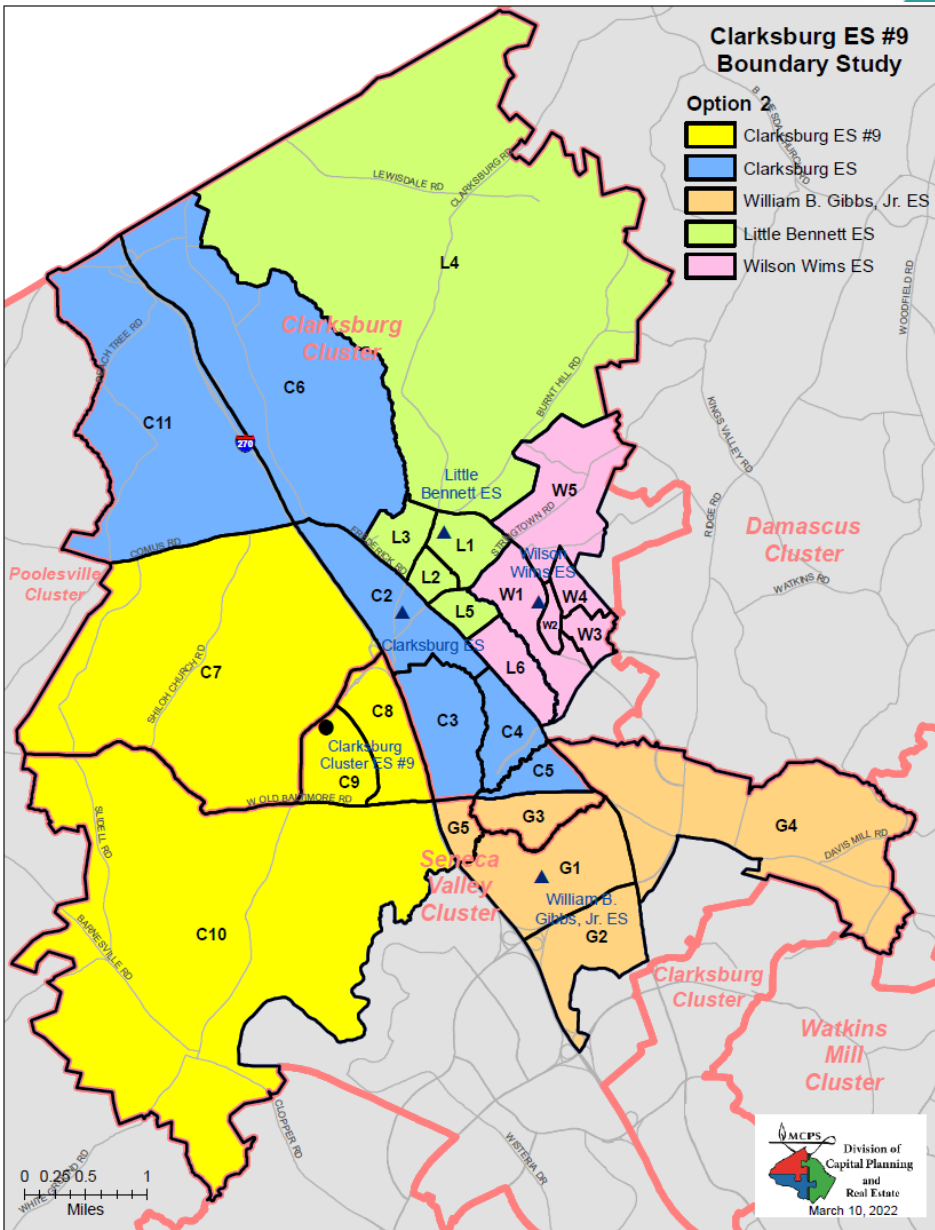
School	2021-2022					Race/Ethnic Composition						
	2023-24	2024-25	2025-26	2026-27	2027-28	% Afr.	% Asian	% Hispanic	% White	% 2 or More	% FARMS	% ESOL
	Clarksburg ES											
Maximum Number of Seats=	342											
No Change:												
Number of Students	965	962	977	992	983	30.0%	37.0%	14.9%	11.2%	6.5%	21.0%	19.5%
Percent of Building Occupied	282%	281%	286%	290%	287%							
Available Seats	-823	-820	-835	-850	-841							
With Change:												
Number of Students	507	392	355	324	283	26.4%	38.3%	16.5%	11.6%	6.3%	22.1%	18.8%
Percent of Building Occupied	148%	115%	104%	95%	83%							
Available Seats	-185	-50	-13	18	59							
Clarksburg ES #9												
Maximum Number of Seats=	721											
No Change:						NA	NA	NA	NA	NA	NA	NA
Number of Students	0	0	0	0	0							
Percent of Building Occupied	0%	0%	0%	0%	0%							
Available Seats	721	721	721	721	721							
With Change:												
Number of Students	421	521	564	602	629	33.9%	38.2%	12.6%	9.8%	5.3%	19.2%	19.7%
Percent of Building Occupied	58%	72%	78%	83%	87%							
Available Seats	300	200	157	119	92							
William B. Gibbs, Jr. ES												
Maximum Number of Seats=	726											
No Change:												
Number of Students	550	574	579	592	592	32.6%	27.1%	19.6%	15.9%	4.7%	31.6%	18.0%
Percent of Building Occupied	76%	79%	80%	82%	82%							
Available Seats	176	152	147	134	134							
With Change:												
Number of Students	587	623	637	658	663	31.3%	26.0%	20.3%	16.5%	5.9%	31.8%	18.3%
Percent of Building Occupied	81%	86%	88%	91%	91%							
Available Seats	139	103	89	68	63							
Little Bennett ES												
Maximum Number of Seats=	621											
No Change:												
Number of Students	613	595	577	561	570	26.8%	27.7%	18.4%	20.4%	5.9%	23.1%	15.6%
Percent of Building Occupied	99%	96%	93%	90%	92%							
Available Seats	8	26	44	60	51							
With Change:												
Number of Students	592	569	550	533	540	27.1%	27.8%	17.9%	20.2%	6.1%	22.5%	15.5%
Percent of Building Occupied	95%	92%	89%	86%	87%							
Available Seats	29	52	71	88	81							
Wilson Wims ES												
Maximum Number of Seats=	739											
No Change:												
Number of Students	595	582	607	624	618	21.9%	41.1%	13.0%	18.9%	4.3%	12.9%	7.5%
Percent of Building Occupied	81%	79%	82%	84%	84%							
Available Seats	144	157	132	115	121							
With Change:												
Number of Students	616	608	634	652	648	21.7%	40.6%	13.7%	19.2%	4.2%	13.8%	7.9%
Percent of Building Occupied	83%	82%	86%	88%	88%							
Available Seats	123	131	105	87	91							

Option 1 / Opción 1

Student Reassignments

From	To
Clarksburg ES	Clarksburg ES #9
Clarksburg ES	William B. Gibbs, Jr. ES
Little Bennett ES	Wilson Wims ES

School	Demographic Changes				Utilization Range 2023-2027	Geography
	FARMS %		ESOL %			
	Current	Proposed Change	Current	Proposed Change		
Clarksburg ES	21.0	22.1	19.5	18.8	148%-83%	Contiguous
Clarksburg ES #9	0	19.2	0	19.7	58%-87%	Contiguous
William B. Gibbs ES	31.6	31.8	18.0	18.3	81%-91%	Contiguous
Little Bennett ES	23.1	22.5	15.6	15.5	95%-87%	Contiguous
Wilson Wims ES	12.9	13.8	7.5	7.9	83%-88%	Contiguous



Option 2/Opción 2

Reassign/Reasignar

Zones/Zonas C7, C8, C9, and/y C10
from/de Clarksburg ES to/a Clarksburg #9 ES

Zone/Zona L6
from/de Little Bennett ES to/a Wilson Wims ES

Option 2 / Opción 2

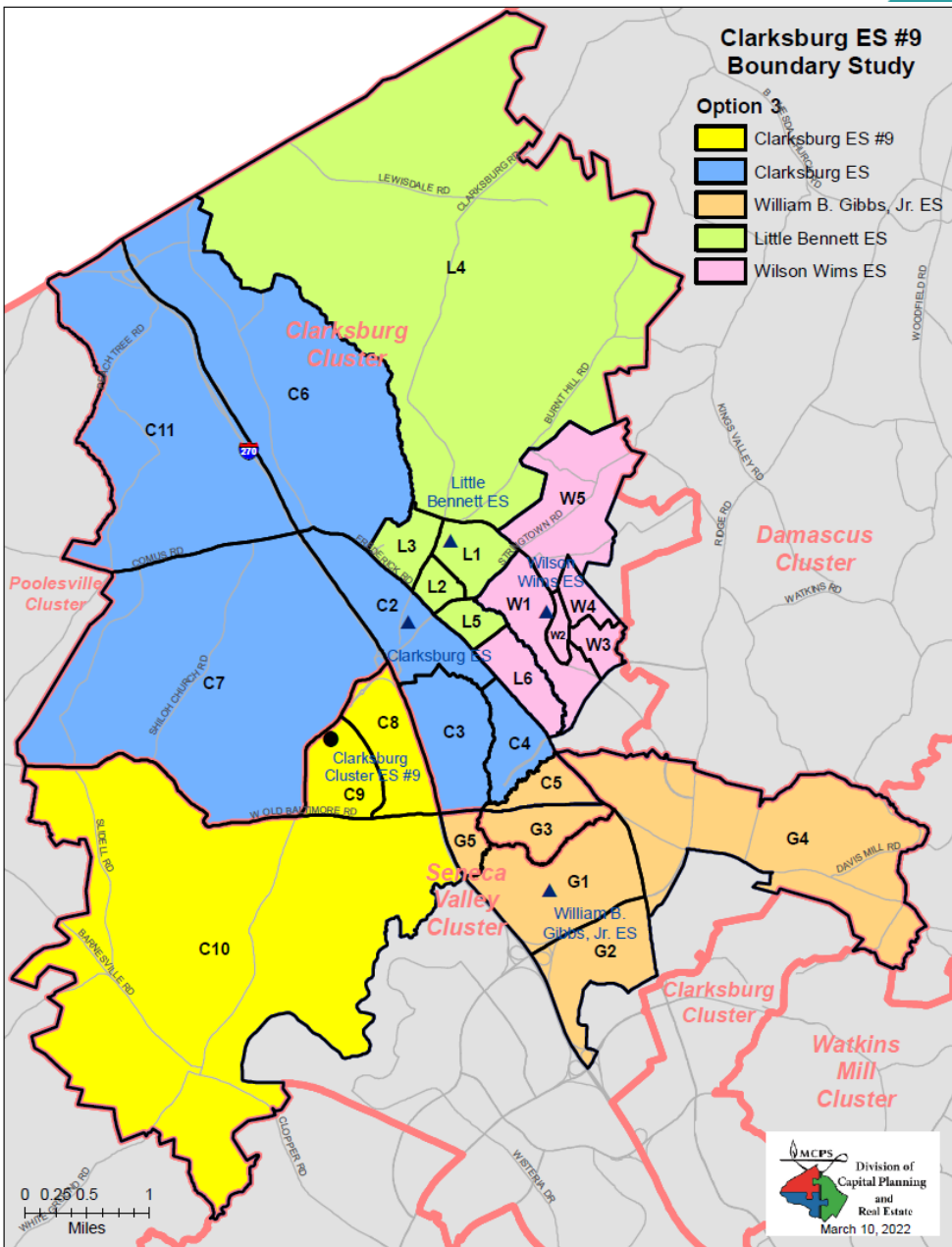
Proposed Elementary School Boundary Reassignments

School	2021-2022					Race/Ethnic Composition						
	2023-24	2024-26	2025-28	2026-27	2027-28	% Afr. Amer.	% Asian	% Hispanic	% White	% 2 or More	% FARMs	% ESOL
Clarksburg ES												
Maximum Number of Seats=	342											
<i>No Change:</i>												
Number of Students	965	962	977	992	983	30.0%	37.0%	14.9%	11.2%	6.5%	21.0%	19.5%
Percent of Building Occupied	282%	281%	286%	290%	287%							
Available Seats	-623	-620	-635	-650	-641							
<i>With Change:</i>												
Number of Students	507	392	355	324	283	26.4%	38.3%	16.5%	11.6%	6.3%	22.1%	18.8%
Percent of Building Occupied	148%	115%	104%	95%	83%							
Available Seats	-185	-50	-13	18	59							
Clarksburg ES #9												
Maximum Number of Seats=	721											
<i>No Change:</i>												
Number of Students	0	0	0	0	0	NA	NA	NA	NA	NA	NA	NA
Percent of Building Occupied	0%	0%	0%	0%	0%							
Available Seats	721	721	721	721	721							
<i>With Change:</i>												
Number of Students	458	570	622	668	700	32.3%	36.1%	13.9%	10.9%	6.6%	20.3%	19.9%
Percent of Building Occupied	64%	79%	86%	93%	97%							
Available Seats	263	151	99	53	21							
William B. Gibbs, Jr. ES												
Maximum Number of Seats=	726											
<i>No Change:</i>												
Number of Students	550	574	579	592	592	32.6%	27.1%	19.6%	15.9%	4.7%	31.6%	18.0%
Percent of Building Occupied	76%	79%	80%	82%	82%							
Available Seats	176	152	147	134	134							
Little Bennett ES												
Maximum Number of Seats=	621											
<i>No Change:</i>												
Number of Students	613	595	577	561	570	26.8%	27.7%	18.4%	20.4%	5.9%	23.1%	15.6%
Percent of Building Occupied	99%	96%	93%	90%	92%							
Available Seats	8	26	44	60	51							
<i>With Change:</i>												
Number of Students	592	569	550	533	540	27.1%	27.8%	17.9%	20.2%	6.1%	21.7%	15.0%
Percent of Building Occupied	95%	92%	89%	86%	87%							
Available Seats	29	52	71	88	81							
Wilson Wims ES												
Maximum Number of Seats=	739											
<i>No Change:</i>												
Number of Students	595	582	607	624	618	21.9%	41.1%	13.0%	18.9%	4.3%	12.9%	7.5%
Percent of Building Occupied	81%	79%	82%	84%	84%							
Available Seats	144	157	132	115	121							
<i>With Change:</i>												
Number of Students	616	608	634	652	648	21.7%	40.6%	13.7%	19.2%	4.2%	13.8%	7.9%
Percent of Building Occupied	83%	82%	86%	88%	88%							
Available Seats	123	131	105	87	91							

Student Reassignments	
From	To
Clarksburg ES	Clarksburg ES #9
Little Bennett ES	Wilson Wims ES

School	Demographic Changes				Utilization Range 2023-2027	Geography
	FARMs %		ESOL %			
	Current	Proposed Change	Current	Proposed Change		
Clarksburg ES	21.0	22.1	19.5	18.8	148%-83%	Contiguous
Clarksburg ES #9	0	20.3	0	19.9	64%-97%	Contiguous
William B. Gibbs ES	31.6	31.6	18.0	18.0	76%-82%	Contiguous
Little Bennett ES	23.1	21.7	15.6	15.0	95%-87%	Contiguous
Wilson Wims ES	12.9	13.8	7.5	7.9	83%-88%	Contiguous

Option 3 / Opción 3



Reassign/Reasignar

Zones/Zonas C8, C9, and/y C10 from/de Clarksburg ES to/a Clarksburg #9 ES

Zone/Zona C5 from/de Clarksburg ES to/a William B. Gibbs, Jr. ES

Zone/Zona L6 from/de Little Bennett ES to/a Wilson Wims ES

MONTGOMERY COUNTY PUBLIC SCHOOLS

Expanding Opportunity and Unleashing Potential

Option 3 / Opción 3

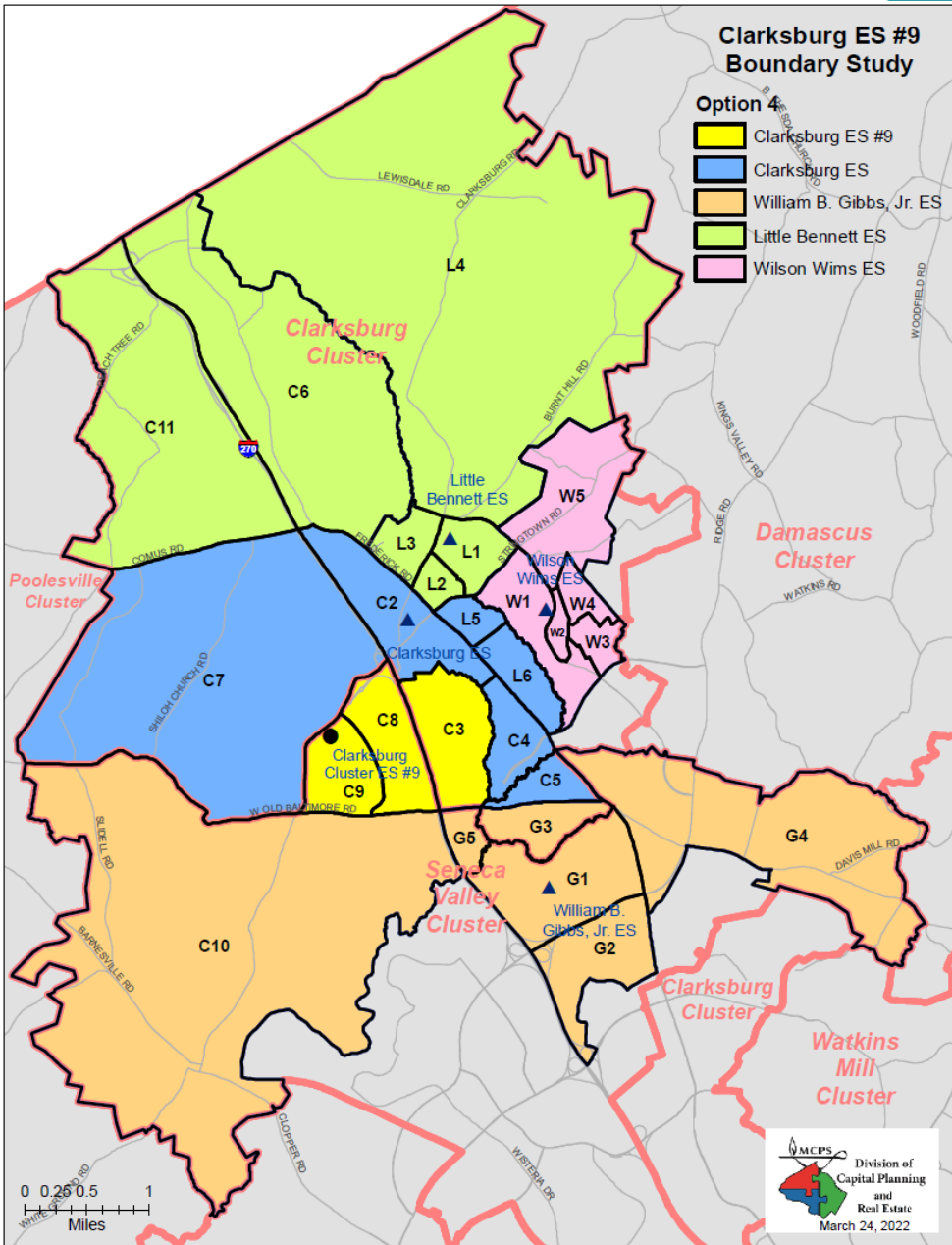
Proposed Elementary School Boundary Reassignments

School	2021-2022					Race/Ethnic Composition						
	2023-24	2024-25	2025-26	2026-27	2027-28	% Afr. Amer.	% Asian	% Hispanic	% White	% 2 or More	% FARMS	% ESOL
Clarksburg ES												
Maximum Number of Seats=	342											
<i>No Change:</i>												
Number of Students	965	962	977	992	983	30.0%	37.0%	14.9%	11.2%	6.5%	21.0%	19.5%
Percent of Building Occupied	282%	281%	286%	290%	287%							
Available Seats	-623	-620	-635	-650	-641							
<i>With Change:</i>												
Number of Students	487	377	371	361	344	26.7%	35.7%	18.1%	12.6%	6.1%	23.1%	17.7%
Percent of Building Occupied	142%	110%	108%	106%	101%							
Available Seats	-145	-35	-29	-19	-2							
Clarksburg ES #9												
Maximum Number of Seats=	721											
<i>No Change:</i>						NA	NA	NA	NA	NA	NA	NA
Number of Students	0	0	0	0	0							
Percent of Building Occupied	0%	0%	0%	0%	0%							
Available Seats	721	721	721	721	721							
<i>With Change:</i>												
Number of Students	442	542	568	591	598	33.1%	37.1%	12.7%	10.1%	6.8%	20.0%	20.0%
Percent of Building Occupied	61%	75%	79%	82%	83%							
Available Seats	279	179	153	130	123							
William B. Gibbs, Jr. ES												
Maximum Number of Seats=	726											
<i>No Change:</i>												
Number of Students	550	574	579	592	592	32.6%	27.1%	19.6%	15.9%	4.7%	31.6%	18.0%
Percent of Building Occupied	76%	79%	80%	82%	82%							
Available Seats	178	152	147	134	134							
<i>With Change:</i>												
Number of Students	586	617	617	632	633	31.4%	28.3%	19.5%	15.7%	4.7%	30.7%	18.6%
Percent of Building Occupied	81%	85%	85%	87%	87%							
Available Seats	140	109	109	94	93							
Little Bennett ES												
Maximum Number of Seats=	621											
<i>No Change:</i>												
Number of Students	613	595	577	561	570	26.8%	27.7%	18.4%	20.4%	5.9%	23.1%	15.6%
Percent of Building Occupied	99%	96%	93%	90%	92%							
Available Seats	8	26	44	60	51							
<i>With Change:</i>												
Number of Students	592	569	550	533	540	27.1%	27.8%	17.9%	20.2%	6.1%	22.5%	15.5%
Percent of Building Occupied	95%	92%	89%	86%	87%							
Available Seats	29	52	71	88	81							
Wilson Wims ES												
Maximum Number of Seats=	739											
<i>No Change:</i>												
Number of Students	595	582	607	624	618	21.9%	41.1%	13.0%	18.9%	4.3%	12.9%	7.5%
Percent of Building Occupied	81%	79%	82%	84%	84%							
Available Seats	144	157	132	115	121							
<i>With Change:</i>												
Number of Students	616	608	634	652	648	21.7%	40.6%	13.7%	19.2%	4.2%	13.8%	7.9%
Percent of Building Occupied	83%	82%	86%	88%	88%							
Available Seats	123	131	105	87	91							

Student Reassignments	
From	To
Clarksburg ES	Clarksburg ES #9
Clarksburg ES	William B. Gibbs, Jr. ES
Little Bennett ES	Wilson Wims ES

School	Demographic Changes				Utilization Range 2023-2027	Geography
	FARMS %		ESOL %			
	Current	Proposed Change	Current	Proposed Change		
Clarksburg ES	21.0	23.1	19.5	17.7	142%-101%	Contiguous
Clarksburg ES #9	0	20.0	0	20.0	61%-83%	Contiguous
William B. Gibbs ES	31.6	30.7	18.0	18.6	81%-87%	Contiguous
Little Bennett ES	23.1	22.5	15.6	15.5	95%-87%	Contiguous
Wilson Wims ES	12.9	13.8	7.5	7.9	83%-88%	Contiguous

Option 4 / Opción 4



Reassign/Reasignar

Zones/Zonas C3, C8, and/y C9
from/de Clarksburg ES to/a Clarksburg #9 ES

Zones/Zonas L5 and/y L6
from/de Little Bennett ES to/a Clarksburg ES

Zones/Zonas C6 and/y C11
from/de Clarksburg ES to/a Little Bennett ES

Zone/Zona C10
from/de Clarksburg ES to/a William B. Gibbs, Jr. ES

MONTGOMERY COUNTY PUBLIC SCHOOLS

Expanding Opportunity and Unleashing Potential

Option 4 / Opción 4

Proposed Elementary School Boundary Reassignments

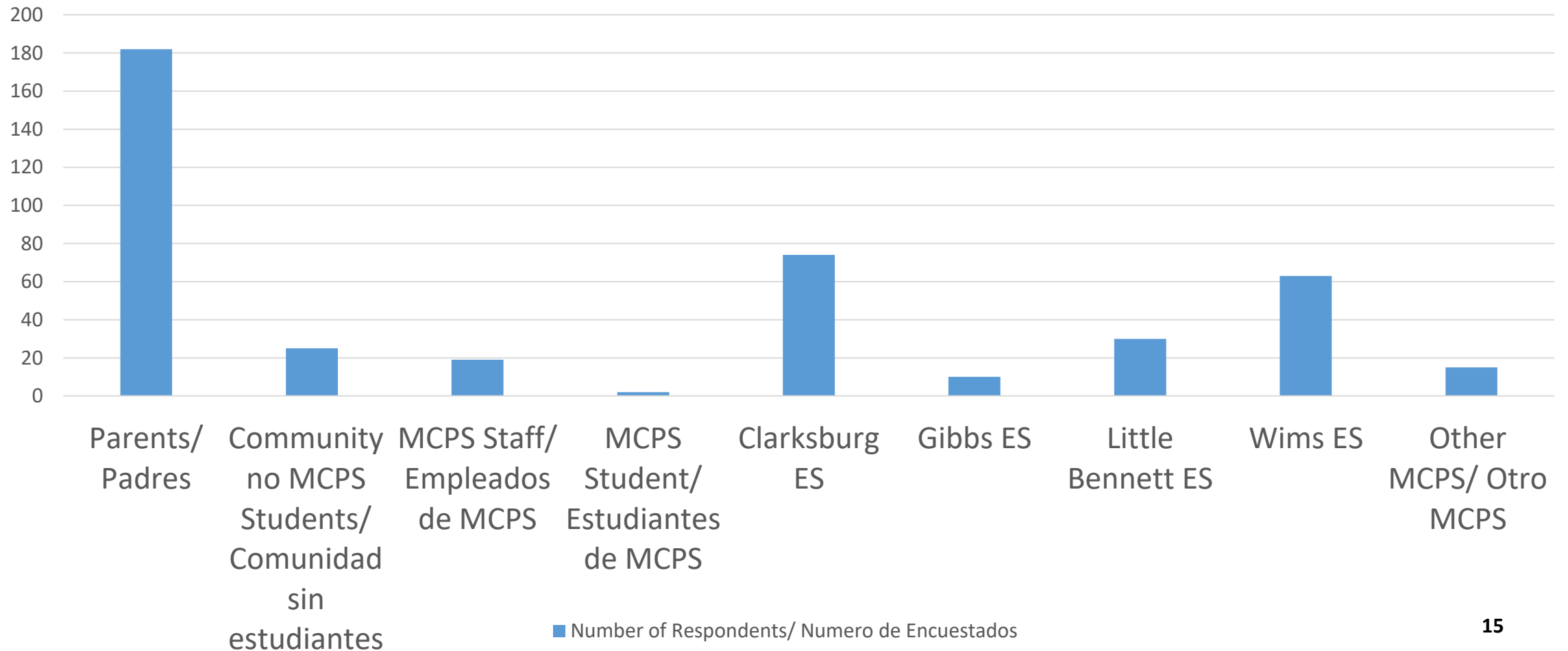
School	2021-2022					Race/Ethnic Composition						
	2023-24	2024-25	2025-26	2026-27	2027-28	% Afr. Amer.	% Asian	% Hispanic	% White	% 2 or More	% FARMS	% ESOL
Clarksburg ES												
Maximum Number of Seats=	342											
<i>No Change:</i>												
Number of Students	965	962	977	992	983	30.0%	37.0%	14.9%	11.2%	6.5%	21.0%	19.5%
Percent of Building Occupied	282%	281%	286%	290%	287%							
Available Seats	-623	-620	-635	-650	-641							
<i>With Change:</i>												
Number of Students	479	369	357	355	342	15.9%	45.1%	19.0%	17.9%	1.0%	15.4%	9.7%
Percent of Building Occupied	140%	108%	104%	104%	100%							
Available Seats	-137	-27	-15	-13	0							
Clarksburg ES #9												
Maximum Number of Seats=	721											
<i>No Change:</i>												
Number of Students	0	0	0	0	0	NA	NA	NA	NA	NA	NA	NA
Percent of Building Occupied	0%	0%	0%	0%	0%							
Available Seats	721	721	721	721	721							
<i>With Change:</i>												
Number of Students	496	602	619	633	635	34.8%	37.9%	12.2%	8.7%	6.2%	21.9%	21.1%
Percent of Building Occupied	69%	83%	86%	88%	88%							
Available Seats	225	119	102	88	86							
William B. Gibbs, Jr. ES												
Maximum Number of Seats=	726											
<i>No Change:</i>												
Number of Students	550	574	579	592	592	32.6%	27.1%	19.6%	15.9%	4.7%	31.6%	18.0%
Percent of Building Occupied	76%	79%	80%	82%	82%							
Available Seats	176	152	147	134	134							
<i>With Change:</i>												
Number of Students	587	623	637	658	663	31.2%	25.9%	20.3%	16.4%	5.8%	31.8%	18.2%
Percent of Building Occupied	81%	86%	88%	91%	91%							
Available Seats	139	103	89	68	63							
Little Bennett ES												
Maximum Number of Seats=	621											
<i>No Change:</i>												
Number of Students	627	613	595	577	561	26.8%	27.7%	18.4%	20.4%	5.9%	23.1%	15.6%
Percent of Building Occupied	101%	99%	96%	93%	90%							
Available Seats	-6	8	26	44	60							
<i>With Change:</i>												
Number of Students	566	537	520	499	505	28.3%	26.5%	18.4%	19.3%	6.9%	23.3%	17.2%
Percent of Building Occupied	91%	86%	84%	80%	81%							
Available Seats	55	84	101	122	116							
Wilson Wims ES												
Maximum Number of Seats=	739											
<i>No Change:</i>												
Number of Students	595	582	607	624	618	21.9%	41.1%	13.0%	18.9%	4.3%	12.9%	7.5%
Percent of Building Occupied	81%	79%	82%	84%	84%							
Available Seats	144	157	132	115	121							

Student Reassignments	
From	To
Clarksburg ES	Clarksburg ES #9
Clarksburg ES	Little Bennett ES
Clarksburg ES	William B. Gibbs, Jr. ES
Little Bennett ES	Clarksburg ES

School	Demographic Changes				Utilization Range 2023-2027	Geography
	FARMS %		ESOL %			
	Current	Proposed Change	Current	Proposed Change		
Clarksburg ES	21.0	15.4	19.5	9.7	140%-100%	Contiguous
Clarksburg ES #9	0	21.9	0	21.1	69%-88%	Contiguous
William B. Gibbs ES	31.6	31.8	18.0	18.2	81%-91%	Contiguous
Little Bennett ES	23.1	23.3	15.6	17.2	91%-81%	Contiguous
Wilson Wims ES	12.9	12.9	7.5	7.5	81%-84%	Contiguous

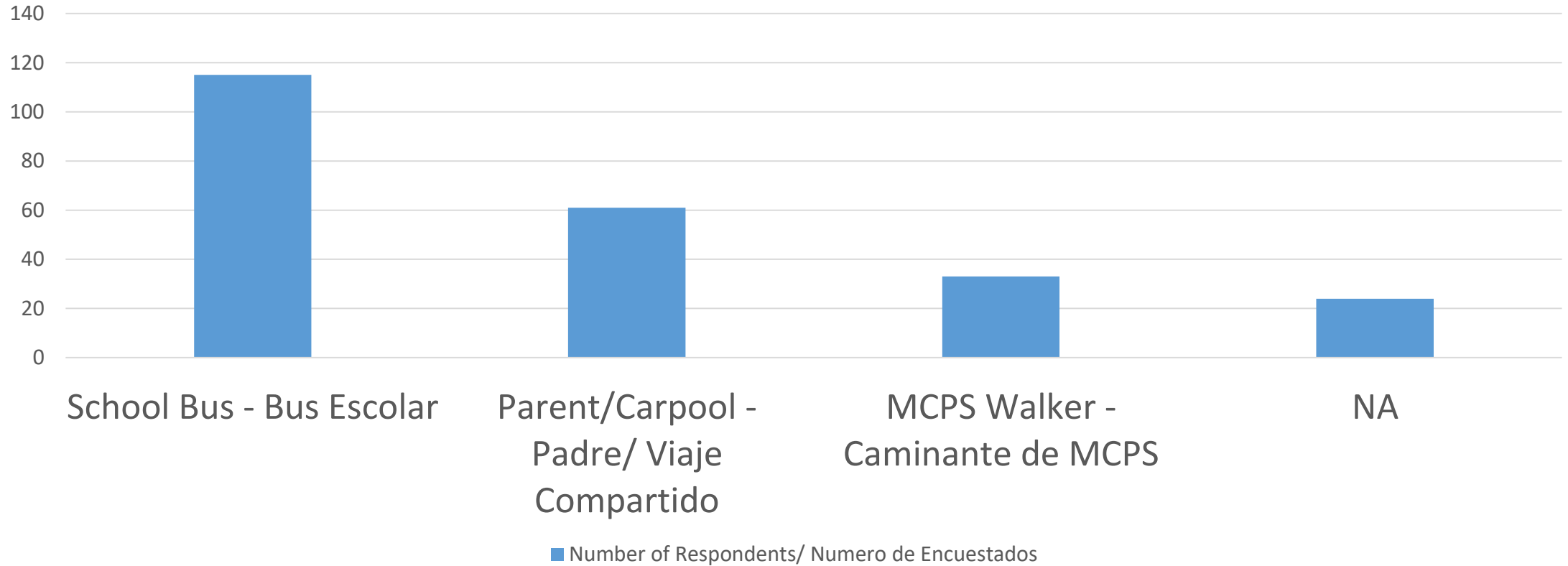
Survey Results / Resultados de Encuesta

Respondents/Encuestados

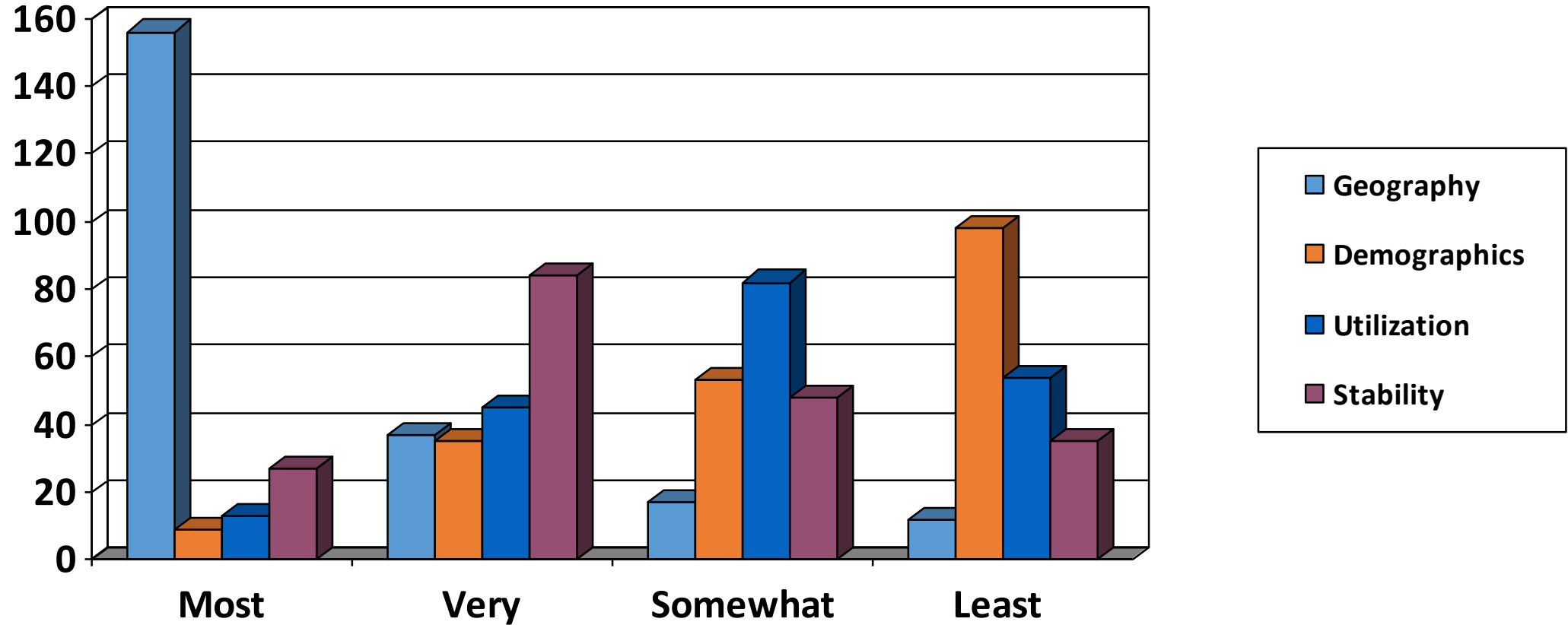


Survey Results / Resultados de Encuesta

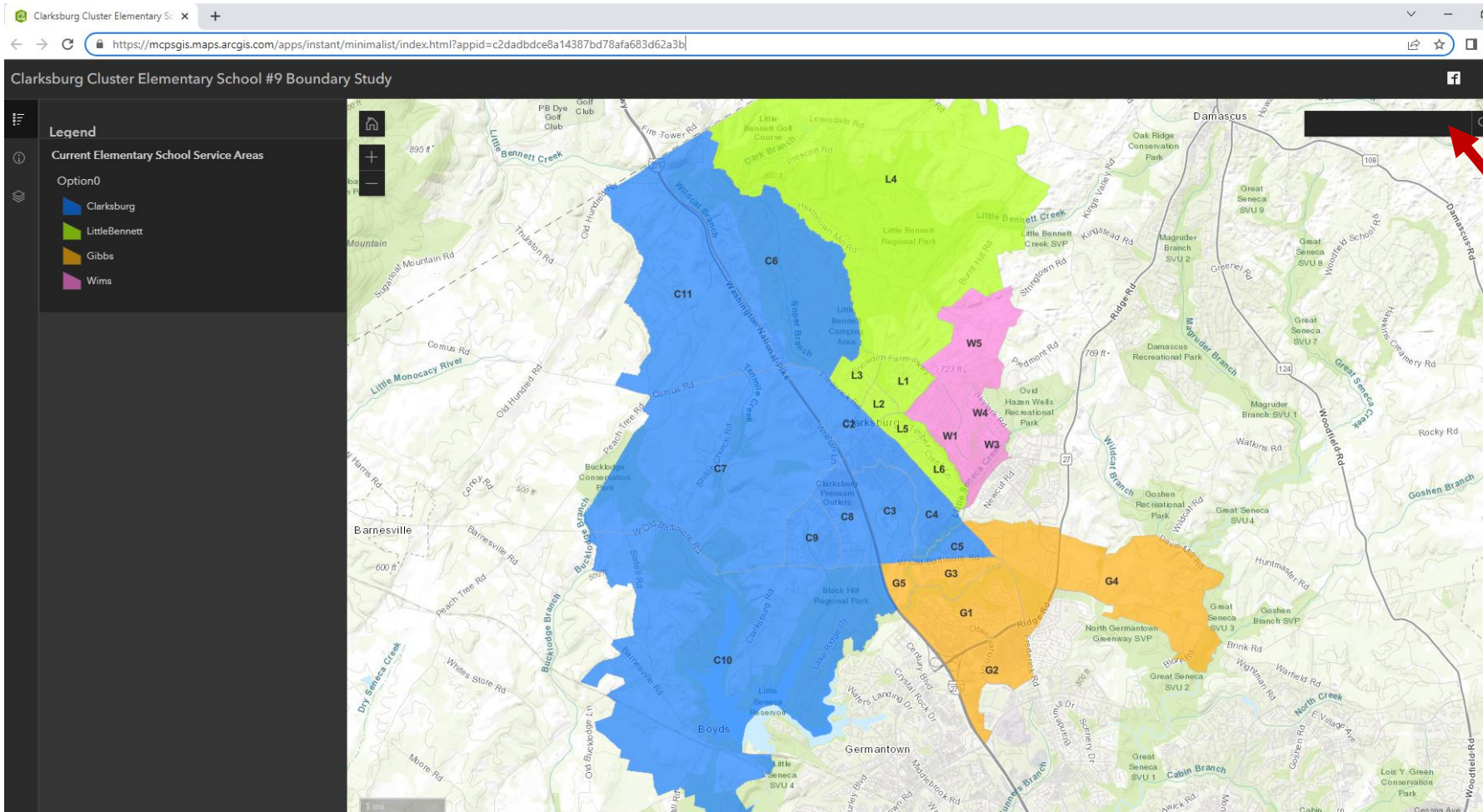
Transportation to School/ Transporte a la Escuela



Survey Results / Resultados de Encuesta



Interactive Map/Mapa Interactivo



Type your
address
here/escrība su
dirección aquí

Schedule

All meetings to be held from 7:00-8:30pm

Date	Action	Location
March 9 ✓	Public Information Meeting #1	Virtual Meeting
March 10 ✓	Public Information Meeting #1	Virtual Meeting
March 11 ✓	Release of Survey #1 https://www.montgomeryschoolsmd.org/departments/planning/ClarksburgES9BoundaryStudy.aspx	Online
March 30 ✓	Presentation of 1 st Round of Options/Question and Answers	Virtual Meeting
March 31	Presentation of 1 st Round of Options/Question and Answers	Virtual Meeting
April 1	Release of Survey #2 (Survey closes April 15 at 11:59 PM) https://www.montgomeryschoolsmd.org/departments/planning/ClarksburgES9BoundaryStudy.aspx	Online
April 27	Presentation of 2 nd Round of Options/Questions and Answers (if needed)	Virtual Meeting
April 28	Presentation of 2 nd Round of Options/Questions and Answers (if needed)	Virtual Meeting
April 29	Release of Survey #3 (if needed) https://www.montgomeryschoolsmd.org/departments/planning/ClarksburgES9BoundaryStudy.aspx	Online
May 4	Public Information Meeting #2	Virtual Meeting
May 5	Public Information Meeting #2	Virtual Meeting

Websites / Sitios Web

<https://www.montgomeryschoolsmd.org/departments/planning/>

<https://www.montgomeryschoolsmd.org/departments/planning/ClarksburgES9BoundaryStudy.aspx>

boe@mcpsmd.org

Questions/ Preguntas

