

Clarksburg # 9 Boundary Study Estudio Límites Geográficos

Public Information Meeting #1/ Reunión de Información Pública # 1

March 9 and 10, 2022

<https://www.montgomeryschoolsmd.org/departments/planning/ClarksburgES9BoundaryStudy.aspx>

Welcome / Bienvenidos

- This meeting is a Zoom Webinar
- Camera and microphone will be available for panelists only
- Please use the Q&A function to ask questions anytime during the meeting
- Questions will be answered at the end of the presentation

- Esta reunión es un seminario web de Zoom
- La cámara y el micrófono estarán disponibles solo para los panelistas
- Utilice la función de preguntas y respuestas para agregar sus preguntas en cualquier momento durante la presentación
- Las preguntas serán respondidas al final de la presentación

Agenda / Agenda

- Resolution
- Current Projections and Available Seats
- Policy FAA
- Boundary Process
- Questions and Answers

- Resolución
- Proyecciones actuales y asientos disponibles
- Política FAA
- Proceso de límites
- Preguntas y respuestas



BOE Adopted Resolution / Resolución adoptada por el Consejo

ADOPTED
6.3

Office of the Superintendent of Schools
MONTGOMERY COUNTY PUBLIC SCHOOLS
Rockville, Maryland

November 18, 2021

MEMORANDUM

To: Members of the Board of Education
From: Monifa B. McKnight, Interim Superintendent of Schools
Subject: Boundary Study to Determine the Service Area for Clarksburg Elementary School #9

The Clarksburg Master Plan allows for the development of up to 15,000 residential units. The plan includes five future elementary school sites and one future middle school site. Little Bennett Elementary School opened in August 2006, William B. Gibbs, Jr. Elementary School opened in August 2009, Wilson Wims Elementary School opened in August 2014, and Snowden Farm Elementary School opened in August 2019.

Enrollment projections at Clarksburg Elementary School are expected to exceed capacity by more than 600 students by the end of the six-year planning period. A boundary study previously was approved to begin in fall 2020, to explore the assignment of students for the opening of Clarksburg Elementary School #9, with Board of Education action scheduled for November 2021. However, the Montgomery County Council delayed the opening of the new school from August 2022, to August 2023; therefore, the boundary study was delayed.

WHEREAS, In the *Superintendent's Recommended FY 2023 Capital Budget and FY 2023–2028 Capital Improvements Program*, the interim superintendent of schools has recommended a boundary study to determine the service area for Clarksburg Elementary School #9; and

WHEREAS, On October 25, 26, 28, and November 9, 2021, the Board of Education conducted work sessions on all capital and non-capital items included in the *Superintendent's Recommended FY 2023 Capital Budget and the FY 2023–2028 Capital Improvements Program*; and

WHEREAS, On November 2, 4, and 8, 2021, the Board of Education conducted public hearings in accordance with Board of Education Policy FAA, *Educational Facilities Planning*, and Montgomery County Public Schools Regulation FAA-RA, *Educational Facilities Planning*, on the interim superintendent of schools' recommendation; now therefore be it

Members of the Board of Education 2 November 18, 2021

Resolved, That a boundary study be conducted to determine the service area for Clarksburg Elementary School #9 in accordance with Board of Education Policy FAA, *Educational Facilities Planning*, and Montgomery County Public Schools Regulation FAA-RA, *Educational Facilities Planning*; and be it further

Resolved, That Clarksburg, William B. Gibbs, Jr., Little Bennett, and Wilson Wims elementary schools be included in the boundary study, and be it further

Resolved, That no middle schools or high schools be included in the boundary study; and be it further

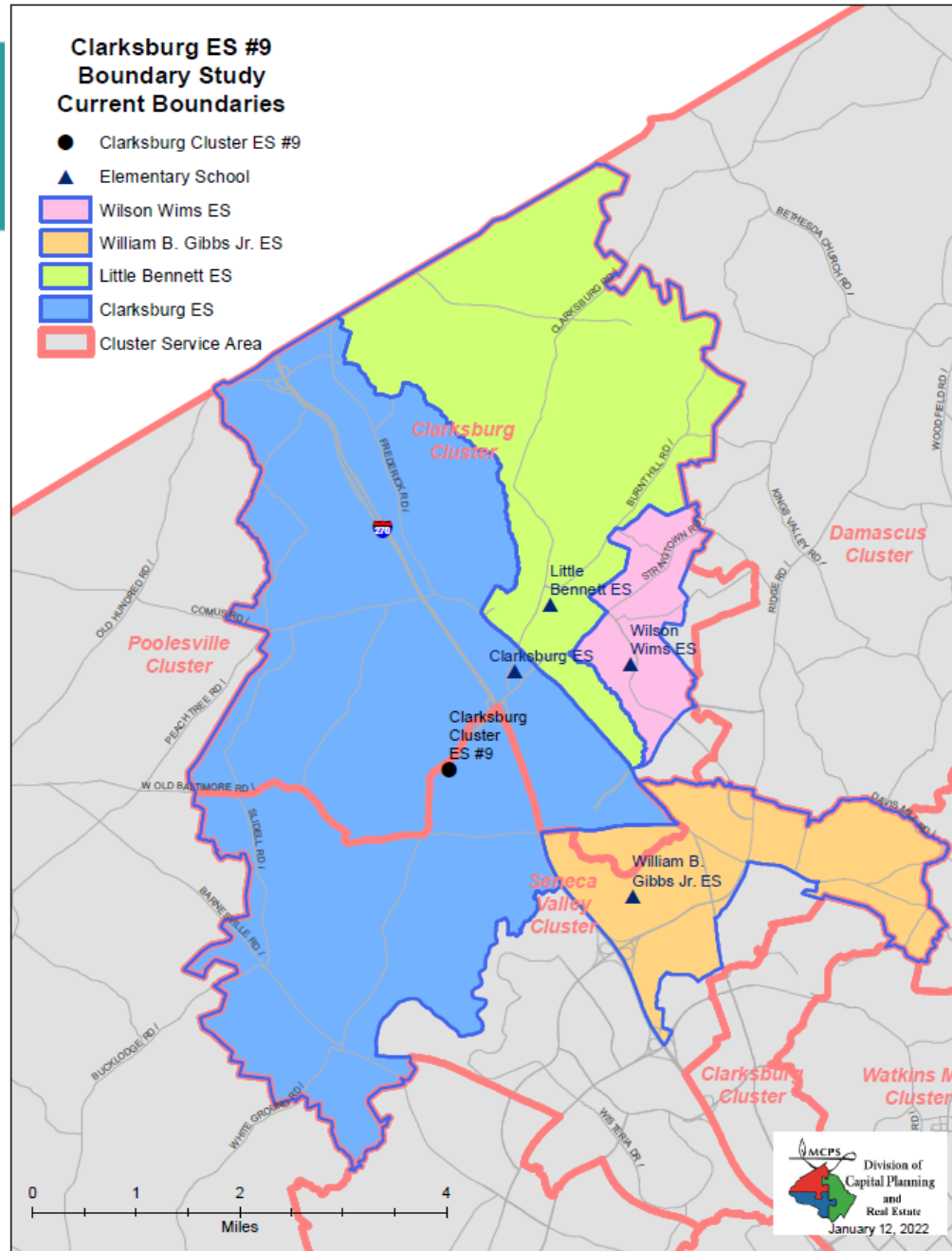
Resolved, That, on the recommendation of the interim superintendent of schools, the Board of Education approve the boundary study for Clarksburg Elementary School #9 be conducted in the spring of 2022.

MBM:ESD:SPA:AK:lm:sr

BOE Adopted Resolution/ Resolución adoptada por el Consejo de Educación

- Conduct a boundary study to include Clarksburg, Gibbs, Little Bennett, and Wilson Wims elementary schools
 - Release boundary report in summer 2022
 - Superintendent to release recommendation in October 2022, as part of amended FY 2023-2028 CIP
 - Board of Education to take action in November 2022
- Realizar un estudio de perímetros para incluir a las escuelas primarias Clarksburg, William Gibbs, Little Bennett, y Wilson Wims
 - Publicar informe de perímetros en el verano de 2022
 - Recomendación del superintendente en octubre del 2022, como parte del CIP enmendado del año fiscal 2023-2028
 - el Consejo de Educación tomará acción en noviembre de 2022

Map of Boundary Study Area / Mapa del área de estudio de límites



Current Projections and Available Seats/ Proyecciones actuales y asientos disponibles

Schools		Official* 2021-2022	Projections					
			2022-2023	2023-2024	2024-2025	2025-2026	2026-2027	2027-2028
Clarksburg ES	Program Capacity	342	342	342	342	342	342	342
	Enrollment	771	875	965	962	977	992	983
	Available Space	-429	-533	-623	-620	-635	-650	-641
Clarksburg #9 ES	Program Capacity	0	0	721	721	721	721	721
	Enrollment	0	0	0	0	0	0	0
	Available Space	0	0	721	721	721	721	721
William B. Gibbs, Jr. ES	Program Capacity	726	726	726	726	726	726	726
	Enrollment	516	552	550	574	579	592	592
	Available Space	210	174	176	152	147	134	134
Little Bennett ES	Program Capacity	621	621	621	621	621	621	621
	Enrollment	642	627	613	595	577	561	570
	Available Space	-21	-6	8	26	44	60	51
Wilson Wims ES	Program Capacity	739	739	739	739	739	739	739
	Enrollment	598	597	595	582	607	624	618
	Available Space	141	142	144	157	132	115	121

* Source: Office of Shared Accountability, as of September 30th, 2021

Policy / Política



Policy FAA – Educational Facilities Planning

Política de Planificación de Instalaciones Educativas de la FAA

FAA

POLICY BOARD OF EDUCATION OF MONTGOMERY COUNTY

Related Entries: ABA, ABC, ABC-RA, ACA, ACD, ACG, ACG-RA, ACG-RB,
DNA, ECM, ECM-RA, FAA-RA, JEE, JEE-RA
Responsible Office: Chief Operating Officer

Educational Facilities Planning

A. PURPOSE

To affirm the Montgomery County Board of Education's commitment to continuing to provide high-quality facilities that support the educational programming needed to ensure that every Montgomery County Public Schools (MCPS) student is well-prepared for success consistent with the Board's core values of Learning, Relationships, Respect, Excellence, and Equity

To establish an educational facilities planning process that effectively anticipates MCPS educational facility needs and establishes a framework for making equitable and fiscally responsible facility decisions in an uncertain future, while considering instructional program priorities, physical condition of the schools, and the impact of under- or overutilized facilities on the educational program

To promote public understanding of MCPS educational facilities planning processes and provide opportunities for stakeholders to engage in, inform, and respond to those processes

To coordinate MCPS facilities planning processes with those of other units of local governments and municipalities in Montgomery County

B. BACKGROUND

Educational facilities planning is essential to identify the infrastructure needed to ensure success for every student. The Board has primary responsibility to plan for educational facilities that sustain high-quality MCPS educational programs while effectively responding to changes in student enrollment, educational programming, and physical plant infrastructure.

<https://www.montgomeryschoolsmd.org/departments/policy/pdf/faa.pdf>

Stakeholder Input/**Aporte de las partes interesadas (Section E)**

- Use multiple strategies to obtain community input which may vary according to the nature, size, and scope of project
- Strategies may include, but not be limited to:
 - Focus groups
 - Task forces
 - Work groups
 - Roundtable discussion groups
 - Surveys
 - And other types of planning sessions
- Utilizar múltiples estrategias para obtener aportes de la comunidad que pueden variar según la naturaleza, el tamaño y el alcance del proyecto
- Las estrategias pueden incluir, pero no se limitan a:
 - Grupos de enfoque
 - Grupos de trabajo
 - Grupos de discusión
 - Grupos de discusión de mesa redonda
 - Encuestas
 - Y otros tipos de sesiones de planificación

Stakeholder Input/ Aporte de las partes interesadas (Section E)

- Superintendent directs staff to develop options to change school boundaries
- Staff develops options for community input to reflect a range of approaches to advance factors and provide rational
- Seek input from multiple stakeholders to advise superintendent on staff-developed options
- El superintendente dirige al personal a desarrollar opciones para cambiar los perímetros escolares
- El personal desarrolla opciones para que la comunidad refleje una variedad de enfoques para promover factores
- Buscar aportes de múltiples partes interesadas para asesorar al superintendente sobre las opciones desarrolladas por el personal

Policy Factors/ Factores de Política (Section G)

Demographic Characteristics of Student Population

- Analyses of options take into account the overall populations of affected schools
- Options should especially strive to create a diverse student body

Geography

- Options should take into account the geographic proximity of communities to schools, as well as articulation, traffic, and transportation patterns, and topography

Características demográficas de la población estudiantil

- Los análisis de opciones tienen en cuenta la población general de las escuelas afectadas
- Las opciones deben esforzarse por crear un cuerpo estudiantil diverso

Geografía

- Las opciones deben tener en cuenta la proximidad geográfica de las comunidades a las escuelas, así como la articulación, el tráfico y los patrones de transporte y topografía

Policy Factors/ **Factores de Política (Section G)**

Stability of School Assignment Over Time

- Options should result in stable assignments for as long a period as possible and consider recent assignments

Facility Utilization

- Plans should result in facility utilization in 80-100% range over the long term, whenever possible
- Shared use of a facility by more than one cluster may be the most feasible plan in some cases
- Plans should be fiscally responsible

Estabilidad de la asignación escolar a largo plazo

- Las opciones deben resultar en asignaciones estables durante el mayor período posible y considerar asignaciones recientes

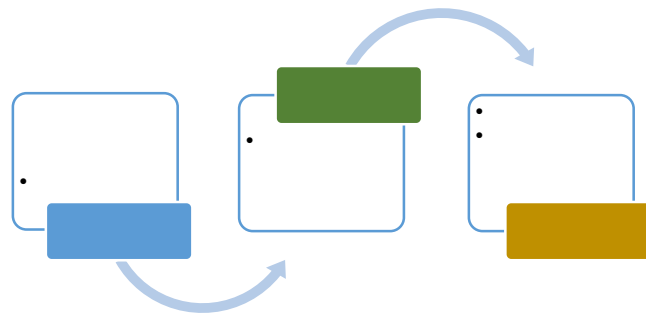
Utilización de instalaciones

- Los planes deben dar como resultado la utilización de los edificios en un rango de 80-100% a largo plazo, siempre que sea posible
- El uso compartido de un edificio por más de un grupo puede ser el plan más factible en algunos casos
- Los planes deben ser fiscalmente responsables

Policy Factors/ Factores de Política (Section G)

- Superintendent will provide a rationale for each recommendation that demonstrates extent to which each factor is advanced
- While each factor will be considered, it may not be feasible to reconcile each and every option with each and every factor
- El superintendente proveerá una justificación para cada recomendación que demuestre el grado en que se avanza cada factor
- Mientras se considerará cada factor, es posible que no sea factible conciliar todas de las opciones con todos los factores

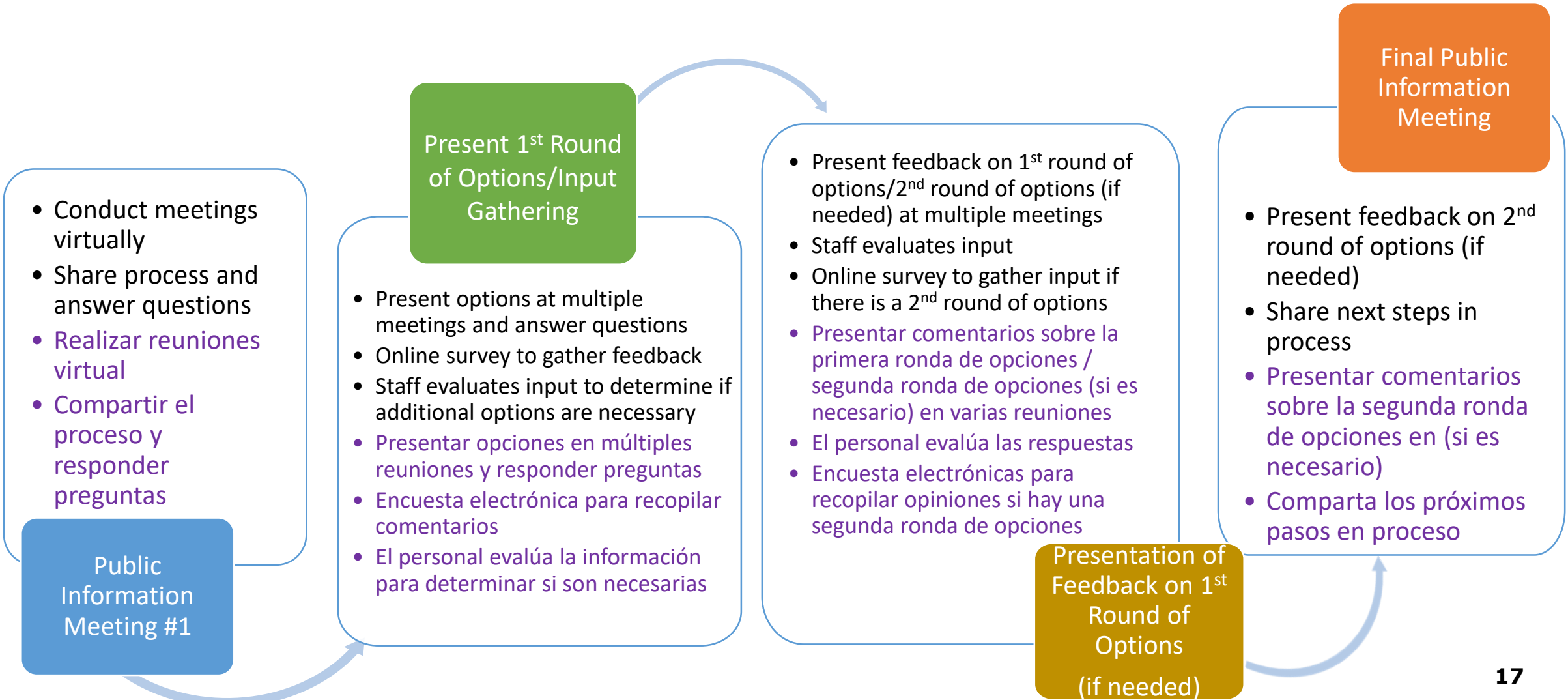
Boundary Process/ Proceso de Límites



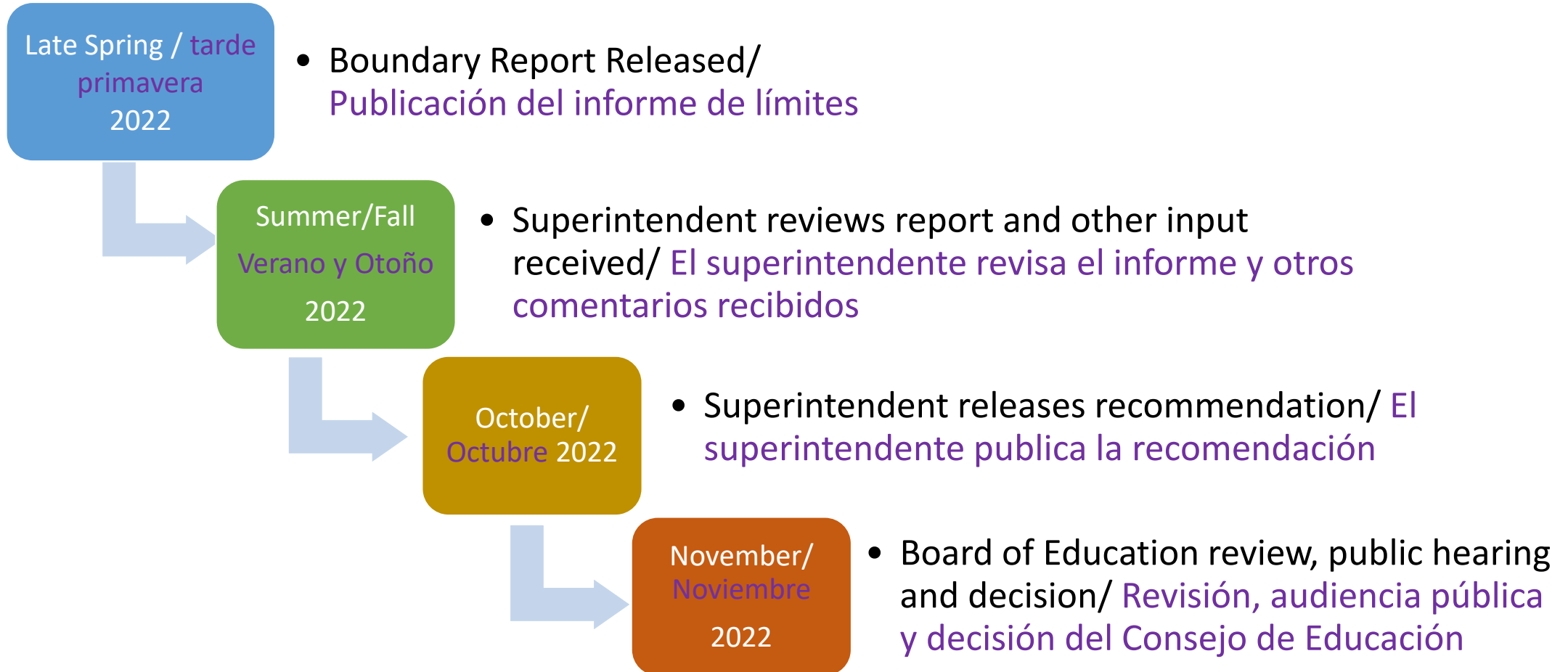
Process / Proceso

- Broad outreach using multiple strategies for obtaining community input which may vary according to the nature, size, and scope of the project/ *Amplio alcance utilizando múltiples estrategias para obtener aportes de la comunidad que pueden variar según la naturaleza, el tamaño y el alcance del proyecto.*
- Policy factors used by staff to create options/ *Factores de Política utilizados por el personal para crear opciones*
- Online surveys/ *encuestas electrónicas*
- Community meetings to gather input/ *Reuniones comunitarias para recopilar opiniones*
- Video of meeting/questions / *Video de reunión/preguntas*
- Letters to superintendent/ *Cartas al superintendente*
- Staff evaluation of online surveys/ *Evaluación de las encuestas electrónicas*

Boundary Process/ Proceso de Límites



Next Steps/Próximos pasos



All meetings to be held from 7:00-8:30pm

Date	Action	Location
March 9 ✓	Public Information Meeting #1	Virtual Meeting
March 10 ✓	Public Information Meeting #1	Virtual Meeting
March 11	Release of Survey #1 https://www.montgomeryschoolsmd.org/departments/planning/ClarksburgES9BoundaryStudy.aspx	Online
March 30	Presentation of 1 st Round of Options/Question and Answers	Virtual Meeting
March 31	Presentation of 1 st Round of Options/Question and Answers	Virtual Meeting
April 27	Presentation of 2 nd Round of Options/Questions and Answers (if needed)	Virtual Meeting
April 28	Presentation of 2 nd Round of Options/Questions and Answers (if needed)	Virtual Meeting
April 29	Release of Survey #2 https://www.montgomeryschoolsmd.org/departments/planning/ClarksburgES9BoundaryStudy.aspx	Online
May 4	Public Information Meeting #2	Virtual Meeting
May 5	Public Information Meeting #2	Virtual Meeting

Websites / Sitios Web

<https://www.montgomeryschoolsmd.org/departments/planning/>

<https://www.montgomeryschoolsmd.org/departments/planning/ClarksburgES9BoundaryStudy.aspx>

boe@mcpsmd.org

Questions/ Preguntas

