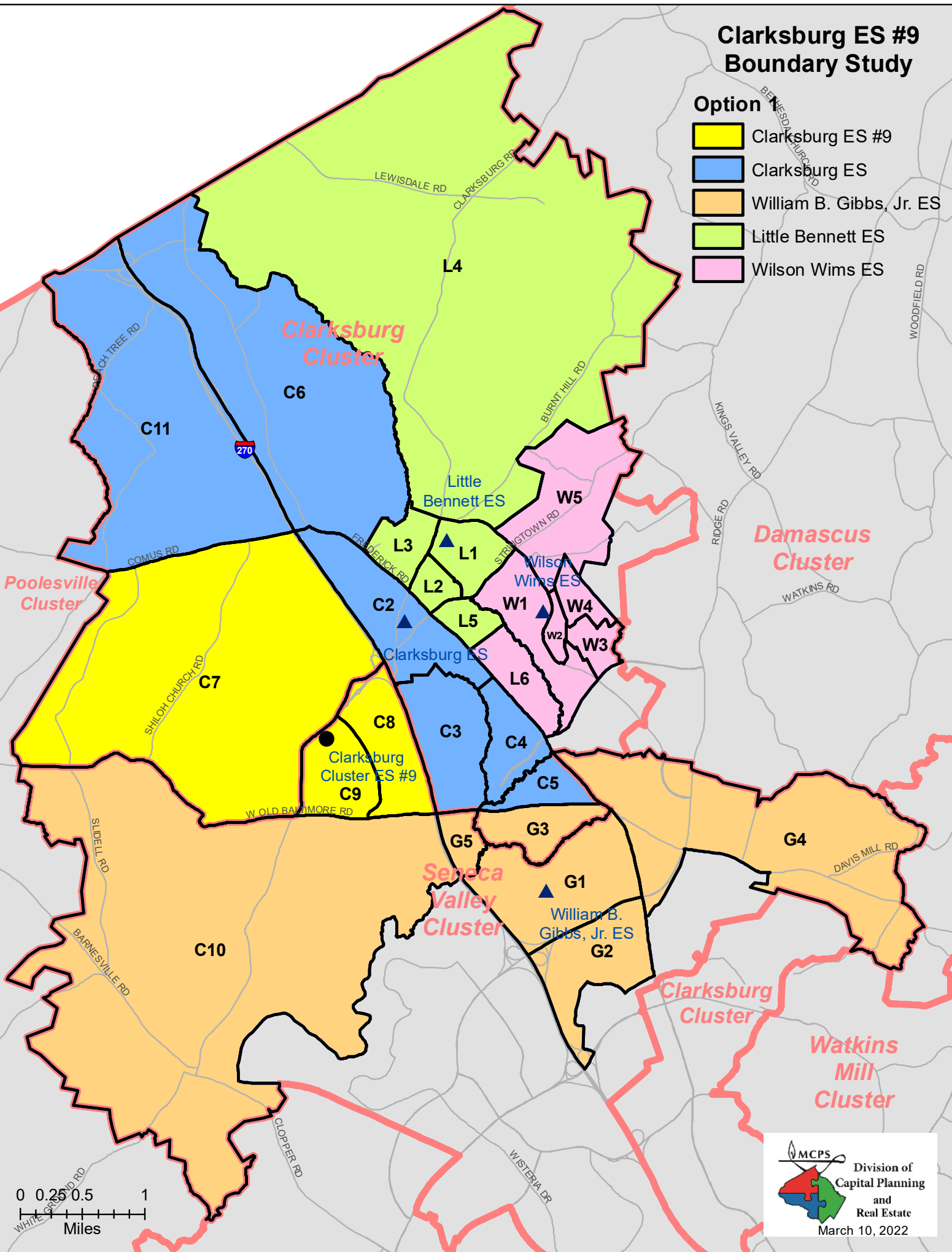


Clarksburg ES #9 Boundary Study

- Option A**
- Clarksburg ES #9
 - Clarksburg ES
 - William B. Gibbs, Jr. ES
 - Little Bennett ES
 - Wilson Wims ES



0 0.25 0.5 1
Miles

Option # 1
Clarksburg ES #9 Boundary Study
 March 2022

Proposed Elementary School Reassignments:

- Zones C7, C8, C9 from Clarksburg ES to Clarksburg #9
- Zone C10 from Clarksburg ES to William B. Gibbs, Jr. ES
- Zone L6 from Little Bennett ES to Wilson Wims ES

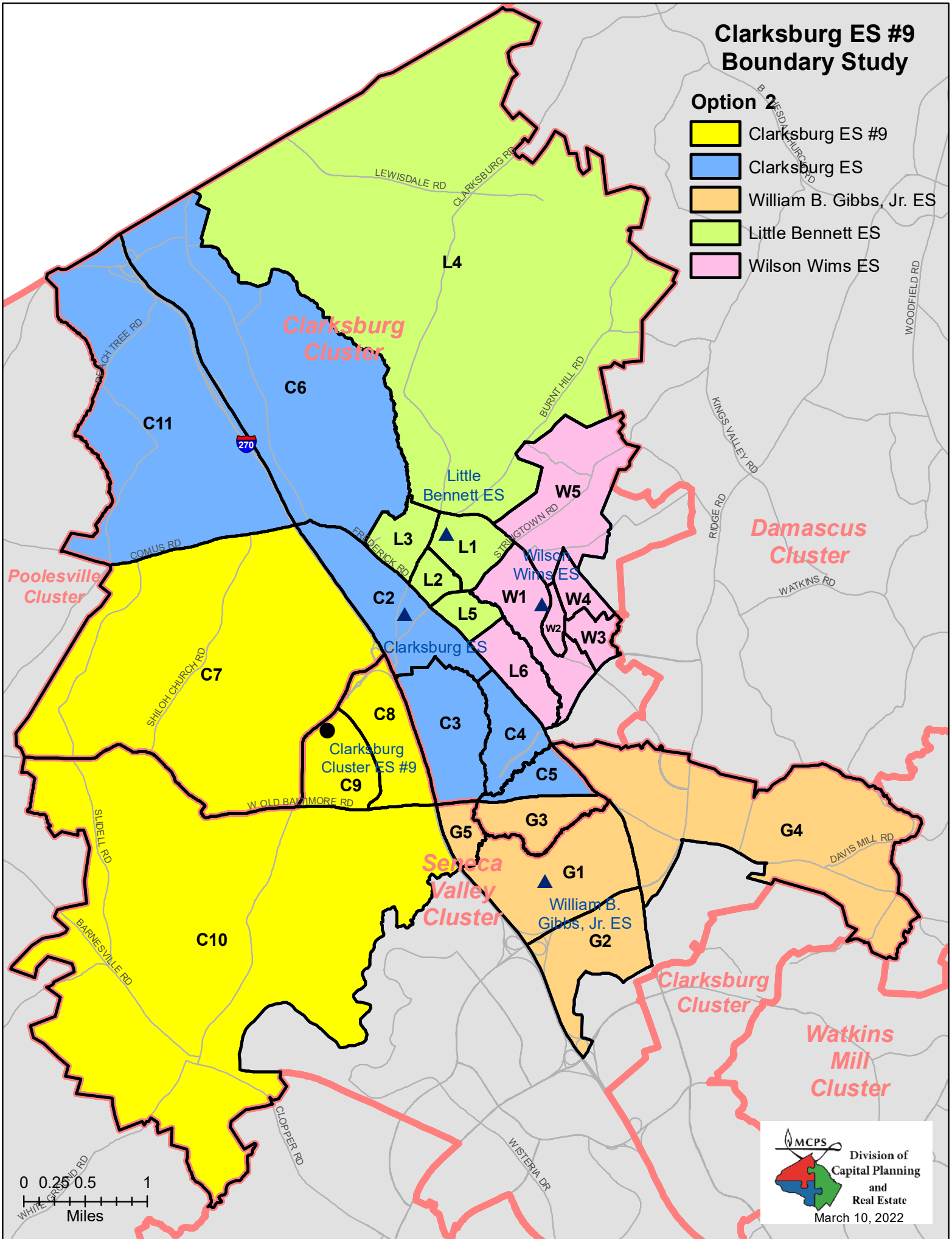
Proposed Elementary School Boundary Reassignments

School						2021-2022						
						Race/Ethnic Composition					% FARMS	% ESOL
	2023-24	2024-25	2025-26	2026-27	2027-28	% Afr. Amer.	% Asian	% Hispanic	% White	% 2 or More		
Clarksburg ES												
Maximum Number of Seats=	342											
No Change:												
Number of Students	965	962	977	992	983	30.0%	37.0%	14.9%	11.2%	6.5%	21.0%	19.5%
Percent of Building Occupied	282%	281%	286%	290%	287%							
Available Seats	-623	-620	-635	-650	-641							
With Change:												
Number of Students	507	392	355	324	283	26.4%	38.3%	16.5%	11.6%	6.3%	22.1%	18.8%
Percent of Building Occupied	148%	115%	104%	95%	83%							
Available Seats	-165	-50	-13	18	59							
Clarksburg ES #9												
Maximum Number of Seats=	721											
No Change:												
Number of Students	0	0	0	0	0	NA	NA	NA	NA	NA	NA	NA
Percent of Building Occupied	0%	0%	0%	0%	0%							
Available Seats	721	721	721	721	721							
With Change:												
Number of Students	421	521	564	602	629	33.9%	38.2%	12.6%	9.8%	5.3%	19.2%	19.7%
Percent of Building Occupied	58%	72%	78%	83%	87%							
Available Seats	300	200	157	119	92							
William B. Gibbs, Jr. ES												
Maximum Number of Seats=	726											
No Change:												
Number of Students	550	574	579	592	592	32.6%	27.1%	19.6%	15.9%	4.7%	31.6%	18.0%
Percent of Building Occupied	76%	79%	80%	82%	82%							
Available Seats	176	152	147	134	134							
With Change:												
Number of Students	587	623	637	658	663	31.3%	26.0%	20.3%	16.5%	5.9%	31.8%	18.3%
Percent of Building Occupied	81%	86%	88%	91%	91%							
Available Seats	139	103	89	68	63							
Little Bennett ES												
Maximum Number of Seats=	621											
No Change:												
Number of Students	613	595	577	561	570	26.8%	27.7%	18.4%	20.4%	5.9%	23.1%	15.6%
Percent of Building Occupied	99%	96%	93%	90%	92%							
Available Seats	8	26	44	60	51							
With Change:												
Number of Students	592	569	550	533	540	27.1%	27.8%	17.9%	20.2%	6.1%	22.5%	15.5%
Percent of Building Occupied	95%	92%	89%	86%	87%							
Available Seats	29	52	71	88	81							
Wilson Wims ES												
Maximum Number of Seats=	739											
No Change:												
Number of Students	595	582	607	624	618	21.9%	41.1%	13.0%	18.9%	4.3%	12.9%	7.5%
Percent of Building Occupied	81%	79%	82%	84%	84%							
Available Seats	144	157	132	115	121							
With Change:												
Number of Students	616	608	634	652	648	21.7%	40.6%	13.7%	19.2%	4.2%	13.8%	7.9%
Percent of Building Occupied	83%	82%	86%	88%	88%							
Available Seats	123	131	105	87	91							

Clarksburg ES #9 Boundary Study

Option 2

- Clarksburg ES #9
- Clarksburg ES
- William B. Gibbs, Jr. ES
- Little Bennett ES
- Wilson Wims ES



0 0.25 0.5 1
Miles

Option # 2
Clarksburg ES #9 Boundary Study
 March 2022

Proposed Elementary School Reassignments:

Zones C7, C8, C9, and C10 from Clarksburg ES to Clarksburg ES #9

Zone L6 from Little Bennett ES to Wilson Wims ES

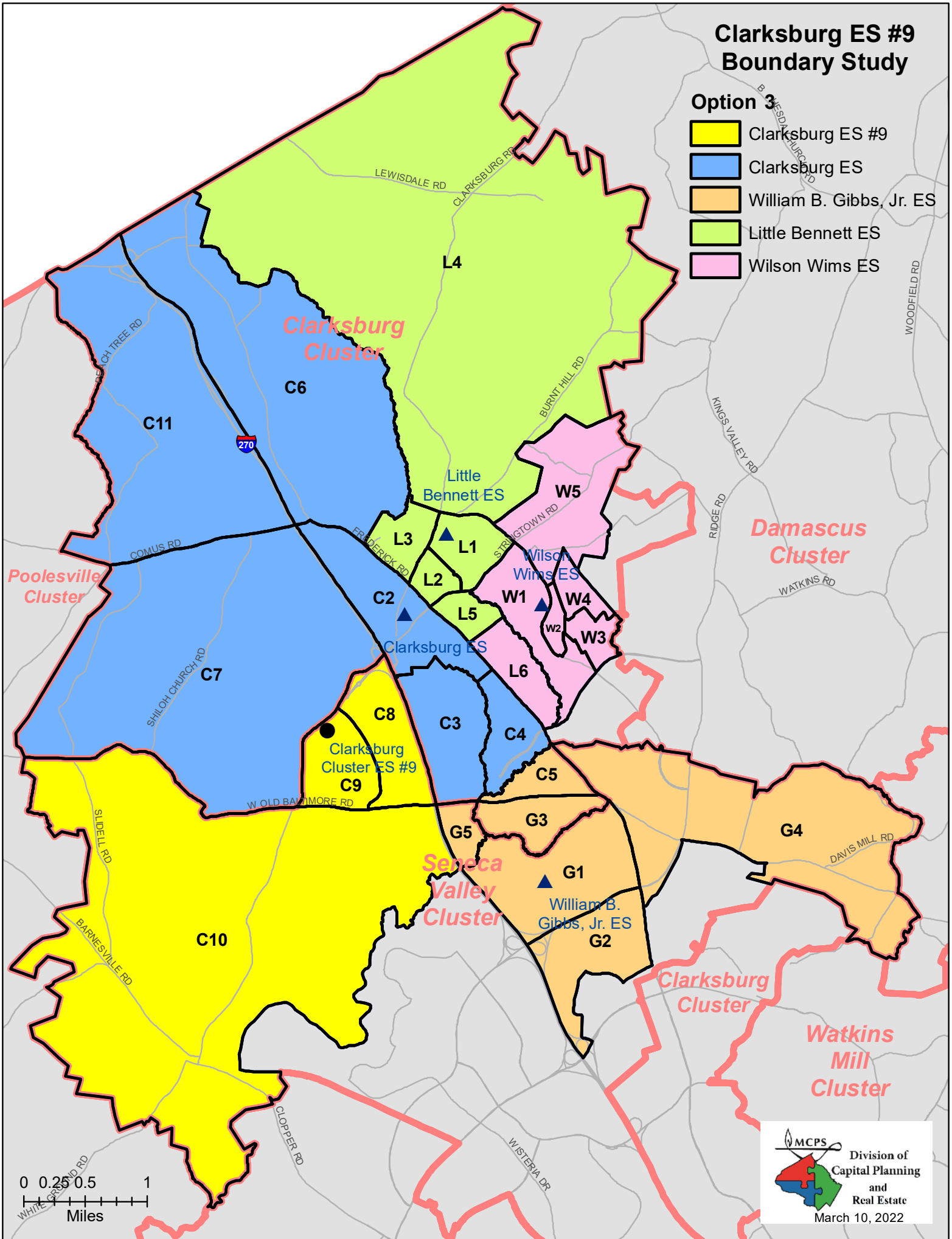
Proposed Elementary School Boundary Reassignments

School						2021-2022						
	2023-24	2024-25	2025-26	2026-27	2027-28	% Afr. Amer.	% Asian	% Hispanic	% White	% 2 or More	% FARMS	% ESOL
Clarksburg ES												
Maximum Number of Seats=	342											
<u>No Change:</u>												
Number of Students	965	962	977	992	983	30.0%	37.0%	14.9%	11.2%	6.5%	21.0%	19.5%
Percent of Building Occupied	282%	281%	286%	290%	287%							
Available Seats	-623	-620	-635	-650	-641							
<u>With Change:</u>												
Number of Students	507	392	355	324	283	26.4%	38.3%	16.5%	11.6%	6.3%	22.1%	18.8%
Percent of Building Occupied	148%	115%	104%	95%	83%							
Available Seats	-165	-50	-13	18	59							
Clarksburg ES #9												
Maximum Number of Seats=	721											
<u>No Change:</u>												
Number of Students	0	0	0	0	0	NA	NA	NA	NA	NA	NA	NA
Percent of Building Occupied	0%	0%	0%	0%	0%							
Available Seats	721	721	721	721	721							
<u>With Change:</u>												
Number of Students	458	570	622	668	700	32.3%	36.1%	13.9%	10.9%	6.6%	20.3%	19.9%
Percent of Building Occupied	64%	79%	86%	93%	97%							
Available Seats	263	151	99	53	21							
William B. Gibbs, Jr. ES												
Maximum Number of Seats=	726											
<u>No Change:</u>												
Number of Students	550	574	579	592	592	32.6%	27.1%	19.6%	15.9%	4.7%	31.6%	18.0%
Percent of Building Occupied	76%	79%	80%	82%	82%							
Available Seats	176	152	147	134	134							
Little Bennett ES												
Maximum Number of Seats=	621											
<u>No Change:</u>												
Number of Students	613	595	577	561	570	26.8%	27.7%	18.4%	20.4%	5.9%	23.1%	15.6%
Percent of Building Occupied	99%	96%	93%	90%	92%							
Available Seats	8	26	44	60	51							
<u>With Change:</u>												
Number of Students	592	569	550	533	540	27.1%	27.8%	17.9%	20.2%	6.1%	21.7%	15.0%
Percent of Building Occupied	95%	92%	89%	86%	87%							
Available Seats	29	52	71	88	81							
Wilson Wims ES												
Maximum Number of Seats=	739											
<u>No Change:</u>												
Number of Students	595	582	607	624	618	21.9%	41.1%	13.0%	18.9%	4.3%	12.9%	7.5%
Percent of Building Occupied	81%	79%	82%	84%	84%							
Available Seats	144	157	132	115	121							
<u>With Change:</u>												
Number of Students	616	608	634	652	648	21.7%	40.6%	13.7%	19.2%	4.2%	13.8%	7.9%
Percent of Building Occupied	83%	82%	86%	88%	88%							
Available Seats	123	131	105	87	91							

Clarksburg ES #9 Boundary Study

Option 3

- Clarksburg ES #9
- Clarksburg ES
- William B. Gibbs, Jr. ES
- Little Bennett ES
- Wilson Wims ES



0 0.25 0.5 1
Miles

Option # 3
Clarksburg ES #9 Boundary Study
 March 2022

Proposed Elementary School Reassignments:

- Zones C8, C9, and C10 from Clarksburg ES to Clarksburg ES #9
- Zone C5 from Clarksburg ES to William B. Gibbs, Jr. ES
- Zone L6 from Little Bennett ES to Wilson Wims ES

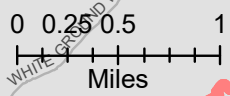
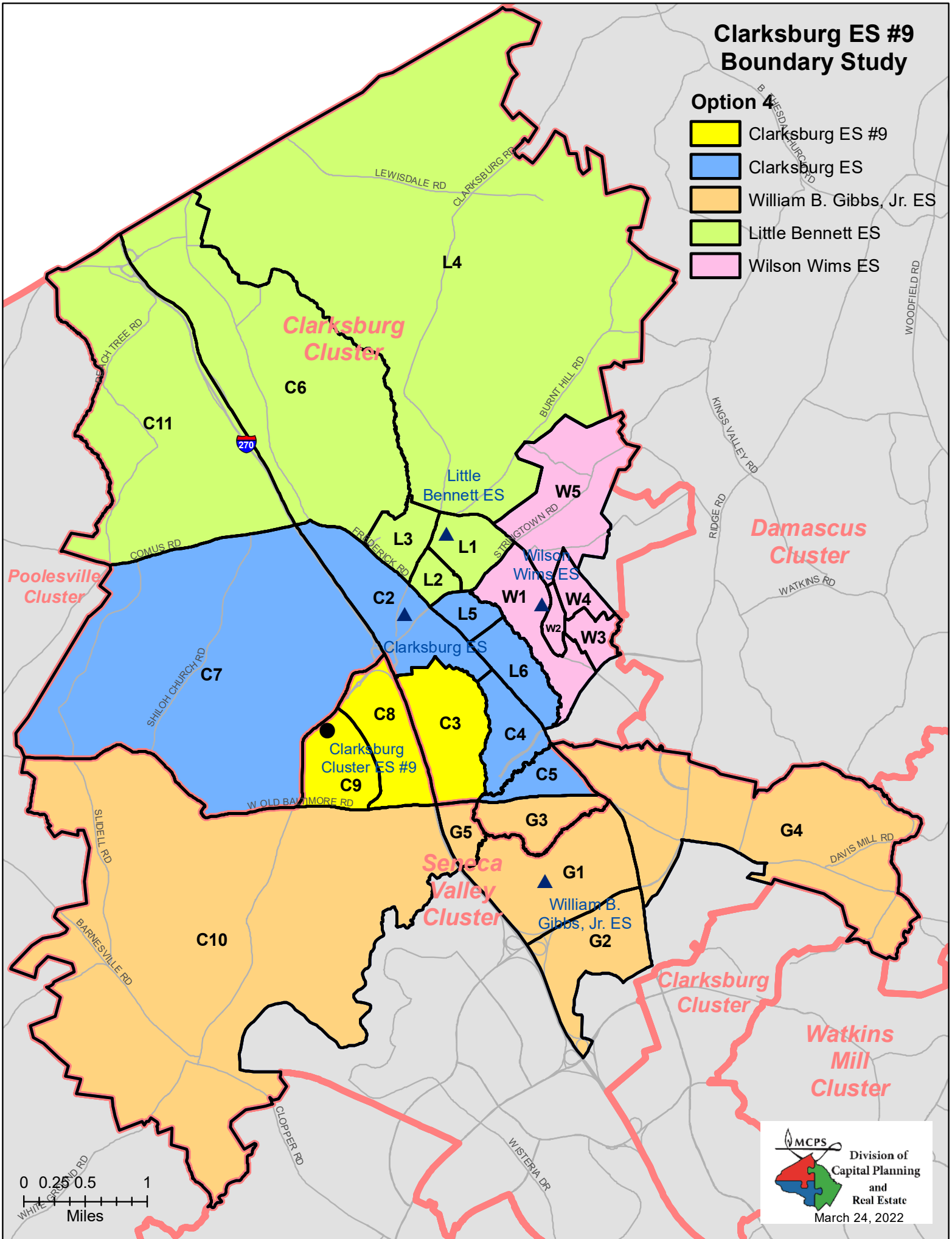
Proposed Elementary School Boundary Reassignments

School	2021-2022					Race/Ethnic Composition					% FARMs	% ESOL
	2023-24	2024-25	2025-26	2026-27	2027-28	% Afr. Amer.	% Asian	% Hispanic	% White	% 2 or More		
Clarksburg ES												
Maximum Number of Seats=	342											
No Change:												
Number of Students	965	962	977	992	983	30.0%	37.0%	14.9%	11.2%	6.5%	21.0%	19.5%
Percent of Building Occupied	282%	281%	286%	290%	287%							
Available Seats	-623	-620	-635	-650	-641							
With Change:												
Number of Students	487	377	371	361	344	26.7%	35.7%	18.1%	12.6%	6.1%	23.1%	17.7%
Percent of Building Occupied	142%	110%	108%	106%	101%							
Available Seats	-145	-35	-29	-19	-2							
Clarksburg ES #9												
Maximum Number of Seats=	721											
No Change:												
Number of Students	0	0	0	0	0	NA	NA	NA	NA	NA	NA	NA
Percent of Building Occupied	0%	0%	0%	0%	0%							
Available Seats	721	721	721	721	721							
With Change:												
Number of Students	442	542	568	591	598	33.1%	37.1%	12.7%	10.1%	6.8%	20.0%	20.0%
Percent of Building Occupied	61%	75%	79%	82%	83%							
Available Seats	279	179	153	130	123							
William B. Gibbs, Jr. ES												
Maximum Number of Seats=	726											
No Change:												
Number of Students	550	574	579	592	592	32.6%	27.1%	19.6%	15.9%	4.7%	31.6%	18.0%
Percent of Building Occupied	76%	79%	80%	82%	82%							
Available Seats	176	152	147	134	134							
With Change:												
Number of Students	586	617	617	632	633	31.4%	28.3%	19.5%	15.7%	4.7%	30.7%	18.6%
Percent of Building Occupied	81%	85%	85%	87%	87%							
Available Seats	140	109	109	94	93							
Little Bennett ES												
Maximum Number of Seats=	621											
No Change:												
Number of Students	613	595	577	561	570	26.8%	27.7%	18.4%	20.4%	5.9%	23.1%	15.6%
Percent of Building Occupied	99%	96%	93%	90%	92%							
Available Seats	8	26	44	60	51							
With Change:												
Number of Students	592	569	550	533	540	27.1%	27.8%	17.9%	20.2%	6.1%	22.5%	15.5%
Percent of Building Occupied	95%	92%	89%	86%	87%							
Available Seats	29	52	71	88	81							
Wilson Wims ES												
Maximum Number of Seats=	739											
No Change:												
Number of Students	595	582	607	624	618	21.9%	41.1%	13.0%	18.9%	4.3%	12.9%	7.5%
Percent of Building Occupied	81%	79%	82%	84%	84%							
Available Seats	144	157	132	115	121							
With Change:												
Number of Students	616	608	634	652	648	21.7%	40.6%	13.7%	19.2%	4.2%	13.8%	7.9%
Percent of Building Occupied	83%	82%	86%	88%	88%							
Available Seats	123	131	105	87	91							

Clarksburg ES #9 Boundary Study

Option 4

- Clarksburg ES #9
- Clarksburg ES
- William B. Gibbs, Jr. ES
- Little Bennett ES
- Wilson Wims ES



Option # 4
Clarksburg ES #9 Boundary Study
 March 2022

Proposed Elementary School Reassignments:

- Zones C3, C8, and C9, from Clarksburg ES to Clarksburg ES #9
- Zones C6 and C11 from Clarksburg ES to Little Bennett ES
- Zone C10 from Clarksburg ES to William B. Gibbs, Jr. ES
- Zones L5 and L6 from Little Bennett ES to Clarksburg ES

Proposed Elementary School Boundary Reassignments

School	2021-2022					Race/Ethnic Composition						
	2023-24	2024-25	2025-26	2026-27	2027-28	% Afr. Amer.	% Asian	% Hispanic	% White	% 2 or More	% FARMS	% ESOL
Clarksburg ES												
Maximum Number of Seats=	342											
No Change:												
Number of Students	965	962	977	992	983	30.0%	37.0%	14.9%	11.2%	6.5%	21.0%	19.5%
Percent of Building Occupied	282%	281%	286%	290%	287%							
Available Seats	-623	-620	-635	-650	-641							
With Change:												
Number of Students	479	369	357	355	342	15.9%	45.1%	19.0%	17.9%	1.0%	15.4%	9.7%
Percent of Building Occupied	140%	108%	104%	104%	100%							
Available Seats	-137	-27	-15	-13	0							
Clarksburg ES #9												
Maximum Number of Seats=	721											
No Change:												
Number of Students	0	0	0	0	0	NA	NA	NA	NA	NA	NA	NA
Percent of Building Occupied	0%	0%	0%	0%	0%							
Available Seats	721	721	721	721	721							
With Change:												
Number of Students	496	602	619	633	635	34.8%	37.9%	12.2%	8.7%	6.2%	21.9%	21.1%
Percent of Building Occupied	69%	83%	86%	88%	88%							
Available Seats	225	119	102	88	86							
William B. Gibbs, Jr. ES												
Maximum Number of Seats=	726											
No Change:												
Number of Students	550	574	579	592	592	32.6%	27.1%	19.6%	15.9%	4.7%	31.6%	18.0%
Percent of Building Occupied	76%	79%	80%	82%	82%							
Available Seats	176	152	147	134	134							
With Change:												
Number of Students	587	623	637	658	663	31.2%	25.9%	20.3%	16.4%	5.8%	31.8%	18.2%
Percent of Building Occupied	81%	86%	88%	91%	91%							
Available Seats	139	103	89	68	63							
Little Bennett ES												
Maximum Number of Seats=	621											
No Change:												
Number of Students	627	613	595	577	561	26.8%	27.7%	18.4%	20.4%	5.9%	23.1%	15.6%
Percent of Building Occupied	101%	99%	96%	93%	90%							
Available Seats	-6	8	26	44	60							
With Change:												
Number of Students	566	537	520	499	505	28.3%	26.5%	18.4%	19.3%	6.9%	23.3%	17.2%
Percent of Building Occupied	91%	86%	84%	80%	81%							
Available Seats	55	84	101	122	116							
Wilson Wims ES												
Maximum Number of Seats=	739											
No Change:												
Number of Students	595	582	607	624	618	21.9%	41.1%	13.0%	18.9%	4.3%	12.9%	7.5%
Percent of Building Occupied	81%	79%	82%	84%	84%							
Available Seats	144	157	132	115	121							