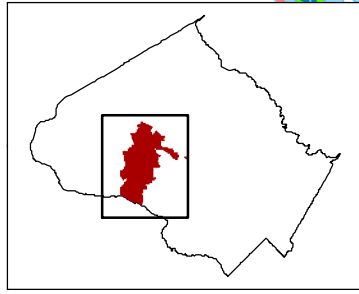


**Northwest HS  
2024-2025 Service Area**

- ▲ Elementary School
- ▲ Middle School
- ▲ High School
- ▲ Special School
- ▭ Northwood HS
- ▭ Elementary School Boundary
- ▭ Middle School Boundary
- ▭ High School Boundary

0 0.35 0.7 1.4  
Miles



Division of  
Capital Planning  
and  
Real Estate