

Rock Terrace School Tilden Middle School Roundtable Discussion Group

Public Information Meeting

March 4, 2015



Agenda

- Introductions
- Background
- Roundtable Discussion Group
- Facility Concepts
- Timeline
- Questions and Answer
- Feedback Forms



Background

Gwendolyn Mason

Director
Department of Special Education Services



Background—Rock Terrace School

- Serves students ages 12-21, countywide
- Focuses on school-to-work programs for students with cognitive disabilities
- Assessed for revitalization/expansion through FACT in 2010–2011
- Received highest score in last FACT assessment; greatest need of all secondary schools
- Rock Terrace School is in need of an up-to-date facility to support students and programs





Background—Tilden MS

- Tilden MS scheduled for revitalization/expansion project in August 2019
- Currently housed on Old Georgetown Road in the closed Woodward High School facility
- Tilden MS is scheduled to move back to the Tilden Lane location
- Tilden MS is centrally located in the county with good access and large middle school site
- Signature Programs include LFI, Aspergers, and LAD

MSDE Capital Funding

- Rock Terrace School in need of an up-to-date facility
- Unlikely to acquire state funding for stand-alone special education centers
- State has funded collocated special education centers
 - MCPS example—Matsunaga ES/Longview School
- Students in stand-alone centers have limited instructional and social opportunities for participation with non-disabled peers when appropriate



BOE Policy IOB—Education of Students with Disabilities

- Improve educational results by assuring access to instruction in the general education class to the maximum extent possible
- Participate to the maximum extent possible students with disabilities with non-disabled peers in all aspects of school life, including academic, social, and extracurricular activities
- Provide a continuum of services for students with disabilities and educating them in the least restrictive environment appropriate for the child



Roundtable Discussion Group

Deborah Szyfer

Senior Planner
Division of Long-range Planning

Roundtable Discussion Group

- On October 28, 2014, superintendent of schools recommended Roundtable to explore possible collocation of Rock Terrace School and Tilden Middle School
- On November 17, 2014 Board of Education approved the Roundtable



Roundtable Discussion Group Charge

- Review the possibility of collocating the Rock Terrace School and Tilden Middle School
- Collocation
 - Not full inclusion
 - Supports BOE and MSDE goals
 - Provides to the maximum extent appropriate interaction of students with disabilities with non-disabled peers in all aspects of school life, including academic, social, and extracurricular activities





Roundtable Discussion Group Charge

- Roundtable Discussion Group:
 - Guided staff and architects in preparing concepts to collocate the two schools on the Tilden MS site
 - Analyzed each of the concepts
 - Serves in an advisory role to the superintendent
 - Submits a summary report to the superintendent that include analysis of each site concept
- Roundtable is not a decision-making forum and will not vote on any of the concepts

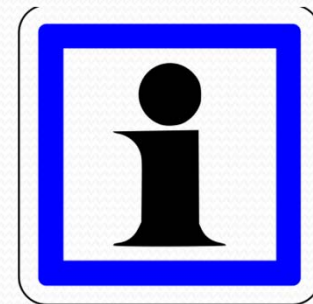
Roundtable Representation

- Staff and parents from Rock Terrace School
- Staff and parents from Tilden Middle School
- MCCPTA Special Populations Committee
- Walter Johnson Cluster
- Staff from Walter Johnson High School



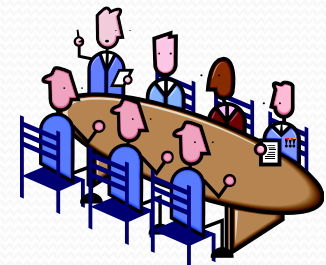
MCPS Staff Role

- Facilitated Roundtable meetings
- Developed concepts with architect
- Provided information requested by Roundtable



Roundtable Activities

- Identified opportunities for special education students to receive instruction in the general education setting to the maximum extent appropriate
- Discussed the facility and site implications
- Conducted site visits to other collocated and soon to be special education programs
- Analyzed the building and site concepts developed by Samaha Architects, PC



Roundtable Criteria

- Plan the physical structures with logistical aspects in mind to ensure that all programmatic needs are addressed
- Meet sensory, motor, and behavioral needs of all students
- Respect and preserve identity of each school
- Provide opportunities for students to interact when appropriate
- Provide supports to teachers to enable successful inclusion outcomes
- Make sure the facilities are built with the future in mind to accommodate future enrollment and technology changes



Roundtable Criteria

- Keep the needs of the neighborhood with respect to transportation and parking
- Maintain career experiences for Rock Terrace School students
- Maintain outdoor space at Tilden Middle School that is unique to the school culture
- Maintain autonomy and integrity of Rock Terrace School and Tilden Middle School for the students
- Create a state-of-the-art facility—cutting edge and innovative
- Be mindful of the sensory needs of the student
- Extra sensitive communication in a building (implementation)



Planning Grid

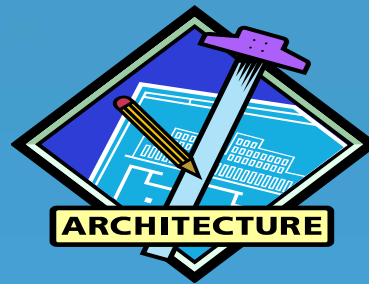
- Table that documents and tracks issues and questions raised by Roundtable
- Will be included as part of the roundtable report

Opportunity/Challenge	Response/Proposed Recommendation
Facility Issues	
Will the revitalization/expansion project for Tilden MS be delayed due to the possible collocation?	The timing of the Tilden MS revitalization/expansion project will not be impacted by the possible collocation with Rock Terrace School.
What is the cost for the possible collocation of Tilden MS and Rock Terrace School?	No cost estimates have been developed for the possible collocation. If the Board of Education approves the collocation of the two schools, a feasibility study will follow which will determine the scope and cost for the collocation of the two schools.

Facility Concepts

Developed by Samaha Architects, PC

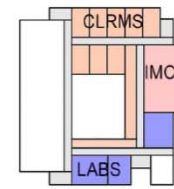
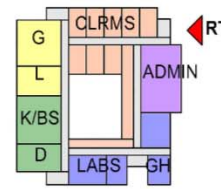
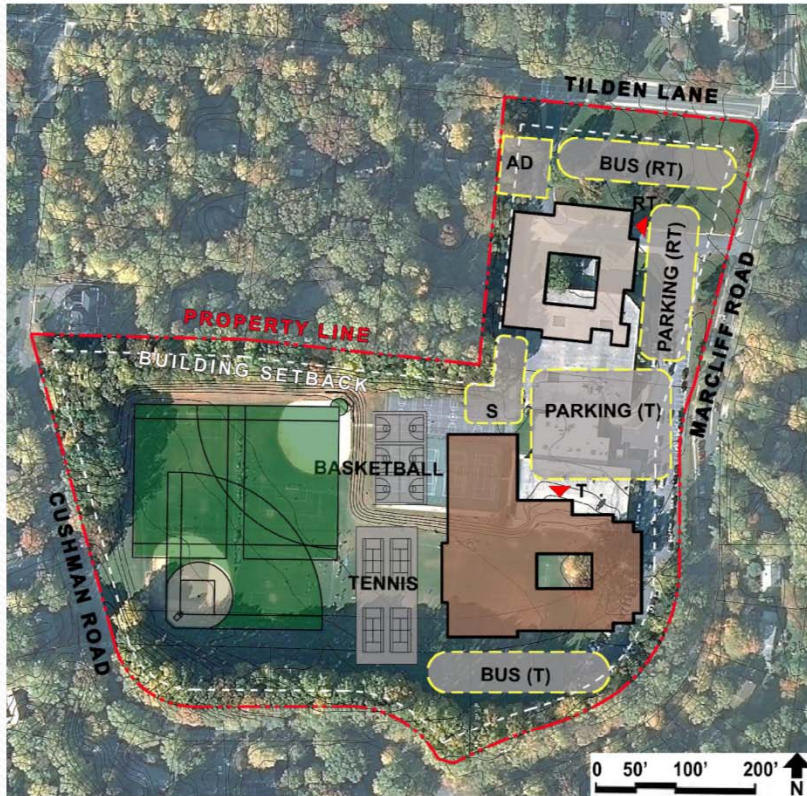
Paul Falkenbury
Principal



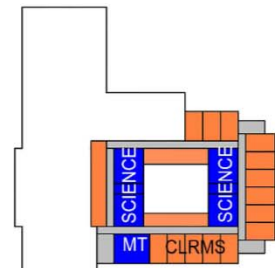
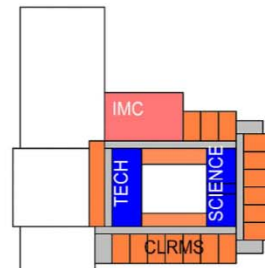
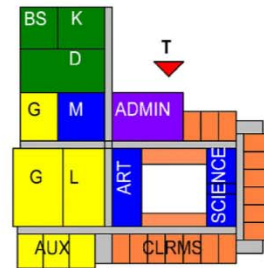
Tilden MS Site



CONCEPT 1



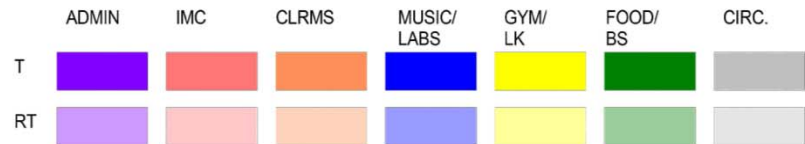
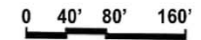
- G GYM
- L LOCKER
- D DINING
- K KITCHEN
- M MUSIC
- BS BUILDING SERVICES
- GH GREENHOUSE
- MT MULTIPURPOSE



FIRST FLOOR

SECOND FLOOR

THIRD FLOOR



Concept 1

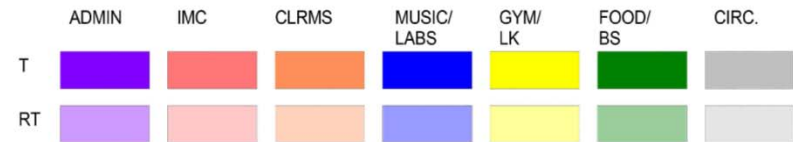
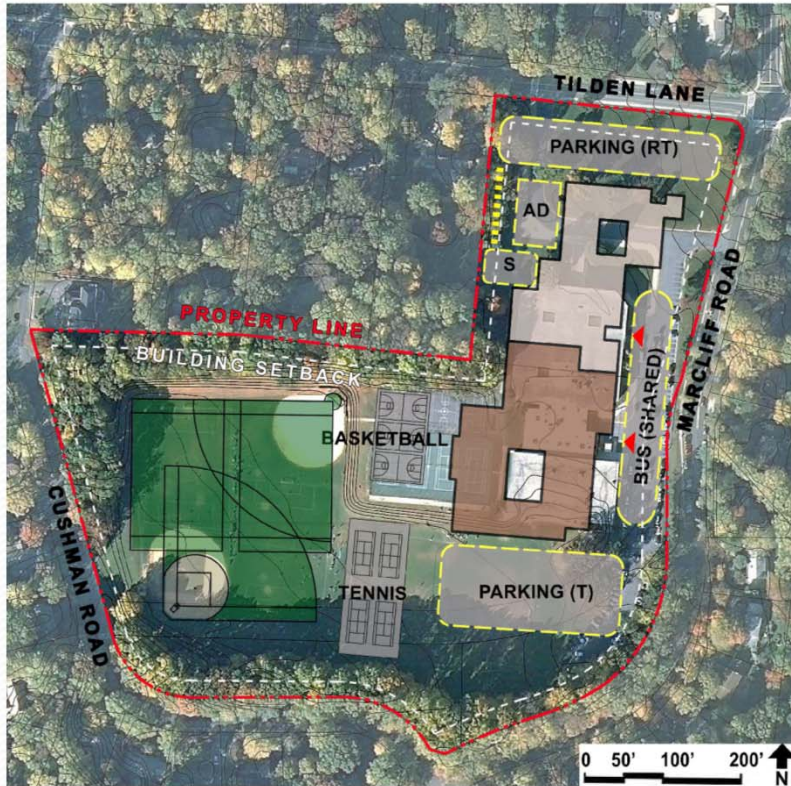
Pros

- Separate entrances and bus loops
- Easy access for Tilden to outdoor space from cafeteria
- Clear identities for both schools
- Some school staff members like two building concept

Cons

- Bus loop & main entrance for Tilden on opposite ends
- Not as cost effective
- Rock Terrace needs easier access to fields
- Bigger footprint/less green space
- Tilden doesn't have access to adaptive physical education area
- Adaptive play area too close to road (safety)
- 3rd story too close to Marcliff Road and neighbors
- Repeats all spaces that could be shared (i.e. building services, kitchen)
- Students would have to go outside to visit other school
- Doesn't promote social inclusion

CONCEPT 3



Concept 3

Pros

- Two separate entrances with shared administration suite
- Main entrances connected to bus loops
- Economies of scale with shared Administration and staff areas
- Maneuverability between schools better than Option 1
- Tilden MS has good access to fields

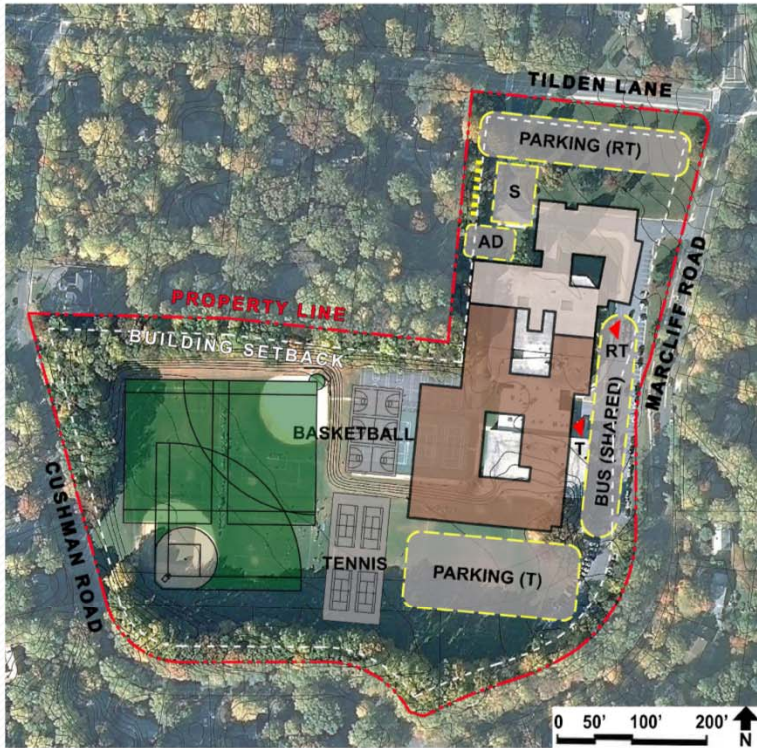
Cons

- No separation between two schools
- Culinary Arts not near kitchen
- Garden area should be close to greenhouse
- Need clear delineation schools
- Need daylight access in Rock Terrace dining
- Adaptive physical education area close to parking and service
- Rock Terrace does not have good access to fields
- Music next to classroom (noise)

Rock Terrace School & Tilden Middle School



CONCEPT 4



- TILDEN MIDDLE SCHOOL
- ROCK TERRACE SCHOOL
- S SERVICES AREA
- AD ADAPTIVE PLAY AREA
- MAIN ENTRANCE



- G GYM
- L LOCKER
- D DINING
- K KITCHEN
- M MUSIC
- BS BUILDING SERVICES
- GH GREENHOUSE
- MT MULTIPURPOSE

- | | | | | | | | |
|----|--|--|--|--|--|--|--|
| | ADMIN | IMC | CLRMS | MUSIC/LABS | GYM/LK | FOOD/BS | CIRC. |
| T | | | | | | | |
| RT | | | | | | | |

Concept 4

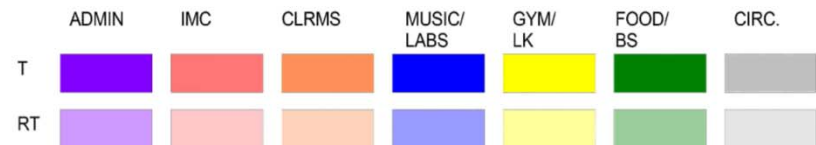
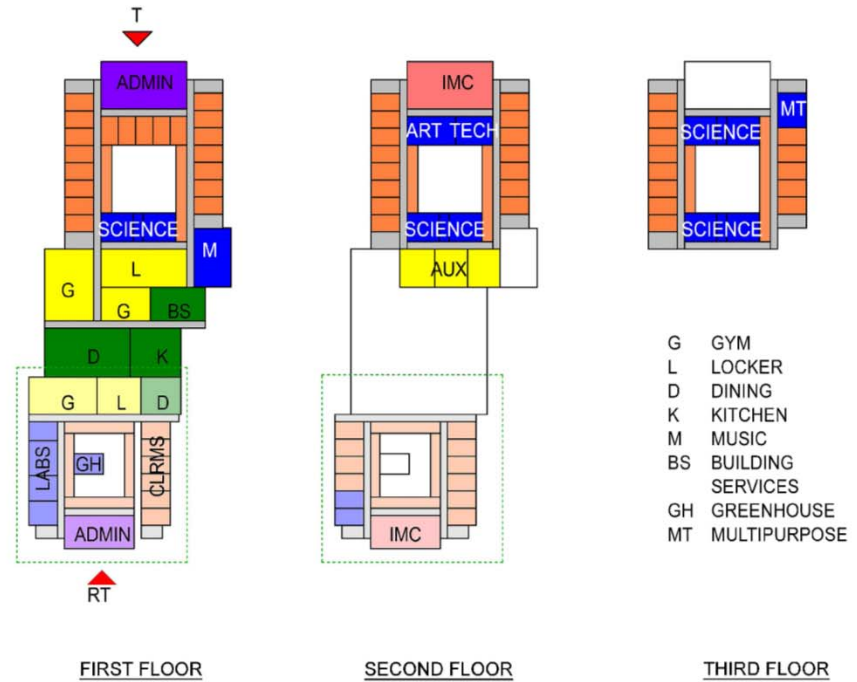
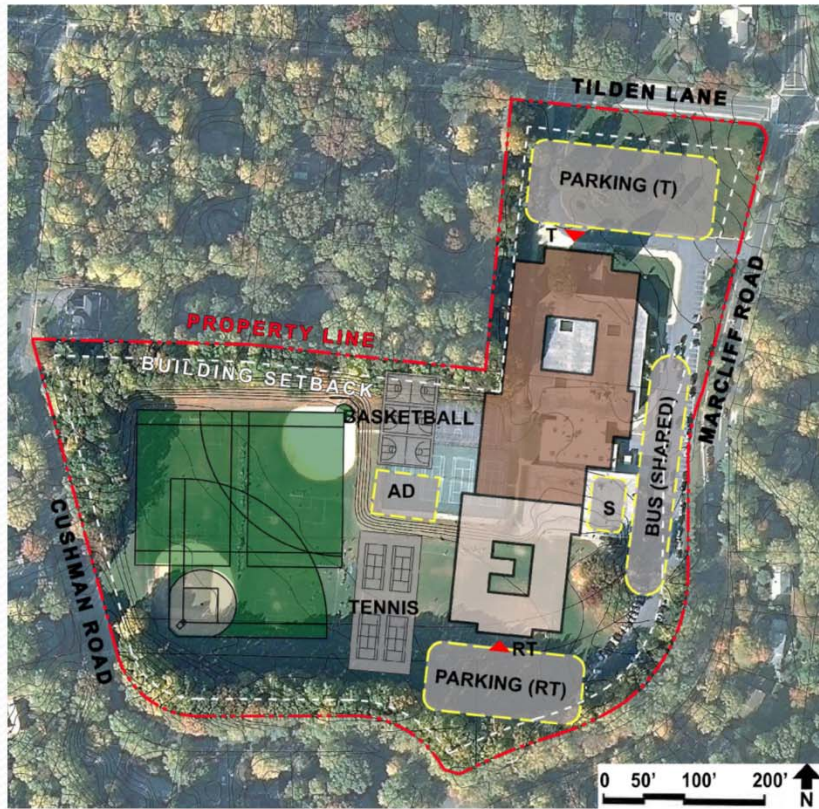
Pros

- 3 courtyards
- Separate gyms
- Combined courtyard for schools to share
- Greenhouse location
- Clearly defined school division
- Separate entrances; shared administration
- Music room proximity to cafeteria/gym and other classes (noise)

Cons

- Basketball and tennis courts are far away from Rock Terrace
- Combined courtyard
- Concern with location of greenhouse
- Entrances too close together
- Large building footprint
- Adaptive physical education area close to parking and service
- Shared media center
- Service area too close to adaptive physical education area

CONCEPT 5



Concept 5

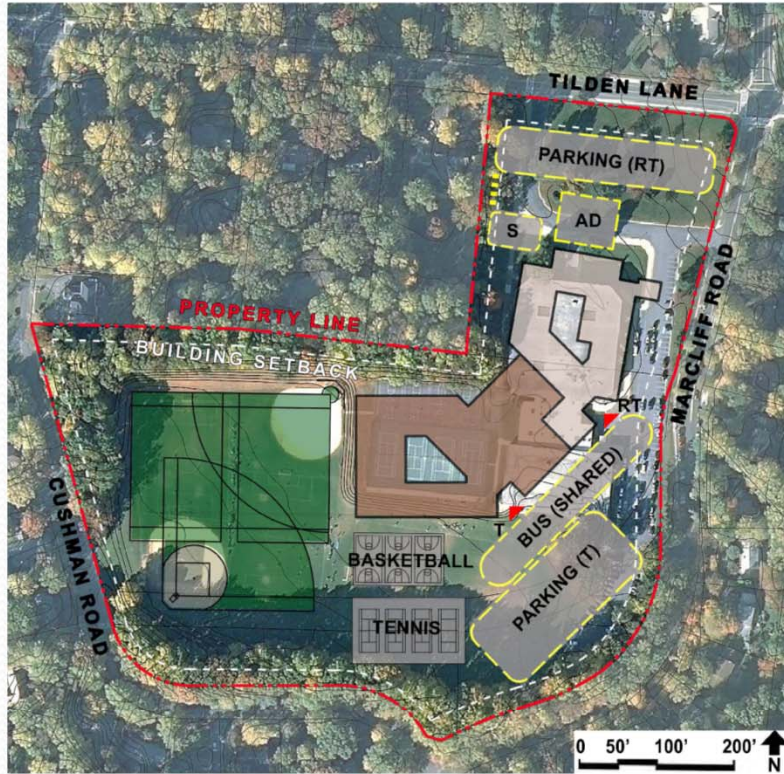
Pros

- Separate administration/school entrances
- Tilden Middle School is on Tilden Lane
- Dining has easy access to outdoors
- Outdoor student areas separate from traffic (safer)
- Service area works with parking
- Greenhouse location—seems to have room for garden beds
- Tilden is visible from Tilden Lane
- Offices are separate

Cons

- Rock Terrace main entrance is hidden
- 3rd story on Tilden Lane closer to neighbors
- Separate administration and media centers
- Adaptive physical education area not adjacent to Rock Terrace building and between basketball and tennis courts not ideal
- Tilden MS entrance should face street not woods
- Music next to classroom (noise)
- Administration office should be central

CONCEPT 7



TILDEN MIDDLE SCHOOL	S SERVICES AREA	MAIN ENTRANCE
ROCK TERRACE SCHOOL	AD ADAPTIVE PLAY AREA	

- G GYM
- L LOCKER
- D DINING
- K KITCHEN
- M MUSIC
- BS BUILDING SERVICES
- GH GREENHOUSE
- MT MULTIPURPOSE



	ADMIN	IMC	CLRMS	MUSIC/LABS	GYM/LK	FOOD/BS	CIRC.
T							
RT							

Concept 7

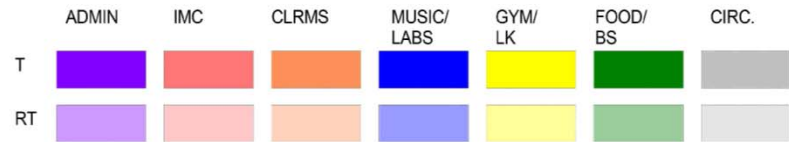
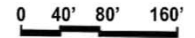
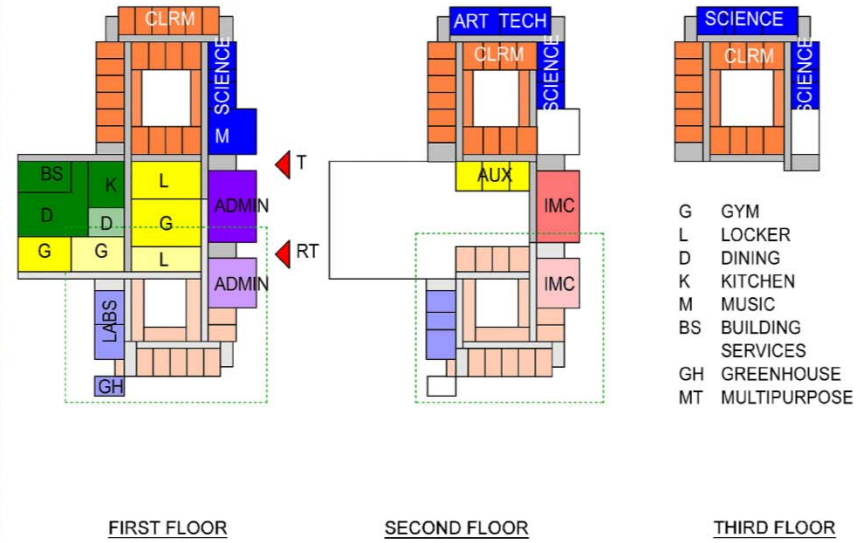
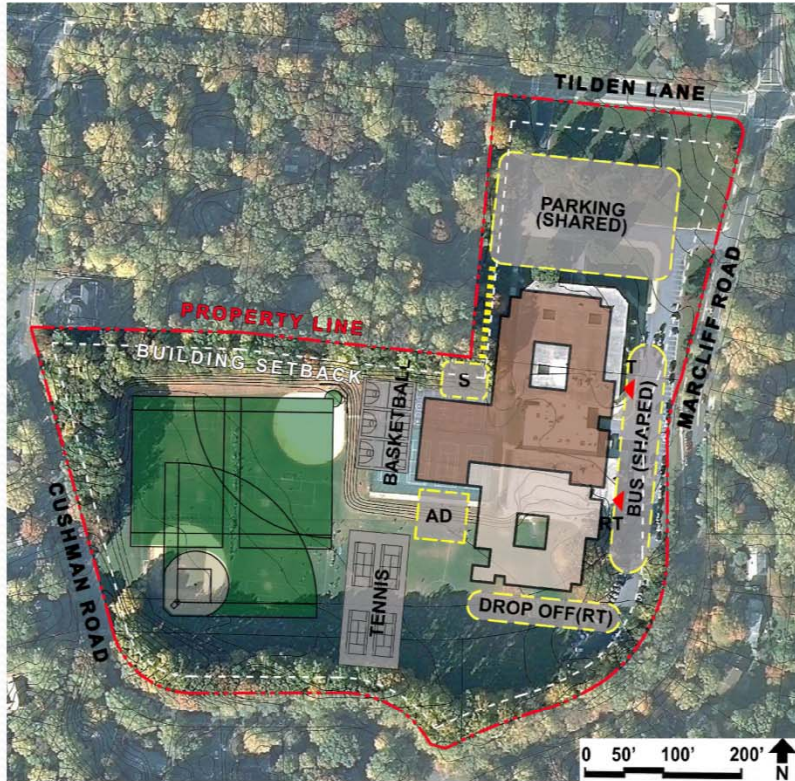
Pros

- Separate main entrances with shared administrative suite
- Shared media center
- 3rd story tucked in away from street/neighbors
- Service area doesn't have to be crossed
- Location of greenhouse provides ideal sunlight
- Cool shape
- Easy parking access for both schools
- Aesthetically pleasing from Tilden Lane

Cons

- Rock Terrace far from fields
- Adaptive play area too close to parking
- Greenhouse location not ideal
- Loss of green space
- Parking not shared
- Tilden Middle School cafeteria too far from courts
- Rock Terrace students cannot access courts
- Music next to classrooms—noise
- Location of service area near Rock Terrace

CONCEPT 8



Concept 8

Pros

- Tilden dining adjacent to courts
- Athletics together
- Long corridors provide accessible link between schools
- Separate media centers
- Good location for service area
- Administration space is close but not shared
- Two Separate entrances
- Shared parking
- Best plan
- Seems to preserve green space
- Shared parking
- Outdoor fields close to Rock Terrace

Cons

- Administration and media centers not shared
- Rock Terrace dining area doesn't have windows
- Parking/access to Rock Terrace is difficult
- Location of gyms—Tilden students would need to go through Rock Terrace to get to 2nd gym
- Entrances too close
- Music next to classrooms—noise

Superintendent and Board Timeline



Superintendent's Recommendation

- Will consider the analyses and input from the roundtable and community
- Will make a recommendation on March 23, 2015
- Will not impact the revitalization/expansion schedule for Tilden MS (August 2019)





BOE Timeline

- April 14, 2015 BOE Work session
- April 27, 2015 Public Hearing
- May 12, 2015 Final Action

- If collocation is approved by the BOE, it would occur at the completion of the revitalization/expansion projects of both schools.

Questions/Answers

[www.montgomeryschoolsmd.org/departments/planning/
CommunityInfo_Roundtable.shtml](http://www.montgomeryschoolsmd.org/departments/planning/CommunityInfo_Roundtable.shtml)

