

Clarksburg, Northwest, and Seneca Valley Clusters Boundary Study

Presentation of First Round of Options
April 8, 9, and 11, 2019

<https://www.montgomeryschoolsmd.org/departments/planning/UpcountyHSBoundaryStudy.aspx>



Agenda

- Stakeholder Engagement Update
- Policy Factors
- Guiding Parameters for Development of 2nd Round of Options
- Presentation of 2nd Round Options
- Questions and Answers
- Next Steps



Stakeholder Engagement Update

- In order to continue stakeholder engagement, the survey will continue to remain available online
- To date:
 - Total of 4,146 respondents (can check more than one)
 - 2,919 – Parents of students
 - 650 – Community members with no children in MCPS
 - 257 – MCPS employees
 - 625 – MCPS students



Policy FAA Factors



Policy FAA Factors

- Demographic Characteristics of Student Population
 - Analyses of options take into account the overall populations of affected schools
 - Options should especially strive to create a diverse student
- Geography
 - Options should take into account the geographic proximity of communities to schools, as well as articulation, traffic, and transportation patterns, and topography

Policy Factors

- **Stability of School Assignment Over Time**
 - Options should result in stable assignments for as long a period as possible and should consider recent assignments
- **Facility Utilization**
 - Plans should result in facility utilization in 80-100% range over the long term, whenever possible.
 - Shared use of a facility by more than one cluster may be the most feasible plan in some cases
 - Plans should be fiscally responsible

Parameters for Option Development



Guiding Parameters for Option Development

- No options will provide full capacity relief for Clarksburg HS and Northwest HS
- Anticipated that the new Crown High School will provide capacity relief to Northwest HS
- Most options will provide more capacity relief to Clarksburg HS than Northwest HS
- Developed options grandfather Grades 11 and 12 at the high school level and Grade 8 at the middle school level
 - BOE will make final decision

Guiding Parameters for 2nd Round of Options Development

- Three policy factors used to develop options
 - Demographic Characteristics of Student Population
 - Geography
 - Facility Utilization
- Try and avoid triple articulation at the middle school level
- Try to maintain walkers at high schools and middle schools

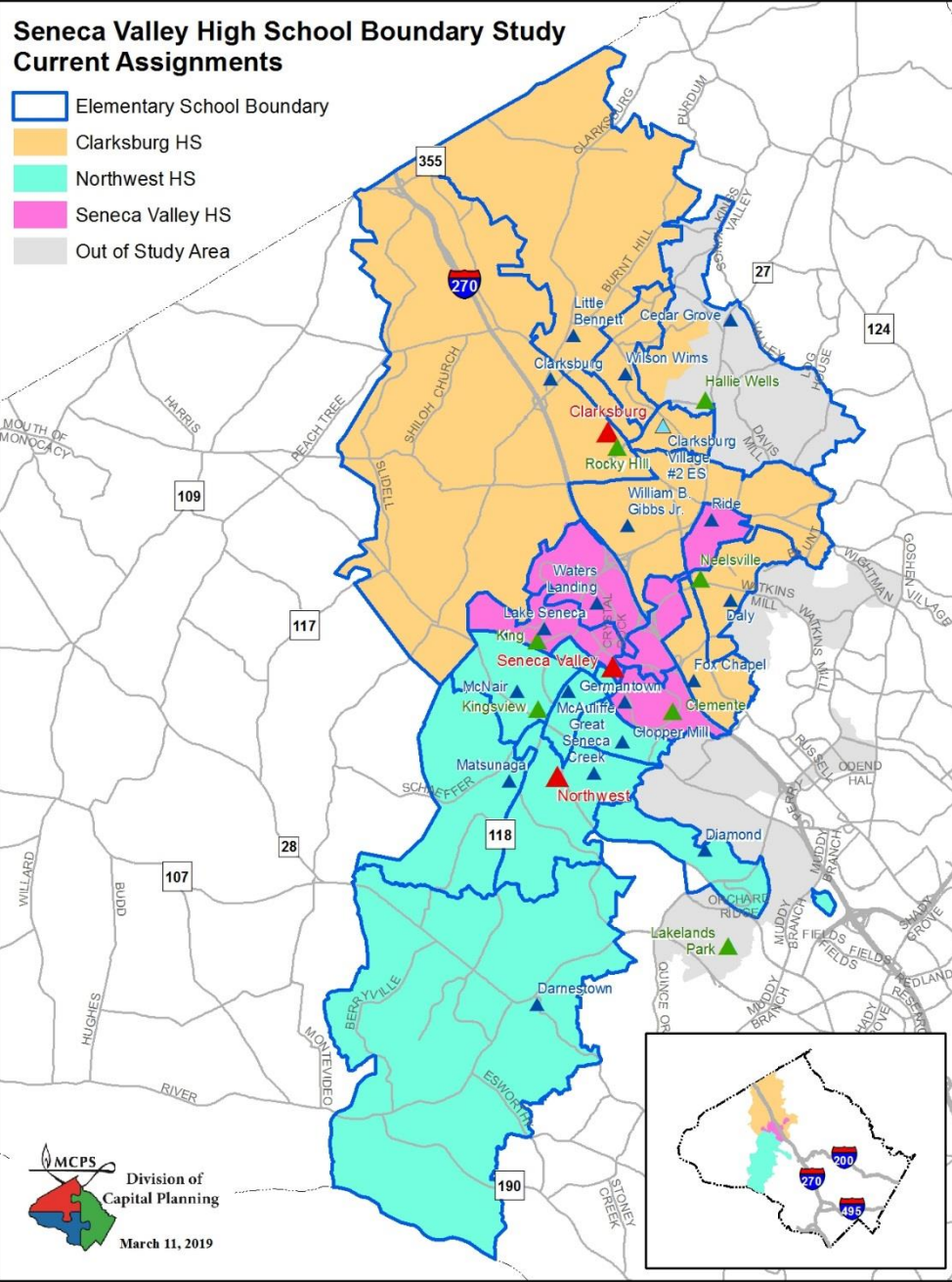
Current Information

Current HS Data








School	Projected Number of Students					2018-19 Race/Ethnic Composition						
	2020-21	2021-22	2022-23	2023-24	2024-25	% Afr. Amer.	% Asian	% Hispanic	% White	% 2 or More	% FARMs	% ESOL
	Clarksburg HS											
Maximum Number of Seats= 2,034												
Number of Students	2,374	2,487	2,668	2,757	2,848	28.7%	20.4%	26.8%	19.6%	4.3%	27.5%	8.2%
<i>Percent of Building Occupied</i>	117%	122%	131%	136%	140%							
Available Seats	-340	-453	-634	-723	-814							
Northwest HS												
Maximum Number of Seats= 2,286												
Number of Students	2,727	2,776	2,873	2,974	2,981	25.7%	21.1%	21.7%	26.9%	4.4%	22.5%	3.2%
<i>Percent of Building Occupied</i>	119%	121%	126%	130%	130%							
Available Seats	-441	-490	-587	-688	-695							
Seneca Valley HS												
Maximum Number of Seats= 2,581												
Number of Students	1,203	1,214	1,256	1,281	1,301	34.6%	10.9%	35.8%	14.5%	4.1%	39.0%	14.1%
<i>Percent of Building Occupied</i>	47%	47%	49%	50%	50%							
Available Seats	1,378	1,367	1,325	1,300	1,280							

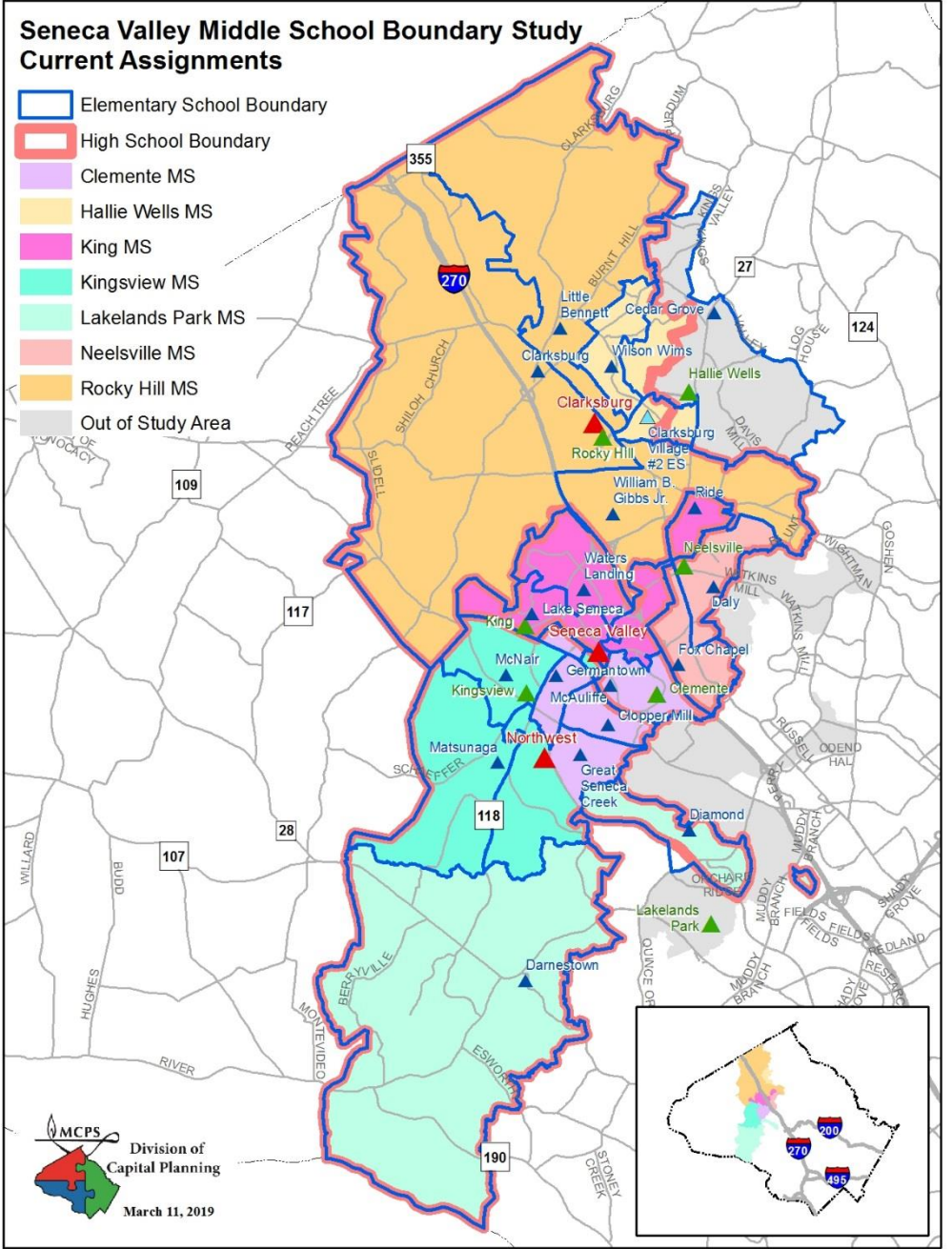
Seneca Valley High School Boundary Study Current Assignments

-  Elementary School Boundary
-  Clarksburg HS
-  Northwest HS
-  Seneca Valley HS
-  Out of Study Area



Seneca Valley Middle School Boundary Study Current Assignments

-  Elementary School Boundary
-  High School Boundary
-  Clemente MS
-  Hallie Wells MS
-  King MS
-  Kingsview MS
-  Lakelands Park MS
-  Neelsville MS
-  Rocky Hill MS
-  Out of Study Area



2nd Round of Options—Please click on the link below for the options and maps

- [English Options](#)



Revised (in bold) Average Time on the Bus

	Average Amount of Time
McNair ES service area to Seneca Valley HS	15 minutes
Daly ES service area to Clarksburg HS	14 minutes
Daly ES service area to Seneca Valley HS	15 minutes
Gibbs ES service area to Clarksburg HS	15 minutes
Gibbs ES service area to Seneca Valley HS	15 minutes
Fox Chapel ES service area to Clarksburg HS	18 minutes
Fox Chapel ES service area to Seneca Valley HS	15 minutes
Little Bennett ES service area to Clarksburg HS	25 minutes
Little Bennett ES service area to Seneca Valley HS	40 minutes
Darnestown ES service area to Northwest HS	40 minutes
Darnestown ES service area to Seneca Valley HS	45 minutes

Average Time on the Bus

	Average Amount of Time
Cabin Branch Develop Area to Clarksburg HS	13 minutes
Cabin Branch Development to Seneca Valley HS	28 minutes
Southern portion of Clarksburg ES to Clarksburg HS	33 minutes
Southern portion of Clarksburg ES to Seneca Valley HS	41 minutes

Interactive Map

- <https://mcpsgis.maps.arcgis.com/apps/PublicInformation/index.html?appid=8e721ff7cdd24b27a3754d72083d3e66>

Next Steps

- Evaluation Forms for Tonight's Meeting (Pink Sheets)
- Stakeholder Survey for 2nd Round of Options will be available at end of process
- Next Round of Meetings:
 - Monday, April 29—Seneca Valley HS
 - Tuesday, April 30—Northwest HS
 - Wednesday, May 1—Clarksburg HS

Questions and Answers

