

Clarksburg, Northwest, and Seneca Valley Clusters Boundary Study

2nd Round of Options—April 2019

<p>Option #8 (Var. on Option 3)</p>	<p><u>Proposed High School Reassignments</u> Reassign Capt. James E. Daly ES and William B. Gibbs ES (Except the area south of West Old Baltimore Rd, west of Route 355, north of Little Seneca Creek, and east of I-270) from Clarksburg HS to Seneca Valley HS Reassign Clopper Mill ES and Spark M. Matsunaga ES Islands from Northwest HS to Seneca Valley HS</p> <p><u>Proposed Middle School Reassignments</u> Reassign Fox Chapel ES from Neelsville MS to Rocky Hill MS Reassign William B. Gibbs ES (Except the area south of West Old Baltimore Rd, west of Route 355, north of Little Seneca Creek, and east of I-270) from Rocky Hill MS to Neelsville MS Reassign Spark M. Matsunaga ES Island from Kingsview MS to Martin Luther King Jr. MS Reassign Portion of Great Seneca Creek ES from Clemente MS to Kingsview MS</p>
<p>Option #9 (Var. on Option 3)</p>	<p><u>Proposed High School Reassignments</u> Reassign Capt. James E. Daly and William B. Gibbs ES (Except the area south of West Old Baltimore Rd, west of Route 355, north of Little Seneca Creek, and east of I-270) from Clarksburg HS to Seneca Valley HS Reassign Germantown ES from Northwest HS to Seneca Valley HS Reassign Clopper Mill ES and Spark M. Matsunaga ES Islands from Northwest HS to Seneca Valley HS</p> <p><u>Proposed Middle School Reassignments</u> Reassign Fox Chapel ES from Neelsville MS to Rocky Hill MS Reassign William B. Gibbs ES (Except the area south of West Old Baltimore Rd, west of Route 355, north of Little Seneca Creek, and east of I-270) from Rocky Hill MS to Neelsville MS Reassign Spark M. Matsunaga ES Island from Kingsview MS to Martin Luther King Jr. MS Reassign Portion of Great Seneca Creek ES from Clemente MS to Kingsview MS</p>
<p>Option #10 (Var. on Option 6)</p>	<p><u>Proposed High School Reassignments</u> Reassign Fox Chapel ES and a portion of William B. Gibbs ES (South of Little Seneca Creek, and West of Route 355 and Brink Rd.) from Clarksburg HS to Seneca Valley HS Reassign northern portion of Germantown ES (forested area south of Fountain Hills Dr) from Northwest HS to Seneca Valley HS Reassign the Clopper Mill ES and Spark M. Matsunaga ES Islands from Northwest HS to Seneca Valley HS</p> <p><u>Proposed Middle School Reassignments</u> Reassign Fox Chapel ES from Neelsville MS to Rocky Hill MS Reassign portion of William Gibbs ES (South of West Old Baltimore Rd, west of Route 355, north of Little Seneca Creek, and east of I-270) from Rocky Hill MS to Neelsville MS Reassign portion of Great Seneca Creek ES from Clemente MS to Kingsview MS Reassign Spark M. Matsunaga ES Island from Kingsview MS to Martin Luther King, Jr. MS</p>
<p>Option #11</p>	<p><u>Proposed High School Reassignments</u> Reassign the Cabin Branch Development and the area south of West Old Baltimore Road and west of I-270 from Clarksburg ES and William B. Gibbs ES (Except the area south of West Old Baltimore Rd, west of Route 355, north of Little Seneca Creek, and east of I-270) from Clarksburg HS to Seneca Valley HS Reassign the Clopper Mill ES and Spark M. Matsunaga ES islands from Northwest HS to Seneca Valley HS</p> <p><u>Proposed Middle School Reassignments</u> Reassign Capt. James E. Daly ES and Fox Chapel ES from Neelsville MS to Rocky Hill MS Reassign Cabin Branch Development and the area south of West Old Baltimore Road and west of I-270 from Clarksburg ES and William B. Gibbs ES (Except the area south of West Old Baltimore Rd, west of Route 355, north of Little Seneca Creek, and east of I-270) from Rocky Hill MS to Neelsville MS Reassign portion of Great Seneca Creek ES from Clemente MS to Kingsview MS Reassign Spark M. Matsunaga ES Island from Kingsview MS to Martin Luther King, Jr. MS</p>
<p>Option #11a</p>	<p><u>Proposed High School Reassignments</u> Reassign the Cabin Branch Development and area south of West Old Baltimore Road and west of I-270 from Clarksburg ES and William B. Gibb ES (Except the area south of West Old Baltimore Rd, west of Route 355, north of Little Seneca Creek, and east of I-270) from Clarksburg HS to Seneca Valley HS Reassign Clopper Mill ES and Spark M. Matsunaga ES Islands from Northwest HS to Seneca Valley HS Reassign Germantown ES from Northwest HS to Seneca Valley HS</p> <p><u>Proposed Middle School Reassignments</u> Reassign James E. Daly ES and Fox Chapel ES from Neelsville MS to Rocky Hills MS Reassign the Cabin Branch Development area south of West Old Baltimore Road and west of I-270 from Clarksburg ES and William B. Gibb ES (Except the area south of West Old Baltimore Rd, west of Route 355, north of Little Seneca Creek, and east of I-270) from Rocky Hill MS to Neelsville MS Reassign Portion of Great Seneca Creek ES from Clemente MS to Kingsview MS Reassign Spark M. Matsunaga ES Island from Kingsview MS to Martin Luther King, Jr. MS</p>
<p>Option #12 (Var. on Option 1)</p>	<p><u>Proposed High School Reassignments</u> Reassign Capt. James E. Daly ES and Fox Chapel ES from Clarksburg HS to Seneca Valley HS Reassign Germantown ES from Northwest ES to Seneca Valley HS Reassign Clopper Mill ES and Spark M. Matsunaga ES Islands from Northwest HS to Seneca Valley HS</p> <p><u>Proposed Middle School Reassignments</u> Reassign Spark M. Matsunaga ES Island from Kingsview MS to Martin Luther King, Jr. MS Reassign portion of Great Seneca Creek ES from Clemente MS to Kingsview MS</p>

Option #8 (Variation on Option 3)

Clarksburg, Northwest, and Seneca Valley Clusters Boundary Study

April 2019

Proposed High School Reassignments

Reassign Capt. James E. Daly ES and William B. Gibbs ES (Except the area south of West Old Baltimore Rd, west of Route 355, north of Little Seneca Creek, and east of I-270) from Clarksburg HS to Seneca Valley HS

Reassign Clopper Mill ES and Spark M. Matsunaga ES Islands from Northwest HS to Seneca Valley HS

Proposed Middle School Reassignments

Reassign Fox Chapel ES from Neelsville MS to Rocky Hill MS

Reassign William B. Gibbs ES (Except the area south of West Old Baltimore Rd, west of Route 355, north of Little Seneca Creek, and east of I-270) from Rocky Hill MS to Neelsville MS

Reassign portion of Great Seneca Creek ES from Clemente MS to Kingsview MS

Reassign Spark M. Matsunaga ES Island from Kingsview MS to Martin Luther King Jr. MS

Proposed Articulation Change

Neelsville MS will articulate to Seneca Valley HS

Creates split articulation for Clopper Mill ES, William B. Gibbs ES, and Spark M. Matsunaga ES

Provides straight articulation for Great Seneca Creek ES to Kingsview MS

Proposed High School Boundary Reassignments

School	Projected Number of Students					2018-19 Race/Ethnic Composition						
	2020-21	2021-22	2022-23	2023-24	2024-25	% Afr. Amer.	% Asian	% Hispanic	% White	% 2 or More	% FARMS	% ESOL
	Clarksburg HS											
Maximum Number of Seats= 2,034												
<u>No Change:</u>												
Number of Students	2,374	2,487	2,668	2,757	2,848	28.7%	20.4%	26.8%	19.6%	4.3%	27.5%	8.2%
<i>Percent of Building Occupied</i>	117%	122%	131%	136%	140%							
<i>Available Seats</i>	-340	-453	-634	-723	-814							
<u>With Change:</u>												
Number of Students	2,041	1,991	2,036	2,114	2,227	27.7%	22.8%	24.1%	21.0%	4.3%	23.7%	7.2%
<i>Percent of Building Occupied</i>	100%	98%	100%	104%	109%							
<i>Available Seats</i>	-7	43	-2	-80	-193							
Northwest HS												
Maximum Number of Seats= 2,286												
<u>No Change:</u>												
Number of Students	2,727	2,776	2,873	2,974	2,981	25.7%	21.1%	21.7%	26.9%	4.4%	22.5%	3.2%
<i>Percent of Building Occupied</i>	119%	121%	126%	130%	130%							
<i>Available Seats</i>	-441	-490	-587	-688	-695							
<u>With Change:</u>												
Number of Students	2,665	2,671	2,744	2,847	2,854	24.6%	21.4%	21.7%	27.8%	4.6%	21.6%	3.2%
<i>Percent of Building Occupied</i>	117%	117%	120%	125%	125%							
<i>Available Seats</i>	-379	-385	-458	-561	-568							
Seneca Valley HS												
Maximum Number of Seats= 2,581												
<u>No Change:</u>												
Number of Students	1,203	1,214	1,256	1,281	1,301	34.6%	10.9%	35.8%	14.5%	4.1%	39.0%	14.1%
<i>Percent of Building Occupied</i>	47%	47%	49%	50%	50%							
<i>Available Seats</i>	1,378	1,367	1,325	1,300	1,280							
<u>With Change:</u>												
Number of Students	1598	1815	2017	2051	2,049	34.4%	12.5%	34.1%	15.0%	4.0%	38.2%	12.3%
Students Reserved for CTE Programs	500	500	500	500	500							
<i>Percent of Building Occupied</i>	81%	90%	98%	99%	99%							
<i>Available Seats</i>	483	266	64	30	32							

Notes: In the 2020-2021 school year, the enrollment projections display only reassignments for students in Grades 9 and 10 to other high schools. Grade 11 and 12 students would be grandfathered at their current school assignment. For the 2021-2022 school year, the data displays Grades 9-11 reassignments with Grade 12 students grandfathered at their current school assignment.

The superintendent will make a recommendation regarding special programs for current high school students as part of his recommendation in October 2019.

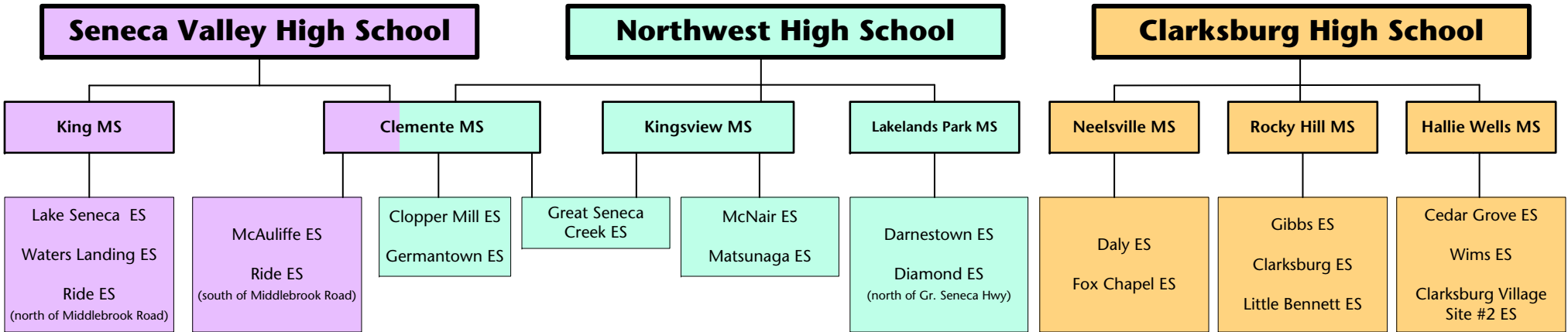
No option will provide full capacity relief for Clarksburg or Northwest high schools. It is anticipated that, capacity relief for Northwest High School will be provided in the future with the opening of Crown High School. A long-term plan for Clarksburg High School will be developed in a future CIP.

Proposed Middle School Boundary Reassignments

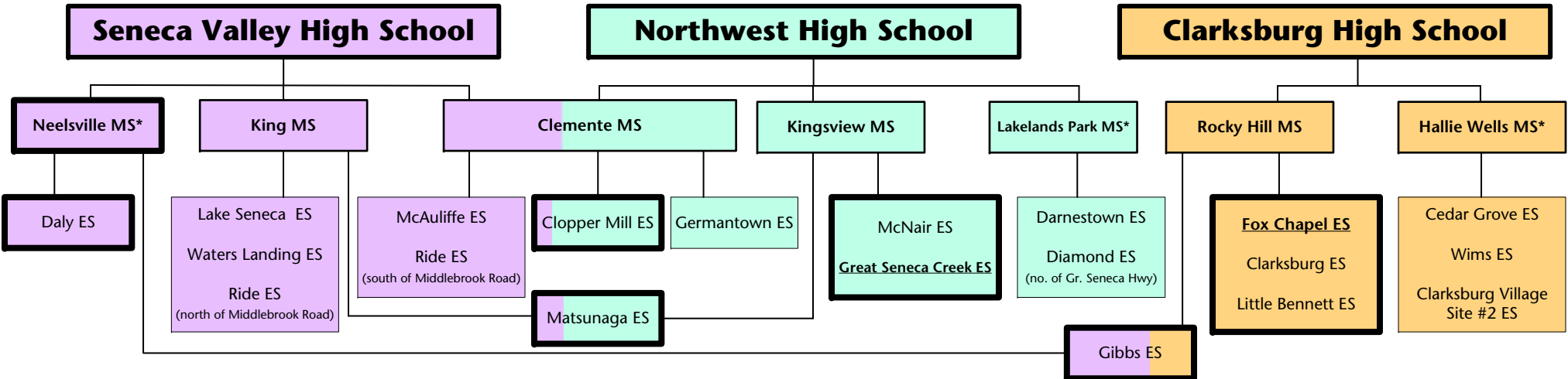
School	Projected Number of Students					2018-19 Race/Ethnic Composition						
	2020-21	2021-22	2022-23	2023-24	2024-25	% Afr. Amer.	% Asian	% Hispanic	% White	% 2 or More	% FARMS	% ESOL
	Roberto Clemente MS											
Maximum Number of Seats= 1,231												
<u>No Change:</u>												
Number of Students	1,335	1,360	1,373	1,392	1,394	26.1%	23.7%	30.7%	13.8%	5.6%	36.4%	6.1%
Percent of Building Occupied	108%	110%	112%	113%	113%							
Available Seats	-104	-129	-142	-161	-163							
<u>With Change:</u>												
Number of Students	1,204	1,166	1,196	1,220	1,229	25.5%	25.2%	29.5%	14.1%	5.8%	35.5%	5.7%
Percent of Building Occupied	98%	95%	97%	99%	100%							
Available Seats	27	65	35	11	2							
Martin Luther King, Jr. MS												
Maximum Number of Seats= 914												
<u>No Change:</u>												
Number of Students	757	793	800	798	838	37.7%	12.0%	31.9%	13.4%	4.8%	44.9%	9.9%
Percent of Building Occupied	83%	87%	88%	87%	92%							
Available Seats	157	121	114	116	76							
<u>With Change:</u>												
Number of Students	794	857	877	885	927	39.2%	12.0%	31.2%	13.0%	4.6%	45.2%	9.5%
Percent of Building Occupied	87%	94%	96%	97%	101%							
Available Seats	120	57	37	29	-13							
Kingsview MS												
Maximum Number of Seats= 1,041												
<u>No Change:</u>												
Number of Students	1,014	1,003	997	980	979	26.2%	24.5%	14.7%	28.2%	6.2%	21.3%	2.6%
Percent of Building Occupied	97%	96%	96%	94%	94%							
Available Seats	27	38	44	61	62							
<u>With Change:</u>												
Number of Students	1,108	1,133	1,097	1,065	1,055	25.2%	23.7%	18.3%	26.5%	6.2%	23.5%	3.4%
Percent of Building Occupied	106%	109%	105%	102%	101%							
Available Seats	-67	-92	-56	-24	-14							
Neelsville MS												
Maximum Number of Seats= 956												
<u>No Change:</u>												
Number of Students	933	908	917	946	957	34.3%	8.8%	49.6%	4.3%	2.5%	66.7%	18.0%
Percent of Building Occupied	98%	95%	96%	99%	100%							
Available Seats	23	48	39	10	-1							
<u>With Change:</u>												
Number of Students	930	894	914	951	973	32.0%	13.3%	42.3%	8.1%	4.2%	60.5%	16.1%
Percent of Building Occupied	97%	94%	96%	99%	102%							
Available Seats	26	62	42	5	-17							
Rocky Hill MS												
Maximum Number of Seats= 1,020												
<u>No Change:</u>												
Number of Students	799	899	946	998	1,023	24.3%	29.0%	17.9%	21.7%	6.9%	22.5%	4.5%
Percent of Building Occupied	78%	88%	93%	98%	100%							
Available Seats	221	121	74	22	-3							
<u>With Change:</u>												
Number of Students	802	913	949	993	1,007	27.0%	24.2%	26.2%	17.6%	5.0%	29.7%	6.7%
Percent of Building Occupied	79%	90%	93%	97%	99%							
Available Seats	218	107	71	27	13							

Note: In the 2020–2021 school year, the enrollment projections display reassignments for students in Grades 6 and 7 students to other middle schools while Grade 8 students are grandfathered at their current school assignment. In the 2021–2022 the data displays all Grade 6–8 students reassignments.

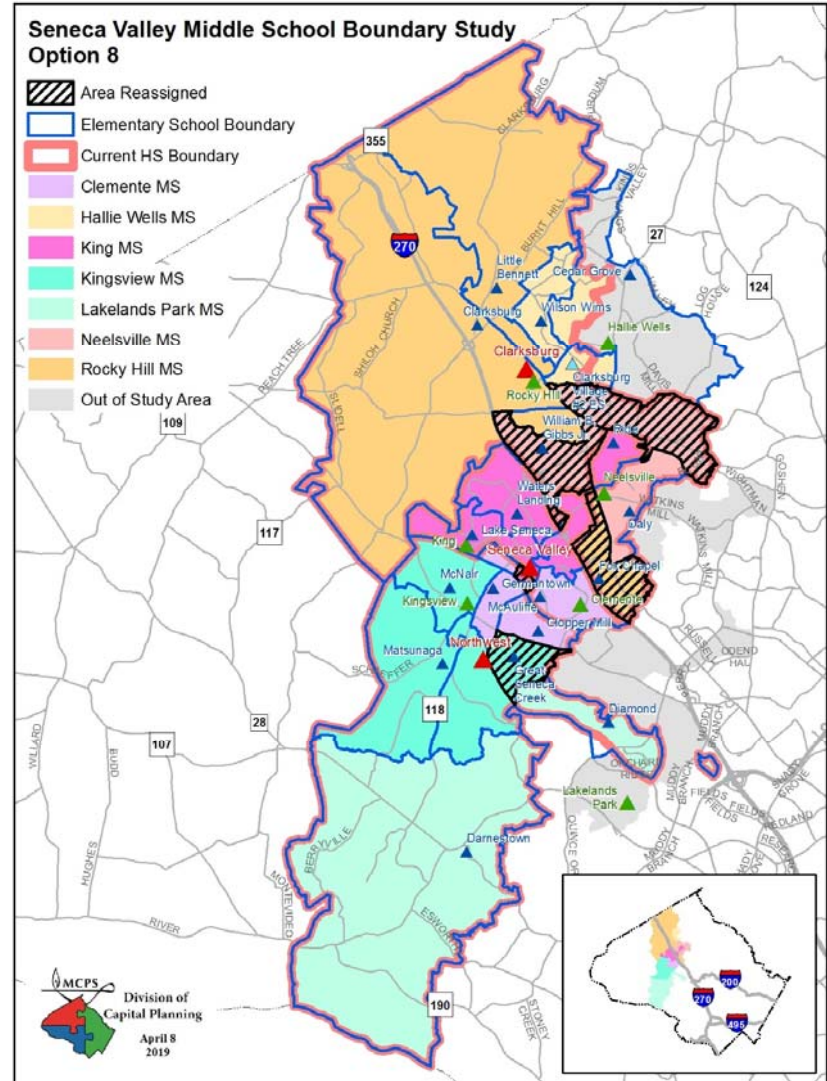
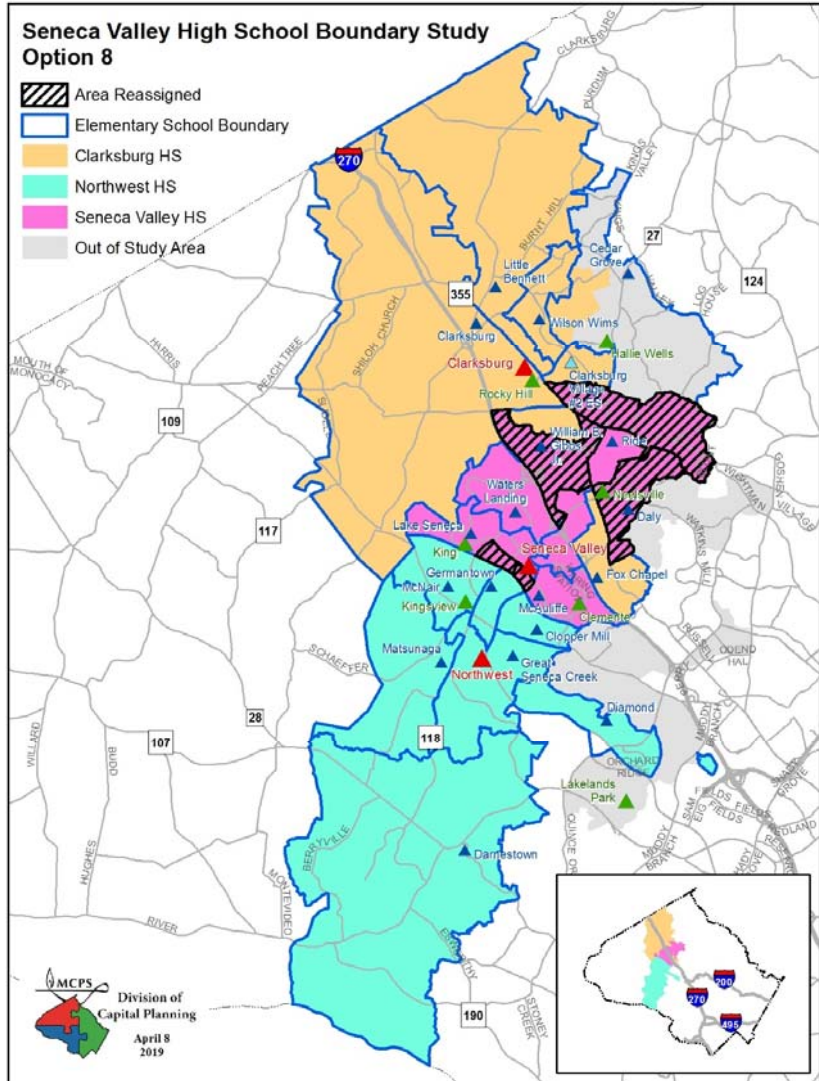
Current Boundary Articulations



Option 8



*MS that currently has an articulation to a HS outside of this boundary study



Option #9 (Variation on Option 3)

Clarksburg, Northwest, and Seneca Valley Clusters Boundary Study

April 2019

Proposed High School Reassignments

Reassign Capt. James E. Daly and William B. Gibbs ES (Except the area south of West Old Baltimore Rd, west of Route 355, north of Little Seneca Creek, and east of I-270) from Clarksburg HS to Seneca Valley HS

Reassign Germantown ES from Northwest HS to Seneca Valley HS

Reassign Clopper Mill ES and Spark M. Matsunaga ES Islands from Northwest HS to Seneca Valley HS

Proposed Middle School Reassignments

Reassign Fox Chapel ES from Neelsville MS to Rocky Hill MS

Reassign William B. Gibbs ES (Except the area south of West Old Baltimore Rd, west of Route 355, north of Little Seneca Creek, and east of I-270) from Rocky Hill MS to Neelsville MS

Reassign portion of Great Seneca Creek ES from Clemente MS to Kingsview MS

Reassign Spark M. Matsunaga ES Island from Kingsview MS to Martin Luther King, Jr.

Proposed Articulation Changes

Neelsville MS will articulate to Seneca Valley HS

Creates split articulation for Clopper Mill ES, William B. Gibbs ES, and Spark M. Matsunaga ES

Provides straight articulation for Great Seneca Creek ES to Kingsview MS.

Proposed High School Boundary Reassignments

School	Projected Number of Students					2018-19 Race/Ethnic Composition						
	2020-21	2021-22	2022-23	2023-24	2024-25	% Afr. Amer.	% Asian	% Hispanic	% White	% 2 or More	% FARMS	% ESOL
	Clarksburg HS											
Maximum Number of Seats= 2,034												
<u>No Change:</u>												
Number of Students	2,374	2,487	2,668	2,757	2,848	28.7%	20.4%	26.8%	19.6%	4.3%	27.5%	8.2%
<i>Percent of Building Occupied</i>	117%	122%	131%	136%	140%							
Available Seats	-340	-453	-634	-723	-814							
<u>With Change:</u>												
Number of Students	2,041	1,991	2,036	2,114	2,227	27.7%	22.8%	24.1%	21.0%	4.3%	23.7%	7.2%
<i>Percent of Building Occupied</i>	100%	98%	100%	104%	109%							
Available Seats	-7	43	-2	-80	-193							
Northwest HS												
Maximum Number of Seats= 2,286												
<u>No Change:</u>												
Number of Students	2,727	2,776	2,873	2,974	2,981	25.7%	21.1%	21.7%	26.9%	4.4%	22.5%	3.2%
<i>Percent of Building Occupied</i>	119%	121%	126%	130%	130%							
Available Seats	-441	-490	-587	-688	-695							
<u>With Change:</u>												
Number of Students	2,567	2,529	2,550	2,649	2,680	23.6%	21.7%	21.2%	28.9%	4.5%	21.1%	3.1%
<i>Percent of Building Occupied</i>	112%	111%	112%	116%	117%							
Available Seats	-281	-243	-264	-363	-394							
Seneca Valley HS												
Maximum Number of Seats= 2,581												
<u>No Change:</u>												
Number of Students	1,203	1,214	1,256	1,281	1,301	34.6%	10.9%	35.8%	14.5%	4.1%	39.0%	14.1%
<i>Percent of Building Occupied</i>	47%	47%	49%	50%	50%							
Available Seats	1,378	1,367	1,325	1,300	1,280							
<u>With Change:</u>												
Number of Students	1,696	1,957	2,211	2,249	2,223	34.4%	13.0%	33.4%	15.1%	4.1%	37.1%	11.5%
Students Reserved for CTE Programs	500	500	500	500	500							
<i>Percent of Building Occupied</i>	85%	95%	105%	107%	106%							
Available Seats	385	124	-130	-168	-142							

Notes: In the 2020-2021 school year, the enrollment projections display only reassignments for students in Grades 9 and 10 to other high schools. Grade 11 and 12 students would be grandfathered at their current school assignment. For the 2021-2022 school year, the data displays Grades 9-11 reassignments with Grade 12 students grandfathered at their current school assignment.

The superintendent will make a recommendation regarding special programs for current high school students as part of his recommendation in October 2019.

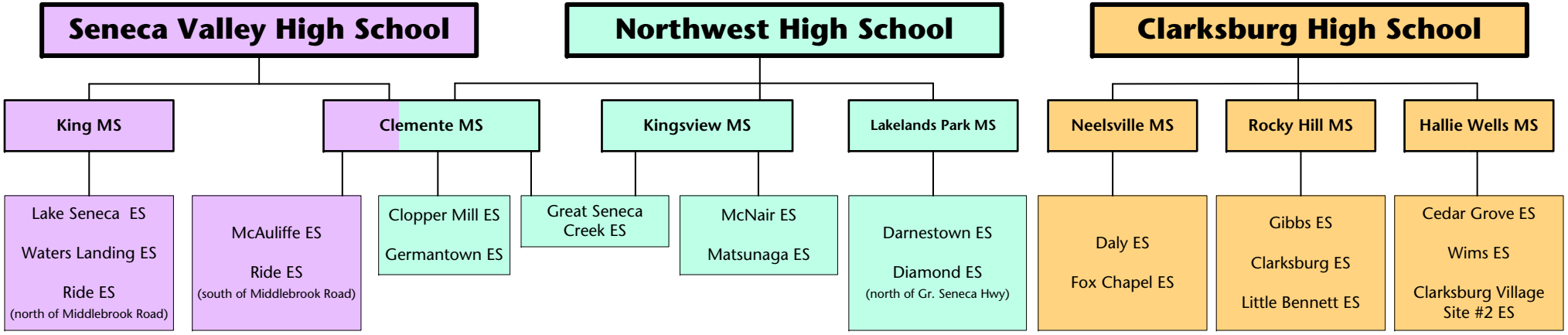
No option will provide full capacity relief for Clarksburg or Northwest high schools. It is anticipated that, capacity relief for Northwest High School will be provided in the future with the opening of Crown High School. A long-term plan for Clarksburg High School will be developed in a future CIP.

Proposed Middle School Boundary Reassignments

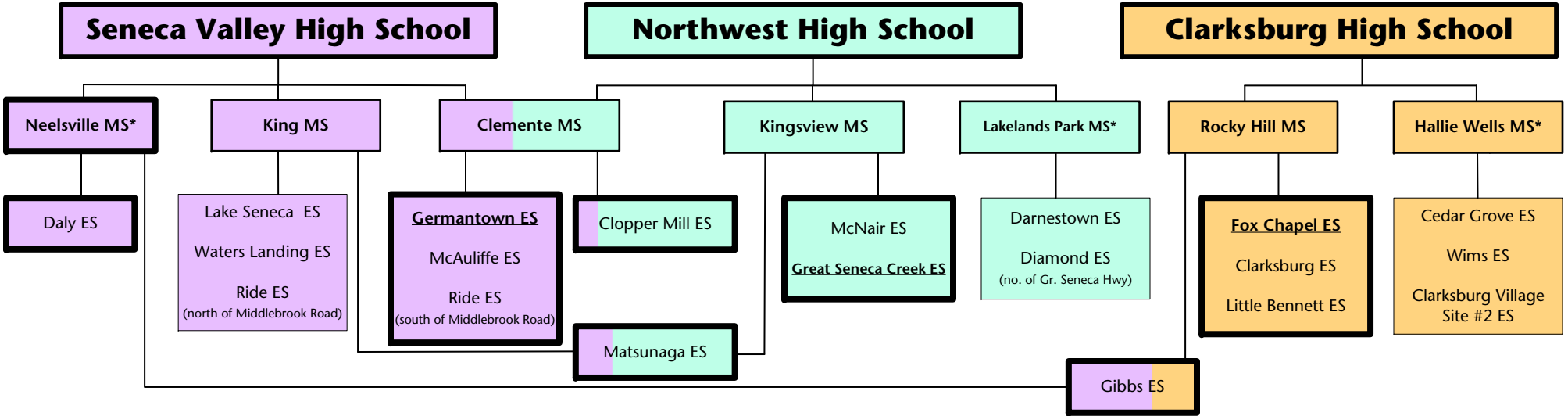
School	Projected Number of Students					2018-19 Race/Ethnic Composition						
	2020-21	2021-22	2022-23	2023-24	2024-25	% Afr. Amer.	% Asian	% Hispanic	% White	% 2 or More	% FARMS	% ESOL
	Roberto Clemente MS											
Maximum Number of Seats= 1,231												
<u>No Change:</u>												
Number of Students	1,335	1,360	1,373	1,392	1,394	26.1%	23.7%	30.7%	13.8%	5.6%	36.4%	6.1%
<i>Percent of Building Occupied</i>	108%	110%	112%	113%	113%							
<i>Available Seats</i>	-104	-129	-142	-161	-163							
<u>With Change:</u>												
Number of Students	1,204	1,166	1,196	1,220	1,229	25.5%	25.2%	29.5%	14.1%	5.8%	35.5%	5.7%
<i>Percent of Building Occupied</i>	98%	95%	97%	99%	100%							
<i>Available Seats</i>	27	65	35	11	2							
Martin Luther King, Jr. MS												
Maximum Number of Seats= 914												
<u>No Change:</u>												
Number of Students	757	793	800	798	838	37.7%	12.0%	31.9%	13.4%	4.8%	44.9%	9.9%
<i>Percent of Building Occupied</i>	83%	87%	88%	87%	92%							
<i>Available Seats</i>	157	121	114	116	76							
<u>With Change:</u>												
Number of Students	794	857	877	885	927	39.2%	12.0%	31.2%	13.0%	4.6%	45.2%	9.5%
<i>Percent of Building Occupied</i>	87%	94%	96%	97%	101%							
<i>Available Seats</i>	120	57	37	29	-13							
Kingsview MS												
Maximum Number of Seats= 1,041												
<u>No Change:</u>												
Number of Students	1,014	1,003	997	980	979	26.2%	24.5%	14.7%	28.2%	6.2%	21.3%	2.6%
<i>Percent of Building Occupied</i>	97%	96%	96%	94%	94%							
<i>Available Seats</i>	27	38	44	61	62							
<u>With Change:</u>												
Number of Students	1,108	1,133	1,097	1,065	1,055	25.2%	23.7%	18.3%	26.5%	6.2%	23.5%	3.4%
<i>Percent of Building Occupied</i>	106%	109%	105%	102%	101%							
<i>Available Seats</i>	-67	-92	-56	-24	-14							
Neelsville MS												
Maximum Number of Seats= 956												
<u>No Change:</u>												
Number of Students	933	908	917	946	957	34.3%	8.8%	49.6%	4.3%	2.5%	66.7%	18.0%
<i>Percent of Building Occupied</i>	98%	95%	96%	99%	100%							
<i>Available Seats</i>	23	48	39	10	-1							
<u>With Change:</u>												
Number of Students	930	894	914	951	973	32.0%	13.3%	42.3%	8.1%	4.2%	60.5%	16.1%
<i>Percent of Building Occupied</i>	97%	94%	96%	99%	102%							
<i>Available Seats</i>	26	62	42	5	-17							
Rocky Hill MS												
Maximum Number of Seats= 1,020												
<u>No Change:</u>												
Number of Students	799	899	946	998	1,023	24.3%	29.0%	17.9%	21.7%	6.9%	22.5%	4.5%
<i>Percent of Building Occupied</i>	78%	88%	93%	98%	100%							
<i>Available Seats</i>	221	121	74	22	-3							
<u>With Change:</u>												
Number of Students	802	913	949	993	1,007	27.0%	24.2%	26.2%	17.6%	5.0%	29.7%	6.7%
<i>Percent of Building Occupied</i>	79%	90%	93%	97%	99%							
<i>Available Seats</i>	218	107	71	27	13							

Note: In the 2020-2021 school year, the enrollment projections display reassignments for students in Grades 6 and 7 students to other middle schools while Grade 8 students are grandfathered at their current school assignment. In the 2021-2022 the data displays all Grade 6-8 students reassignments.

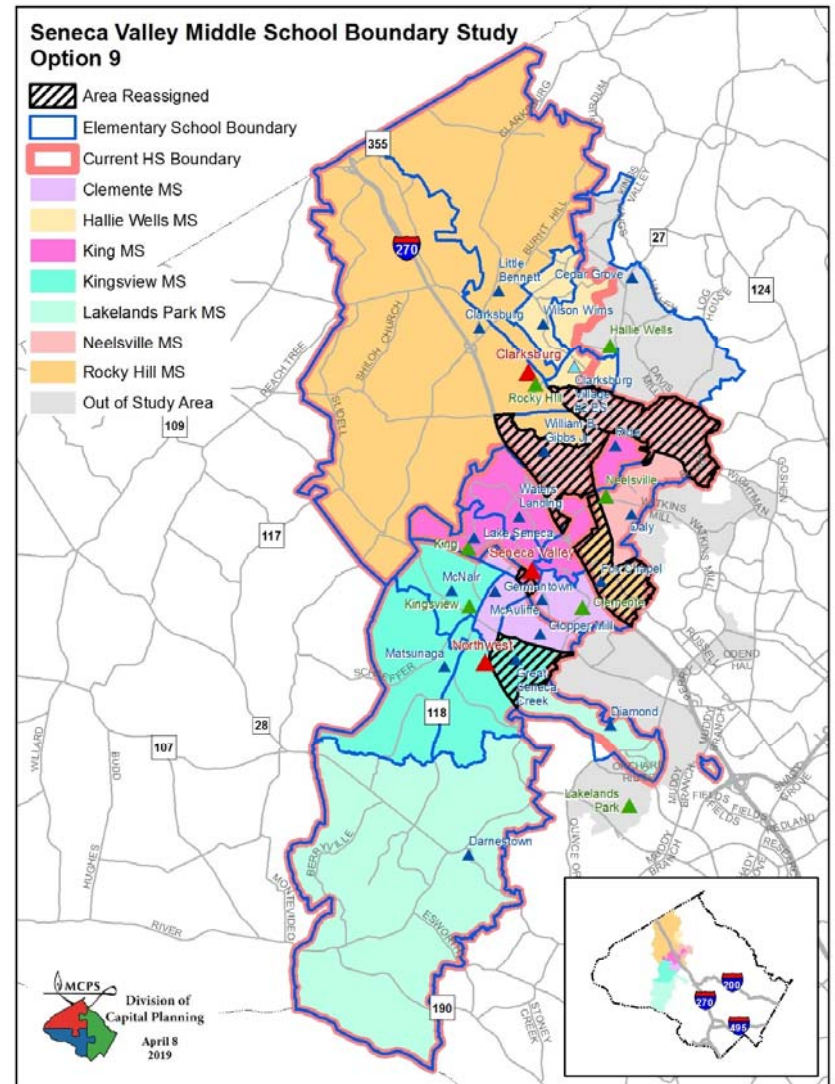
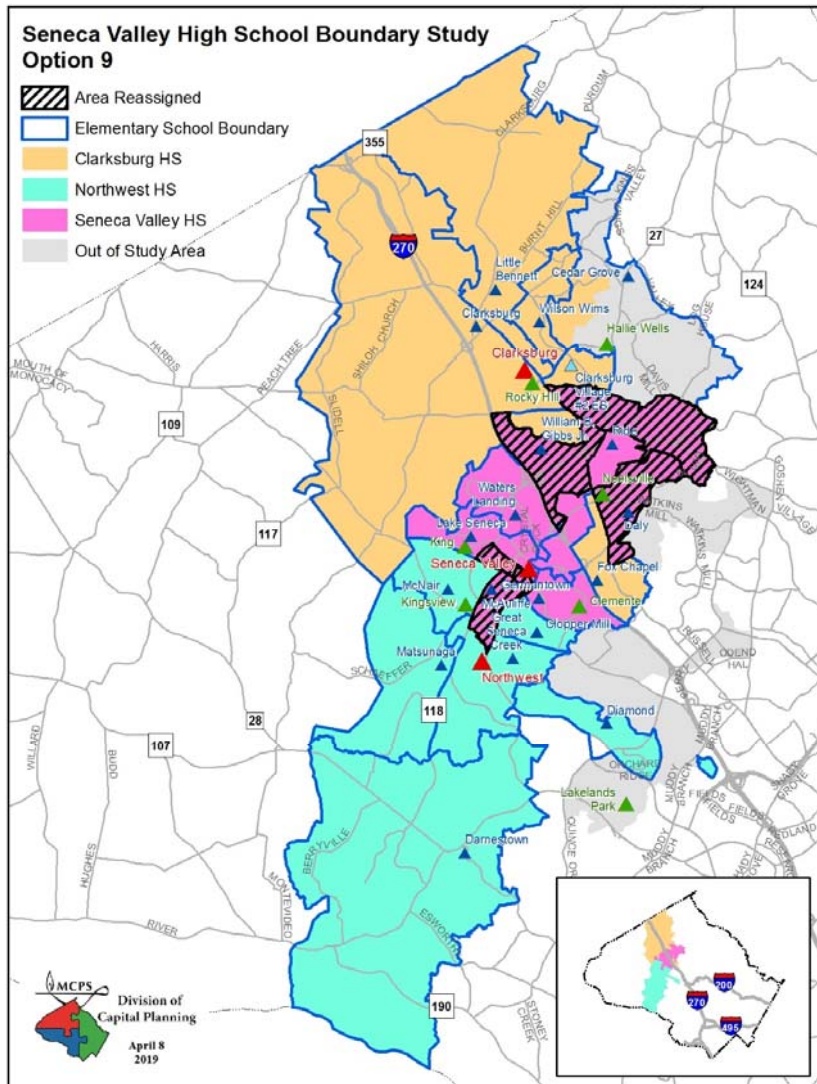
Current Boundary Articulations



Option 9



*MS that currently has an articulation to a HS outside of this boundary study



Option #10 (Variation on Option 6)

Clarksburg, Northwest, and Seneca Valley Clusters Boundary Study

April 2019

Proposed High School Reassignments

Reassign Fox Chapel ES and a portion of William B. Gibbs ES (South of Little Seneca Creek, and west of Route 355 and Brink Rd.) from Clarksburg HS to Seneca Valley HS

Reassign northern portion of Germantown ES (forested area south of Fountain Hills Dr) from Northwest HS to Seneca Valley HS

Reassign the Clopper Mill ES and Spark M. Matsunaga ES Islands from Northwest HS to Seneca Valley HS

Proposed Middle School Reassignments

Reassign Fox Chapel ES from Neelsville MS to Rocky Hill MS

Reassign portion of William B. Gibbs ES (South of West Old Baltimore Rd, west of Route 355, north of Little Seneca Creek, and east of I-270) from Rocky Hill MS to Neelsville MS

Reassign portion of Great Seneca Creek ES from Clemente MS to Kingsview MS

Reassign Spark M. Matsunaga ES Island from Kingsview MS to Martin Luther King, Jr. MS

Proposed Articulation Change

Creates split articulation for Rocky Hill MS to Clarksburg HS and Seneca Valley HS

Creates split articulation for Clopper Mill ES, Germantown ES, William B. Gibbs ES, and Spark M. Matsunaga ES

Provides straight articulation for Great Seneca Creek ES to Kingsview MS

Proposed High School Boundary Reassignments

School	Projected Number of Students					2018-19 Race/Ethnic Composition						
	2020-21	2021-22	2022-23	2023-24	2024-25	% Afr. Amer.	% Asian	% Hispanic	% White	% 2 or More	% FARMS	% ESOL
Clarksburg HS												
Maximum Number of Seats= 2,034												
<u>No Change:</u>												
Number of Students	2,374	2,487	2,668	2,757	2,848	28.7%	20.4%	26.8%	19.6%	4.3%	27.5%	8.2%
Percent of Building Occupied	117%	122%	131%	136%	140%							
Available Seats	-340	-453	-634	-723	-814							
<u>With Change:</u>												
Number of Students	2,128	2,098	2,166	2,238	2,313	27.8%	22.0%	24.3%	21.4%	4.5%	24.9%	7.8%
Percent of Building Occupied	105%	103%	106%	110%	114%							
Available Seats	-94	-64	-132	-204	-279							
Northwest HS												
Maximum Number of Seats= 2,286												
<u>No Change:</u>												
Number of Students	2,727	2,776	2,873	2,974	2,981	25.7%	21.1%	21.7%	26.9%	4.4%	22.5%	3.2%
Percent of Building Occupied	119%	121%	126%	130%	130%							
Available Seats	-441	-490	-587	-688	-695							
<u>With Change:</u>												
Number of Students	2,612	2,594	2,634	2,740	2,759	24.1%	21.6%	21.4%	28.2%	4.6%	21.6%	3.2%
Percent of Building Occupied	114%	113%	115%	120%	121%							
Available Seats	-326	-308	-348	-454	-473							
Seneca Valley HS												
Maximum Number of Seats= 2,581												
<u>No Change:</u>												
Number of Students	1,203	1,214	1,256	1,281	1,301	34.6%	10.9%	35.8%	14.5%	4.1%	39.0%	14.1%
Percent of Building Occupied	47%	47%	49%	50%	50%							
Available Seats	1,378	1,367	1,325	1,300	1,280							
<u>With Change:</u>												
Number of Students	1,564	1,785	1,997	2,034	2,058	34.8%	12.7%	34.2%	14.5%	3.9%	37.2%	11.7%
Students Reserved for CTE Programs	500	500	500	500	500							
Percent of Building Occupied	80%	89%	97%	98%	99%							
Available Seats	517	296	84	47	23							

Notes: In the 2020-2021 school year, the enrollment projections display only reassignments for students in Grades 9 and 10 to other high schools. Grade 11 and 12 students would be grandfathered at their current school assignment. For the 2021-2022 school year, the data displays Grades 9-11 reassignments with Grade 12 students grandfathered at their current school assignment. The Board of Education will make a decision on the grandfathering in November 2019.

The superintendent will make a recommendation regarding special programs for current high school students as part of his recommendation in October 2019.

No option will provide full capacity relief for Clarksburg or Northwest high schools. It is anticipated that, capacity relief for Northwest High School will be provided in the future with the opening of Crown High School. A long-term plan for Clarksburg High School will be developed in a future CIP.

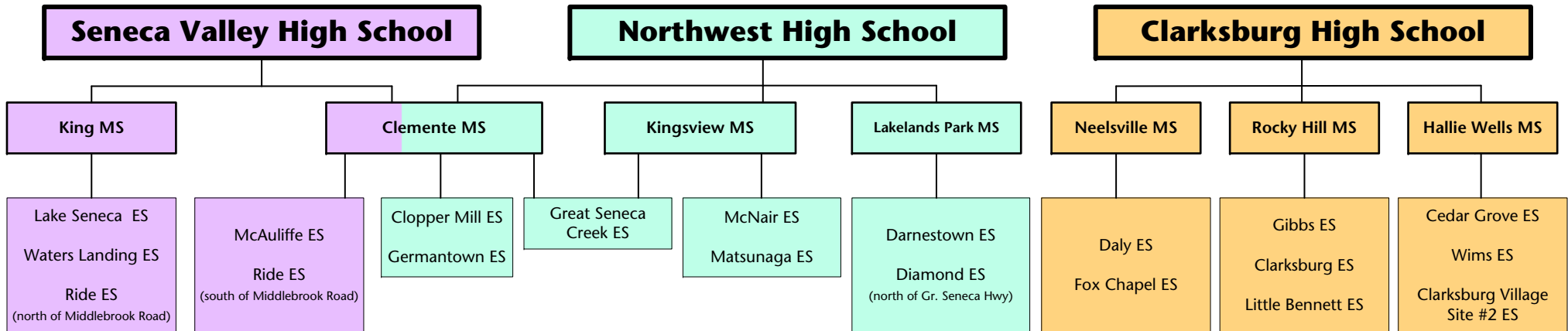
Proposed Middle School Boundary Reassignments

School	Projected Number of Students					2018-19							
	2020-21	2021-22	2022-23	2023-24	2024-25	Race/Ethnic Composition						% FARMs	% ESOL
						% Afr. Amer.	% Asian	% Hispanic	% White	% 2 or More			
Roberto Clemente MS													
Maximum Number of Seats= 1,231													
<u>No Change:</u>													
Number of Students	1,335	1,360	1,373	1,392	1,394	26.1%	23.7%	30.7%	13.8%	5.6%	36.4%	6.1%	
Percent of Building Occupied	108%	110%	112%	113%	113%								
Available Seats	-104	-129	-142	-161	-163								
<u>With Change:</u>													
Number of Students	1,204	1,166	1,196	1,220	1,229	25.5%	25.2%	29.5%	14.1%	5.8%	35.5%	5.7%	
Percent of Building Occupied	98%	95%	97%	99%	100%								
Available Seats	27	65	35	11	2								
Martin Luther King, Jr. MS													
Maximum Number of Seats= 914													
<u>No Change:</u>													
Number of Students	757	793	800	798	838	37.7%	12.0%	31.9%	13.4%	4.8%	44.9%	9.9%	
Percent of Building Occupied	83%	87%	88%	87%	92%								
Available Seats	157	121	114	116	76								
<u>With Change:</u>													
Number of Students	794	857	877	885	927	39.2%	12.0%	31.2%	13.0%	4.6%	45.2%	9.5%	
Percent of Building Occupied	87%	94%	96%	97%	101%								
Available Seats	120	57	37	29	-13								
Kingsview MS													
Maximum Number of Seats= 1,041													
<u>No Change:</u>													
Number of Students	1,014	1,003	997	980	979	26.2%	24.5%	14.7%	28.2%	6.2%	21.3%	2.6%	
Percent of Building Occupied	97%	96%	96%	94%	94%								
Available Seats	27	38	44	61	62								
<u>With Change:</u>													
Number of Students	1,108	1,133	1,097	1,065	1,055	25.2%	23.7%	18.3%	26.5%	6.2%	23.5%	3.4%	
Percent of Building Occupied	106%	109%	105%	102%	101%								
Available Seats	-67	-92	-56	-24	-14								
Neelsville MS													
Maximum Number of Seats= 956													
<u>No Change:</u>													
Number of Students	933	908	917	946	957	34.3%	8.8%	49.6%	4.3%	2.5%	66.7%	18.0%	
Percent of Building Occupied	98%	95%	96%	99%	100%								
Available Seats	23	48	39	10	-1								
<u>With Change:</u>													
Number of Students	828	734	736	762	780	34.2%	10.2%	47.6%	5.2%	2.8%	68.0%	18.4%	
Percent of Building Occupied	87%	77%	77%	80%	82%								
Available Seats	128	222	220	194	176								
Rocky Hill MS													
Maximum Number of Seats= 1,020													
<u>No Change:</u>													
Number of Students	799	899	946	998	1,023	24.3%	29.0%	17.9%	21.7%	6.9%	22.5%	4.5%	
Percent of Building Occupied	78%	88%	93%	98%	100%								
Available Seats	221	121	74	22	-3								
<u>With Change:</u>													
Number of Students	904	1,073	1,127	1,182	1,200	26.4%	24.4%	25.3%	18.0%	5.9%	30.0%	6.8%	
Percent of Building Occupied	89%	105%	110%	116%	118%								
Available Seats	116	-53	-107	-162	-180								

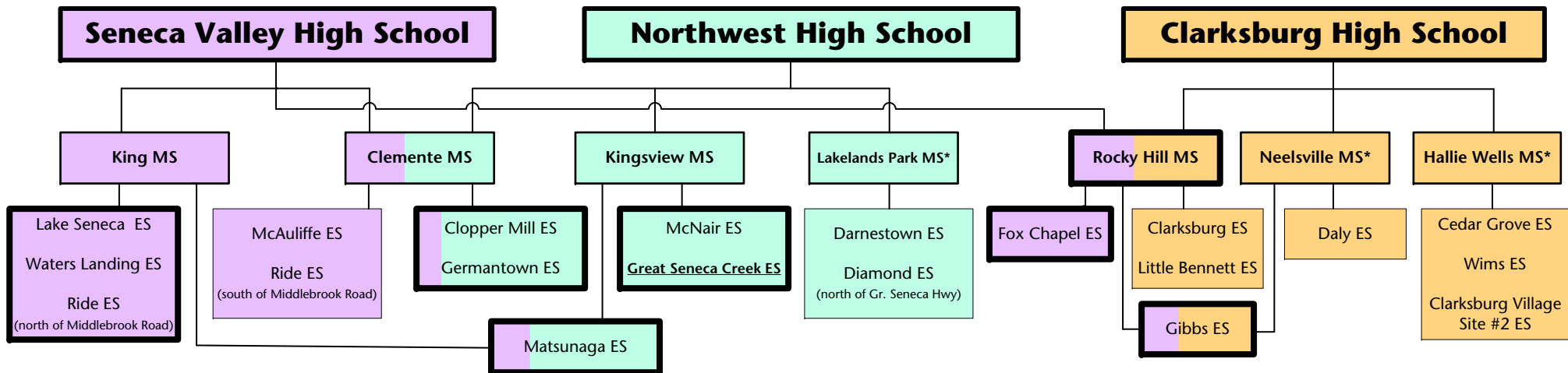
Note: In the 2020-2021 school year, the enrollment projections display reassignments for students in Grades 6 and 7 to other middle schools while Grade 8 students are grandfathered at their current school assignment. In the 2021-2022 the data displays all Grade 6-8 students reassignments. The Board of Education will make a decision on the grandfathering in November 2019.

A capital project is planned for Neelsville Middle School that will address various building systems and programmatic needs for this school. A scope for the project will be determine during this school year with a completion date to be determined in a future Capital Improvements Program.

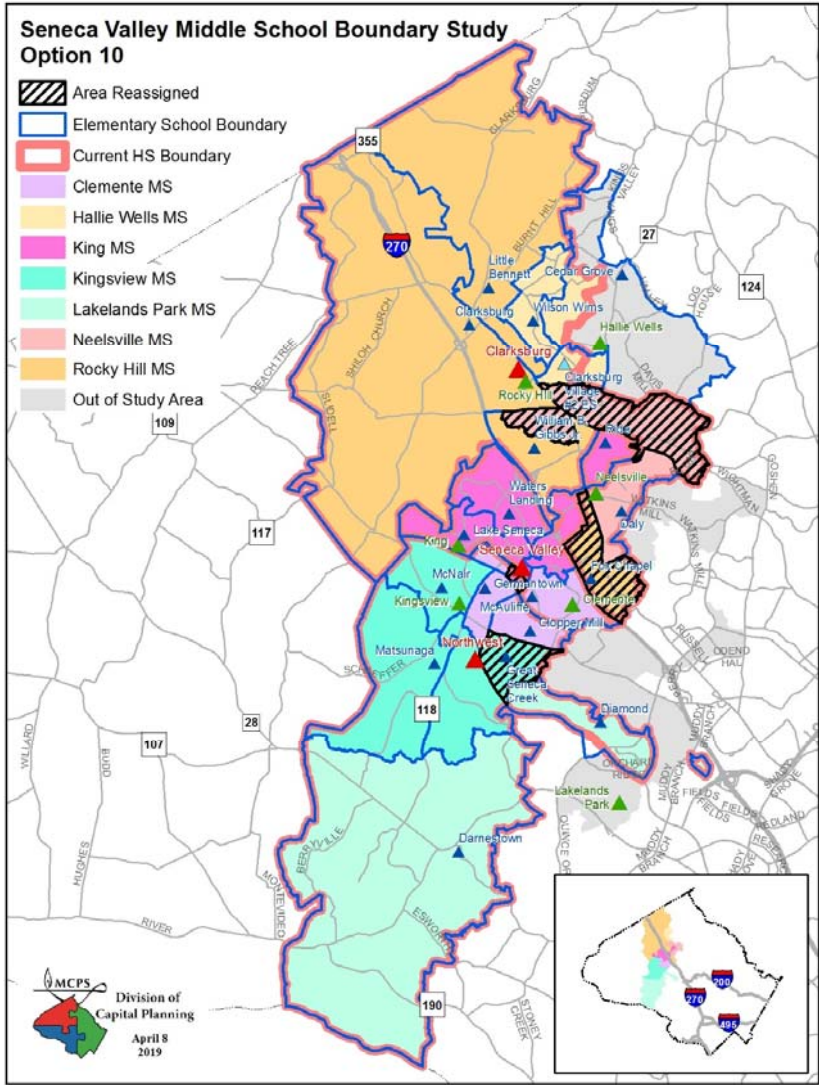
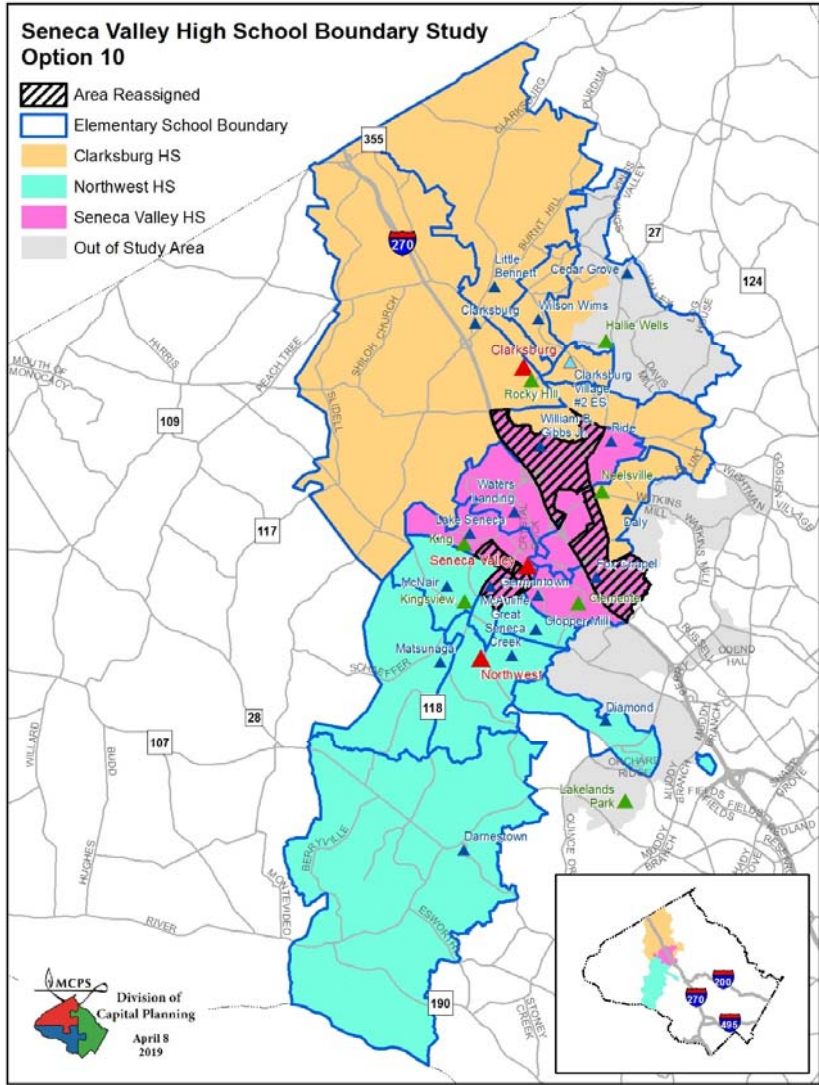
Current Boundary Articulations



Option 10



*MS that currently has an articulation to a HS outside of this boundary study



Option #11

Clarksburg, Northwest, and Seneca Valley Clusters Boundary Study

April 2019

Proposed High School Reassignments

Reassign the Cabin Branch Development and the area south of West Old Baltimore Road and west of I-270 from Clarksburg ES and William B. Gibbs ES (Except the area south of West Old Baltimore Rd, west of Route 355, north of Little Seneca Creek, and east of I-270) from Clarksburg HS to Seneca Valley HS

Reassign the Clopper Mill ES and Spark M. Matsunaga ES islands from Northwest HS to Seneca Valley HS

Proposed Middle School Reassignments

Reassign Capt. James E. Daly ES and Fox Chapel ES from Neelsville MS to Rocky Hill MS

Reassign Cabin Branch Development and the area south of West Old Baltimore Road and west of I-270 from Clarksburg ES and William B. Gibbs ES (Except the area south of West Old Baltimore Rd, west of Route 355, north of Little Seneca Creek, and east of I-270) from Rocky Hill MS to Neelsville MS

Reassign portion of Great Seneca Creek ES from Clemente MS to Kingsview MS

Reassign Spark M. Matsunaga ES Island from Kingsview MS to Martin Luther King, Jr. MS

Proposed Articulation Changes

Neelsville MS will articulate to Seneca Valley HS

Creates split articulation for Clarksburg ES, Clopper Mill ES, William B. Gibbs ES, and Spark M. Matsunaga ES

Provides straight articulation for Great Seneca Creek ES to Kingsview MS

Proposed High School Boundary Reassignments

School	Projected Number of Students					2018-19 Race/Ethnic Composition						
	2020-21	2021-22	2022-23	2023-24	2024-25	% Afr. Amer.	% Asian	% Hispanic	% White	% 2 or More	% FARMS	% ESOL
	Clarksburg HS											
Maximum Number of Seats= 2,034												
<u>No Change:</u>												
Number of Students	2,374	2,487	2,668	2,757	2,848	28.7%	20.4%	26.8%	19.6%	4.3%	27.5%	8.2%
Percent of Building Occupied	117%	122%	131%	136%	140%							
Available Seats	-340	-453	-634	-723	-814							
<u>With Change:</u>												
Number of Students	2,154	2,124	2,150	2,243	2,296	28.5%	20.2%	29.0%	17.9%	4.4%	28.5%	9.4%
Percent of Building Occupied	106%	104%	106%	110%	113%							
Available Seats	-120	-90	-116	-209	-262							
Northwest HS												
Maximum Number of Seats= 2,286												
<u>No Change:</u>												
Number of Students	2,727	2,776	2,873	2,974	2,981	25.7%	21.1%	21.7%	26.9%	4.4%	22.5%	3.2%
Percent of Building Occupied	119%	121%	126%	130%	130%							
Available Seats	-441	-490	-587	-688	-695							
<u>With Change:</u>												
Number of Students	2,665	2,671	2,744	2,847	2,854	24.6%	21.4%	21.7%	27.8%	4.6%	21.6%	3.2%
Percent of Building Occupied	117%	117%	120%	125%	125%							
Available Seats	-379	-385	-458	-561	-568							
Seneca Valley HS												
Maximum Number of Seats= 2,581												
<u>No Change:</u>												
Number of Students	1,203	1,214	1,256	1,281	1,301	34.6%	10.9%	35.8%	14.5%	4.1%	39.0%	14.1%
Percent of Building Occupied	47%	47%	49%	50%	50%							
Available Seats	1,378	1,367	1,325	1,300	1,280							
<u>With Change:</u>												
Number of Students	1,485	1,682	1,903	1,922	1,980	34.6%	13.7%	30.4%	17.5%	3.9%	35.4%	10.7%
Students Reserved for CTE Programs	500	500	500	500	500							
Percent of Building Occupied	77%	85%	93%	94%	96%							
Available Seats	596	399	178	159	101							

Notes: In the 2020-2021 school year, the enrollment projections display only reassignments for students in Grades 9 and 10 to other high schools. Grade 11 and 12 students would be grandfathered at their current school assignment. For the 2021-2022 school year, the data displays Grades 9-11 reassignments with Grade 12 students grandfathered at their current school assignment.

The superintendent will make a recommendation regarding special programs for current high school students as part of his recommendation in October 2019.

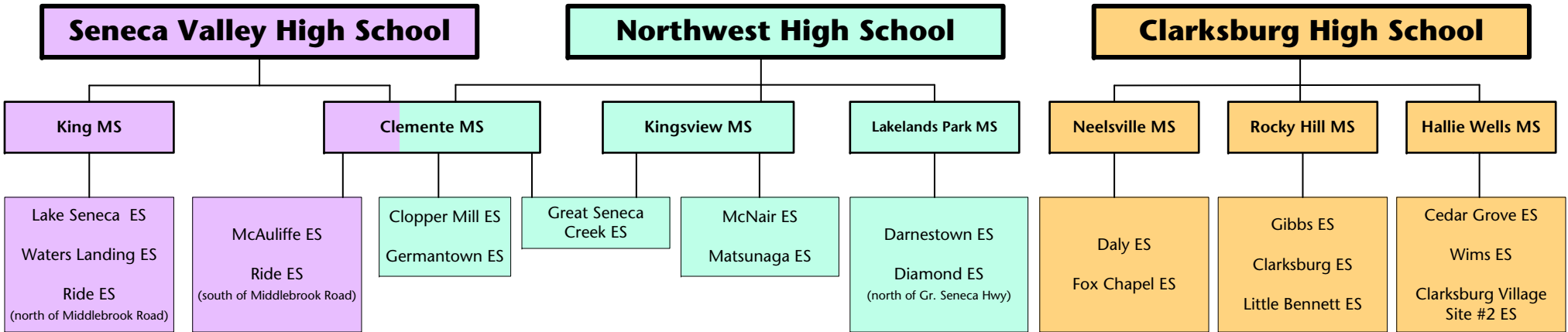
No option will provide full capacity relief for Clarksburg or Northwest high schools. It is anticipated that, capacity relief for Northwest High School will be provided in the future with the opening of Crown High School. A long-term plan for Clarksburg High School will be developed in a future CIP.

Proposed Middle School Boundary Reassignments

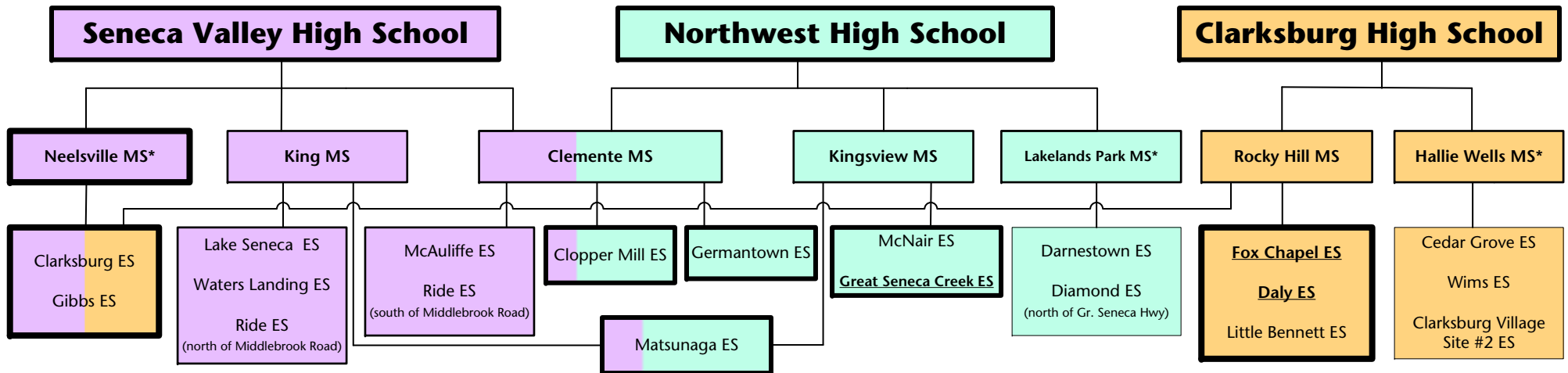
School	Projected Number of Students					2018-19 Race/Ethnic Composition						
	2020-21	2021-22	2022-23	2023-24	2024-25	% Afr. Amer.	% Asian	% Hispanic	% White	% 2 or More	% FARMS	% ESOL
	Roberto Clemente MS											
Maximum Number of Seats= 1,231												
No Change:												
Number of Students	1,335	1,360	1,373	1,392	1,394	26.1%	23.7%	30.7%	13.8%	5.6%	36.4%	6.1%
Percent of Building Occupied	108%	110%	112%	113%	113%							
Available Seats	-104	-129	-142	-161	-163							
With Change:												
Number of Students	1,204	1,166	1,196	1,220	1,229	25.5%	25.2%	29.5%	14.1%	5.8%	35.5%	5.7%
Percent of Building Occupied	98%	95%	97%	99%	100%							
Available Seats	27	65	35	11	2							
Martin Luther King, Jr. MS												
Maximum Number of Seats= 914												
No Change:												
Number of Students	757	793	800	798	838	37.7%	12.0%	31.9%	13.4%	4.8%	44.9%	9.9%
Percent of Building Occupied	83%	87%	88%	87%	92%							
Available Seats	157	121	114	116	76							
With Change:												
Number of Students	794	857	877	885	927	39.2%	12.0%	31.2%	13.0%	4.6%	45.2%	9.5%
Percent of Building Occupied	87%	94%	96%	97%	101%							
Available Seats	120	57	37	29	-13							
Kingsview MS												
Maximum Number of Seats= 1,041												
No Change:												
Number of Students	1,014	1,003	997	980	979	26.2%	24.5%	14.7%	28.2%	6.2%	21.3%	2.6%
Percent of Building Occupied	97%	96%	96%	94%	94%							
Available Seats	27	38	44	61	62							
With Change:												
Number of Students	1,108	1,133	1,097	1,065	1,055	25.2%	23.7%	18.3%	26.5%	6.2%	23.5%	3.4%
Percent of Building Occupied	106%	109%	105%	102%	101%							
Available Seats	-67	-92	-56	-24	-14							
Neelsville MS												
Maximum Number of Seats= 956												
No Change:												
Number of Students	933	908	917	946	957	34.3%	8.8%	49.6%	4.3%	2.5%	66.7%	18.0%
Percent of Building Occupied	98%	95%	96%	99%	100%							
Available Seats	23	48	39	10	-1							
With Change:												
Number of Students	854	795	869	928	976	26.2%	17.3%	41.6%	10.3%	4.6%	53.9%	16.9%
Percent of Building Occupied	89%	83%	91%	97%	102%							
Available Seats	102	161	87	28	-20							
Rocky Hill MS												
Maximum Number of Seats= 1,020												
No Change:												
Number of Students	799	899	946	998	1,023	24.3%	29.0%	17.9%	21.7%	6.9%	22.5%	4.5%
Percent of Building Occupied	78%	88%	93%	98%	100%							
Available Seats	221	121	74	22	-3							
With Change:												
Number of Students	878	1,012	994	1,016	1,004	32.3%	19.3%	29.6%	14.2%	4.6%	40.1%	7.8%
Percent of Building Occupied	86%	99%	97%	100%	98%							
Available Seats	142	8	26	4	16							

Note: In the 2020-2021 school year, the enrollment projections display reassignments for students in Grades 6 and 7 students to other middle schools while Grade 8 students are grandfathered at their current school assignment. In the 2021-2022 the data displays all Grade 6-8 students reassignments.

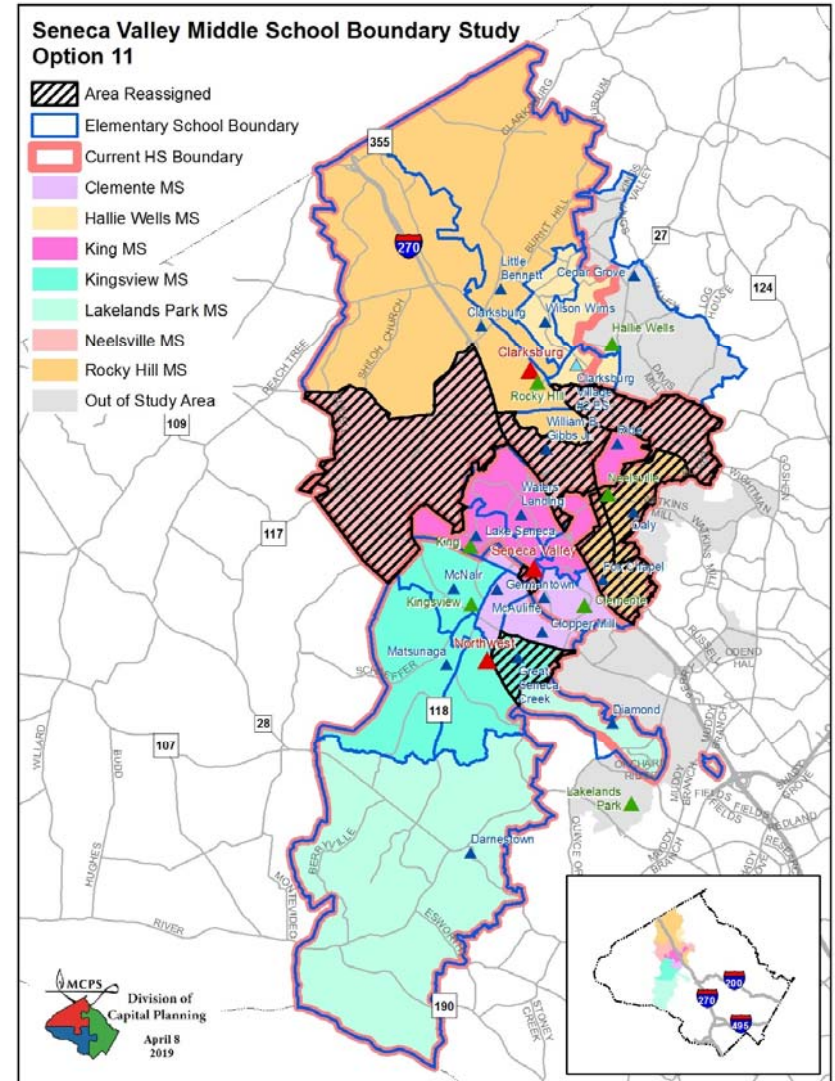
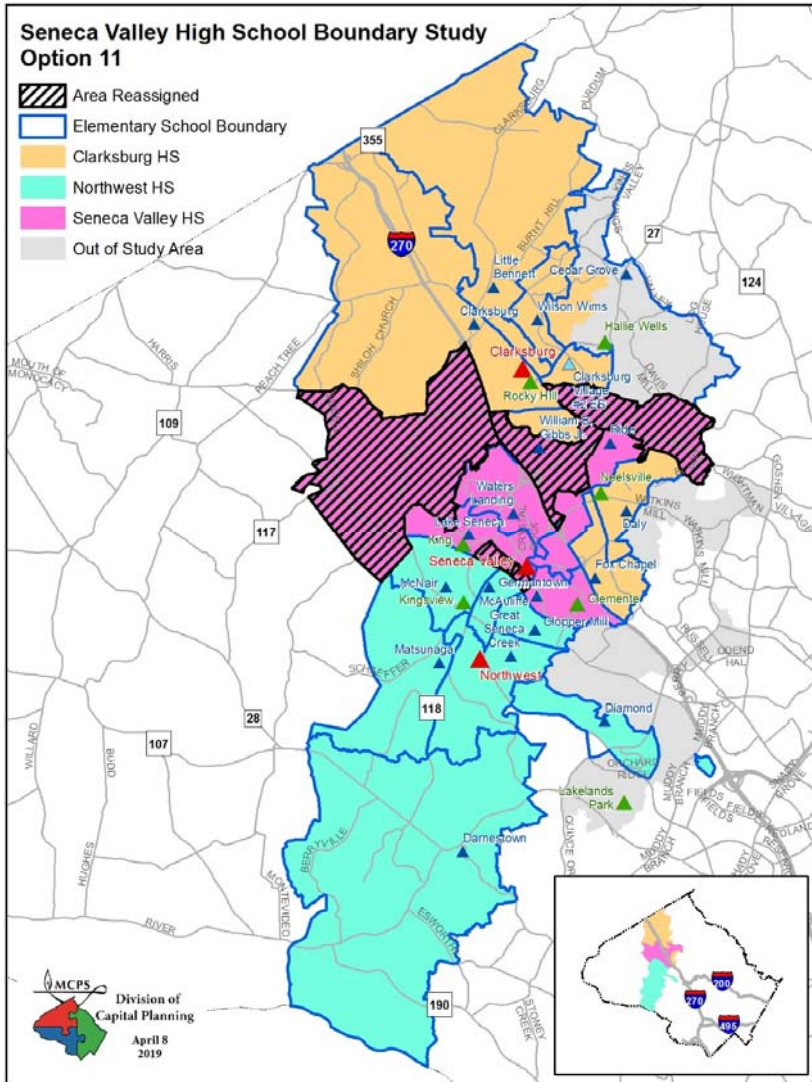
Current Boundary Articulations



Option 11



*MS that currently has an articulation to a HS outside of this boundary study



Option #11a

Clarksburg, Northwest, and Seneca Valley Clusters Boundary Study

April 2019

Proposed HS Reassignments

Reassign the Cabin Branch Development and area south of West Old Baltimore Road and west of I-270 from Clarksburg ES and William B. Gibb ES (Except the area south of West Old Baltimore Rd, west of Route 355, north of Little Seneca Creek, and east of I-270) from Clarksburg HS to Seneca Valley HS

Reassign Clopper Mill ES and Spark M. Matsunaga ES Islands from Northwest HS to Seneca Valley HS

Reassign Germantown ES from Northwest HS to Seneca Valley HS

Proposed MS Reassignments

Reassign James E. Daly ES and Fox Chapel ES from Neelsville MS to Rocky Hills MS

Reassign the Cabin Branch Development area south of West Old Baltimore Road and west of I-270 from Clarksburg ES and William B. Gibb ES (Except the area south of West Old Baltimore Rd, west of Route 355, north of Little Seneca Creek, and east of I-270) from Rocky Hill MS to Neelsville MS

Reassign Portion of Great Seneca Creek ES from Clemente MS to Kingsview MS

Reassign Spark M. Matsunaga ES Island from Kingsview MS to Martin Luther King, Jr. MS

Proposed Articulation Changes

Neelsville MS will articulate to Seneca Valley HS

Creates split articulation for Clarksburg ES, Clopper Mill ES, William B. Gibbs ES, and Spark M. Matsunaga ES

Provides straight articulation for Great Seneca Creek ES to Kingsview MS

Proposed High School Boundary Reassignments

School	Projected Number of Students					2018-19 Race/Ethnic Composition						
	2020-21	2021-22	2022-23	2023-24	2024-25	% Afr. Amer.	% Asian	% Hispanic	% White	% 2 or More	% FARMS	% ESOL
	Clarksburg HS											
Maximum Number of Seats= 2,034												
No Change:												
Number of Students	2,374	2,487	2,668	2,757	2,848	28.7%	20.4%	26.8%	19.6%	4.3%	27.5%	8.2%
Percent of Building Occupied	117%	122%	131%	136%	140%							
Available Seats	-340	-453	-634	-723	-814							
With Change:												
Number of Students	2,154	2,124	2,150	2,243	2,296	28.5%	20.2%	29.0%	17.9%	4.4%	28.5%	9.4%
Percent of Building Occupied	106%	104%	106%	110%	113%							
Available Seats	-120	-90	-116	-209	-262							
Northwest HS												
Maximum Number of Seats= 2,286												
No Change:												
Number of Students	2,727	2,776	2,873	2,974	2,981	25.7%	21.1%	21.7%	26.9%	4.4%	22.5%	3.2%
Percent of Building Occupied	119%	121%	126%	130%	130%							
Available Seats	-441	-490	-587	-688	-695							
With Change:												
Number of Students	2,567	2,529	2,550	2,649	2,680	23.6%	21.7%	21.2%	28.9%	4.5%	21.1%	3.1%
Percent of Building Occupied	112%	111%	112%	116%	117%							
Available Seats	-281	-243	-264	-363	-394							
Seneca Valley HS												
Maximum Number of Seats= 2,581												
No Change:												
Number of Students	1,203	1,214	1,256	1,281	1,301	34.6%	10.9%	35.8%	14.5%	4.1%	39.0%	14.1%
Percent of Building Occupied	47%	47%	49%	50%	50%							
Available Seats	1,378	1,367	1,325	1,300	1,280							
With Change:												
Number of Students	1,583	1,824	2,097	2,120	2,154	34.6%	14.1%	30.0%	17.2%	4.0%	34.4%	10.0%
Students Reserved for CTE Programs	500	500	500	500	500							
Percent of Building Occupied	81%	90%	101%	102%	103%							
Available Seats	498	257	-16	-39	-73							

Notes: In the 2020-2021 school year, the enrollment projections display only reassignments for students in Grades 9 and 10 to other high schools. Grade 11 and 12 students would be grandfathered at their current school assignment. For the 2021-2022 school year, the data displays Grades 9-11 reassignments with Grade 12 students grandfathered at their current school assignment.

The superintendent will make a recommendation regarding special programs for current high school students as part of his recommendation in October 2019.

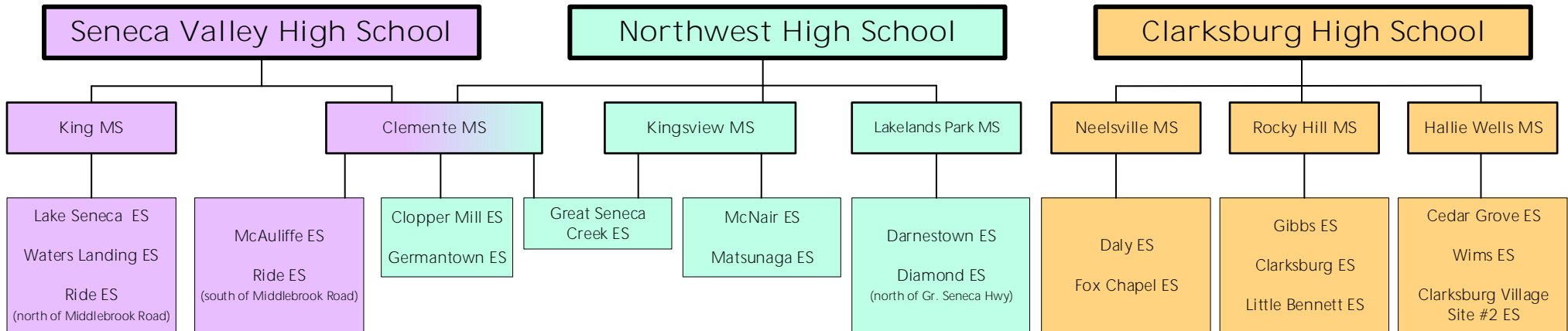
No option will provide full capacity relief for Clarksburg or Northwest high schools. It is anticipated that, capacity relief for Northwest High School will be provided in the future with the opening of Crown High School. A long-term plan for Clarksburg High School will be developed in a future CIP.

Proposed Middle School Boundary Reassignments

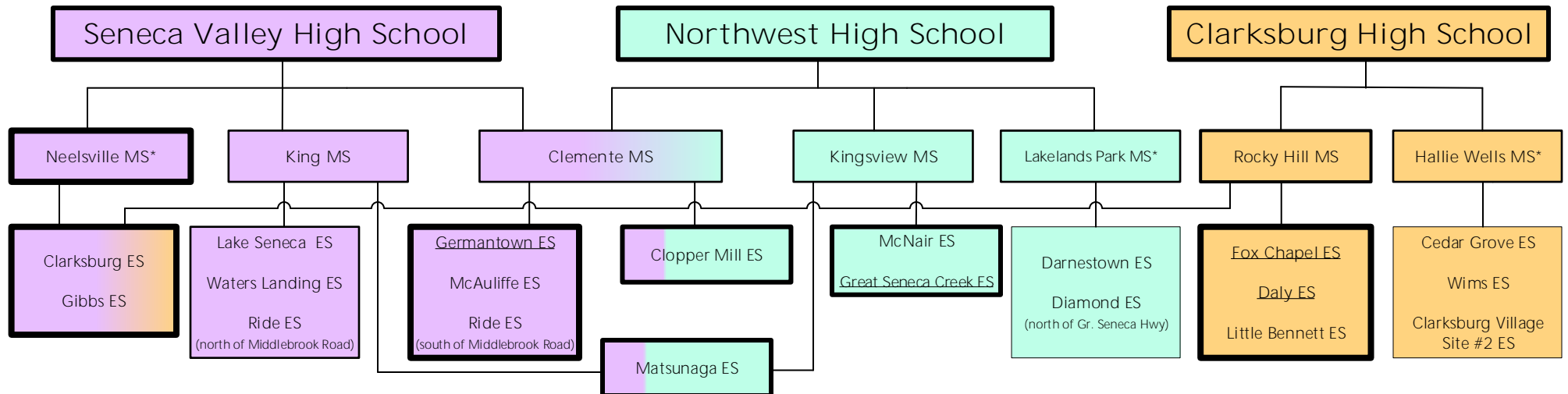
School	Projected Number of Students					2018-19 Race/Ethnic Composition						
	2020-21	2021-22	2022-23	2023-24	2024-25	% Afr. Amer.	% Asian	% Hispanic	% White	% 2 or More	% FARMS	% ESOL
	Roberto Clemente MS											
Maximum Number of Seats= 1,231												
<u>No Change:</u>												
Number of Students	1,335	1,360	1,373	1,392	1,394	26.1%	23.7%	30.7%	13.8%	5.6%	36.4%	6.1%
Percent of Building Occupied	108%	110%	112%	113%	113%							
Available Seats	-104	-129	-142	-161	-163							
<u>With Change:</u>												
Number of Students	1,204	1,166	1,196	1,220	1,229	25.5%	25.2%	29.5%	14.1%	5.8%	35.5%	5.7%
Percent of Building Occupied	98%	95%	97%	99%	100%							
Available Seats	27	65	35	11	2							
Martin Luther King, Jr. MS												
Maximum Number of Seats= 914												
<u>No Change:</u>												
Number of Students	757	793	800	798	838	37.7%	12.0%	31.9%	13.4%	4.8%	44.9%	9.9%
Percent of Building Occupied	83%	87%	88%	87%	92%							
Available Seats	157	121	114	116	76							
<u>With Change:</u>												
Number of Students	794	857	877	885	927	39.2%	12.0%	31.2%	13.0%	4.6%	45.2%	9.5%
Percent of Building Occupied	87%	94%	96%	97%	101%							
Available Seats	120	57	37	29	-13							
Kingsview MS												
Maximum Number of Seats= 1,041												
<u>No Change:</u>												
Number of Students	1,014	1,003	997	980	979	26.2%	24.5%	14.7%	28.2%	6.2%	21.3%	2.6%
Percent of Building Occupied	97%	96%	96%	94%	94%							
Available Seats	27	38	44	61	62							
<u>With Change:</u>												
Number of Students	1,108	1,133	1,097	1,065	1,055	25.2%	23.7%	18.3%	26.5%	6.2%	23.5%	3.4%
Percent of Building Occupied	106%	109%	105%	102%	101%							
Available Seats	-67	-92	-56	-24	-14							
Neelsville MS												
Maximum Number of Seats= 956												
<u>No Change:</u>												
Number of Students	933	908	917	946	957	34.3%	8.8%	49.6%	4.3%	2.5%	66.7%	18.0%
Percent of Building Occupied	98%	95%	96%	99%	100%							
Available Seats	23	48	39	10	-1							
<u>With Change:</u>												
Number of Students	854	795	869	928	976	26.2%	17.3%	41.6%	10.3%	4.6%	53.9%	16.9%
Percent of Building Occupied	89%	83%	91%	97%	102%							
Available Seats	102	161	87	28	-20							
Rocky Hill MS												
Maximum Number of Seats= 1,020												
<u>No Change:</u>												
Number of Students	799	899	946	998	1,023	24.3%	29.0%	17.9%	21.7%	6.9%	22.5%	4.5%
Percent of Building Occupied	78%	88%	93%	98%	100%							
Available Seats	221	121	74	22	-3							
<u>With Change:</u>												
Number of Students	878	1,012	994	1,016	1,004	32.3%	19.3%	29.6%	14.2%	4.6%	40.1%	7.8%
Percent of Building Occupied	86%	99%	97%	100%	98%							
Available Seats	142	8	26	4	16							

Note: In the 2020-2021 school year, the enrollment projections display reassignments for students in Grades 6 and 7 students to other middle schools while Grade 8 students are grandfathered at their current school assignment. In the 2021-2022 the data displays all Grade 6-8 students reassignments.

Current Boundary Articulations





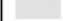


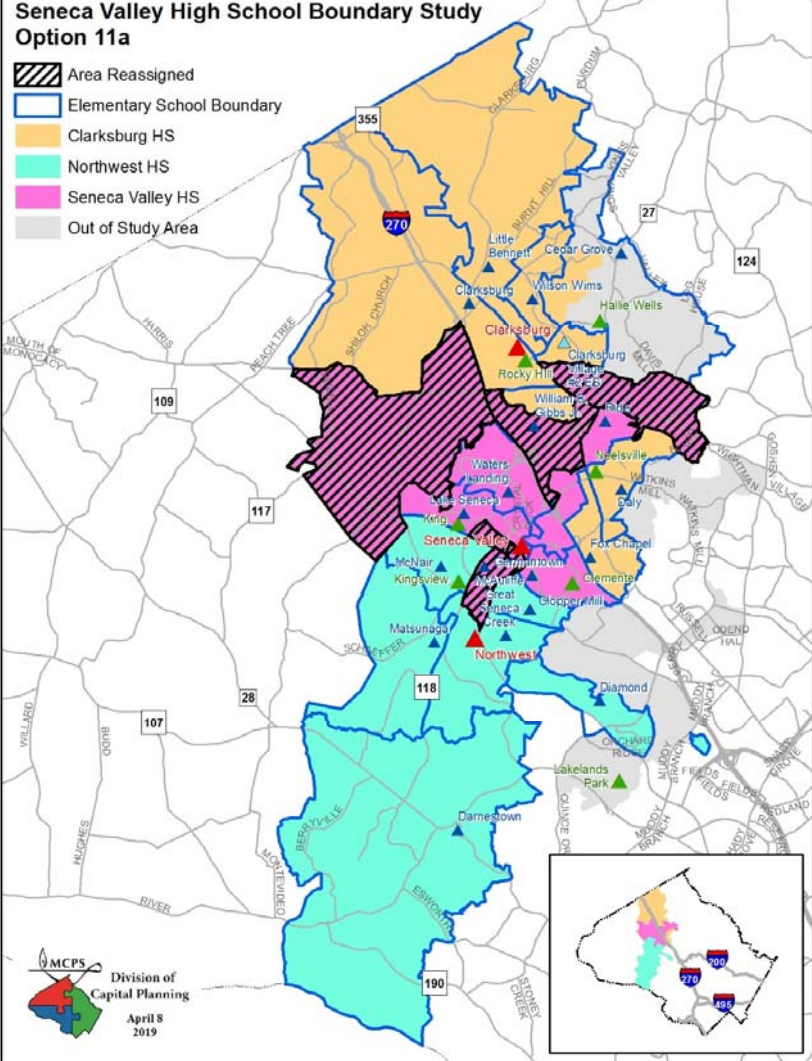
Option 11A



*MS that currently has an articulation to a HS outside of this boundary study

Seneca Valley High School Boundary Study Option 11a

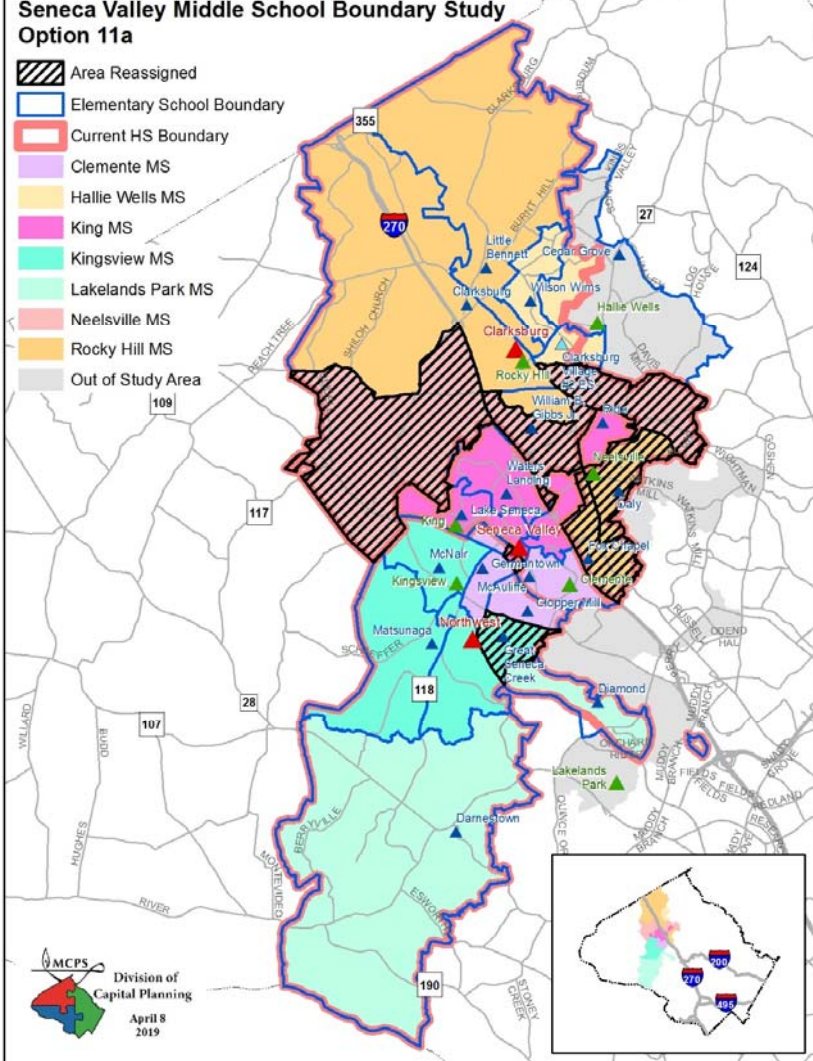
-  Area Reassigned
-  Elementary School Boundary
-  Clarksburg HS
-  Northwest HS
-  Seneca Valley HS
-  Out of Study Area



MCPS
Division of
Capital Planning
April 8
2019

Seneca Valley Middle School Boundary Study Option 11a

-  Area Reassigned
-  Elementary School Boundary
-  Current HS Boundary
-  Clemente MS
-  Hallie Wells MS
-  King MS
-  Kingsview MS
-  Lakelands Park MS
-  Neelsville MS
-  Rocky Hill MS
-  Out of Study Area



MCPS
Division of
Capital Planning
April 8
2019

Option #12 (Variation on Option 1)

Clarksburg, Northwest, and Seneca Valley Clusters Boundary Study

April 2019

Proposed High School Reassignments

Reassign Capt. James E. Daly ES and Fox Chapel ES from Clarksburg HS to Seneca Valley HS

Reassign Germantown ES from Northwest ES to Seneca Valley HS

Reassign Clopper Mill ES and Spark M. Matsunaga ES Islands from Northwest HS to Seneca Valley HS

Proposed Middle School Reassignments

Reassign Spark M. Matsunaga ES Island from Kingsview MS to Martin Luther King, Jr. MS

Reassign portion of Great Seneca Creek ES from Clemente MS to Kingsview MS

Proposed Articulation Changes

Neelsville MS will articulate to Seneca Valley HS

Creates split articulation for Spark. M. Matsunaga ES

Provides straight articulation for Great Seneca Creek ES to Kingsview MS

Proposed High School Boundary Reassignments

School	Projected Number of Students					2018-19 Race/Ethnic Composition						
	2020-21	2021-22	2022-23	2023-24	2024-25	% Afr. Amer.	% Asian	% Hispanic	% White	% 2 or More	% FARMS	% ESOL
	Clarksburg HS											
Maximum Number of Seats= 2,034												
<u>No Change:</u>												
Number of Students	2,374	2,487	2,668	2,757	2,848	28.7%	20.4%	26.8%	19.6%	4.3%	27.5%	8.2%
Percent of Building Occupied	117%	122%	131%	136%	140%							
Available Seats	-340	-453	-634	-723	-814							
<u>With Change:</u>												
Number of Students	2,062	1,998	2,043	2,106	2,207	27.4%	24.5%	18.6%	24.9%	4.6%	20.4%	4.8%
Percent of Building Occupied	101%	98%	100%	104%	109%							
Available Seats	-28	36	-9	-72	-173							
Northwest HS												
Maximum Number of Seats= 2,286												
<u>No Change:</u>												
Number of Students	2,727	2,776	2,873	2,974	2,981	25.7%	21.1%	21.7%	26.9%	4.4%	22.5%	3.2%
Percent of Building Occupied	119%	121%	126%	130%	130%							
Available Seats	-441	-490	-587	-688	-695							
<u>With Change:</u>												
Number of Students	2,567	2,529	2,550	2,649	2,680	23.6%	21.7%	21.2%	28.9%	4.5%	21.1%	3.1%
Percent of Building Occupied	112%	111%	112%	116%	117%							
Available Seats	-281	-243	-264	-363	-394							
Seneca Valley HS												
Maximum Number of Seats= 2,581												
<u>No Change:</u>												
Number of Students	1,203	1,214	1,256	1,281	1,301	34.6%	10.9%	35.8%	14.5%	4.1%	39.0%	14.1%
Percent of Building Occupied	47%	47%	49%	50%	50%							
Available Seats	1,378	1,367	1,325	1,300	1,280							
<u>With Change:</u>												
Number of Students	1,675	1,950	2,204	2,257	2,243	34.8%	11.5%	37.8%	12.0%	3.9%	39.9%	13.5%
Students Reserved for CTE Programs	500	500	500	500	500							
Percent of Building Occupied	84%	95%	105%	107%	106%							
Available Seats	406	131	-123	-176	-162							

Notes: In the 2020-2021 school year, the enrollment projections display only reassignments for students in Grades 9 and 10 to other high schools. Grade 11 and 12 students would be grandfathered at their current school assignment. For the 2021-2022 school year, the data displays Grades 9-11 reassignments with Grade 12 students grandfathered at their current school assignment.

The superintendent will make a recommendation regarding special programs for current high school students as part of his recommendation in October 2019.

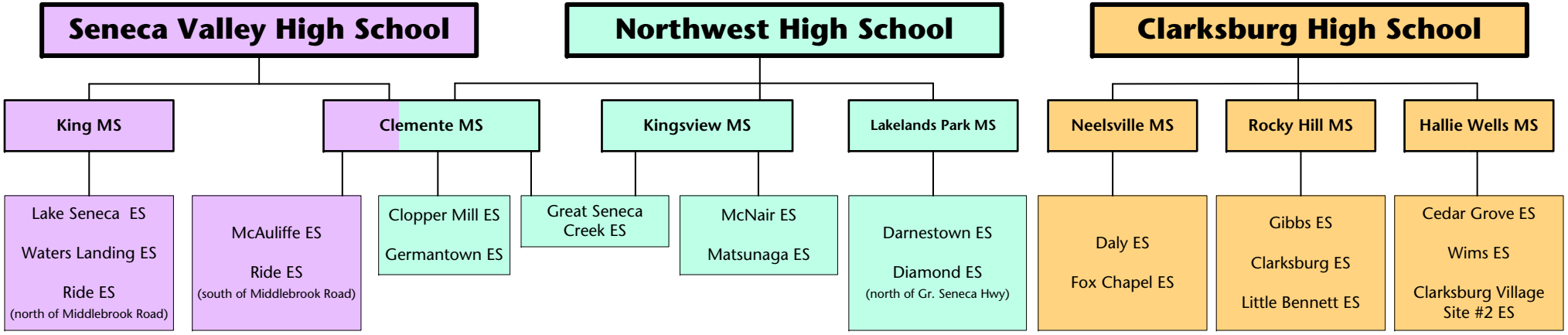
No option will provide full capacity relief for Clarksburg or Northwest high schools. It is anticipated that, capacity relief for Northwest High School will be provided in the future with the opening of Crown High School. A long-term plan for Clarksburg High School will be developed in a future CIP.

Proposed Middle School Boundary Reassignments

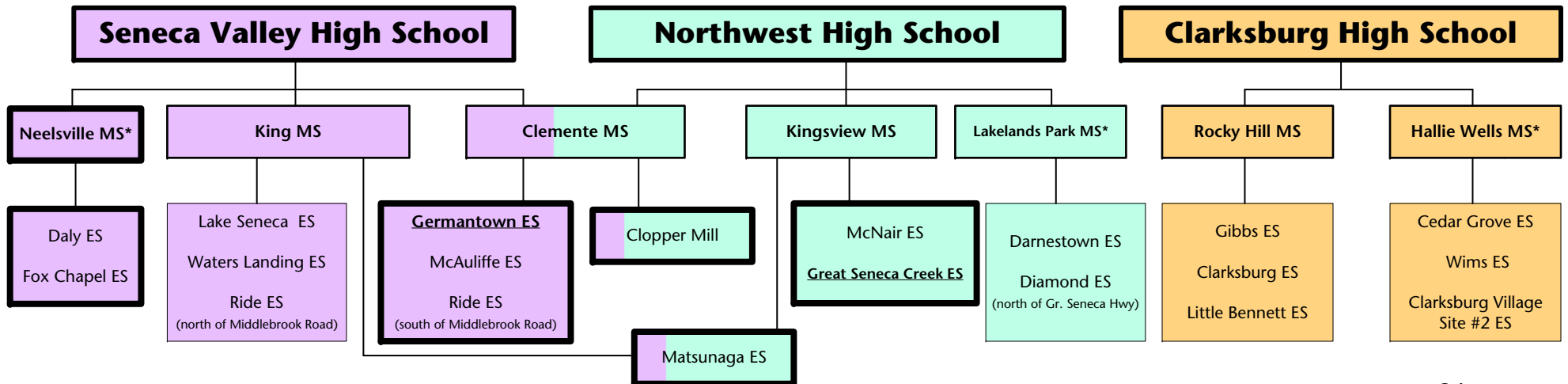
School	Projected Number of Students					2018-19 Race/Ethnic Composition						
	2020-21	2021-22	2022-23	2023-24	2024-25	% Afr. Amer.	% Asian	% Hispanic	% White	% 2 or More	% FARMS	% ESOL
	Roberto Clemente MS											
Maximum Number of Seats= 1,231												
<u>No Change:</u>												
Number of Students	1,335	1,360	1,373	1,392	1,394	26.1%	23.7%	30.7%	13.8%	5.6%	36.4%	6.1%
<i>Percent of Building Occupied</i>	108%	110%	112%	113%	113%							
Available Seats	-104	-129	-142	-161	-163							
<u>With Change:</u>												
Number of Students	1,204	1,166	1,196	1,220	1,229	25.5%	25.2%	29.5%	14.1%	5.8%	35.5%	5.7%
<i>Percent of Building Occupied</i>	98%	95%	97%	99%	100%							
Available Seats	27	65	35	11	2							
Martin Luther King, Jr. MS												
Maximum Number of Seats= 914												
<u>No Change:</u>												
Number of Students	757	793	800	798	838	37.7%	12.0%	31.9%	13.4%	4.8%	44.9%	9.9%
<i>Percent of Building Occupied</i>	83%	87%	88%	87%	92%							
Available Seats	157	121	114	116	76							
<u>With Change:</u>												
Number of Students	794	857	877	885	927	39.2%	12.0%	31.2%	13.0%	4.6%	45.2%	9.5%
<i>Percent of Building Occupied</i>	87%	94%	96%	97%	101%							
Available Seats	120	57	37	29	-13							
Kingsview MS												
Maximum Number of Seats= 1,041												
<u>No Change:</u>												
Number of Students	1,014	1,003	997	980	979	26.2%	24.5%	14.7%	28.2%	6.2%	21.3%	2.6%
<i>Percent of Building Occupied</i>	97%	96%	96%	94%	94%							
Available Seats	27	38	44	61	62							
<u>With Change:</u>												
Number of Students	1,108	1,133	1,097	1,065	1,055	25.2%	23.7%	18.3%	26.5%	6.2%	23.5%	3.4%
<i>Percent of Building Occupied</i>	106%	109%	105%	102%	101%							
Available Seats	-67	-92	-56	-24	-14							

Note: In the 2020-2021 school year, the enrollment projections display reassignments for students in Grades 6 and 7 students to other middle schools while Grade 8 students are grandfathered at their current school assignment. In the 2021-2022 the data displays all Grade 6-8 students reassignments.

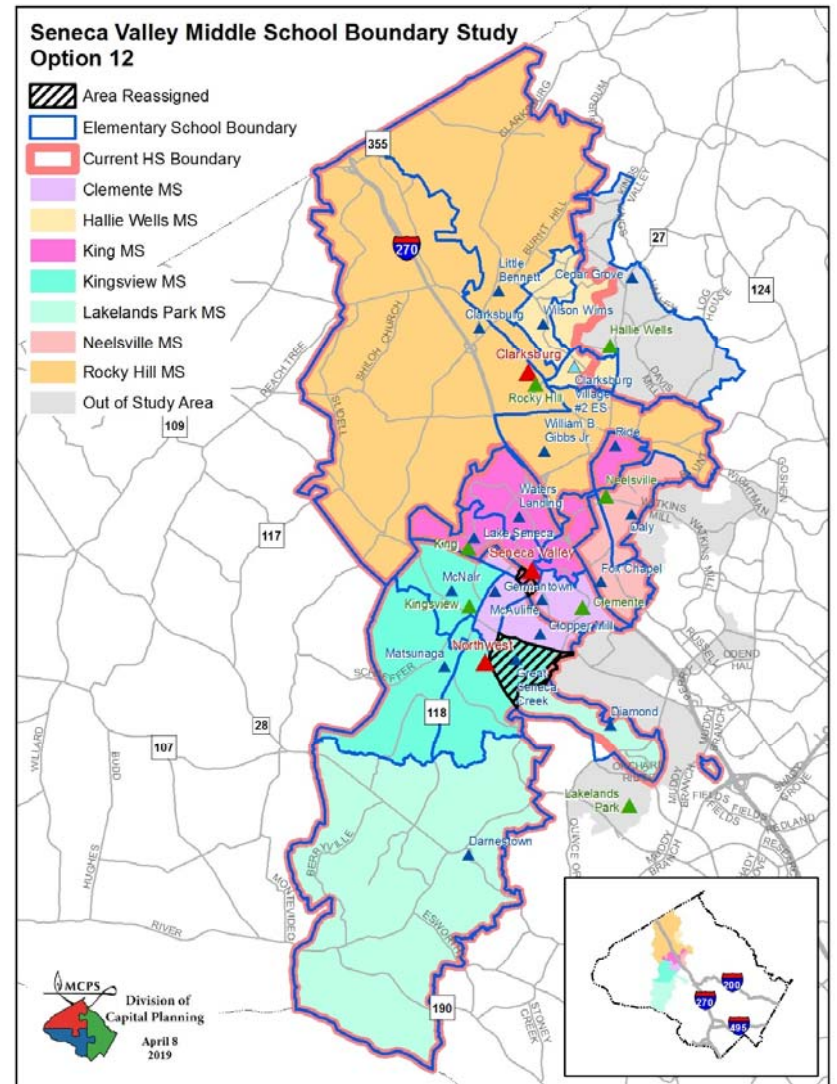
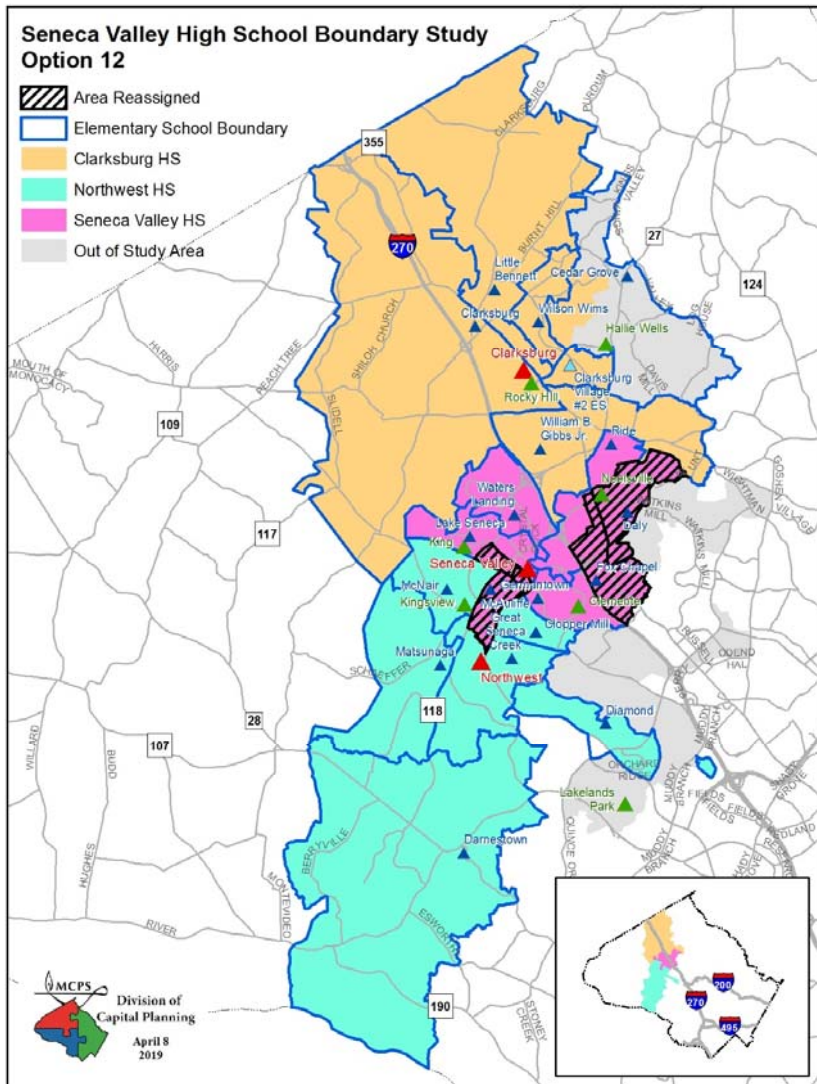
Current Boundary Articulations



Option 12



*MS that currently has an articulation to a HS outside of this boundary study



Summary of 2nd Round of Options by School

Clarksburg, Northwest, and Seneca Valley Clusters Boundary Study

April 2019

School	Projected Number of Students					2018-19						
						Race/Ethnic Composition						
	2020-21	2021-22	2022-23	2023-24	2024-25	% Afr. Amer.	% Asian	% Hispanic	% White	% 2 or More	% FARMs	% ESOL
Clarksburg HS												
Maximum Number of Seats= 2,034												
<u>Current Boundaries</u>												
Number of Students	2,374	2,487	2,668	2,757	2,848	28.7%	20.4%	26.8%	19.6%	4.3%	27.5%	8.2%
<i>Percent of Building Occupied</i>	117%	122%	131%	136%	140%							
Available Seats	-340	-453	-634	-723	-814							
<u>Option 8</u>												
Number of Students	2,041	1,991	2,036	2,114	2,227	27.7%	22.8%	24.1%	21.0%	4.3%	23.7%	7.2%
<i>Percent of Building Occupied</i>	100%	98%	100%	104%	109%							
Available Seats	-7	43	-2	-80	-193							
<u>Option 9</u>												
Number of Students	2,041	1,991	2,036	2,114	2,227	27.7%	22.8%	24.1%	21.0%	4.3%	23.7%	7.2%
<i>Percent of Building Occupied</i>	100%	98%	100%	104%	109%							
Available Seats	-7	43	-2	-80	-193							
<u>Option 10</u>												
Number of Students	2,128	2,098	2,166	2,238	2,313	27.8%	22.0%	24.3%	21.4%	4.5%	24.9%	7.8%
<i>Percent of Building Occupied</i>	105%	103%	106%	110%	114%							
Available Seats	-94	-64	-132	-204	-279							
<u>Option 11</u>												
Number of Students	2,154	2,124	2,150	2,243	2,296	28.5%	20.2%	29.0%	17.9%	4.4%	28.5%	9.4%
<i>Percent of Building Occupied</i>	106%	104%	106%	110%	113%							
Available Seats	-120	-90	-116	-209	-262							
<u>Option 11a</u>												
Number of Students	2,154	2,124	2,150	2,243	2,296	28.5%	20.2%	29.0%	17.9%	4.4%	28.5%	9.4%
<i>Percent of Building Occupied</i>	106%	104%	106%	110%	113%							
Available Seats	-120	-90	-116	-209	-262							
<u>Option 12</u>												
Number of Students	2,062	1,998	2,043	2,106	2,207	27.4%	24.5%	18.6%	24.9%	4.6%	20.4%	4.8%
<i>Percent of Building Occupied</i>	101%	98%	100%	104%	109%							
Available Seats	-28	36	-9	-72	-173							

Notes: In the 2020-2021 school year, the enrollment projections display only reassignments for students in Grades 9 and 10 to other high schools. Grade 11 and 12 students would be grandfathered at their current school assignment. For the 2021-2022 school year, the data displays Grades 9-11 reassignments with Grade 12 students grandfathered at their current school assignment.

The superintendent will make a recommendation regarding special programs for current high school students as part of his recommendation in October 2019.

No option will provide full capacity relief for Clarksburg or Northwest high schools. It is anticipated that, capacity relief for Northwest High School will be provided in the future with the opening of Crown High School. A long-term plan for Clarksburg High School will be developed in a future CIP.

School	Projected Number of Students					2018–19 Race/Ethnic Composition						
	2020–21	2021–22	2022–23	2023–24	2024–25	% Afr. Amer.	% Asian	% Hispanic	% White	% 2 or More	% FARMS	% ESOL
	Northwest HS											
Maximum Number of Seats= 2,286												
<u>Current Boundaries</u>												
Number of Students	2,727	2,776	2,873	2,974	2,981	25.7%	21.1%	21.7%	26.9%	4.4%	22.5%	3.2%
<i>Percent of Building Occupied</i>	119%	121%	126%	130%	130%							
Available Seats	-441	-490	-587	-688	-695							
<u>Option 8</u>												
Number of Students	2,665	2,671	2,744	2,847	2,854	24.6%	21.4%	21.7%	27.8%	4.6%	21.6%	3.2%
<i>Percent of Building Occupied</i>	117%	117%	120%	125%	125%							
Available Seats	-379	-385	-458	-561	-568							
<u>Option 9</u>												
Number of Students	2,567	2,529	2,550	2,649	2,680	23.6%	21.7%	21.2%	28.9%	4.5%	21.1%	3.1%
<i>Percent of Building Occupied</i>	112%	111%	112%	116%	117%							
Available Seats	-281	-243	-264	-363	-394							
<u>Option 10</u>												
Number of Students	2,612	2,594	2,634	2,740	2,759	24.1%	21.6%	21.4%	28.2%	4.6%	21.6%	3.2%
<i>Percent of Building Occupied</i>	114%	113%	115%	120%	121%							
Available Seats	-326	-308	-348	-454	-473							
<u>Option 11</u>												
Number of Students	2,665	2,671	2,744	2,847	2,854	24.6%	21.4%	21.7%	27.8%	4.6%	21.6%	3.2%
<i>Percent of Building Occupied</i>	117%	117%	120%	125%	125%							
Available Seats	-379	-385	-458	-561	-568							
<u>Option 11a</u>												
Number of Students	2,567	2,529	2,550	2,649	2,680	23.6%	21.7%	21.2%	28.9%	4.5%	21.1%	3.1%
<i>Percent of Building Occupied</i>	112%	111%	112%	116%	117%							
Available Seats	-281	-243	-264	-363	-394							
<u>Option 12</u>												
Number of Students	2,567	2,529	2,550	2,649	2,680	23.6%	21.7%	21.2%	28.9%	4.5%	21.1%	3.1%
<i>Percent of Building Occupied</i>	112%	111%	112%	116%	117%							
Available Seats	-281	-243	-264	-363	-394							

Notes: In the 2020–2021 school year, the enrollment projections display only reassignments for students in Grades 9 and 10 to other high schools. Grade 11 and 12 students would be grandfathered at their current school assignment. For the 2021–2022 school year, the data displays Grades 9–11 reassignments with Grade 12 students grandfathered at their current school assignment.

The superintendent will make a recommendation regarding special programs for current high school students as part of his recommendation in October 2019.

No option will provide full capacity relief for Clarksburg or Northwest high schools. It is anticipated that, capacity relief for Northwest High School will be provided in the future with the opening of Crown High School. A long-term plan for Clarksburg High School will be developed in a future CIP.

School	Projected Number of Students					2018-19 Race/Ethnic Composition						
	2020-21	2021-22	2022-23	2023-24	2024-25	% Afr. Amer.	% Asian	% Hispanic	% White	% 2 or More	% FARMS	% ESOL
	Seneca Valley HS											
Maximum Number of Seats= 2,581												
<u>Current Boundaries</u>												
Number of Students	1,203	1,214	1,256	1,281	1,301	34.6%	10.9%	35.8%	14.5%	4.1%	39.0%	14.1%
<i>Percent of Building Occupied</i>	<i>47%</i>	<i>47%</i>	<i>49%</i>	<i>50%</i>	<i>50%</i>							
Available Seats	1,378	1,367	1,325	1,300	1,280							
<u>Option 8</u>												
Number of Students	1,598	1,815	2,017	2,051	2,049	34.4%	12.5%	34.1%	15.0%	4.0%	38.2%	12.3%
Students Reserved for CTE Programs	500	500	500	500	500							
<i>Percent of Building Occupied</i>	<i>81%</i>	<i>90%</i>	<i>98%</i>	<i>99%</i>	<i>99%</i>							
Available Seats	483	266	64	30	32							
<u>Option 9</u>												
Number of Students	1,696	1,957	2,211	2,249	2,223	34.4%	13.0%	33.4%	15.1%	4.1%	37.1%	11.5%
Students Reserved for CTE Programs	500	500	500	500	500							
<i>Percent of Building Occupied</i>	<i>85%</i>	<i>95%</i>	<i>105%</i>	<i>107%</i>	<i>106%</i>							
Available Seats	385	124	-130	-168	-142							
<u>Option 10</u>												
Number of Students	1,564	1,785	1,997	2,034	2,058	34.8%	12.7%	34.2%	14.5%	3.9%	37.2%	11.7%
Students Reserved for CTE Programs	500	500	500	500	500							
<i>Percent of Building Occupied</i>	<i>80%</i>	<i>89%</i>	<i>97%</i>	<i>98%</i>	<i>99%</i>							
Available Seats	517	296	84	47	23							
<u>Option 11</u>												
Number of Students	1,485	1,682	1,903	1,922	1,980	34.6%	13.7%	30.4%	17.5%	3.9%	35.4%	10.7%
Students Reserved for CTE Programs	500	500	500	500	500							
<i>Percent of Building Occupied</i>	<i>77%</i>	<i>85%</i>	<i>93%</i>	<i>94%</i>	<i>96%</i>							
Available Seats	596	399	178	159	101							
<u>Option 11a</u>												
Number of Students	1,583	1,824	2,097	2,120	2,154	34.6%	14.1%	30.0%	17.2%	4.0%	34.4%	10.0%
Students Reserved for CTE Programs	500	500	500	500	500							
<i>Percent of Building Occupied</i>	<i>81%</i>	<i>90%</i>	<i>101%</i>	<i>102%</i>	<i>103%</i>							
Available Seats	498	257	-16	-39	-73							
<u>Option 12</u>												
Number of Students	1,675	1,950	2,204	2,257	2,243	34.8%	11.5%	37.8%	12.0%	3.9%	39.9%	13.5%
Students Reserved for CTE Programs	500	500	500	500	500							
<i>Percent of Building Occupied</i>	<i>84%</i>	<i>95%</i>	<i>105%</i>	<i>107%</i>	<i>106%</i>							
Available Seats	406	131	-123	-176	-162							

Notes: In the 2020-2021 school year, the enrollment projections display only reassignments for students in Grades 9 and 10 to other high schools. Grade 11 and 12 students would be grandfathered at their current school assignment. For the 2021-2022 school year, the data displays Grades 9-11 reassignments with Grade 12 students grandfathered at their current school assignment.

The superintendent will make a recommendation regarding special programs for current high school students as part of his recommendation in October 2019.

No option will provide full capacity relief for Clarksburg or Northwest high schools. It is anticipated that, capacity relief for Northwest High School will be provided in the future with the opening of Crown High School. A long-term plan for Clarksburg High School will be developed in a future CIP.

School	Projected Number of Students					2018-19 Race/Ethnic Composition						
	2020-21	2021-22	2022-23	2023-24	2024-25	% Afr. Amer.	% Asian	% Hispanic	% White	% 2 or More	% FARMS	% ESOL
	Roberto Clemente MS											
Maximum Number of Seats= 1,231												
<u>Current Boundaries</u>												
Number of Students	1,335	1,360	1,373	1,392	1,394	26.1%	23.7%	30.7%	13.8%	5.6%	36.4%	6.1%
<i>Percent of Building Occupied</i>	108%	110%	112%	113%	113%							
Available Seats	-104	-129	-142	-161	-163							
<u>Option 8</u>												
Number of Students	1,204	1,166	1,196	1,220	1,229	25.5%	25.2%	29.5%	14.1%	5.8%	35.5%	5.7%
<i>Percent of Building Occupied</i>	98%	95%	97%	99%	100%							
Available Seats	27	65	35	11	2							
<u>Option 9</u>												
Number of Students	1,204	1,166	1,196	1,220	1,229	25.5%	25.2%	29.5%	14.1%	5.8%	35.5%	5.7%
<i>Percent of Building Occupied</i>	98%	95%	97%	99%	100%							
Available Seats	27	65	35	11	2							
<u>Option 10</u>												
Number of Students	1,204	1,166	1,196	1,220	1,229	25.5%	25.2%	29.5%	14.1%	5.8%	35.5%	5.7%
<i>Percent of Building Occupied</i>	98%	95%	97%	99%	100%							
Available Seats	27	65	35	11	2							
<u>Option 11</u>												
Number of Students	1,204	1,166	1,196	1,220	1,229	25.5%	25.2%	29.5%	14.1%	5.8%	35.5%	5.7%
<i>Percent of Building Occupied</i>	98%	95%	97%	99%	100%							
Available Seats	27	65	35	11	2							
<u>Option 11a</u>												
Number of Students	1,204	1,166	1,196	1,220	1,229	25.5%	25.2%	29.5%	14.1%	5.8%	35.5%	5.7%
<i>Percent of Building Occupied</i>	98%	95%	97%	99%	100%							
Available Seats	27	65	35	11	2							
<u>Option 12</u>												
Number of Students	1,204	1,166	1,196	1,220	1,229	25.5%	25.2%	29.5%	14.1%	5.8%	35.5%	5.7%
<i>Percent of Building Occupied</i>	98%	95%	97%	99%	100%							
Available Seats	27	65	35	11	2							

Note: In the 2020-2021 school year, the enrollment projections display reassignments for students in Grades 6 and 7 to other middle schools while Grade 8 students are grandfathered at their current school assignment. In the 2021-2022 the data displays all Grade 6-8 students reassignments.

School	Projected Number of Students					2018-19 Race/Ethnic Composition						
	2020-21	2021-22	2022-23	2023-24	2024-25	% Afr. Amer.	% Asian	% Hispanic	% White	% 2 or More	% FARMS	% ESOL
	Martin Luther King, Jr. MS											
Maximum Number of Seats=	914											
<u>Current Boundaries</u>												
Number of Students	757	793	800	798	838	37.7%	12.0%	31.9%	13.4%	4.8%	44.9%	9.9%
<i>Percent of Building Occupied</i>	83%	87%	88%	87%	92%							
Available Seats	157	121	114	116	76							
<u>Option 8</u>												
Number of Students	794	857	877	885	927	39.2%	12.0%	31.2%	13.0%	4.6%	45.2%	9.5%
<i>Percent of Building Occupied</i>	87%	94%	96%	97%	101%							
Available Seats	120	57	37	29	-13							
<u>Option 9</u>												
Number of Students	794	857	877	885	927	39.2%	12.0%	31.2%	13.0%	4.6%	45.2%	9.5%
<i>Percent of Building Occupied</i>	87%	94%	96%	97%	101%							
Available Seats	120	57	37	29	-13							
<u>Option 10</u>												
Number of Students	794	857	877	885	927	39.2%	12.0%	31.2%	13.0%	4.6%	45.2%	9.5%
<i>Percent of Building Occupied</i>	87%	94%	96%	97%	101%							
Available Seats	120	57	37	29	-13							
<u>Option 11</u>												
Number of Students	794	857	877	885	927	39.2%	12.0%	31.2%	13.0%	4.6%	45.2%	9.5%
<i>Percent of Building Occupied</i>	87%	94%	96%	97%	101%							
Available Seats	120	57	37	29	-13							
<u>Option 11a</u>												
Number of Students	794	857	877	885	927	39.2%	12.0%	31.2%	13.0%	4.6%	45.2%	9.5%
<i>Percent of Building Occupied</i>	87%	94%	96%	97%	101%							
Available Seats	120	57	37	29	-13							
<u>Option 12</u>												
Number of Students	794	857	877	885	927	39.2%	12.0%	31.2%	13.0%	4.6%	45.2%	9.5%
<i>Percent of Building Occupied</i>	87%	94%	96%	97%	101%							
Available Seats	120	57	37	29	-13							

Note: In the 2020-2021 school year, the enrollment projections display reassignments for students in Grades 6 and 7 to other middle schools while Grade 8 students are grandfathered at their current school assignment. In the 2021-2022 the data displays all Grade 6-8 students reassignments.

School	Projected Number of Students					2018-19 Race/Ethnic Composition						
	2020-21	2021-22	2022-23	2023-24	2024-25	% Afr. Amer.	% Asian	% Hispanic	% White	% 2 or More	% FARMS	% ESOL
	Kingsview MS											
Maximum Number of Seats= 1,041												
<u>Current Boundaries</u>												
Number of Students	1,014	1,003	997	980	979	26.2%	24.5%	14.7%	28.2%	6.2%	21.3%	2.6%
<i>Percent of Building Occupied</i>	97%	96%	96%	94%	94%							
Available Seats	27	38	44	61	62							
<u>Option 8</u>												
Number of Students	1,108	1,133	1,097	1,065	1,055	25.2%	23.7%	18.3%	26.5%	6.2%	23.5%	3.4%
<i>Percent of Building Occupied</i>	106%	109%	105%	102%	101%							
Available Seats	-67	-92	-56	-24	-14							
<u>Option 9</u>												
Number of Students	1,108	1,133	1,097	1,065	1,055	25.2%	23.7%	18.3%	26.5%	6.2%	23.5%	3.4%
<i>Percent of Building Occupied</i>	106%	109%	105%	102%	101%							
Available Seats	-67	-92	-56	-24	-14							
<u>Option 10</u>												
Number of Students	1,108	1,133	1,097	1,065	1,055	25.2%	23.7%	18.3%	26.5%	6.2%	23.5%	3.4%
<i>Percent of Building Occupied</i>	106%	109%	105%	102%	101%							
Available Seats	-67	-92	-56	-24	-14							
<u>Option 11</u>												
Number of Students	1,108	1,133	1,097	1,065	1,055	25.2%	23.7%	18.3%	26.5%	6.2%	23.5%	3.4%
<i>Percent of Building Occupied</i>	106%	109%	105%	102%	101%							
Available Seats	-67	-92	-56	-24	-14							
<u>Option 11a</u>												
Number of Students	1,108	1,133	1,097	1,065	1,055	25.2%	23.7%	18.3%	26.5%	6.2%	23.5%	3.4%
<i>Percent of Building Occupied</i>	106%	109%	105%	102%	101%							
Available Seats	-67	-92	-56	-24	-14							
<u>Option 12</u>												
Number of Students	1,108	1,133	1,097	1,065	1,055	25.2%	23.7%	18.3%	26.5%	6.2%	23.5%	3.4%
<i>Percent of Building Occupied</i>	106%	109%	105%	102%	101%							
Available Seats	-67	-92	-56	-24	-14							

Note: In the 2020-2021 school year, the enrollment projections display reassignments for students in Grades 6 and 7 to other middle schools while Grade 8 students are grandfathered at their current school assignment. In the 2021-2022 the data displays all Grade 6-8 students reassignments.

School	Projected Number of Students					2018-19 Race/Ethnic Composition						
	2020-21	2021-22	2022-23	2023-24	2024-25	% Afr. Amer.	% Asian	% Hispanic	% White	% 2 or More	% FARMS	% ESOL
	Lakelands Park MS (No proposed changes in 2nd Round of Options)											
Maximum Number of Seats= 1,147												
<u>Current Boundaries</u>												
Number of Students	1,146	1,151	1,171	1,191	1,195	16.5%	14.4%	23.4%	39.6%	6.2%	23.7%	7.4%
<i>Percent of Building Occupied</i>	100%	100%	102%	104%	104%							
Available Seats	1	-4	-24	-44	-48							

School	2018-19					2018-19						
	Projected Number of Students					Race/Ethnic Composition						
	2020-21	2021-22	2022-23	2023-24	2024-25	% Afr. Amer.	% Asian	% Hispanic	% White	% 2 or More	% FARMS	% ESOL
Neelsville MS												
Maximum Number of Seats=	956											
<u>Current Boundaries</u>												
Number of Students	933	908	917	946	957	34.3%	8.8%	49.6%	4.3%	2.5%	66.7%	18.0%
<i>Percent of Building Occupied</i>	98%	95%	96%	99%	100%							
Available Seats	23	48	39	10	-1							
<u>Option 8</u>												
Number of Students	930	894	914	951	973	32.0%	13.3%	42.3%	8.1%	4.2%	60.5%	16.1%
<i>Percent of Building Occupied</i>	97%	94%	96%	99%	102%							
Available Seats	26	62	42	5	-17							
<u>Option 9</u>												
Number of Students	930	894	914	951	973	32.0%	13.3%	42.3%	8.1%	4.2%	60.5%	16.1%
<i>Percent of Building Occupied</i>	97%	94%	96%	99%	102%							
Available Seats	26	62	42	5	-17							
<u>Option 10</u>												
Number of Students	828	734	736	762	780	34.2%	10.2%	47.6%	5.2%	2.8%	68.0%	18.4%
<i>Percent of Building Occupied</i>	87%	77%	77%	80%	82%							
Available Seats	128	222	220	194	176							
<u>Option 11</u>												
Number of Students	854	795	869	928	976	26.2%	17.3%	41.6%	10.3%	4.6%	53.9%	16.9%
<i>Percent of Building Occupied</i>	89%	83%	91%	97%	102%							
Available Seats	102	161	87	28	-20							
<u>Option 11a</u>												
Number of Students	854	795	869	928	976	26.2%	17.3%	41.6%	10.3%	4.6%	53.9%	16.9%
<i>Percent of Building Occupied</i>	89%	83%	91%	97%	102%							
Available Seats	102	161	87	28	-20							
<u>Option 12</u>												
Number of Students	933	908	917	946	957	34.3%	8.8%	49.6%	4.3%	2.5%	66.7%	18.0%
<i>Percent of Building Occupied</i>	98%	95%	96%	99%	100%							
Available Seats	23	48	39	10	-1							

Note: In the 2020-2021 school year, the enrollment projections display reassignments for students in Grades 6 and 7 to other middle schools while Grade 8 students are grandfathered at their current school assignment. In the 2021-2022 the data displays all Grade 6-8 students reassignments. A capital project is planned for Neelsville Middle School that will address various building systems and programmatic needs for this school. A scope for the project will be determine during this school year with a completion date to be determined in a future Capital Improvements Program.

School	Projected Number of Students					2018-19 Race/Ethnic Composition						
	2020-21	2021-22	2022-23	2023-24	2024-25	% Afr. Amer.	% Asian	% Hispanic	% White	% 2 or More	% FARMS	% ESOL
	Rocky Hill MS											
Maximum Number of Seats= 1,020												
<u>Current Boundaries</u>												
Number of Students	799	899	946	998	1,023	24.3%	29.0%	17.9%	21.7%	6.9%	22.5%	4.5%
<i>Percent of Building Occupied</i>	78%	88%	93%	98%	100%							
Available Seats	221	121	74	22	-3							
<u>Option 8</u>												
Number of Students	802	913	949	993	1,007	27.0%	24.2%	26.2%	17.6%	5.0%	29.7%	6.7%
<i>Percent of Building Occupied</i>	79%	90%	93%	97%	99%							
Available Seats	218	107	71	27	13							
<u>Option 9</u>												
Number of Students	802	913	949	993	1,007	27.0%	24.2%	26.2%	17.6%	5.0%	29.7%	6.7%
<i>Percent of Building Occupied</i>	79%	90%	93%	97%	99%							
Available Seats	218	107	71	27	13							
<u>Option 10</u>												
Number of Students	904	1,073	1,127	1,182	1,200	26.4%	24.4%	25.3%	18.0%	5.9%	30.0%	6.8%
<i>Percent of Building Occupied</i>	89%	105%	110%	116%	118%							
Available Seats	116	-53	-107	-162	-180							
<u>Option 11</u>												
Number of Students	878	1,012	994	1,016	1,004	32.3%	19.3%	29.6%	14.2%	4.6%	40.1%	7.8%
<i>Percent of Building Occupied</i>	86%	99%	97%	100%	98%							
Available Seats	142	8	26	4	16							
<u>Option 11a</u>												
Number of Students	878	1,012	994	1,016	1,004	32.3%	19.3%	29.6%	14.2%	4.6%	40.1%	7.8%
<i>Percent of Building Occupied</i>	86%	99%	97%	100%	98%							
Available Seats	142	8	26	4	16							
<u>Option 12</u>												
Number of Students	799	899	946	998	1,023	24.3%	29.0%	17.9%	21.7%	6.9%	22.5%	4.5%
<i>Percent of Building Occupied</i>	78%	88%	93%	98%	100%							
Available Seats	221	121	74	22	-3							

School	Projected Number of Students					2018-19 Race/Ethnic Composition						
	2020-21	2021-22	2022-23	2023-24	2024-25	% Afr. Amer.	% Asian	% Hispanic	% White	% 2 or More	% FARMS	% ESOL
	Hallie Wells MS (No Proposed Changes in 2nd Round of Options)											
Maximum Number of Seats= 982												
<u>Current Boundaries</u>												
Number of Students	848	877	949	1,002	1,032	21.3%	33.7%	13.8%	23.4%	7.7%	16.5%	3.2%
<i>Percent of Building Occupied</i>	86%	89%	97%	102%	105%							
Available Seats	134	105	33	-20	-50							

Note: In the 2020-2021 school year, the enrollment projections display reassignments for students in Grades 6 and 7 students to other middle schools while Grade 8 students are grandfathered at their current school assignment. In the 2021-2022 the data displays all Grade 6-8 students reassignments.