

Forest Knolls, Montgomery Knolls, and Pine Crest Elementary Schools Boundary Study

Presentation of First Round of Options
April 23 and 24, 2019

[https://www.montgomeryschoolsmd.org/departments/planning/
DownCountyESBoundaryStudy.aspx](https://www.montgomeryschoolsmd.org/departments/planning/DownCountyESBoundaryStudy.aspx)



Agenda

- Board of Education Approved Resolution
- Policy Factors
- Guiding Parameters for Option Development
- Current Information
- Presentation of Options
- Questions and Answers
- Next Steps



Board of Education Resolution

ADOPTED
2.3

Office of the Superintendent of Schools
MONTGOMERY COUNTY PUBLIC SCHOOLS
Rockville, Maryland

November 27, 2018

MEMORANDUM

To: Members of the Board of Education
From: Jack R. Smith, Superintendent of Schools
Subject: Forest Knolls, Montgomery Knolls, and Pine Crest Elementary Schools Boundary Study

As a result of a comprehensive capacity study conducted during the 2014–2015 school year to address overutilization in the lower section of the Downcounty Consortium, a plan was developed to address space deficits at Forest Knolls Elementary School. Classroom addition projects were approved at Montgomery Knolls Elementary School, which serves Grades pre–K–2 students; and Pine Crest Elementary School, which serves Grades 3–5 students; these are paired schools. These projects are scheduled for completion in September 2020. Forest Knolls Elementary School articulates to Silver Spring International Middle School, while Montgomery Knolls and Pine Crest elementary schools articulate to Eastern Middle School.

WHEREAS, On November 1 and 16, 2018, the Board of Education conducted work sessions for all capital and noncapital items for the *Superintendent's Recommended FY 2020 Capital Budget and Amendments to the FY 2019–2024 Capital Improvements Program*; and

WHEREAS, On November 8 and 12, 2018, the Board of Education conducted public hearings in accordance with Board of Education Policy FAA, *Educational Facilities Planning*, and Montgomery County Public Schools Regulation FAA-RA, *Long-range Educational Facilities Planning*, on the superintendent's recommendation; and

WHEREAS, The superintendent of schools recommended a boundary study for Forest Knolls, Montgomery Knolls, and Pine Crest elementary schools to relieve the overutilization at Forest Knolls Elementary School; and

WHEREAS, The superintendent of schools also recommended that the boundary study include the middle school articulation of the three elementary schools to Eastern and Silver Spring International middle schools; now therefore be it

Resolved, That the boundary study be conducted to include Forest Knolls, Montgomery Knolls, and Pine Crest elementary schools to relieve the overutilization at Forest Knolls Elementary School; and be it further

<https://www.montgomeryschoolsmd.org/departments/planning/DownCountyESBoundaryStudy.aspx>

Board Resolution

- Adopted November 2018
- To include Forest Knolls, Montgomery Knolls, and Pine Crest elementary schools to relieve the overutilization at Forest Knolls ES
- To include Eastern and Silver Spring International middle schools
 - Montgomery Knolls ES/Pine Crest ES articulate Eastern MS
 - Forest Knolls ES articulates to Silver Spring International MS
- To be conducted in spring 2019 with the superintendent's report submitted to the Board of Education by the end of the 2018–2019 school year

Policy FAA Factors



Policy FAA Factors

- Demographic Characteristics of Student Population
 - Analyses of options take into account the overall populations of affected schools
 - Options should especially strive to create a diverse student body
- Geography
 - Options should take into account the geographic proximity of communities to schools, as well as articulation, traffic, and transportation patterns, and topography

Policy Factors

- **Stability of School Assignment Over Time**
 - Options should result in stable assignments for as long a period as possible and should consider recent assignments
- **Facility Utilization**
 - Plans should result in facility utilization in 80-100% range over the long term, whenever possible.
 - Shared use of a facility by more than one cluster may be the most feasible plan in some cases
 - Plans should be fiscally responsible

Parameters for Option Development

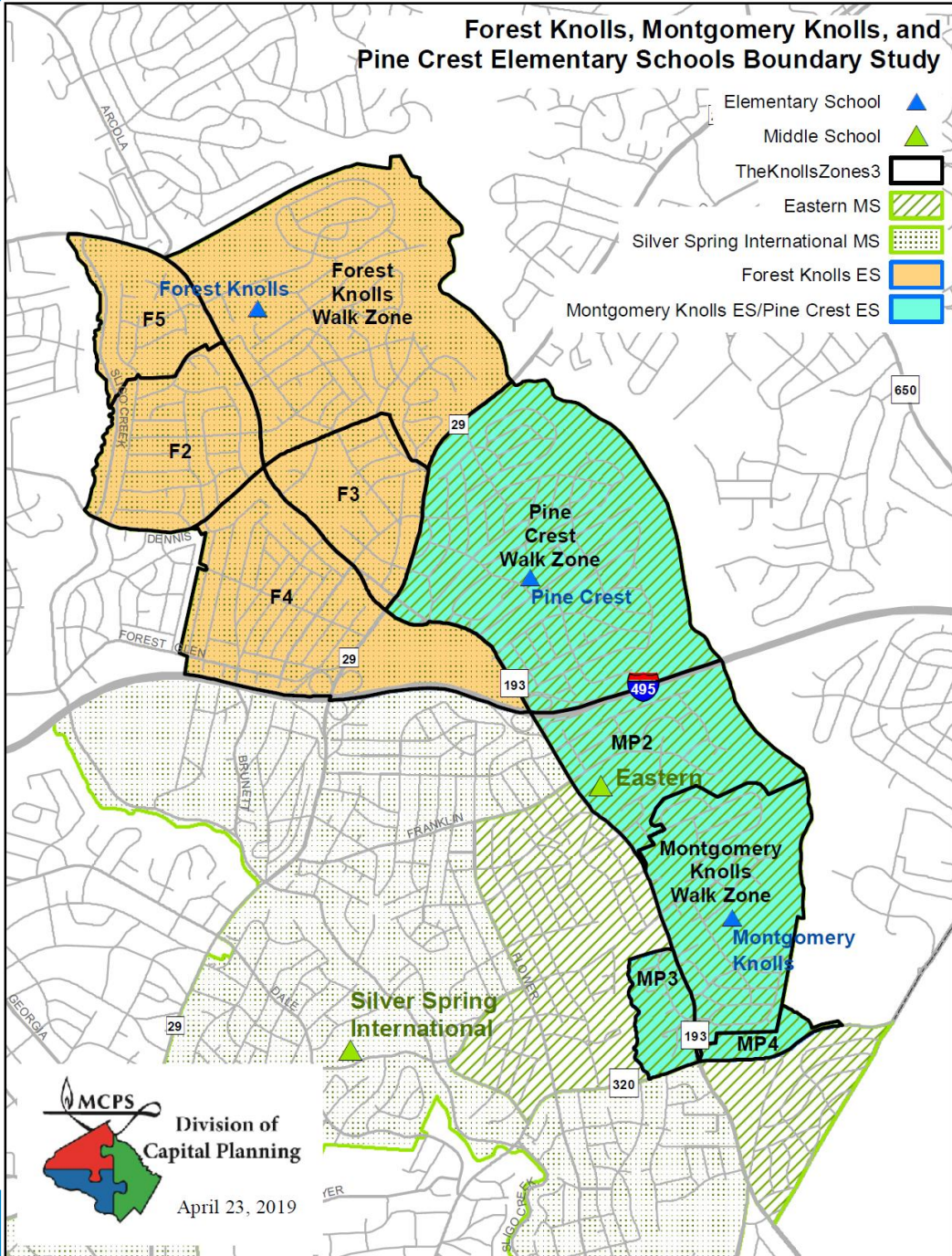


Guiding Parameters for Option Development

- Three policy factors used to develop options
 - Demographic Characteristics of Student Population
 - Geography
 - Facility Utilization
- Stability factor does not need to be considered in this boundary study
- Maintain walkers
- Grandfather Grade 5 students at Forest Knolls ES

Current Information

Map of Study Area



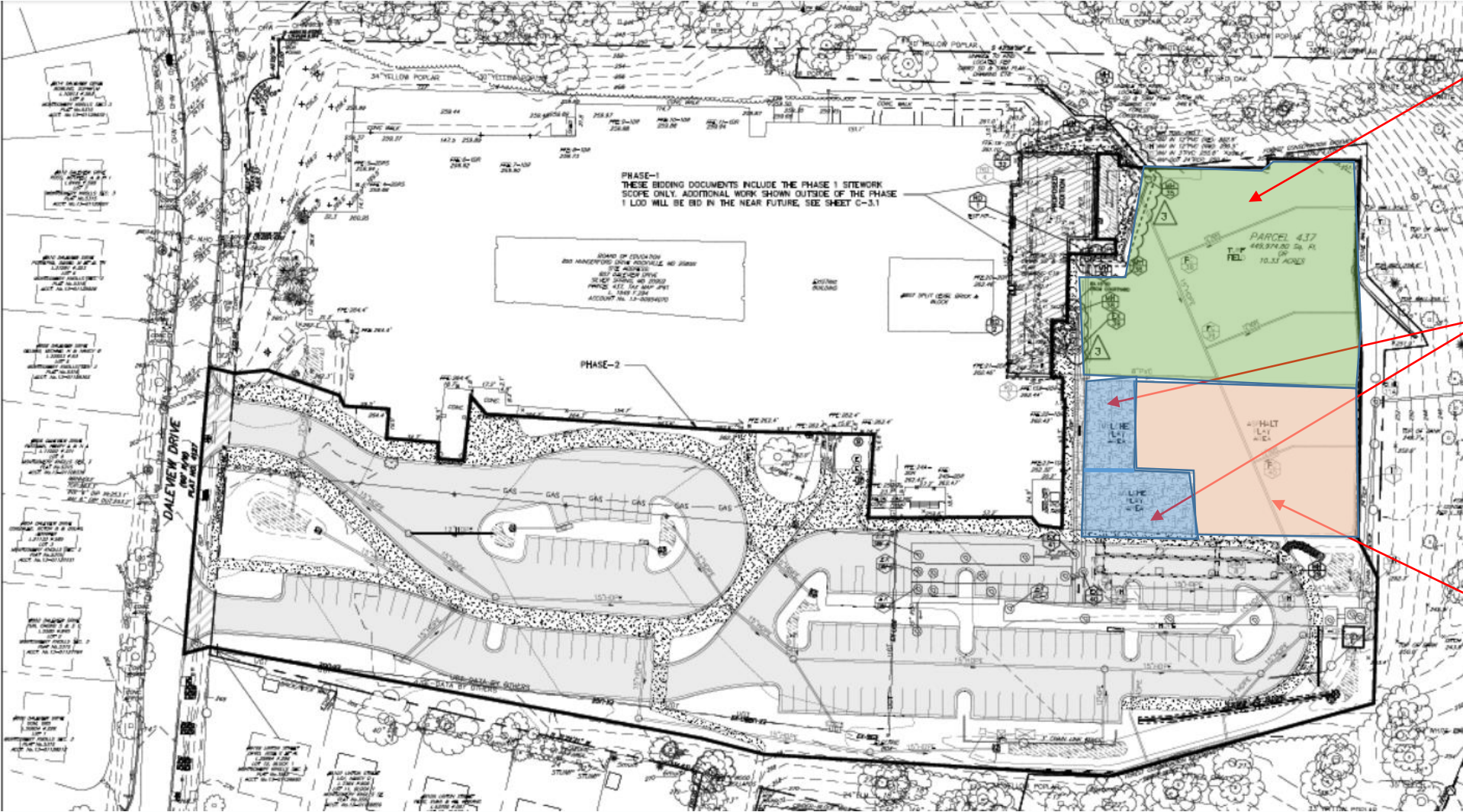
Projections and Available Seats

Schools		Actual	Projections					
		18–19	19–20	20–21	21–22	22–23	23–24	24–25
Elementary Schools								
Forest Knolls ES	Program Capacity	529	529	529	529	529	529	529
	Enrollment	718	729	736	720	733	756	775
	Available Space	-189	-200	-207	-191	-204	-227	-246
Montgomery Knolls ES Grades (K–2)	Program Capacity	537	537	681	681	681	681	681
	Enrollment	490	467	469	472	473	469	468
	Available Space	47	70	212	209	208	212	213
Pine Crest ES Grades (3–5)	Program Capacity	404	404	634	634	634	634	634
	Enrollment	435	449	458	465	473	481	493
	Available Space	-31	-45	176	169	161	153	141
Middle Schools								
Eastern MS	Program Capacity	1012	1012	1012	1012	1012	1012	1012
	Enrollment	970	968	936	965	973	967	960
	Available Space	42	44	76	47	39	45	52
Silver Spring International MS	Program Capacity	1107	1107	1107	1107	1298	1298	1298
	Enrollment	1125	1129	1134	1147	1185	1207	1252
	Available Space	-18	-22	-27	-40	113	91	46

Addition Site Plans



Site Plan Montgomery Knolls ES Addition



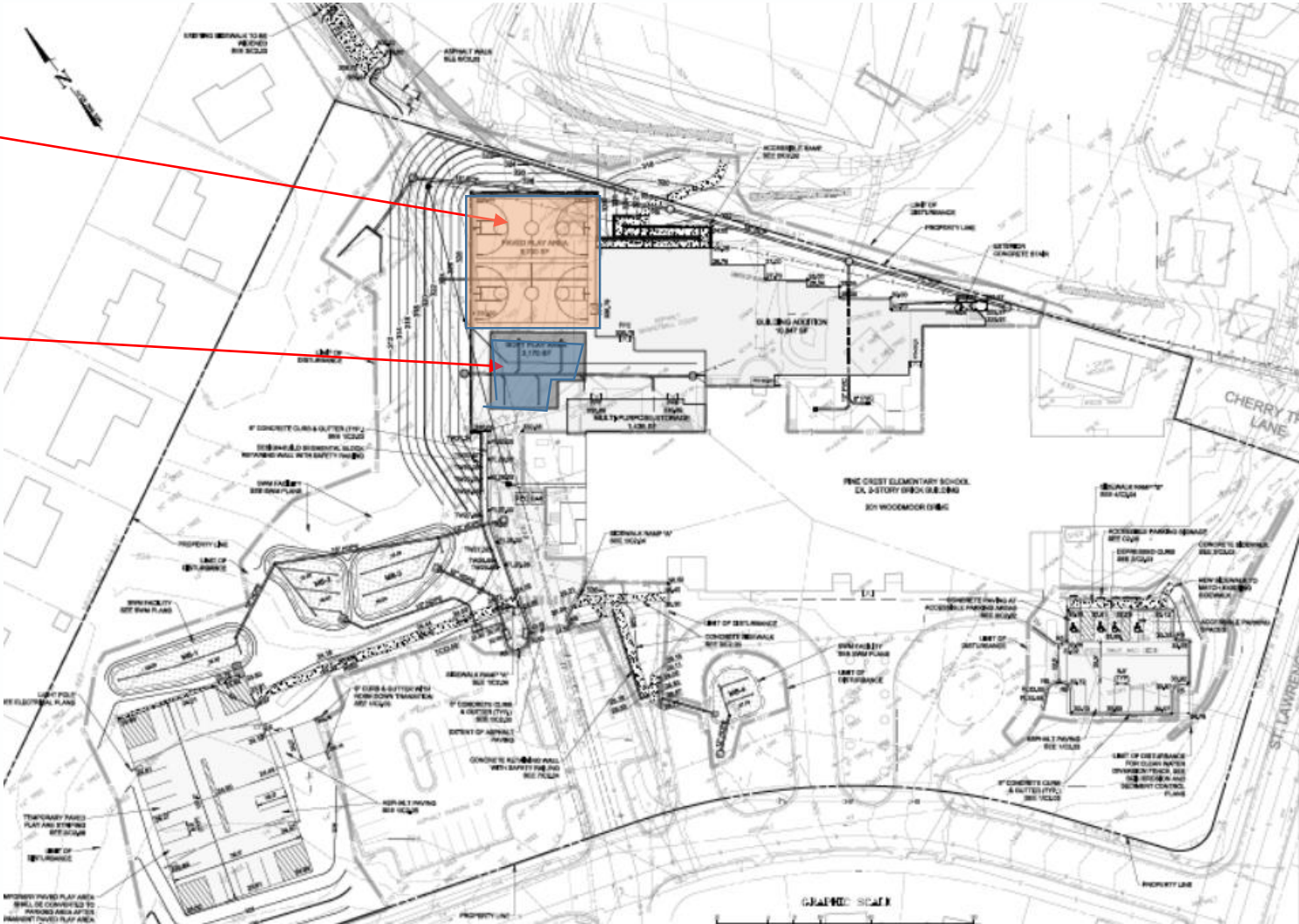
Play field

2 Mulched
Playground
Areas

Hard paved
play area

Site Plan Pine Crest ES Addition

Adjacent county park used by school for play fields



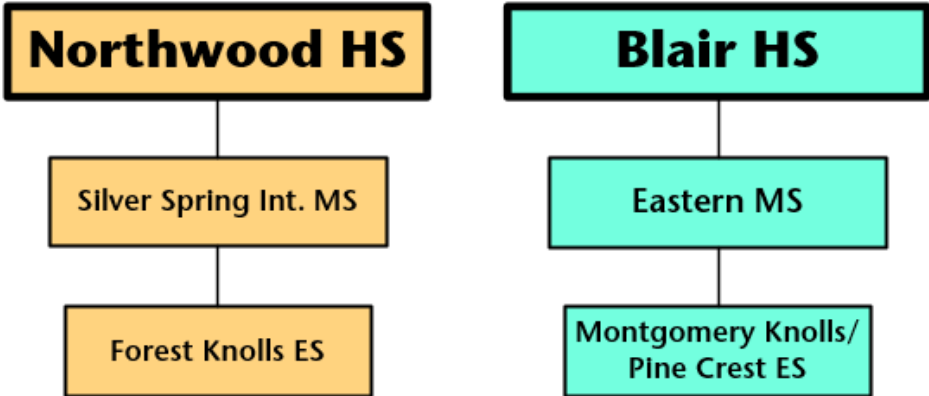
Hard paved play area

Mulched playground area

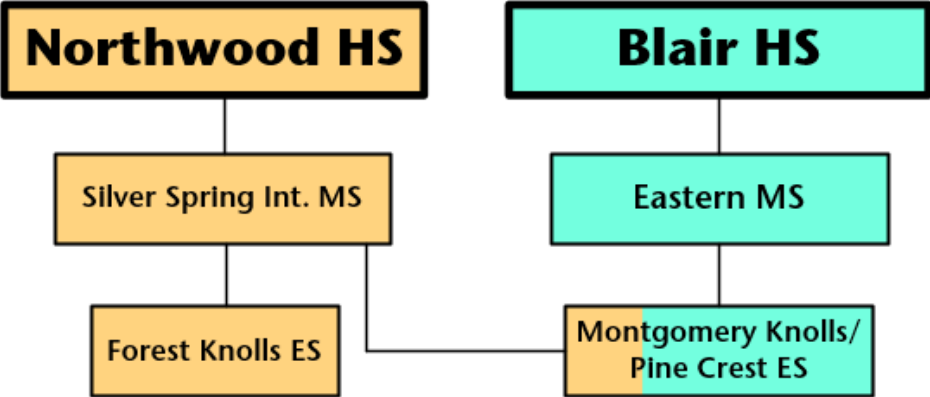
Options



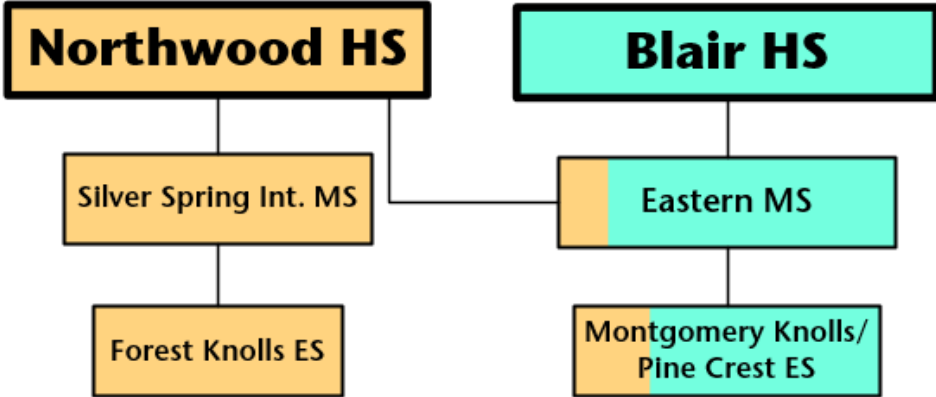
Current Articulations



No Change in MS Assignment

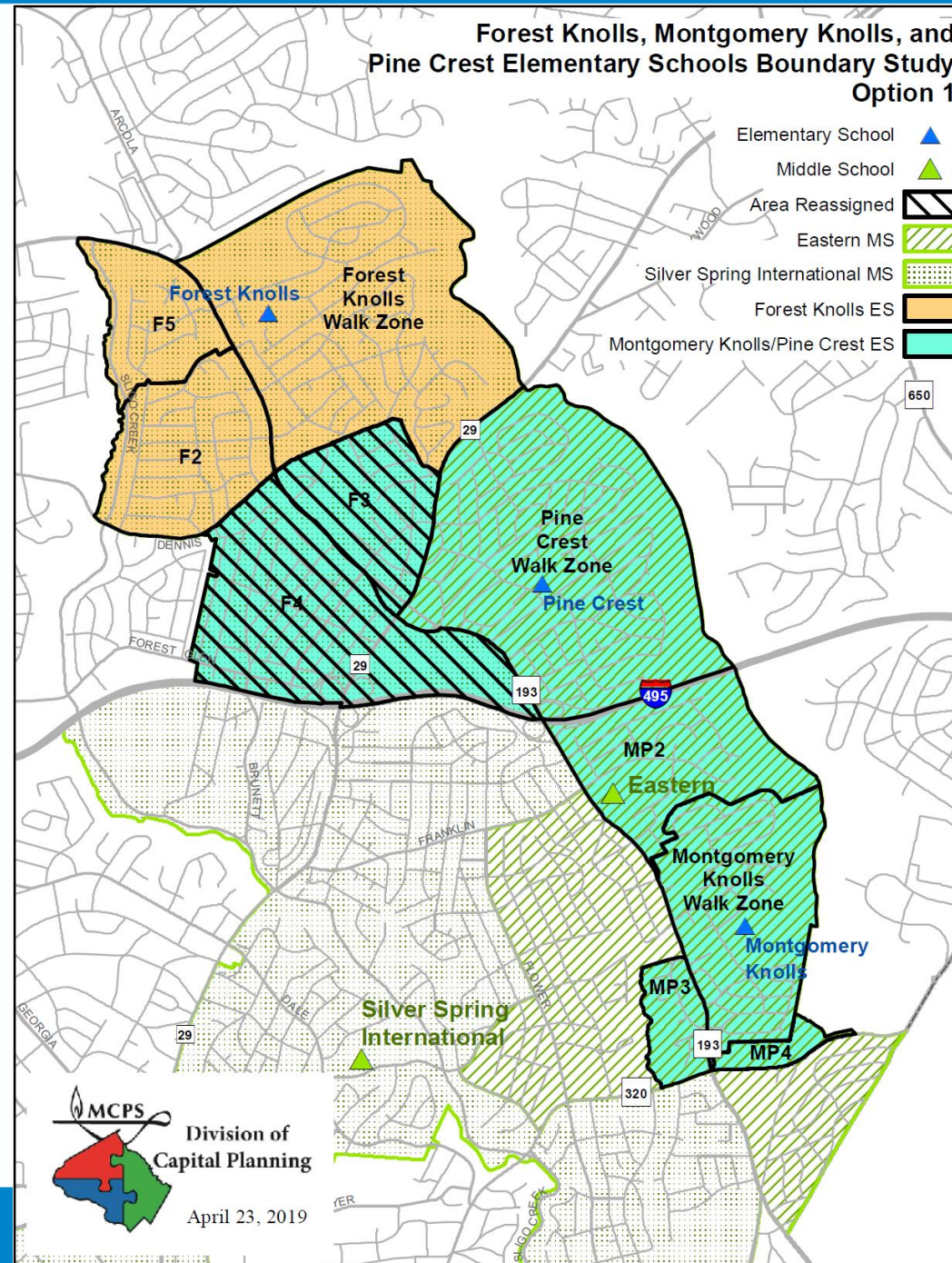


Change in MS Assignment



Option 1

Option 1 Map



Option 1— Reassign Zones F3 and F4

School	Projected Number of Students					2018–19						
						Race/Ethnic Composition						
	2020–21	2021–22	2022–23	2023–24	2024–25	% Afr. Amer.	% Asian	% Hispanic	% White	% 2 or More	% FARMS	% ESOL
Forest Knolls ES												
Maximum Number of Seats= 529												
<i>No Change:</i>												
Number of Students	736	720	733	756	775	14.8%	5.4%	38.7%	33.4%	7.4%	30.1%	19.0%
Percent of Building Occupied	139%	136%	139%	143%	147%							
Available Seats	-207	-191	-204	-227	-246							
<i>With Change:</i>												
Number of Students	588	532	532	557	558	16.6%	5.4%	41.7%	29.1%	7.3%	34.1%	19.4%
Percent of Building Occupied	111%	101%	100%	105%	106%							
Available Seats	-59	-3	-3	-28	-29							
Montgomery Knolls ES												
Maximum Number of Seats= 681												
<i>No Change:</i>												
Number of Students	469	472	473	469	468	26.6%	3.5%	46.6%	17.2%	5.9%	58.8%	42.1%
Percent of Building Occupied	69%	69%	69%	69%	69%							
Available Seats	212	209	208	212	213							
<i>With Change:</i>												
Number of Students	552	573	573	567	565	23.4%	4.1%	42.9%	23.3%	6.2%	52.8%	37.4%
Percent of Building Occupied	81%	84%	84%	83%	83%							
Available Seats	129	108	108	114	116							
Pine Crest ES												
Maximum Number of Seats= 634												
<i>No Change:</i>												
Number of Students	458	465	473	481	493	24.4%	5.7%	41.4%	24.8%	3.7%	47.4%	31.7%
Percent of Building Occupied	72%	73%	75%	76%	78%							
Available Seats	176	169	161	153	141							
<i>With Change:</i>												
Number of Students	524	552	575	583	613	22.5%	5.3%	40.8%	27.0%	4.4%	42.7%	30.5%
Percent of Building Occupied	83%	87%	91%	92%	97%							
Available Seats	110	82	59	51	21							



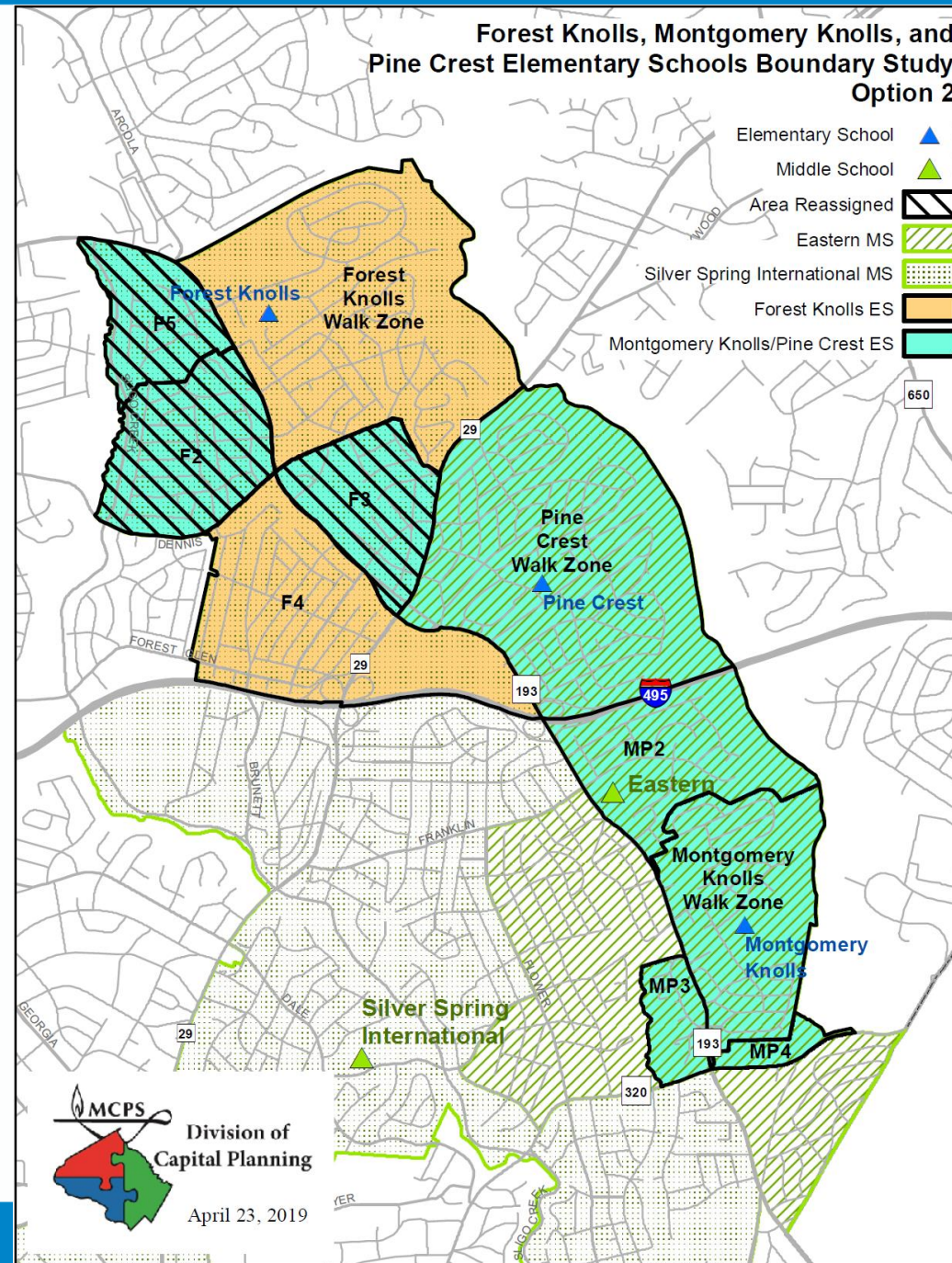
Option 1— Reassign Zones F3 and F4

School	Projected Number of Students					2018–19 Race/Ethnic Composition						
	2020–21	2021–22	2022–23	2023–24	2024–25	% Afr. Amer.	% Asian	% Hispanic	% White	% 2 or More	% FARMS	% ESOL
	Proposed Middle School Boundary Reassignments											
Eastern MS												
Maximum Number of Seats= 1,012												
No Change:												
Number of Students	936	965	973	967	960	19.8%	9.3%	46.7%	20.3%	3.6%	49.8%	17.7%
Percent of Building Occupied	92%	95%	96%	96%	95%							
Available Seats	76	47	39	45	52							
With Change:												
Number of Students	1,014	1,079	1,096	1,100	1,096	19.1%	9.1%	45.9%	21.8%	4.0%	47.6%	16.8%
Percent of Building Occupied	100%	107%	108%	109%	108%							
Available Seats	-2	-67	-84	-88	-84							
Silver Spring International MS												
Maximum Number of Seats= 1,298												
No Change:												
Number of Students	1,134	1,147	1,185	1,207	1,252	21.2%	5.4%	41.5%	26.9%	4.4%	38.3%	14.4%
Percent of Building Occupied	87%	88%	91%	93%	96%							
Available Seats	164	151	113	91	46							
With Change:												
Number of Students	1,056	1,033	1,062	1,074	1,116	22.2%	5.4%	42.2%	26.1%	4.1%	40.0%	15.2%
Percent of Building Occupied	81%	80%	82%	83%	86%							
Available Seats	242	265	236	224	182							

Note: In the 2020–2021 school year, the enrollment projections display reassignments for students in Grades 6 and 7 students from Silver Spring International MS to Easter MS with Grade 8 students grandfathered at Silver Spring International MS. In the 2021–2022 the data displays all Grade 6–8 students reassignments.

Option 2

Option 2 Map



Option 2— Reassign Zones F2, F3, and F5

School	Projected Number of Students					2018-19 Race/Ethnic Composition						
	2020-21	2021-22	2022-23	2023-24	2024-25	% Afr. Amer.	% Asian	% Hispanic	% White	% 2 or More	% FARM S	% ESOL
	Forest Knolls ES											
Maximum Number of Seats= 529												
<u>No Change:</u>												
Number of Students	736	720	733	756	775	14.8%	5.4%	38.7%	33.4%	7.4%	30.1%	19.0%
<i>Percent of Building Occupied</i>	139%	136%	139%	143%	147%							
<i>Available Seats</i>	-207	-191	-204	-227	-246							
<u>With Change:</u>												
Number of Students	569	511	517	540	539	14.6%	6.1%	38.8%	33.2%	7.3%	31.9%	16.9%
<i>Percent of Building Occupied</i>	108%	97%	98%	102%	102%							
<i>Available Seats</i>	-40	18	12	-11	-10							
Montgomery Knolls ES												
Maximum Number of Seats= 681												
<u>No Change:</u>												
Number of Students	469	472	473	469	468	26.6%	3.5%	46.6%	17.2%	5.9%	58.8%	42.1%
<i>Percent of Building Occupied</i>	69%	69%	69%	69%	69%							
<i>Available Seats</i>	212	209	208	212	213							
<u>With Change:</u>												
Number of Students	560	583	578	573	571	24.2%	3.5%	45.1%	20.9%	6.3%	52.5%	39.9%
<i>Percent of Building Occupied</i>	82%	86%	85%	84%	84%							
<i>Available Seats</i>	121	98	104	108	110							
Pine Crest ES												
Maximum Number of Seats= 634												
<u>No Change:</u>												
Number of Students	458	465	473	481	493	24.4%	5.7%	41.4%	24.8%	3.7%	47.4%	31.7%
<i>Percent of Building Occupied</i>	72%	73%	75%	76%	78%							
<i>Available Seats</i>	176	169	161	153	141							
<u>With Change:</u>												
Number of Students	534	563	584	593	626	23.4%	5.3%	41.2%	25.7%	4.3%	44.6%	29.7%
<i>Percent of Building Occupied</i>	84%	89%	92%	94%	99%							
<i>Available Seats</i>	100	71	50	41	8							

School	Projected Number of Students					2018-19 Race/Ethnic Composition						
	2020-21	2021-22	2022-23	2023-24	2024-25	% Afr. Amer.	% Asian	% Hispanic	% White	% 2 or More	% FARMS	% ESOL

Proposed Middle School Boundary Reassignments

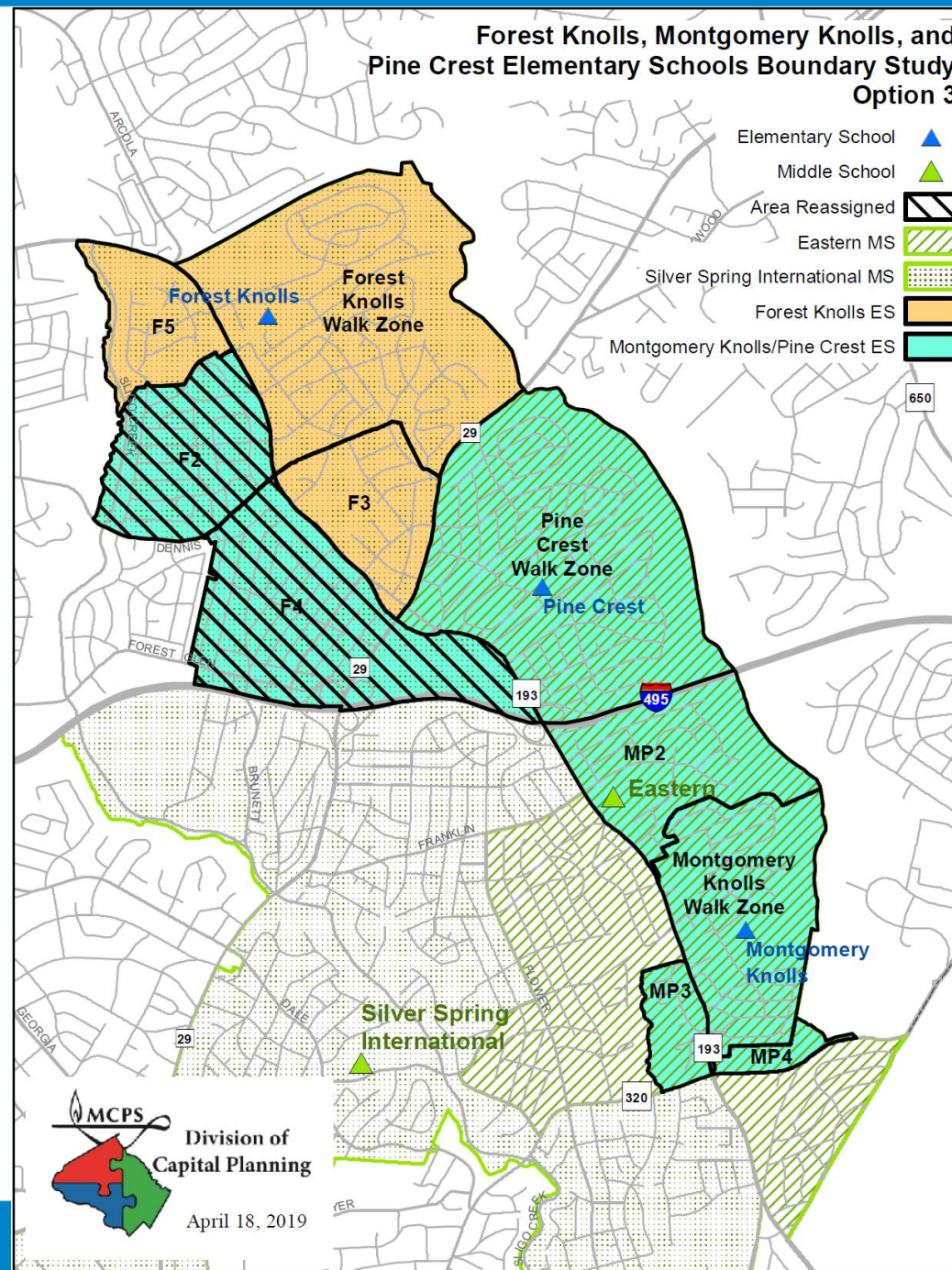
Eastern MS												
Maximum Number of Seats= 1,012												
<u>No Change:</u>												
Number of Students	936	965	973	967	960	19.8%	9.3%	46.7%	20.3%	3.6%	49.8%	17.7%
Percent of Building Occupied	92%	95%	96%	96%	95%							
Available Seats	76	47	39	45	52							
<u>With Change:</u>												
Number of Students	1,016	1,082	1,109	1,113	1,106	19.3%	9.1%	46.8%	21.2%	3.6%	48.2%	16.9%
Percent of Building Occupied	100%	107%	110%	110%	109%							
Available Seats	-4	-70	-97	-101	-94							
Silver Spring International MS												
Maximum Number of Seats= 1,298												
<u>No Change:</u>												
Number of Students	1,134	1,147	1,185	1,207	1,252	21.2%	5.4%	41.5%	26.9%	4.4%	38.3%	14.4%
Percent of Building Occupied	87%	88%	91%	93%	96%							
Available Seats	164	151	113	91	46							
<u>With Change:</u>												
Number of Students	1,054	1,030	1,049	1,061	1,106	22.0%	5.3%	41.3%	26.8%	4.6%	39.3%	15.1%
Percent of Building Occupied	81%	79%	81%	82%	85%							
Available Seats	244	268	249	237	192							

Note: In the 2020-2021 school year, the enrollment projections display reassignments for students in Grades 6 and 7 students from Silver Spring International MS to Easter MS with Grade 8 students grandfathered at Silver Spring International MS. In the 2021-2022 the data displays all Grade 6-8 students reassignments.

Option 2— Reassign Zones F2, F3, and F5

Option 3

Option 3 Map



Option 3— Reassign Zones F2 and F4

School	Projected Number of Students					2018-19 Race/Ethnic Composition						
	2020-21	2021-22	2022-23	2023-24	2024-25	% Afr. Amer.	% Asian	% Hispanic	% White	% 2 or More	% FARMS	% ESOL
	Forest Knolls ES											
Maximum Number of Seats= 529												
<u>No Change:</u>												
Number of Students	736	720	733	756	775	14.8%	5.4%	38.7%	33.4%	7.4%	30.1%	19.0%
Percent of Building Occupied	139%	136%	139%	143%	147%							
Available Seats	-207	-191	-204	-227	-246							
<u>With Change:</u>												
Number of Students	527	460	467	490	493	16.3%	6.0%	40.0%	30.6%	7.1%	32.5%	18.6%
Percent of Building Occupied	100%	87%	88%	93%	93%							
Available Seats	2	69	62	39	36							
Montgomery Knolls ES												
Maximum Number of Seats= 681												
<u>No Change:</u>												
Number of Students	469	472	473	469	468	26.6%	3.5%	46.6%	17.2%	5.9%	58.8%	42.1%
Percent of Building Occupied	69%	69%	69%	69%	69%							
Available Seats	212	209	208	212	213							
<u>With Change:</u>												
Number of Students	585	606	605	599	596	23.4%	3.5%	43.9%	22.9%	6.3%	51.8%	36.9%
Percent of Building Occupied	86%	89%	89%	88%	88%							
Available Seats	96	75	76	82	85							
Pine Crest ES												
Maximum Number of Seats= 634												
<u>No Change:</u>												
Number of Students	458	465	473	481	493	24.4%	5.7%	41.4%	24.8%	3.7%	47.4%	31.7%
Percent of Building Occupied	72%	73%	75%	76%	78%							
Available Seats	176	169	161	153	141							
<u>With Change:</u>												
Number of Students	551	591	607	617	647	22.0%	5.6%	41.1%	26.7%	4.7%	43.2%	29.7%
Percent of Building Occupied	87%	93%	96%	97%	102%							
Available Seats	83	43	27	17	-13							

Option 3— Reassign Zones F2 and F4

School	Projected Number of Students					2018-19 Race/Ethnic Composition						
	2020-21	2021-22	2022-23	2023-24	2024-25	% Afr. Amer.	% Asian	% Hispanic	% White	% 2 or More	% FARMs	% ESOL

Proposed Middle School Boundary Reassignments

Eastern MS												
Maximum Number of Seats= 1,012												
<u>No Change:</u>												
Number of Students	936	965	973	967	960	19.8%	9.3%	46.7%	20.3%	3.6%	49.5%	17.7%
Percent of Building Occupied	92%	95%	96%	96%	95%							
Available Seats	76	47	39	45	52							
<u>With Change:</u>												
Number of Students	1,008	1,079	1,097	1,102	1,087	19.5%	9.1%	46.2%	21.5%	3.7%	47.4%	16.6%
Percent of Building Occupied	100%	107%	108%	109%	107%							
Available Seats	4	-67	-85	-90	-75							
Silver Spring International MS												
Maximum Number of Seats= 1,298												
<u>No Change:</u>												
Number of Students	1,134	1,147	1,185	1,207	1,252	21.2%	5.4%	41.5%	26.9%	4.4%	38.3%	14.4%
Percent of Building Occupied	87%	88%	91%	93%	96%							
Available Seats	164	151	113	91	46							
<u>With Change:</u>												
Number of Students	1,062	1,033	1,061	1,072	1,125	21.9%	5.3%	41.9%	26.6%	4.4%	40.0%	15.4%
Percent of Building Occupied	82%	80%	82%	83%	87%							
Available Seats	236	265	237	226	173							

Note: In the 2020-2021 school year, the enrollment projections display reassignments for students in Grades 6 and 7 students from Silver Spring International MS to Easter MS with Grade 8 students grandfathered at Silver Spring International MS. In the 2021-2022 the data displays all Grade 6-8 students reassignments.

Next Steps

- Evaluation Forms for Tonight's Meeting (Pink Sheets)
- Stakeholder Survey
 - Will be available on the Division of Capital Planning website later this week
- Next Round of Meetings:
 - Monday, May 20, 2019—Montgomery Knolls ES
 - Tuesday, May 21, 2019—Forest Knolls ES

Website

- <https://www.montgomeryschoolsmd.org/departments/planning/DownCountyESBoundaryStudy.aspx>
- boe@mcpsmd.org