

Superintendent's Recommendation for the Highland Elementary School Service Area Boundary Study

February 15, 2017

Executive Summary

Following a request from members of the Highland Elementary School Parent Teacher Association (PTA), the superintendent of schools convened a Boundary Advisory Committee (Committee) to solicit input on the possible reassignment of a portion of the Highland Elementary School service area from Sligo Middle School to Newport Mill Middle School. On February 8, 2017, the Committee submitted its report, which contained Committee member evaluations of the possible reassignment and PTA position papers from Highland Elementary School and Newport Mill and Sligo middle schools.

After careful consideration of the community input, enrollment projections, and impact on the demographics, I recommend that the area of Highland Elementary School currently assigned to Sligo Middle School be reassigned to Newport Mill Middle School beginning with Grade 6 students in the 2017–2018 school year. The reassignment would continue with Grades 6 and 7 in the 2018–2019 school year with complete implementation of Grades 6–8 students in the 2019–2020 school year.

Background

On November 21, 2016, the Board of Education charged the superintendent of schools to solicit input from affected stakeholders regarding the middle school reassignment of the portion of the Highland Elementary School service area that attends Sligo Middle School, following a request by members of the Highland Elementary School PTA. The superintendent of schools formed a Boundary Advisory Committee to solicit stakeholder input on the possible reassignment of this service area from Sligo Middle School to Newport Mill Middle School, which is geographically closer to the neighborhood and where the remainder of Highland Elementary School students attend middle school.

The scope of the study included the neighborhood in the Highland Elementary School service area bounded by Dalewood Drive, Goodhill Road, Valleywood Drive, and Veirs Mill Road. There are approximately 550 homes composed of single family and duplex homes in this area, and approximately 105 middle school students reside in this area. The study was limited to boundary options for Sligo and Newport Mill middle schools. No other changes in school assignments were considered in this study.

Representatives from Highland Elementary School and Newport Mill and Sligo middle schools and an Albert Einstein High School Cluster coordinator served on the Committee. The Latino Student Achievement Action Group was consulted during the process to develop a community outreach plan that would ensure that all stakeholders groups were heard.

The Committee met on December 19, 2016, and January 23, 2017, at the Highland Elementary School library media center. Two public information meetings were held, in English and Spanish, for the community at large on January 31, 2017, in the Highland Elementary School multi-purpose room. At these meetings, Montgomery County Public Schools (MCPS) staff presented the two boundary options and explained the Committee's process. Attendees of the public information meetings were invited to complete input forms, in English and Spanish, stating their views on the boundary options. Additionally, a Google input form, in English and Spanish, was available on the Division of Long-range Planning's web page to provide community members another method to provide their view on the boundary options. A total of 65 feedback forms were submitted and summarized as part of the process.

Review of the Issues

The boundary study convened as a result of a request from the Highland Elementary School PTA. The issue was discussed at several PTA meetings beginning in spring 2016. As part of the Committee work, Board of Education Policy FAA, *Long-range Educational Facilities Planning*, and MCPS Regulation FAA-RA, *Long-range Educational Facilities Planning*, were reviewed to develop criteria to evaluate the option. MCPS Regulation FAA-RA specifies the following four factors to be considered in developing school boundaries:

- Facility Utilization
- Demographic Characteristics of Student Population
- Geographic Proximity of Communities to Schools
- Stability of School Assignments over Time

While all of the four factors are considered in my analysis and recommendation, the predominant reason for the request to study the proposed boundary change was the geographic proximity of the area to Newport Mill Middle School. As a result, the majority of the criteria developed by the Committee was related to the geographic proximity of communities to schools. These criteria include:

- Minimize island assignments and create contiguous boundaries;
- Maintain student relationships by maximizing opportunities for students to remain together through high school;
- Motivate students by keeping friends together;
- Minimize the distance to assigned middle schools;
- Minimize the amount of transportation and time that students travel for school, including after-school activities;
- Make students more independent through geographic proximity to their schools; and
- Enable parental access to schools to promote participation, community cohesion, and facilitate emergency access.

The desire to create two schools with similar enrollment numbers and address the facility utilization was included in two of the criteria to evaluate the boundary options.

- Balance the number of students between the two middle schools for the next five years.
- Ensure that both schools retain an adequate number of students to provide the staffing required to address the needs of the students.

Finally, the committee included demographics and program offerings as criteria to evaluate the option.

- Promote comparable race, ethnic, and socioeconomic demographics at schools.
- Consider the program offerings at both middle schools.

The Committee discussed issues related to all of these criteria, including resource allocations for the two schools as enrollment numbers, socioeconomic characteristics, and program offerings might be impacted by a change in boundaries.

Superintendent's Recommendation

I commend the work of the Highland Elementary School Service Area Boundary Advisory Committee. I have carefully considered all of the input received, including the Committee report, the Committee member evaluations, the position papers, and the community feedback. I also considered the guidance provided by Board of Education Policy FAA, *Long-range Educational Facilities Planning*, and MCPS Regulation FAA-RA, *Long-range Educational Facilities Planning*, to develop my recommendation.

Based on this review, I recommend that the area of Highland Elementary School currently assigned to Sligo Middle School be reassigned to Newport Mill Middle School. The reassignment would begin with Grade 6 students in the 2017–2018 school year, followed by Grades 6–7 students in the 2018–2019 school year, with full implementation of Grades 6–8 students in the 2019–2020 school year.

I agree with the analysis and issues that were raised by the Highland Elementary School PTA and community, as well as the other Committee members. The following summarizes my rationale for the recommendation.

Facility Utilization

MCPS Regulation FAA-RA states that school boundary assignments should result in facility utilization rates in the 80 to 100 percent efficient range whenever possible. In addition, the regulation states a desired range of enrollment for middle schools of 750 to 1,200 students.

As the following two tables indicate, the utilization rate for Sligo Middle School is projected to exceed 100 percent during the six-year planning period, while the utilization rate for Newport Mill Middle School is projected to be less than 80 percent for the first two years of the six-year planning period, if there is no boundary change. In addition, the projected

enrollment for Newport Mill Middle School is less than the desired range of enrollment throughout the six-year planning period, ranging from 629 students in the 2017–2018 school year to 689 students in the 2022–2023 school year.

Sligo MS	2017–18	2018–19	2019–20	2020–21	2021–22	2022–23
No Change						
Number of Students	808	801	856	919	985	954
<i>% of Building Occupied</i>	88%	88%	94%	100%	108%	104%
Available Seats	107	114	59	-4	-70	-39
With Change						
Number of Students	738	696	751	814	880	849
<i>% of Building Occupied</i>	81%	76%	82%	89%	96%	93%
Available Seats	177	219	164	101	35	66

Newport Mill MS	2017–18	2018–19	2019–20	2020–21	2021–22	2022–23
No Change						
Number of Students	629	663	677	668	699	689
<i>% of Building Occupied</i>	75%	79%	81%	80%	84%	82%
Available Seats	208	174	160	169	138	148
With Change						
Number of Students	699	768	782	773	804	794
<i>% of Building Occupied</i>	84%	92%	93%	92%	96%	95%
Available Seats	138	69	55	64	33	43

If the boundary change were to be implemented, the utilization rate at the two schools would fall within the 80 to 100 percent utilization rate after full implementation of the boundary change in the 2019–2020 school year. Furthermore, the enrollment at Newport Mill Middle School would increase from 782 to 794 students from the 2019–2020 through the 2022–2023 school years, increasing the number of students to the desired range of enrollment for middle schools. From the perspective of the facility utilization and enrollment range, the boundary change would benefit both schools by bringing the utilization rate and enrollment range within the desired range for the six-year planning period.

Demographic Characteristics of Student Population

The following table illustrates the change in demographics if the boundary change were to occur in the 2016–2017 school year.

School	% Afr. Amer.	% Asian	% Hispanic	% White	% 2 or More	% FARMS	% ESOL
No Change							
Sligo MS	21.6%	7.6%	44.1%	23.4%	<5.0%	43.8%	11.6%
With Change							
Sligo MS	22.8%	8.2%	37.7%	27.5%	<5.0%	38.7%	9.8%
No Change							
Newport Mill MS	15.9%	8.6%	48.5%	22.2%	<5.0%	45.9%	7.3%
With Change							
Newport Mill MS	15.6%	7.9%	53.3%	19.1%	<5.0%	50.3%	10.5 %

In reviewing the demographics of the two schools, I compared the changes in the racial and ethnic percentages for both schools as well as the Free and Reduced-Price Meals System (FARMS) and English for Speakers of Other Languages (ESOL) percentages for the two schools. The proposed boundary change would have little impact on the African American, Asian, two or more races, and ESOL populations. There would be greater changes in the Hispanic, White, and FARMS populations, and the difference between the two schools would be greater in these groups with the boundary change than without the boundary change. It is important to note that at each individual school the changes are within approximately five percentage points. Neither the Committee nor I viewed these five percentage point changes as significant to the demographics of the individual schools. Therefore, I believe that the factor of promoting a diverse student body in each school is met by my recommendation.

Some questions were raised about the resources and technology that are provided to schools as the population of a school changes. Consistent with our approach to budgeting for schools, we will provide equitable resources to both schools.

Geographic Proximity of Communities to Schools

MCPS Regulation FAA-RA states that “boundary plans should give consideration to the creation of service areas that are, as much as practical, made up of contiguous communities surrounding the school. Walking access to the school be maximized and transportation distances minimized when other factors do not require otherwise.” Currently, this area is considered an island assignment to Sligo Middle School as it is not contiguous to the Sligo Middle School service area and the students are bused to the school. Rather, as the map included in Attachment A displays, this area of Highland Elementary School is contiguous to the Newport Mill Middle School service area and students could walk to Newport Mill Middle School if they were reassigned.

Therefore, moving forward with the boundary change would address the issues raised by the community to reduce travel time on the bus, eliminate the island assignment, and create contiguous communities. In addition, the boundary assignment would increase parental engagement and participation to school and facilitate access for parents to pick up their students in the event of an emergency.

Although there is overwhelming community support for the boundary change, concerns were raised by the parents living in this area about the safety of their students crossing Veirs Mill Road at Claridge Road. Safety of our students is a top priority for MCPS. Staff in the Department of Transportation have assessed the intersection and believe it warrants review for assignment of a crossing guard. If the boundary change is approved by the Board of Education, MCPS Department of Transportation will collaborate with the Montgomery County Department of Police to ensure the safety of the students in this neighborhood.

Stability of School Assignments over Time

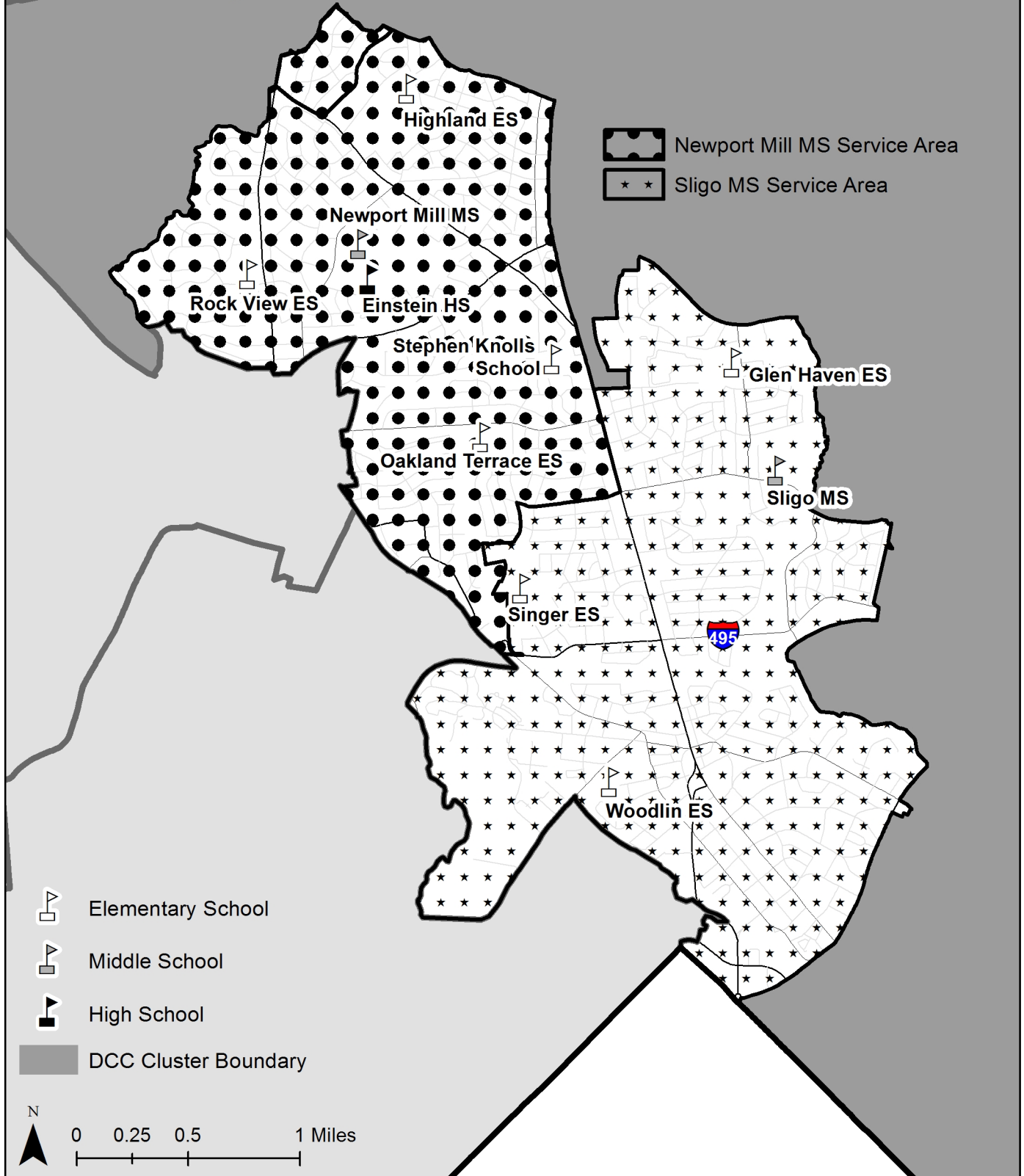
The last boundary change to occur for this area was in 2001 when Newport Middle School opened. As this change was more than 15 years ago, students affected at that time will have matriculated through the middle school years and would not be affected by a boundary change at this time.

An important consideration is the current split articulation from Highland Elementary School to middle school for the Grade 5 students. The boundary change would eliminate the split articulation from elementary school to middle school and maintain student relationships by maximizing opportunities for students to remain together through high school. This change would positively affect the stability of school assignment, a factor in Regulation FAA-RA and one of the criterion supported by the Committee.

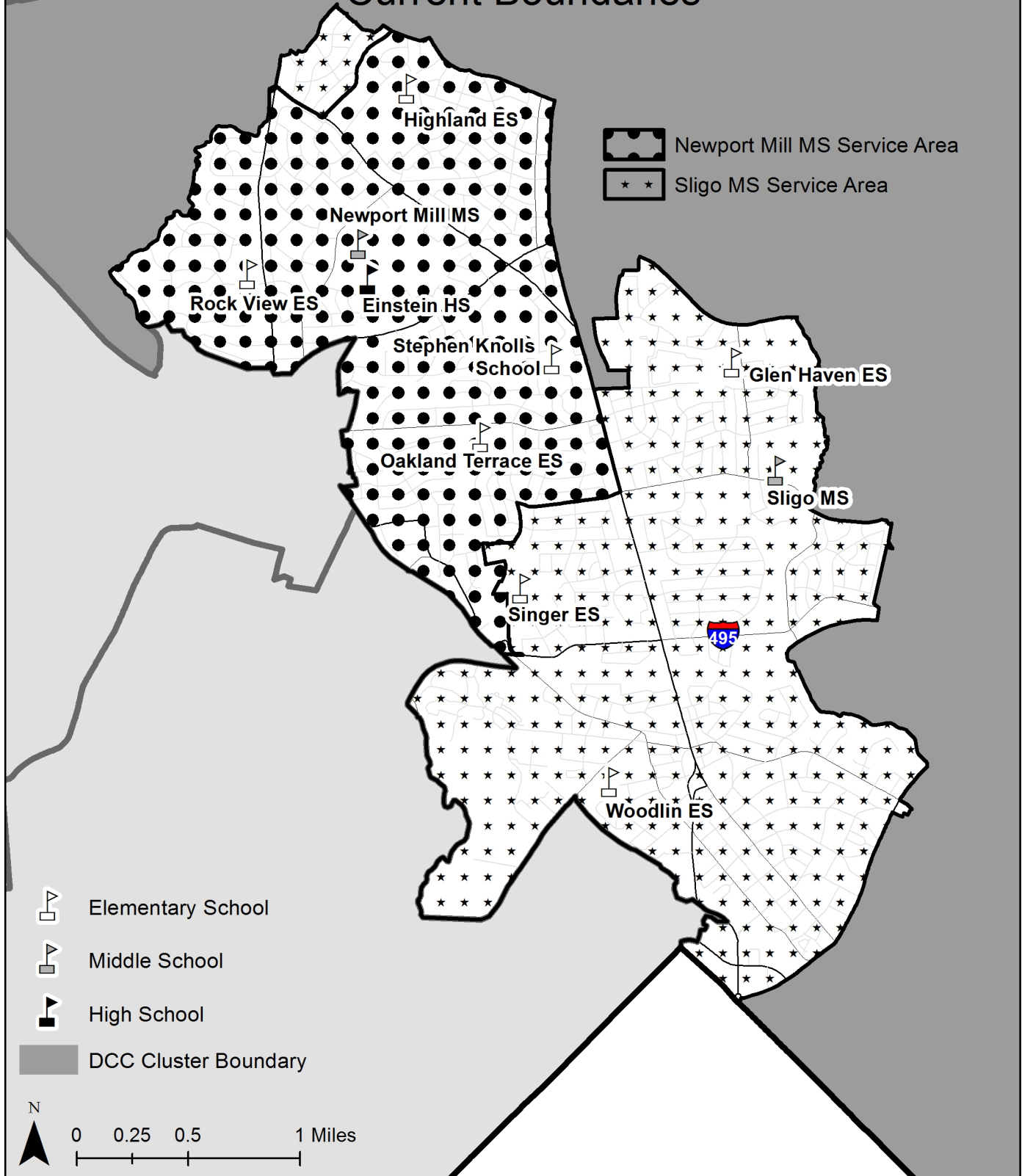
Summary

My recommendation to reassign the portion of Highland Elementary School that currently attends Sligo Middle School to Newport Mill Middle School positively impacts three of the four factors outlined in MCPS Regulation FAA-RA, and is consistent with the fourth. First, it addresses the overutilization at Sligo Middle School while increasing the student enrollment at Newport Mill Middle School to the desired range of enrollment, bringing both schools to the desired ranges of enrollment and utilization. Second, my recommendation creates contiguous middle school patterns, eliminates the island assignment, and promotes walking to school. In addition, geographic proximity will promote increased access and parental engagement for the students and parents in this neighborhood. Third, stability of school assignment is supported by eliminating the split articulation that currently exists. Finally, my recommendation is consistent with the consideration of promoting a diverse student body at each of the schools. The following page displays a map of the recommendation.

Highland ES Area Boundary Study February 15, 2017 Superintendent's Recommendation



Highland ES Area Boundary Study February 15, 2017 Current Boundaries



Highland Elementary School Service Area Boundary Advisory Committee Report

February 8, 2017

Background

On November 21, 2016, the Board of Education charged the superintendent of schools to solicit input from affected stakeholders regarding the possible reassignment of the portion of the Highland Elementary School service area that attends Sligo Middle School, following a request by members of the Highland Elementary School Parent Teacher Association (PTA). The superintendent of schools formed a Boundary Advisory Committee to solicit stakeholder input on the possible reassignment of this service area from Sligo Middle School to Newport Mill Middle School, which is geographically closer to the neighborhood and where the remainder of Highland Elementary School students attend middle school.

Scope of the Boundary Study

The scope of the study included only the neighborhood in the Highland Elementary School service area bounded by Dalewood Drive, Goodhill Road, Valleywood Drive, and Veirs Mill Road. The study was limited to boundary options for Sligo and Newport Mill middle schools. No other changes in school assignments were considered in this study.

Boundary Advisory Committee Representatives

Representatives from Highland Elementary School, Newport Mill and Sligo middle schools, and an Albert Einstein High School cluster coordinator served on the Boundary Advisory Committee. Boundary Advisory Committee representatives served as liaisons to their communities and received feedback that they shared with other committee members. See Appendix A for the names of representatives and Appendix B for the superintendent of school's charge to the Boundary Advisory Committee.

Meetings

The Boundary Advisory Committee met on December 19, 2016, and January 23, 2017, at the Highland Elementary School library media center. All committee materials were posted on the Montgomery County Public Schools (MCPS) website at the following link:

<http://www.montgomeryschoolsmd.org/departments/planning/highlandes.aspx>

Two Public Information meetings were held, in English and Spanish, for the community at large on January 31, 2017, in the Highland Elementary School multi-purpose room. At these meetings, MCPS staff presented the two boundary options and explained the Boundary Advisory Committee's process. Attendees of the Public Information meetings were invited to complete input forms stating their views on the boundary options. Additionally, a Google Input form was available on the Division of Long-range Planning's (DLRP) website to give community members another method to provide their view on the boundary options. A summary of the input received is attached as Appendix F.

Committee Criteria

At the first meeting of the Boundary Advisory Committee on December 19, 2016, committee members developed 11 criteria for evaluation of the two boundary options. These criteria are in accordance with guidelines presented in Board of Education Policy FAA, *Long-range Educational Facilities Planning*, and MCPS Regulation FAA-RA, *Long-range Educational Facilities Planning*. MCPS Regulation FAA-RA specifies the following four factors to be considered in developing school boundaries:

- Facility Utilization
- Demographic Characteristics of Student Population
- Geographic Proximity of Communities to Schools
- Stability of School Assignments over Time

These factors were explained to the committee and helped guide the development of the committee criteria. The criteria were not developed in any type of priority order, and the listing below should not be interpreted as expressing a priority order.

Boundary Advisory Committee Criteria

- Minimize island assignments and create contiguous boundaries
- Maintain student relationships by maximizing opportunities for students to remain together through high school
- Motivate students by keeping friends together
- Balance the number of students between the two middle schools for the next five years
- Minimize the distance to assigned middle schools
- Minimize the amount of transportation and time that students travel for school, including after-school activities
- Consider the program offerings at both middle schools
- Make students more independent through geographic proximity to their schools
- Ensure that both schools retain an adequate number of students to provide the staffing required to address the needs of the students
- Promote comparable race, ethnic, and socioeconomic demographics at schools
- Enable parental access to schools to promote participation, community cohesion, and facilitate emergency access

Boundary Options Reviewed

Mr. Joel A. Gallihue, director, and Ms. Deborah S. Szyfer, senior planner, from DLRP, Department of Facilities Management (DFM), facilitated the Boundary Advisory Committee meetings and prepared the two boundary options for the committee to review.

Option #1 maintains the current middle school assignments of Highland Elementary School students, splitting the Highland service area between Newport Mill and Sligo middle schools.

Option #2 reassigns the portion of the Highland Elementary School service area that currently attends Sligo Middle School, to Newport Mill Middle School. In the 2017–2018 school year, Grades 6–7 students would move from Sligo Middle School to Newport Mill Middle School. (Based upon feedback from the committee, there is a preference for phased implementation by grade.) In the 2018–2019 school year, all Grades 6–8 students would attend Newport Mill Middle School.

See Appendix C for maps and data on the two boundary options.

Boundary Advisory Committee Option, Evaluations and Implementation Issues

The Boundary Advisory Committee members submitted their evaluations of the two boundary options at their January 23, 2017, meeting. Appendix D presents the evaluations. PTA representatives were given the opportunity to submit position papers. Position papers are presented in Appendix E. If the boundary change (Option #2) is adopted by the Board of Education, the committee requests that the boundary change be implemented, beginning with Grade 6 only in the 2017–2018 school year, followed by Grades 6 and 7 in the 2018–2019 school year, and Grades 6–8 in the 2019–2020 school year. This phased implementation will not incur an increase in transportation costs as the area that would be reassigned can walk to Newport Mill Middle School.

Addendum

After the committee meetings, an error was identified in the Free and Reduced-price Meals System (FARMS) participation rates data for Sligo and Newport Mill middle schools that was presented to the committee members during the process. The committee members were notified of the revised data and given the opportunity to meet again to review the revised data. Based on the revised data, the committee decided it did not need to meet as a group for a third meeting because the revised data showed a smaller change in the FARMS rate for Newport Mill Middle School than had been presented during the process. The revised data is presented in the Addendum to the paper. It is important to note that the evaluation forms and position papers are based on the data presented in Appendix C.

Appendices

Appendix A	Committee Roster
Appendix B	Committee Charge
Appendix C	Option
Appendix D	Evaluation Forms
Appendix E	Position Papers
Appendix F	Community Input
ADDENDUM	Revised Option 2-2-2017

Appendix A

Committee Roster

**Highland Elementary School Area Assignment
Boundary Advisory Committee Roster**

Pat	Coleman	Sligo Middle School
Rachel	Goldberg	Highland Elementary School
Drina	Henry	Sligo Middle School
Meg	Kabat	Newport Millde School
Sara	Rivera	Newport Middle School
Walter	Sanchez	Highland Elementary School
Laura	Stewart	Albert Einstein Cluster Coordinator

Appendix B

Committee Charge

Highland Elementary School Area Boundary Advisory Committee Charge

12/19/2016

Boundary Advisory Committee

The Boundary Advisory Committee is an advisory body to the superintendent of schools and is not a decision making body.

Boundary Advisory Committee Responsibilities

Consistent with Montgomery County Public Schools Regulation FAA-RA, *Long-range Educational Facilities Planning* the superintendent of schools has formed a boundary advisory committee to solicit community input to obtain viewpoints of affected stakeholders regarding the possibility to reassign the area of Highland Elementary School that is currently assigned to Sligo Middle School to Newport Mill Middle School. The scope of the area includes the neighborhood bounded by Dalewood Drive, Goodhill Road, Valleywood Drive, and Veirs Mill Road. The scope of the process is limited to boundary options for the two middle schools. No elementary school or high school boundaries will change as a result of this process.

Boundary Advisory Committee members will develop criteria that will be used by committee members to evaluate this option. Committee members will serve as liaisons to the communities they represent. During the process committee members will meet with their communities to share options under review and to obtain feedback on these options. Committee members will share community feedback during committee meetings.

At the conclusion of the process, a Boundary Advisory Committee report will be sent to the superintendent of schools and Board of Education. The report will provide a summary of the process, the committee criteria, any implementation issues, the boundary options that were developed, and committee member evaluations of the options. In addition, position papers from organizations that are represented on the committee may be submitted for inclusion in the report, if desired.

Facilitation of the Boundary Advisory Committee Process

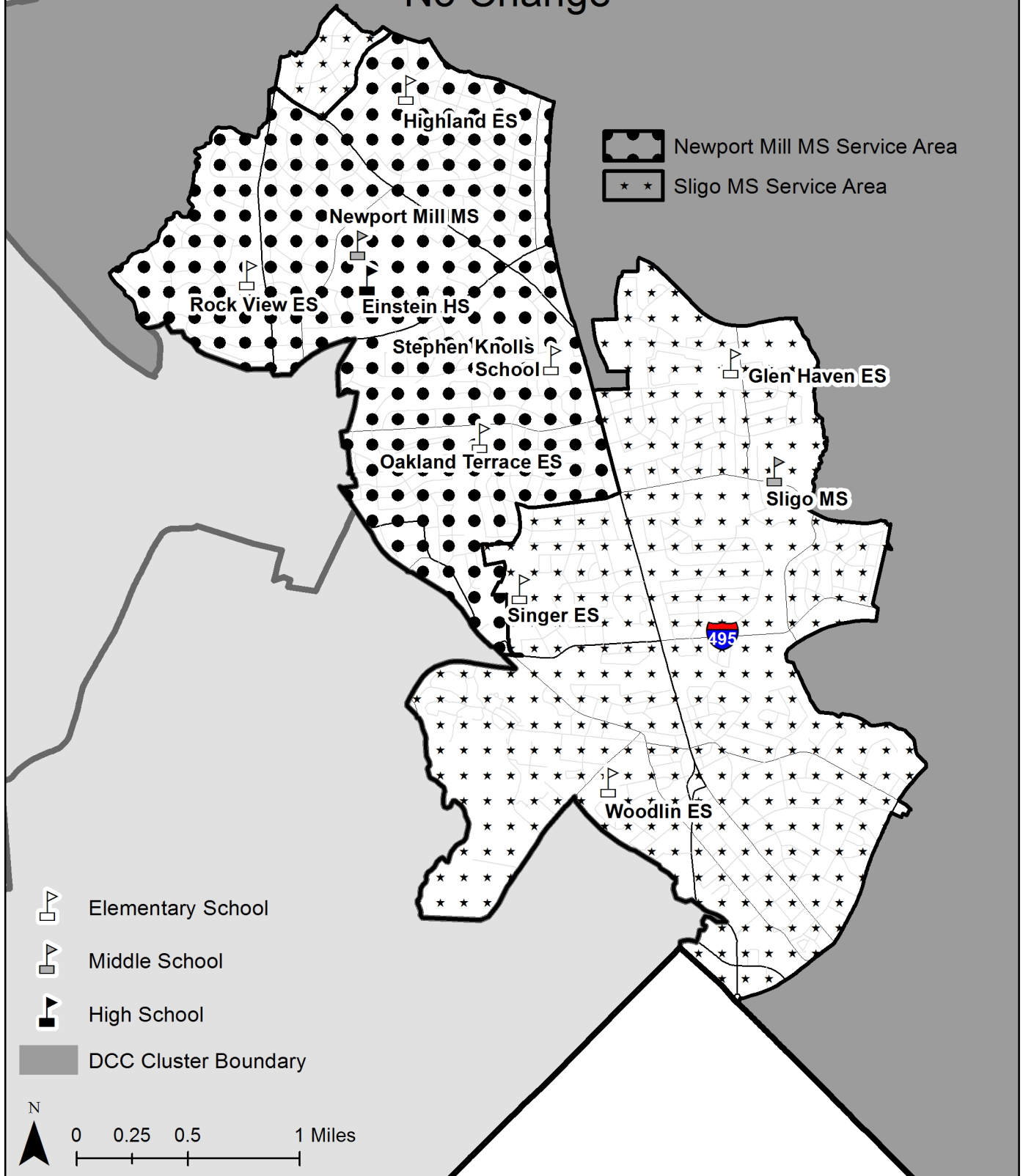
Staff from the Montgomery County Public Schools (MCPS) Division of Long-range Planning will facilitate the process over a period of two meetings from December 2016 through January 2017. Staff will provide information requested by the Boundary Advisory Committee, and, as necessary, invite other MCPS staff to meetings to address questions. All Boundary Advisory Committee materials will be posted on the Division of Long-range Planning web site at:

<http://www.montgomeryschoolsmd.org/departments/planning/highlandes.aspx>

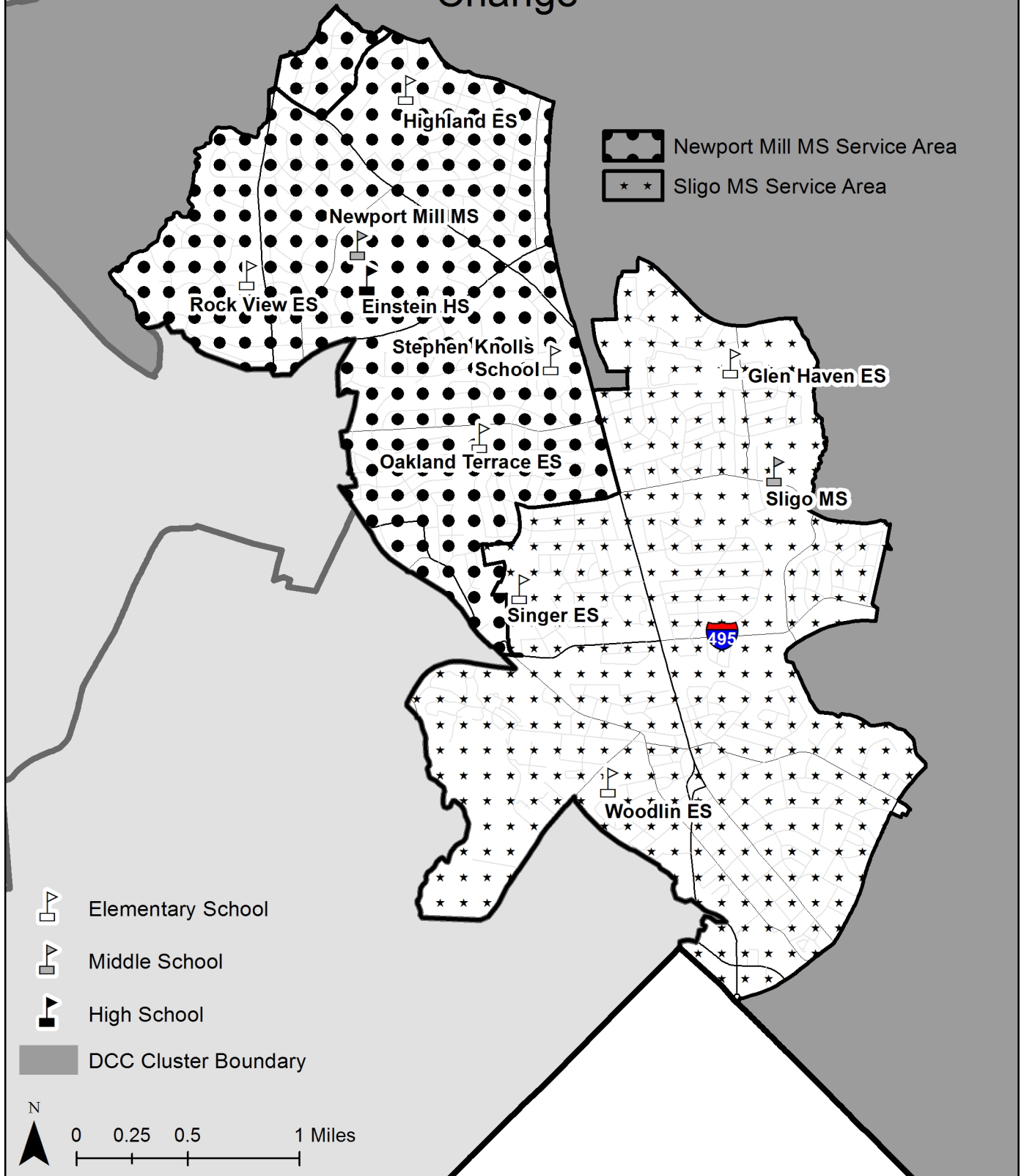
Appendix C

Option

Highland ES Area Boundary Study December 19, 2016 No Change



Highland ES Area Boundary Study December 19, 2016 Change



Highland Elementary School Area Boundary Advisory Committee

12/19/2016 (Revised)

Move middle school students who live in the Highland Elementary School area from Sligo Middle School to Newport Middle School.

School	Projected Number of Students						2016–2017 Race/Ethnic Composition							% FARMs	% ESOL
	2017–2018	2018–2019	2019–2020	2020–2021	2021–2022	2022–2023	% Afr. Amer.	% Asian	% Hispanic	% White	% 2 or More				
Sligo MS															
Maximum Number of Seats = 915															
<u>No Change:</u>															
Number of Students	808	801	856	919	985	954									
Percent of Building Occupied	88%	88%	94%	100%	108%	104%	21.6%	7.6%	44.1%	23.4%	<5.0%	39.3%	11.4%		
Available Seats	107	114	59	-4	-70	-39									
<u>With Change:</u>															
Number of Students	738	696	751	814	880	849									
Percent of Building Occupied	81%	76%	82%	89%	96%	93%	22.8%	8.2%	37.7%	27.5%	<5.0%	33.5%	9.7%		
Available Seats	177	219	164	101	35	66									
Newport Mill MS															
Maximum Number of Seats= 837															
<u>No Change:</u>															
Number of Students	629	663	677	668	699	689									
Percent of Building Occupied	75%	79%	81%	80%	84%	82%	15.9%	8.6%	48.5%	22.2%	<5.0%	41.4%	6.4%		
Available Seats	208	174	160	169	138	148									
<u>With Change:</u>															
Number of Students	699	768	782	773	804	794									
Percent of Building Occupied	84%	92%	93%	92%	96%	95%	15.6%	7.9%	53.3%	19.1%	<5.0%	52.6%	9.7%		
Available Seats	138	69	55	64	33	43									

In the 2017–2018 school year, Grades 6–7 students would move from Sligo MS to Newport MS. In the 2018–2019 school year, all Grades 6–8 students would move from Sligo MS to Newport MS.

Área de Escuela Elemental de Highland

Estudio de Limites Geográficos

19 de deicembre, 2016 (revisado)

Mover a los estudiantes de escuela enseñanza que viven en el área de la Escuela Elemental de Highland de la Escuela Enseñanza de Sligo a la Escuela Enseñanza de Newport.

Escuela	Numero Proyectado de Estudiantes						2016-2017						
							Composición Racial/Etnica					%	%
	2017-2018	2018-2019	2019-2020	2020-2021	2021-2022	2022-2023	% Afro-americanos	% Asiáticos	% Hispanos	% Blancos	% 2 o Más	FARMS	ESOL
Escuela Enseñanza de Sligo													
Máximo Numero de Asientos=915													
<u>No Cambio:</u>													
Numero de Estudiantes	808	801	856	919	985	954							
Porcentaje de Edificio Ocupado	88%	88%	94%	100%	108%	104%	21.6%	7.6%	44.1%	23.4%	<5.0%	39.3%	11.4%
Asientos Disponibles	107	114	59	-4	-70	-39							
<u>Con el cambio:</u>													
Numero de Estudiantes	738	696	751	814	880	849							
Porcentaje de Edificio Ocupado	81%	76%	82%	89%	96%	93%	22.8%	8.2%	37.7%	27.5%	<5.0%	33.5%	9.7%
Asientos Disponibles	177	219	164	101	35	66							
Escuela Enseñanza de Newport Mill													
Máximo Numero de Asientos=837													
<u>No Cambio:</u>													
Numero de Estudiantes	629	663	677	668	699	689							
Porcentaje de Edificio Ocupado	75%	79%	81%	80%	84%	82%	15.9%	8.6%	48.5%	22.2%	<5.0%	41.4%	6.4%
Asientos Disponibles	208	174	160	169	138	148							
<u>Con el cambio:</u>													
Numero de Estudiantes	699	768	782	773	804	794							
Porcentaje de Edificio Ocupado	84%	92%	93%	92%	96%	95%	15.6%	7.9%	53.3%	19.1%	<5.0%	52.6%	9.7%
Asientos Disponibles	138	69	55	64	33	43							

En el año escolar 2017-2018, estudiantes en los grados 6-7 pasaran de la Escuela Enseñanza de Sligo a la Escuela Enseñanza de Newport Mill. En el año escolar 2018-2019, los estudiantes en los grados 6-8 pasaran de la Escuela Enseñanza de Sligo a la Escuela Enseñanza de Newport Mill.

Appendix D

Evaluation Forms

Highland Elementary School Area Boundary Advisory Committee

Evaluation of Boundary Options

January 24, 2016

Representative Name: Pat Coleman			School Name: Sligo MS/PTSA representative
Evaluation Criteria	Meets Criterion	Does not Meet Criterion	Narrative Evaluation Statement
Minimize island assignments and create contiguous boundaries.	✓		Boundary change eliminates island
Maintain student relationships by maximizing opportunities to remain together through high school.	✓		Boundary change ensures same schools ES through HS
Motivate students by keeping friends together.	✓		Boundary change ensures same schools ES through HS
Balance the number of students between the two middle schools for the next five years.	✓		MCPS enrollment projections indicates 93-95% capacity in out years (2022-2023) for both Newport Mill and Sligo MS. <i>No change</i> would result in 82% at Newport Mill MS in 104% for Sligo MS in 2022-2023.
Minimize distance to middle school assignment.	✓		Walking to MS now possible with boundary change
Minimize the amount of transportation and time that students travel to school including afterschool activities.	✓		Travel time minimized with boundary change
Consider the program offerings at both of the middle schools.	✓		Boundary change increases opportunities for students in Highland Elementary School area. Newport Mill MS has a Middle Years Program and Sligo does not.
Make students more independent by having geographic proximity.	✓		Travel time minimized with boundary change; Walking now possible.
Ensure that both schools retain an adequate number of students to provide the staffing required to address the needs of the students.	✓		MCPS enrollment projections indicates 93-95% capacity in out years for both Newport Mill and Sligo MS
Promote comparable race and ethnic and socioeconomic demographics.	✓		Meets most of the criteria. Analysis of current race/ethnic composition indicates changes of 5% or less for Newport Mill MS. Projections for race/ethnicity were not made and thus not available for evaluation.
Enable parental access to schools to promote participation, community cohesion, and facilitate emergency access.	✓		Travel time minimized with boundary change; Walking now possible
<u>Other Comments:</u>			

Highland Elementary School Area Boundary Advisory Committee Evaluation of Boundary Options

January 24, 2016

Representative: Rachel Goldberg		Island Resident		School Highland Elementary
Evaluation Criteria	Meets Criterion	Does not Meet Criterion	Narrative Evaluation Statement	
Minimize island assignments and create contiguous boundaries.	✓		Obviously no island = contiguous boundaries.	
Maintain student relationships by maximizing opportunities to remain together through high school.	✓		Highland is a model of economic and racial diversity. And we are thrilled and proud that friendships easily cross lines between the wealthier parts of the neighborhood and the smaller less expensive houses. Kids have friends across the neighborhood and that's a great thing. However were the option to fail and the status quo to prevail, that achievement would mean isolation for the Highland kids as they are separated from lifelong friends just as they move to a new school and life stage. Doing that to children is terrible. Doing it to the low-income/ESL kids who are more likely to find the transition difficult to begin with makes even less sense. Maintaining those relationships is a crucial source of social support in making the transition to middle school.	
Motivate students by keeping friends together.	✓		See above – feelings of isolation and loneliness are not really known for fostering academic excellence, confidence and overall adjustment.	
Balance the number of students between the two middle schools for the next five years.	✓		We can't be sure, but the trend suggests that Sligo would be oversubscribed without the option and Newport would be under, which might be a more significant problem. Some economies of scale are impossible to achieve as a school gets tinier, and we believe there will be a net gain to the school as individual and school wide resources increase with the increased enrollment	
Minimize distance to middle school assignment.	✓		Sligo is about 3 miles from my house, and Newport is one mile.	
Minimize the amount of transportation and time that students travel to school including afterschool activities.	✓		At rush "hour" (anytime from 7-9:30 AM) the route from one to the other goes through some of the most congested areas of Wheaton/silver spring. This would increase the distance and the TIME of the commute. And being on a bus is wasted time – can't get exercise, can't do homework, should be socializing much or playing because it's dangerous. And of course many parents who are home during the day in a lower income area like the highland may not have a spare car to pick up a sick kid, but could walk to Newport. There isn't any direct public bus route from Island area to Sligo. Not even close.	

Representative: Rachel Goldberg	Island Resident		School Highland Elementary
Evaluation Criteria	Meets Criterion	Does not Meet Criterion	Narrative Evaluation Statement
Consider the program offerings at both of the middle schools.			It's not entirely clear what program offerings will be affected because we don't know what enrollment numbers are required to change resource allocations. We don't really know what budget changes are tied to raw #s of student enrollment, and what finding is tied to FARMS %, etc.
Make students more independent by having geographic proximity.	✓		I'd love for my kids to get to exercise their bodies and their independence by walking to middle school.
Ensure that both schools retain an adequate number of students to provide the staffing required to address the needs of the students.			Again, we don't know. But as a parent in the highland island I do think it's important that we not consider placing burdens on students in the island in order to maintain the availability of options at SLIGO. Ideally, each school would receive what it needs based on the number and needs of their student body. We should not hold the Island kids captive in an inappropriate and disadvantageous arrangement in order to achieve the broader goals of a particular school.
Promote comparable race and ethnic and socioeconomic demographics.	✓	✓	From the data provided, it seems that both schools will maintain significant racial diversity under the option. The SES balance will change, and the schools will have significantly different levels of FARMS, etc. <u>The burden of maintaining economic diversity MUST NEVER BE PLACED ON THE LOW-INCOME community.</u> Every study on busing and bears this out and every set of principles on educational best practices that I have ever seen agrees on this. You do not achieve or maintain economic diversity at the expense of low-income students' ability to maintain social relationships, or the ability of their parents to transport them and stay in contact with the school.
Enable parental access to schools to promote participation, community cohesion, and facilitate emergency access.	✓		
<u>Other Comments:</u> I understand that the parents at Newport Mill are concerned about whether the adding these kids – my kids – to the local school to which logic dictates they go will add to shortages at the school. We do not know the budget formulas, and how the increase in matriculation would increase the operating budget. We do not know whether the increased FARMS % would trigger additional resources and if so how much. But once the Highland Island parents are part of the Newport Mill school we will certainly work with the PTA to make sure that there are no inequities between Newport and other MoCo schools, within or outside the Einstein cluster. Highland Island children should not be forced to continue in a disadvantageous situation because Newport has been historically shortchanged on resources. We should direct the children into the appropriate school and then work with the Board to ensure that the resources funneled into Newport are appropriate to the size and makeup of the student body and are on par with those at other school. It would not make sense to reject the option because of tech deficiencies/discrepancies with Sligo that ought to be addressed in any event.			

Highland Elementary School Area Boundary Advisory Committee Evaluation of Boundary Options

January 24, 2016

Representative Name: Alexandrine Henry			School Name: Sligo Middle School
Evaluation Criteria	Meets Criterion	Does not Meet Criterion	Narrative Evaluation Statement
Minimize island assignments and create contiguous boundaries.	√		Reassigning the Highland ES students to Newport MS creates an easier commute. The boundary between Highland ES and Newport MS makes it easier for Highland ES students and families as compared to Sligo MS.
Maintain student relationships by maximizing opportunities to remain together through high school.	√		The shorter distance between Highland ES and Newport MS helps to establish and maintain important relationships starting from elementary school all the way through high school. The Highland ES students from the "island" become separated from the majority of their student body who attend Newport MS.
Motivate students by keeping friends together.	√		Maintaining a shorter distance between the schools encourages important friendships between the students and families. An island isolates students and families from their neighborhood.
Balance the number of students between the two middle schools for the next five years.	√		The data provided predicts in the next five years both middle schools will have a similar amount of students if the reassignment occurs. Sligo MS will be at ~93% of capacity and Newport MS will be at ~95% of capacity.
Minimize distance to middle school assignment.	√		Reassigning the students to Newport MS will significantly reduce the distance needed to travel to get to school during the school week.
Minimize the amount of transportation and time that students travel to school including afterschool activities.	√		The reassignment will improve local traffic and make it easier for students to participate in afterschool activities.
Consider the program offerings at both of the middle schools.	√		Newport MS has a MYP and Sligo MS does not. However, Sligo MS does have more technological equipment including Chromebooks and Promethean boards for almost every classroom as compared to Newport MS.
Make students more independent by having geographic proximity.	√		The closer distance between Highland ES and Newport MS will encourage students to be more independent. For example, students can more easily walk to school as opposed to taking the bus. It will also encourage students to participate in more afterschool activities because it's easier to get home.
Ensure that both schools retain an adequate number of students to provide the staffing required to address the needs of the students.	√		The staff at Newport MS can accommodate the small amount of new students however, additional staff may be needed when considering these new students in combination with additional students that will enroll in its school over the next five years.
Promote comparable race and ethnic and socioeconomic demographics.		√	The racial and ethnic data provided predicts Newport MS will have significant a significant increase in the number of Hispanic students over the next five years. The amount of students eligible for FARMS will increase as well.

Representative Name: Alexandrine Henry			School Name: Sligo Middle School
Evaluation Criteria	Meets Criterion	Does not Meet Criterion	Narrative Evaluation Statement
Enable parental access to schools to promote participation, community cohesion, and facilitate emergency access.	√		The reassignment of Highland ES students to Newport MS will encourage better parental access to the schools and participation in school.
Other Comments: The general consensus from the representatives from Sligo MS is the reassignment of the Highland ES “island” to Newport MS would be best from the students, their families, both middle schools and the Downcounty Consortium (DCC)			

Highland Elementary School Area Boundary Advisory Committee Evaluation of Boundary Options

January 24, 2016

Representative Name: Meg Kabat			School Name: Newport Mill Middle School
Evaluation Criteria	Meets Criterion	Does not Meet Criterion	Narrative Evaluation Statement
Minimize island assignments and create contiguous boundaries.	X		Most definitely eliminates island assignments and creates much clearer boundaries.
Maintain student relationships by maximizing opportunities to remain together through high school.	X		To me, this is the most important factor in the study, keeping children together through Middle School.
Motivate students by keeping friends together.	X		I do not believe that the impact of social relationships can be underestimated. Children should be allowed to be kept together from Elementary School to Middle School.
Balance the number of students between the two middle schools for the next five years.	X		While this criterion is met, I do not believe this is the most significant factor. While important, it is not essential – there are other ways to balance enrollment.
Minimize distance to middle school assignment.	X		Eliminates the need for bussing.
Minimize the amount of transportation and time that students travel to school including afterschool activities.	X		Eliminates the need for bussing, and most definitely minimizes the amount of time it takes for students to get to middle school.
Consider the program offerings at both of the middle schools.		X	This boundary study does not appear to impact the program offerings at both middle schools.
Make students more independent by having geographic proximity.	X		Students will be closer to school, allowing them to attend after school activities more easily and allowing their parents/guardians to participate in activities at school.
Ensure that both schools retain an adequate number of students to provide the staffing required to address the needs of the students.	X		Change would provide a more equivalent number of students in each site, and allow both school to be closer to the 80% that has been described as ideal.
Promote comparable race and ethnic and socioeconomic demographics.		X	This change would significantly increase the ESOL and FARMS rates at NMMS and further differentiate them from one another.
Enable parental access to schools to promote participation, community cohesion, and facilitate emergency access.	X		This change does allow closer proximity to school, hopefully increasing parental involvement.
Other Comments: The resources available (beyond staffing) at NMMS MUST be taken into consideration, especially the availability of smart boards in classrooms, Chromebooks, and other equipment/technology needs if this change occurs, or even more children will be without such resources as are now at NMMS			

Highland Elementary School Area Boundary Advisory Committee Evaluation of Boundary Options

January 24, 2016

Representative Name: Sara Rivera			School Name: Newport Mills Middle School
Evaluation Criteria	Meets Criterion	Does not Meet Criterion	Narrative Evaluation Statement
Minimize island assignments and create contiguous boundaries.	X		
Maintain student relationships by maximizing opportunities to remain together through high school.	X		
Motivate students by keeping friends together.	X		
Balance the number of students between the two middle schools for the next five years.	X		Moving the Highland Island to NMMS will bring both schools closer to the magic enrollment of 80% +/- But there after there is no guarantee. With current community development it is hard to accurately estimate.
Minimize distance to middle school assignment.	X		
Minimize the amount of transportation and time that students travel to school including afterschool activities.	X		
Consider the program offerings at both of the middle schools.	X		NMMS has comparable class offerings and after school programs that the students would benefit from.
Make students more independent by having geographic proximity.	X		
Ensure that both schools retain an adequate number of students to provide the staffing required to address the needs of the students.		X	Concern over increase in students and not enough resources to accommodate needs of larger class sizes. NMMS feels that there are currently not enough tools and resources in the classrooms to go around thus larger class or more classes will create more of a detriment to students.
Promote comparable race and ethnic and socioeconomic demographics.	X		
Enable parental access to schools to promote participation, community cohesion, and facilitate emergency access.	X		
<u>Other Comments:</u>			

Highland Elementary School Area Boundary Advisory Committee Evaluation of Boundary Options

January 24, 2016

Representative Name:			School Name:
Walter Sanchez			Highland ES PTA
Evaluation Criteria	Meets Criterion	Does not Meet Criterion	Narrative Evaluation Statement
Minimize island assignments and create contiguous boundaries.	X		
Maintain student relationships by maximizing opportunities to remain together through high school.	X		
Motivate students by keeping friends together.	X		
Balance the number of students between the two middle schools for the next five years.	X		Based on current CIP and no change, Sligo is projected to be at 108% capacity in 2021-22, Newport is projected to be at 84% capacity. If this change is made, projections would bring both schools to 96% in 2021-22.
Minimize distance to middle school assignment.	X		
Minimize the amount of transportation and time that students travel to school including afterschool activities.	X		Newport Mill MS is approximately 1 mile from most families and walkable. Sligo MS is approximately a 3 mile bus ride for students and there is not convenient public transportation.
Consider the program offerings at both of the middle schools.	X		
Make students more independent by having geographic proximity.	X		
Ensure that both schools retain an adequate number of students to provide the staffing required to address the needs of the students.			Assuming that MCPS will calculate the needs of both schools through their normal staffing calculations.
Promote comparable race and ethnic and socioeconomic demographics.			Although the status quo maintains a greater balance than the projections, the change does not put the demographics out of a normal range for the DCC.
Enable parental access to schools to promote participation, community cohesion, and facilitate emergency access.	X		
Other Comments: After multiple PTA meetings in the spring and fall of 2016, Highland families strongly favor ALL students to articulate to Newport Mill MS.			

Highland Elementary School Area Boundary Advisory Committee

Evaluation of Boundary Options

January 24, 2016

Representative Name: Laura Stewart			School Name: Einstein Cluster Coordinator
Evaluation Criteria	Meets Criterion	Does not Meet Criterion	Narrative Evaluation Statement
Minimize island assignments and create contiguous boundaries.	Yes		The new configuration will eliminate an "island."
Maintain student relationships by maximizing opportunities to remain together through high school.	Yes		The Highland cohort will stay together through high school.
Motivate students by keeping friends together.	Yes		Students will have a cohesive cohort.
Balance the number of students between the two middle schools for the next five years	Yes		This boundary change creates an equitable distribution of students when looking at the 5 year projections.
Minimize distance to middle school assignment.	Yes		Affected students may be able to walk to school versus the busing that currently takes place.
Minimize the amount of transportation and time that students travel to school including afterschool activities.	Yes		
Consider the program offerings at both of the middle schools.	Yes		The change adds students to the Newport Mill program which offers the Middle School Years Program. This is considered a value to those enrolling in the Einstein IB program. Sligo students would like to have this opportunity.
Make students more independent by having geographic proximity.	Yes		More students will be able to walk to school.
Ensure that both schools retain an adequate number of students to provide the staffing required to address the needs of the students.	Yes		This change offers equity in student body size for both Newport Mill and Sligo. Both schools will have the 700 student population target for a middle school, and should be able to provide teachers for varied middle school offerings. Sligo will still need adequate support for FARMS and ESOL students, and Newport Mill will need additional resources.
Promote comparable race and ethnic and socioeconomic demographics.		No	Compared to the demographics of the schools currently, the middle schools affected will no longer have a similar socioeconomic demographic profile. Newport Mill will be at over 50% FARMS rate, and will need additional supports for these students. Sligo must not lose support for the remaining FARMS students. FARMS students should have adequate resources to reach their potential. Test scores for each school may be affected, but this can be mitigated with proper social and educational supports. Race and ethnic demographics are somewhat affected, but not to the same extent as socioeconomic. The boundary change requested by the Highland community will change the balance significantly.

Representative Name: Laura Stewart			School Name: Einstein Cluster Coordinator
Evaluation Criteria	Meets Criterion	Does not Meet Criterion	Narrative Evaluation Statement
Enable parental access to schools to promote participation, community cohesion, and facilitate emergency access.	Yes		Parent participation is extremely important in a child's education. This boundary change will enable parents to walk to their middle school if transportation is an issue. This boundary change could foster the family/school bond and the school could also serve as a support to the whole family. If the boundary is changed as requested, partnerships with families could produce better outcomes for the child.
Other Comments: It is extremely important to hear all stakeholders in this move. Newport Mill will need significant support and programming in order to make sure the students' needs are met. This task will be easier by having the students live within walking distance to the school. Sligo Middle School will still have over 30% FARMS rate, and very similar ESOL rates when compared to Newport Mill. They will still need resources and also request the Middle Years program in order to have programming equity with Newport Mill. In the final conclusion, this boundary change will be a positive for all parties, if educational and social supports are provided. It will not be enough to simply move the boundary in order to reduce the need for buses and to fill empty seats.			

Appendix E

Position Papers



HIGHLAND ELEMENTARY SCHOOL PTA

3100 Medway St. Silver Spring MD 20902
Email: Highlandespta@gmail.com

January 22, 2017

Highland Elementary School Area Boundary Advisory Committee
Division of Long-range Planning
Montgomery County Public Schools
45 West Gude Drive, Suite 4100
Rockville, MD 20850

Dear Boundary Advisory Committee,

As the group that initially requested a boundary study involving the middle school boundaries for the Highland Elementary School feeder area, the Highland Elementary PTA is in favor of changing the boundaries so that all Highland students would articulate to Newport Mill Middle School.

We have discussed this issue at several PTA meetings, beginning in the spring of 2016. The general consensus at our meetings has been that, not only would it make sense from a logistical point of view, most of our families who live in the affected area are in favor of the change. While there has been a parent or two who has voiced a preference for the convenience of putting their child on a school bus, the overwhelming response has been "We want our children to go to Newport Mill Middle School."

At our January 10, 2017, PTA meeting, we presented the materials that came out of the first Boundary Advisory Committee meeting on December 19, 2016. Of the 18 members in attendance at the January meeting, all favored the change. Five of those in attendance live in the area that currently is assigned to Sligo Middle School. The general sense of the meeting was that bussing students across town did not make sense. The issue of students needing to get up earlier to take the bus, disrupting their sleep patterns, was also raised, as well as the fact that the funds spent on a bus route could be better spent on something that helps more children.

As we noted in our July 2016 letter to the DLRP, we believe that the "island" created by the current boundaries is detrimental to the children and families within the Highland Elementary community. Our reasons for this were described in our letter, so we will not entirely restate them here, but will reiterate our main points:

- **Separation from community and support system.** As a small, all-walking school, Highland has a unique and close-knit environment in which our families and children build very strong bonds and friendships. The children who are bussed to Sligo are thrown into a new environment, and forced to adjust to middle school while also adjusting to an entirely new community.
- **Logistical challenges for low SES and ESL families.** Many students from the "Highland Island" are likely to be from low SES and ESL families. Many of these families may not have reliable transportation. If a student were to happen to miss the bus, there is not good, accessible, public transportation to easily arrange transportation to and from the school.

- **Reduced access to school facilities and support services.** As shown in study after study, a student's success in the classroom is heavily predicted by the parents' involvement in the school. The distance to Sligo and the difficulties of transportation make it difficult for parents without sufficient means to actively engage in their child's education.
- **Increased costs to the school system.** For the approximately 30 children per grade who are slated to attend Sligo from within the Highland boundary, the MCPS must pay for a bus route. This presumably comes at a considerable cost to the county and MCPS.
- **Contribution to overcrowding projections at Sligo Middle School.** As shown in the options provided by MCPS at the December 19 Boundary Advisory Committee meeting, without the change Sligo will be at capacity in 2020 (and over capacity the following years), while Newport Mill would not go over 84% capacity in the 6-year projections. With all of this extra capacity at our neighborhood school, we should not be bussing our middle school students to an overcrowded school in a different neighborhood 3 miles away. The projections on the December 19 materials show that with the change both schools would be at 96% capacity in 2021.

We recognize that one factor MCPS will look at is the change in demographics of Sligo and Newport Mill should the change be made. In looking at the chart from the December 19 meeting, we note that, while both schools will remain relatively racially diverse, the biggest change would be that Newport Mill would become 55.9% (from 48.5%) Hispanic, while Sligo would drop from 44.1% to 37.7% Hispanic. In addition, the FARMS rate at Sligo would drop from 39.3% to 33.5% and would rise at Newport Mill from 41.4% to 55.2%. However, with these changes, both schools would still be comparable to others in the Downcounty Consortium.

In addition, we underscore the point that these are precisely the types of at-risk students who should NOT be subjected to additional barriers to education. As outlined in our points above, pulling these students from their home school further separates these children from their family and community support structures, at a very vulnerable point in time. Not only that, but by "exporting" children from our community, to an overcrowded school in a different community, the outcome could be a furthering the achievement gap, rather than closing it.

We respectfully request that MCPS change the boundary so that all Highland Elementary Students articulate to Newport Mill Middle School.

Thank you.

Sincerely,

Highland Elementary PTA

PTA Board Members:

Vanessa Miranda, President
Sujata Bijou, Vice President
Kirstin Goldston, Treasurer
Lois Kent, Secretary

January 26, 2017

Dr. Jack Smith, Superintendent
Montgomery County Public Schools
Carver Educational Services Center
850 Hungerford Drive, Room 123
Rockville, MD 20850

Re: Highland Elementary School Area Boundary Advisory Committee

Dear Dr. Smith –

On behalf of the Newport Mill Middle School Parent, Teacher, Student Association (PTSA), thank you for the opportunity to express our thoughts on the proposed boundary study.

At our monthly meeting in January we heard details about the boundary study and discussed the proposal. Here are our thoughts:

The PTSA is generally supportive of the idea that all Highland Elementary School students should attend Newport Mill Middle School. We understand and appreciate the social and emotional benefits of keeping students together as they make the transition from elementary to middle school. An added benefit is that these students would be able to walk to Newport Mill like their fellow Highland classmates, rather than take the bus to Sligo, as they currently do.

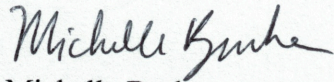
While we are generally supportive of the boundary change, we do have some concerns. Incoming 6th grade students are entering a very different learning environment: changing classes, multiple floors, lockers, as well as seven or more teachers throughout the year. Establishing a rapport in 6th grade at Sligo only to be uprooted in 7th grade to be sent to Newport Mill may not be in their best interest. If these students leave after one year, there is little investment in Sligo's school community. Then in turn, they are the "Sligo kids" once they enter 7th grade at Newport Mill. If the additional students enter Newport Mill as 6th graders, there is one fewer transition and three years of support from one staff to prepare them for high school. Therefore we urge that, over the next three years, students come to Newport Mill MS as they enter into 6th grade.

In addition, based on the data we received at the PTSA meeting, we were not able to determine what the educational impact of this change might be. For instance, we are not certain if or how additional students at Newport Mill will impact learning for Newport Mill's existing student body. From our perspective as parents, we hope that this move will result in a better learning environment for all students.

One other issue of concern is resources. Newport Mill Middle School is still trying to obtain Promethean Board technology in 11 classrooms and staff struggle to coordinate use of the limited number of Chromebooks for all the classes that have requested them. Additional students will stretch these technology resources further. It's not just technology resources that will be stretched. As numbers rise in the classrooms, so too should the number of staff. Among the Highland students there may be special education and ESOL students who require special scheduling, as well as students with 504 plans, who require case management from counselors. We understand that this boundary study is different from others because it does not involve the opening of a new school and it is not clear from the data presented to us whether resources beyond staffing have been taken into consideration as part of this boundary study. For these reasons, we strongly urge you to provide Newport Mill MS additional and appropriate resources to lessen the strain on the existing technological, instructional and administrative resources at the school.

Thank you very much for your attention to this matter.

Sincerely,

A handwritten signature in cursive script that reads "Michelle Burke".

Michelle Burke

On behalf of the Newport Mill Middle School PTSA

Sligo Middle School PTSA Position Paper
Highland ES Area Boundary Study
January 2017

The Sligo MS PTSA has shared through electronic media information about and hosted a discussion session (on January 12, 2017) regarding the proposed boundary change, which would bring the area colloquially known as the “Highland Island” into the Newport Mills catchment area.

Upon review, the Sligo MS PTSA believes that the proposed boundary change benefits the three schools involved, and should move forward. To wit, via the proposed change, students in the area effected will become more a part of the community closer to their homes, and will not have to endure long bus rides to a school outside of their home community.

We do, however, express certain concerns that should be addressed:

- Historically, MCPS’ projected student enrollment numbers have been low, particularly in the Downcounty Consortium area. This is especially true in schools that serve the Silver Spring area, which has seen significant growth in multi-family units. We urge you to speak more proactively with local developers and cast a more skeptical eye on promises that new development will have minimal impact on schools such as Sligo.
- One of the evaluation criteria listed for the committee to consider reads, “Consider the program offerings at both of the middle schools.” We have, and have asked time and again for Sligo to be considered for a Middle Years Program. The students impacted by this change will have the opportunity to enroll in the Newport Mills Middle Years Program. It is time for all of the students who feed into Einstein to enjoy this opportunity.
- One of the evaluation criteria listed for the committee to consider reads, “Ensure that both schools retain an adequate number of students to provide the staffing required to address the needs of students.” We are gravely concerned that the projected enrollment at Sligo will exceed capacity within a few years. We ask that, in return for Sligo PTSA’s support of this boundary change, Sligo receive special consideration for the impact on its staffing.

Thank you.

Chris Rutledge
Sligo MS PTSA President, 2016-2017

Appendix F

Community Input

Highland Elementary School Boundary Study Discussion Group Community Feedback Summary

Collected through two community meetings held on January 31, 2017 and an online Google Form

Support Option to move Highland Elementary School area from Sligo Middle School to Newport Mill Middle School	
Support	Don't Support
59	6

Affiliations:

- Highland Elementary School
- Newport Mill Middle School
- Sligo Middle School
- Einstein High School

Positive aspects of this Option:

- The "Sligo island" would be able to walk to school
- Better student health as a result of walking to school
- Cost savings (fewer buses)
- Time savings (fewer buses and/or shorter rides)
- Neither middle school would exceed capacity or need portable classrooms
- Balanced number of students between the two middle schools
- Newport Mill Middle School would meet the preferred minimum desired school size
- Newport Mill Middle School has more room to grow than Sligo Middle School does
- Students would no longer be separated from peers for middle school
- Decreased anxiety for students about entering middle school
- Improved social support for students when they enter middle school
- Prevents second separation of peers entering high school (when Sligo Middle School splits between Northwood and Einstein high schools)
- Reduces burden on families to transport students to after-school programs
- Facilitates student participation in extracurricular activities
- Promotes community (neighbors attending school together)
- Promotes parent-to-parent interactions
- Promotes more parent participation in schools
- Ensures neighborhood students at the elementary, middle, and high school levels are all attending school within a mile of each other, which makes family logistics easier

Highland Elementary School Boundary Study Discussion Group Community Feedback Summary

- Enables older siblings at Einstein HS to pick-up younger siblings at Newport Mill Middle School
- Reduces burdens on families without access to a vehicle
- Enables better parental access in case of emergencies
- Increased student safety
- More logical school boundaries
- Reduced burden on 5th grade staff communicating with middle school staff (1 middle school instead of 2)

Negative aspects of this Option:

- Transition/the need to become familiar with a new school
- Additional resources may be needed at Newport Mill Middle School
- Newport Mill Middle School could approach capacity in the “out-years”
- Lack of bus transportation (preference for busing over walking)
- Attending Newport Mill Middle School (prefer for Sligo Middle School)

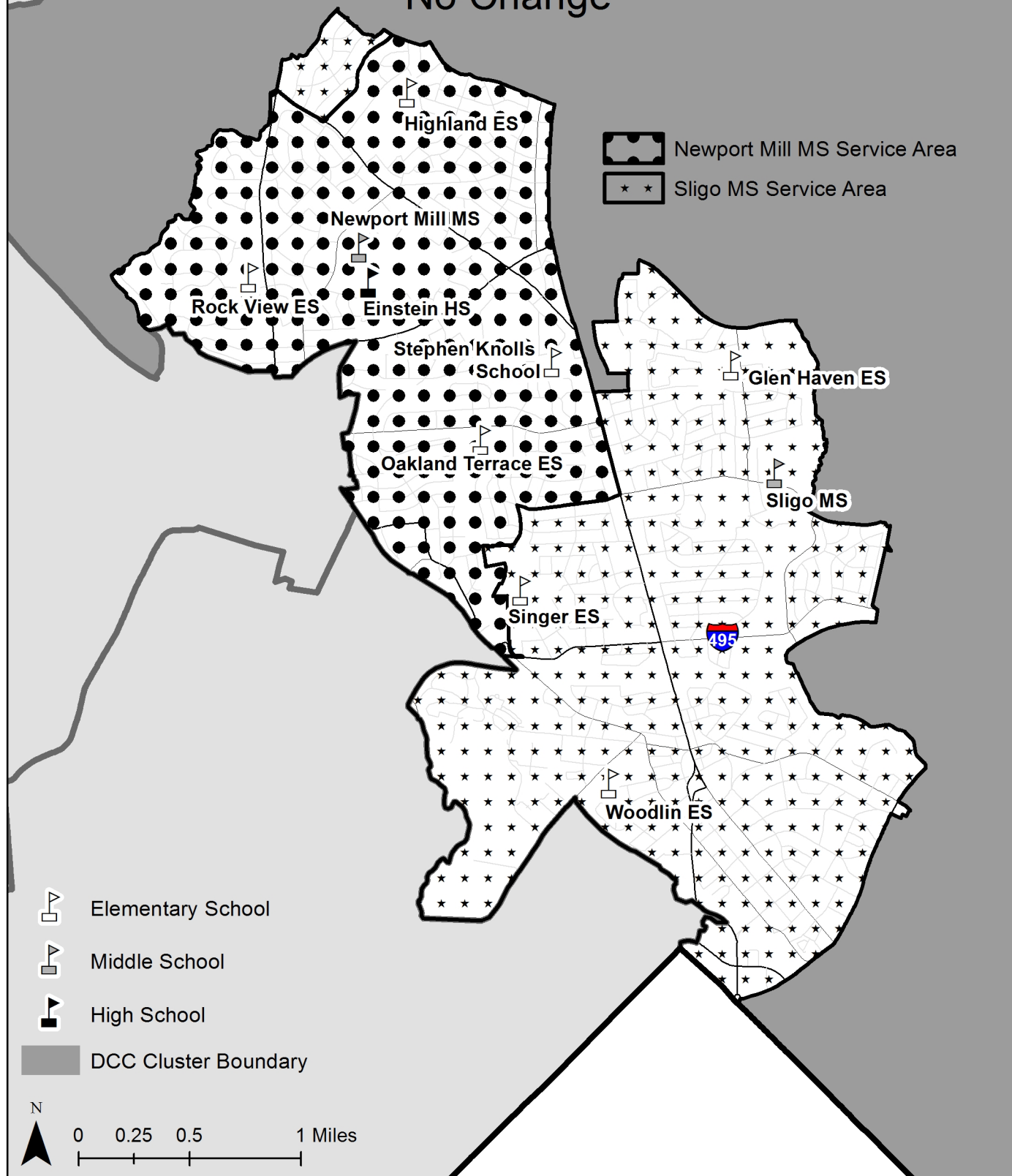
Additional comments:

- Safety concerns about pedestrians crossing Georgia Avenue
- Safety concerns about pedestrians crossing Viers Mill Road
- Safety concerns about having to walk along Viers Mill Road to get to school
- Request for a crossing guard at the intersection of Claridge Road and Viers Mill Road (this comment appeared on many feedback forms)
- Multiple pick-ups/drop-offs for parents with students attending both middle schools (during the transition)
- Bus transportation to Newport Mill Middle School requested
- Parents should be able to choose between the two middle schools
- The current boundaries do not make sense and should not have been created
- Higher FARMS numbers should result in more help for students who need it

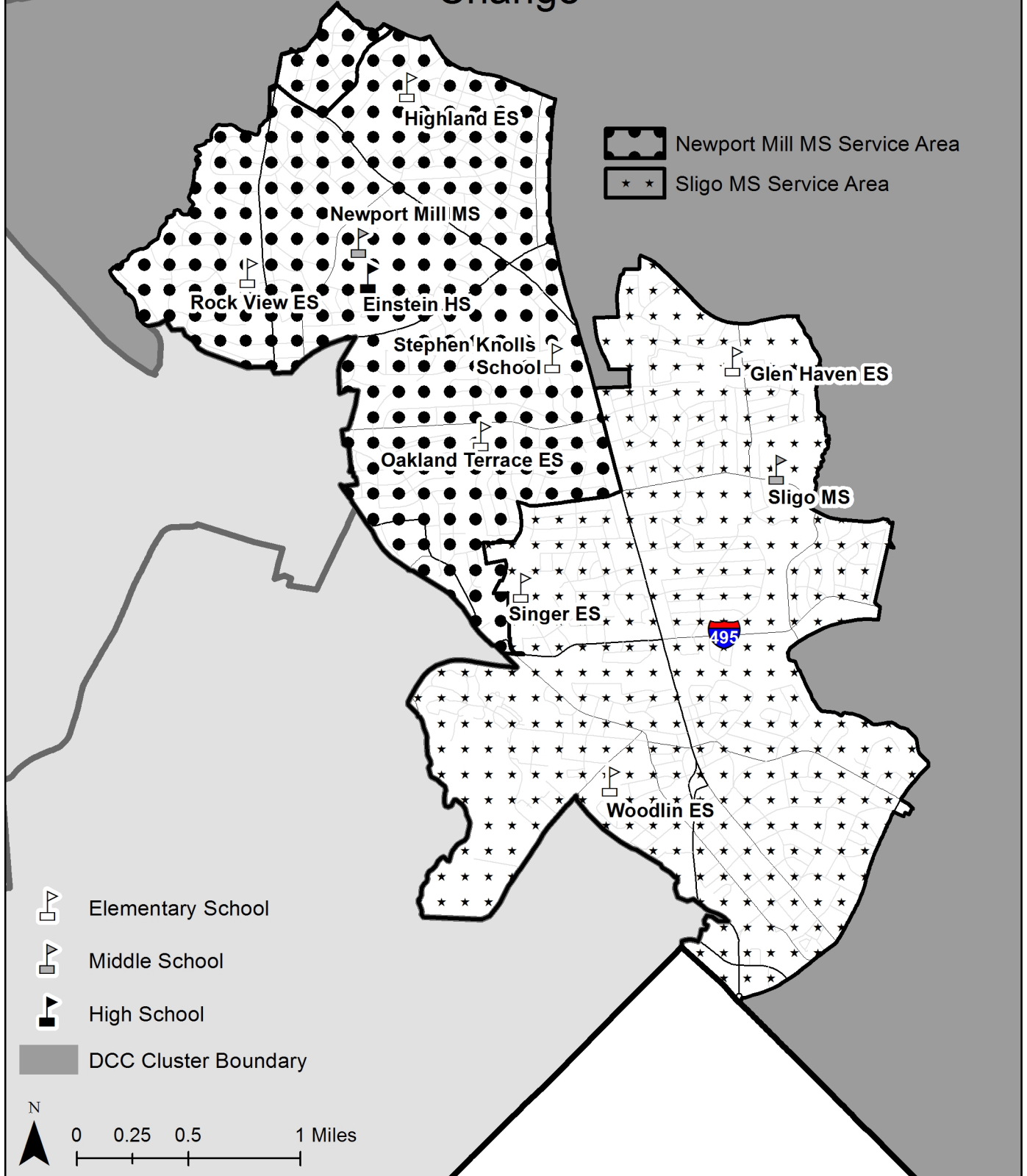
ADDENDUM

Revised Option 2-2-2017

Highland ES Area Boundary Study December 19, 2016 No Change



Highland ES Area Boundary Study December 19, 2016 Change



Highland Elementary School Area Boundary Advisory Committee

2/2/2017 (Revised)

Move middle school students who live in the Highland Elementary School area from Sligo Middle School to Newport Middle School.

School	Projected Number of Students						2016-2017 Race/Ethnic Composition								% FARMs	% ESOL
	2017-2018	2018-2019	2019-2020	2020-2021	2021-2022	2022-2023	% Afr. Amer.	% Asian	% Hispanic	% White	% 2 or More					
Sligo MS																
Maximum Number of Seats = 915																
<u>No Change:</u>																
Number of Students	808	801	856	919	985	954										
Percent of Building Occupied	88%	88%	94%	100%	108%	104%	21.6%	7.6%	44.1%	23.4%	<5.0%	43.3%	11.6%			
Available Seats	107	114	59	-4	-70	-39										
<u>With Change:</u>																
Number of Students	738	696	751	814	880	849										
Percent of Building Occupied	81%	76%	82%	89%	96%	93%	22.8%	8.2%	37.7%	27.5%	<5.0%	38.7%	9.8%			
Available Seats	177	219	164	101	35	66										
Newport Mill MS																
Maximum Number of Seats= 837																
<u>No Change:</u>																
Number of Students	629	663	677	668	699	689										
Percent of Building Occupied	75%	79%	81%	80%	84%	82%	15.9%	8.6%	48.5%	22.2%	<5.0%	45.9%	7.3%			
Available Seats	208	174	160	169	138	148										
<u>With Change:</u>																
Number of Students	699	768	782	773	804	794										
Percent of Building Occupied	84%	92%	93%	92%	96%	95%	15.6%	7.9%	53.3%	19.1%	<5.0%	50.3%	10.5%			
Available Seats	138	69	55	64	33	43										

In the 2017-2018 school year, Grades 6-7 students would move from Sligo MS to Newport MS. In the 2018-2019 school year, all Grades 6-8 students would move from Sligo MS to Newport MS.

Área de Escuela Elemental de Highland

Estudio de Limites Geográficos

2 de enero, 2017 (revisado)

Mover a los estudiantes de escuela enseñanza que viven en el área de la Escuela Elemental de Highland de la Escuela Enseñanza de Sligo a la Escuela Enseñanza de Newport.

Escuela	Numero Proyectado de Estudiantes						2016–2017						
							Composición Racial/Etnica					%	%
	2017–2018	2018–2019	2019–2020	2020–2021	2021–2022	2022–2023	% Afro-americanos	% Asiáticos	% Hispanos	% Blancos	% 2 o Más	% FARMS	% ESOL
Escuela Enseñanza de Sligo													
Máximo Numero de Asientos=915													
<u>No Cambio:</u>													
Numero de Estudiantes	808	801	856	919	985	954							
Porcentaje de Edificio Ocupado	88%	88%	94%	100%	108%	104%	21.6%	7.6%	44.1%	23.4%	<5.0%	43.3%	11.6%
Asientos Disponibles	107	114	59	-4	-70	-39							
<u>Con el cambio:</u>													
Numero de Estudiantes	738	696	751	814	880	849							
Porcentaje de Edificio Ocupado	81%	76%	82%	89%	96%	93%	22.8%	8.2%	37.7%	27.5%	<5.0%	38.7%	9.8%
Asientos Disponibles	177	219	164	101	35	66							
Escuela Enseñanza de Newport Mill													
Máximo Numero de Asientos=837													
<u>No Cambio:</u>													
Numero de Estudiantes	629	663	677	668	699	689							
Porcentaje de Edificio Ocupado	75%	79%	81%	80%	84%	82%	15.9%	8.6%	48.5%	22.2%	<5.0%	45.9%	7.3%
Asientos Disponibles	208	174	160	169	138	148							
<u>Con el cambio:</u>													
Numero de Estudiantes	699	768	782	773	804	794							
Porcentaje de Edificio Ocupado	84%	92%	93%	92%	96%	95%	15.6%	7.9%	53.3%	19.1%	<5.0%	50.3%	10.5%
Asientos Disponibles	138	69	55	64	33	43							

En el año escolar 2017-2018, estudiantes en los grados 6-7 pasaran de la Escuela Enseñanza de Sligo a la Escuela Enseñanza de Newport Mill. En el año escolar 2018-2019, los estudiantes en los grados 6-8 pasaran de la Escuela Enseñanza de Sligo a la Escuela Enseñanza de Newport Mill.