

# **Gaithersburg Elementary School #8 Boundary Study**

Process Overview  
Division of Capital Planning  
March 2 and 3, 2020

<https://www.montgomeryschoolsmd.org/departments/planning/gaithersburgcluster8boundarystudy.aspx>

# Agenda

---

- Board Resolution
- Projections and Seats Available
- Policy FAA
- Boundary Process
- Decision Making Process

# Board of Education Resolution

ADOPTED  
3.3

Office of the Superintendent of Schools  
MONTGOMERY COUNTY PUBLIC SCHOOLS  
Rockville, Maryland

November 26, 2019

## MEMORANDUM

To: Members of the Board of Education  
From: Jack R. Smith, Superintendent of Schools  
Subject: Boundary Study to Determine the Service Area for the Gaithersburg Cluster Elementary School #8 (Kelley Park Site)

Elementary enrollment has continued to grow in the Gaithersburg Cluster since 2007. Enrollment projections are expected to exceed capacities at several elementary schools in the cluster throughout the six-year planning period. Following the findings of the Gaithersburg Cluster Elementary School Capacity Study and a site selection committee to evaluate potential school sites in the Gaithersburg Cluster, the Board of Education approved the opening of Gaithersburg Cluster Elementary School #8 on the Kelley Park site to relieve overutilization in the cluster. The school is scheduled to open in September 2022.

Through our discussions about the new Gaithersburg Cluster Elementary School #8, strong interest has been expressed by the community and several Board of Education members that the boundary study be initiated and completed earlier in advance of the school opening to the degree possible. I understand the community's interest in knowing the school boundaries, and I am recommending that we conduct the boundary study in spring 2020, approximately 30 months prior to opening the school.

We also have heard interest from the community and the Board of Education in examining the middle school boundaries and articulation as part of this boundary study. I also am recommending that the middle schools be included in the scope of the boundary study for the new Gaithersburg Cluster Elementary School #8.

WHEREAS, The superintendent of schools recommended a boundary study to determine the service area for Gaithersburg Cluster Elementary School #8 (Kelley Park site), and

WHEREAS, On November 4 and 19, 2019, the Board of Education conducted work sessions on all capital and non-capital items in the Superintendent's Recommended FY 2021 Capital Budget and the FY 2021-2026 Capital Improvements Program, and

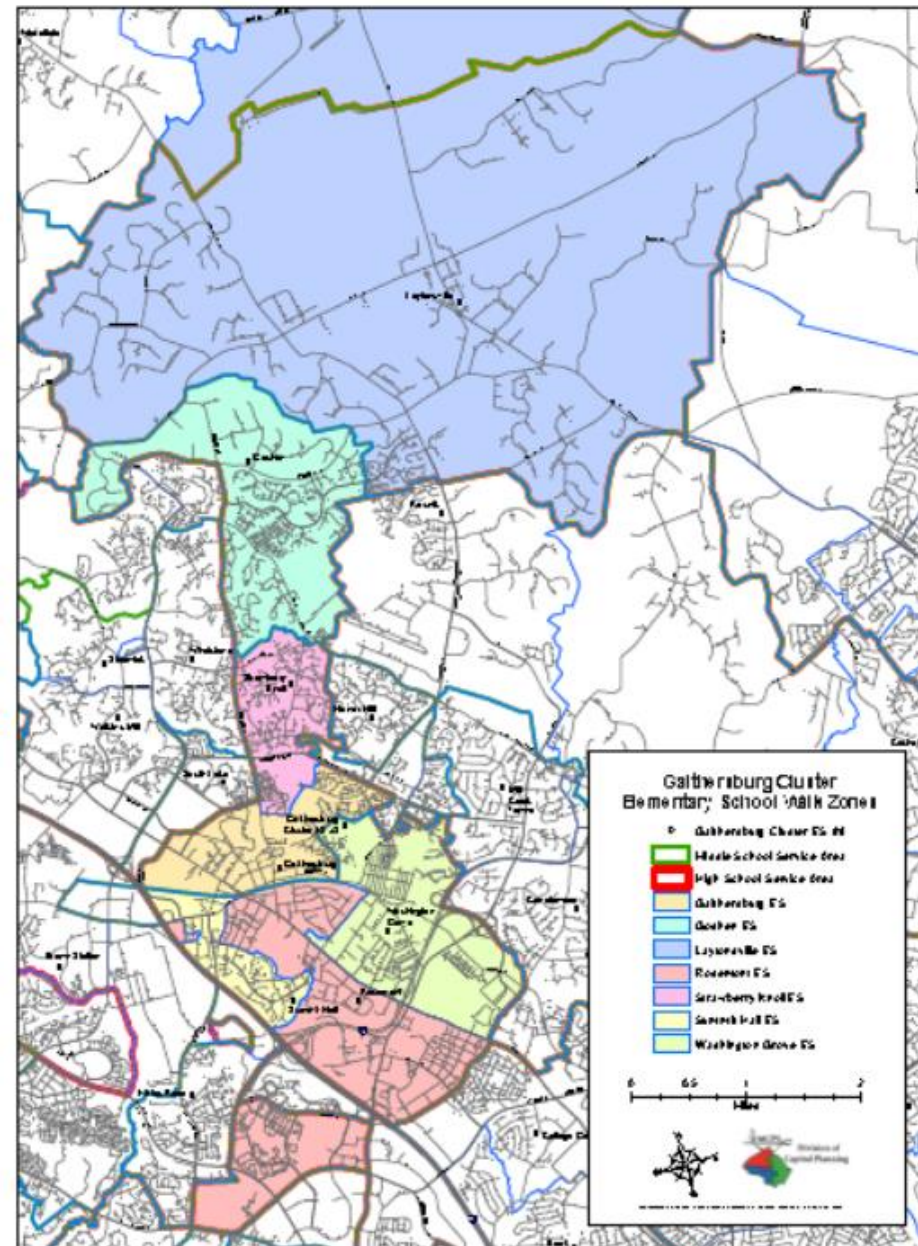
- Adopted November 26, 2019
- Elementary school enrollment has grown since 2007
- Several schools will exceed capacity
- After site selection, BOE selected Kelley Park for new school
- Based on community input, initiate boundary study earlier

- [http://gis.mcpsmd.org/boundarystudypdfs/GaithersburgES8\\_StudyBOEAdopted.pdf](http://gis.mcpsmd.org/boundarystudypdfs/GaithersburgES8_StudyBOEAdopted.pdf)

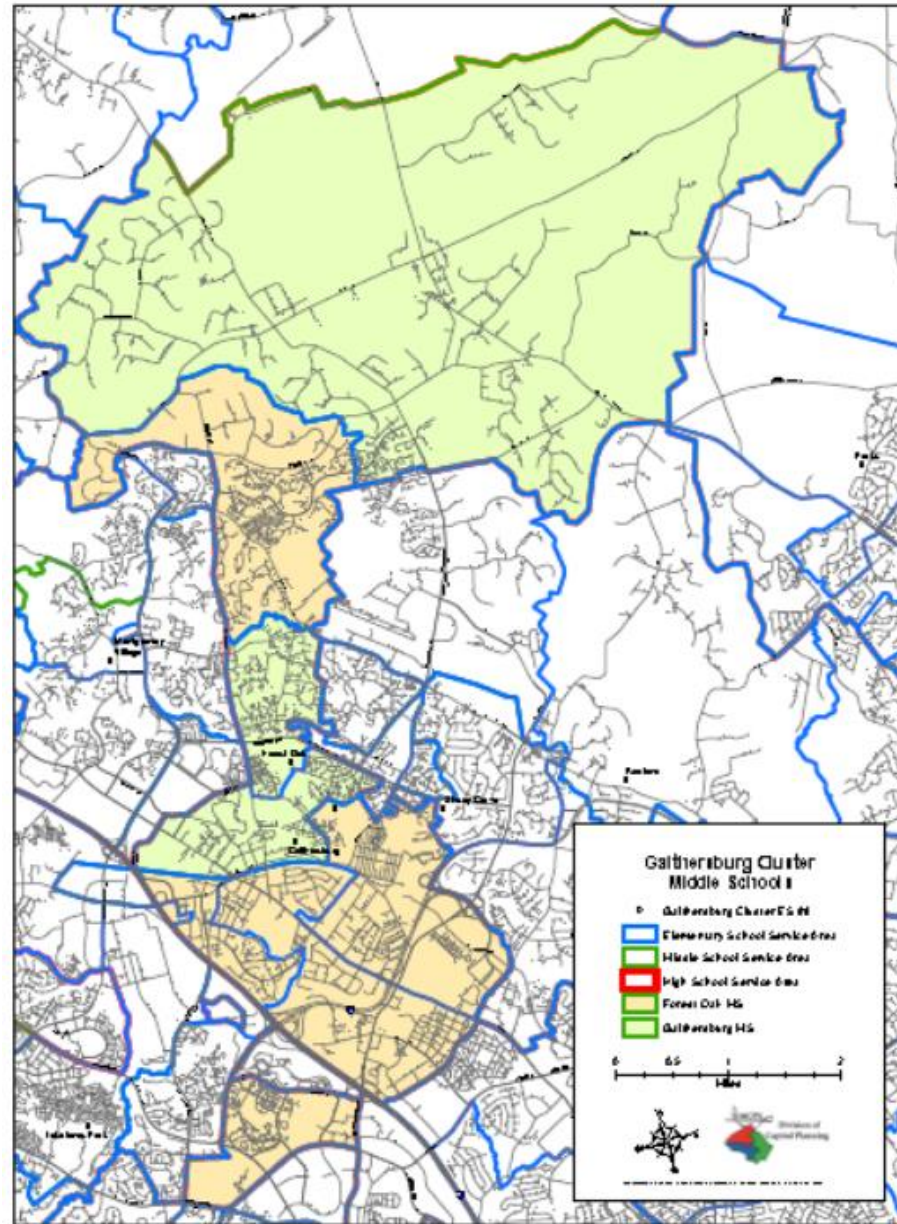
# Board of Education Resolution

- Include all of the cluster elementary schools in the boundary study:
  - Gaithersburg ES                      Goshen ES                      Laytonsville ES
  - Rosemont ES                      Strawberry Knoll ES                      Summit Hall ES
  - Washington Grove ES
- Include Forest Oak and Gaithersburg middle schools in the boundary study to review the middle school articulation patterns for the Gaithersburg Cluster elementary school
- Conduct boundary study in spring 2020 with a report be issued in fall 2020
- Superintendent's recommendation in winter 2021 with Board of Education Action in March 2021

# Map of Study Area Elementary Schools



# Map of Study Area Middle Schools



# Elementary School Projections and Available Seats

School		Official 19–20	Enrollment Projections					
			20–21	21–22	22–23	23–24	24–25	25–26
Gaithersburg ES	Program Capacity	737	737	737	737	737	737	737
	<b>Enrollment</b>	<b>865</b>	<b>869</b>	<b>878</b>	<b>890</b>	<b>887</b>	<b>884</b>	<b>883</b>
	<i>Space Available</i>	<i>-128</i>	<i>-132</i>	<i>-141</i>	<i>-153</i>	<i>-150</i>	<i>-147</i>	<i>-146</i>
Gaithersburg ES #8	Program Capacity				740	740	740	740
	<b>Enrollment</b>				<b>0</b>	<b>0</b>		<b>0</b>
	<i>Space Available</i>				740	740	740	740
Goshen ES	Program Capacity	594	594	594	594	594	594	594
	<b>Enrollment</b>	<b>571</b>	<b>549</b>	<b>536</b>	<b>540</b>	<b>541</b>	<b>548</b>	<b>561</b>
	<i>Space Available</i>	23	45	58	54	53	46	33
Laytonsville ES	Program Capacity	447	447	447	447	447	447	447
	<b>Enrollment</b>	<b>392</b>	<b>400</b>	<b>403</b>	<b>420</b>	<b>438</b>	<b>432</b>	<b>421</b>
	<i>Space Available</i>	55	47	44	27	9	15	26
Rosemont ES	Program Capacity	568	568	568	568	568	568	568
	<b>Enrollment</b>	<b>645</b>	<b>654</b>	<b>662</b>	<b>662</b>	<b>674</b>	<b>675</b>	<b>671</b>
	<i>Space Available</i>	<i>-77</i>	<i>-86</i>	<i>-94</i>	<i>-94</i>	<i>-106</i>	<i>-107</i>	<i>-103</i>
Strawberry Knoll ES	Program Capacity	459	459	459	459	459	459	459
	<b>Enrollment</b>	<b>651</b>	<b>668</b>	<b>666</b>	<b>667</b>	<b>665</b>	<b>676</b>	<b>682</b>
	<i>Space Available</i>	<i>-192</i>	<i>-209</i>	<i>-207</i>	<i>-208</i>	<i>-206</i>	<i>-217</i>	<i>-223</i>
Summit Hall ES	Program Capacity	457	457	457	457	457	457	457
	<b>Enrollment</b>	<b>702</b>	<b>729</b>	<b>726</b>	<b>732</b>	<b>721</b>	<b>723</b>	<b>704</b>
	<i>Space Available</i>	<i>-245</i>	<i>-272</i>	<i>-269</i>	<i>-275</i>	<i>-264</i>	<i>-266</i>	<i>-247</i>
Washington Grove ES	Program Capacity	613	613	613	613	613	613	613
	<b>Enrollment</b>	<b>462</b>	<b>474</b>	<b>471</b>	<b>472</b>	<b>467</b>	<b>477</b>	<b>482</b>
	<i>Space Available</i>	151	139	142	141	146	136	131
Cluster Total	Program Capacity	3875	3875	3875	4615	4615	4615	4615
	<b>Enrollment</b>	<b>4288</b>	<b>4343</b>	<b>4342</b>	<b>4383</b>	<b>4393</b>	<b>4415</b>	<b>4404</b>
	<i>Space Available</i>	<i>-413</i>	<i>-468</i>	<i>-467</i>	232	222	200	211

\*Source: Office of Shared Accountability, Official Report of Enrollment by Grade and School; as of September 30, 2019

# Middle School Projections and Available Seats

School		Official 19–20	Enrollment Projections					
			20–21	21–22	22–23	23–24	24–25	25–26
Forest Oak MS	Program Capacity	955	955	955	955	955	955	955
	<b>Enrollment</b>	<b>950</b>	<b>954</b>	<b>981</b>	<b>975</b>	<b>989</b>	<b>971</b>	<b>976</b>
	<i>Space Available</i>	<i>5</i>	<i>1</i>	<i>-26</i>	<i>-20</i>	<i>-34</i>	<i>-16</i>	<i>-21</i>
Gaithersburg MS	Program Capacity	1009	1009	1009	1009	1009	1009	1009
	<b>Enrollment</b>	<b>877</b>	<b>897</b>	<b>935</b>	<b>927</b>	<b>931</b>	<b>934</b>	<b>959</b>
	<i>Space Available</i>	<i>132</i>	<i>112</i>	<i>74</i>	<i>82</i>	<i>78</i>	<i>75</i>	<i>50</i>
Cluster Total	Program Capacity	1964	1964	1964	1964	1964	1964	1964
	<b>Enrollment</b>	<b>1827</b>	<b>1851</b>	<b>1916</b>	<b>1902</b>	<b>1920</b>	<b>1905</b>	<b>1935</b>
	<i>Space Available</i>	<i>137</i>	<i>113</i>	<i>48</i>	<i>62</i>	<i>44</i>	<i>59</i>	<i>29</i>

\*Source: Office of Shared Accountability, Official Report of Enrollment by Grade and School; as of September 30, 2019



# Policy FAA

# Educational Facilities Planning

FAA

## POLICY BOARD OF EDUCATION OF MONTGOMERY COUNTY

Related Entries: ABA, ABC, ABC-RA, ACA, ACD, ACG, ACG-RA, ACG-RB,  
DNA, ECM, ECM-RA, FAA-RA, JEE, JEE-RA  
Responsible Office: Chief Operating Officer

### Educational Facilities Planning

#### A. PURPOSE

To affirm the Montgomery County Board of Education's commitment to continuing to provide high-quality facilities that support the educational programming needed to ensure that every Montgomery County Public Schools (MCPS) student is well-prepared for success consistent with the Board's core values of Learning, Relationships, Respect, Excellence, and Equity

To establish an educational facilities planning process that effectively anticipates MCPS educational facility needs and establishes a framework for making equitable and fiscally responsible facility decisions in an uncertain future, while considering instructional program priorities, physical condition of the schools, and the impact of under- or overutilized facilities on the educational program

To promote public understanding of MCPS educational facilities planning processes and provide opportunities for stakeholders to engage in, inform, and respond to those processes

To coordinate MCPS facilities planning processes with those of other units of local governments and municipalities in Montgomery County

#### B. BACKGROUND

Educational facilities planning is essential to identify the infrastructure needed to ensure success for every student. The Board has primary responsibility to plan for educational facilities that sustain high-quality MCPS educational programs while effectively responding to changes in student enrollment, educational programming, and physical plant infrastructure.

1 of 9

- <https://www.montgomeryschoolsmd.org/departments/policy/pdf/faa.pdf>

# Stakeholder Input (Section E)

- Use multiple strategies to obtain community input which may vary according to the nature, size, and scope of project
- Strategies may include, but not be limited to:
  - Focus groups
  - Task forces
  - Work groups
  - Roundtable discussion groups
  - Surveys
  - And other types of planning sessions

# Stakeholder Input (Section E)

- Superintendent directs staff to develop options to change school boundaries
- Staff develops options for community input to reflect a range of approaches to advance factors and provide rationale
- Seek input from multiple stakeholders to advise superintendent on staff-developed options

# Stakeholder Input (Section E)

- Superintendent directs staff to develop options to change school boundaries
- Staff develops options for community input to reflect a range of approaches to advance factors and provide rational
- Seek input from multiple stakeholders to advise superintendent on staff-developed options

# Policy Factors (Section G)

- Demographic Characteristics of Student Population
  - Analyses of options take into account the overall populations of affected schools
  - Options should especially strive to create a diverse student body
- Geography
  - Options should take into account the geographic proximity of communities to schools, as well as articulation, traffic, and transportation patterns, and topography

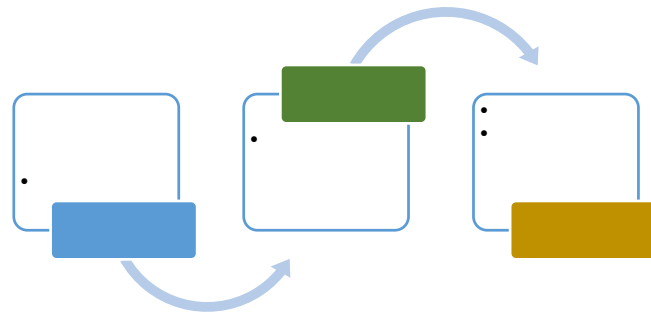
# Policy Factors (Section G)

- **Stability of School Assignment Over Time**
  - Options should result in stable assignments for as long a period as possible and consider recent assignments
- **Facility Utilization**
  - Plans should result in facility utilization in 80-100% range over the long term, whenever possible.
  - Shared use of a facility by more than one cluster may be the most feasible plan in some cases
  - Plans should be fiscally responsible

# Policy Factors (Section G)

- Superintendent will provide a rationale for each recommendation that demonstrates extent to which each factor is advanced
- While each factor will be considered, it may not be feasible to reconcile each and every recommendation with each and every factor.

# Boundary Process

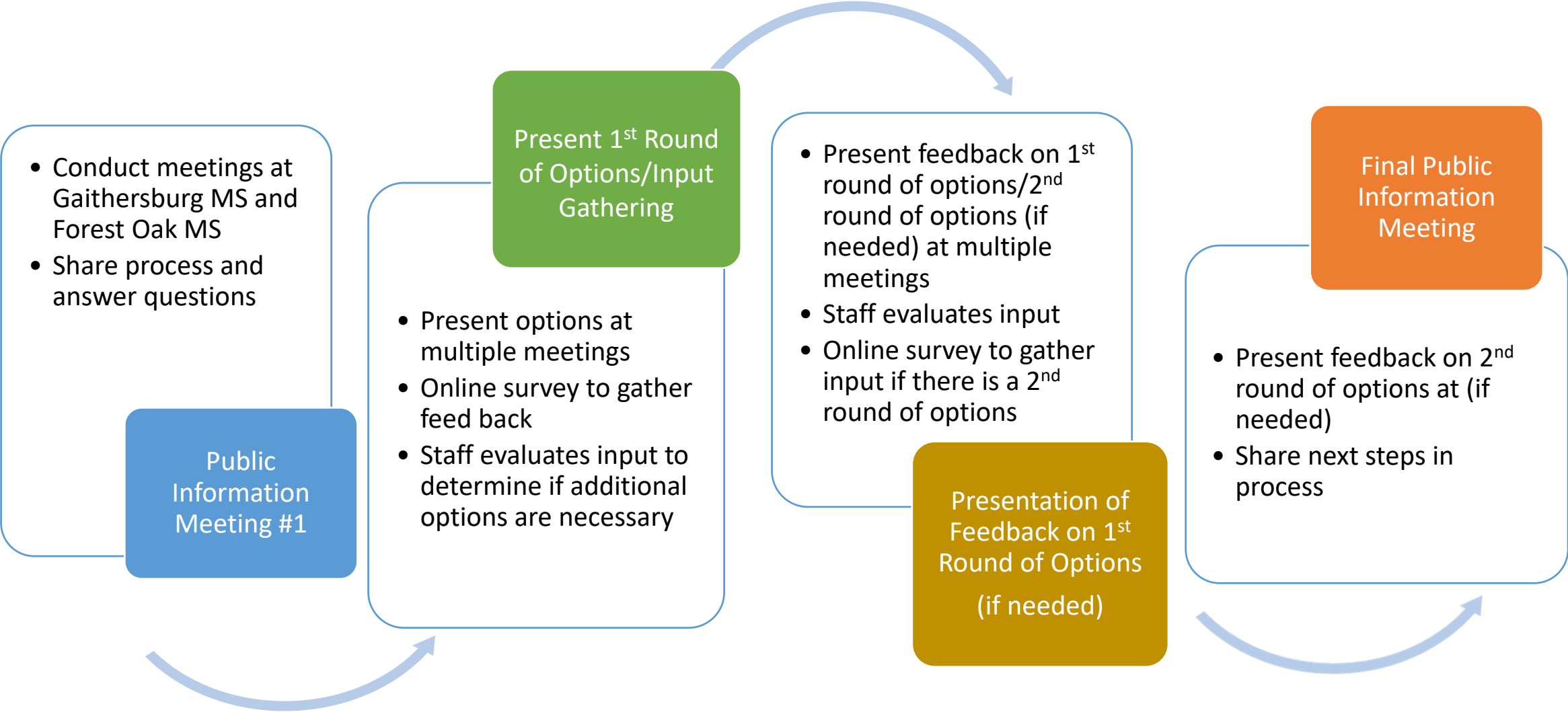




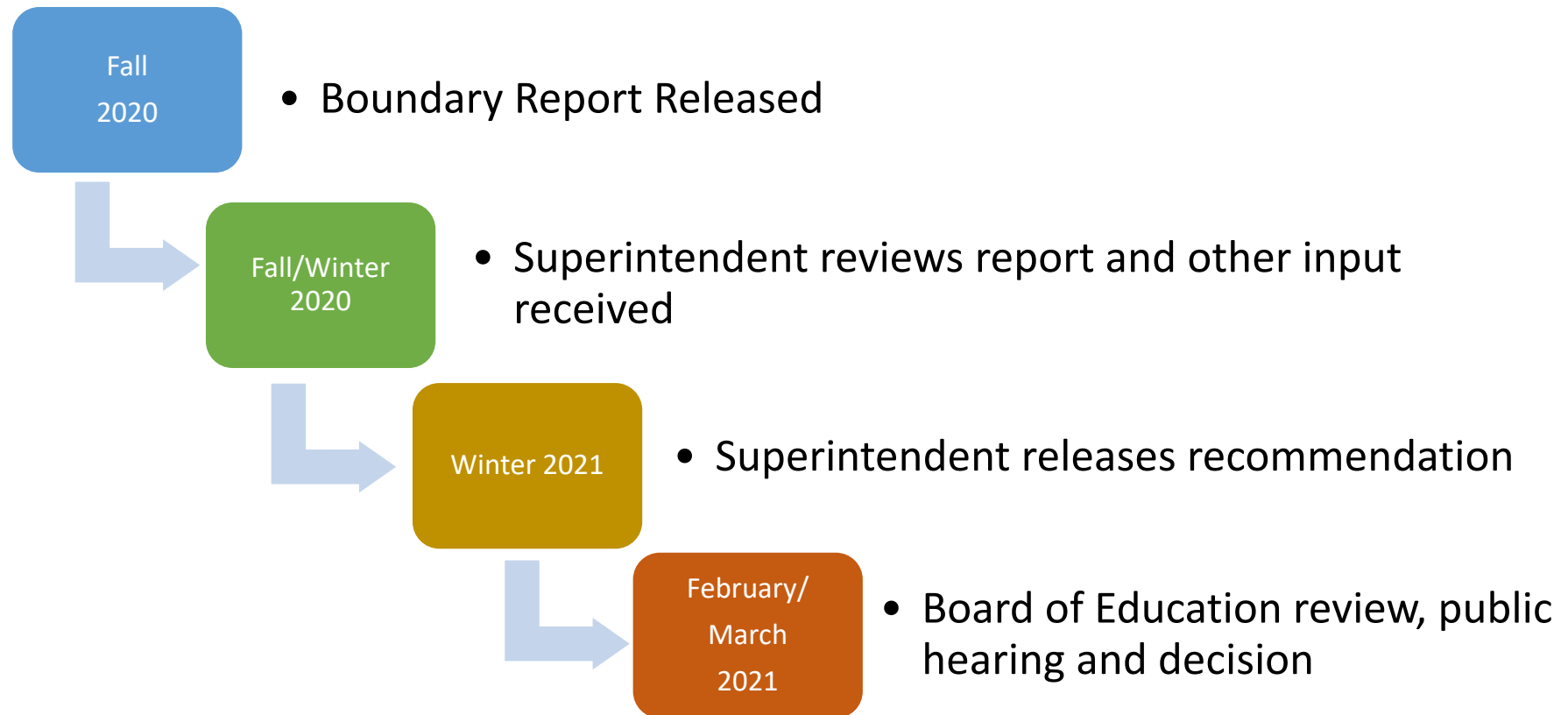
# Boundary Process

- Broad outreach using multiple strategies for obtaining community input which may vary according to the nature, size, and scope of the project
- Policy factors used by staff to create options
- Online surveys
- Community meetings to gather input
- Video of meeting/questions
- Letters to superintendent
- Staff evaluation of online surveys

# Boundary Process



# Next Steps



# Schedule of Meetings

Date	Action	Location
March 2	Public Information Meeting #1	Gaithersburg MS
March 3		Forest Oak MS
March 9 (snow date)		Gaithersburg MS
March 25	Presentation of 1st Round of Options	Gaithersburg MS
March 31		Forest Oak MS
April 2 (snow date)		Gaithersburg MS
April 15 (if needed)	Presentation of 2nd Round of Options	Forest Oak MS
April 20 (if needed)		Gaithersburg MS
May 4	Public Information Meeting #2	Gaithersburg MS
May 6		Forest Oak MS

# Questions



<https://www.montgomeryschoolsmd.org/departments/planning/gaithersburgcluster8boundarystudy.aspx>