

# Gaithersburg ES #8 Boundary Study Estudio de Límites Geográficos

1<sup>st</sup> Round of Options

Primera Ronda de Opciones

Division of Capital Planning and Real Estate

October 14, 2020

<https://www.montgomeryschoolsmd.org/departments/planning/gaithersburgcluster8boundarystudy.aspx>

# Agenda/Agenda

---

- Board of Education Resolution
  - Policy Factors
  - Guiding Parameters for Option Development
  - Current Information
  - Presentation of Options
  - Questions and Answers
  - Next Steps
- Resolución de la Junta de Educación
  - Factores de Póliza
  - Parámetros Guía para el Desarrollo de Opciones
  - Información Actual
  - Presentación de Opciones
  - Preguntas y Respuestas
  - Próximos Pasos



# Board of Education Resolution

## Resolución de la Junta de Educación

ADOPTED  
33

Office of the Superintendent of Schools  
MONTGOMERY COUNTY PUBLIC SCHOOLS  
Rockville, Maryland

November 26, 2019

### MEMORANDUM

To: Members of the Board of Education  
From: Jack R. Smith, Superintendent of Schools  
Subject: Boundary Study to Determine the Service Area for the Gaithersburg Cluster Elementary School #8 (Kelley Park Site)

Elementary enrollment has continued to grow in the Gaithersburg Cluster since 2007. Enrollment projections are expected to exceed capacities at several elementary schools in the cluster throughout the six-year planning period. Following the findings of the Gaithersburg Cluster Elementary School Capacity Study and a site selection committee to evaluate potential school sites in the Gaithersburg Cluster, the Board of Education approved the opening of Gaithersburg Cluster Elementary School #8 on the Kelley Park site to relieve overutilization in the cluster. The school is scheduled to open in September 2022.

Through our discussions about the new Gaithersburg Cluster Elementary School #8, strong interest has been expressed by the community and several Board of Education members that the boundary study be initiated and completed earlier in advance of the school opening to the degree possible. I understand the community's interest in knowing the school boundaries, and I am recommending that we conduct the boundary study in spring 2020, approximately 30 months prior to opening the school.

We also have heard interest from the community and the Board of Education in examining the middle school boundaries and articulation as part of this boundary study. I also am recommending that the middle schools be included in the scope of the boundary study for the new Gaithersburg Cluster Elementary School #8.

WHEREAS, The superintendent of schools recommended a boundary study to determine the service area for Gaithersburg Cluster Elementary School #8 (Kelley Park site), and

WHEREAS, On November 4 and 19, 2019, the Board of Education conducted work sessions on all capital and non-capital items in the Superintendent's Recommended FY 2021 Capital Budget and the FY 2021-2026 Capital Improvements Program, and

- Adopted November 26, 2019
- ES enrollment grown since 2007
- Several schools will exceed capacity
- After site selection, BOE selected Kelley Park for new school
- Based on community input, initiate boundary study early
- Adoptado el 26 de noviembre de 2019
- La matrícula de las escuelas primaria ha aumentado desde 2007
- Varias escuelas sobrepasaran su capacidad
- Después de la selección del sitio, BOE seleccionó Kelley Park para la nueva escuela
- Basado en la opinión de la comunidad, iniciar el estudio de perímetro temprano
- [http://gis.mcpsmd.org/boundarystudypdfs/GaithersburgES8\\_StudyBOEAdopted.pdf](http://gis.mcpsmd.org/boundarystudypdfs/GaithersburgES8_StudyBOEAdopted.pdf)

# Board of Education Resolution

## Resolución de la Junta de Educación

- Include all cluster elementary schools in the boundary study:
  - Gaithersburg ES                      Goshen ES                      Laytonsville ES
  - Rosemont ES                      Strawberry Knoll ES                      Summit Hall ES
  - Washington Grove ES
- Incluir todas las escuelas primarias agrupadas en el estudio de perímetro:
  - Gaithersburg ES                      Goshen ES                      Laytonsville ES
  - Rosemont ES                      Strawberry Knoll ES                      Summit Hall ES
  - Washington Grove ES

# Board of Education Resolution

## Resolución de la Junta de Educación

- Include Forest Oak and Gaithersburg middle schools in the boundary study to review the middle school articulation patterns for the Gaithersburg Cluster ES #8
- Incluir a las escuelas intermedias Forest Oak y Gaithersburg en el estudio de perímetro para revisar los patrones de articulación de la escuela intermedia para Gaithersburg Cluster ES # 8

# Board of Education Resolution

## Resolution de la Junta de Educación

- Conduct boundary study in spring 2020 with a report be issued in fall 2020
- **Due to Covid-19 Pandemic, study suspended until fall 2020, report will be issued in winter 2020**
- Superintendent's recommendation in winter 2021 with Board of Education Action in March 2021
  
- Realizar un estudio de perímetro en la primavera del año 2020 con un informe que se publicará en el otoño del año 2020
  - **Debido a la pandemia Covid-19, el estudio fue suspendido hasta el otoño del año 2020, el informe se publicara en el invierno del año 2020**
- Recomendación del superintendente en el invierno del año 2021 con Acción de la Junta de Educación en marzo del año 2021

# Policy FAA Educational Facilities Planning

- Boundary process guided by Policy FAA and Regulation FAA-RA
- Four policy factors

FAA

## POLICY BOARD OF EDUCATION OF MONTGOMERY COUNTY

Related Entries: ABA, ABC, ABC-RA, ACA, ACD, ACG, ACG-RA, ACG-RB, DNA, ECM, ECM-RA, FAA-RA, JEE, JEE-RA  
Responsible Office: Chief Operating Officer

### Educational Facilities Planning

#### A. PURPOSE

To affirm the Montgomery County Board of Education's commitment to continuing to provide high-quality facilities that support the educational programming needed to ensure that every Montgomery County Public Schools (MCPS) student is well-prepared for success consistent with the Board's core values of Learning, Relationships, Respect, Excellence, and Equity

To establish an educational facilities planning process that effectively anticipates MCPS educational facility needs and establishes a framework for making equitable and fiscally responsible facility decisions in an uncertain future, while considering instructional program priorities, physical condition of the schools, and the impact of under- or overutilized facilities on the educational program

To promote public understanding of MCPS educational facilities planning processes and provide opportunities for stakeholders to engage in, inform, and respond to those processes

To coordinate MCPS facilities planning processes with those of other units of local governments and municipalities in Montgomery County

#### B. BACKGROUND

Educational facilities planning is essential to identify the infrastructure needed to ensure success for every student. The Board has primary responsibility to plan for educational facilities that sustain high-quality MCPS educational programs while effectively responding to changes in student enrollment, educational programming, and physical plant infrastructure.

1 of 9

# Póliza FAA Planificación de Instalaciones Educativas

- Proceso de perímetro guiado por la póliza FAA y el Reglamento FAA-RA
- Cuatro factores de póliza

<https://www.montgomeryschoolsmd.org/departments/policy/pdf/faa.pdf>

<https://www.montgomeryschoolsmd.org/departments/policy/pdf/faara.pdf>

# Policy Factors / Factores de Póliza

- **Demographic Characteristics of Student Population**
  - Analyses of options take into account the overall populations of affected schools
  - Options should especially strive to create a diverse student body
- **Características Demográficas de la Población Estudiantil**
  - Los análisis de opciones tienen en cuenta la población general de las escuelas afectadas
  - Las opciones deben esforzarse especialmente por crear un cuerpo estudiantil diverso



# Policy Factors / Factores de Póliza

- **Geography**

- Options should take into account the geographic proximity of communities to schools, as well as articulation, traffic, and transportation patterns, and topography

- **Geografía**

- Las opciones deben tener en cuenta la proximidad geográfica de las comunidades a las escuelas, así como la articulación, el tráfico y los patrones de transporte, y la topografía

# Policy Factors / Factores de Póliza

- **Stability of School Assignment Over Time**
  - Options should result in stable assignments for as long a period as possible and consider recent assignments
- **Estabilidad de la Asignación Escolar a Largo Plazo**
  - Las opciones deben resultar en asignaciones estables durante el mayor tiempo posible y considerar asignaciones recientes

# Policy Factors / Factores de Póliza

- **Facility Utilization**

- Plans should result in facility utilization in 80-100% range over the long term, whenever possible.
- Shared use of a facility by more than one cluster may be the most feasible plan in some cases
- Plans should be fiscally responsible

- **Utilización del Edificio**

- Los planes deben dar como resultado la utilización del edificio en un intervalo de 80-100% a largo plazo, siempre que sea posible.
- El uso compartido de un edificio por más de un grupo puede ser el plan más factible en algunos casos
- Los planes deben ser fiscalmente responsables

# Guiding Parameters for Option Development

## Parámetros Guía para el Desarrollo de Opciones

- **Four policy factors used to develop options**
  - Demographic Characteristics of Student Population
  - Geography
  - Facility Utilization
  - Stability factor
- **Cuatro factores de póliza utilizados para desarrollar opciones**
  - Características demográficas de la población estudiantil
  - Geografía
  - Utilización de edificios
  - Factor de estabilidad

# Guiding Parameters for Option Development

- Maximize walkers
- Grandfather Grade 5 students at all elementary schools
- Grandfather Grade 8 students at middle schools
- Due to geography and driving distances, not all elementary schools will be relieved of space deficits through this boundary study
- Try to minimize island assignments (non-contiguous) boundary assignments when possible

## Parámetros Guía para el Desarrollo de Opciones

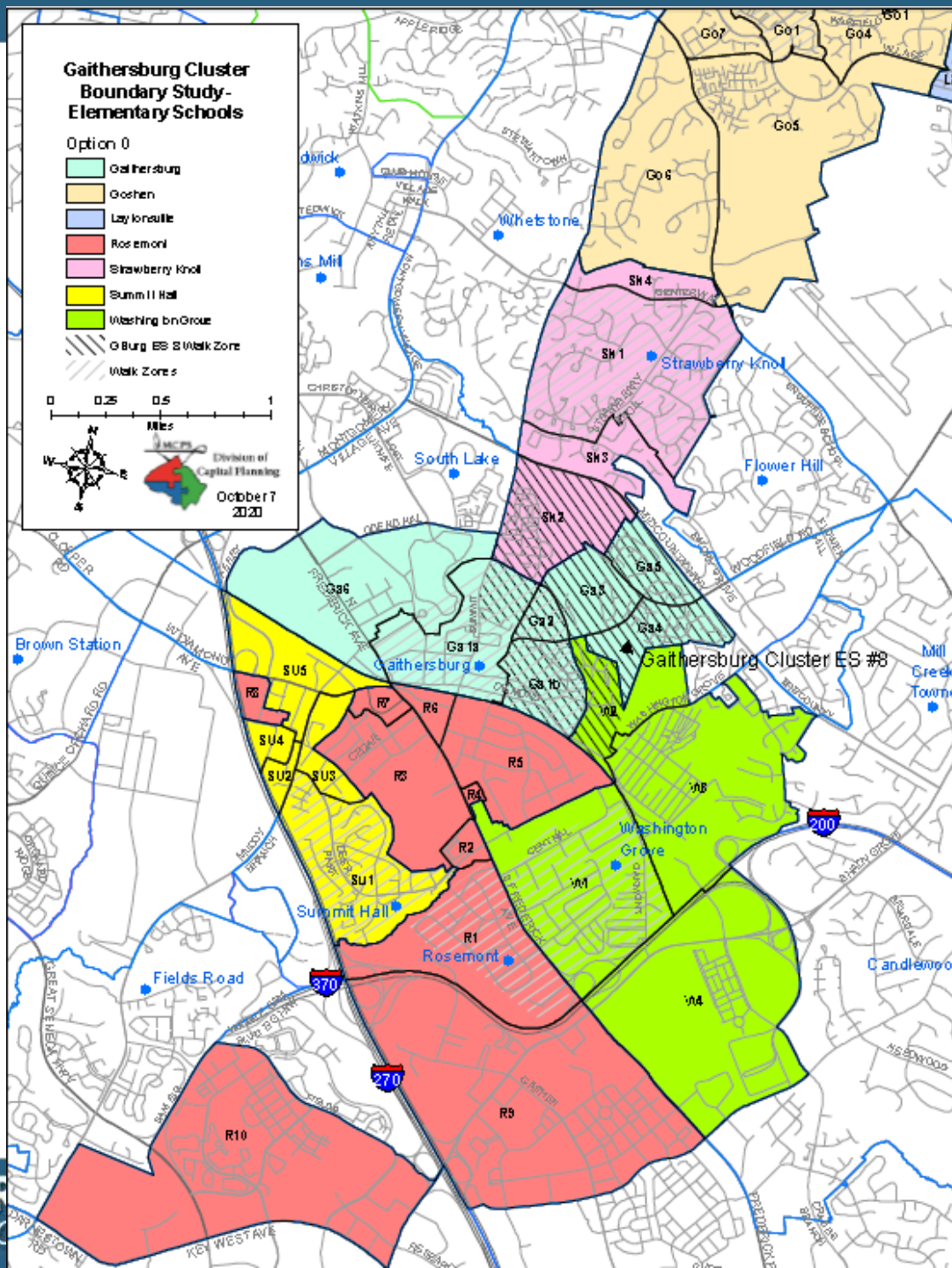
- Maximizar estudiantes caminantes
- Mantener los estudiantes de quinto grado de todas las escuelas primarias en sus escuelas actual el año de implementación
- Mantener los estudiantes de octavo grado en escuelas intermedias en sus escuelas actual el año de implementación
- Debido a la geografía y las distancias de conducción, no todas las escuelas primarias se librarán de los déficits de espacio a través de este estudio de perímetro.
- Tratar de minimizar asignaciones de perímetro aisladas (no contiguas) cuando sea posible

# Current Information

# Información Actual

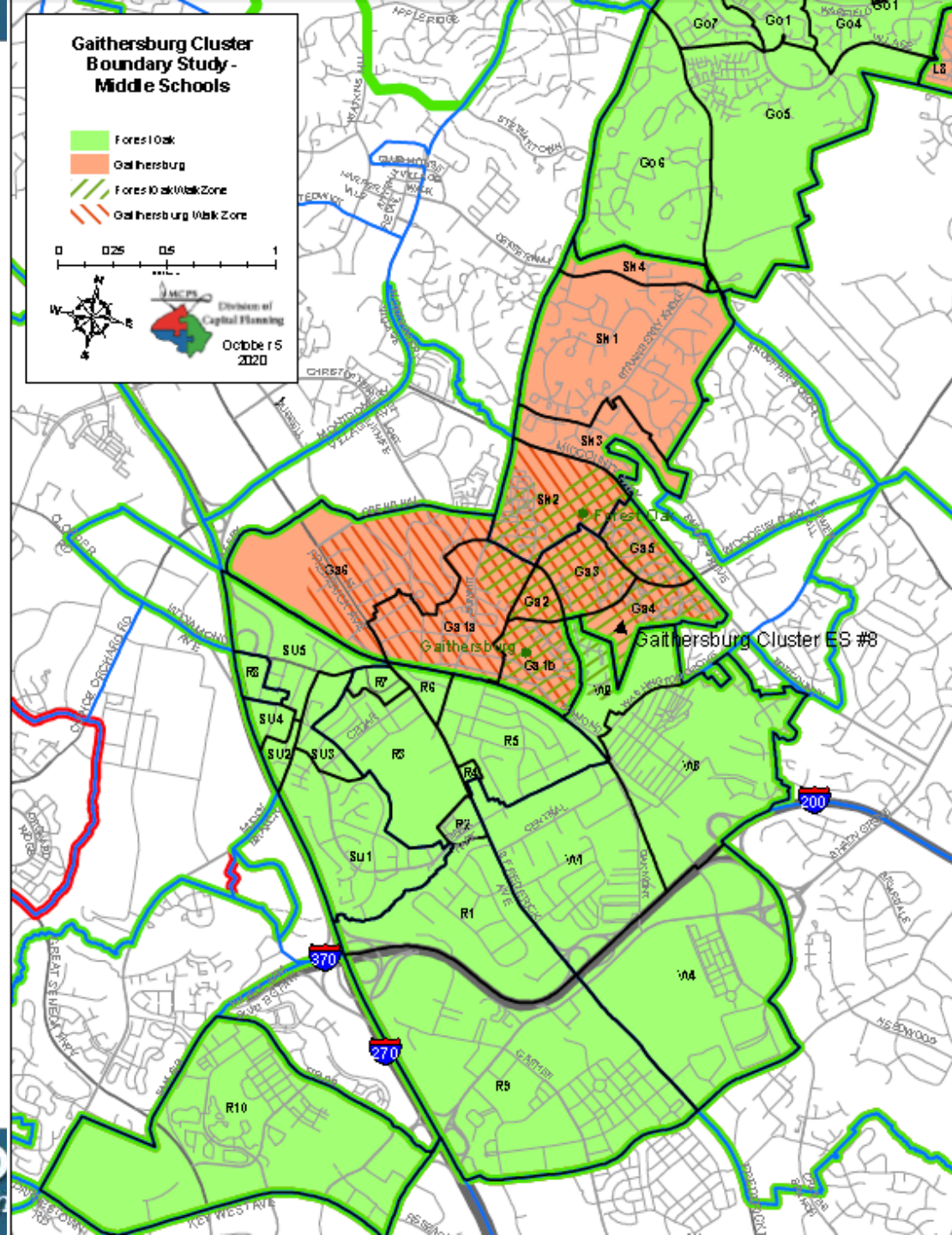
# Map of Study Area Elementary Schools

## Mapa de las Escuelas Primarias en el Área de Estudio



# Map of Study Area Middle Schools

Mapa de las Escuelas Intermedias en el Área de estudio





# Interactive Map/Mapa Interactivo

• <https://mcpsgis.maps.arcgis.com/apps/PublicInformation/index.html?appid=a35d966d460046629d4c1d810ddefe35>

Type your address here/escrība su direcci3n aquđ

The screenshot shows a web-based GIS application interface. At the top, there are navigation icons for Legend, About, and Layers. The main map area displays various school districts color-coded according to the legend: Laytonsville (light blue), Rosemont (red), Gaithersburg (teal), Goshen (orange), Summit Hall (yellow), Strawberry Knoll (purple), and Washington Grove (green). Specific schools are labeled, such as Goshen ES, Strawberry Knoll ES, Forest Oak MS, Gaithersburg Cluster ES #8, Washington Grove ES, and Rosemont ES. A search bar at the top right contains the text 'Gaithersburg ES # 8 Boundary Stu...'. A red arrow points from the text 'Type your address here/escrība su direcci3n aquđ' to this search bar. Other map features include a 'Print' button, a 'Layers' panel on the left, and a 'Home' button. The bottom of the map shows the Esri logo and the text 'City of Gaithersburg, Maryland, MNCPPC, VITA, Esri, H...'. The map also shows geographical features like 'Muddy Branch', 'Rock Creek', and 'North Branch Rock Creek'.

# ES Projections and Available Seats

## Proyecciones y Asientos Disponibles en Escuelas Primarias

School		Official 19-20	Enrollment Projections					
			20-21	21-22	22-23	23-24	24-25	25-26
Gaithersburg ES	Program Capacity	737	737	737	737	737	737	737
	<b>Enrollment</b>	<b>865</b>	<b>869</b>	<b>878</b>	<b>890</b>	<b>887</b>	<b>884</b>	<b>883</b>
	<i>Space Available</i>	<i>-128</i>	<i>-132</i>	<i>-141</i>	<i>-153</i>	<i>-150</i>	<i>-147</i>	<i>-146</i>
Gaithersburg ES #8	Program Capacity				740	740	740	740
	<b>Enrollment</b>				<b>0</b>	<b>0</b>		<b>0</b>
	<i>Space Available</i>				740	740	740	740
Goshen ES	Program Capacity	594	594	594	594	594	594	594
	<b>Enrollment</b>	<b>571</b>	<b>549</b>	<b>536</b>	<b>540</b>	<b>541</b>	<b>548</b>	<b>561</b>
	<i>Space Available</i>	<i>23</i>	<i>45</i>	<i>58</i>	<i>54</i>	<i>53</i>	<i>46</i>	<i>33</i>
Laytonsville ES	Program Capacity	447	447	447	447	447	447	447
	<b>Enrollment</b>	<b>392</b>	<b>400</b>	<b>403</b>	<b>420</b>	<b>438</b>	<b>432</b>	<b>421</b>
	<i>Space Available</i>	<i>55</i>	<i>47</i>	<i>44</i>	<i>27</i>	<i>9</i>	<i>15</i>	<i>26</i>
Rosemont ES	Program Capacity	568	568	568	568	568	568	568
	<b>Enrollment</b>	<b>645</b>	<b>654</b>	<b>662</b>	<b>662</b>	<b>674</b>	<b>675</b>	<b>671</b>
	<i>Space Available</i>	<i>-77</i>	<i>-86</i>	<i>-94</i>	<i>-94</i>	<i>-106</i>	<i>-107</i>	<i>-103</i>
Strawberry Knoll ES	Program Capacity	459	459	459	459	459	459	459
	<b>Enrollment</b>	<b>651</b>	<b>668</b>	<b>666</b>	<b>667</b>	<b>665</b>	<b>676</b>	<b>682</b>
	<i>Space Available</i>	<i>-192</i>	<i>-209</i>	<i>-207</i>	<i>-208</i>	<i>-206</i>	<i>-217</i>	<i>-223</i>
Summit Hall ES	Program Capacity	457	457	457	457	457	457	457
	<b>Enrollment</b>	<b>702</b>	<b>729</b>	<b>726</b>	<b>732</b>	<b>721</b>	<b>723</b>	<b>704</b>
	<i>Space Available</i>	<i>-245</i>	<i>-272</i>	<i>-269</i>	<i>-275</i>	<i>-264</i>	<i>-266</i>	<i>-247</i>
Washington Grove ES	Program Capacity	613	613	613	613	613	613	613
	<b>Enrollment</b>	<b>462</b>	<b>474</b>	<b>471</b>	<b>472</b>	<b>467</b>	<b>477</b>	<b>482</b>
	<i>Space Available</i>	<i>151</i>	<i>139</i>	<i>142</i>	<i>141</i>	<i>146</i>	<i>136</i>	<i>131</i>
Cluster Total	Program Capacity	3875	3875	3875	4615	4615	4615	4615
	<b>Enrollment</b>	<b>4288</b>	<b>4343</b>	<b>4342</b>	<b>4383</b>	<b>4393</b>	<b>4415</b>	<b>4404</b>
	<i>Space Available</i>	<i>-413</i>	<i>-468</i>	<i>-467</i>	<i>232</i>	<i>222</i>	<i>200</i>	<i>211</i>

# Middle School Projections and Available Seats

## Proyecciones y Asientos Disponibles en Escuelas Intermediarias

School		Official 19–20	Enrollment Projections					
			20–21	21–22	22–23	23–24	24–25	25–26
Forest Oak MS	Program Capacity	955	955	955	955	955	955	955
	<b>Enrollment</b>	<b>950</b>	<b>954</b>	<b>981</b>	<b>975</b>	<b>989</b>	<b>971</b>	<b>976</b>
	<i>Space Available</i>	5	1	-26	-20	-34	-16	-21
Gaithersburg MS	Program Capacity	1009	1009	1009	1009	1009	1009	1009
	<b>Enrollment</b>	<b>877</b>	<b>897</b>	<b>935</b>	<b>927</b>	<b>931</b>	<b>934</b>	<b>959</b>
	<i>Space Available</i>	132	112	74	82	78	75	50
Cluster Total	Program Capacity	1964	1964	1964	1964	1964	1964	1964
	<b>Enrollment</b>	<b>1827</b>	<b>1851</b>	<b>1916</b>	<b>1902</b>	<b>1920</b>	<b>1905</b>	<b>1935</b>
	<i>Space Available</i>	137	113	48	62	44	59	29

# Options Opciones



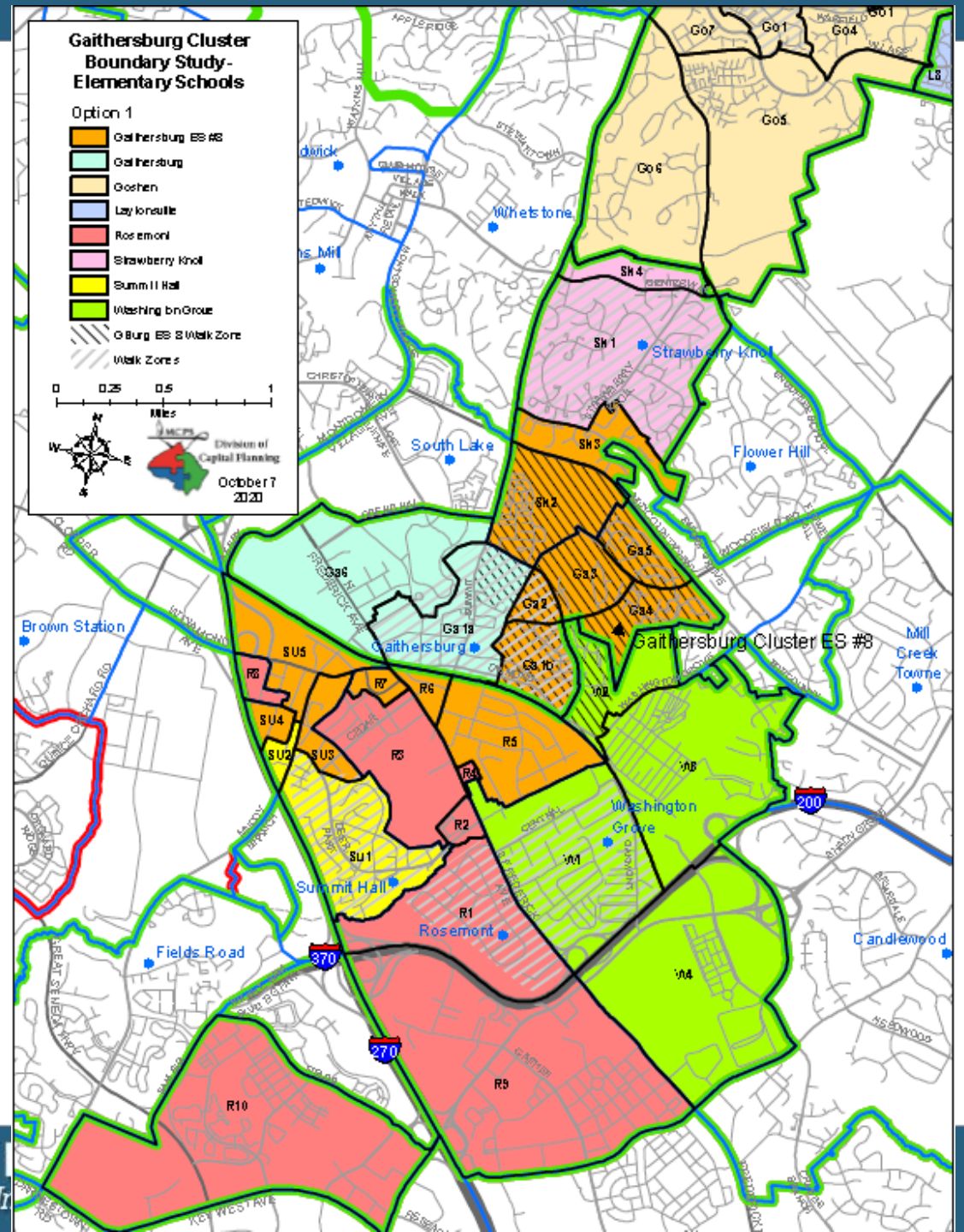
# Option 1 / Opción 1

## Proposed ES Reassignments

- Reassign Zones GA1b, GA2, GA3, GA4, and GA5 from Gaithersburg ES to Gaithersburg ES #8
- Reassign Zones R5, R6, and R7 from Rosemont ES to Gaithersburg ES #8

## Reasignaciones Propuestas Para Escuelas Primarias

- Reasigne las zonas GA1b, GA2, GA3, GA4 y GA5 de Gaithersburg ES a Gaithersburg ES # 8
- Reasignar las zonas R5, R6 y R7 de Rosemont ES a Gaithersburg ES # 8



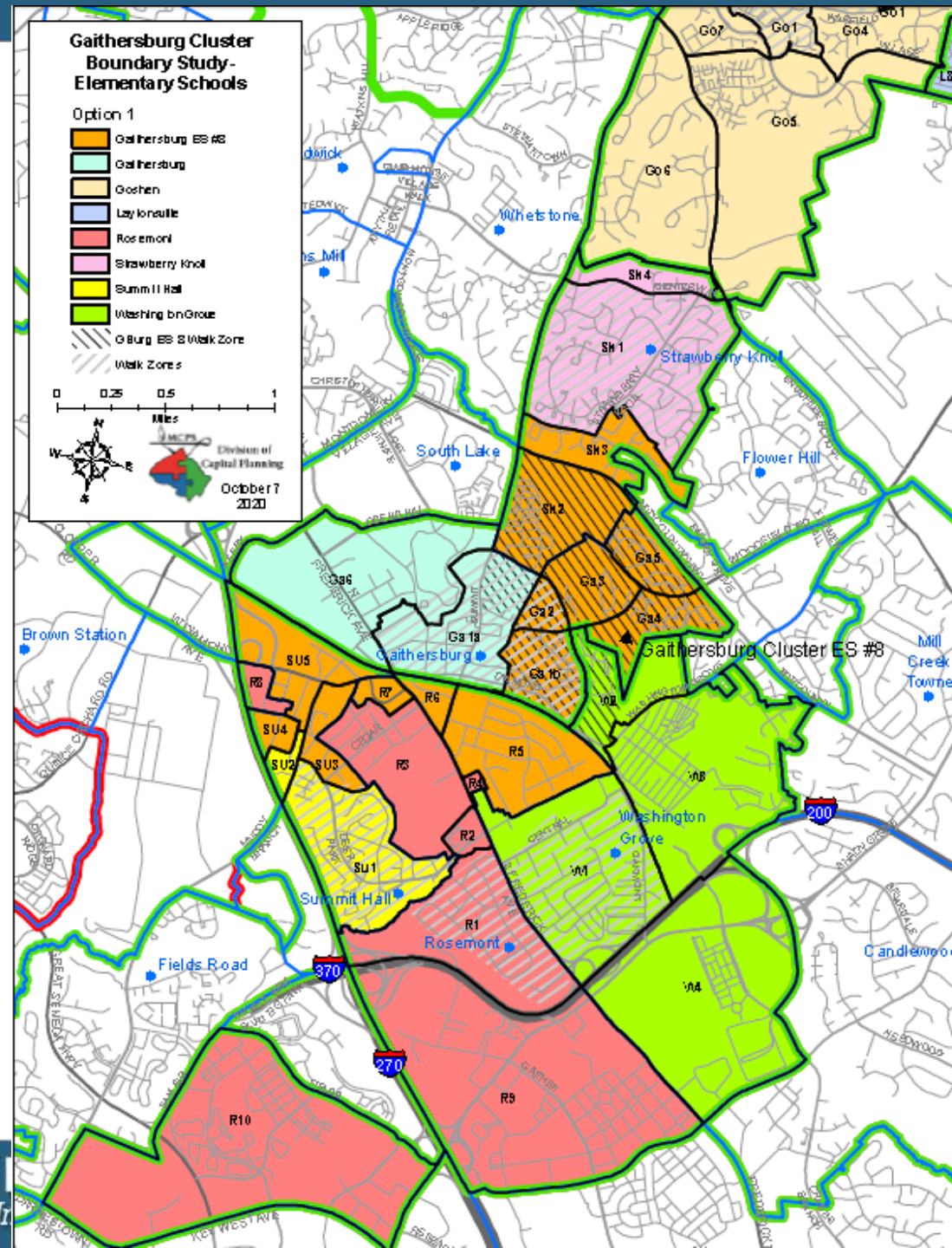
# Option 1 / Opción 1

## Proposed ES Reassignments

- Reassign Zones SK2 and SK3 from Strawberry Knoll ES to Gaithersburg ES #8
- Reassign Zones SU3, SU4, and SU5 from Summit Hall ES to Gaithersburg ES #8

## Reasignaciones Propuestas Para Escuelas Primarias

- Reasignar las Zonas SK2 y SK3 de Strawberry Knoll ES a Gaithersburg ES # 8
- Reasignar las zonas SU3, SU4 y SU5 de Summit Hall ES a Gaithersburg ES # 8



# Option 1 Elementary Schools

# Opción 1 Escuelas Primarias

School					2019-2020						
					Race/Ethnic Composition						
	2022-23	2023-24	2024-25	2025-26	% Afr. Amer.	% Asian	% Hispanic	% White	% 2 or More	% FARMS	% ESOL
<b>Gaithersburg Elementary School</b>											
<b>Maximum Number of Seats= 737</b>											
<b><u>No Change:</u></b>											
<b>Number of Students</b>	890	887	884	883	14.7%	1.8%	79.1%	2.9%	1.4%	85.0%	49.9%
<i>Percent of Building Occupied</i>	121%	120%	120%	120%							
<i>Available Seats</i>	-153	-150	-147	-146							
<b><u>With Change:</u></b>											
<b>Number of Students</b>	721	688	693	692	15.6%	1.1%	81.2%	1.2%	0.9%	87.7%	52.7%
<i>Percent of Building Occupied</i>	98%	93%	94%	94%							
<i>Available Seats</i>	16	49	44	45							
<b>Gaithersburg Elementary School #8</b>											
<b>Maximum Number of Seats= 740</b>											
<b><u>With Change:</u></b>											
<b>Number of Students</b>	661	759	753	732	22.5%	6.8%	60.0%	7.5%	3.2%	70.3%	46.3%
<i>Percent of Building Occupied</i>	89%	103%	102%	99%							
<i>Available Seats</i>	79	-19	-13	8							
<b>Rosemont Elementary School</b>											
<b>Maximum Number of Seats= 568</b>											
<b><u>No Change:</u></b>											
<b>Number of Students</b>	662	674	675	671	30.1%	9.1%	46.7%	8.2%	5.7%	58.8%	38.9%
<i>Percent of Building Occupied</i>	117%	119%	119%	118%							
<i>Available Seats</i>	-94	-106	-107	-103							
<b><u>With Change:</u></b>											
<b>Number of Students</b>	494	472	462	458	32.2%	10.8%	41.3%	8.3%	7.4%	52.8%	32.2%
<i>Percent of Building Occupied</i>	87%	83%	81%	81%							
<i>Available Seats</i>	74	96	106	110							

# Option 1 Elementary Schools

# Opción 1 Escuelas Primarias

School					2019-2020						
					Race/Ethnic Composition						
	2022-23	2023-24	2024-25	2025-26	% Afr. Amer.	% Asian	% Hispanic	% White	% 2 or More	% FARMS	% ESOL
<b>Strawberry Knoll Elementary School</b>											
<b>Maximum Number of Seats=</b>	<b>459</b>										
<b><u>No Change:</u></b>											
<b>Number of Students</b>	<b>667</b>	<b>665</b>	<b>676</b>	<b>682</b>	<b>25.8%</b>	<b>11.2%</b>	<b>43.6%</b>	<b>12.9%</b>	<b>6.1%</b>	<b>41.5%</b>	<b>22.9%</b>
<i>Percent of Building Occupied</i>	145%	145%	147%	149%							
<i>Available Seats</i>	-208	-206	-217	-223							
<b><u>With Change:</u></b>											
<b>Number of Students</b>	<b>573</b>	<b>554</b>	<b>565</b>	<b>571</b>	<b>21.1%</b>	<b>8.7%</b>	<b>51.9%</b>	<b>12.4%</b>	<b>5.9%</b>	<b>44.3%</b>	<b>24.7%</b>
<i>Percent of Building Occupied</i>	125%	121%	123%	124%							
<i>Available Seats</i>	-114	-95	-106	-112							
<b>Summit Hall Elementary School</b>											
<b>Maximum Number of Seats=</b>	<b>457</b>										
<b><u>No Change:</u></b>											
<b>Number of Students</b>	<b>732</b>	<b>721</b>	<b>723</b>	<b>704</b>	<b>17.9%</b>	<b>3.0%</b>	<b>74.5%</b>	<b>2.6%</b>	<b>1.9%</b>	<b>79.8%</b>	<b>61.3%</b>
<i>Percent of Building Occupied</i>	160%	158%	158%	154%							
<i>Available Seats</i>	-275	-264	-266	-247							
<b><u>With Change:</u></b>											
<b>Number of Students</b>	<b>544</b>	<b>524</b>	<b>535</b>	<b>537</b>	<b>18.1%</b>	<b>3.3%</b>	<b>74.3%</b>	<b>2.9%</b>	<b>1.4%</b>	<b>78.8%</b>	<b>62.1%</b>
<i>Percent of Building Occupied</i>	119%	115%	117%	118%							
<i>Available Seats</i>	-87	-67	-78	-80							



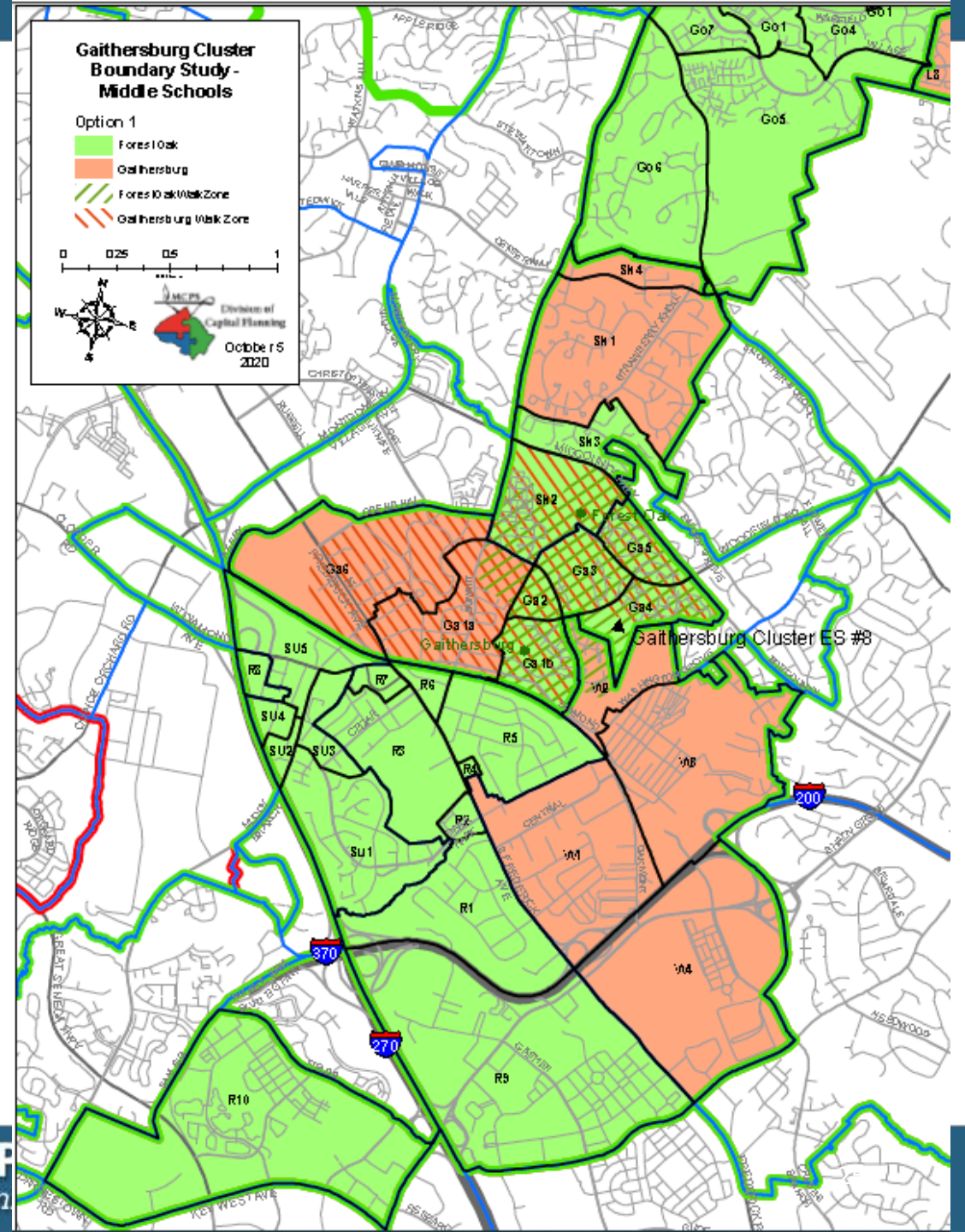
# Option 1 / Opción 1

## Proposed Middle School Reassignments

- Assign Gaithersburg ES #8 to Forest Oak MS
- Reassign Washington Grove ES from Forest Oak MS to Gaithersburg MS

## Reasignaciones Propuestas Para Escuelas Intermediarias

- Asignar Gaithersburg ES #8 a Forest Oak MS
- Reasignar Washington Grove ES de Forest Oak MS a Gaithersburg MS



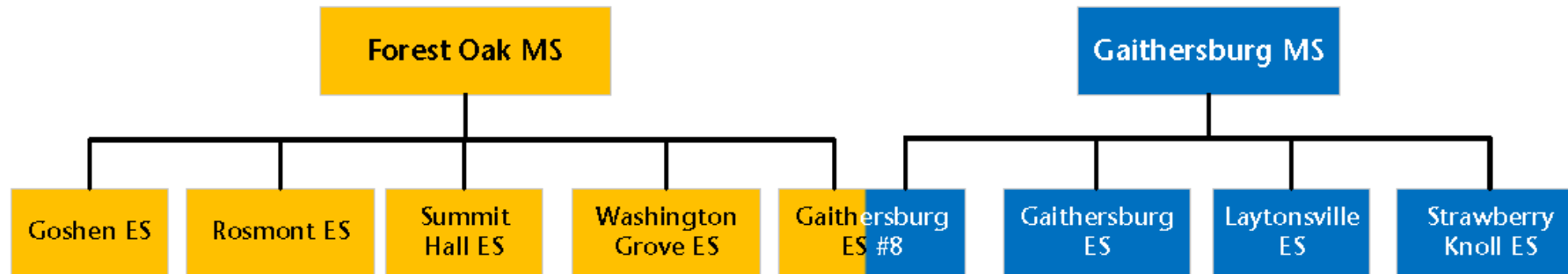
# Option 1 Middle Schools

## Opción 1 Escuelas Intermediarias

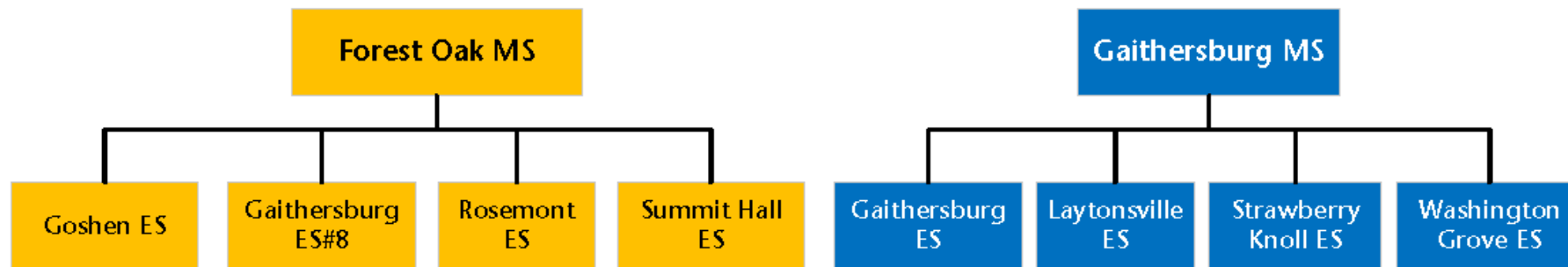
School					2019-2020						
					Race/Ethnic Composition					%	%
	2022-23	2023-24	2024-25	2025-26	% Afr. Amer.	% Asian	% Hispanic	% White	% 2 or More	FARMS	ESOL
<b>Forest Oak Middle School</b>											
Maximum Number of Seats= 955											
<u>No Change:</u>											
Number of Students	975	989	971	976	24.0%	5.5%	57.6%	10.0%	2.7%	57.1%	20.9%
Percent of Building Occupied	102%	104%	102%	102%							
Available Seats	-20	-34	-16	-21							
<u>With Change:</u>											
Number of Students	962	973	984	973	24.4%	6.4%	56.0%	9.4%	3.8%	54.4%	20.6%
Percent of Building Occupied	101%	102%	103%	102%							
Available Seats	-7	-18	-29	-18							
<b>Gaithersburg Middle School</b>											
Maximum Number of Seats= 1,009											
<u>No Change:</u>											
Number of Students	975	989	971	976	20.5%	7.1%	51.7%	14.9%	5.7%	44.7%	21.3%
Percent of Building Occupied	97%	98%	96%	97%							
Available Seats	34	20	38	33							
<u>With Change:</u>											
Number of Students	940	947	921	962	20.1%	6.0%	53.5%	15.8%	4.6%	47.6%	21.8%
Percent of Building Occupied	93%	94%	91%	95%							
Available Seats	69	62	88	47							

# Option 1

**No Middle School Boundary Change Assignments**  
(Gaithersburg ES #8 would split articulate to both middle schools)



**With Middle School Change Assignments**  
(Straight articulation to Forest Oak MS for Gaithersburg ES #8)



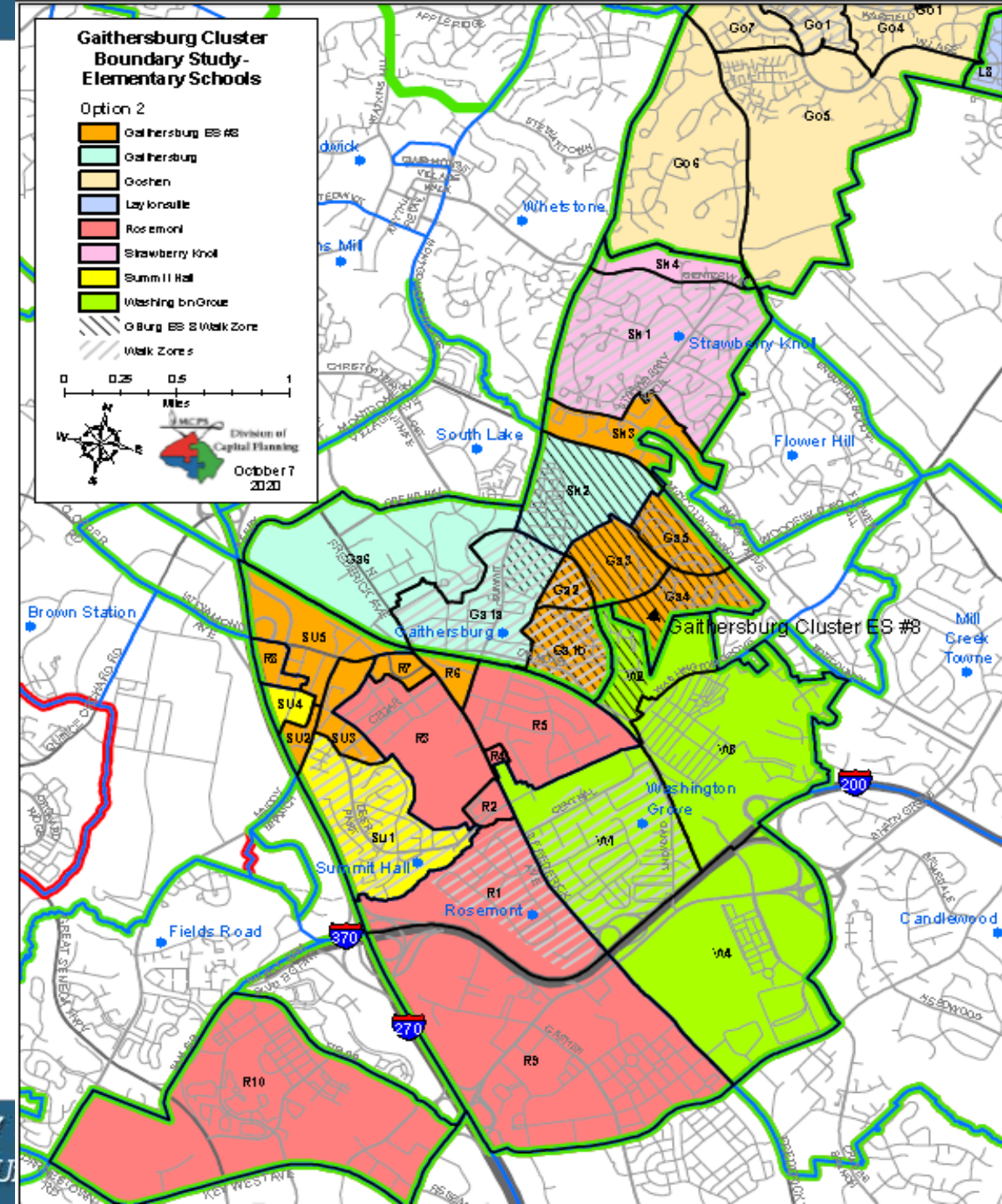
# Option 2 / Opción 2

## Proposed ES Reassignments

- Reassign Zones GA1b, GA2, GA3, GA4, and GA5 from Gaithersburg ES to Gaithersburg ES #8
- Reassign SK2 from Strawberry Knoll ES to Gaithersburg ES

## Reasignaciones Propuestas Para Escuelas Primarias

- Reasignar las zonas GA1b, GA2, GA3, GA4 y GA5 de Gaithersburg ES a Gaithersburg ES # 8
- Reasignar SK2 de Strawberry Knoll ES a Gaithersburg ES



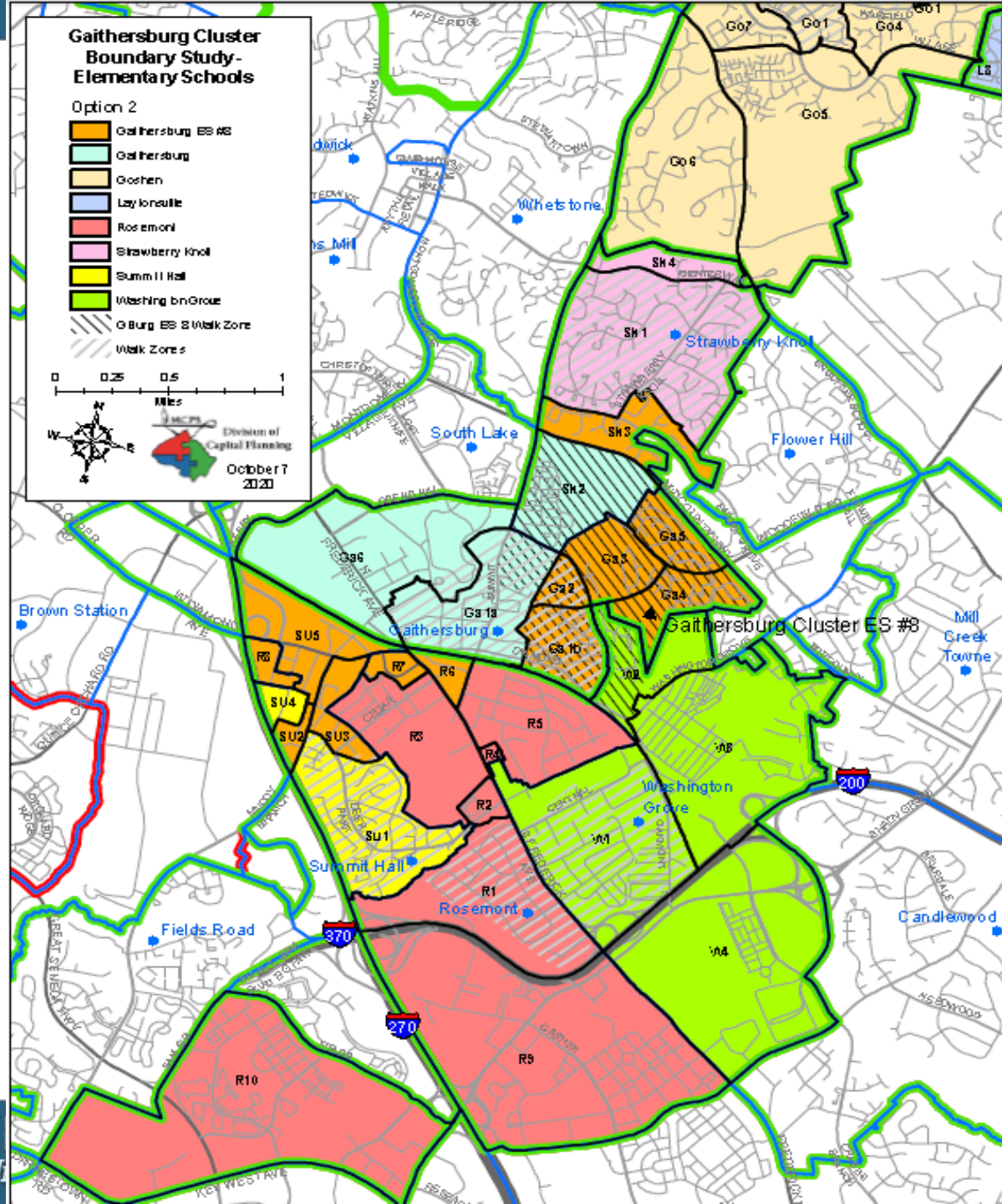
# Option 2 / Opción 2

## Proposed ES Reassignments

- Reassign Zones R6, R7, and R8 from Rosemont ES to Gaithersburg ES #8
- Reassign Zones SK3 from Strawberry Knoll ES to Gaithersburg ES #8
- Reassign Zones SU2, SU3, and SU5 from Summit Hall ES to Gaithersburg ES #8

## Reasignaciones Propuestas Para Escuelas Primarias

- Reasignar las zonas R6, R7 y R8 de Rosemont ES a Gaithersburg ES # 8
- Reasignar Zonas SK3 de Strawberry Knoll ES a Gaithersburg ES # 8
- Reasignar las zonas SU2, SU3 y SU5 de Summit Hall ES a Gaithersburg ES # 8



# Option 2 Elementary Schools

# Opción 2 Escuelas Primarias

School					2019-2020						
					Race/Ethnic Composition					% FARMS	% ESOL
	2022-23	2023-24	2024-25	2025-26	% Afr. Amer.	% Asian	% Hispanic	% White	% 2 or More		
<b>Gaithersburg Elementary School</b>											
Maximum Number of Seats= 737											
<u>No Change:</u>											
Number of Students	890	887	884	883	14.7%	1.8%	79.1%	2.9%	1.4%	85.0%	49.9%
Percent of Building Occupied	121%	120%	120%	120%							
Available Seats	-153	-150	-147	-146							
<u>With Change:</u>											
Number of Students	764	738	742	741	18.9%	2.8%	74.1%	2.5%	1.7%	82.1%	48.0%
Percent of Building Occupied	104%	100%	101%	101%							
Available Seats	-27	-1	-5	-4							
<b>Gaithersburg Elementary School #8</b>											
Maximum Number of Seats= 740											
<u>With Change:</u>											
Number of Students	634	739	731	721	22.0%	5.2%	66.6%	4.6%	1.6%	75.4%	51.3%
Percent of Building Occupied	86%	100%	99%	97%							
Available Seats	106	1	9	19							
<b>Rosemont Elementary School</b>											
Maximum Number of Seats= 568											
<u>No Change:</u>											
Number of Students	662	674	675	671	30.1%	9.1%	46.7%	8.2%	5.7%	58.8%	38.9%
Percent of Building Occupied	117%	119%	119%	118%							
Available Seats	-94	-106	-107	-103							
<u>With Change:</u>											
Number of Students	497	479	479	475	27.9%	11.1%	41.9%	10.9%	8.1%	50.7%	32.1%
Percent of Building Occupied	88%	84%	84%	84%							
Available Seats	71	89	89	93							

# Option 2 Elementary Schools

# Opción 2 Escuelas Primarias

School					2019–2020						
					Race/Ethnic Composition						
	2022–23	2023–24	2024–25	2025–26	% Afr. Amer.	% Asian	% Hispanic	% White	% 2 or More	% FARMS	% ESOL
<b>Strawberry Knoll Elementary School</b>											
Maximum Number of Seats=	459										
<b><u>No Change:</u></b>											
Number of Students	667	665	676	682	25.8%	11.2%	43.6%	12.9%	6.1%	41.5%	22.9%
Percent of Building Occupied	145%	145%	147%	149%							
Available Seats	-208	-206	-217	-223							
<b><u>With Change:</u></b>											
Number of Students	573	554	565	571	21.1%	8.7%	51.9%	12.4%	5.9%	44.3%	24.7%
Percent of Building Occupied	125%	121%	123%	124%							
Available Seats	-114	-95	-106	-112							
<b>Summit Hall Elementary School</b>											
Maximum Number of Seats=	457										
<b><u>No Change:</u></b>											
Number of Students	732	721	723	704	17.9%	3.0%	74.5%	2.6%	1.9%	79.8%	61.3%
Percent of Building Occupied	160%	158%	158%	154%							
Available Seats	-275	-264	-266	-247							
<b><u>With Change:</u></b>											
Number of Students	525	487	491	482	19.0%	3.4%	72.0%	3.2%	2.4%	79.3%	61.3%
Percent of Building Occupied	115%	107%	107%	105%							
Available Seats	-68	-30	-34	-25							

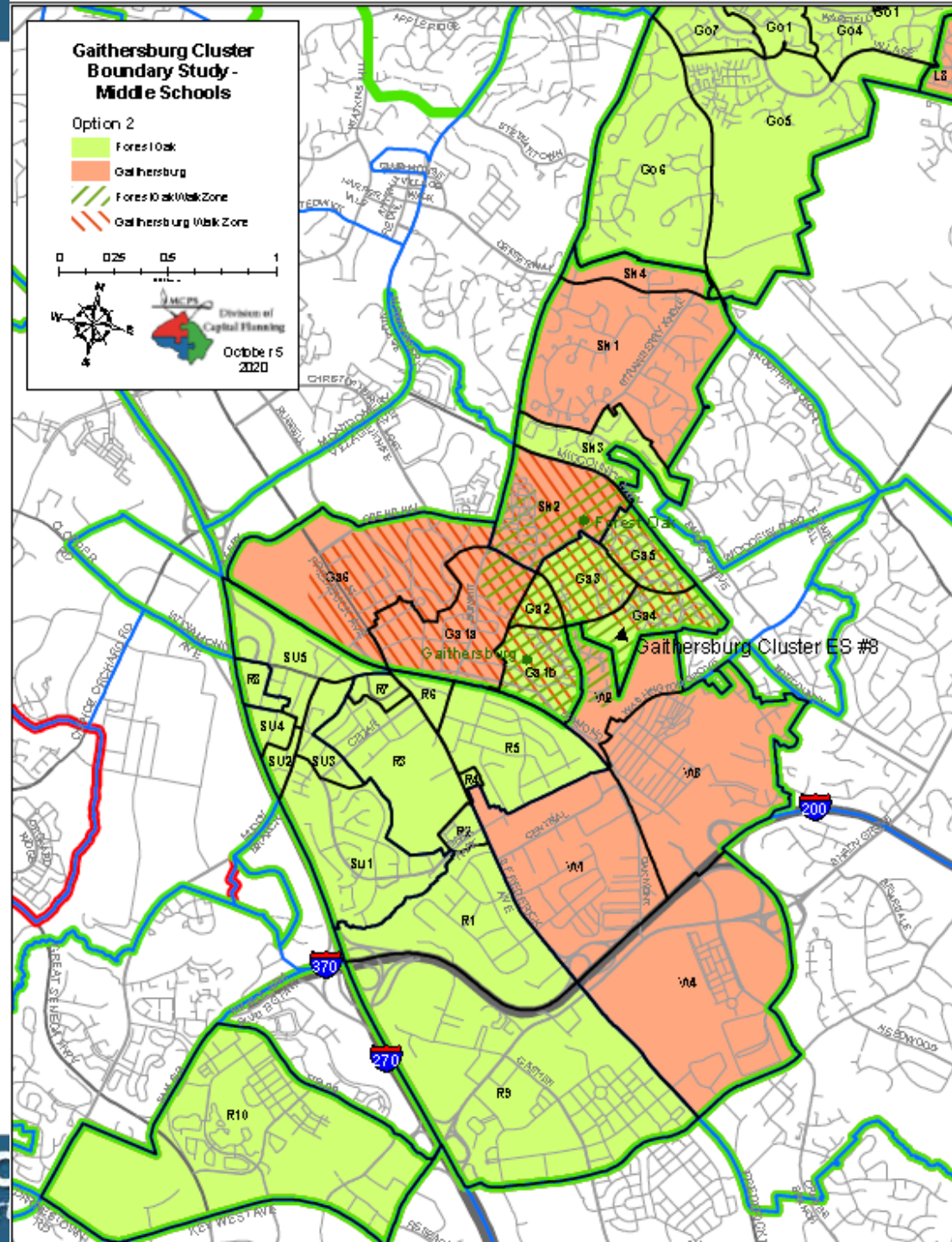
# Option 2 / Opción 2

## Proposed Middle School Reassignments

- Assign Gaithersburg ES #8 to Forest Oak Middle School
- Reassign Washington Grove ES From Forest Oak MS to Gaithersburg MS

## Reasignaciones Propuestas Para Escuelas Intermedias

- Asignar Gaithersburg ES # 8 a Forest Oak MS
- Reasignar Washington Grove ES de Forest Oak MS a Gaithersburg MS





# Option 2 Middle Schools

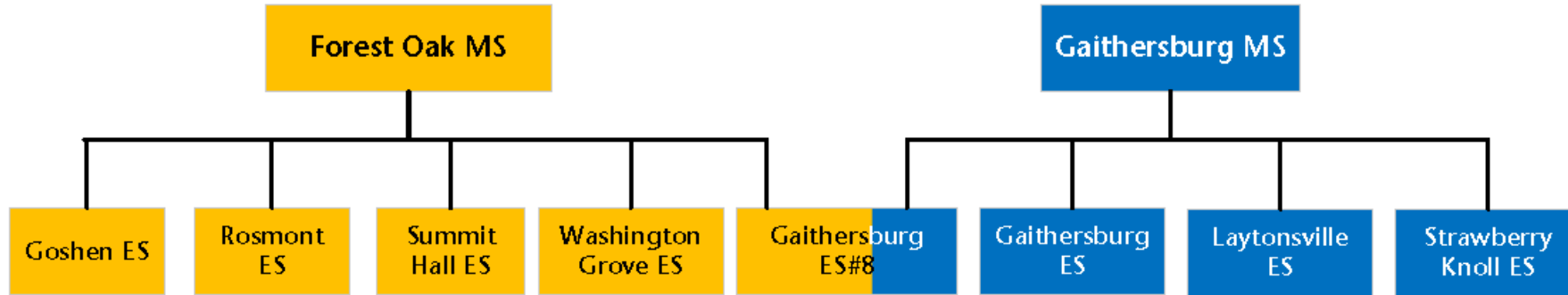
## Opción 2 Escuelas Intermediarias

School					2019–2020						
					Race/Ethnic Composition					% FARMS	% ESOL
	2022–23	2023–24	2024–25	2025–26	% Afr. Amer.	% Asian	% Hispanic	% White	% 2 or More		
<b>Forest Oak Middle School</b>											
Maximum Number of Seats= 955											
<b><u>No Change:</u></b>											
Number of Students	975	989	971	976	24.0%	5.5%	57.6%	10.0%	2.7%	57.1%	20.9%
Percent of Building Occupied	102%	104%	102%	102%							
Available Seats	-20	-34	-16	-21							
<b><u>With Change:</u></b>											
Number of Students	943	940	955	943	23.5%	6.3%	57.2%	9.5%	3.6%	54.9%	20.9%
Percent of Building Occupied	99%	98%	100%	99%							
Available Seats	12	15	0	12							
<b>Gaithersburg Middle School</b>											
Maximum Number of Seats= 1,009											
<b><u>No Change:</u></b>											
Number of Students	975	989	971	976	20.5%	7.1%	51.7%	14.9%	5.7%	44.7%	21.3%
Percent of Building Occupied	97%	98%	96%	97%							
Available Seats	34	20	38	33							
<b><u>With Change:</u></b>											
Number of Students	959	980	950	992	21.1%	6.2%	52.2%	15.6%	4.8%	47.2%	21.5%
Percent of Building Occupied	95%	97%	94%	98%							
Available Seats	50	29	59	17							

# Option 2

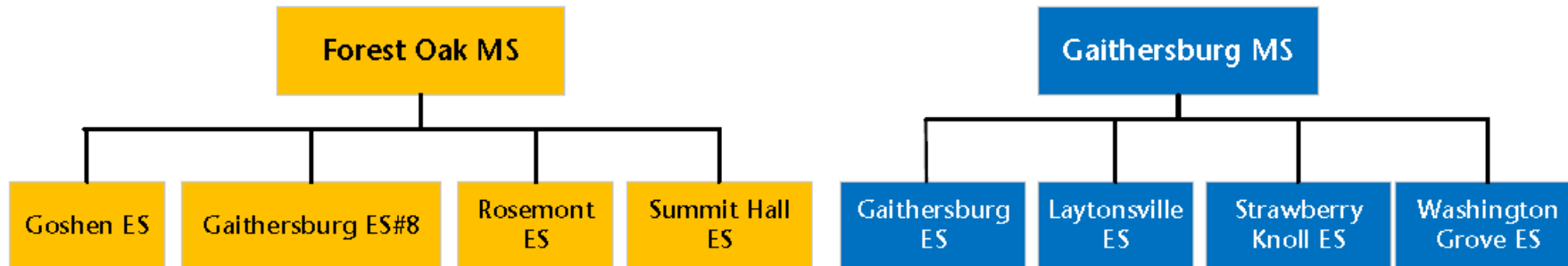
## No Middle School Boundary Change Assignments

(Gaithersburg ES #8 would split articulate to both middle schools)



## With Middle School Change Assignments

(Straight articulation to Forest Oak MS for Gaithersburg ES #8)



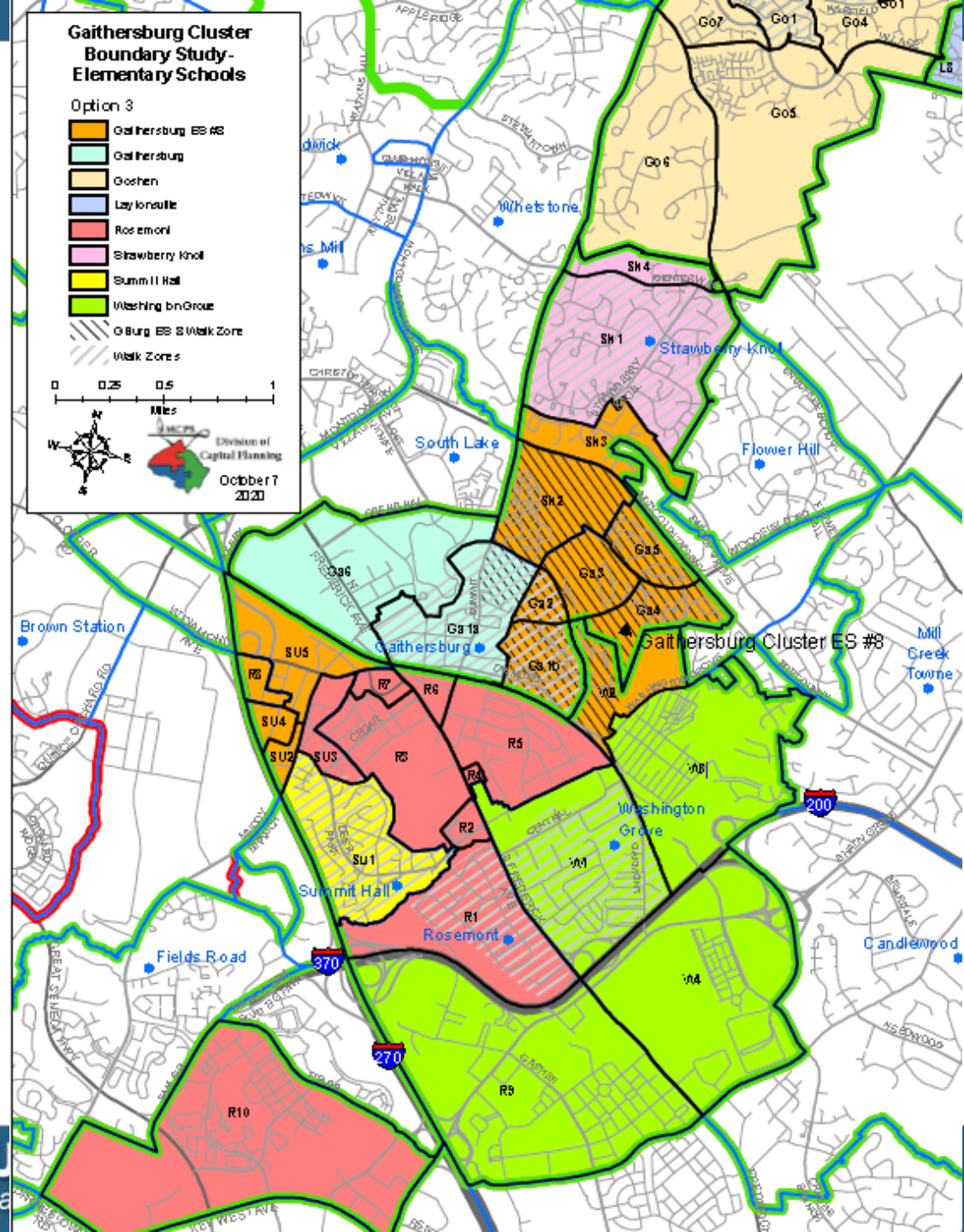
# Option 3 / Opción 3

## Proposed ES Reassignments

- Reassign Zones GA1b, GA2, GA3, GA4, and GA5 from Gaithersburg ES to Gaithersburg ES #8
- Reassign W2 from Washington Grove ES to Gaithersburg ES #8
- Reassign Zones SK2 and SK3 from Strawberry Knoll ES to Gaithersburg ES #8

## Reasignaciones Propuestas Para Escuelas Primarias

- Reasignar las zonas GA1b, GA2, GA3, GA4 y GA5 de Gaithersburg ES a Gaithersburg ES # 8
- Reasignar W2 de Washington Grove ES a Gaithersburg ES # 8
- Reasignar las Zonas SK2 y SK3 de Strawberry Knoll ES a Gaithersburg ES # 8



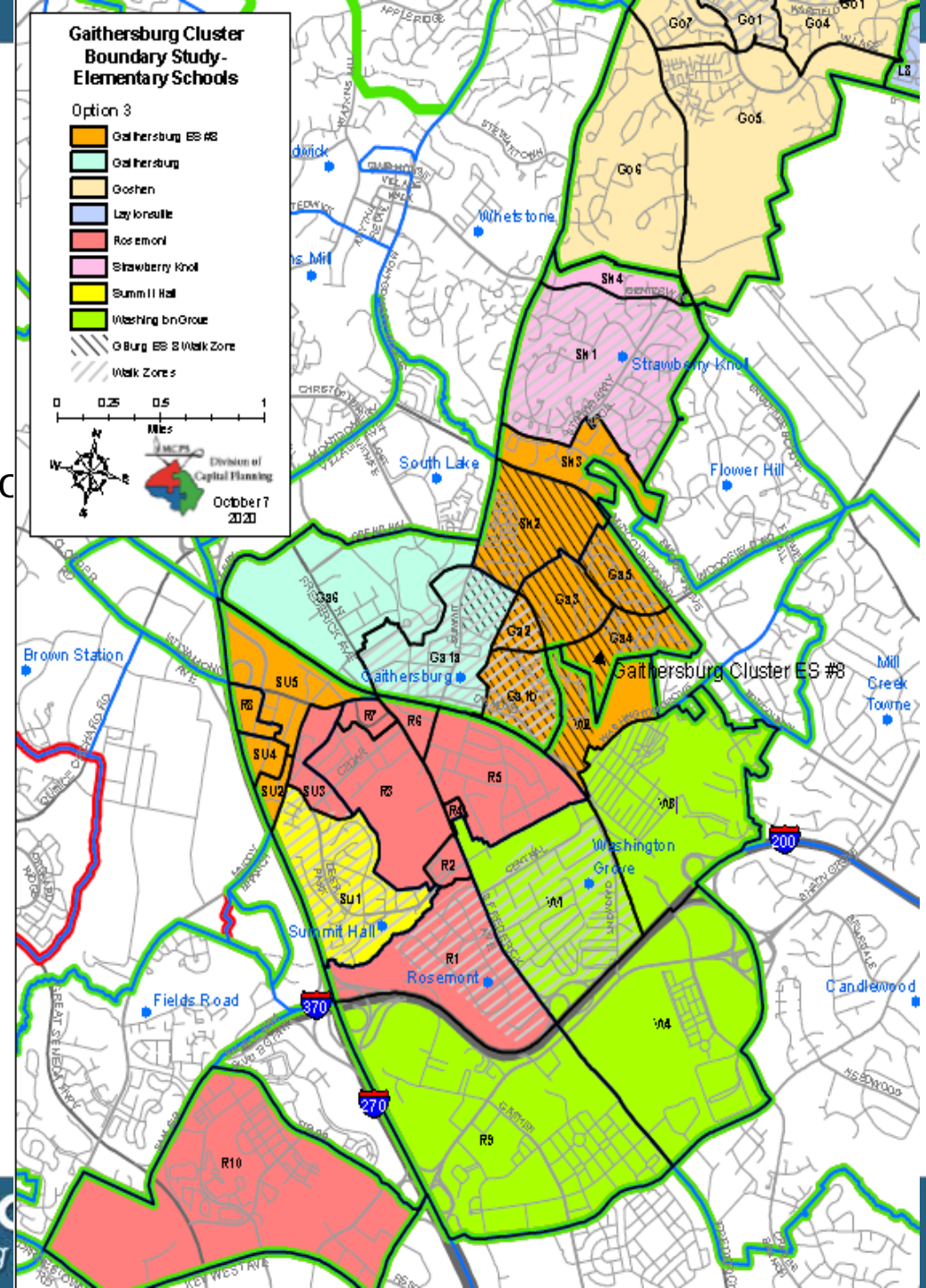
# Option 3 / Opción 3

## Proposed ES Reassignments

- Reassign Zone R8 from Rosemont ES to Gaithersburg ES #8
- Reassign Zone R9 from Rosemont ES to Washington Grove ES
- Reassign Zones SU2, SU4, and SU5 from Summit Hall ES to Gaithersburg ES #8
- Reassign Zone SU3 from Summit Hall ES to Rosemont ES

## Reasignaciones Propuestas Para Escuelas Primarias

- Reasigne la Zona R8 de Rosemont ES a Gaithersburg ES # 8
- Reasignar la Zona R9 de Rosemont ES a Washington Grove ES
- Reasignar las zonas SU2, SU4 y SU5 de Summit Hall ES a Gaithersburg ES # 8
- Reasignar la zona SU3 de Summit Hall ES a Rosemont ES



# Option 3 Elementary Schools

# Opción 3 Escuelas Primarias

School					2019–2020						
	2022–23	2023–24	2024–25	2025–26	Race/Ethnic Composition					% FARMs	% ESOL
					% Afr. Amer.	% Asian	% Hispanic	% White	% 2 or More		
<b>Gaithersburg Elementary School</b>											
<b>Maximum Number of Seats= 737</b>											
<b><u>No Change:</u></b>											
<b>Number of Students</b>	890	887	884	883	14.7%	1.8%	79.1%	2.9%	1.4%	85.0%	49.9%
<i>Percent of Building Occupied</i>	121%	120%	120%	120%							
<i>Available Seats</i>	-153	-150	-147	-146							
<b><u>With Change:</u></b>											
<b>Number of Students</b>	721	688	693	692	15.6%	1.1%	81.2%	1.2%	0.9%	87.7%	52.7%
<i>Percent of Building Occupied</i>	98%	93%	94%	94%							
<i>Available Seats</i>	16	49	44	45							
<b>Gaithersburg Elementary School #8</b>											
<b>Maximum Number of Seats= 740</b>											
<b><u>With Change:</u></b>											
<b>Number of Students</b>	653	745	723	702	22.0%	5.8%	64.2%	5.5%	2.5%	72.2%	48.6%
<i>Percent of Building Occupied</i>	88%	101%	98%	95%							
<i>Available Seats</i>	87	-5	17	38							
<b>Rosemont Elementary School</b>											
<b>Maximum Number of Seats= 568</b>											
<b><u>No Change:</u></b>											
<b>Number of Students</b>	662	674	675	671	30.1%	9.1%	46.7%	8.2%	5.7%	58.8%	38.9%
<i>Percent of Building Occupied</i>	117%	119%	119%	118%							
<i>Available Seats</i>	-94	-106	-107	-103							
<b><u>With Change:</u></b>											
<b>Number of Students</b>	586	586	596	592	24.2%	9.6%	53.8%	6.8%	5.5%	63.8%	43.1%
<i>Percent of Building Occupied</i>	103%	103%	105%	104%							
<i>Available Seats</i>	-18	-18	-28	-24							

# Option 3 Elementary Schools

# Opción 3 Escuelas Primarias

School					2019-2020						
					Race/Ethnic Composition						
	2022-23	2023-24	2024-25	2025-26	% Afr. Amer.	% Asian	% Hispanic	% White	% 2 or More	% FARMS	% ESOL
<b>Strawberry Knoll Elementary School</b>											
<b>Maximum Number of Seats= 459</b>											
<b><u>No Change:</u></b>											
<b>Number of Students</b>	<b>667</b>	<b>665</b>	<b>676</b>	<b>682</b>	<b>25.8%</b>	<b>11.2%</b>	<b>43.6%</b>	<b>12.9%</b>	<b>6.1%</b>	<b>41.5%</b>	<b>22.9%</b>
<i>Percent of Building Occupied</i>	<i>145%</i>	<i>145%</i>	<i>147%</i>	<i>149%</i>							
<i>Available Seats</i>	<i>-208</i>	<i>-206</i>	<i>-217</i>	<i>-223</i>							
<b><u>With Change:</u></b>											
<b>Number of Students</b>	<b>573</b>	<b>554</b>	<b>565</b>	<b>571</b>	<b>21.1%</b>	<b>8.7%</b>	<b>51.9%</b>	<b>12.4%</b>	<b>5.9%</b>	<b>43.1%</b>	<b>24.0%</b>
<i>Percent of Building Occupied</i>	<i>125%</i>	<i>121%</i>	<i>123%</i>	<i>124%</i>							
<i>Available Seats</i>	<i>-114</i>	<i>-95</i>	<i>-106</i>	<i>-112</i>							
<b>Summit Hall Elementary School</b>											
<b>Maximum Number of Seats= 457</b>											
<b><u>No Change:</u></b>											
<b>Number of Students</b>	<b>732</b>	<b>721</b>	<b>723</b>	<b>704</b>	<b>17.9%</b>	<b>3.0%</b>	<b>74.5%</b>	<b>2.6%</b>	<b>1.9%</b>	<b>79.8%</b>	<b>61.3%</b>
<i>Percent of Building Occupied</i>	<i>160%</i>	<i>158%</i>	<i>158%</i>	<i>154%</i>							
<i>Available Seats</i>	<i>-275</i>	<i>-264</i>	<i>-266</i>	<i>-247</i>							
<b><u>With Change:</u></b>											
<b>Number of Students</b>	<b>458</b>	<b>420</b>	<b>426</b>	<b>428</b>	<b>19.0%</b>	<b>4.0%</b>	<b>71.8%</b>	<b>3.5%</b>	<b>1.8%</b>	<b>77.8%</b>	<b>60.8%</b>
<i>Percent of Building Occupied</i>	<i>100%</i>	<i>92%</i>	<i>93%</i>	<i>94%</i>							
<i>Available Seats</i>	<i>-1</i>	<i>37</i>	<i>31</i>	<i>29</i>							
<b>Washington Grove Elementary School</b>											
<b>Maximum Number of Seats= 613</b>											
<b><u>No Change:</u></b>											
<b>Number of Students</b>	<b>472</b>	<b>467</b>	<b>477</b>	<b>482</b>	<b>20.6%</b>	<b>5.2%</b>	<b>63.2%</b>	<b>8.0%</b>	<b>2.8%</b>	<b>68.8%</b>	<b>48.7%</b>
<i>Percent of Building Occupied</i>	<i>77%</i>	<i>76%</i>	<i>78%</i>	<i>79%</i>							
<i>Available Seats</i>	<i>141</i>	<i>146</i>	<i>136</i>	<i>131</i>							
<b><u>With Change:</u></b>											
<b>Number of Students</b>	<b>474</b>	<b>471</b>	<b>482</b>	<b>487</b>	<b>28.0%</b>	<b>6.4%</b>	<b>49.1%</b>	<b>11.6%</b>	<b>5.0%</b>	<b>57.5%</b>	<b>38.2%</b>
<i>Percent of Building Occupied</i>	<i>77%</i>	<i>77%</i>	<i>79%</i>	<i>79%</i>							
<i>Available Seats</i>	<i>139</i>	<i>142</i>	<i>131</i>	<i>126</i>							

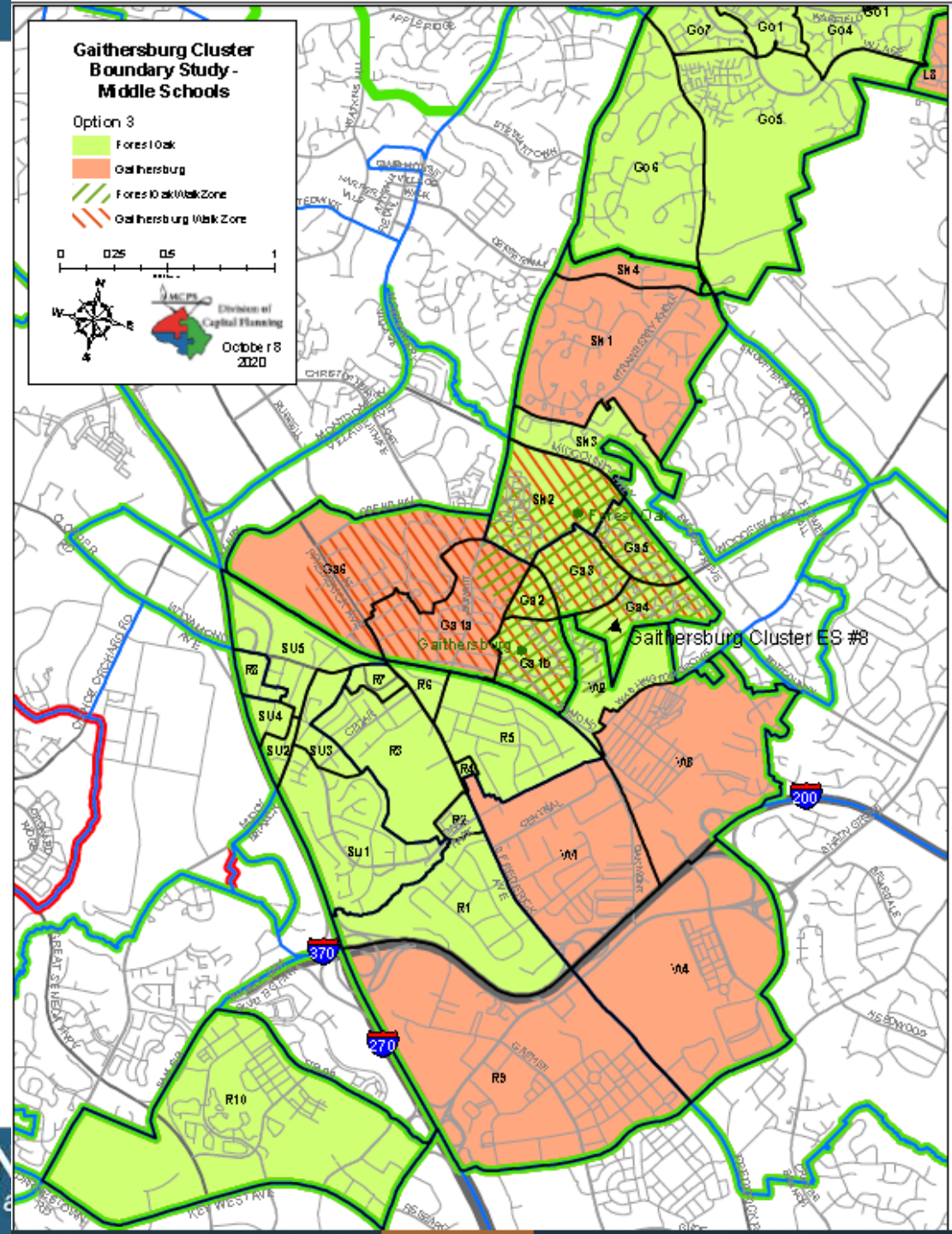
# Option 3 / Opción 3

## Proposed Middle School Reassignments

- Assign Gaithersburg ES #8 to Forest Oak MS
- Reassign Washington Grove ES from Forest Oak MS to Gaithersburg MS

## Reasignaciones Propuestas Para Escuelas Intermediarias

- Asignar Gaithersburg ES # 8 a Forest Oak MS
- Reasignar Washington Grove ES de Forest Oak MS a Gaithersburg MS



# Option 3 Middle Schools

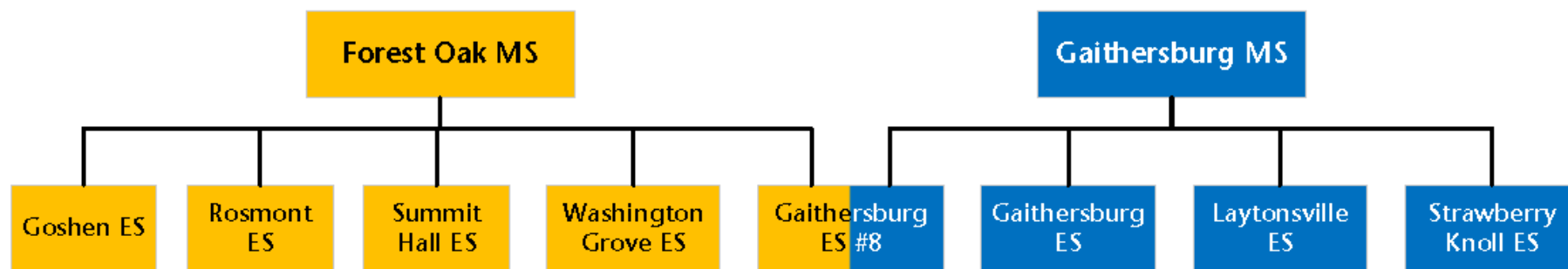
## Opción 3 Escuelas Intermediarias

School					2019–2020						
					Race/Ethnic Composition					% FARMs	% ESOL
	2022–23	2023–24	2024–25	2025–26	% Afr. Amer.	% Asian	% Hispanic	% White	% 2 or More		
<b>Forest Oak Middle School</b>											
Maximum Number of Seats= 955											
<u>No Change:</u>											
Number of Students	975	989	971	976	24.0%	5.5%	57.6%	10.0%	2.7%	57.1%	20.9%
Percent of Building Occupied	102%	104%	102%	102%							
Available Seats	-20	-34	-16	-21							
<u>With Change:</u>											
Number of Students	962	973	984	973	24.4%	6.4%	56.0%	9.4%	3.8%	54.4%	20.6%
Percent of Building Occupied	101%	102%	103%	102%							
Available Seats	-7	-18	-29	-18							
<b>Gaithersburg Middle School</b>											
Maximum Number of Seats= 1,009											
<u>No Change:</u>											
Number of Students	975	989	971	976	20.5%	7.1%	51.7%	14.9%	5.7%	44.7%	21.3%
Percent of Building Occupied	97%	98%	96%	97%							
Available Seats	34	20	38	33							
<u>With Change:</u>											
Number of Students	940	947	921	962	20.1%	6.0%	53.5%	15.8%	4.6%	47.6%	21.8%
Percent of Building Occupied	93%	94%	91%	95%							
Available Seats	69	62	88	47							

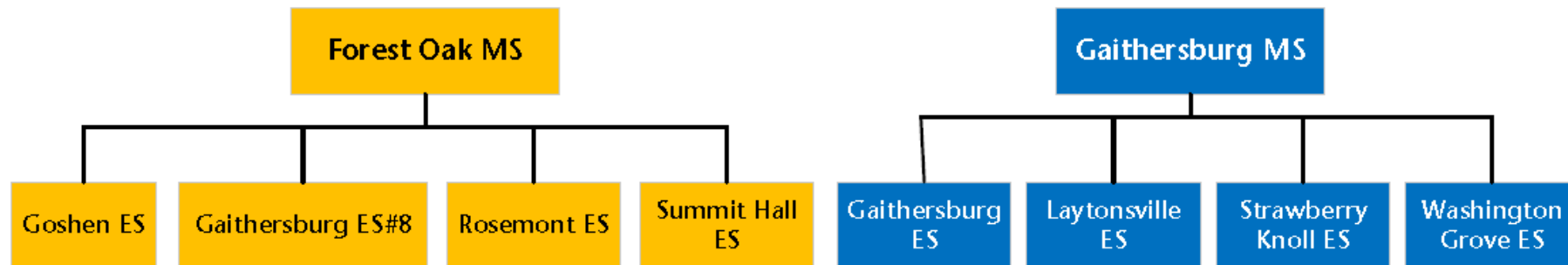


# Option 3

**No Middle School Boundary Change Assignments**  
(Gaithersburg ES #8 would split articulate to both middle schools)



**With Middle School Change Assignments**  
(Straight articulation to Forest Oak MS for Gaithersburg ES #8)



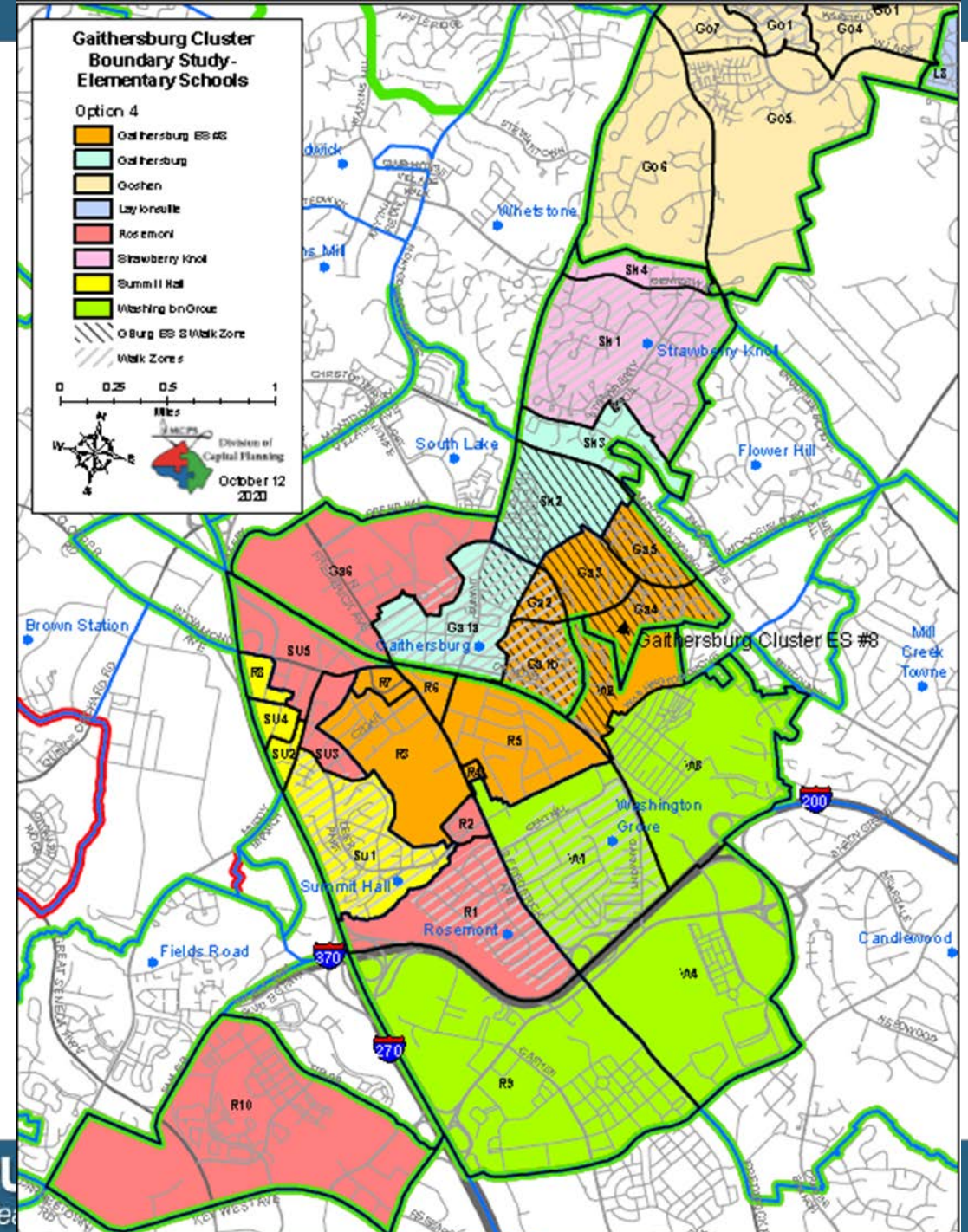
# Option 4 / Opción 4

## Proposed ES Reassignments

- Reassign Zones GA1b, GA2, GA3, GA4, and GA5 from Gaithersburg ES to Gaithersburg ES #8
- Reassign Zones R3, R4, R5, R6, and R7 from Rosemont ES to Gaithersburg ES #8
- Reassign Zone W2 from Washington Grove ES to Gaithersburg ES #8

## Reasignaciones Propuestas Para Escuelas Primarias

- Reasignar las zonas GA1b, GA2, GA3, GA4 y GA5 de Gaithersburg ES a Gaithersburg ES # 8
- Reasignar las zonas R3, R4, R5, R6 y R7 de Rosemont ES a Gaithersburg ES # 8
- Reasignar la Zona W2 de Washington Grove ES a Gaithersburg ES # 8



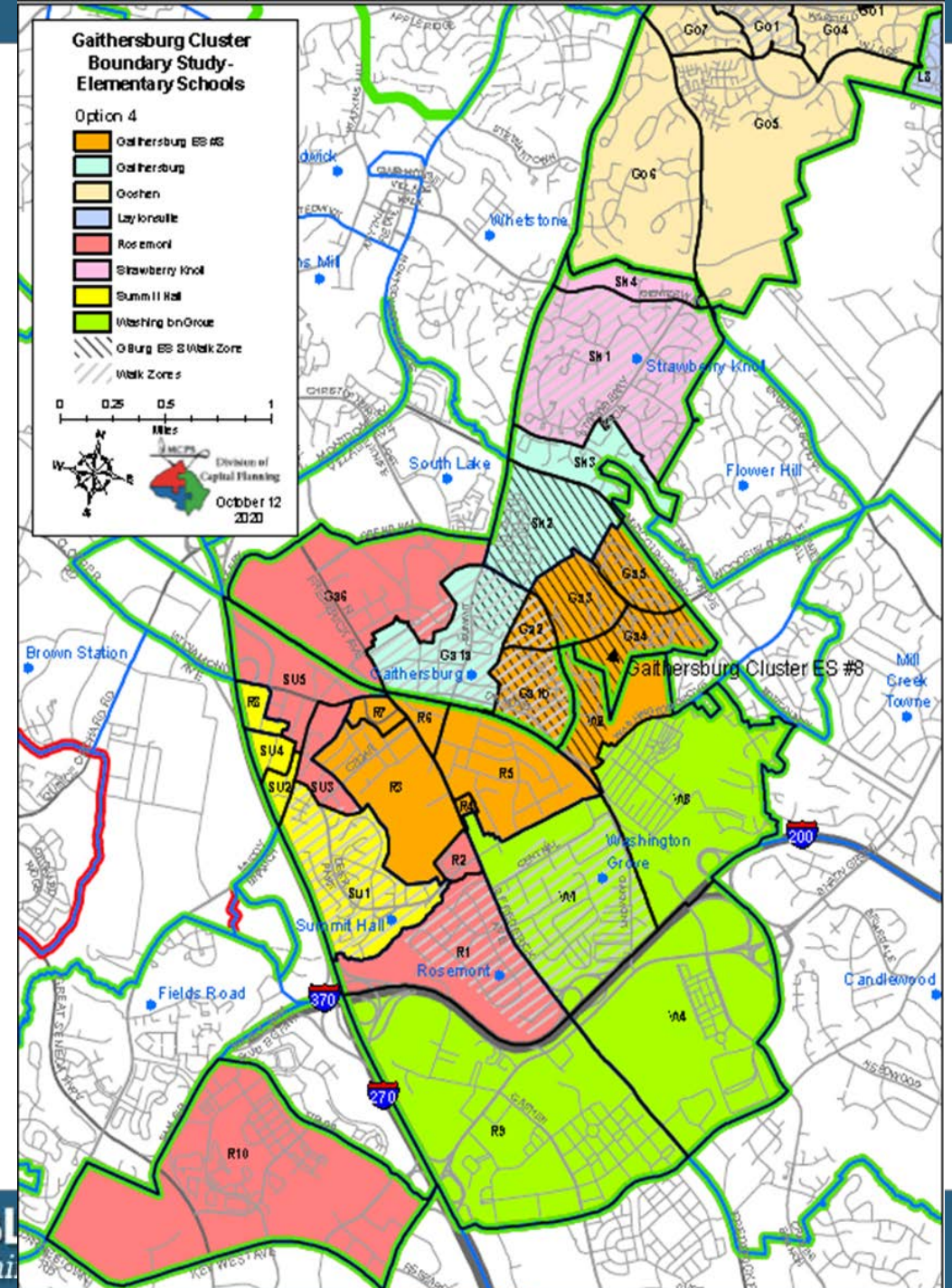
# Option 4 / Opción 4

## Proposed ES Reassignments

- Reassign Zones SK2 and SK3 from Strawberry Knoll ES to Gaithersburg ES
- Reassign Zone GA6 from Gaithersburg ES to Rosemont ES
- Reassign Zones SU3 and SU5 from Summit Hall ES to Rosemont ES
- Reassign Zone R9 from Rosemont ES to Washington Grove ES

## Reasignaciones Propuestas Para Escuelas Primarias

- Reasignar las zonas SK2 y SK3 de Strawberry Knoll ES a Gaithersburg ES
- Reasignar la zona GA6 de Gaithersburg ES a Rosemont ES
- Reasignar las zonas SU3 y SU5 de Summit Hall ES a Rosemont ES
- Reasignar la Zona R9 de Rosemont ES a Washington Grove ES



# Option 4 Elementar y Schools

# Opción 4 Escuelas Primarias

School					2019-2020						
					Race/Ethnic Composition					%	%
	2022-23	2023-24	2024-25	2025-26	% Afr. Amer.	% Asian	% Hispanic	% White	% 2 or More	% FARMS	% ESOL
<b>Gaithersburg Elementary School</b>											
Maximum Number of Seats= 737											
<u>No Change:</u>											
Number of Students	890	887	884	883	14.7%	1.8%	79.1%	2.9%	1.4%	85.0%	49.9%
Percent of Building Occupied	121%	120%	120%	120%							
Available Seats	-153	-150	-147	-146							
<u>With Change:</u>											
Number of Students	747	717	724	723	21.4%	4.8%	68.7%	3.5%	1.6%	78.2%	46.6%
Percent of Building Occupied	101%	97%	98%	98%							
Available Seats	-10	20	13	14							
<b>Gaithersburg Elementary School #8</b>											
Maximum Number of Seats= 740											
<u>With Change:</u>											
Number of Students	529	628	629	629	15.6%	4.7%	71.7%	6.0%	2.0%	75.9%	52.2%
Percent of Building Occupied	71%	85%	85%	85%							
Available Seats	211	112	111	111							
<b>Rosemont Elementary School</b>											
Maximum Number of Seats= 568											
<u>No Change:</u>											
Number of Students	662	674	675	671	30.1%	9.1%	46.7%	8.2%	5.7%	58.8%	38.9%
Percent of Building Occupied	117%	119%	119%	118%							
Available Seats	-94	-106	-107	-103							
<u>With Change:</u>											
Number of Students	531	503	485	471	26.3%	8.3%	54.8%	5.1%	5.5%	66.4%	40.9%
Percent of Building Occupied	93%	89%	85%	83%							
Available Seats	37	65	83	97							

# Option 4 Elementary Schools

# Opción 4 Escuelas Primarias

School					2019-2020						
					Race/Ethnic Composition						
	2022-23	2023-24	2024-25	2025-26	% Afr. Amer.	% Asian	% Hispanic	% White	% 2 or More	% FARMS	% ESOL
<b>Strawberry Knoll Elementary School</b>											
<b>Maximum Number of Seats= 459</b>											
<b><u>No Change:</u></b>											
<b>Number of Students</b>	667	665	676	682	25.8%	11.2%	43.6%	12.9%	6.1%	41.5%	22.9%
<i>Percent of Building Occupied</i>	145%	145%	147%	149%							
<i>Available Seats</i>	-208	-206	-217	-223							
<b><u>With Change:</u></b>											
<b>Number of Students</b>	573	554	565	571	21.1%	8.7%	51.9%	12.4%	5.9%	44.3%	24.7%
<i>Percent of Building Occupied</i>	125%	121%	123%	124%							
<i>Available Seats</i>	-114	-95	-106	-112							
<b>Summit Hall Elementary School</b>											
<b>Maximum Number of Seats= 457</b>											
<b><u>No Change:</u></b>											
<b>Number of Students</b>	732	721	723	704	17.9%	3.0%	74.5%	2.6%	1.9%	79.8%	61.3%
<i>Percent of Building Occupied</i>	160%	158%	158%	154%							
<i>Available Seats</i>	-275	-264	-266	-247							
<b><u>With Change:</u></b>											
<b>Number of Students</b>	611	591	600	591	18.2%	2.9%	74.2%	2.7%	2.0%	80.0%	62.4%
<i>Percent of Building Occupied</i>	134%	129%	131%	129%							
<i>Available Seats</i>	-154	-134	-143	-134							
<b>Washington Grove Elementary School</b>											
<b>Maximum Number of Seats= 613</b>											
<b><u>No Change:</u></b>											
<b>Number of Students</b>	472	467	477	482	20.6%	5.2%	63.2%	8.0%	2.8%	68.8%	48.7%
<i>Percent of Building Occupied</i>	77%	76%	78%	79%							
<i>Available Seats</i>	141	146	136	131							
<b><u>With Change:</u></b>											
<b>Number of Students</b>	474	471	482	487	28.0%	6.4%	49.1%	11.6%	5.0%	57.5%	38.2%
<i>Percent of Building Occupied</i>	77%	77%	79%	79%							
<i>Available Seats</i>	139	142	131	126							

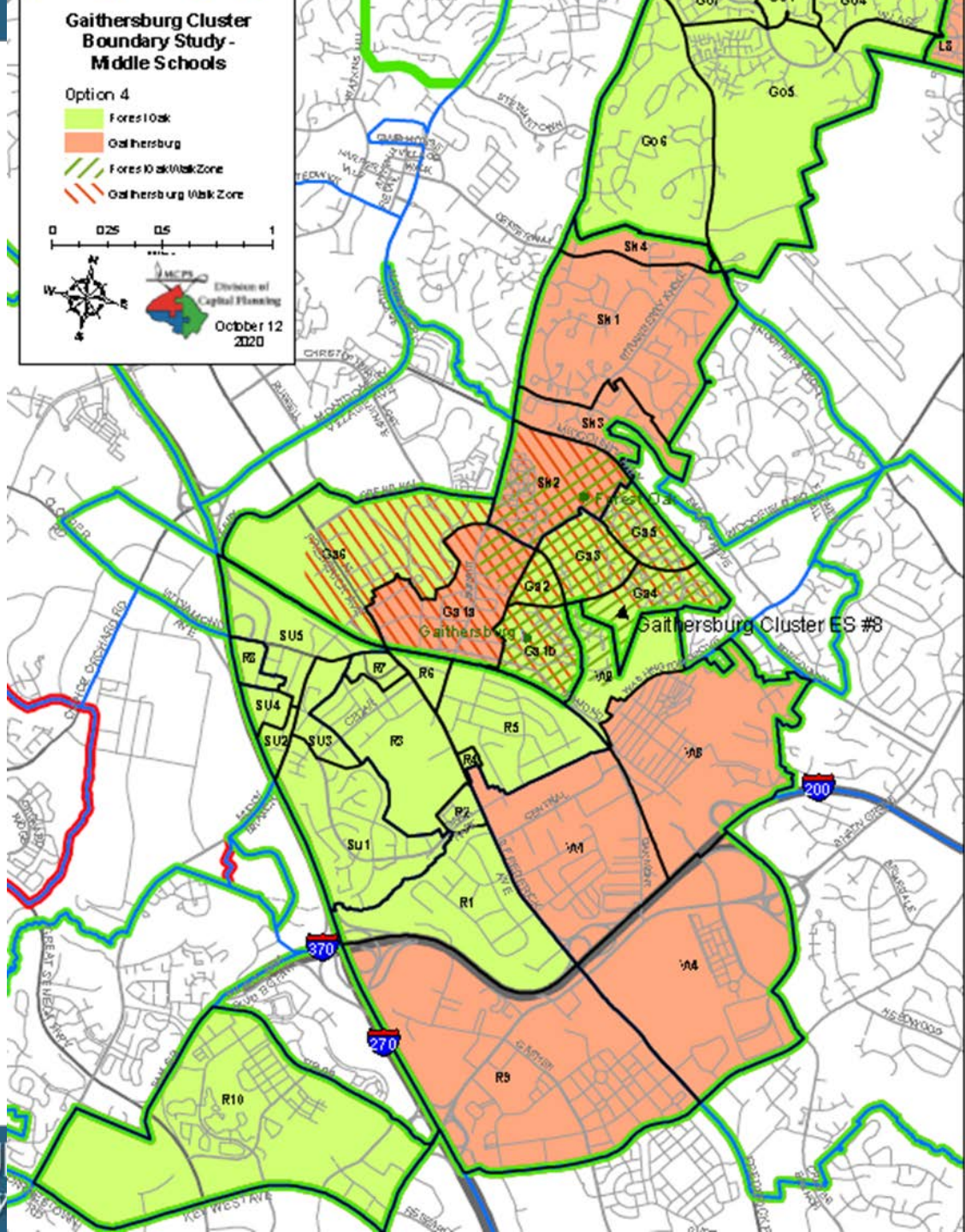
# Option 4 / Opción 4

## Proposed Middle School Reassignments

- Assign Gaithersburg ES #8 to Forest Oak MS
- Reassign Washington Grove ES from Forest Oak MS to Gaithersburg MS

## Reasignaciones Propuestas Para Escuelas Intermediarias

- Asignar Gaithersburg ES # 8 a Forest Oak MS
- Reasignar Washington Grove ES de Forest Oak MS a Gaithersburg MS



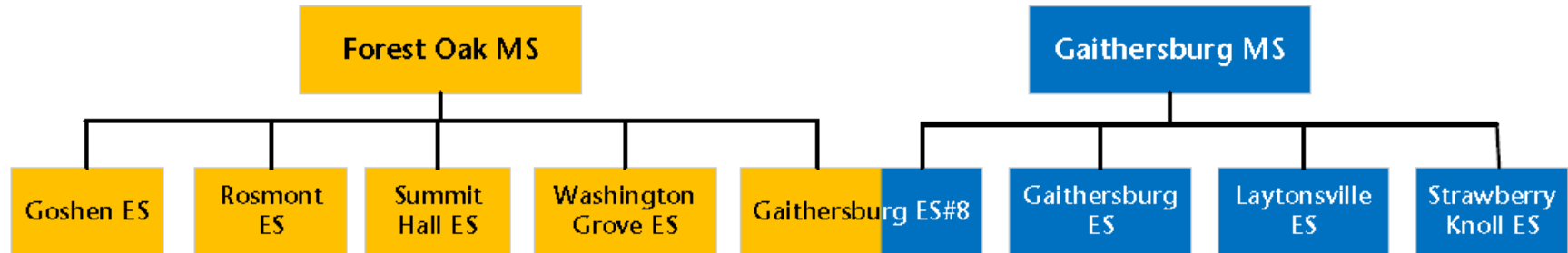
# Option 4 Middle Schools

## Opción 4 Escuelas Intermediarias

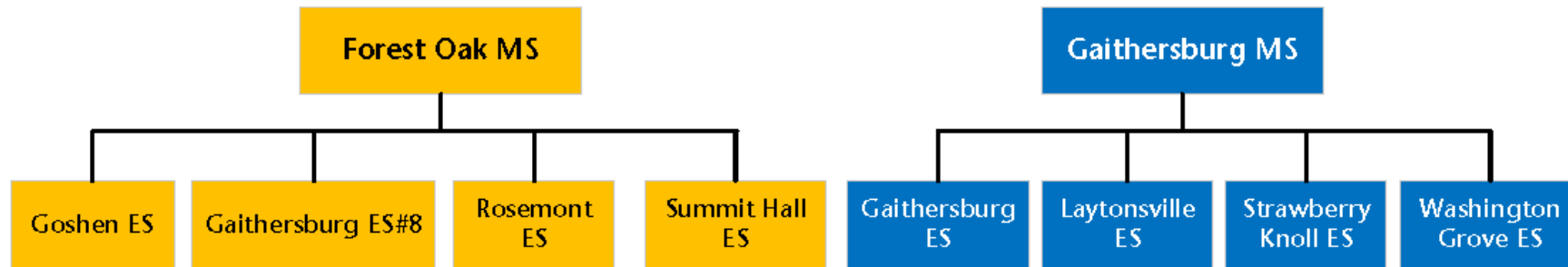
School					2019-2020							
					Race/Ethnic Composition							
	2022-23	2023-24	2024-25	2025-26	% Afr. Amer.	% Asian	% Hispanic	% White	% 2 or More	% FARMS	% ESOL	
<b>Forest Oak Middle School</b>												
Maximum Number of Seats= 955												
<u>No Change:</u>												
Number of Students	975	989	971	976	24.0%	5.5%	57.6%	10.0%	2.7%	57.1%	20.9%	
Percent of Building Occupied	102%	104%	102%	102%								
Available Seats	-20	-34	-16	-21								
<u>With Change:</u>												
Number of Students	931	916	926	914	22.8%	6.2%	58.2%	9.4%	3.4%	56.0%	21.3%	
Percent of Building Occupied	97%	96%	97%	96%								
Available Seats	24	39	29	41								
<b>Gaithersburg Middle School</b>												
Maximum Number of Seats= 1,009												
<u>No Change:</u>												
Number of Students	975	989	971	976	20.5%	7.1%	51.7%	14.9%	5.7%	44.7%	21.3%	
Percent of Building Occupied	97%	98%	96%	97%								
Available Seats	34	20	38	33								
<u>With Change:</u>												
Number of Students	971	1,004	979	1,021	21.9%	6.3%	51.2%	15.6%	5.0%	46.2%	21.0%	
Percent of Building Occupied	96%	100%	97%	101%								
Available Seats	38	5	30	-12								

# Option 4

**No Middle School Boundary Change Assignments**  
(Gaithersburg ES #8 would split articulate to both middle schools)



**With Middle School Change Assignments**  
(Straight articulation to Forest Oak MS for Gaithersburg ES #8)





# Schedule of Meetings-Revised (7:00-8:30 pm)

Date	Action	Location
March 2	Public Information Meeting #1	Gaithersburg MS
March 3	Public Information Meeting #1	Forest Oak MS
October 14	Presentation of 1 <sup>st</sup> Round of Options	Virtual Meeting
October 19	Question & Answers on 1 <sup>st</sup> Round of Options –English <b><i>(Please watch Presentation of 1<sup>st</sup> Round of Options Prior to the meeting</i></b> <a href="https://www.montgomeryschoolsmd.org/departments/planning/gaithersburgcluster8boundarystudy.aspx">https://www.montgomeryschoolsmd.org/departments/planning/gaithersburgcluster8boundarystudy.aspx</a> )	Virtual Meeting
October 20 (20 de octubre)	Release Survey on 1 <sup>st</sup> Round of Options/Publicar encuesta sobre la primera ronda de opciones	Online
	Questions & Answers on 1 <sup>st</sup> Round of Options—Español (Sesión de preguntas y respuestas sobre la primera ronda de opciones)	Virtual Meeting (reunión virtual)
November 11	Presentation of 2 <sup>nd</sup> Round of Options <i>(if needed)</i>	Virtual Meeting
November 16	Questions & Answers on 2nd Round of Options <i>(if needed)</i> <b><i>(Please watch Presentation of 2nd Round of Options Prior to the meeting</i></b> <a href="https://www.montgomeryschoolsmd.org/departments/planning/gaithersburgcluster8boundarystudy.aspx">https://www.montgomeryschoolsmd.org/departments/planning/gaithersburgcluster8boundarystudy.aspx</a> )	Virtual Meeting
November 17 (17 de noviembre)	Release of Survey on all Options <i>(if needed)</i> /Publicar encuesta sobre la primera ronda de opciones	Online
	Questions & Answers on 2 <sup>nd</sup> Round of Options—Español (Sesión de preguntas y respuestas sobre la segunda ronda de opciones)	Virtual Meeting (reunión virtual)
December 2	Public Information Meeting #2	Virtual Meeting

# Calendario de Reuniones - Rectificado (7:00-8:30 pm)

Date	Action	Location
2 de Marzo	Reunión de información pública #2	Gaithersburg MS
3 de Marzo	Reunión de información pública #2	Forest Oak MS
14 de Octubre	Presentación de la 1ra ronda de opciones	Reunión virtual
19 de Octubre	Preguntas y respuestas sobre la primera ronda de opciones en inglés <b>(Por favor vea la presentación de la primera ronda de opciones antes de la reunión <a href="https://www.montgomeryschoolsmd.org/departments/planning/gaithersburgcluster8/boundarystudy.aspx">https://www.montgomeryschoolsmd.org/departments/planning/gaithersburgcluster8/boundarystudy.aspx</a>)</b>	Reunión virtual
20 de Octubre	Publicar encuesta sobre la primera ronda de opciones	Online
	Sesión de preguntas y respuestas sobre la primera ronda de opciones en Español	Reunión virtual
11 de Noviembre	Presentación de la 2da ronda de opciones (si es necesario)	Reunión virtual
16 de Noviembre	Preguntas y respuestas sobre la segunda ronda de opciones (si es necesario) <b>(Por favor vea la presentación de la segunda ronda de opciones antes de la reunión <a href="https://www.montgomeryschoolsmd.org/departments/planning/gaithersburgcluster8/boundarystudy.aspx">https://www.montgomeryschoolsmd.org/departments/planning/gaithersburgcluster8/boundarystudy.aspx</a>)</b>	Reunión virtual
17 de Noviembre	Publicación de la encuesta sobre todas las opciones (si es necesario)	Online
	Sesión de preguntas y respuestas sobre la segunda ronda de opciones en Español	Reunión virtual
2 de Diciembre	Reunión de información pública #2	Reunión virtual

# Questions

# Preguntas



<https://www.montgomeryschoolsmd.org/departments/planning/gaithersburgcluster8boundarystudy.aspx>